

INSTALLATION STEPS

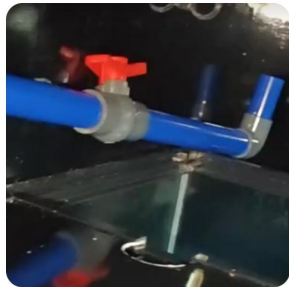


PRELIMINARY PREPARATION



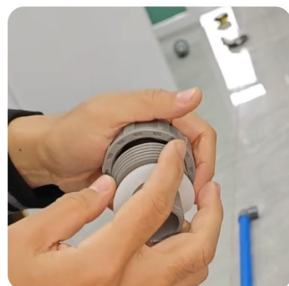
Remove all pre-installed accessories from the fish tank/cabinet, count them all to ensure completeness, and then start the installation.

INSTALLATION OF MAIN DISCHARGE PIPE FITTINGS



Step1

Place the largest pipe fitting into the tank, and insert it through the corresponding hole in the dry-wet separation box.



Step2

Remove the large drain fitting, unscrew the two rings inside the fitting, and place the rubber ring beneath the fitting.

INSTALLATION OF MAIN DISCHARGE PIPE FITTINGS



Step3

One person holds the large pipe fitting inside the tank and aligns the main drain connector with the threaded opening of the pipe. The other person tightens the threaded joint from above. No tools are required; hand-tightening is sufficient. Ensure the connector is closely fitted and firmly pressed against the pipe

INSTALLATION OF THE WATER SUPPLY PIPE



Step1

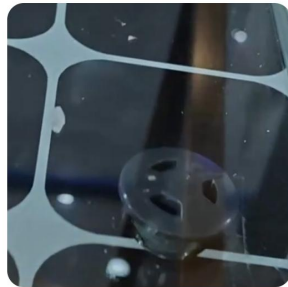
Place the upper water pipe into the cylinder body, remove the bottom cylinder connector, first unscrew the rubber sleeve above the connector (the rubber sleeve must be installed; otherwise, water leakage will occur)



Step2

One person held the upper water pipe inside the tank, while the other person aimed at the hole position from above and tightened the connector with their bare hands to ensure a secure and non-loose connection.

INSTALLATION OF SEWAGE PIPES



Step1

The operation is the same as that for the upper water pipe and the main lower water pipe. First, unscrew the pipe fitting lock head, then insert the pipe fitting into the cylinder.



Step2

The gasket must be placed below the joint, and then simply tighten the joint by hand.

INSTALLATION OF THE WATER PUMP



Step1

Install snap-in fasteners on the pipe fittings connected to the water pump, secure them firmly to prevent the pipe fittings from loosening.



Step2

Select the pump connector that matches the pipe fitting. Align the pipe fitting with the connector and press it in. Then lock the connector.

INSTALLATION OF THE WATER PUMP



Step3

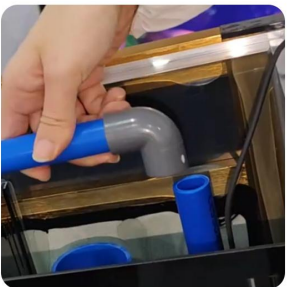
If the pipe fittings are too long, they can be shortened as needed. Place the water pump in the middle of the cylinder, avoiding touching the cylinder wall to prevent noise caused by vibration during operation.

INSTALLATION OF THE WATER PUMP



Step1

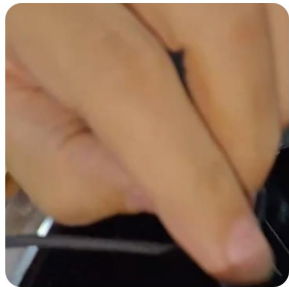
Insert the spiral noise-damping sheet into the main downwater pipe fitting, and complete the installation of the filter chamber.



Step2

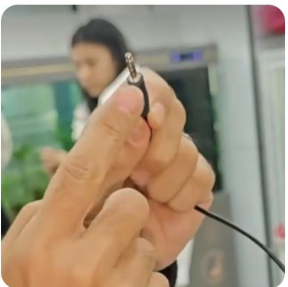
Select the longest water outlet pipe, pair it with the external duckbill fitting, install it at the corresponding interface and secure it tightly, then arrange it neatly.

LINE CONNECTION



Step1

The temperature sensor with a round rubber tip can be directly placed into the fish tank water area. It only needs to contact the water to detect the water temperature.



Step2

Disassemble the power strip included as a gift, then insert the data cable of the digital display board into the corresponding port of the power strip.

INSTALLATION OF AIR PUMP



Step1

Take out the air pump, air hose, bubble stone and blue stop valve from the accessory gift package.



Step2

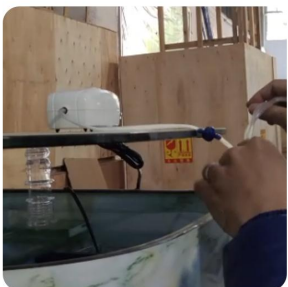
Insert one end of the trachea into the interface of the air pump, and cut it at the appropriate position on the trachea.

INSTALLATION OF AIR PUMP



Step3

Connect the end of the water stop valve without any English label to the air pipe, and then connect the rest of the air pipe.



Step4

Insert the other end of the air tube into the air stone to finish the air pump installation. The air pump can be placed outside the fish tank or inside the glass groove. Simply connect the power supply for immediate use.