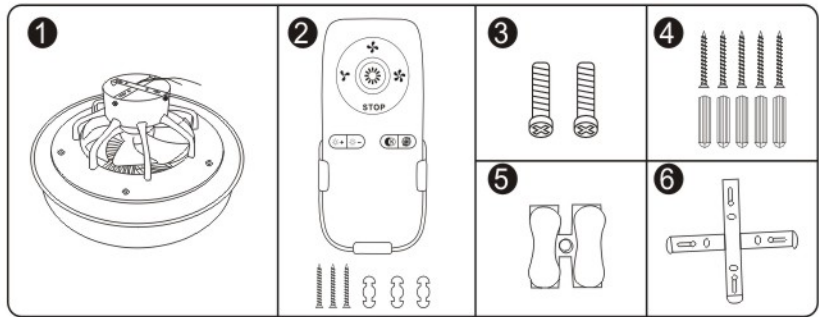


1. WARM TIPS

- ① Please install according to the instructions when installing.
- ② We suggest you ask a professional technician for help if you are not good at installation.
- ③ Do not touch when the lamp is lit. In the event of a malfunction, the power must be deactivated first! It should be specially maintained by an electrician or qualified personnel.
- ④ If you have any questions, please email us, we will reply in 24 hours.

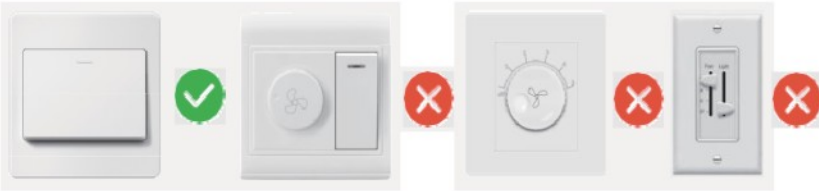
2. Package Include:

- ① Ceiling fan with light
- ② Remote control (without batteries) ,pointed screws and drop in anchors
- ③ 2 screws for junction box bracket
- ④ Pointed screws and drop in anchors
- ⑤ Push-in wiring nut
- ⑥ Hanging plate

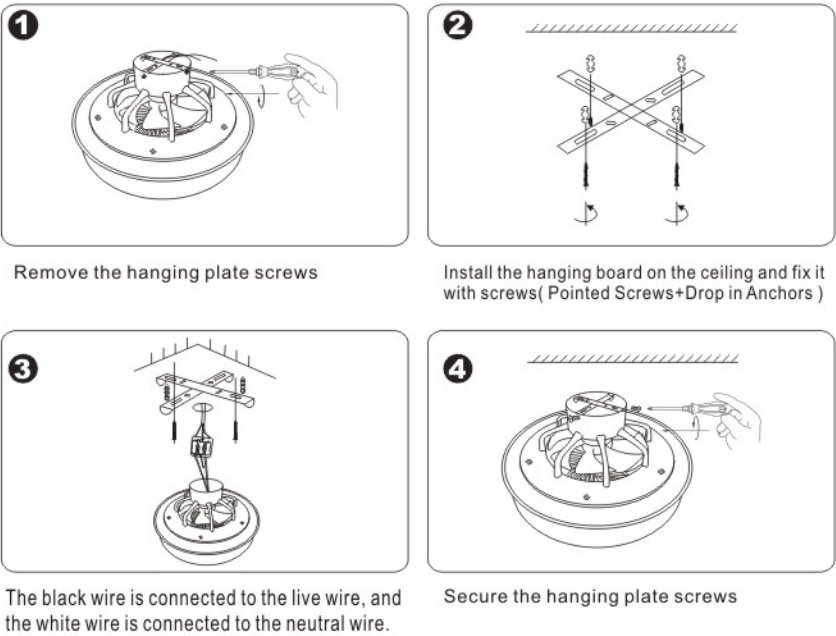


3. Wall Switch

In order to ensure the normal work of LED Light recommend to use ordinary wall switch.



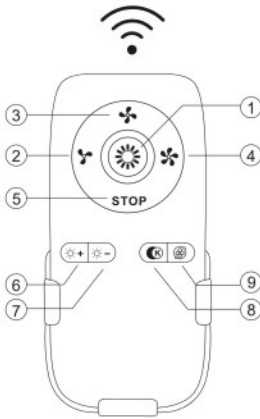
4.How to Install



5. 5 Meters Smart Remote Control

(1)Please use 1 Pcs 23A 12V battery (battery not included)

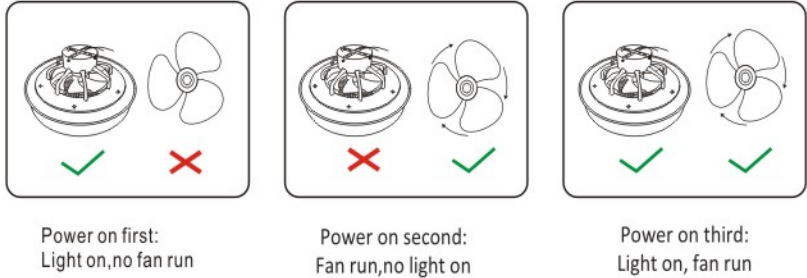
- ①. Light switch
- ②. Low speed
- ③. Medium speed
- ④. High speed
- ⑤. Fan off
- ⑥. Brightness +
- ⑦. Brightness -
- ⑧. Adjust color temperature
- ⑨. Cyclic air supply mode
- ⑩. Long-press ⑧ can get fast acting.



- (2) Normally, you can use the remote control directly. In case, there are code matching steps:
- 1.Put 1 piece battery (23A 12V) in remote.
  2. Power on.
  3. Press button ①(light switch) and button ④ (High speed) at the same time within 3-5 seconds after power on. The light flashes or a beep is heard, which proves that the pairing is successful.
  4. Please refer to the remote control manual for key functions details.

6. Function Test

1. When your remote control or APP is unavailable, follow these steps to test the wall switch before using it.
2. How to test:Power on - Power off - Power on - Power off - Power on



When using the wall switch, the light does not light up

- ①Check whether the line of the light board is loose.
- ②Check whether the drive line is loose.
- ③It is also possible that the wiring with the light source inside has fallen off.
- ④the light must be disassembled and check.
- ⑤If the light still does not work, it is usually necessary to replace it with a new light source.

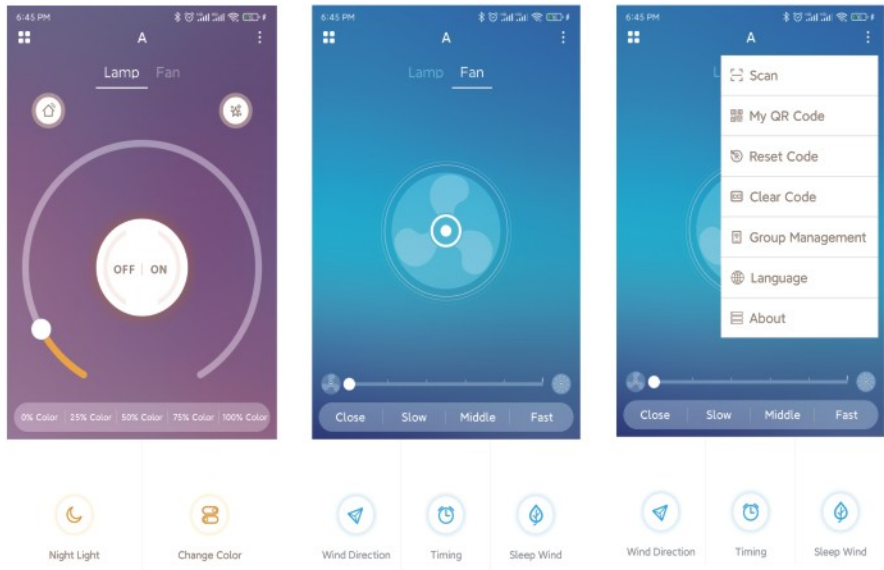
When using the wall switch, the fan is not running

- ①Check whether the motor wire is loose.
- ②Check whether the drive line is loose.

7.2.4G fan lamp mobile APP user manual

Preparing

1. Scan the QR code on the right to download app.
  2. Make sure the phone is connected to the net and bluetooth is on.
  3. Make sure the lamp is power connected.
  4. Press this small icon (top left in the app) within 10 seconds after power on to match code.
- The light flashes or a beep is heard, which proves that the pairing is successful.



	Group: One mobile APP can control 4 lamps (named A/B/C/D ) at most.
	L amp name: The lamp are controlling for this page.
	Menu.
Lamp	Lamp control page.
Fan	Fan control page.
	Match code.
	Auxiliary lamp switch.
OFF	Light OFF.
ON	Light On.
	light colo(u)r temperature control.
0% Color	The hot key for warm color mode.
25% Color	The hot key for Sunset color mode.
50% Color	The hot key for 4000K.
75% Color	The hot key for 50% 4000K.
100% Color	The hot key for 50% 3000K.
	The hot key for night light.
	The hot key for 3000K 1 4000K /6000K.
	5 fan speed adjust The hot key for fan stop.
Close	The hot key for fan stop.
Slow	The hot key for slow speed.
Middle	The hot key for middle speed.

Fast	The hot key for fast speed.
	Wind direction.(If not Inverter motor, no function).
	Timing key: Press once to run 1 hour, twice for 2 hours, third for 4 hours. In the process.press fan stop keys for cancel the timing function.
	The hot key for Normal wind 1 Sleep wind / Natural wind.
	If you want multiple apps to control a fan light at the same time , you only need to code mobile phone A with the fan light ,mobile phone B to scan mobile phone A - My QR Code ,then mobile B can also control the fan light after successful learning.
	Shaw your phone's matched fan light to others.
	Reset Code
	Clear Code
	Manage lamp grouping, change the fan light name.
	Follow system.
	About the app.

After Services

Any problems after receiving,please feel free to contact us with details via email, you will get customer support in 24 hours.

**Note:** Please install this product correctly according to our instructions, do not retrofit or remode privately. If the failure is caused by a third party or natural disaster, the warranty won't be covered.