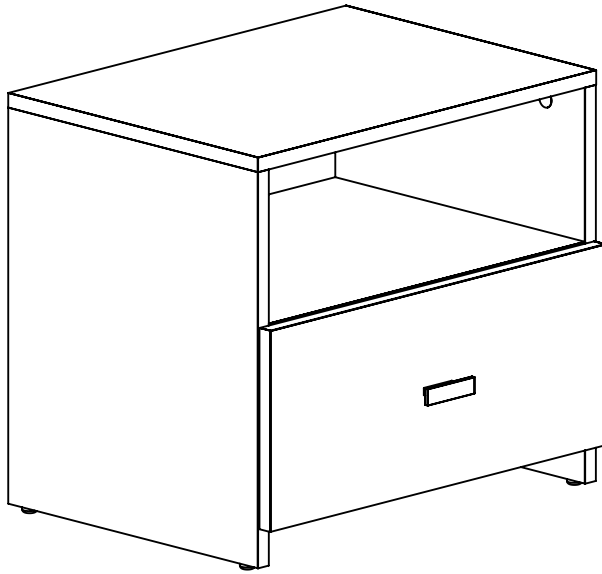
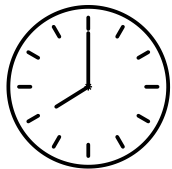
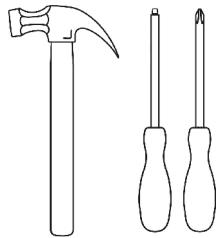


Installation & Assembly



Outils requis



Temps d'assemblage
30 min
Assembly time

IMPORTANT

- Lire les instructions avant de commencer l'assemblage
- Identifier les pièces (chaque pièce est numérotée)
- S'assurer que les trous sont libres de poussière
- Vérifier que toute la quincaillerie est présente
- Tenir les pièces loin de la portée des enfants (pièces pointues)

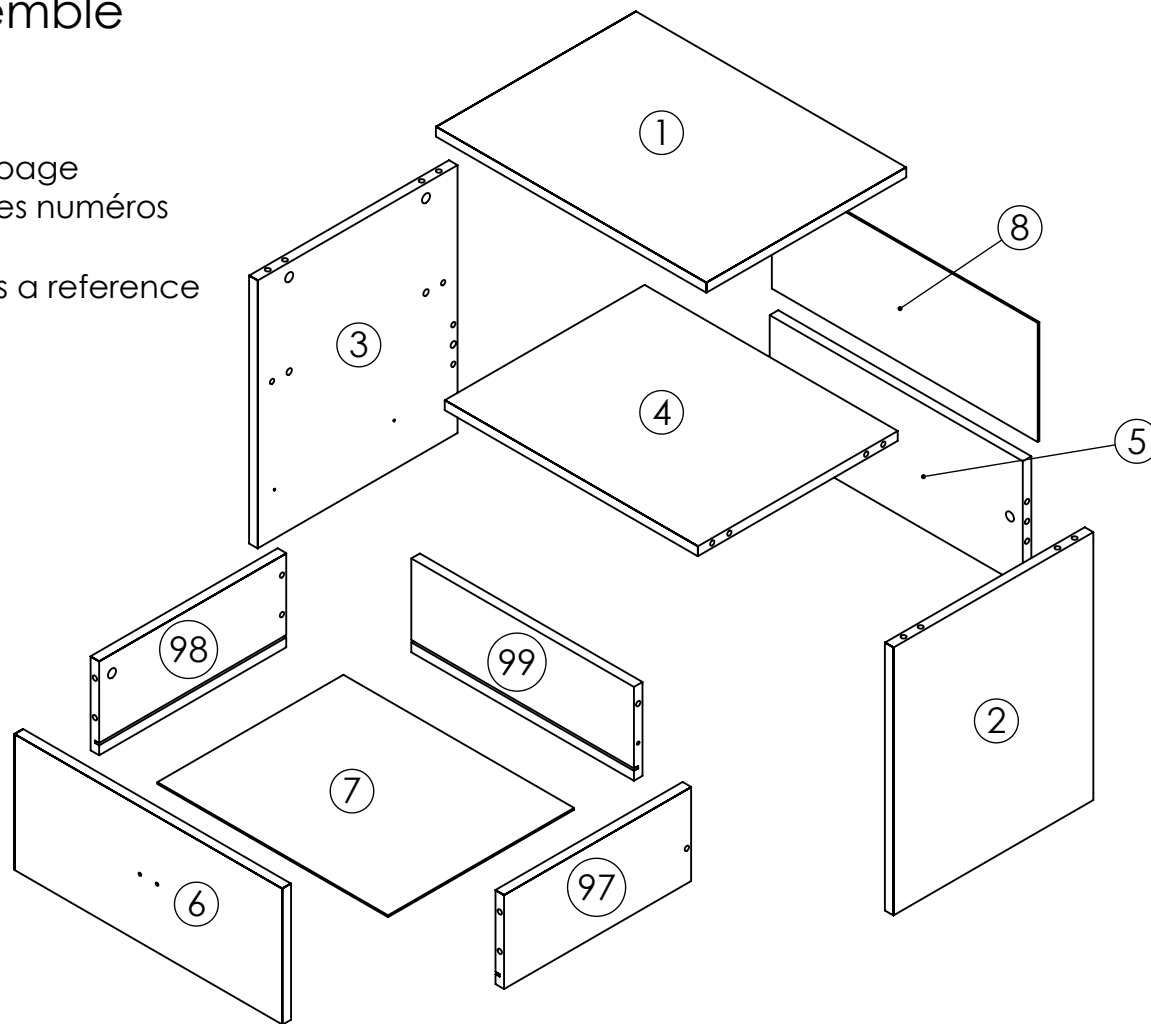
IMPORTANT

- Read the instructions before starting assembly
- Identify parts (each piece is numbered)
- Make sure holes are dust free
- Make sure that all the hardware is present
- Keep away from reach of children (sharp pieces)

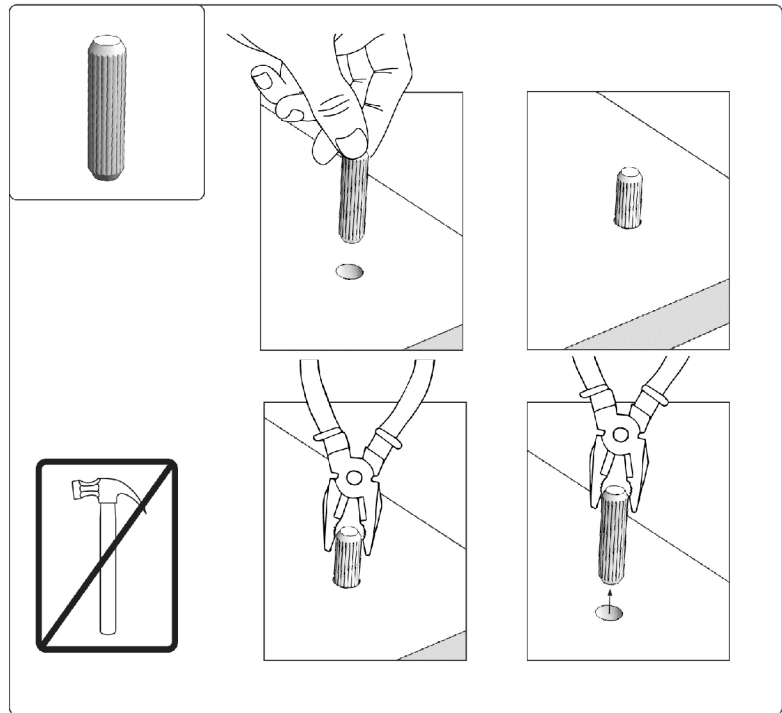
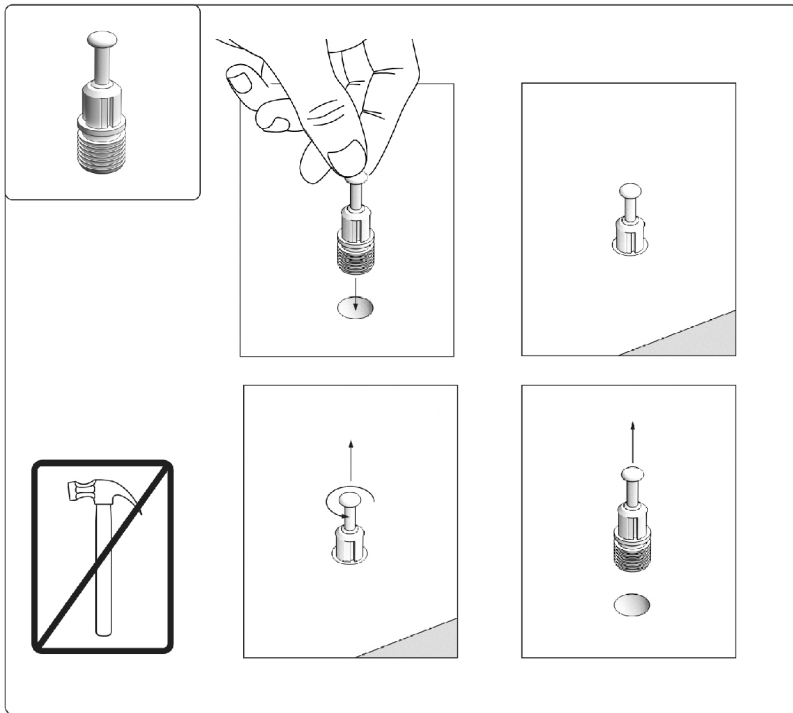
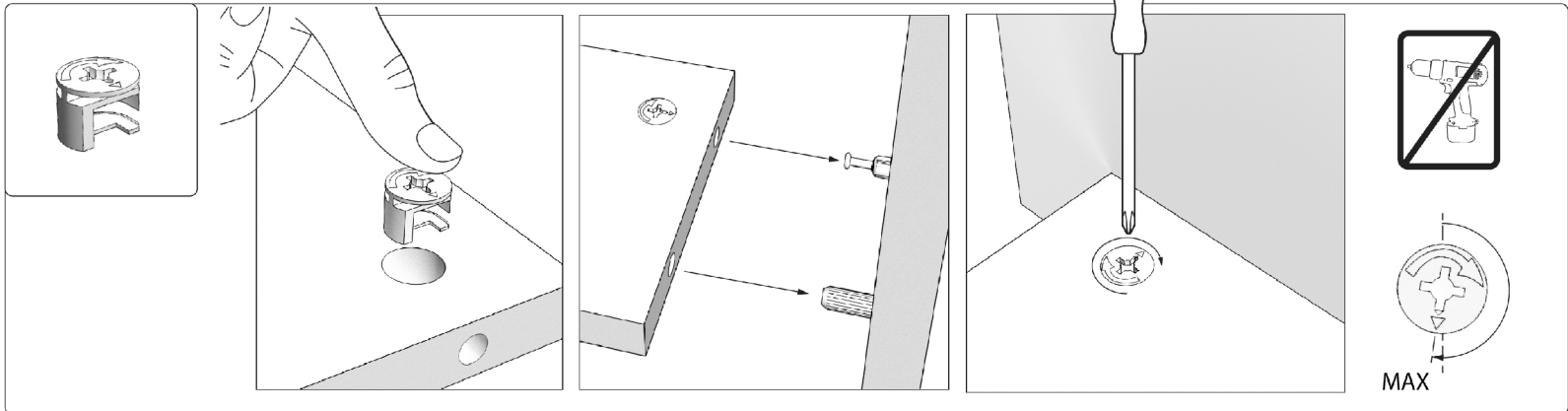
A		12	F		4
B		12	G		20
C		16	H		8
D		2	i		1
E		4	J		1

Vue d'ensemble Overview

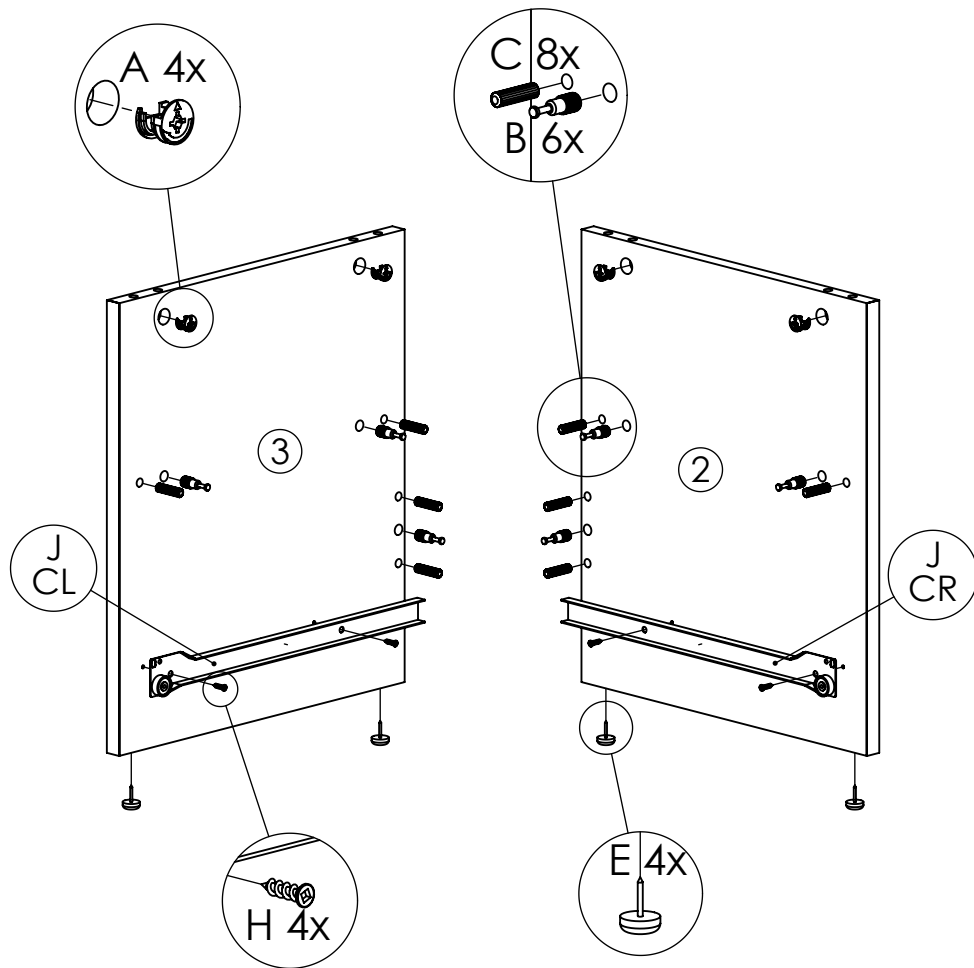
Conservez cette page
pour référence des numéros
de pièces.
Keep this page as a reference
for part numbers.



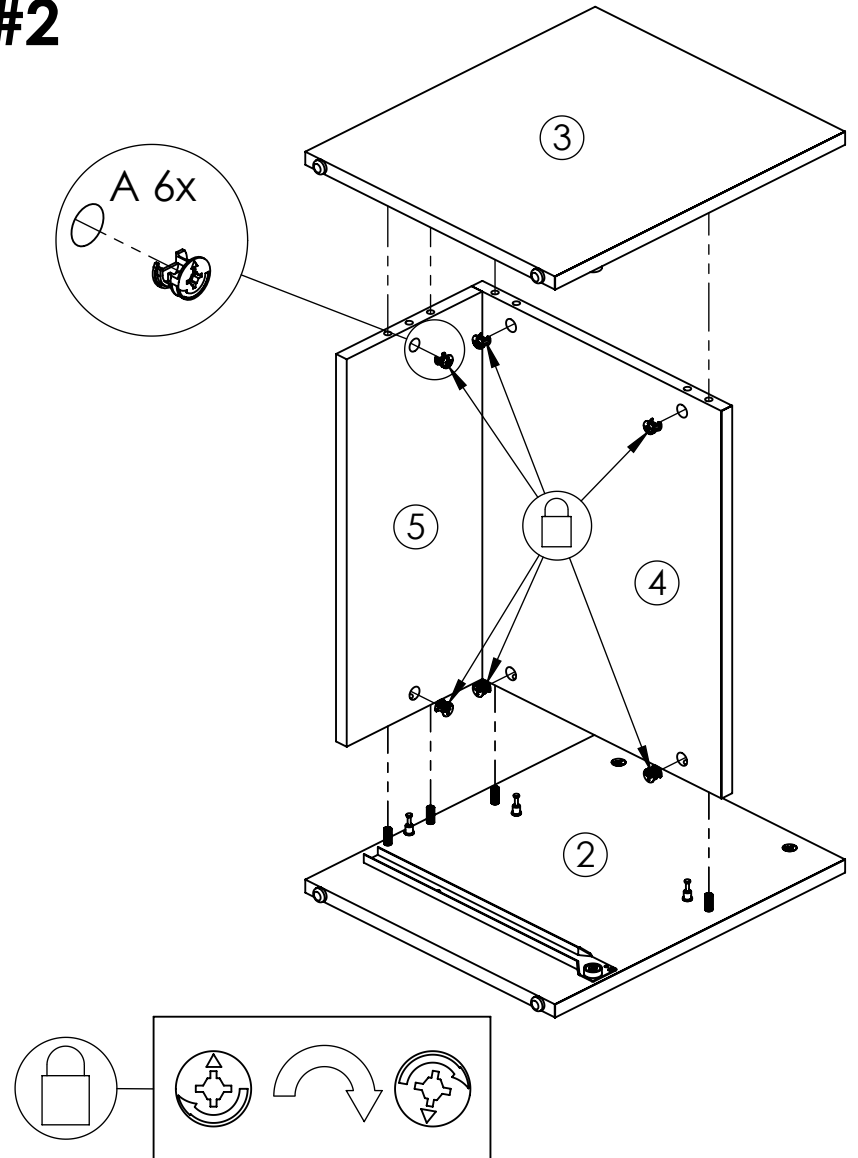
⚠ À retenir durant l'assemblage / Things to remember during assembly ⚠



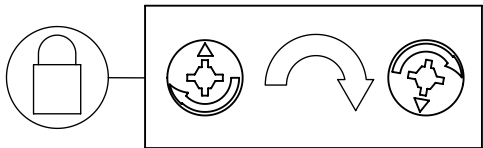
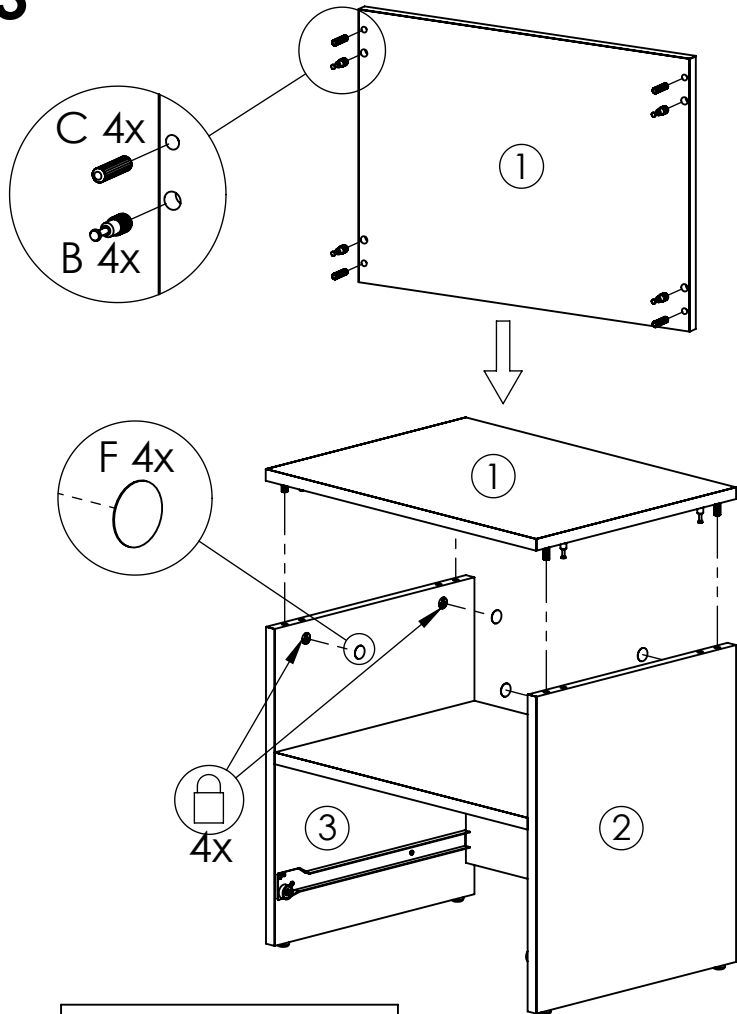
#1



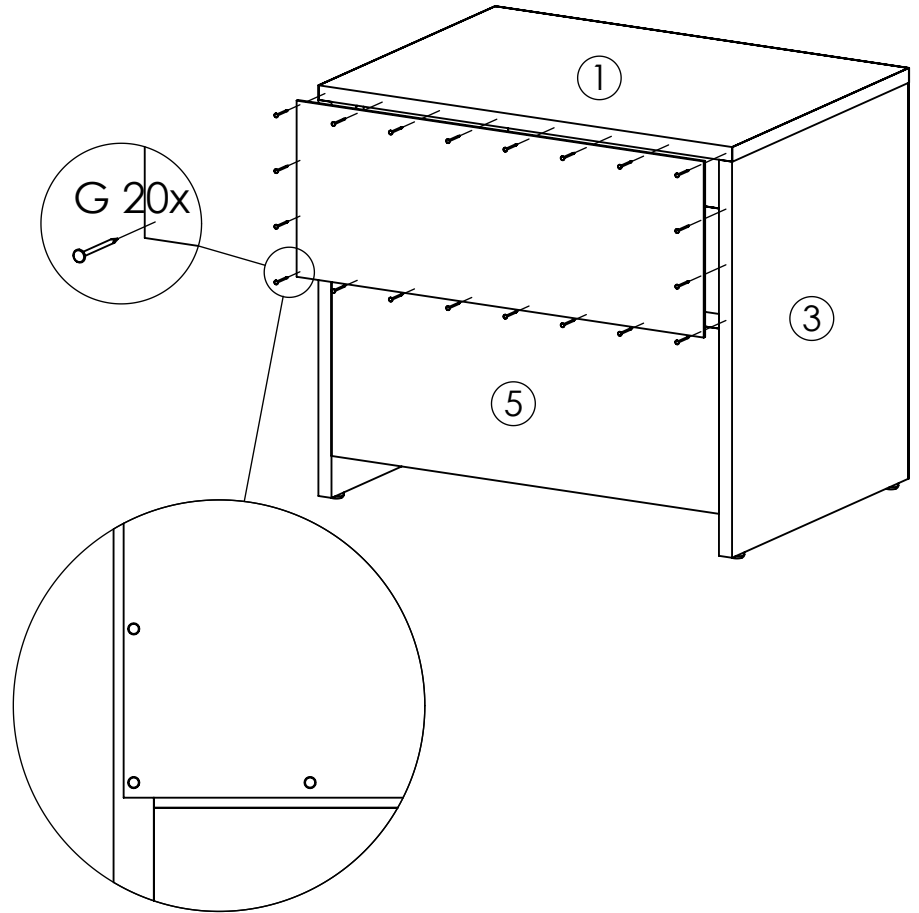
#2



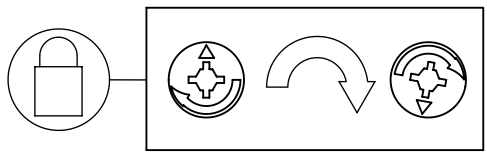
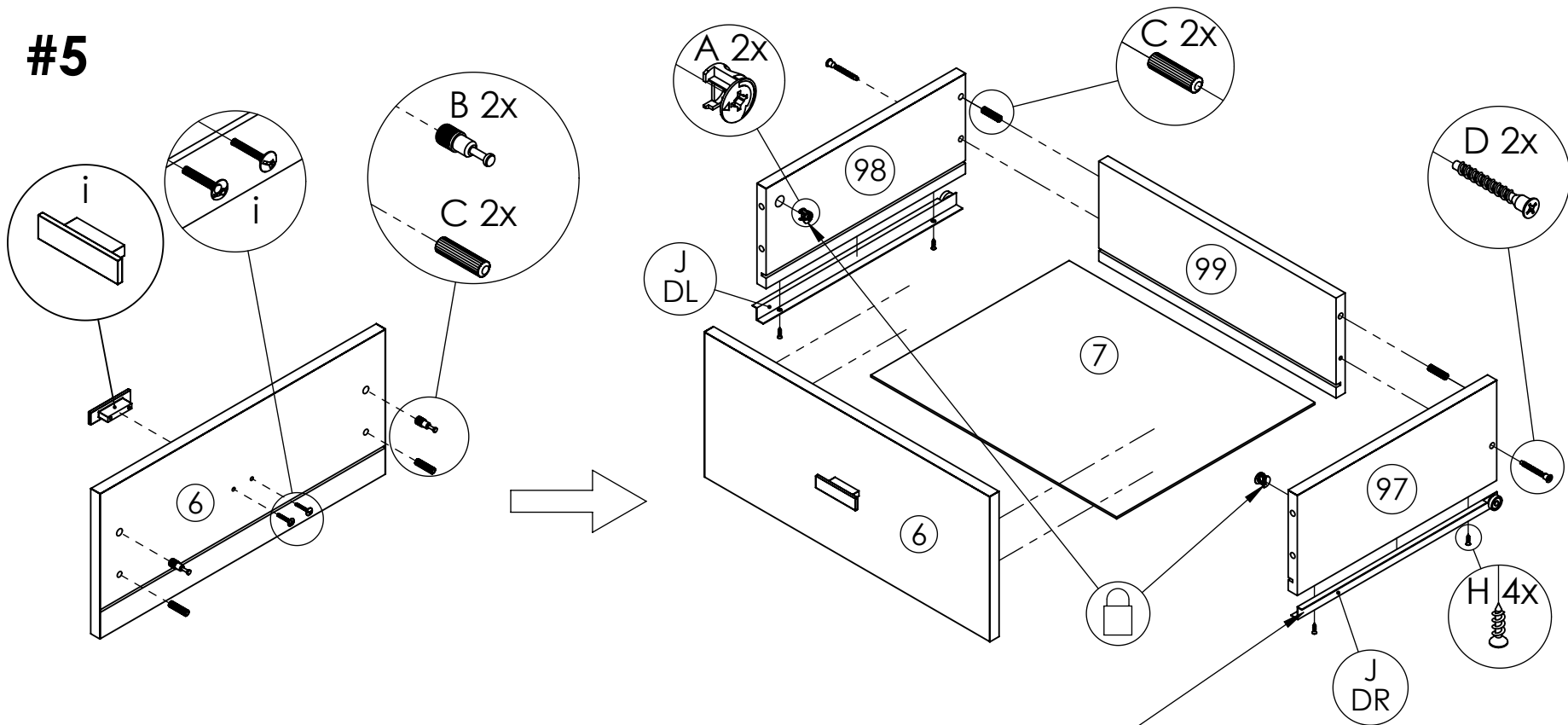
#3



#4



#5



Assembler le tiroir,
ensuite fixer les coulisses.
Assemble the drawer,
then fix the rails.

