

installation procedure



1. Preparation Before Installation

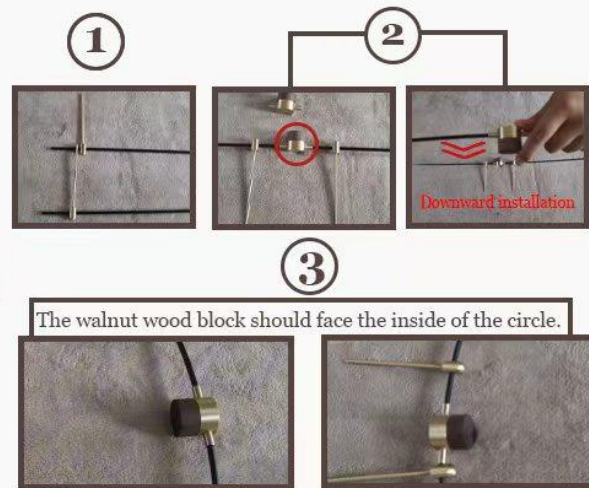
Place all accessories on the desktop for later use.

2. Install black fibers and pure copper scales

1. Insert the solid copper scales onto the black fiber one by one and arrange them properly.

2. Insert the black fiber into the copper-inlaid wood joint, press it down with your hand, and bend it upward into a circular shape. The black fiber is flexible, so pressing it down during installation makes it easier to form a circle.

3. Adjust the direction and position correctly. At this point, the walnut wood block should face the inside of the circle.



3. Install the Solid Copper Rod, Nut, and Watch Case / Clock Case

1. Insert the solid copper rod into the hole. It must protrude slightly. If it does not protrude, apply a little force gently.

2. Tighten the solid copper nut securely. The nut at the other end of the top of the wall clock is matched with a solid copper rod of approximately 10 centimeters.

3. Orient the middle nut post with its small-diameter end facing upward. Release the clock case (all case variants share identical construction). Position the screws in their respective fastening locations, then secure them using a hexagon tool to achieve proper torque.

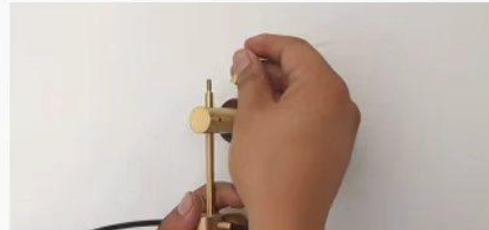


4. Install the Expansion Bolt, Decorative Plate (as well as the Framework and Nut)



1. Drill an 8mm-diameter pilot hole in the wall, then insert the expansion bolt into the hole. Assemble the walnut decorative plate with the hanging bracket. Fasten the assembled unit to the wall and ensure it is fully tightened to secure it in place.

2. Pass the framework through the hole and secure it with another solid copper nut.



5. Install the Small White Post and Battery



1. Screw the small white post onto the back of the middle plate. It serves a supporting function, though installation is optional.

2. Pay attention to the positive and negative poles of the battery, then install the battery in place. Fasten the other half of the clock case to close it.

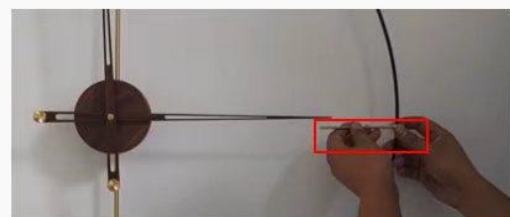


6. Install the Hour Hand and Minute Hand (and Set the Time)



1. First, install the shorter hour hand, aligning it vertically at the 12 o'clock position. Press it down firmly until it can no longer move. Next, install the longer minute hand, also aligning it at the 12 o'clock position. **Press it down firmly until it is fully seated and cannot move further.** Ensure the decorative ends of both hands face outward.

2. Rotate the longer minute hand clockwise to set the time, positioning it at the 3 o'clock mark. Then, fully tighten the solid copper marker in place. Repeat the same process to position the minute hand at the 9 o'clock mark, and secure the other solid copper marker accordingly.



Top hanging head side edge



3. Secure the M3 Screw on the Side of the Hanging Bracket
By following the steps above, you can complete the assembly of the clock.