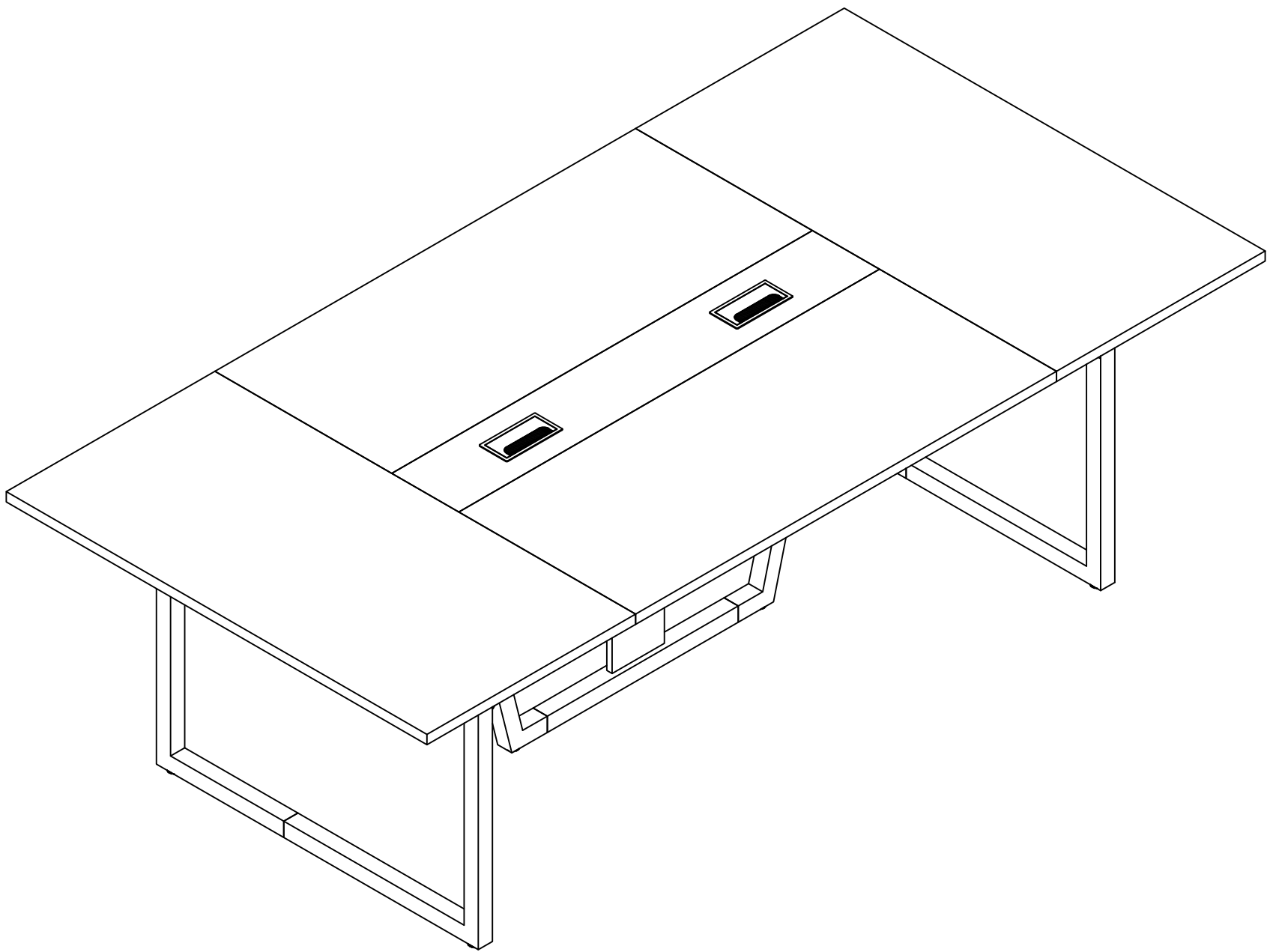


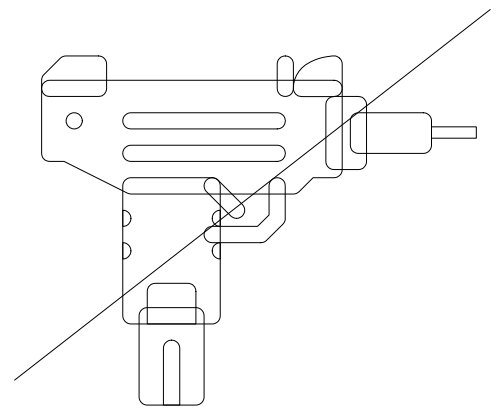
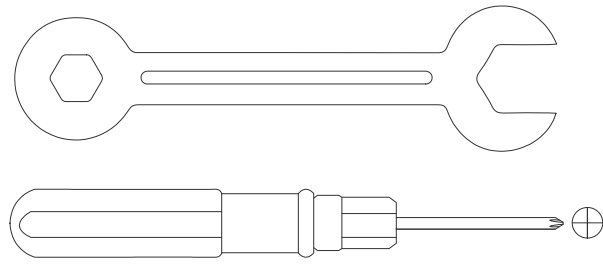
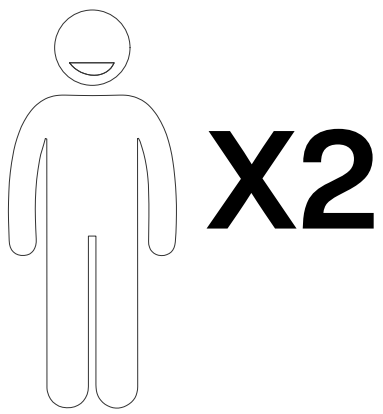
Assembly Instructions



Conference table

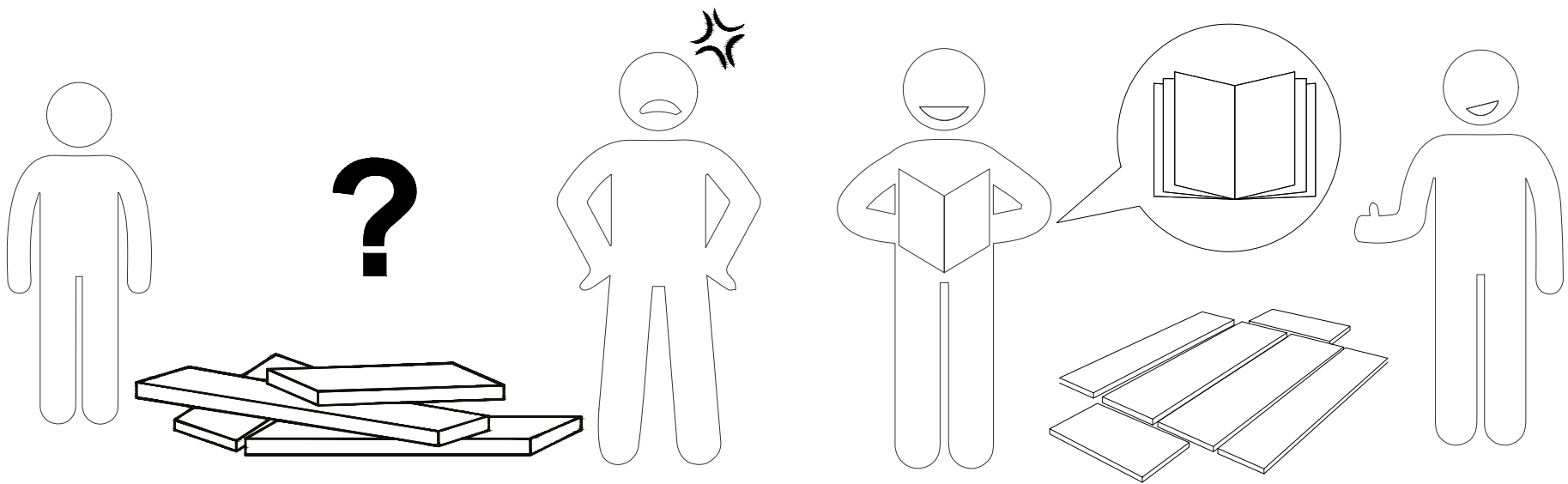
Warm Tips

1. Carefully read these instructions and keep them for future reference.
2. Check the parts list and confirm everything's there before starting assembly.
3. When assembling, put all parts on a soft, smooth surface like a carpet to avoid scratches.
4. Don't fully tighten screws until all parts are confirmed in place to avoid misalignment.



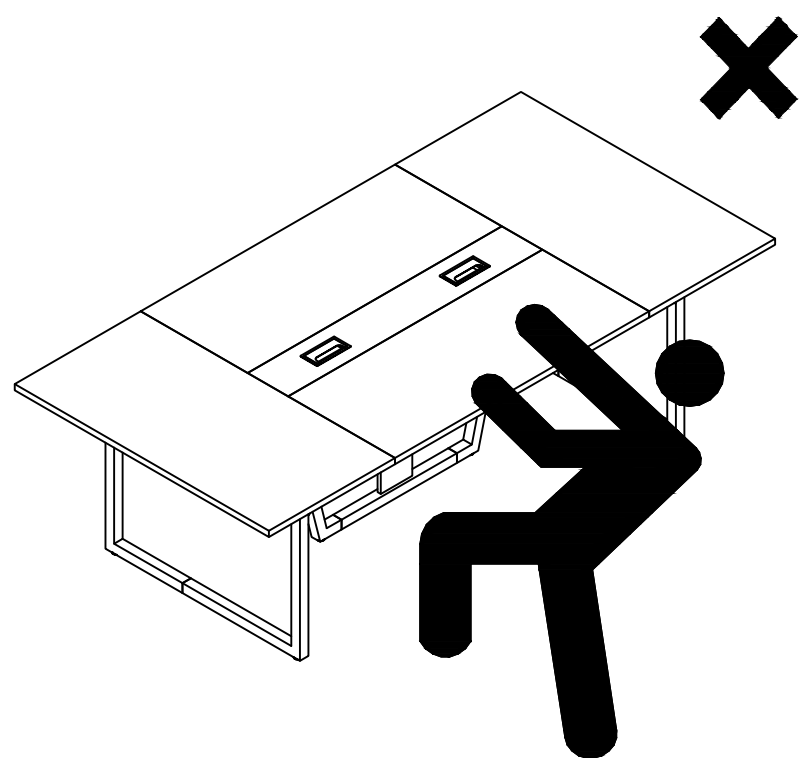
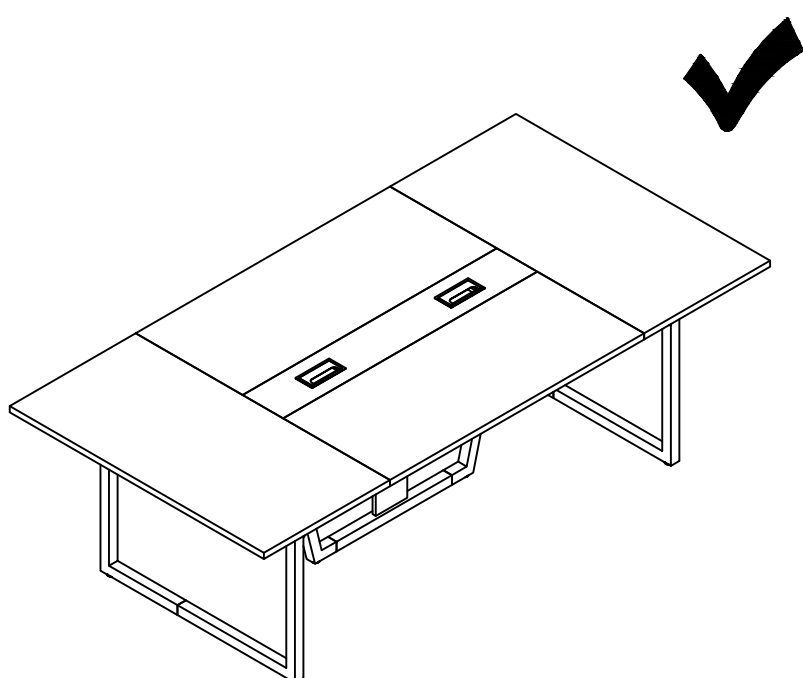
We recommend using hand tools for assembly.

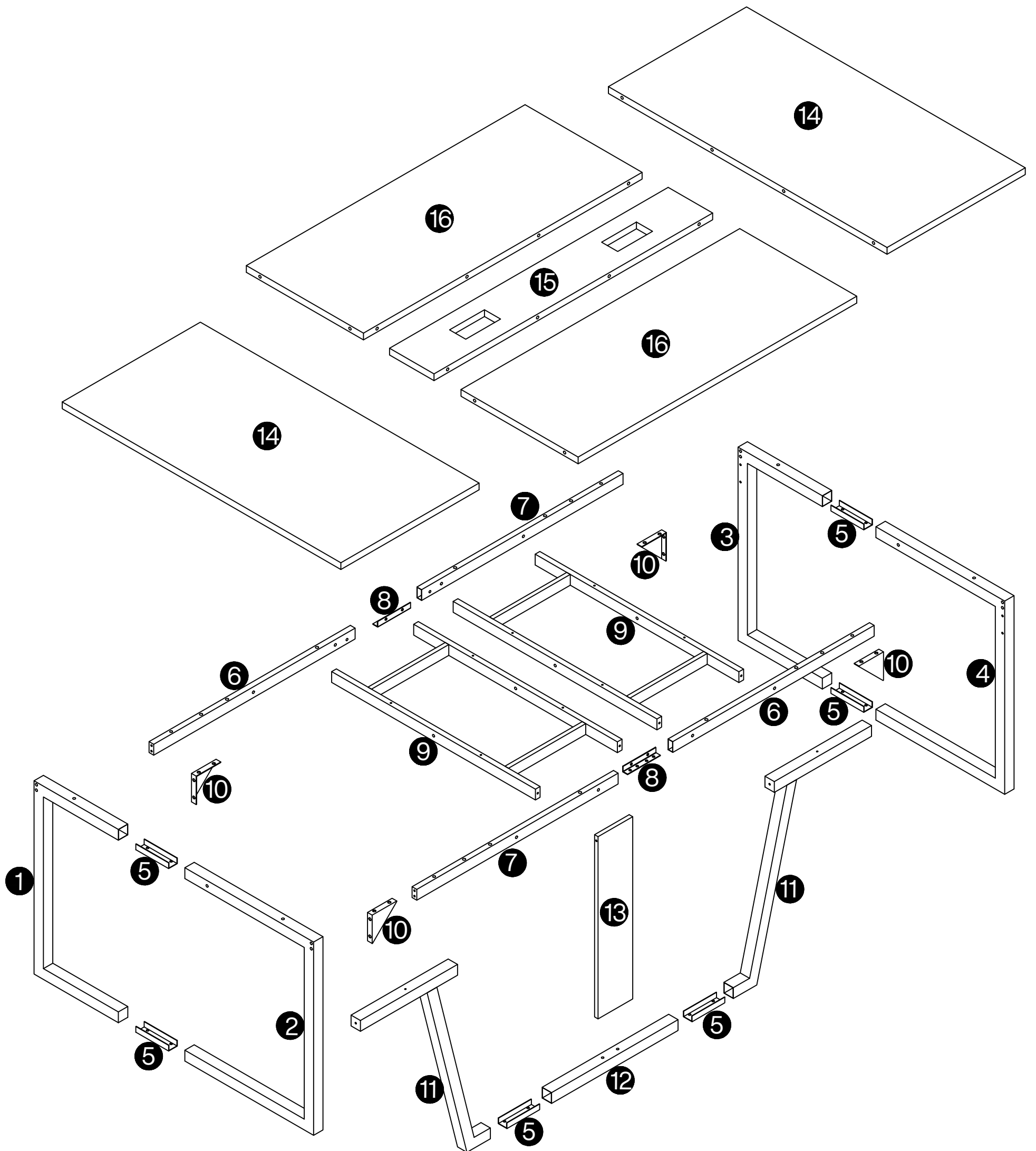
If an electric screwdriver is used, reduce power and torque to avoid damage to the product.



Install the Anti-Tip Straps

Using the anti-tip straps can reduce the risk of tipping over, but can not eliminate it.

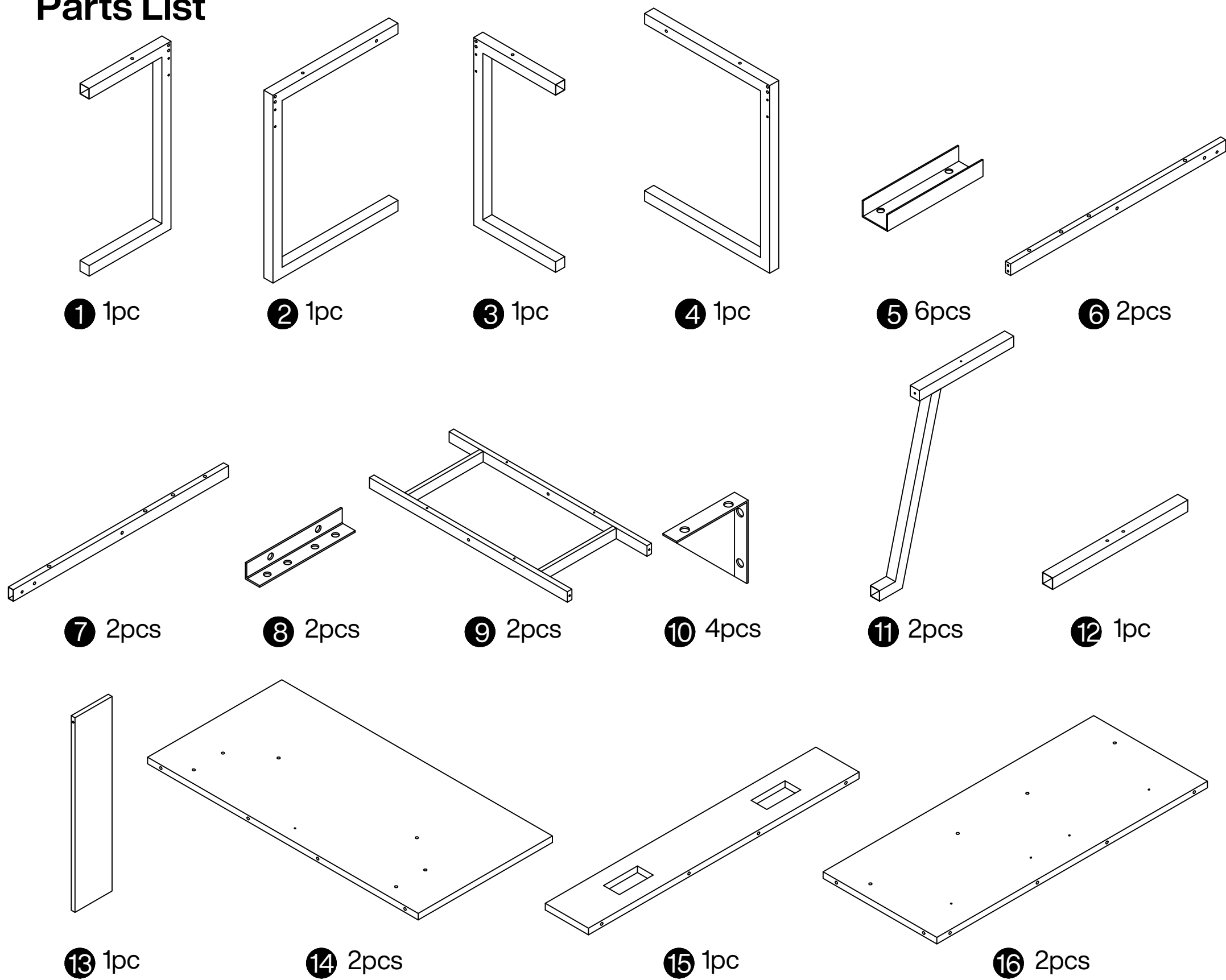




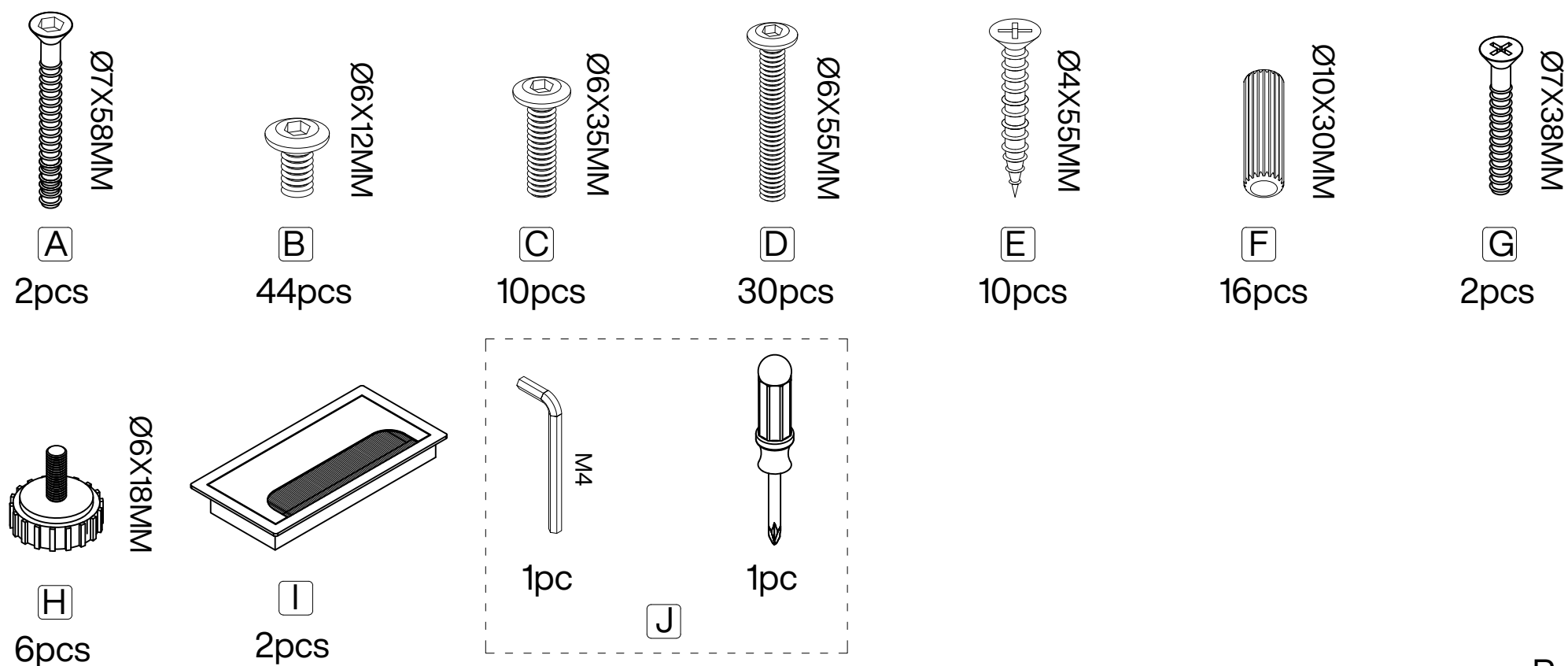
⚠ Caution

Make sure all parts are included. Most board parts are labeled or stamped on the raw edge. Contact us for a free replacement if you encounter any damaged or missing parts.

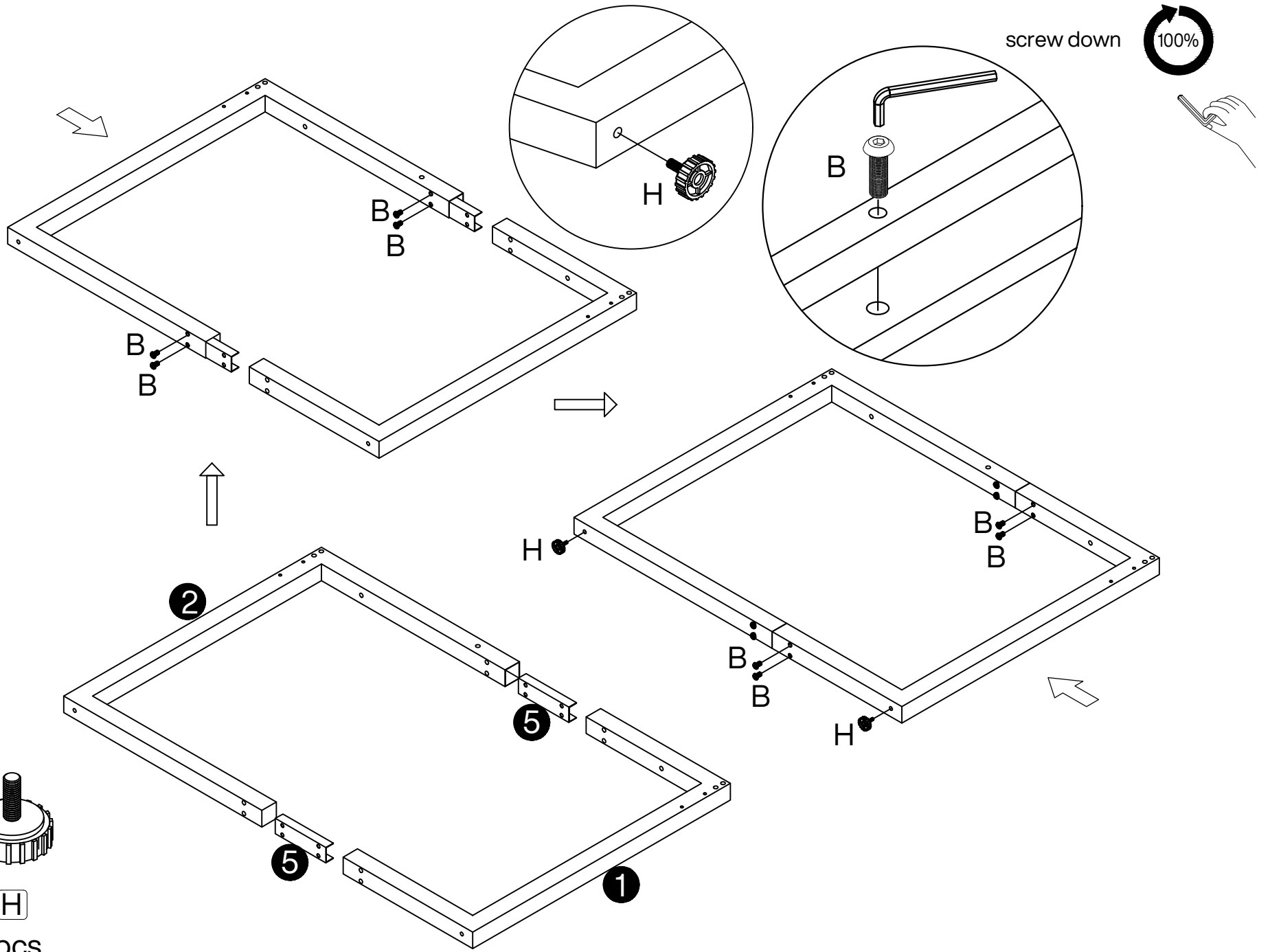
Parts List



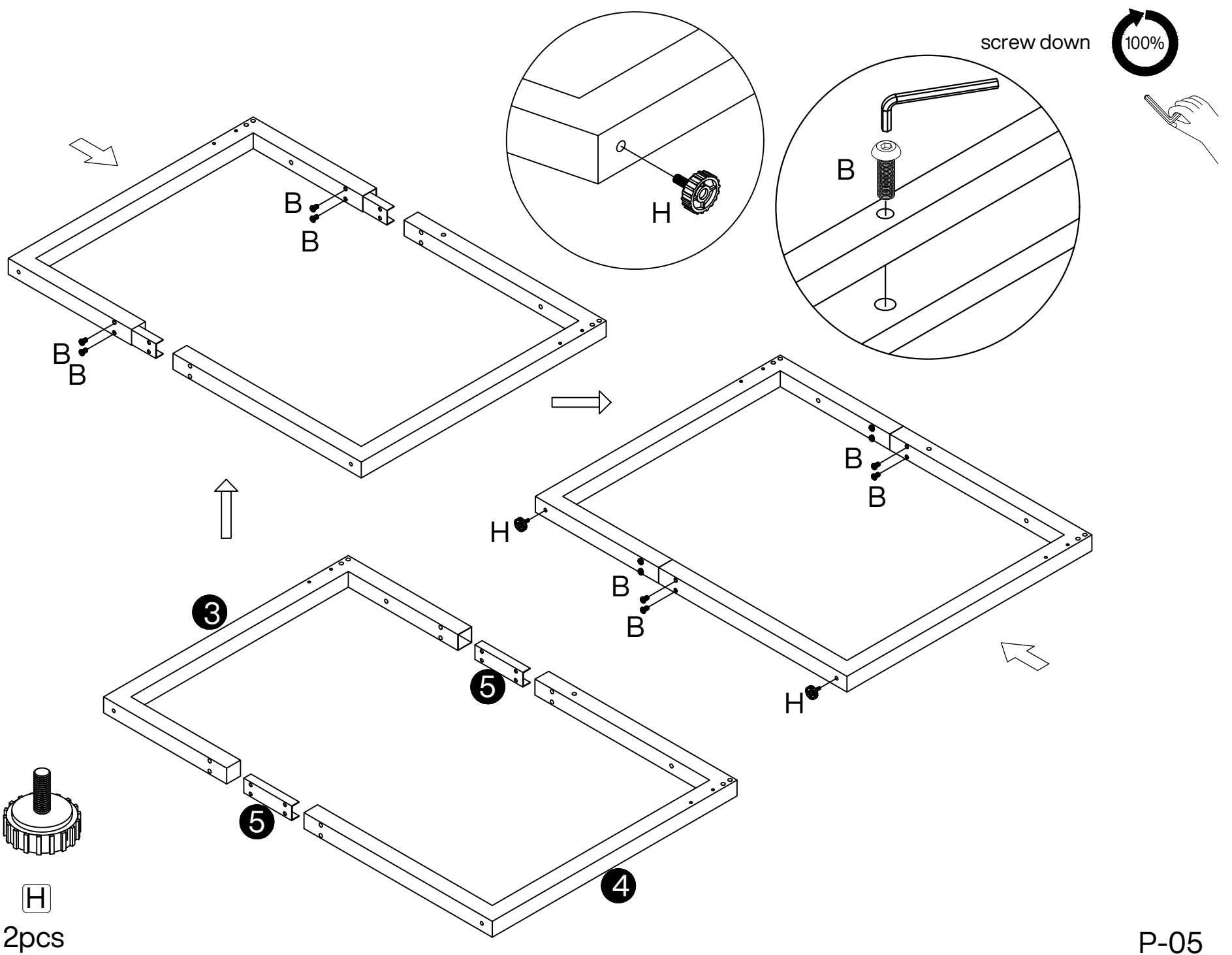
Hardware List



1

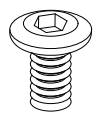
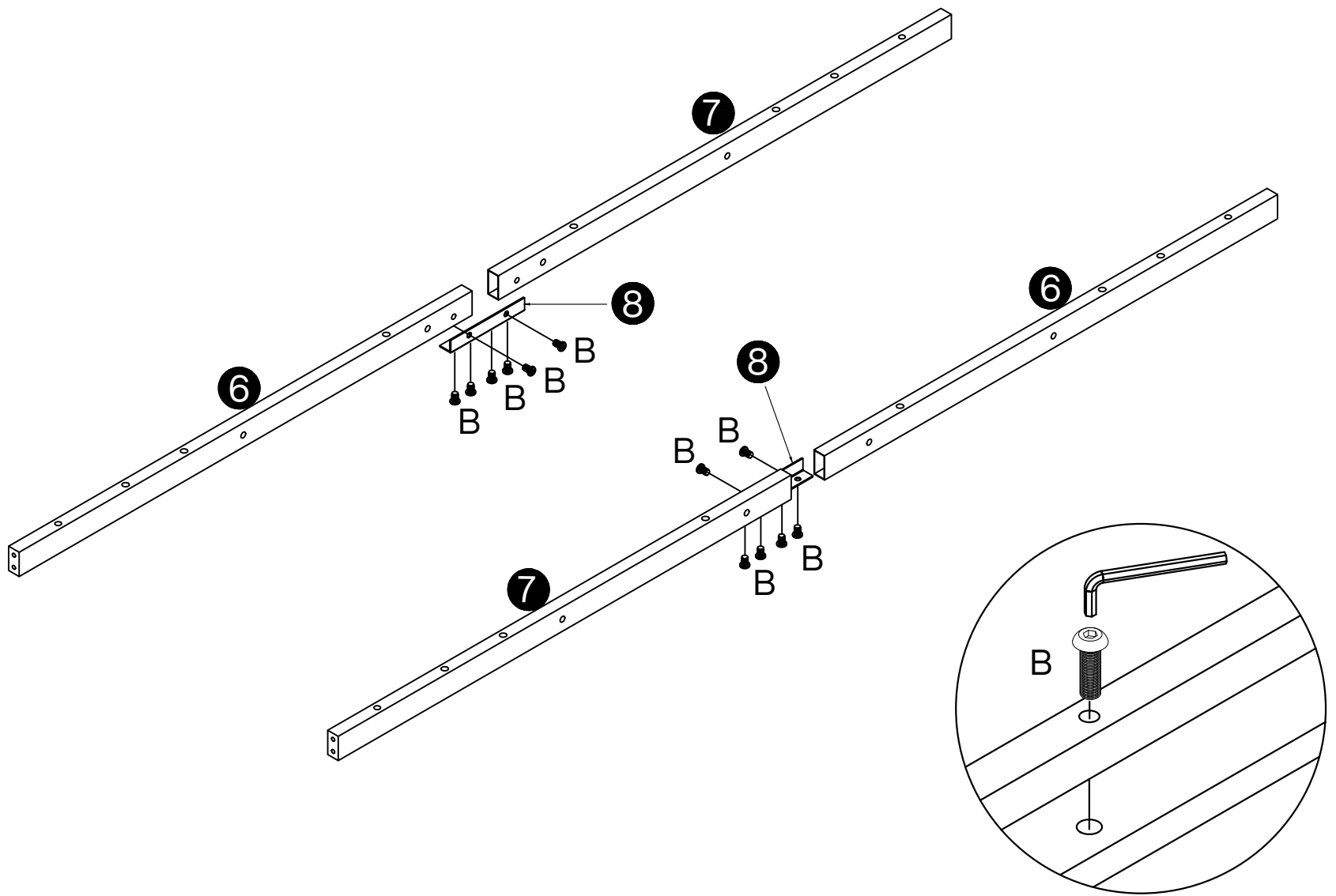
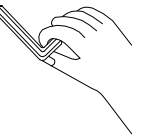


2



3

screw down 100%

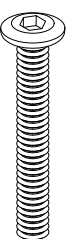
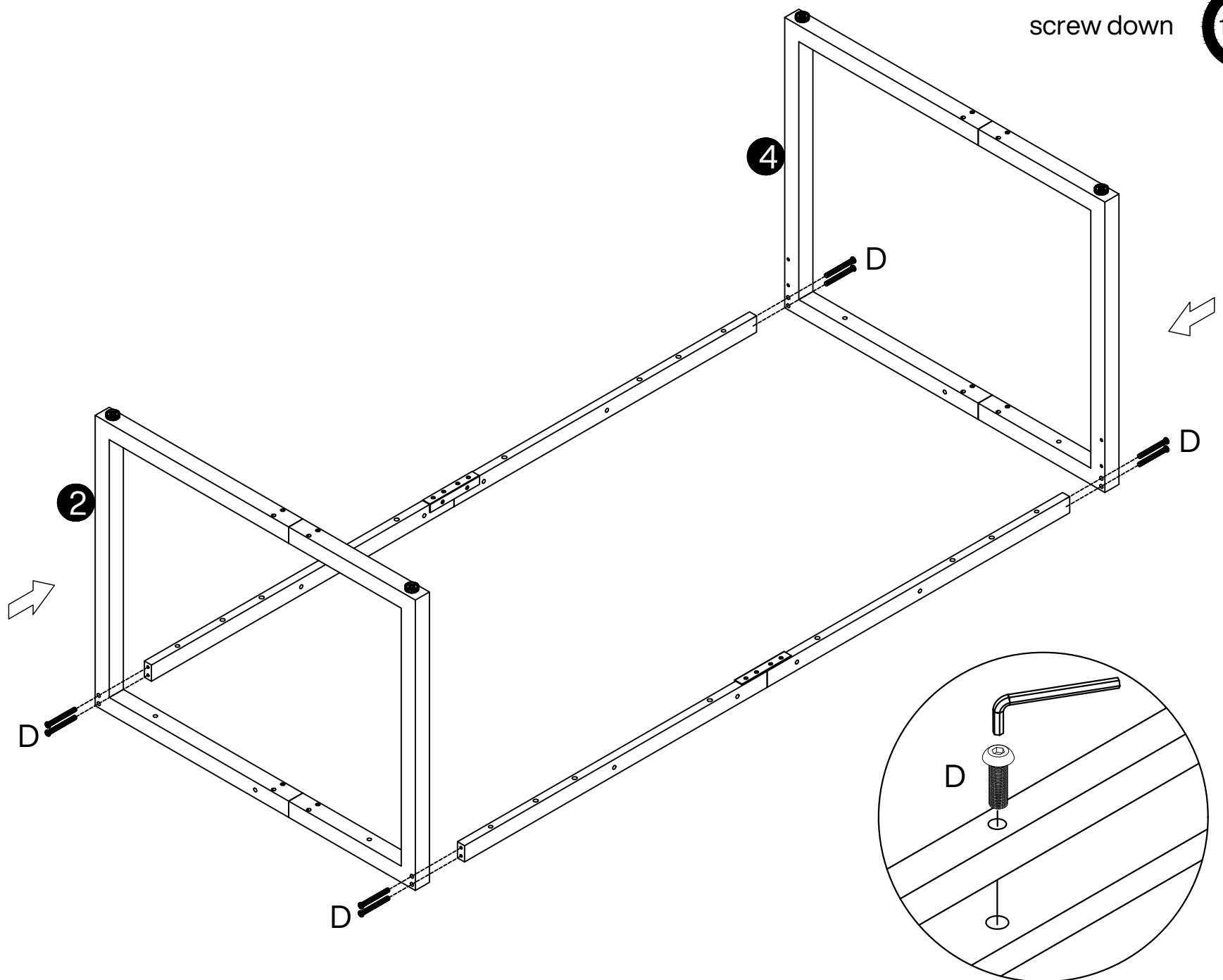
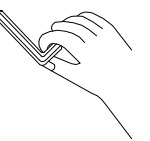


B

12pcs

4

screw down 100%

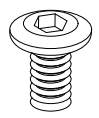
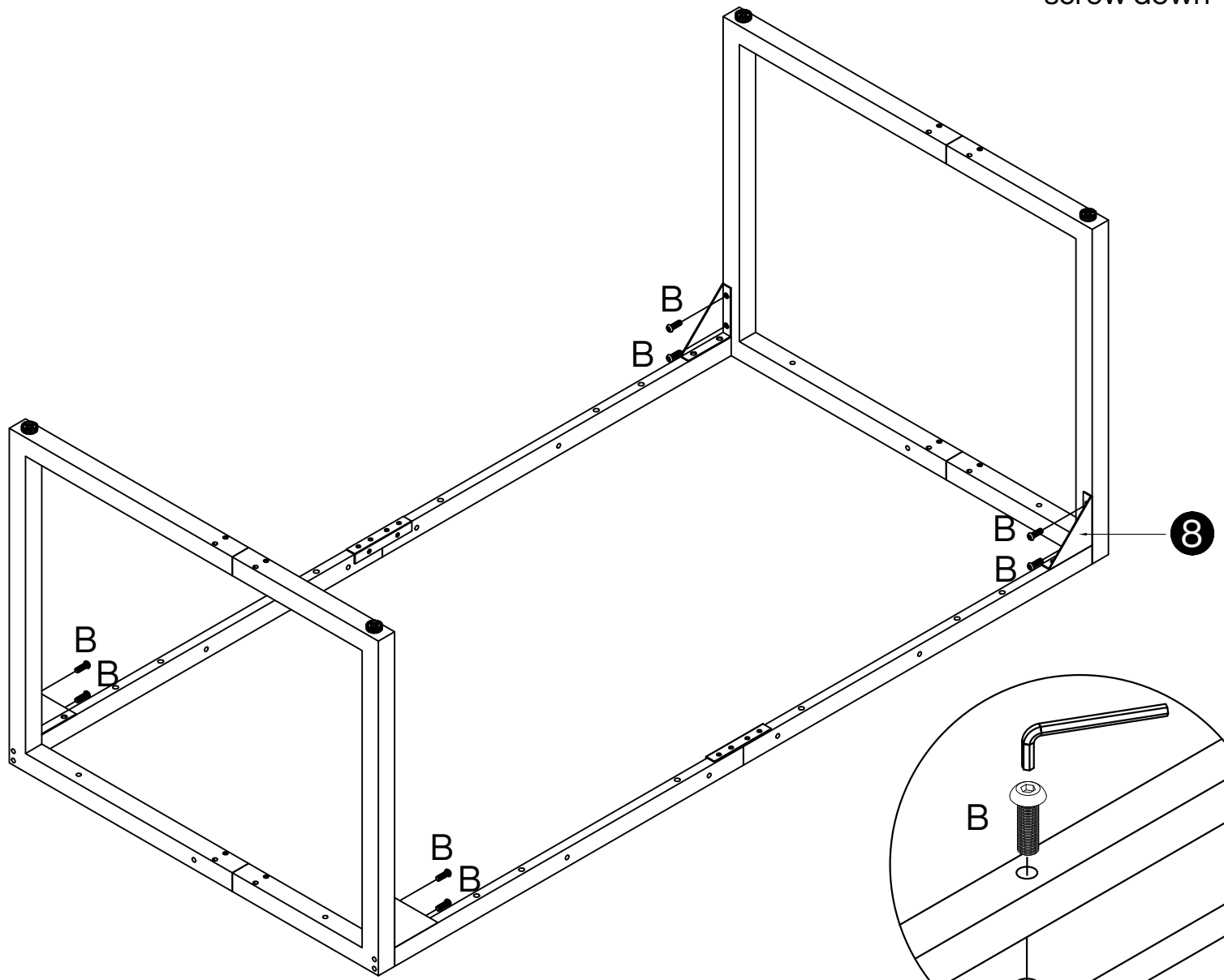
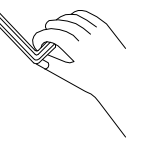


D

8pcs

5

screw down 100%

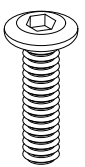
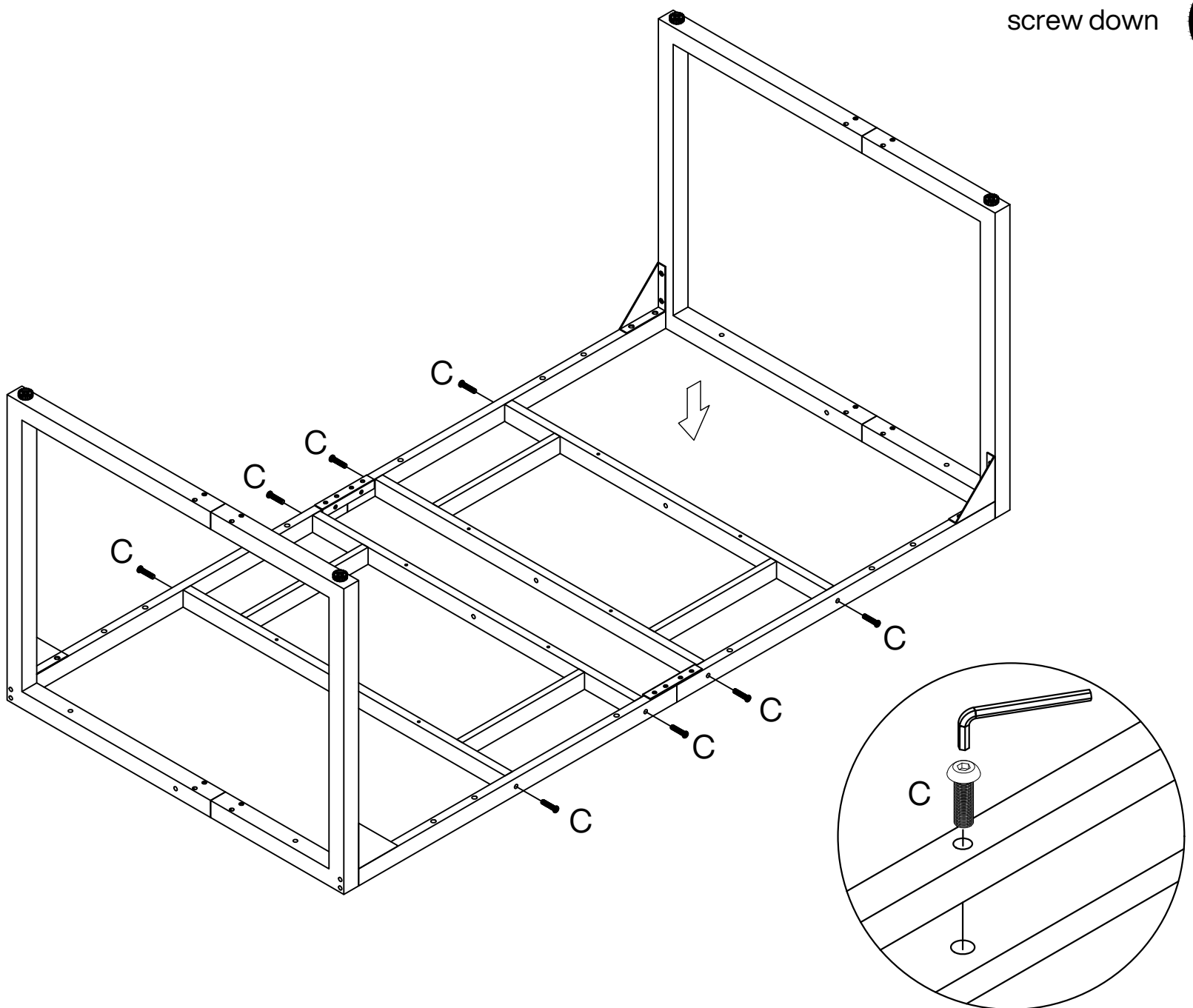


B

8pcs

6

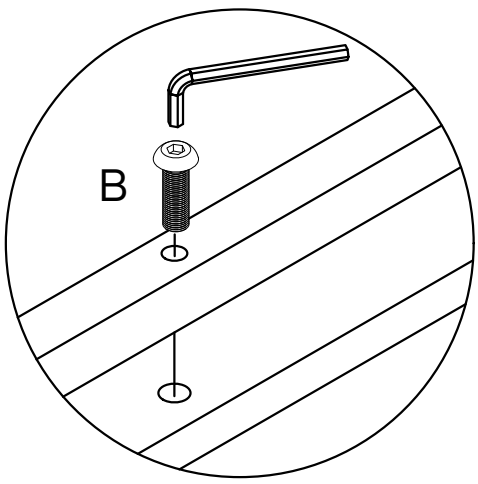
screw down 100%

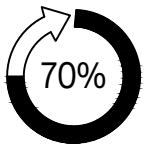


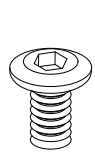
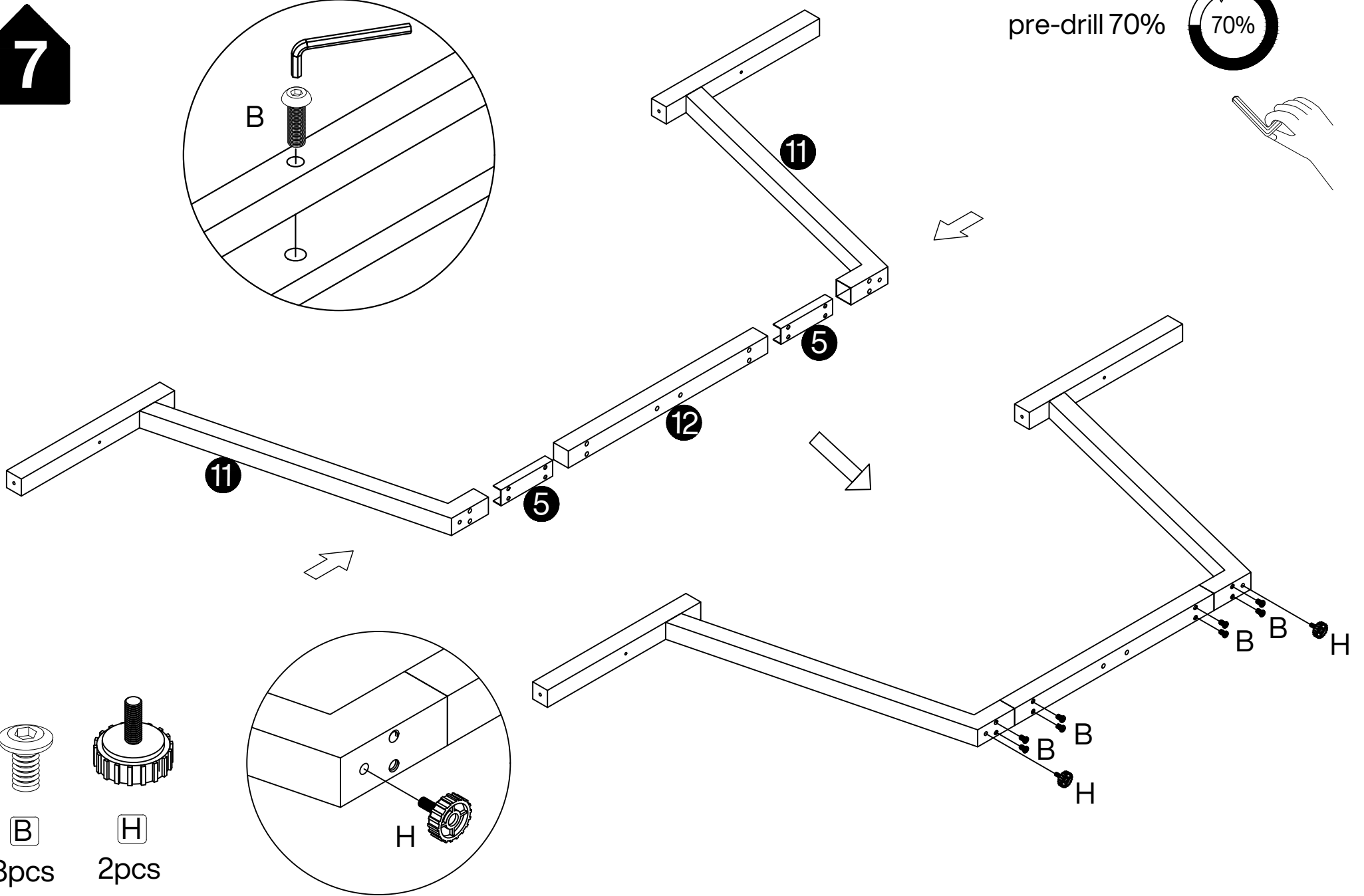
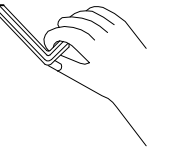
C

8pcs

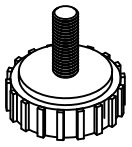
7



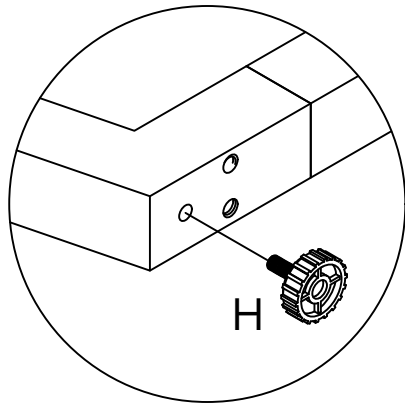
pre-drill 70% 



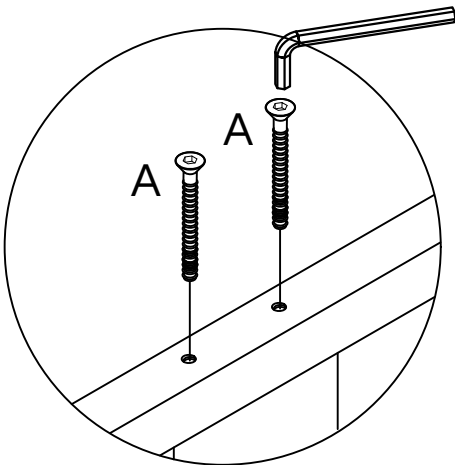
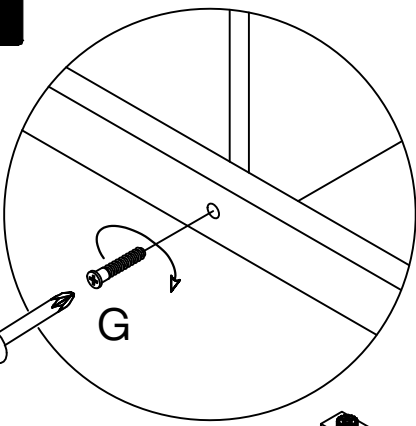
B
8pcs



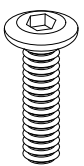
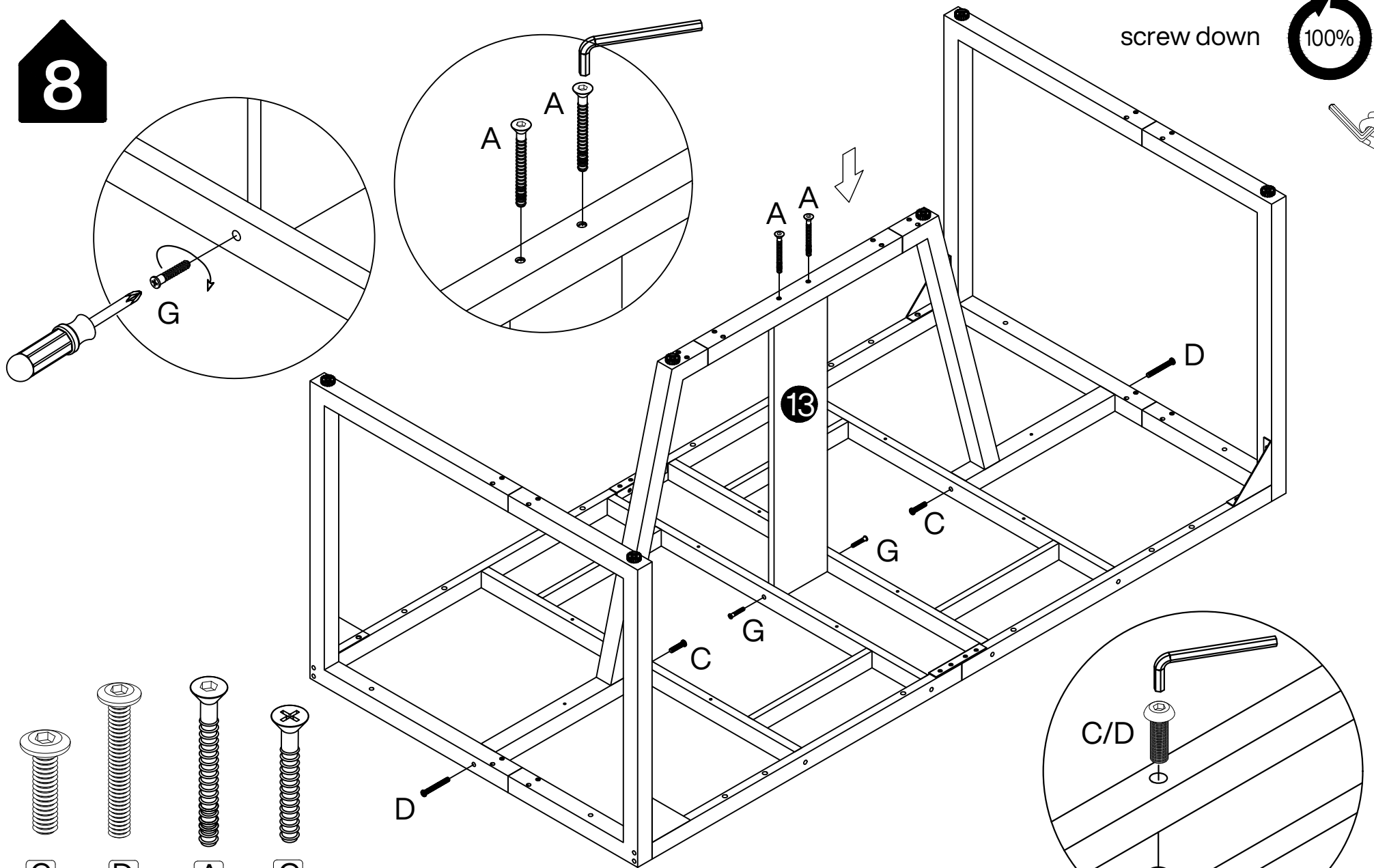
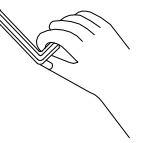
H
2pcs



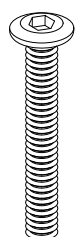
8



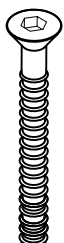
screw down 



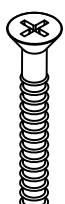
C
2pcs



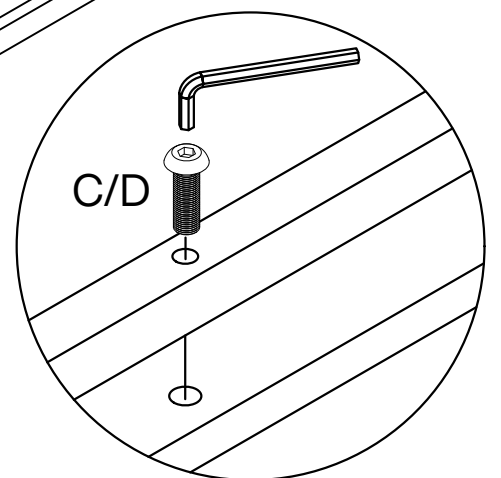
D
2pcs



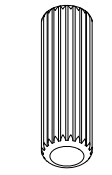
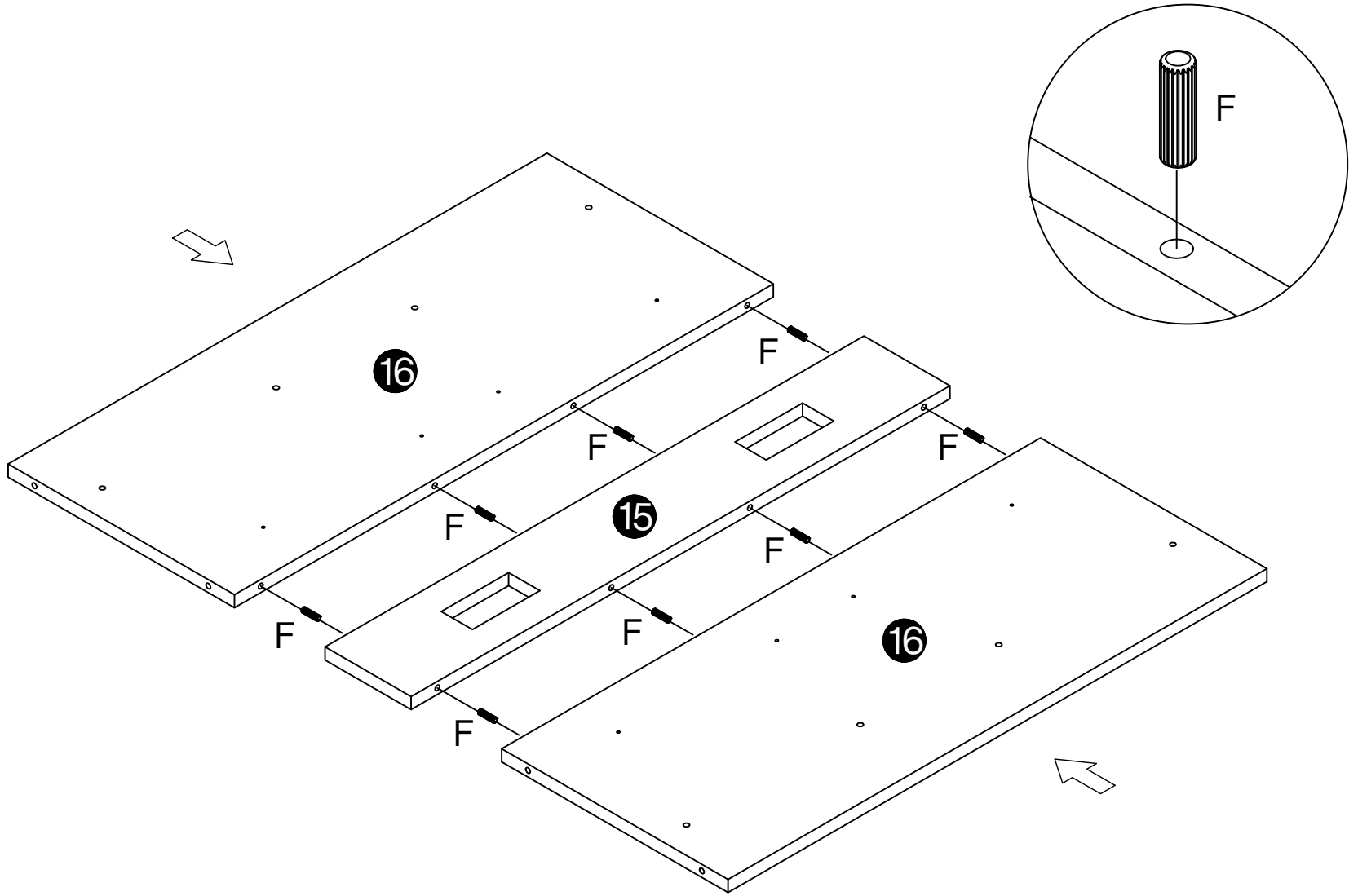
A
2pcs



G
2pcs

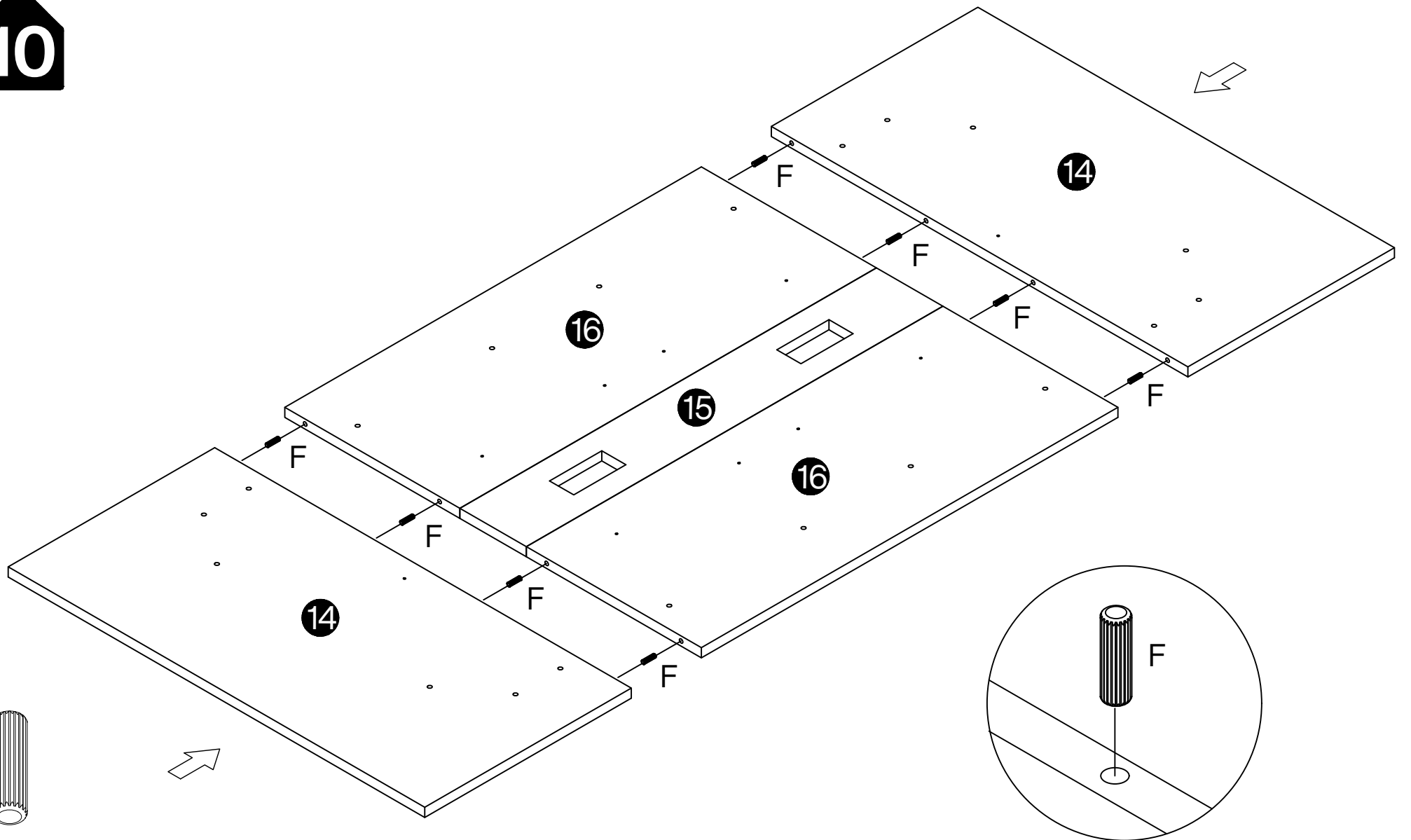


9



F
8pcs

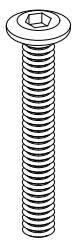
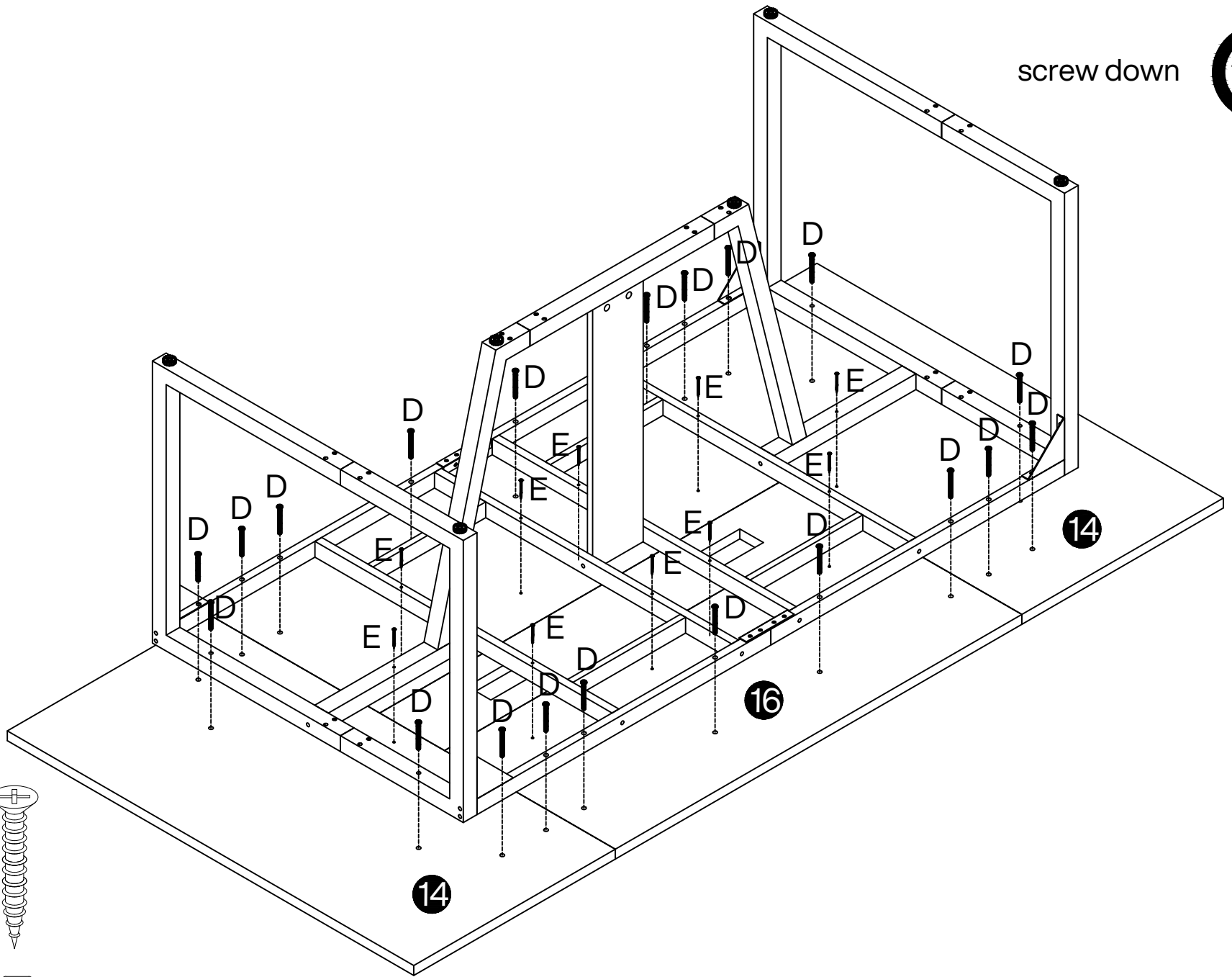
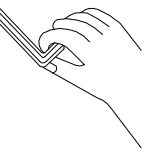
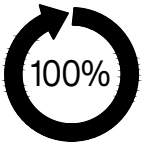
10



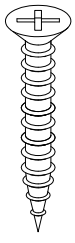
F
8pcs

11

screw down

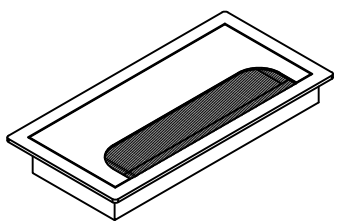
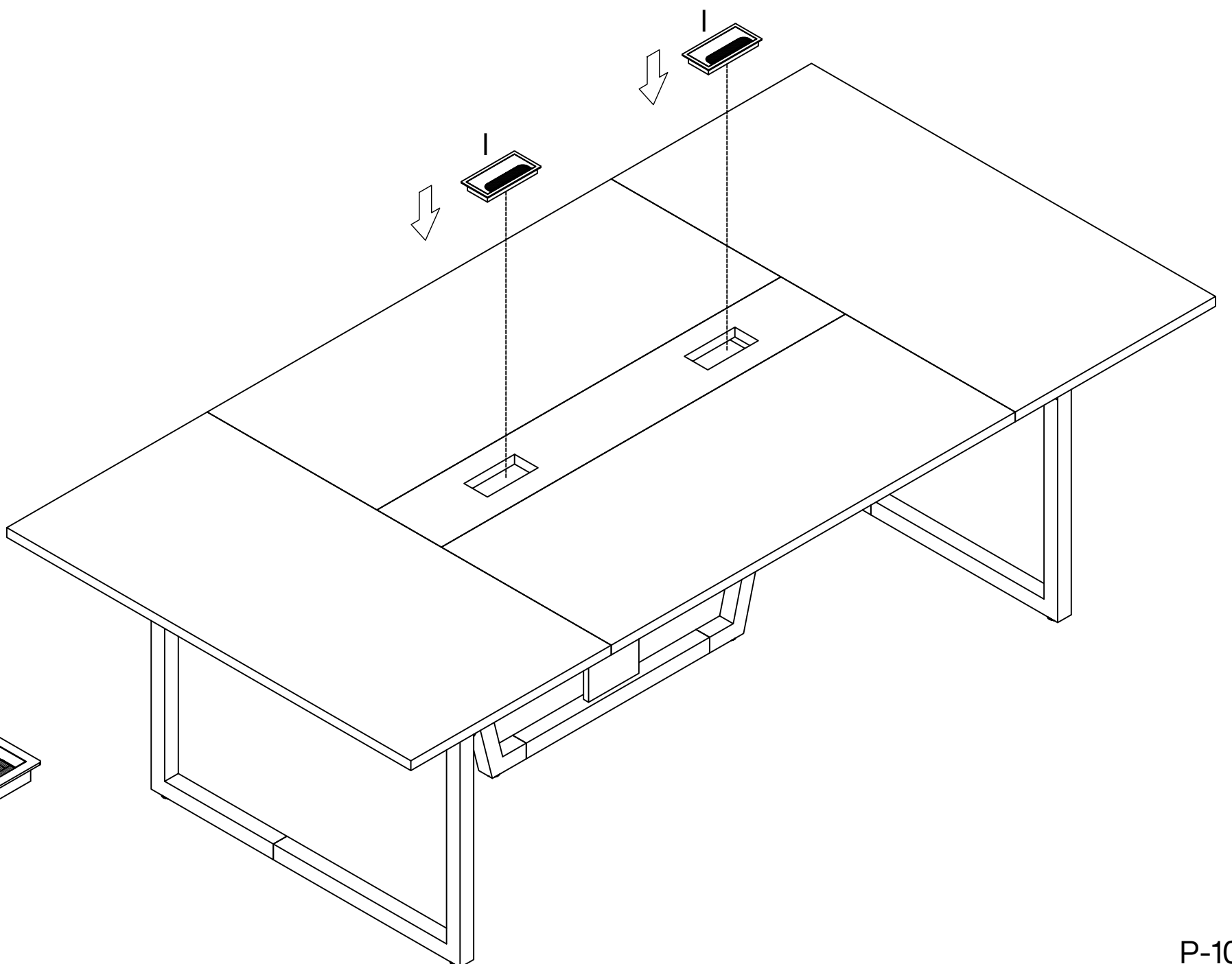


D
20pcs



E
10pcs

12



I
2pcs

Thank you for your support !

