

# Manual Swivel Glider Recliner Chair

## Assembly Manual

### MM7A5068



### **▲ CAUTION**

THIS ASSEMBLY MANUAL CONTAINS IMPORTANT SAFETY INFORMATION.  
PLEASE READ AND KEEP FOR FUTURE REFERENCE.

# COMPONENTS

**A** Chair Back  
1X

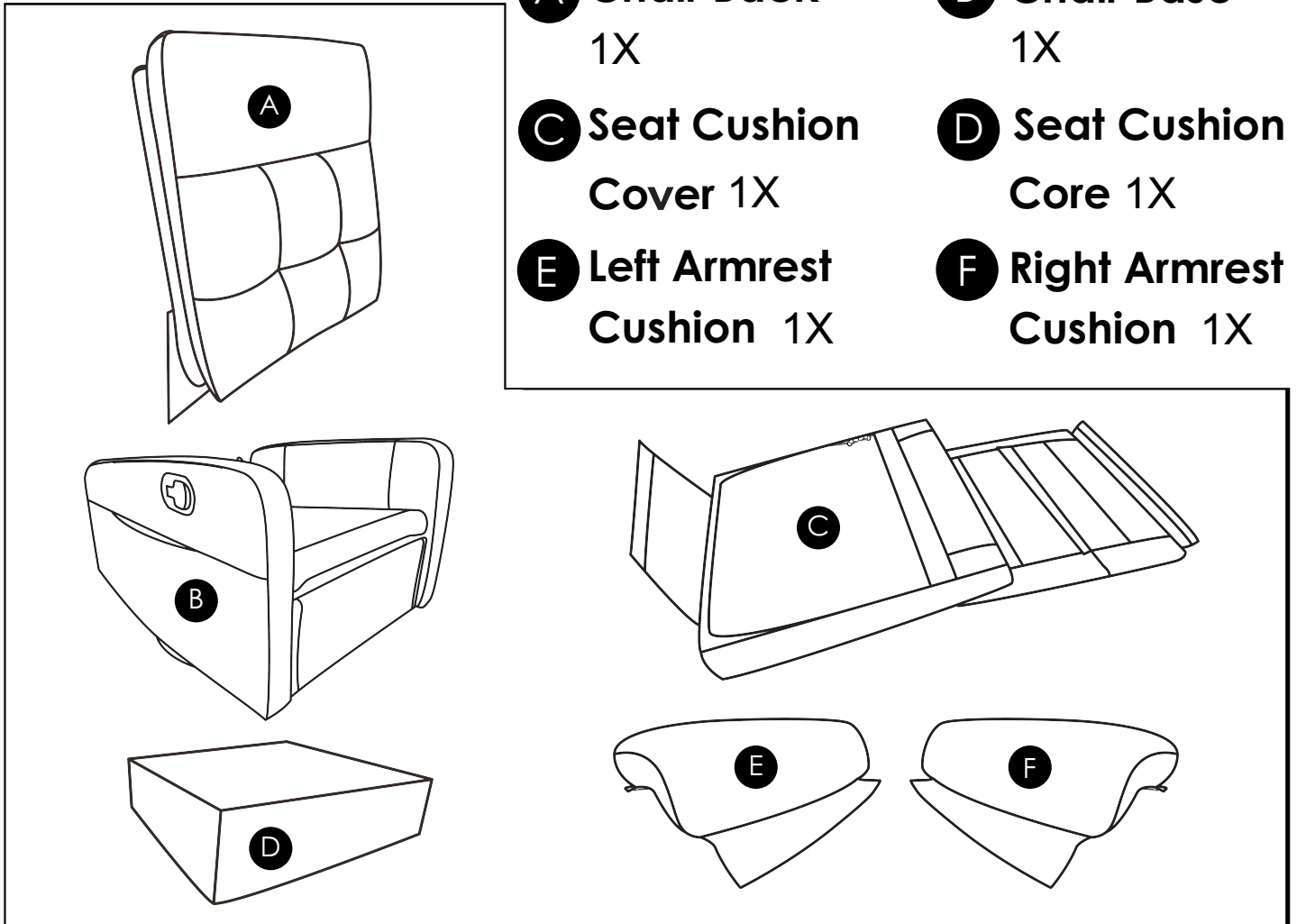
**B** Chair Base  
1X

**C** Seat Cushion  
Cover 1X

**D** Seat Cushion  
Core 1X

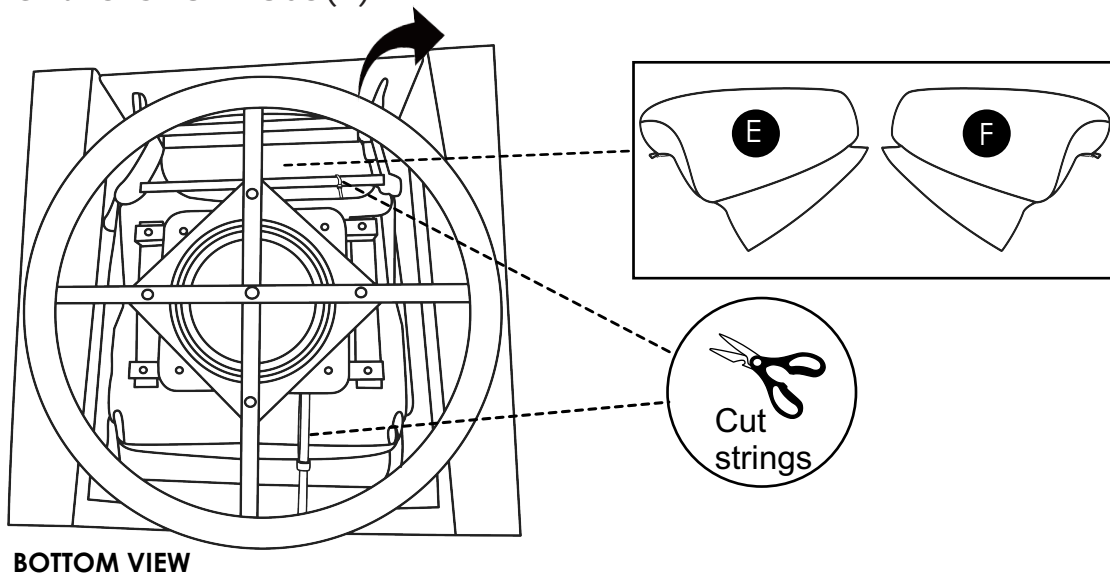
**E** Left Armrest  
Cushion 1X

**F** Right Armrest  
Cushion 1X



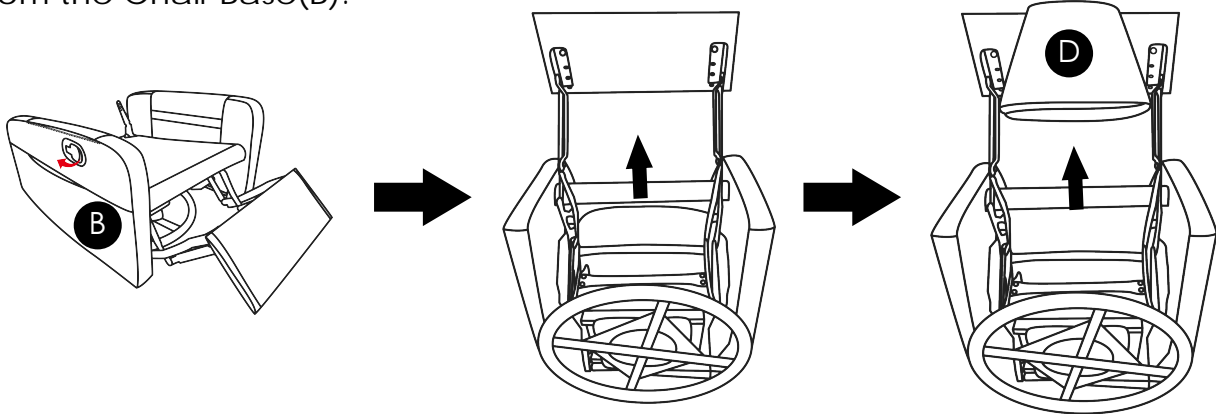
Before you begin:

First cut off the fixed straps and locate the Armrest Cushion(E) &(F) from the bottom of the Chair Base(B).

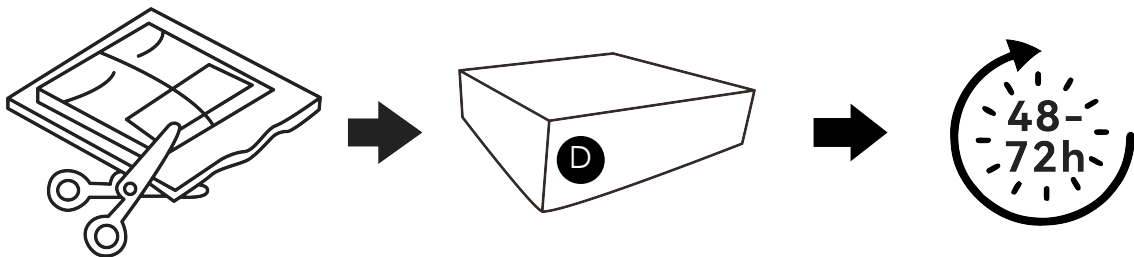


**BOTTOM VIEW**

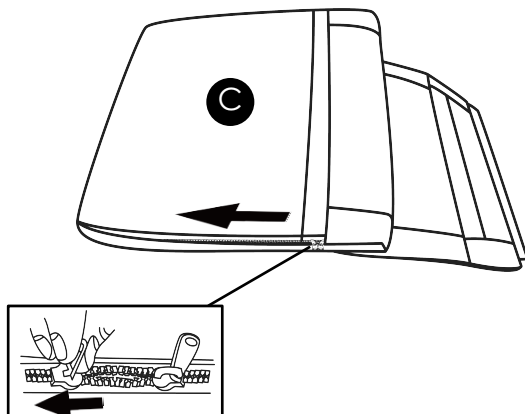
- 1 Open the base plate of the seat frame and locate the Seat Cushion Core(D) from the Chair Base(B).



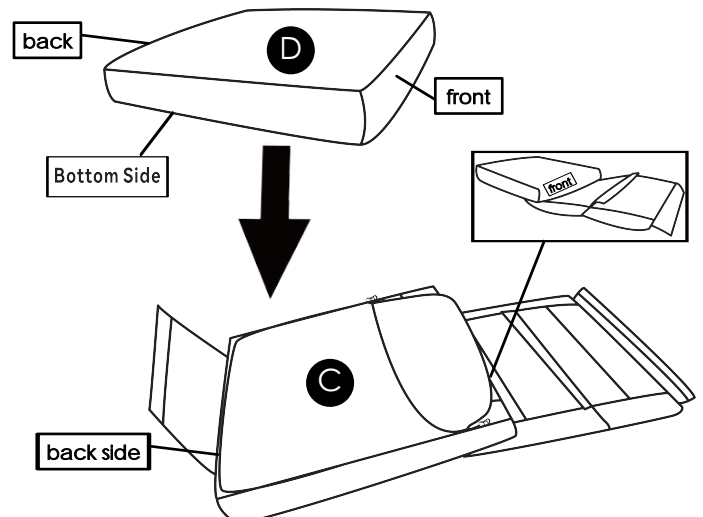
- 2 Open the sealed bag with scissors (be careful when using scissors). It may take 48-72hours for the Seat Cushion Core (D) to its fluffy state, please be patient.



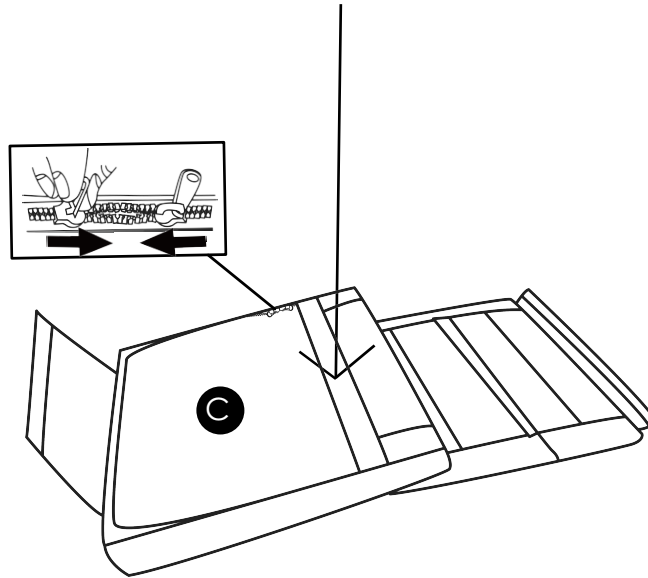
- 3 First, unzip the Seat Cushion Cover.



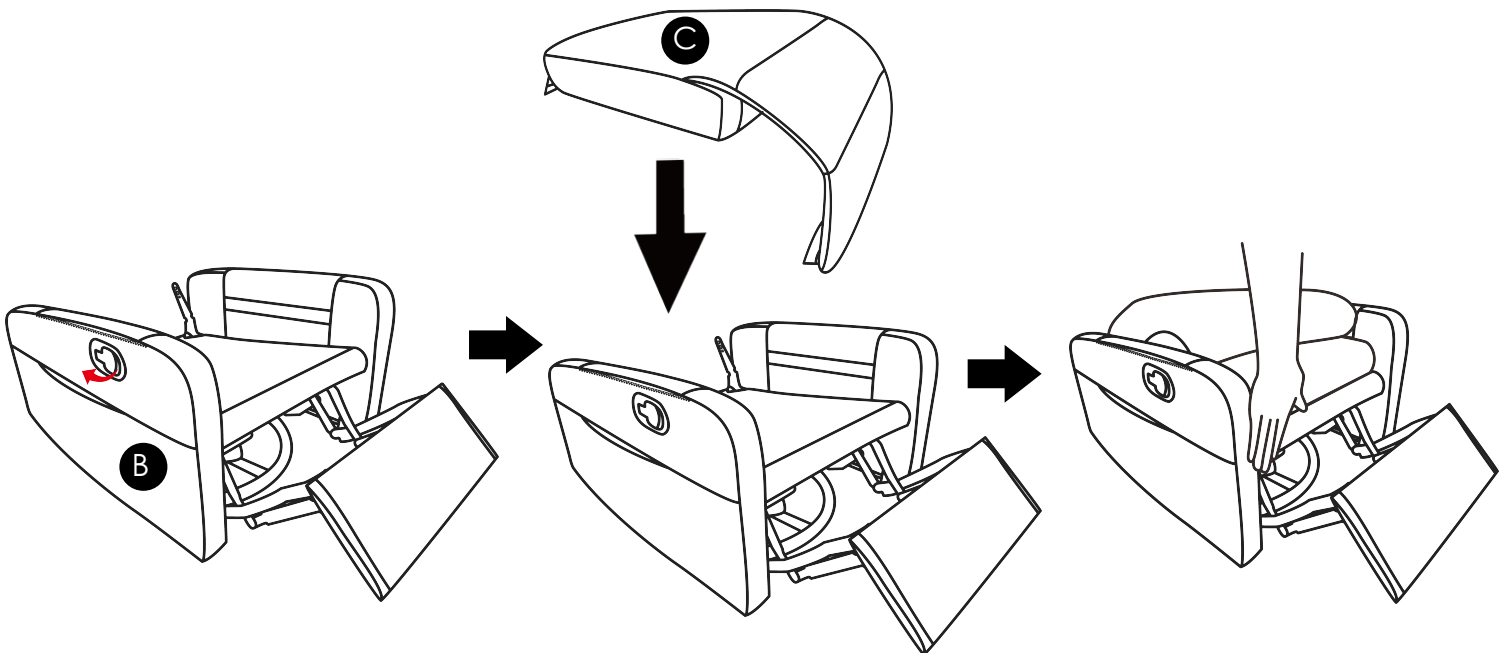
- 4 Place the Seat Cushion Core(D) into the Seat Cushion Cover (C), as shown below.



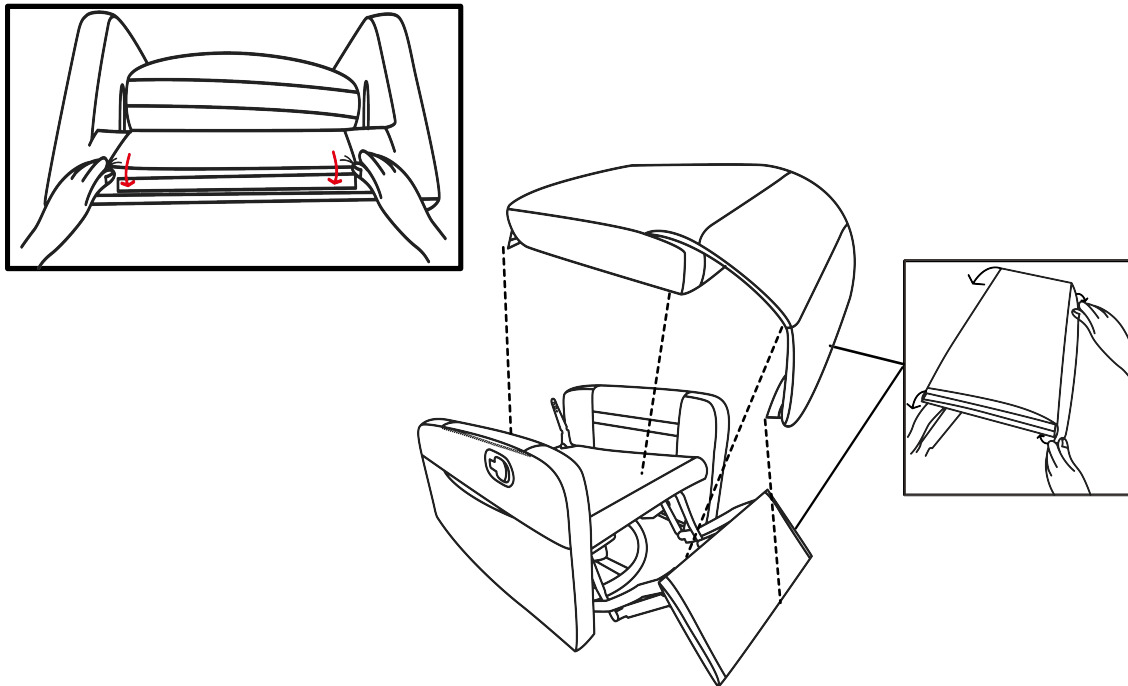
- 5** Finally, zip up Seat Cushion cover and Take off the protective strip from the Velcro hook side of the Seat Cushion Cover(C).



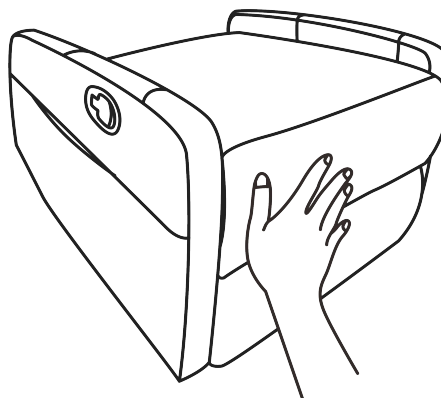
- 6** First, attach the Seat Cushion to the Chair Base(B), make sure the front edge of the Seat Cushion is flush with the Seat base, as shown in the image.



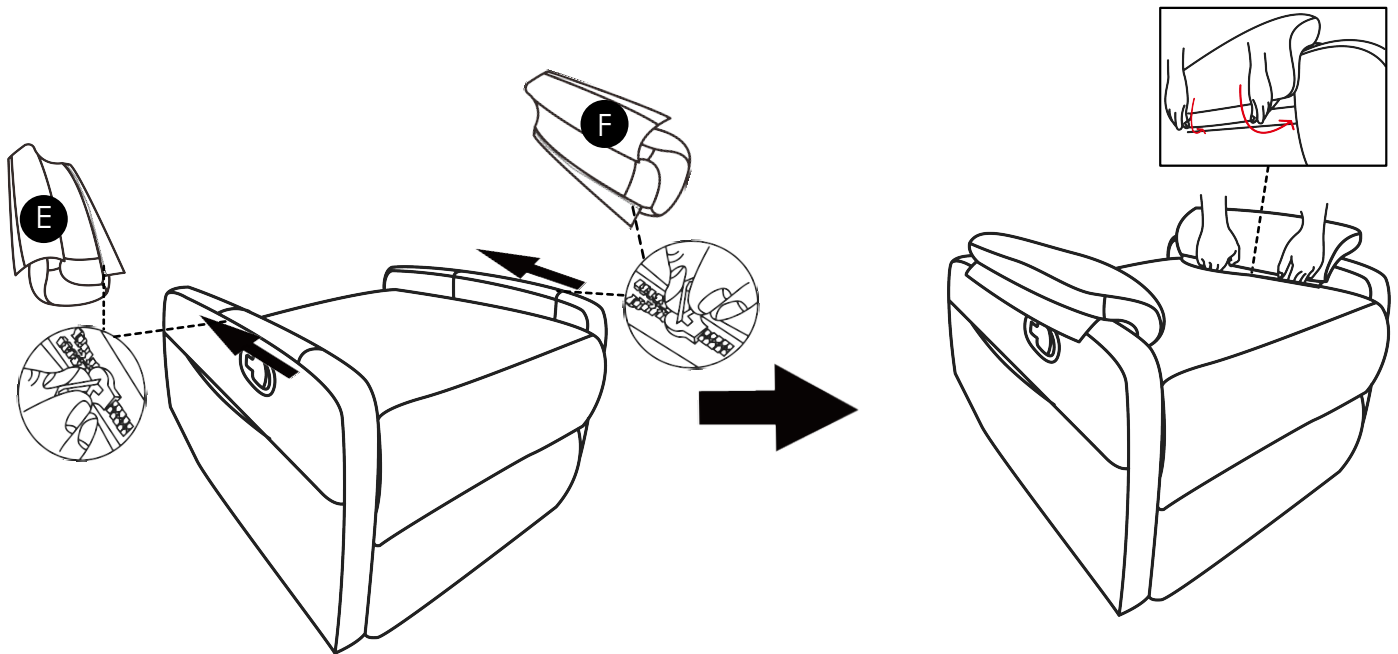
- 7** After attach the Seat Cushion to the Chair Base (B), it is recommended to install the Velcro on the footrest first. Before installation, the footrest needs to be folded back to 45-60°. Then install the Velcro on the back of the seat. The specific steps are as follows.



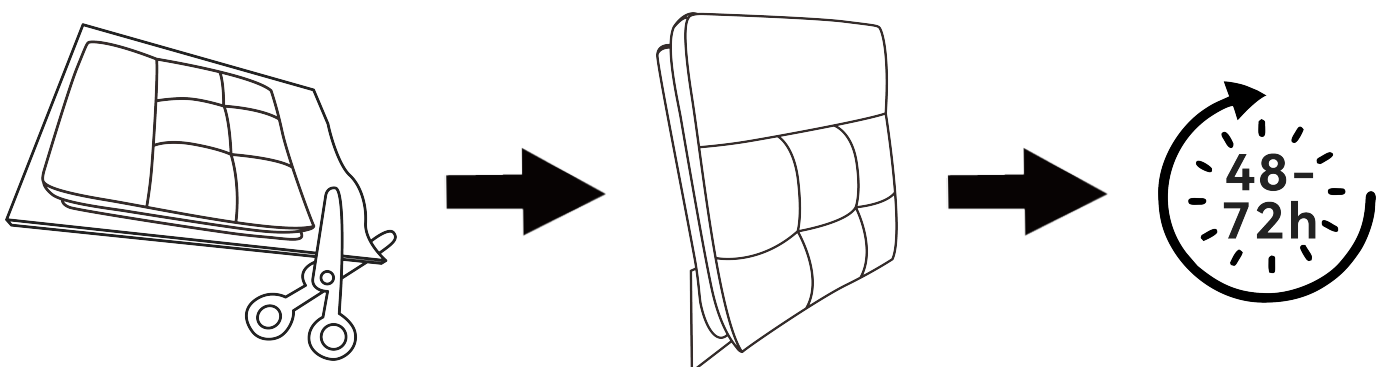
- 8** After installation, it is recommended to pat the Seat Cushion Core (C) to make the sofa fit better.



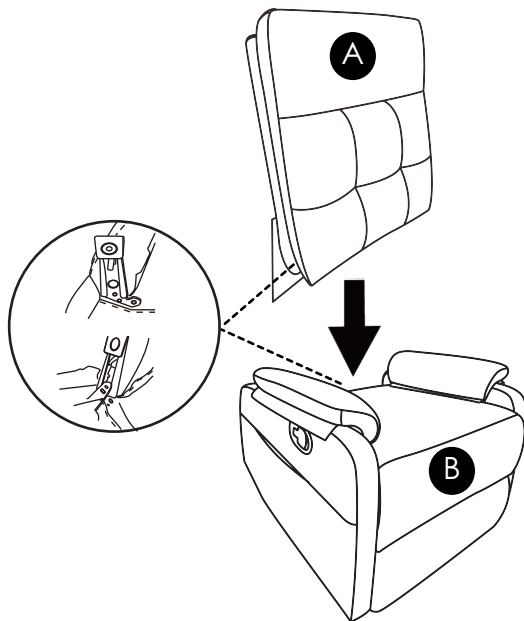
- 9** Attach the Armrest Cushion(E)&(F) to the Armrest by zipper and then fix the inside cushion to the armrest.



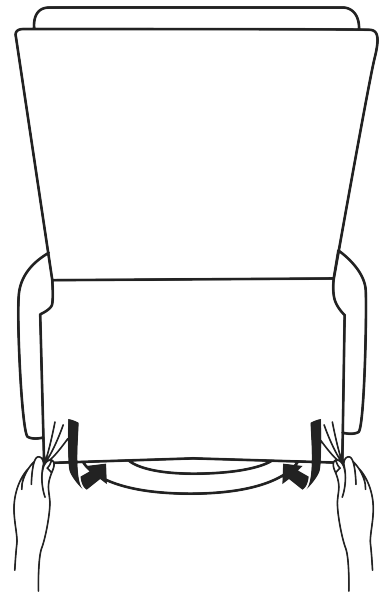
- 10** Open the sealed bag with scissors (be careful when using scissors). It may take 48-72hours for the Chair Back (A) to its fluffy state, please be patient.



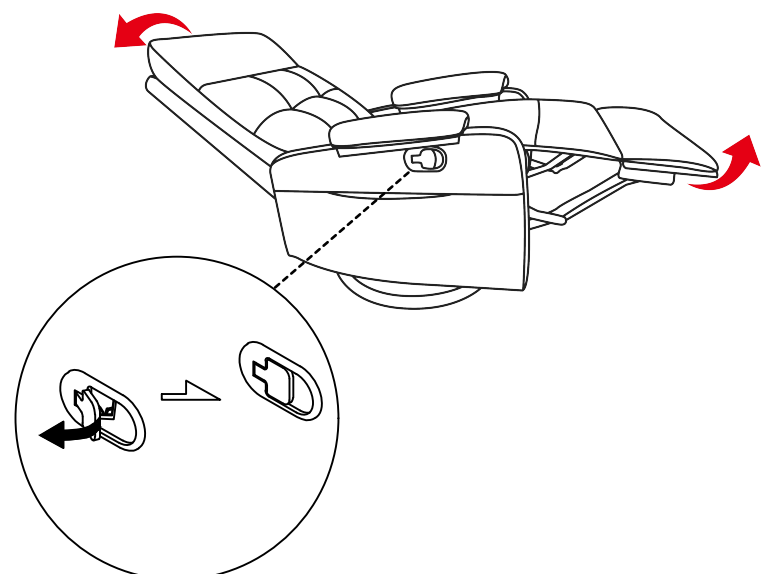
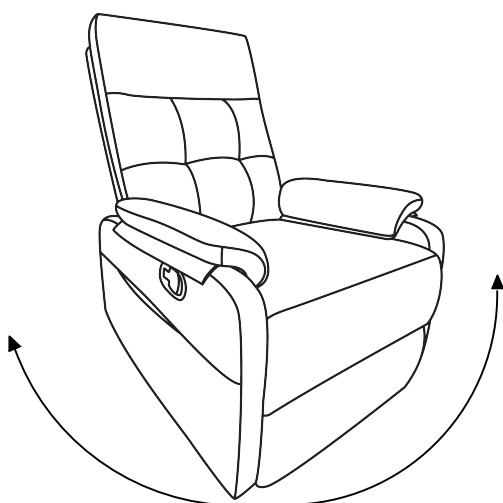
- 11** Align the hook-loop brackets and get the Chair Back (A) into the Chair Base (B). Gently push down until the back locks into position.



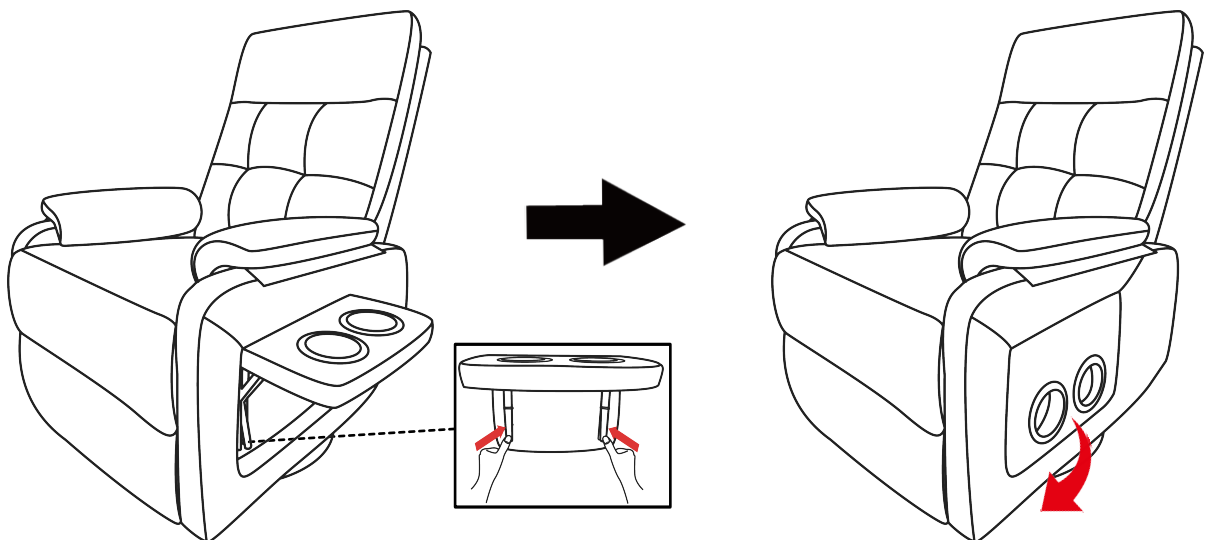
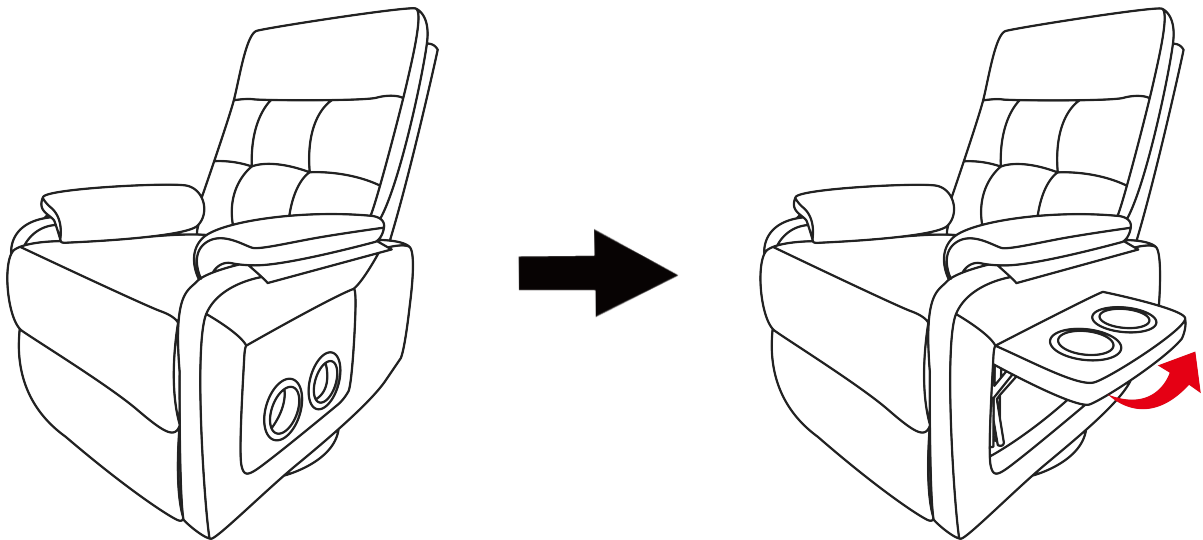
- 12** Attach the back cover to the bottom of the seat with Velcro.



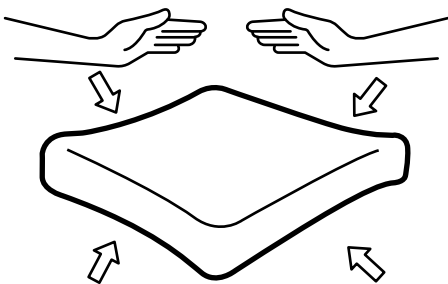
- 13** Assembly completed, It's ready to use.



- 14** To open the table: Pull to open, and a "click" sound will be heard once the table is securely in place. To close the table: As shown in the picture, press the two latches under the table before closing.

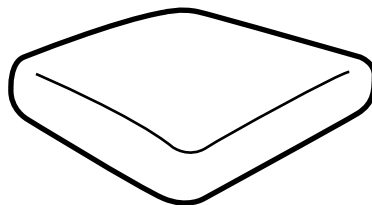


- 15** The Seat Cushion Core(D) and Chair Back (A) of this product are vacuum-packed for efficient shipping, which may result in a thinner appearance and fabric wrinkles upon arrival. To ensure optimal use, please follow below steps before using this item.



**01**

Due to package compression for better shipment, the fabric may have wrinkles, these wrinkles will gradually disappear.



**02**

Please be patient and wait for the Seat Cushion Core(D) and Chair Back (A) to return to its fluffy state, which may take 48 to 72 hours.



Wait for 48-72 hours

# Design Exquisite Furniture For Your Home

---

## PRODUCT WARRANTY

- 1-year limited on cover against splitting, peeling, and/or tearing.
- 1-year limited on internal and external frame structure.
- 1-year limited on cushioning material, seat springs and mechanism.

## Contact us:

We make all efforts to guarantee that the products you receive are in excellent condition. If there are any parts missing or damaged, the Customer Service Team will be happy to provide free replacements for you. We have professional warehouses where the current inventory of parts is enough so that they will arrive in your hands as fast as possible.

Assistance with assembly or product details is available; don't hesitate to get in touch with us to get priority service.

Our E-mail address: [CS.furniture@outlook.com](mailto:CS.furniture@outlook.com).



**[CS.furniture@outlook.com](mailto:CS.furniture@outlook.com)**