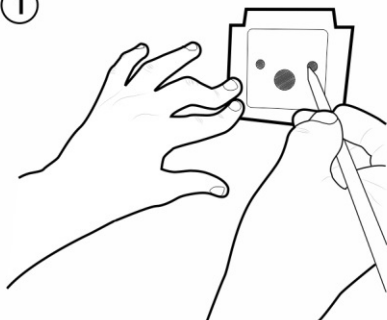
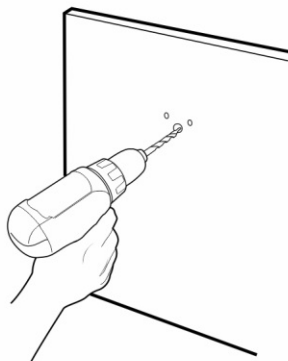


①



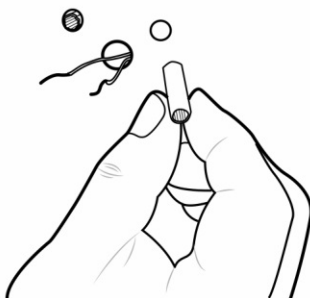
Turn off electrical power to existing doorbell.
Remove old doorbell button.
Use template provided to mark positions.

②



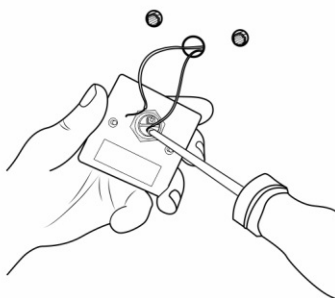
Drill holes using the appropriate drill bit for your surface material

③



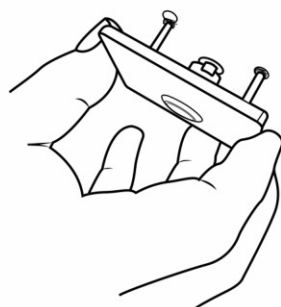
Insert plastic anchors into small holes

④



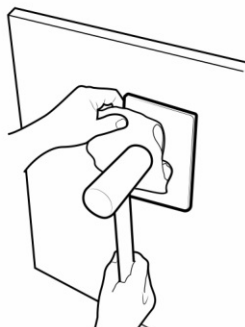
Attach wires to the 2 screw terminals on pushbutton

⑤



Push posts on back of doorbell into the plastic anchors

⑥



Using a soft cloth to protect the surface of the doorbell,
GENTLY tap the posts into the plastic anchors, alternating
sides, using a plastic or rubber mallet until doorbell is flat
against the mounting surface. DO NOT HIT THE CENTER
PUSHBUTTON WITH THE Mallet.

Installation Template

