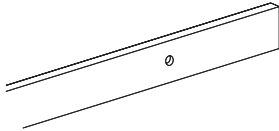


Barn Door Hardware Instructions

kit component

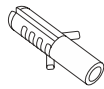
1

(x1) Track

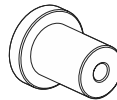


2

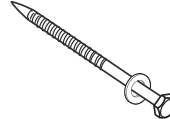
10*50mm Anchor
Just for concrete wall
(x5)



(x5) Wall spacer



(x5) 5/16 (8mm x 90mm)
Wall Screw



3

(x2) Anti-jump Block

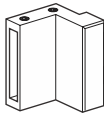
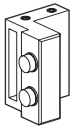


4

(x1) Right Stopper

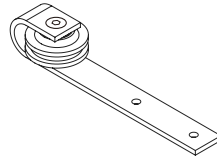
(x1) Left Stopper

Allen Key



5

(x2) Straight Strap



Bolts for 35-40mm door
M10x50(x4)



Washers
(x8)



Nut
(x4)

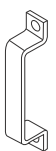


6

Nut
(x4)

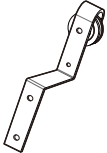


Door Handle
(x2)



7

(x2) Right Angle Roller



Anti-jump
Pads
(x2)



Bolts for 35-40mm door
M10x50(x4)



Washers
(x8)



Nut
(x4)



8

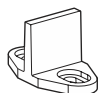
(x4) #8 (4.2mm x 25mm)
Floor Screws



1/4 (6mm) Floor
Anchor
(x4)

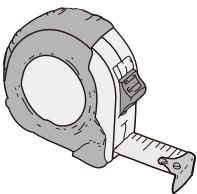


(x2) Internal Floor-
Mounted Door Guide



Tools Required

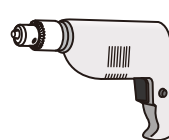
Tape Measure



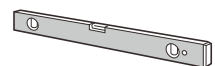
Wrench



Cordless Drill



Level



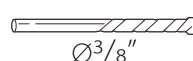
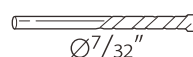
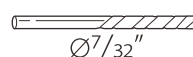
Pencil



Phillips Screwdriver



Drill Bit



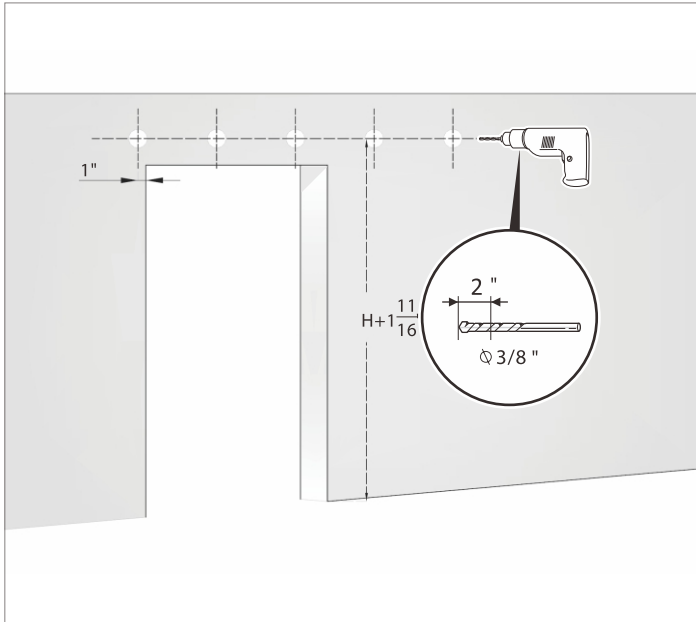
Step 1

Drill the marked holes with drill bits.

Notice: The hole sizes of the 2 walls are different.

CONCRETE Wall Preparation ①

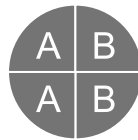
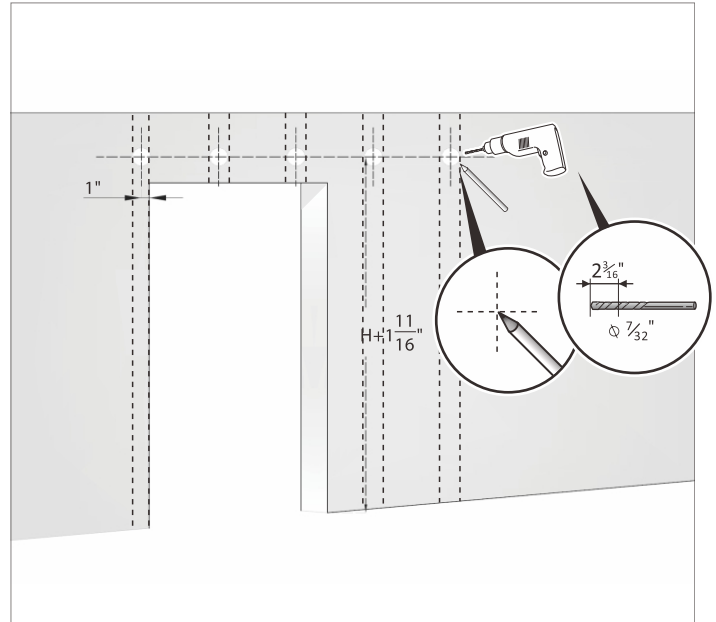
Use your guide marks to position the track in place, ensuring that it is level. Mark the mounting holes on the track using a pencil. Then, pre-drill $\frac{3}{8}$ " holes into the concrete according to your marks.



DRYWALL Wall Preparation ②

Drill the pilot holes directly with the drill bit which is smaller than $\frac{7}{32}$ "

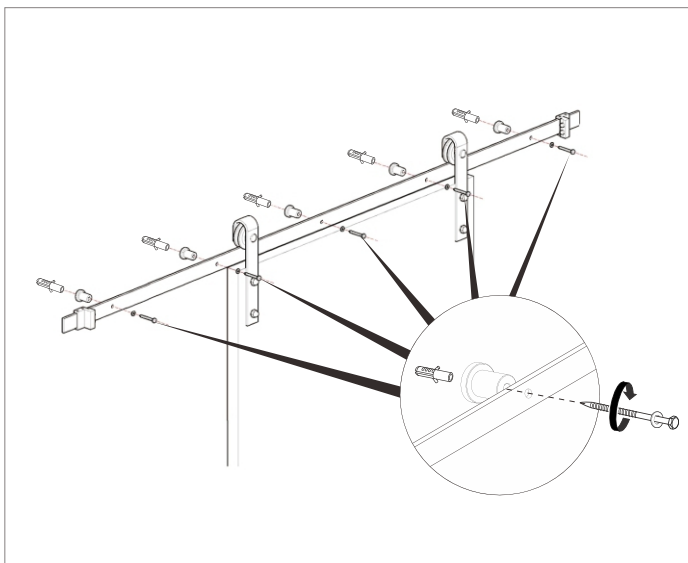
Note: Drill holes on the wooden frame inside the drywall. The distance between each pre-drilled hole is 16" and can be directly aligned with the wooden frame during drilling.



Step 2

CONCRETE Track Installation ①

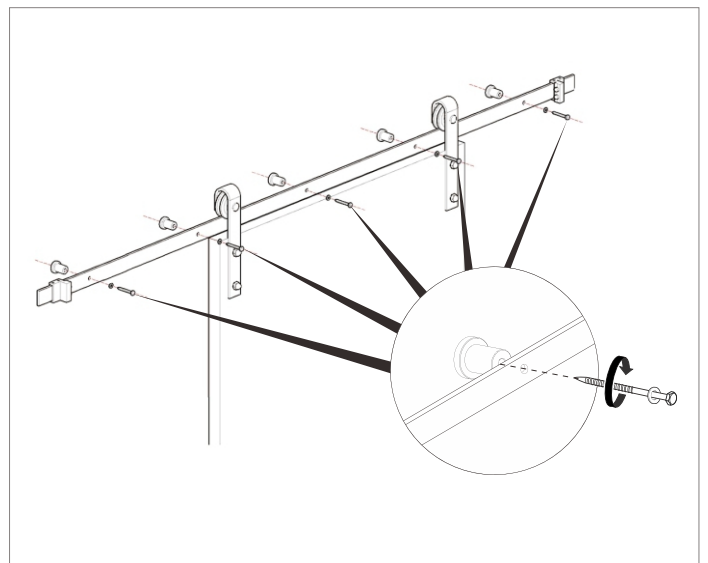
Install the anchor to holes on the concrete wall first, then insert lag bolt to wall spacer and anchor, and take care to install correctly, securing with a wrench.



DRYWALL Track Installation ②

When installing into the wall, insert using the provided wall screws. Align each spacer to the track holes, inserting spacers and screws (with washers), securing with a wrench.

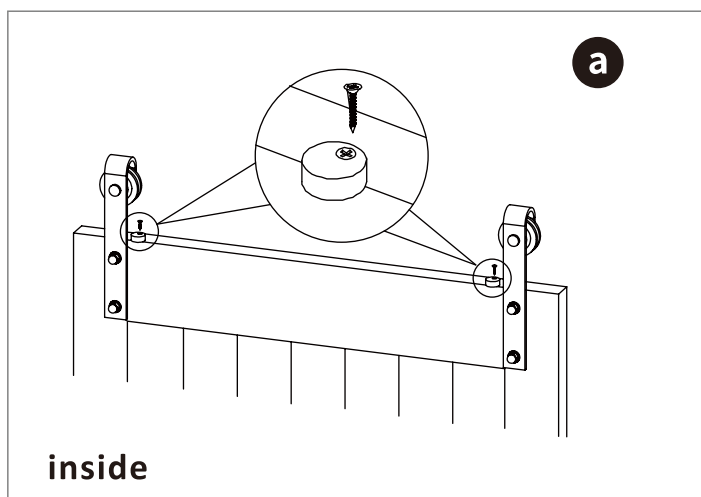
Note: It would be preferable to screw the screws into the wooden frame inside the drywall.



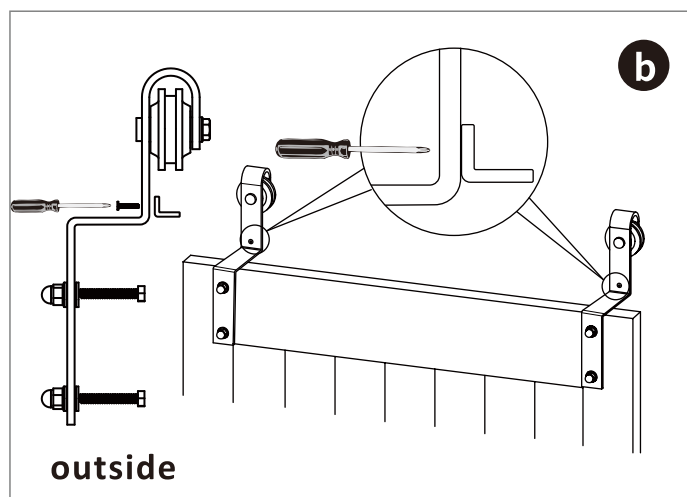
Step 3

Install anti-jump pad

a. The **inside** door should install the round anti-jump pads very close to the hanger as shown in the picture. The screw is near the front edge of your door (recommended : drill pilot hole to avoid splitting). Do not over tighten.



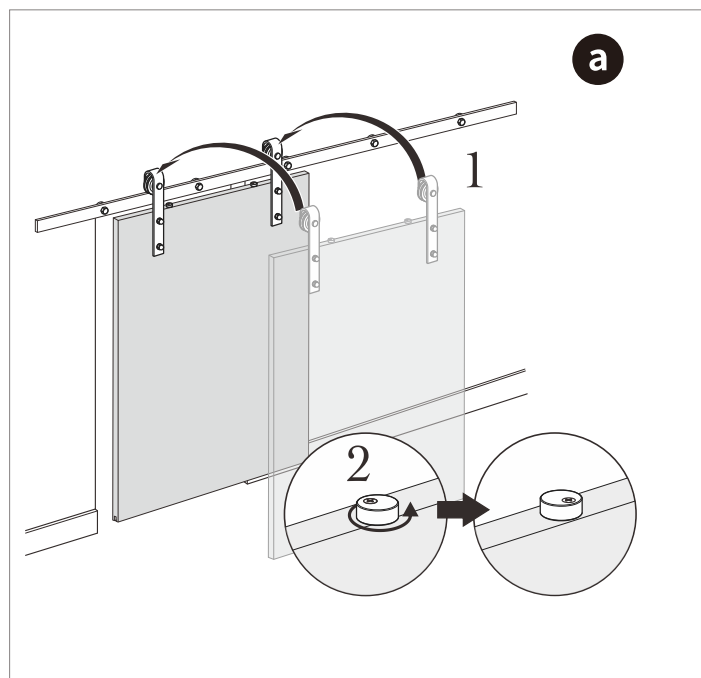
b. The **outside** door has the special anti-jump pads. you could install and adjust it with the tools. (Note: Anti-jump Pads need to be removed before hanging the door)



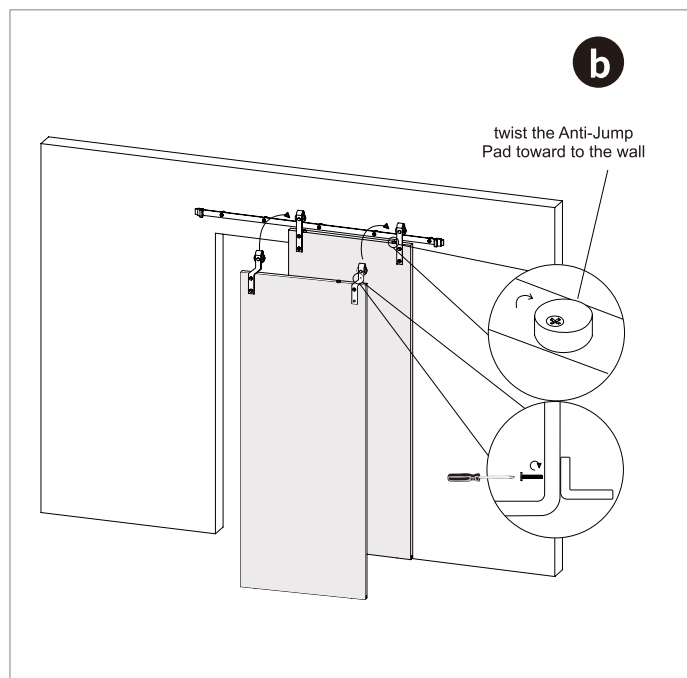
Step 4

Hanging the Door

a. Place the assembled door onto the secured track and rotate each anti-jump bumper so that it provides a buffer between the track and the door. Test for proper operation by sliding the door side-to-side.



b. Hang your Steel Hangers on the Track and then twist the Anti-Jump Pad toward the wall so that it is under the Track.

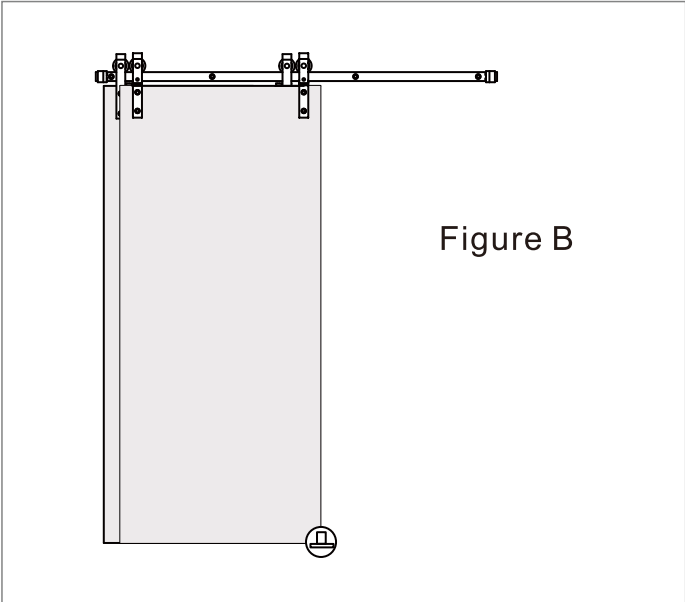
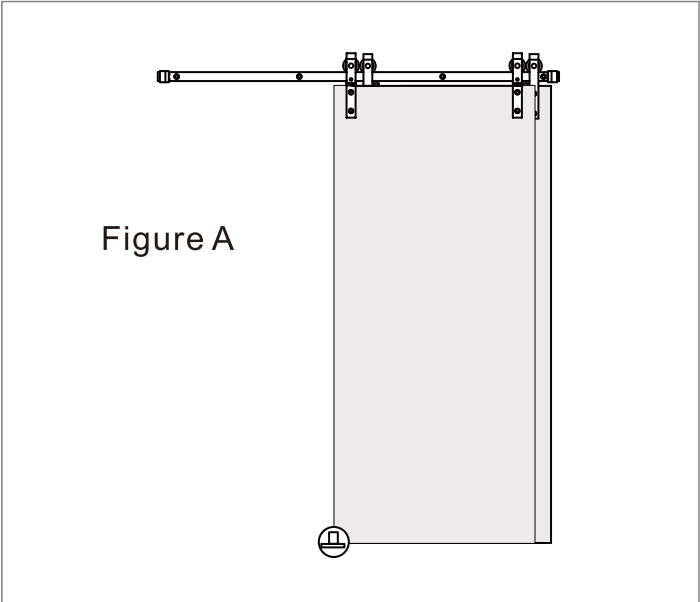


Step 5

Install the Floor Guide

Outside Door: Slide the door all the way to the far right and nstall the floor guide of theoutside door.as shown in Figure A.

Inside Door : Slide all the doors to the far left and install the floor guide of the inside door, as shown in Figure B.



Step 6



Adjust the Door Stopper

Adjust the stopper, the installation is over.

