

abode

Abode Garment Steamer



**Model Number:
AGS3001/T**

For Customer Services & Spare Parts please call **0345 209 7461**

**PLEASE RETAIN FOR FUTURE
REFERENCE**

CONTENTS

	Page(s)
Safety Instructions	3-5
About Your Garment Steamer	6
Using Your Garment Steamer	7-10
Maintaining Your Garment Steamer	11
Problem Solving	11
Product Information	12
Guarantee and Customer Service	13
Connection to the Mains	14
Notes	15

SAFETY INSTRUCTIONS

READ CAREFULLY BEFORE USE AND KEEP FOR FUTURE REFERENCE

- This unit is designed mainly for garment steaming, with an additional cleaning function
- Please only use this garment steamer for its intended use only
- When there is no water in the tank, the temperature will be maintained by an electric current
- The unit is fitted with a thermostatic cut off and will cease power supply if the temperature rises above the safety level
- This appliance is not intended for use by persons (including children) with reduced physical, sensory or mental capabilities, or lack of experience and knowledge, unless they have been given supervision or instruction concerning use of the appliance by a person responsible for their safety
- Young children should be supervised to ensure that they do not play with the appliance
- Before using this machine, fully unwind the power cord
- Do not power through a multi plug extension cord

SAFETY INSTRUCTIONS

READ CAREFULLY BEFORE USE AND KEEP FOR FUTURE REFERENCE

- Before using this machine, add water
- Do not exceed the maximum fill level
- Do not add detergent or other liquid to the water tank
- Do not let the iron plate come into contact with people, animals, household appliances or other equipment
- Turn off the power switch when not in use
- Do not touch the steam outlet during operation
- Use a soft, dry cloth and a nonabrasive detergent to clean the surface
- Do not use solvents such as gasoline, alcohol, banana oil, etc.
- Do not immerse the machine, power cord or plug in water or any other solution
- Keep out of harsh environments (such as moisture, strong sunlight or corrosive gases, etc.) for prolonged periods of time

SAFETY INSTRUCTIONS

READ CAREFULLY BEFORE USE AND KEEP FOR FUTURE REFERENCE

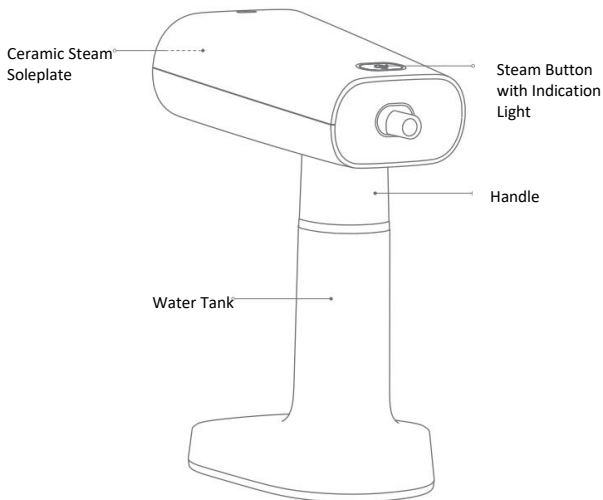
- Keep the machine away from flammable or explosive objects
- If any damage is incurred to the machine, stop use
- Do not attempt to repair the machine yourself, please contact customer services
- This appliance is intended for indoor use only
- When in use, please pay attention to the danger of steam

FOR HOUSEHOLD USE ONLY

**DO NOT THROW AWAY
INSTRUCTIONS**

ABOUT YOUR GARMENT STEAMER

PARTS



Fabric Brush



Storage Bag



Measuring Jug

USING YOUR GARMENT STEAMER

- Before first use, remove all packaging materials and stickers or labels

Operating Instructions

1. Filling the tank with water

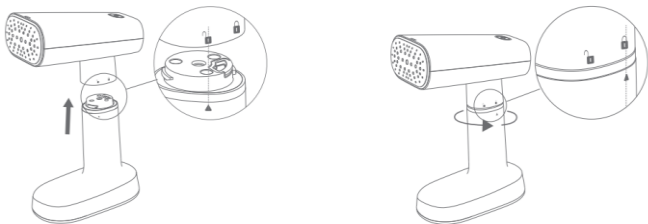
- Make sure power cord is unplugged
- Remove rubber cap from the top of the water tank and fill with water using the jug provided
- Follow the advised Max and Min lines on water tank and do not underfill or overfill



USING YOUR GARMENT STEAMER

1. Filling the tank with water

- Once the tank is full, replace the rubber cap
- Lock the body into the tank by aligning the unlocked symbol with the arrow and rotating the tank handle clockwise 50° to align the arrow with the locked symbol



- To release the tank, follow the above in reverse

2. Fabric Steaming

CAUTION: When steaming any material for the first time, it is recommended that you test a small inconspicuous area first

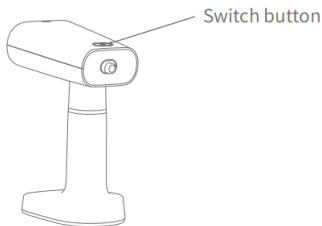
Do not use on synthetic fabrics such as 100% nylon or polyester, or other steam-sensitive materials

USING YOUR GARMENT STEAMER

2. Fabric Steaming

CAUTION: Hang the garment in an area that will not be affected or damaged by heat and steam, such as on a shower curtain rail, or in an open doorway. Steaming against surfaces such as a laminated door could cause damage

- Plug power cord into a standard grounded electrical outlet
- The power indicator will flash whilst the unit is preheating and after approximately 45 seconds the power indicator light will turn from flashing to constant
- When the light is constant the unit is ready to use
- Direct the steam nozzle towards the fabric you wish to steam
- To release continuous steam, press the steam button



USING YOUR GARMENT STEAMER

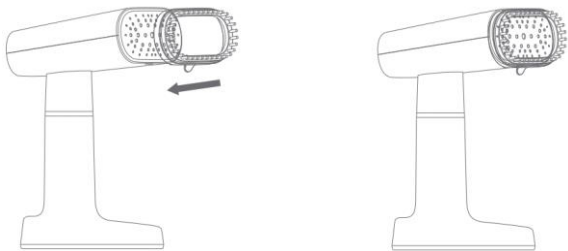
Note: When in use, the sound will be relatively loud. This normal. A small number of white particles may be omitted during first use, this is normal

CAUTION: Always be sure that the steam nozzle is pointed in a safe direction (away from yourself and other people, pets and plants) when steaming.

When you finish using your handheld garment steamer, immediately unplug the power cord from the electrical outlet.

3. Using the fabric brush

- The fabric brush accessory removes lint from garments while steaming
- To attach the fabric brush, hold the handle of the steamer and then click the brush into the steam nozzle. You will hear a clicking sound when securely in place



MAINTAINING YOUR GARMENT STEAMER

- **1. Storage**
- Unplug the power cord
- Allow unit time to cool (at least 30 minutes)
- Remove the water tank and drain out any remaining water
- Store in a cool, dry place

- **2. Product Maintenance**
- Always ensure that the steam outlet is clean, dirt free and not blocked
- Long term use can cause a build up of dirt. A clean towel can be dipped in water and white vinegar to clean (mixed to a 1:1 ratio)

PROBLEM	POSSIBLE CAUSE	SOLUTION
Unit fails to heat up.	Unit is not plugged in	Plug power cord into electrical outlet
Power Indicator Light DOES NOT illuminate	The Power Switch is not on	Make sure the Power Switch is on
	Household circuit breaker has tripped or blown a fuse	Reset circuit breaker or replace fuse. For assistance, contact a licensed electrician
	Unit is damaged or otherwise in need of repair	Immediately cease usage and unplug. Contact customer services for assistance
Unit heats up but fails to steam. Power Indicator Light DOES illuminate	The water tank is empty	Refer to Filling Water Tank procedure
	Unit is still heating up	Ensure enough time has been allowed for the unit to preheat, and that the light is constant
Steam output is weak or intermittent	The Water Tank has been over filled	Check that the water level does not surpass the Max Fill Line of the Water Tank
Unit is creating a loud hum or pumping sound	Not enough water is in the Water Tank.	Check the water level. Water level should be between the Min and Max Fill Line marked on the Water Tank

PRODUCT INFORMATION

The Technical Parameters

Product Name	Handheld Garment Steamer
Rated Power	1000 W
Voltage	220V-240V
Frequency	50/60 HZ
Tank Capacity	300ml

GUARANTEE & CUSTOMER SERVICES

At Abode, we take all our customer feedback seriously.

Feel free to contact our Customer Service Team on

0345 209 7461

who will be more than happy to assist you.

This product is guaranteed for **12 months** from the date of the original purchase. If any defect arises due to faulty materials or workmanship, the faulty product must be returned to the place of purchase.

Refund or replacement is at the discretion of the retailer.

The following conditions apply:

- The product must be returned to the retailer with the original proof of purchase.
- The product must be installed and used in accordance with the instructions contained in this instruction guide and any other instructions for use which are supplied.
- It must be used for domestic purposes only and for its intended use.
- This warranty does not cover wear and tear, damage, misuse or consumable parts.

CONNECTION TO THE MAINS SUPPLY

WARNING- THIS APPLIANCE MUST BE EARTHED

This appliance is designed to operate from a mains supply of
220-240V~ 50Hz.

Check that the voltage marked on the product corresponds with
your supply voltage.

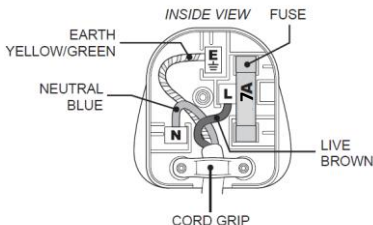
This product is fitted with a 7A plug complying with BS1363.
If this plug is unsuitable or needs to be replaced, refer to customer
services.

Important: The wires in the mains lead are coloured in
accordance with the following code:

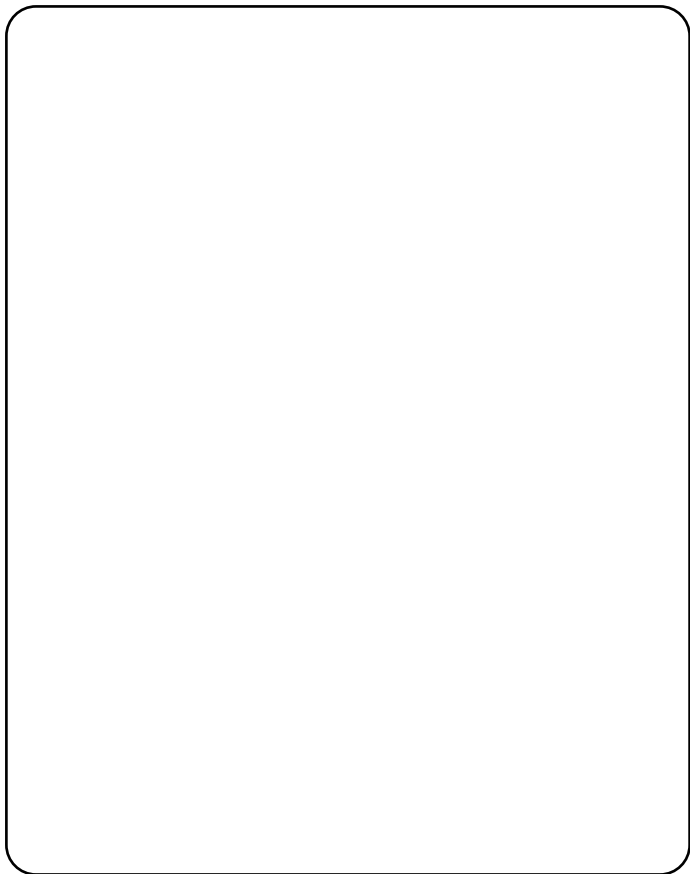
GREEN/YELLOW – EARTH

BLUE - NEUTRAL

BROWN – LIVE



NOTES



abode

Made by Product Care Trading Limited

Product Care Trading Limited, Wigan, WN2 4AY/ PCT (NI) Ltd, Belfast, BT5
5AD

Abode Support: call **0345 209 7461**

**UK
CA**



The 'wheelee bin' symbol is known as the 'Crossed-out wheelee bin Symbol'.

When this symbol is marked on a product/batteries, it means that the product/batteries should not be disposed of with your general household waste. Only discard electrical/electronic/battery items in separate collection schemes, which cater for the recovery and recycling of materials contained within. Your co-operation is vital to ensure the success of these schemes and for the protection of the environment. For your nearest disposal facility, visit www.recycle-more.co.uk or ask in store for details.

SEDEX – Connecting businesses and their global suppliers to share ethical data and enabling improvement in ethical performance. Visit www.sedex.org.uk for further information.

We reserve the right, due to possible changes to design, to alter the instruction manual without prior notice.

Revision 1.7