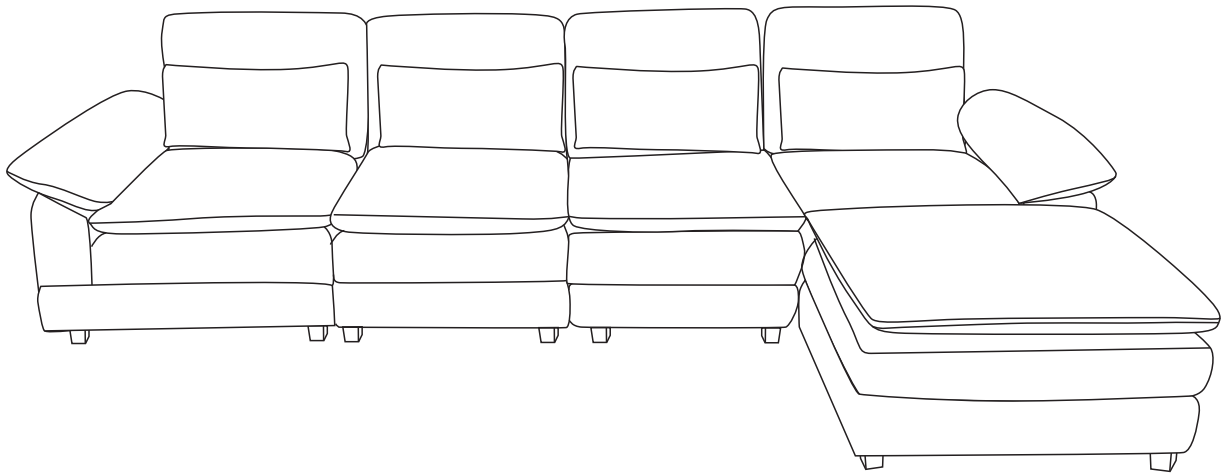


ASSEMBLY INSTRUCTION

Friendly Reminder:

- 1.This sofa is packed in 3 boxes. Please assemble it After all boxes are received.
- 2.As the cushions are all vacuum compressed,there will be some wrinkles. Please give your cushions up to 72 hours to reach its original size and the wrinkles will basically disappear.
- 3.Please do not open the compressed packags until your sofa frame is completely assembled.

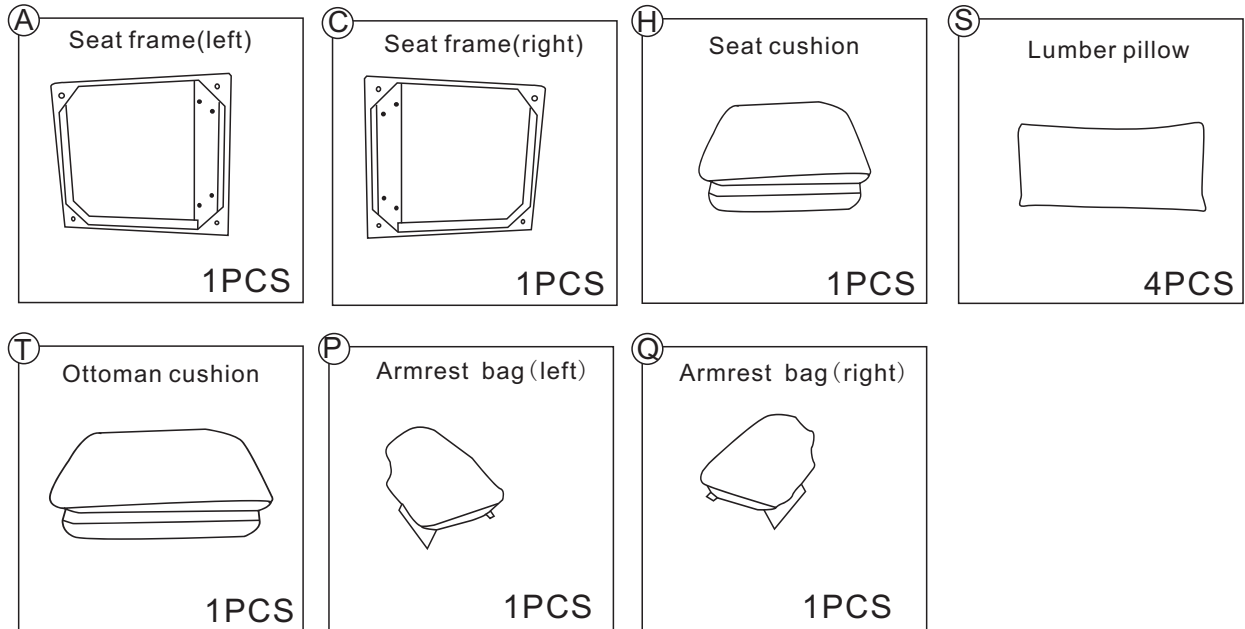


Return & Warranty policy:

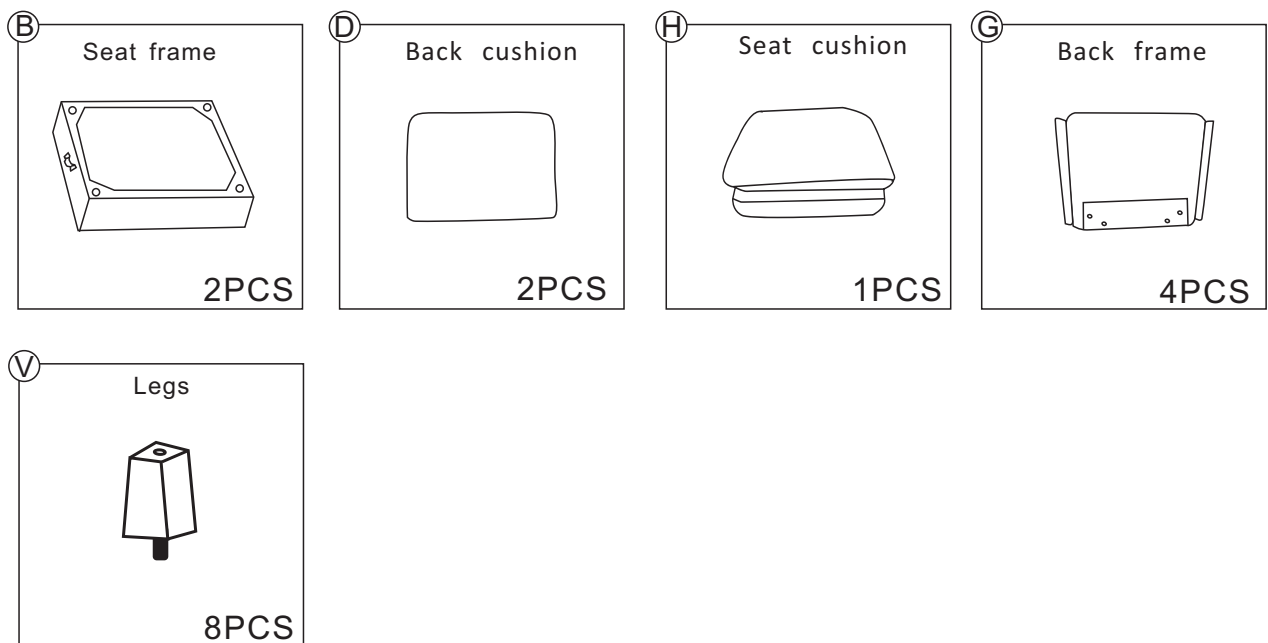
- We strive to offer the highest quality products,and we also try our best to satisfy each and every customer that orders from us with replacement parts or service as needed.
- If the item is damaged or defective, please take photos as evidence for replacements and refunds.
- Please do not return to store,contact the seller if you have any troubles with this product.

COMPONENTS

BOX 1

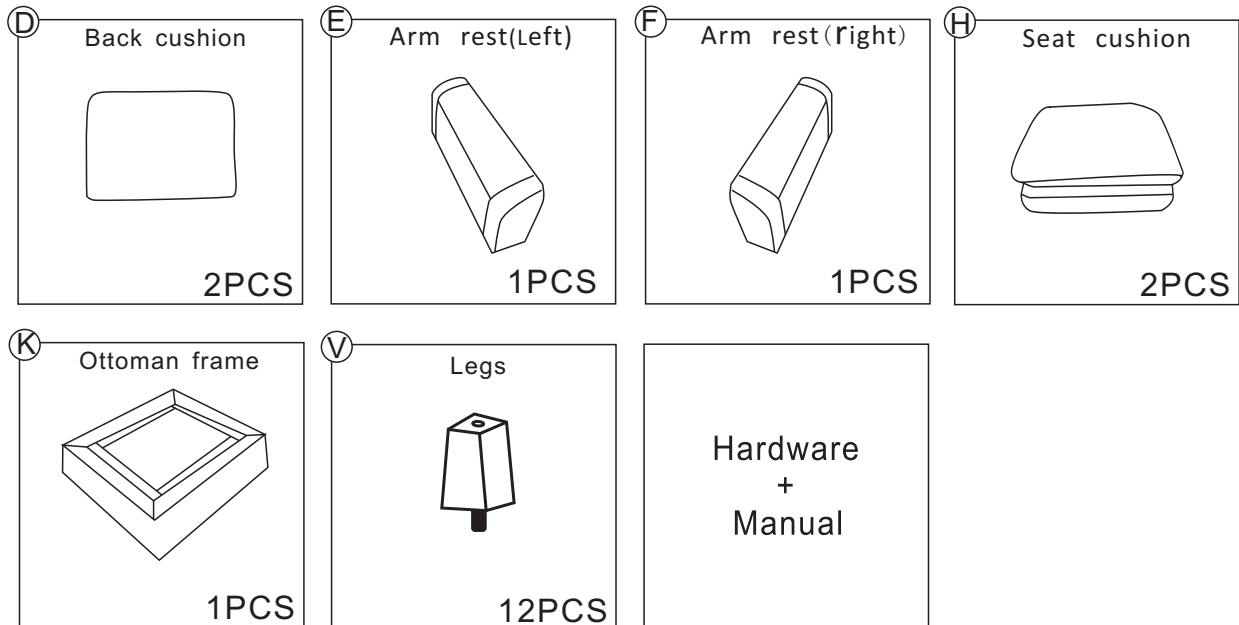


BOX 2

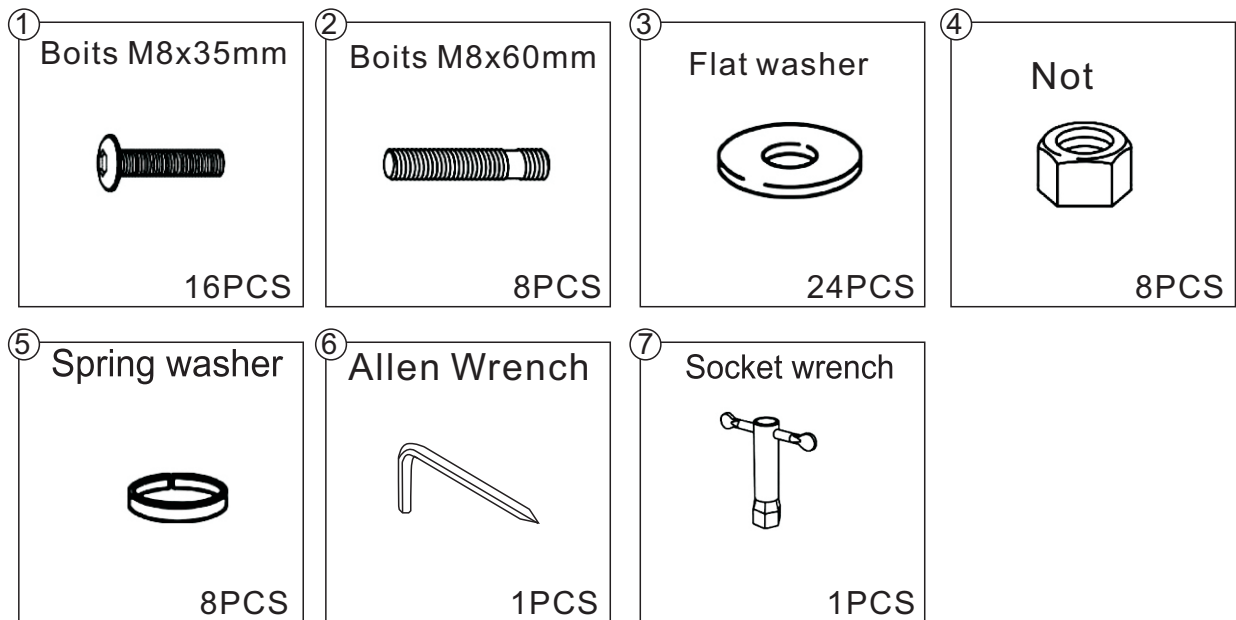


COMPONENTS

BOX3




Hardware Package



NOTE: Take out of all parts from 3 boxes, make sure all parts you have received before assembled.

DIAGRAM1 (Assemble the Armrest(Part(E&F))

Screw the Bolts (Parts2) into the screw holes on the bottoms of the Armrest(Part E&F), Tighten the Bolts with the Wrench(Part 6) as shown.

2	 M8X60	8PCS
6		1PCS

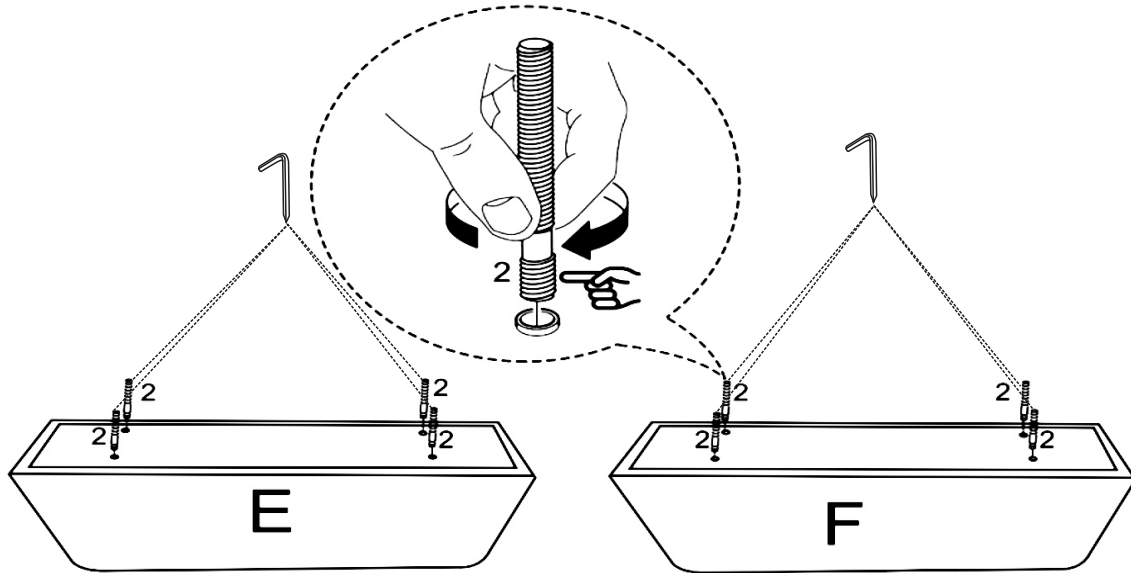






DIAGRAM2(Assemble the Armrest to the Seat frame (right)
Connect the Armrest(right) (Part F) to the Seat frame(right) (Part C) with the Bolts M8X60mm (Part2) ,the Flat washer (Part3), the nut(Part4) and the Spring washer(Parts 5) by Socket wrench (Part 7).

3		4PCS
4		4PCS
5		4PCS
7		1PC

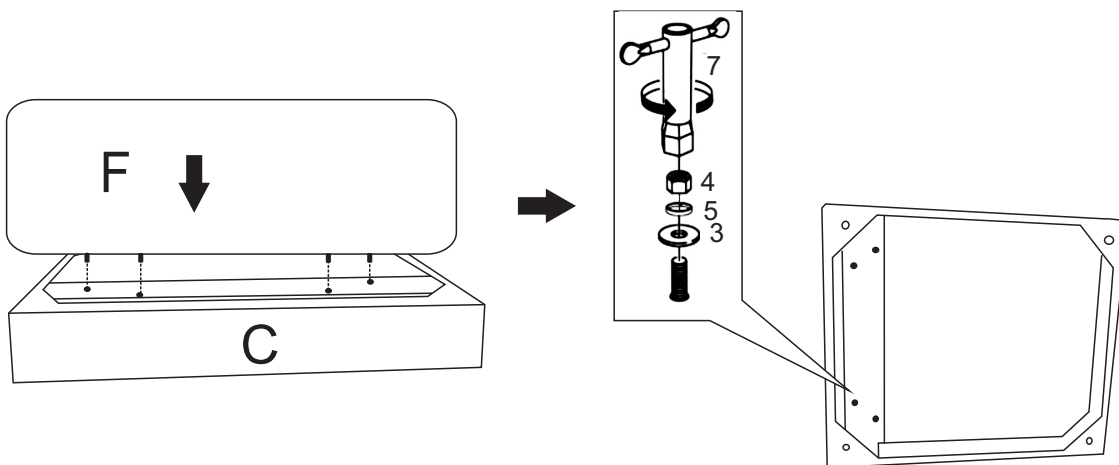






DIAGRAM 3 (Assemble the Armrest to the Seat frame (left)
 Connect the Armrest(left) (Part E) to the Seat frame(left)
 (Part A) with the Bolts M8X60mm (Part2) ,the Flat washer
 (Part3), the nut(Part4) and the Spring washer(Parts 5) by
 Socket wrench (Part 7).

3		4PCS
4		4PCS
5		4PCS
7		1PC

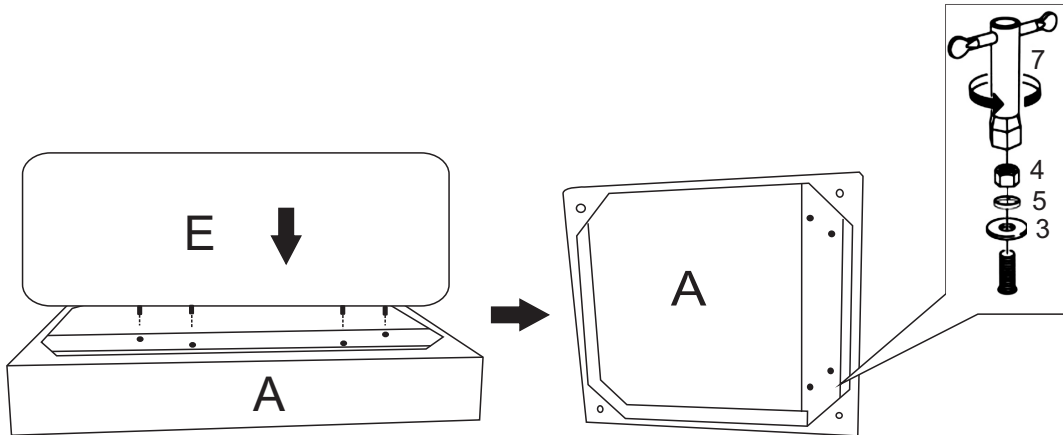

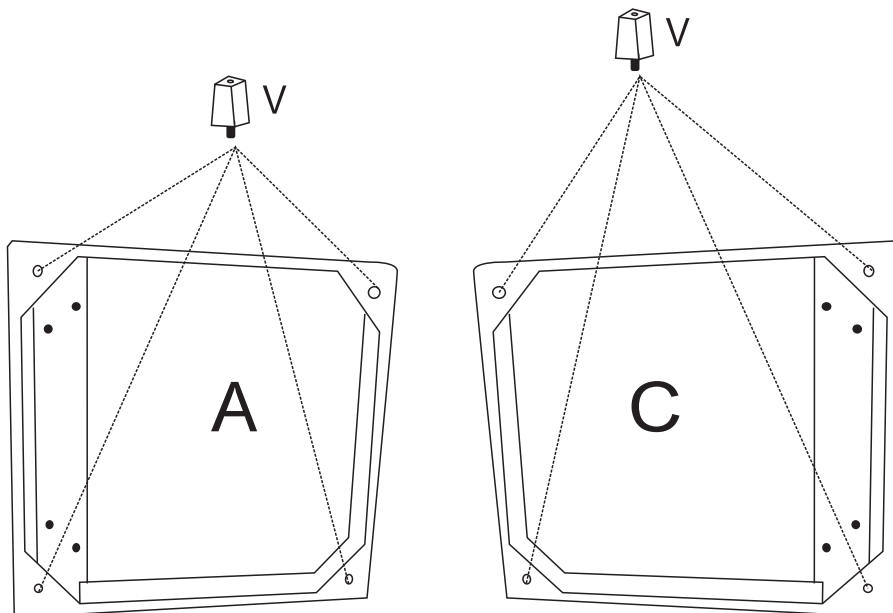


DIAGRAM 4 (Assemble the Legs)
 Tighten 8 Legs (Part V) to the seat frames(Parts A&C) as shown.

V		12PCS
---	---	-------




V		12PCS
---	---	-------

DIAGRAM 5 (Assemble the Legs)

Tighten 12 Legs (Part V) to the seat frame(Parts B) and Ottoman frame(Part K) as shown.

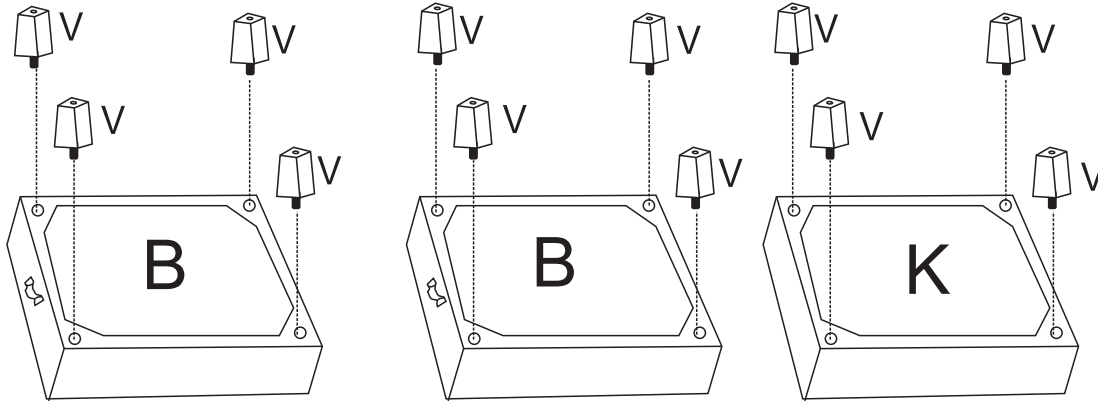





DIAGRAM 6 (Assemble the Back frame)

Connect the Back frames(Part G) using (16) M8x35mm Bolts (Part 1) and(16) Flat washer (Part3) by Wrench(Part6) as shown.Please install the top Bolts first, then the bottom Bolts. Fasten the bolts and then stick on the Velcro as shown.

Make sure all the Bolts are in the holes before tightening all the Bolts.

1		16PCS
3		16PCS
6		1PC

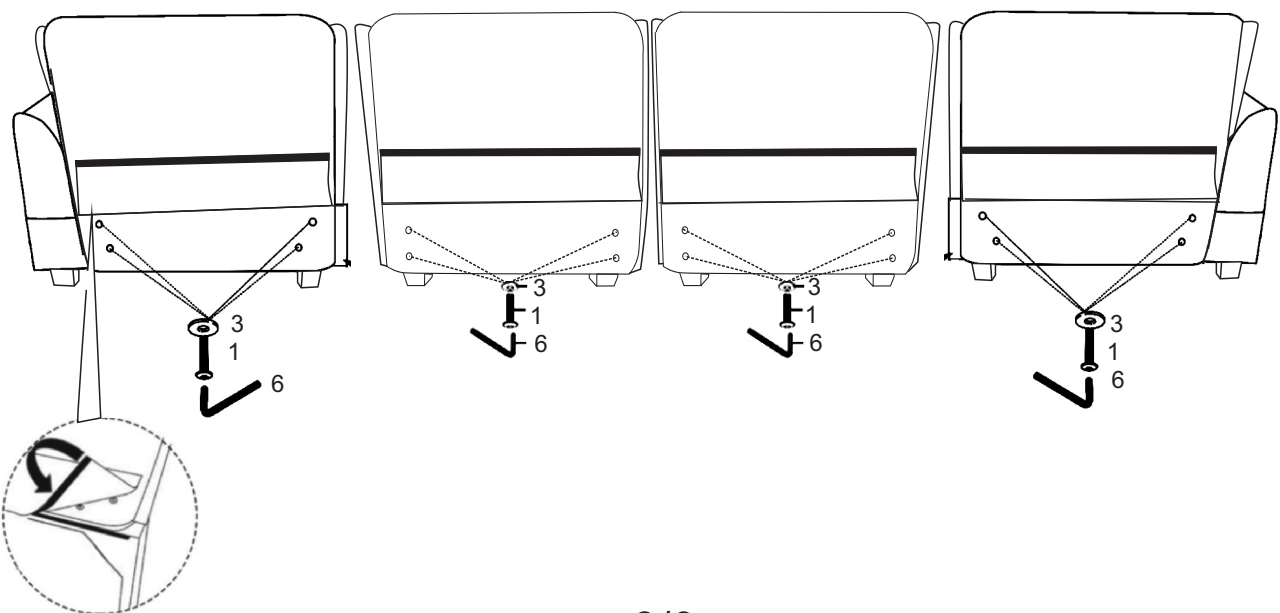


DIAGRAM 7 (Connecting the Seat frame)
 Connect the Seat frames(Parts A&B&C) as shown.

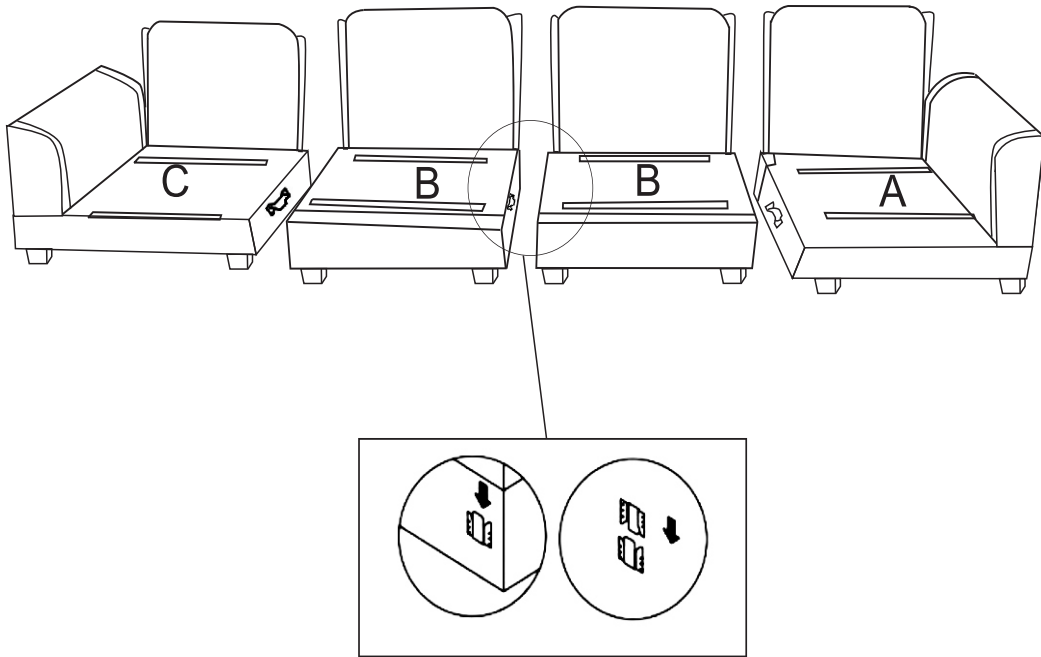
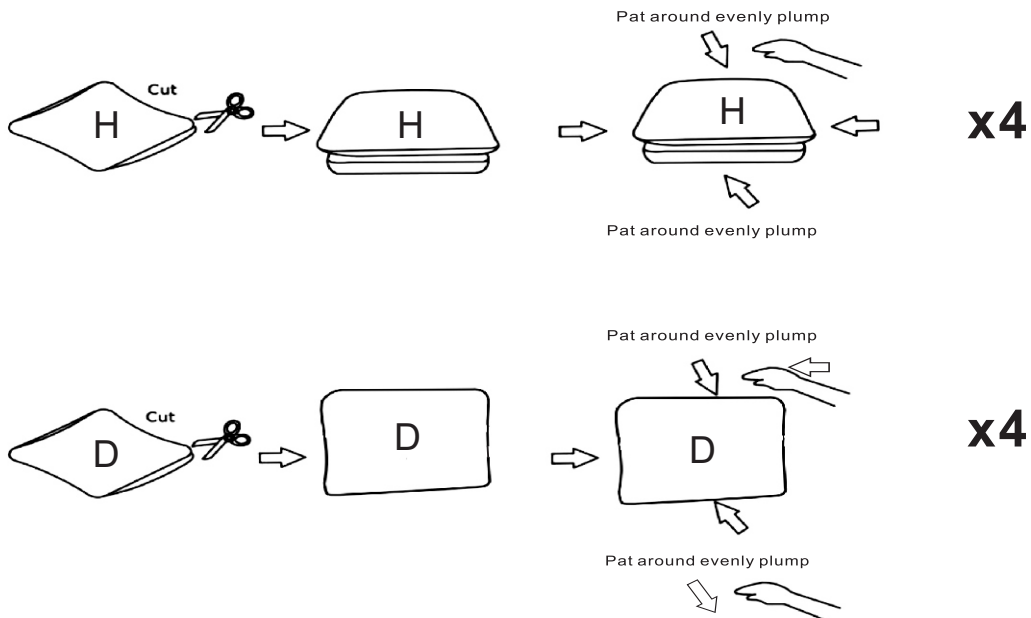


DIAGRAM 8



TIPS

1. Please do not open the compressed packages until your sofa frame is completely assembled.
2. Compressed back cushions and pillows need to be fully fulfilled within 72 hours for your perfect use.
3. Please keep children away from plastic bags or any small pieces of stuff.

DIAGRAM 9 (Connecting the Armrest bags)

Insert Armrest bag(left)(Part P) into the Armrest(left)(Parts E) and Insert Armrest bag(right) (Parts Q) into Armrest(right)(Parts F) as shown.

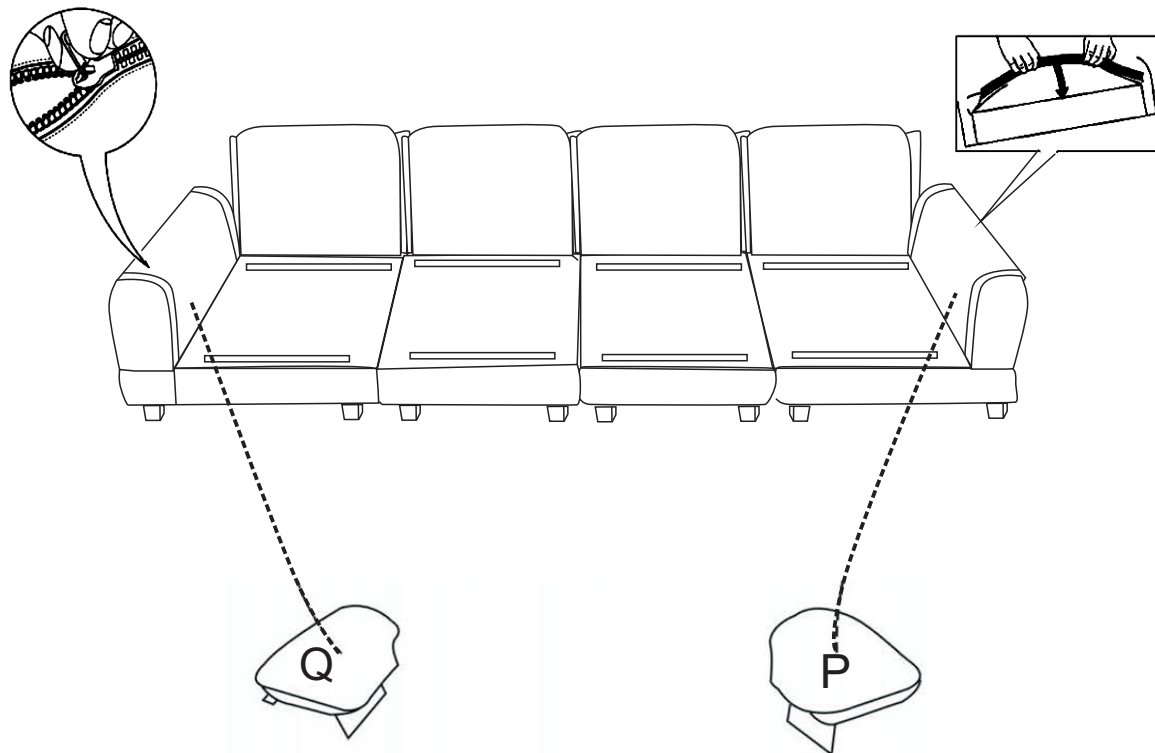


DIAGRAM 10 (Place the ,Seat cushion on the sofa)

Tear off the Velcro protective cloth, then put the Seat cushions(Part H)on the sofa. Recheck all the bolts before you sit on the sofa.

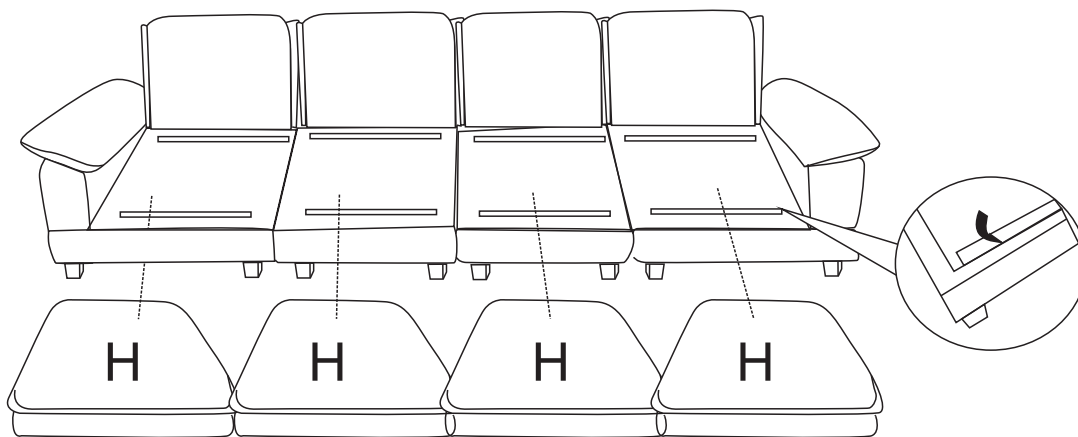
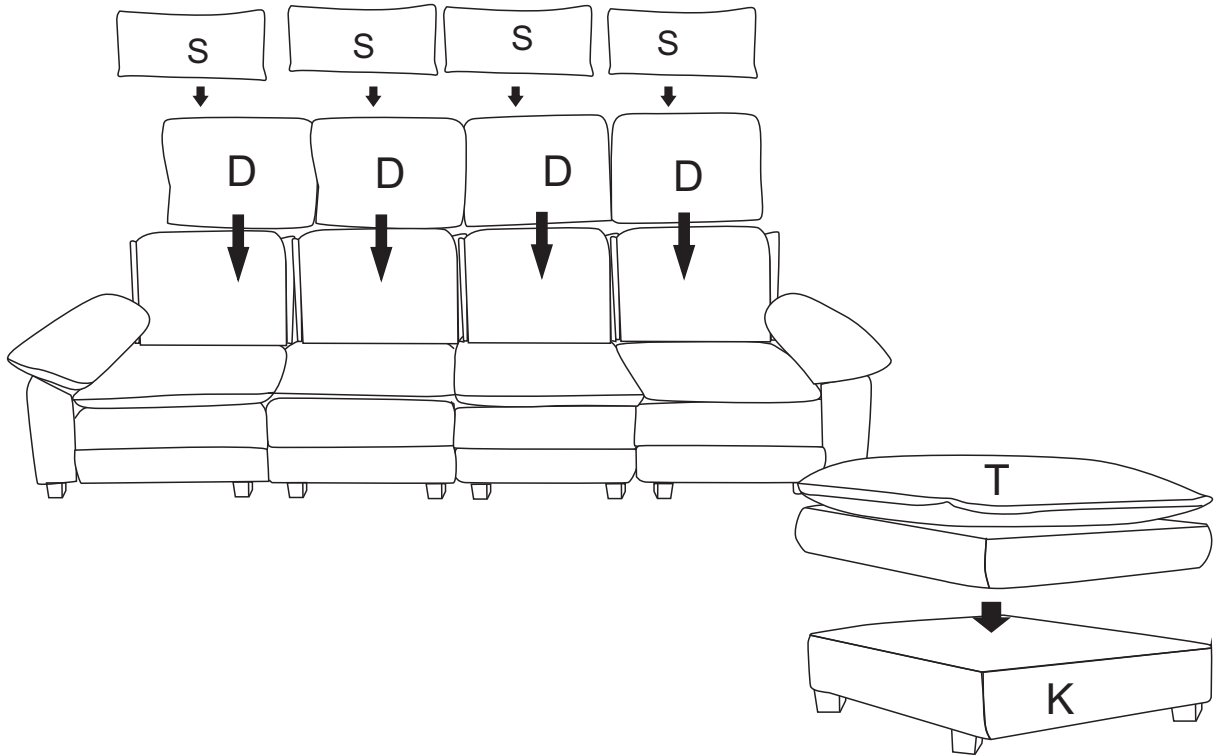


DIAGRAM 11 (Place the Cushions ,Throw pillows on the sofa)
Put the Back cushions (Parts D) the Throw pillows(Part S) on the sofa. Then put
The Ottoman cushion(Part T) on the Ottoman frame(Part K).



COMPLETE!

