



BAYSQUIRREL

Ceiling Fan With Light



User Manual

***Read this manual before using the product,
and keep it for future reference.**

Activate 1 year non-human damage replacement service



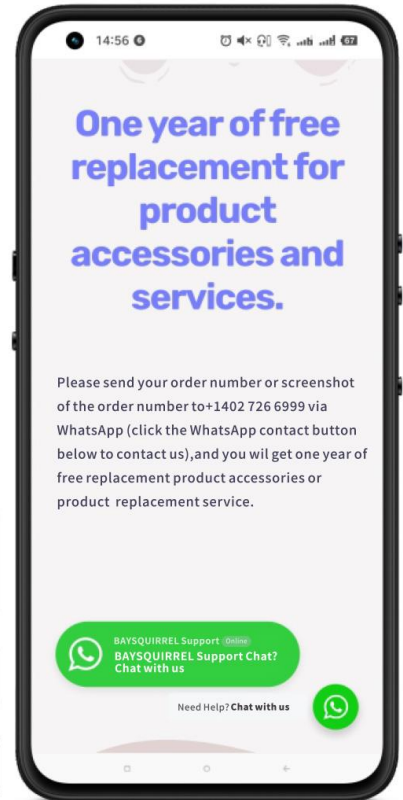
Scan the QR code to visit the BAYSQUIRREL official website(www.baysquirrel.vip) to view product installation and usage videos, and activate the 1-year free replacement service for non-human damage.

After-sales Email: support@baysquirrel.vip

After-salesSMS/WhatsApp: **US/CA + 1 402 726 6999**

Activation service/Product Explainer Videos: www.baysquirrel.vip

BAYSQUIRREL Makes Life Full of Innovation and Fun



Ceiling fan accessories list



Fan motor



Fan lamp shade



Remote control unit



Lifting hook



derrick

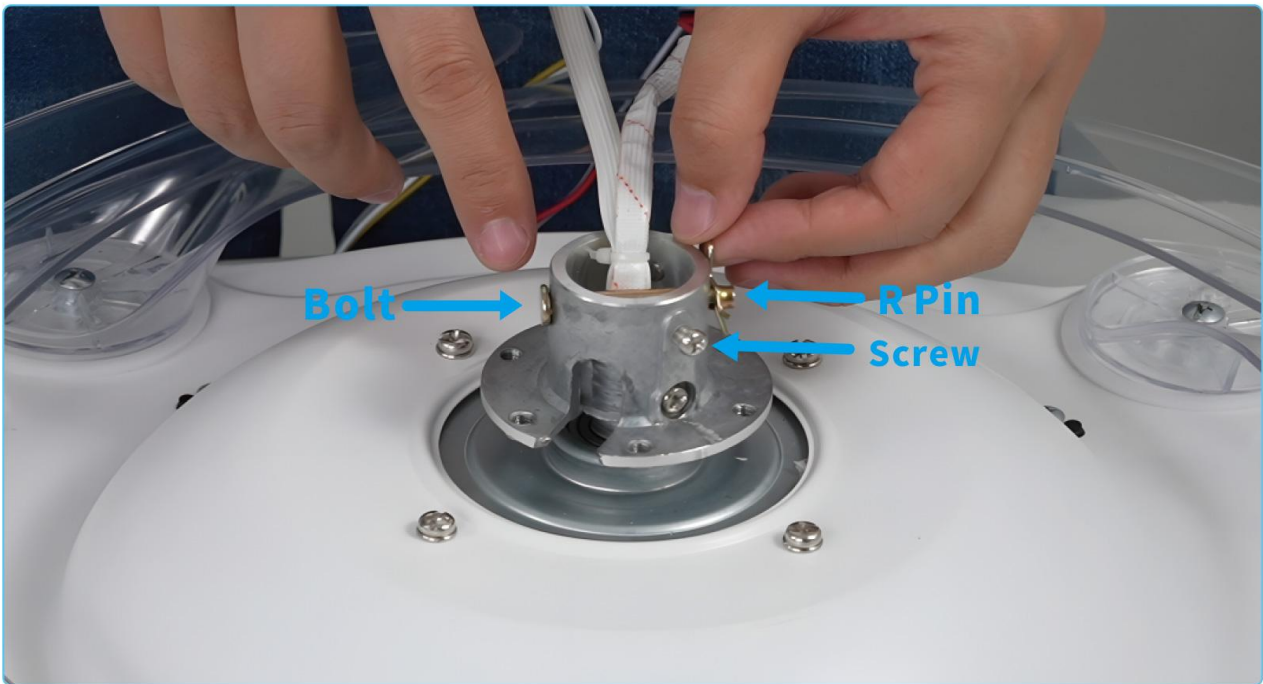


Screw bag



support

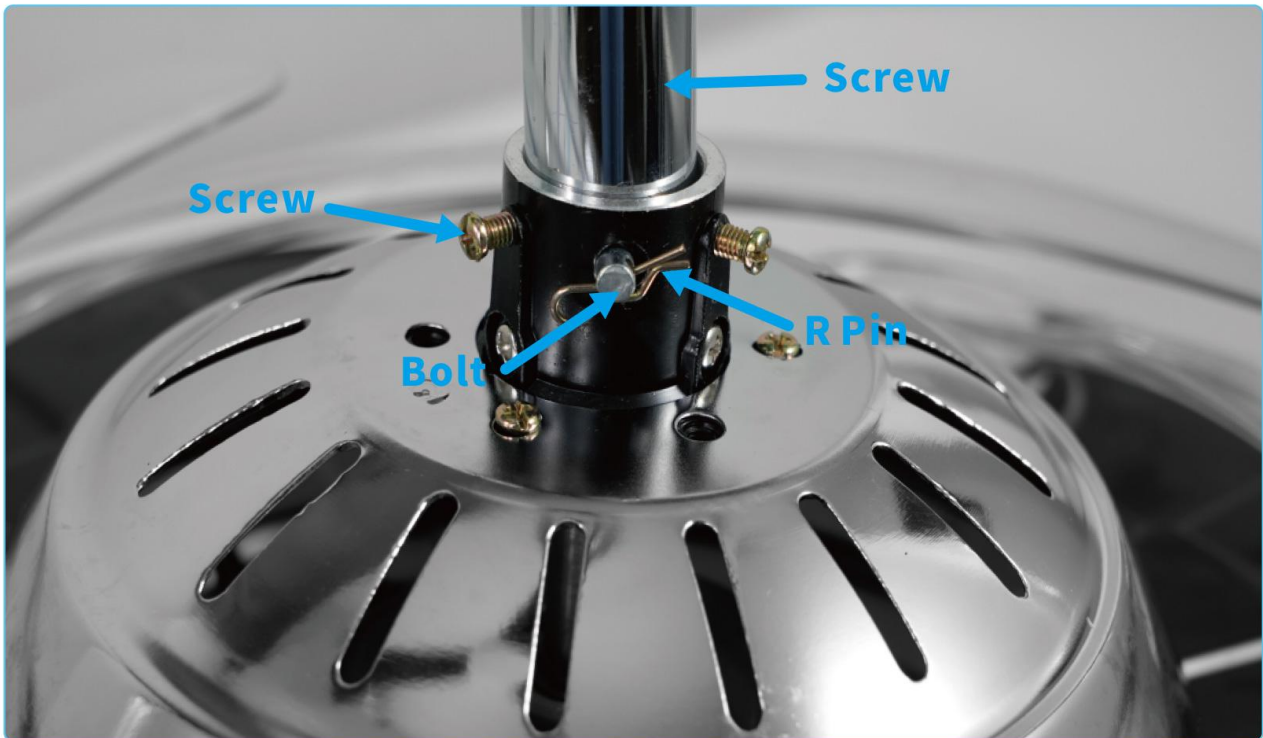
Installation method of downrod, coupling cover and canopy



Remove the R pin from the motor and bolts, and loosen the screws on both sides.



Pass the two wires of the motor through the coupling cover, canopy and lower rod in turn.

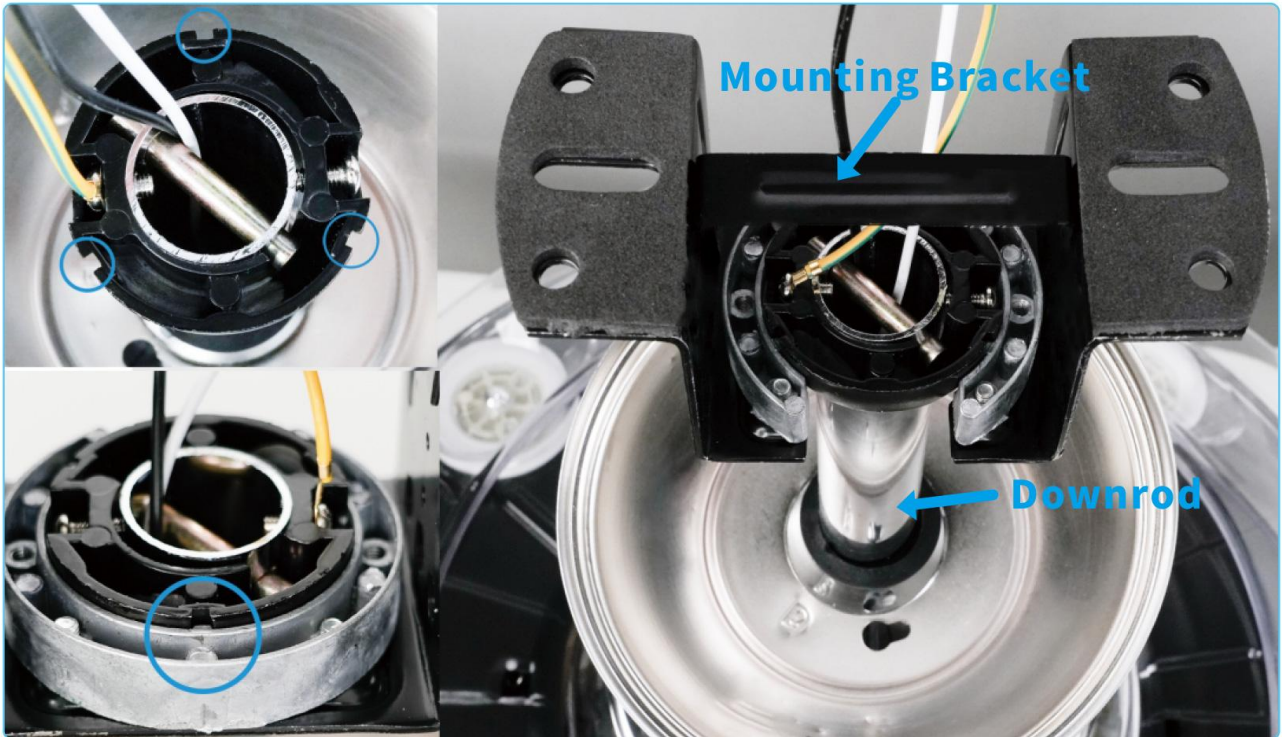


Lift the coupling cover, pass the bolt out of the hole in the motor base, then insert the R pin into the bolt. Finally, tighten the 2 screws evenly from both sides, otherwise it will cause the fan to shake.

Mounting bracket installation, install the ceiling fan to the mounting bracket

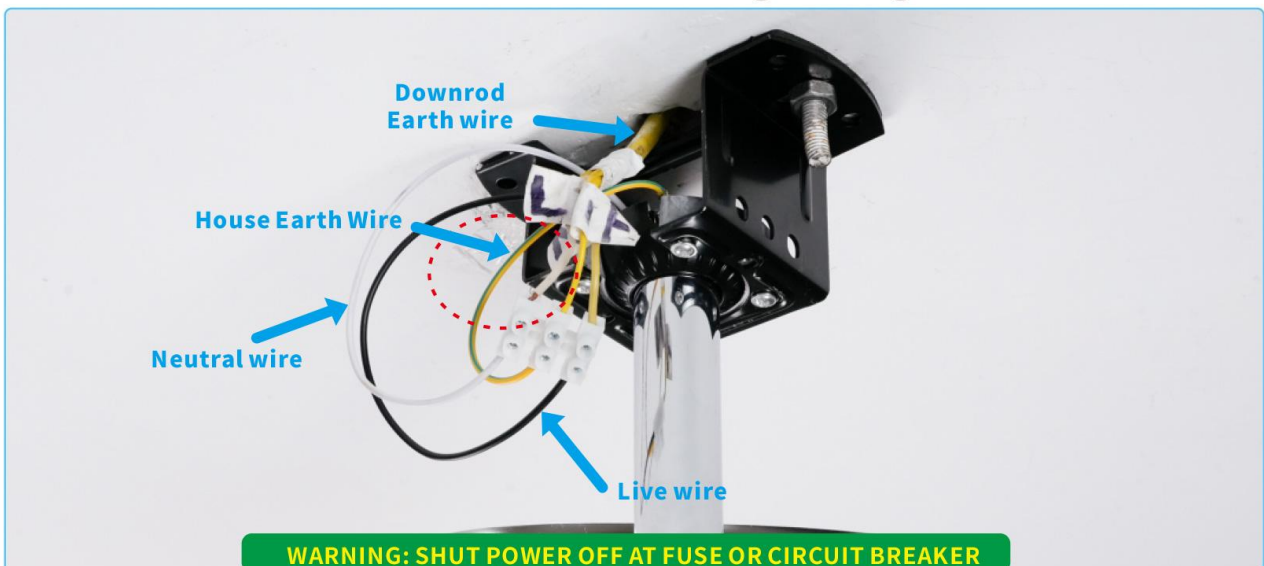


Use a marker to mark the location of the screw holes on the ceiling, then use an electric impact drill to drill holes in the cement ceiling, insert the expansion screws on the Mounting bracket into the holes, and finally fix the expansion screws in the cement ceiling with a wrench.



Hang the motor to the ceiling mounting bracket, Mesh the tip of the downrod with the groove of the mounting bracket, and confirm its stability, otherwise it will cause the fan to shake.

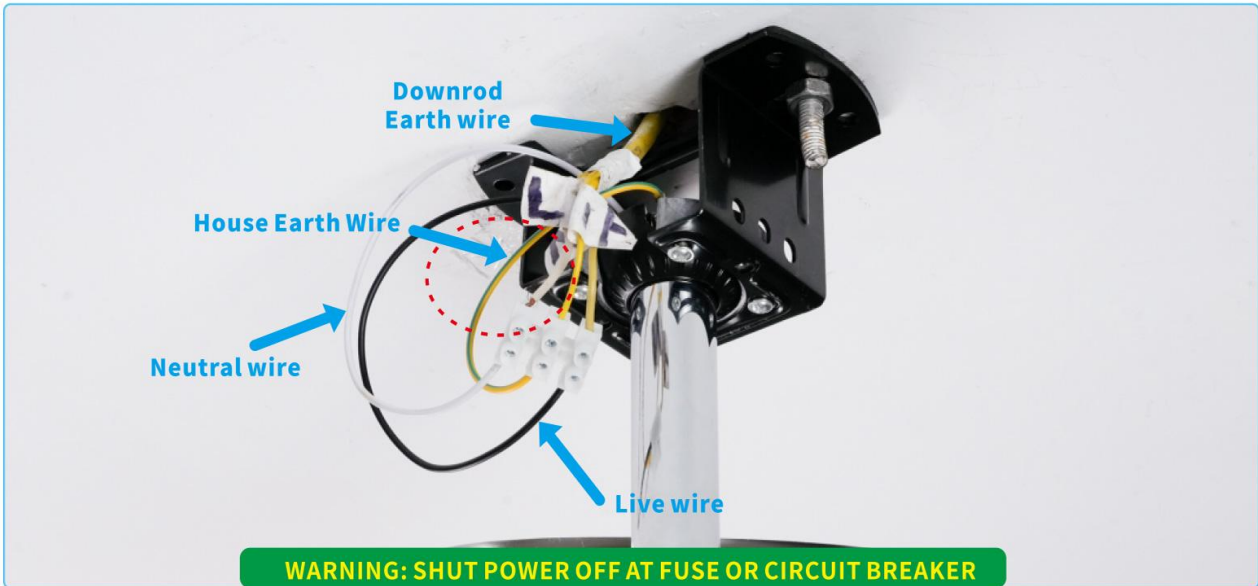
Cable connection for ceiling fan light driver



Yellow wire is connected to the earth wire, the black wire connects to the house live wire, and the white wire connects to the house neutral wire (as shown in the diagram)

Then check whether the lamp body works normally. It is recommended to ask a professional electrician to install it.

Cable connection for ceiling fan light driver



Yellow wire is connected to the earth wire, the black wire connects to the house live wire, and the white wire connects to the house neutral wire (as shown in the diagram)

Then check whether the lamp body works normally. It is recommended to ask a professional electrician to install it.



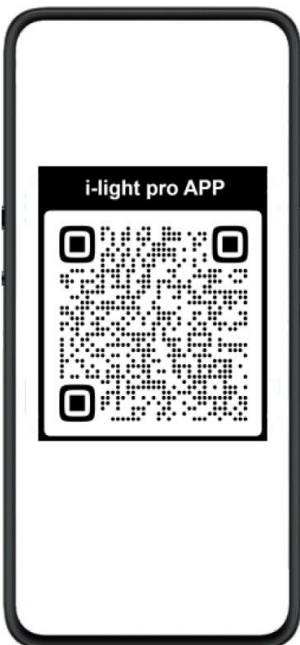
Hang the fan light on the support, loosen the two screws, cover the support and wire with the crown of the tree, align the two loose screws, rotate them, and tighten the two screws to secure them.



The lampshade is hung on the motor, and the wire is connected, and the installation is complete.

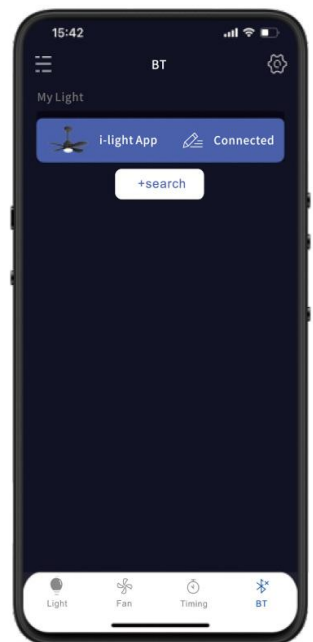
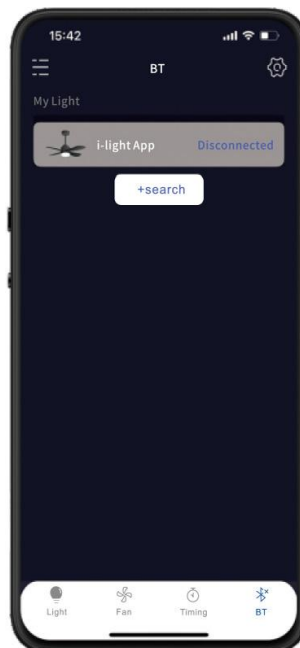
I-LIGHT PRO APP OWNER'S MANUAL (APP CONNECTED CEILING FAN)

1. Scan the QR code to download the "i-light pro APP"



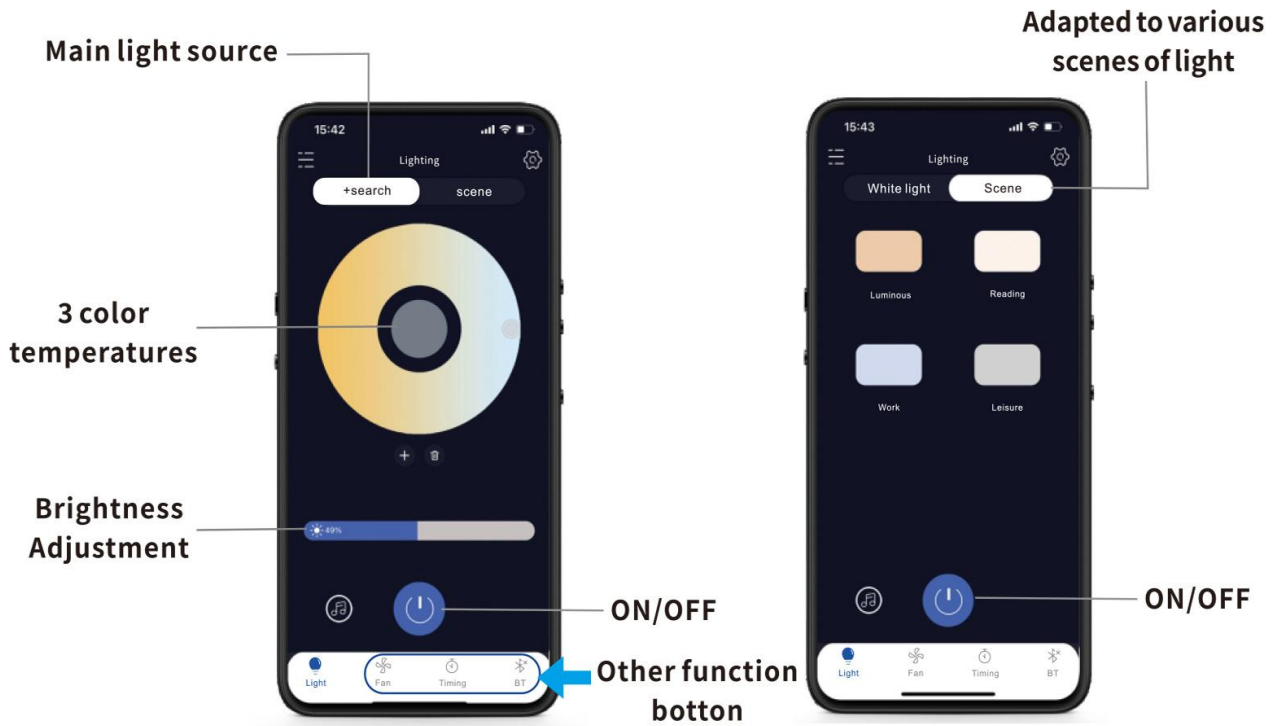
2. Open the app and click "Search"

3. Find the light and click on the ceiling fan

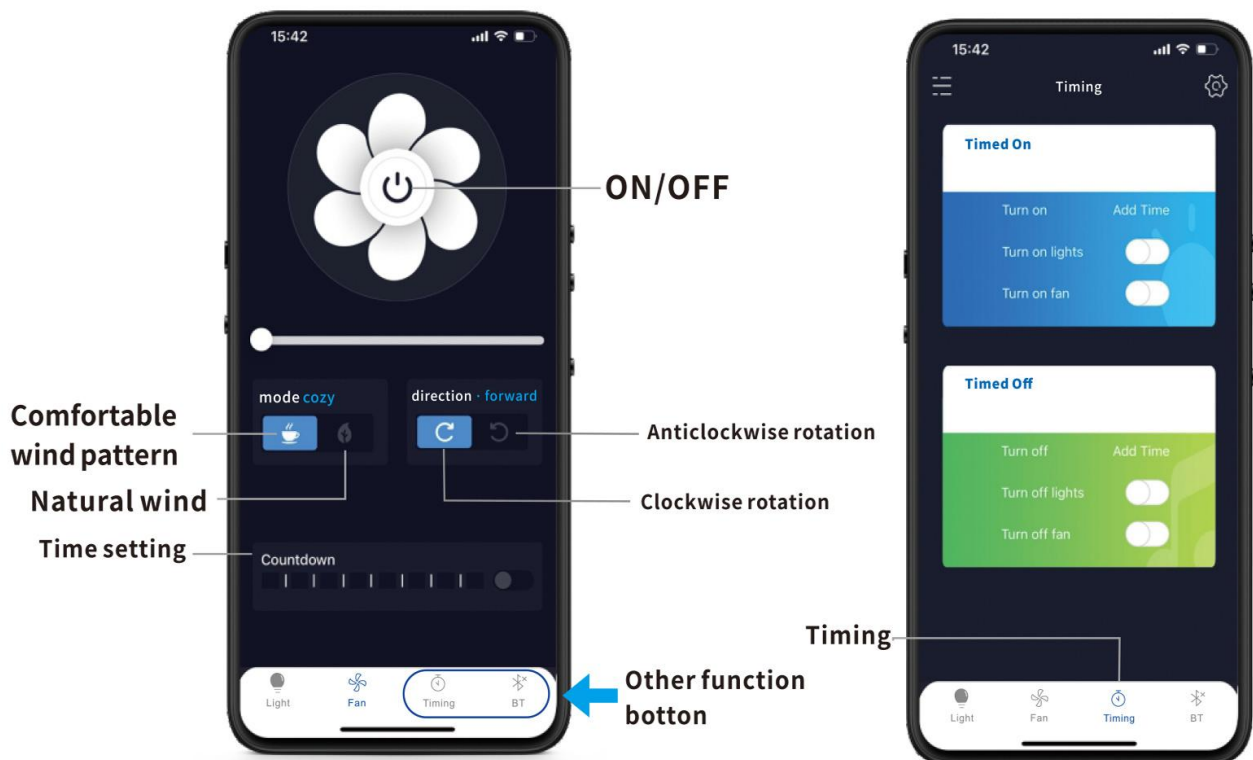


4. You can name the ceiling fan for easy connection

i-light pro APP Owner' s Manual

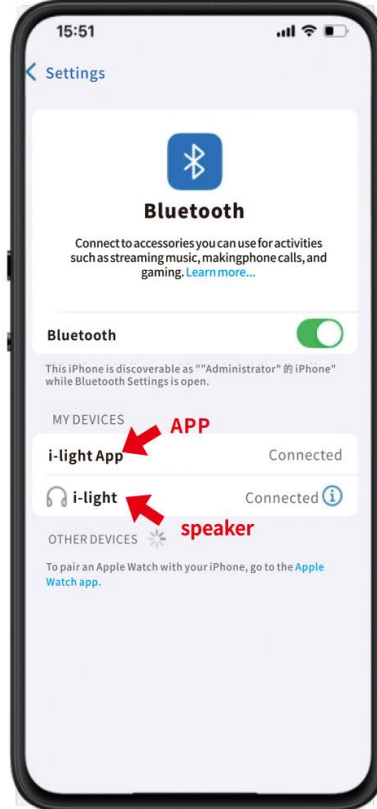
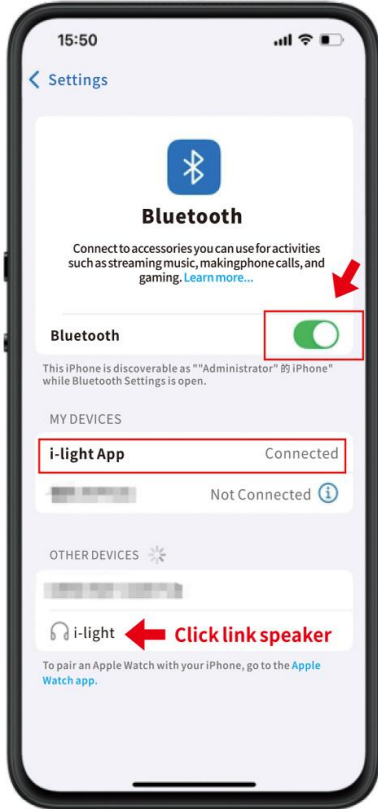


i-light pro APP Owner' s Manual

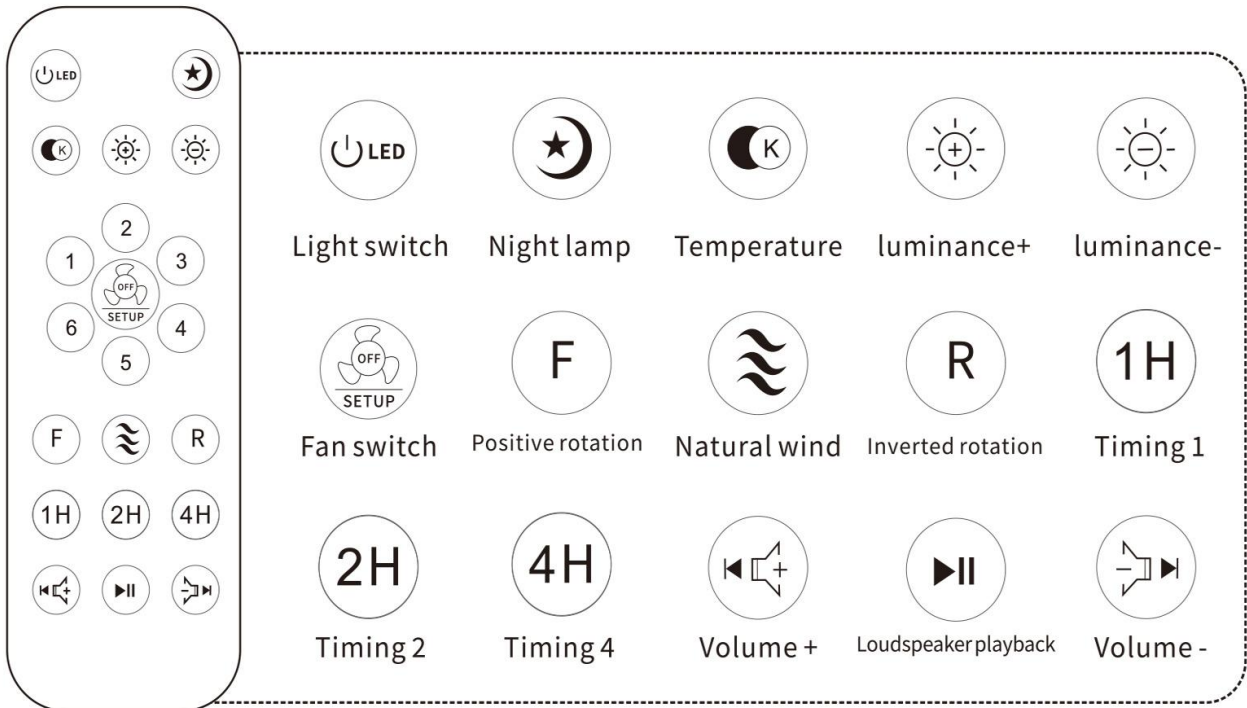


Linked Bluetooth speaker

1. Open bluetooth in mobilephone settings.



2. When the ceiling fan is powered on, the speaker will make a ding-dong sound, and the speaker is already turned on. When you open the settings as shown in the picture, and click "i-light", the speaker will also make a ding-dong sound, and the speaker is connected to the mobile phone.



Connect the device to the power supply and confirm that the device can work normally (the light turns on slowly); Turn off the power of the device for 5~10 seconds and then turn on the power again; Within 3 to 5 seconds of power on, keep clicking "OFF SETUP" until the light flashes, indicating successful pairing. The code pairing of the remote control is successful. At this time, you can press the button to control the device.