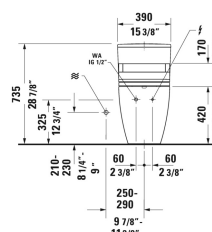
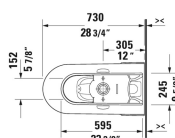
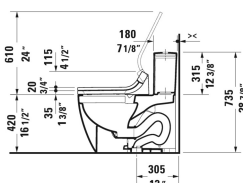
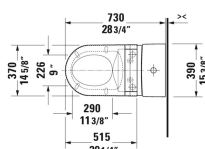


ME by Starck Toilet kit # D4202400

| < 14 5/8" Inch > |



| Toilet kit | Dimension | Weight | Order number |
|---|------------------------|----------|--------------|
| One-Piece toilet for SensoWash® & SensoWash® Starck C shower-toilet seat | | | |
| Colors | | | |
| 00 White | | | |
| Variant | | | |
| | 14 5/8" x 28 3/4" Inch | 167.1 lb | D4202400 |
| Suitable products | | | |
| SensoWash® Starck C shower-toilet seat for ME by Starck, Starck 2, Starck 3 and Darling New* Rear-, Lady- and Comfortwash, individual adjustment of water-, air- and seat surface temperature as well as nozzle position and jet strength, heated seat, warm air dryer, power actuated lid and seat, night light, 2 individually programmable user profiles, remote control included, self-cleaning wand, on / off-button, with concealed connections, Quick release: easy seat unit removal and attachment, 14 5/8" x 20 1/4" Inch | 14 5/8" x 20 1/4" Inch | | 610001 |
| One-Piece toilet Duravit Rimless for SensoWash® rimless, connecting elements for SensoWash with concealed connections included, syphonic, 12" rough-in, only in combination with SensoWash, vertical outlet, cUPC® listed*, 14 1/8" x 28 3/4" Inch | 14 1/8" x 28 3/4" Inch | | 217351 |

All drawings contain the necessary measurements which are subject to standard tolerances. They are stated in inch & mm and are non-binding. Exact measurements, in particular for customized installation scenarios, can only be taken from the finished ceramic piece.