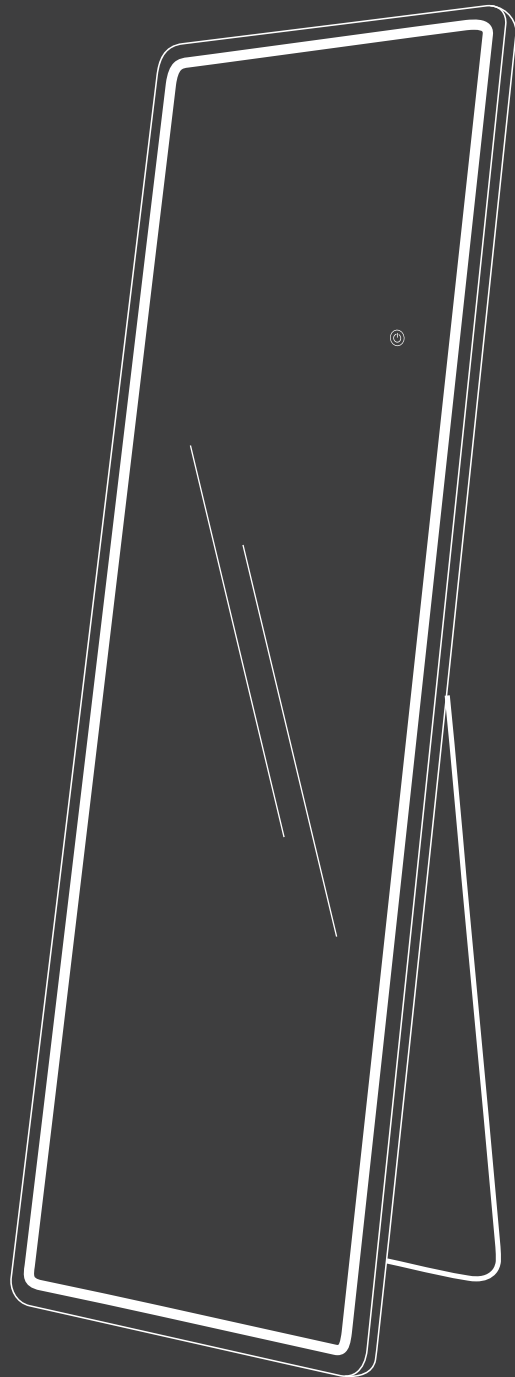


Full Length Mirror

Instruction Manual



1 Before Assembly

Assembly Tips

- Check the list of contents before assembly to ensure that all parts are included in the package.
- Make sure the wall can bear the weight of the mirror.
- Do not use string or chain to hang the products.

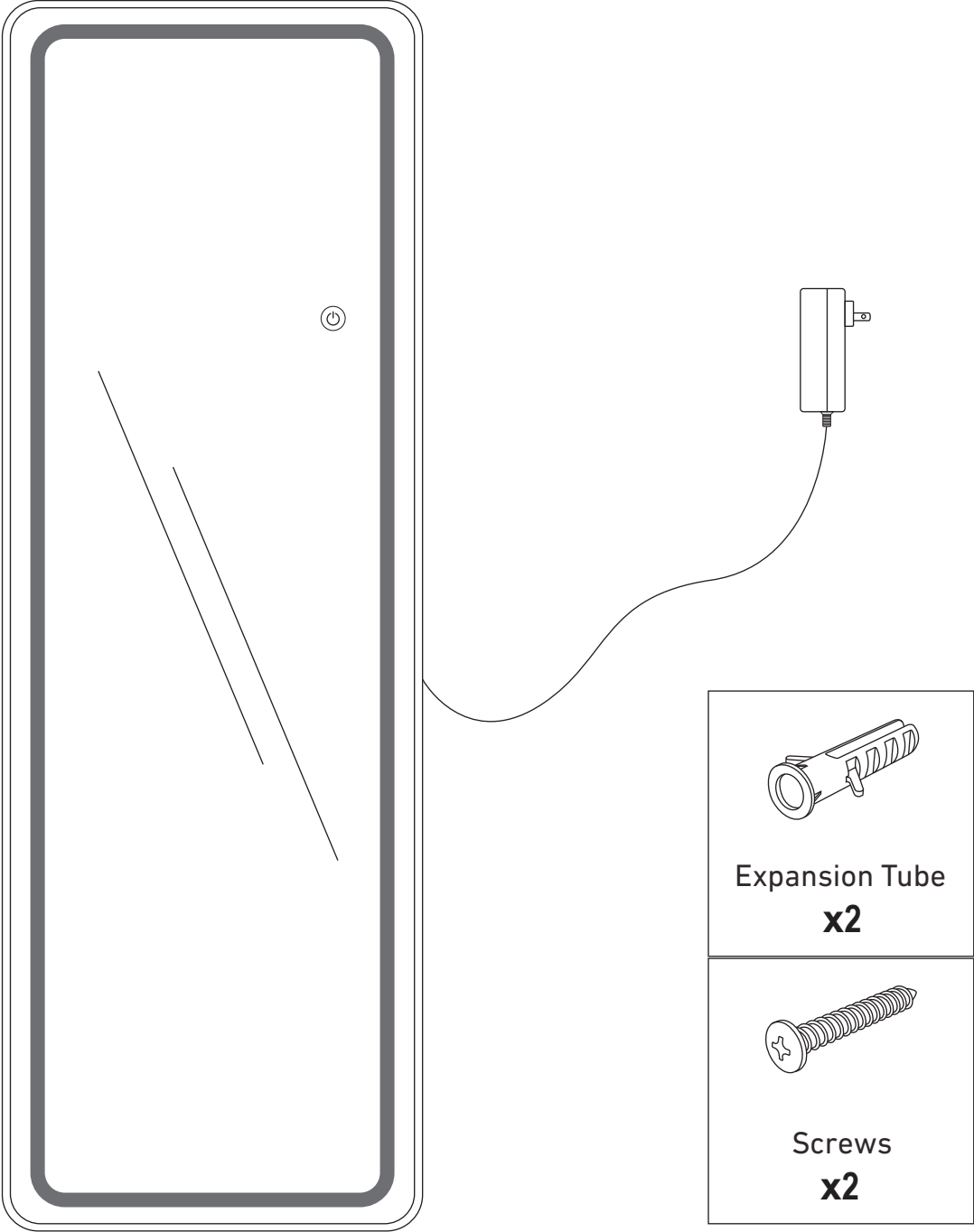
Warning & Caution

- Turn off electricity at circuit breaker or main fuse box before installation. Consult a licensed electrician if in doubt.
- These instructions are provided for your safety.
- It is very important you read them completely before installing the fixture.
- We strongly recommend that a licensed, professional electrician perform the installation.
- Keep small parts and fittings out of children's reach and keep children well away from construction area.
- This fixture is for indoor use only. Use ONLY the supplied LED driver to power fixture.
- Input 120Vac /60Hz /36W.

Care Advice

- Before using, clean with warm water and a soft, lint-free cloth.
- Check all the screws and bolts are tight every three months or as needed.
- Clean with an ammonia-free glass cleaner or detergent.
- Avoid spraying cleaners directly onto the mirror.

2 Package List



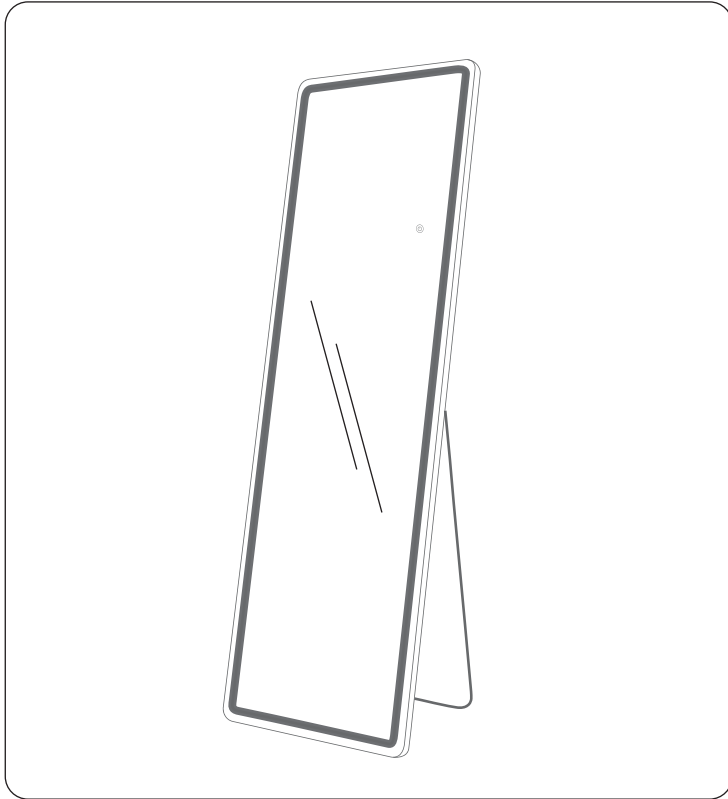
Mirror
x1

Tools Required (Not Provided)

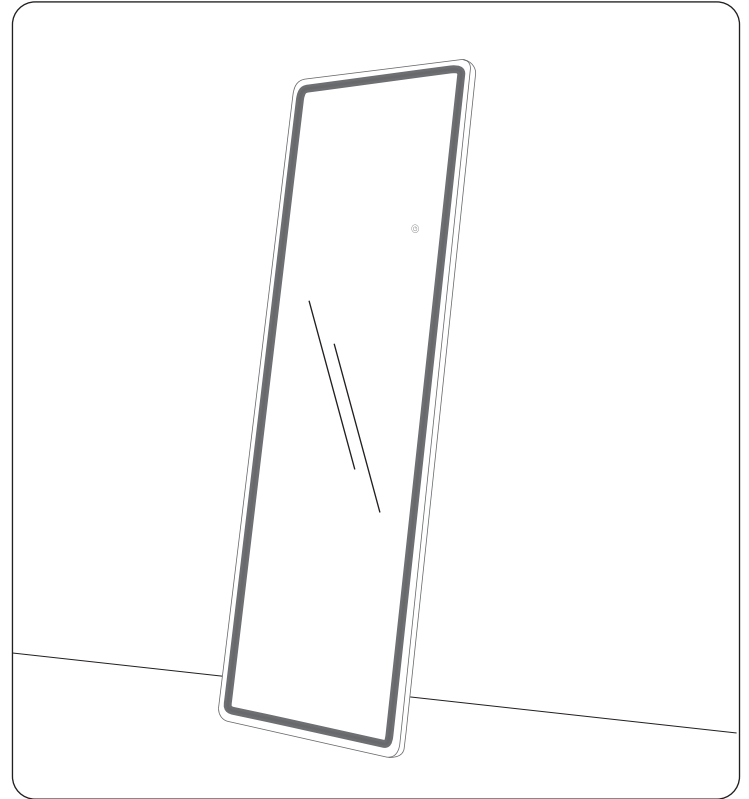


3 Usage Method

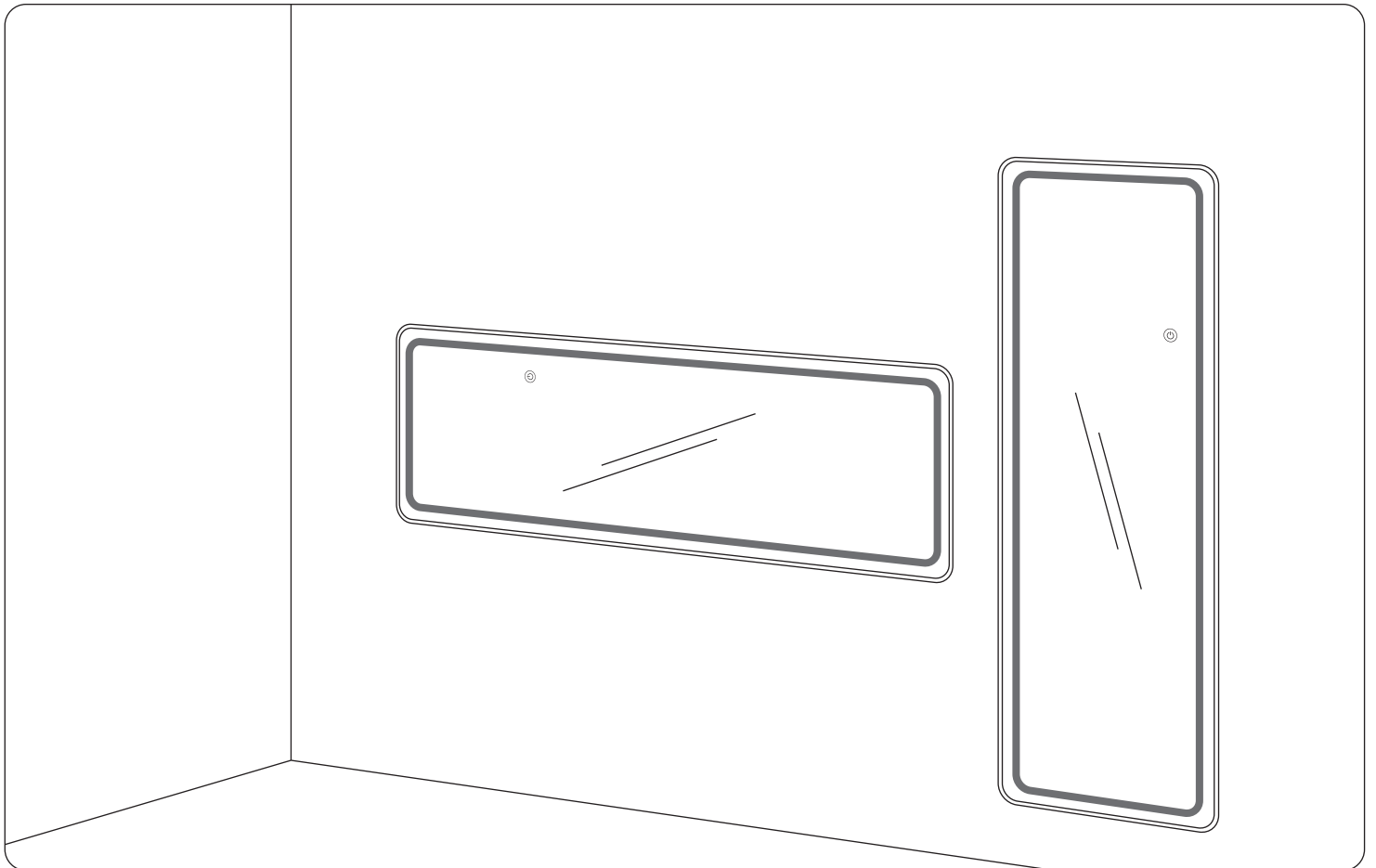
Standing



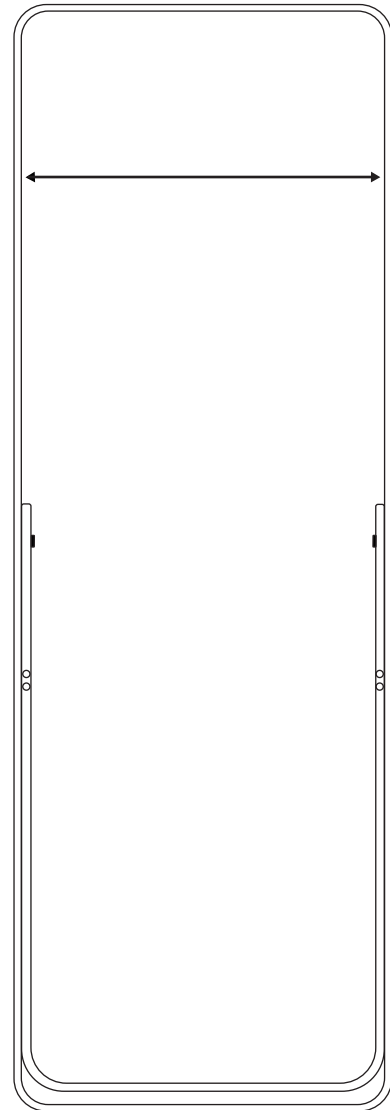
Leaning



Hanging



Step 1



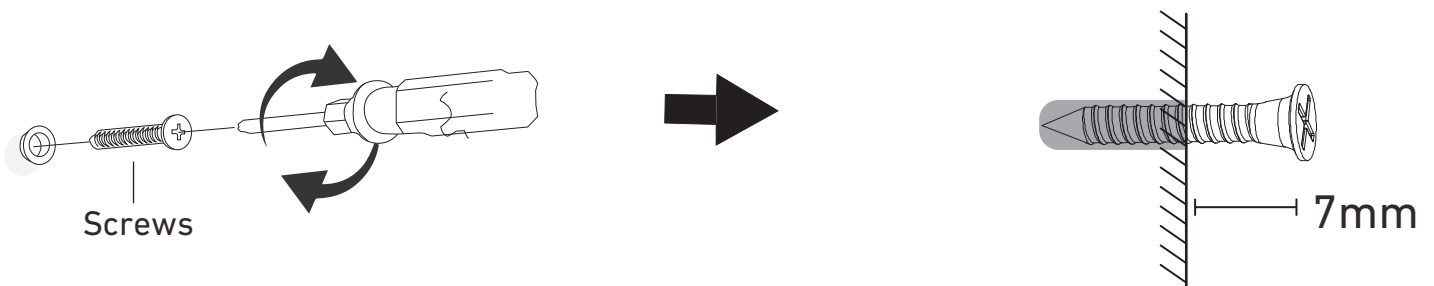
Use a ruler to accurately measure the distance between the mirror's two hooks, then measure and mark the same distance on the wall. Make sure they match perfectly.

Step 2



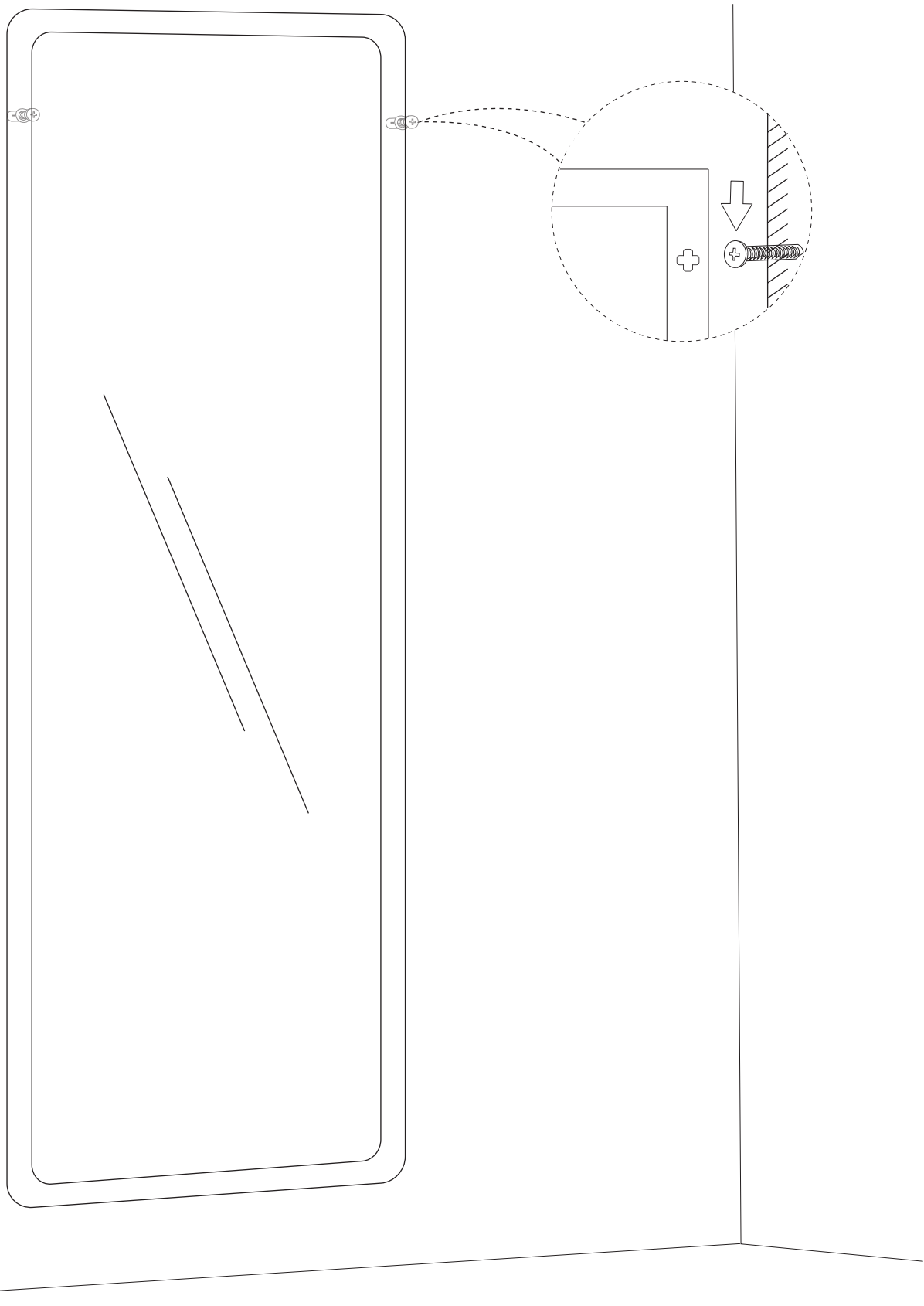
Drill holes at the marked positions on the wall. Hammer the Expansion Tube into the holes.

Step 3



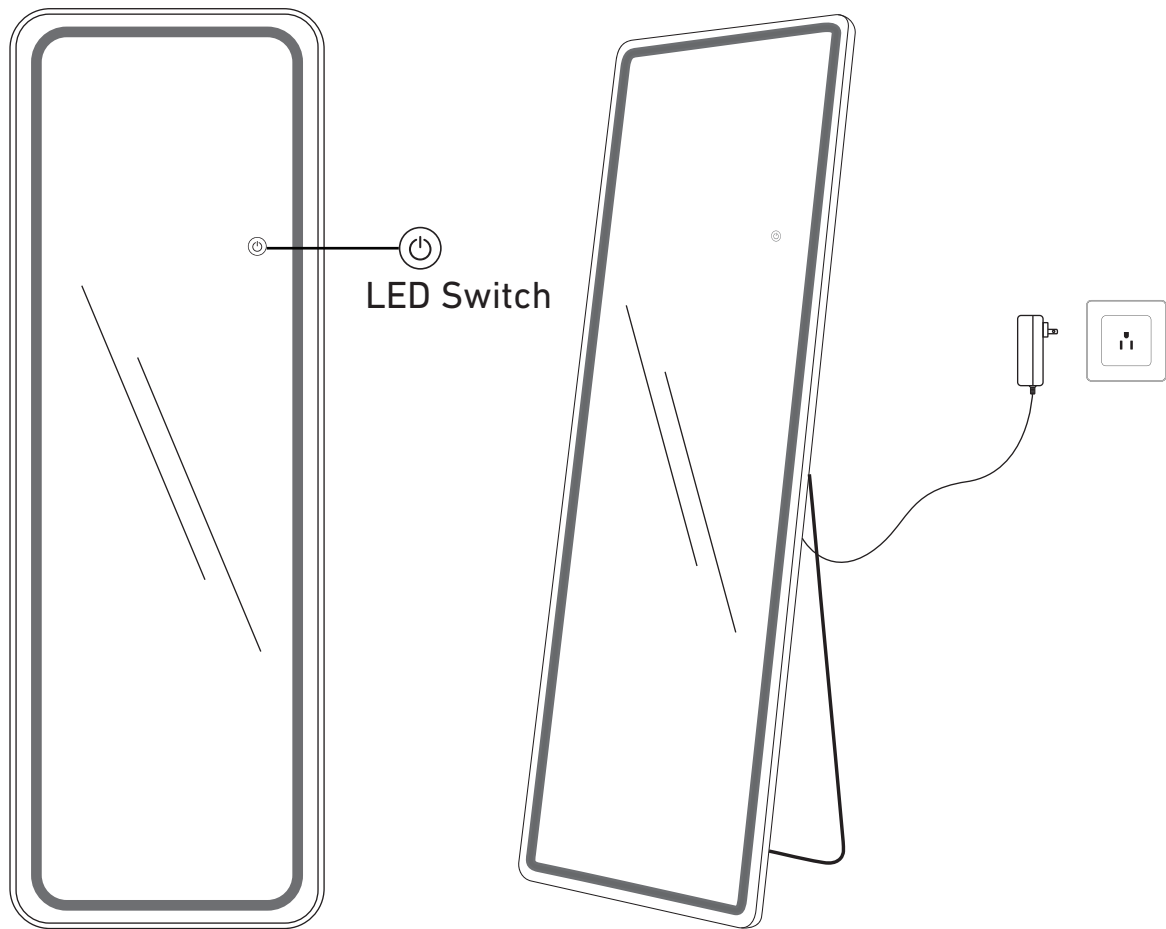
Fix the Screws into the Expansion Tube, leaving about **7mm** of the screws exposed.

Step 4



Hang the Mirror on the wall.

Step 5



Junction box(not supplied)

Warning: Must be operated by a professional licensed electrician.

ON/OFF/Color temperature changing

【3 COLORS & DIMMING FUNCTION】 Short press the intelligent touch button to turn on/off and adjust 3 colors: warm light, cold white, and warm white. Press and hold this button for a few seconds to adjust the brightness you like.

DISCLAIMER: Be careful! Glass products are fragile and may badly injure users. It should be clearly known by users that company won't be responsible for any injuries caused during use.

