

NOTICE

*Please make sure that you have all parts indicated and they are in good condition before you begin assembly of this item. Refer to part list and hardware list below for guidance.

*This item should be assembled on a soft surface to prevent scratching the finish during assembly.

*This item may require periodic tightening.

*If you are having difficulty, our friendly Customer Care team is always here to help. Please email customersupport@safavieh.com

PREPARATION

*Before beginning assembly of product, make sure all parts are present. Compare parts with part contents list and hardware contents list.

*If any part is missing or damaged, do not attempt to assemble the product.

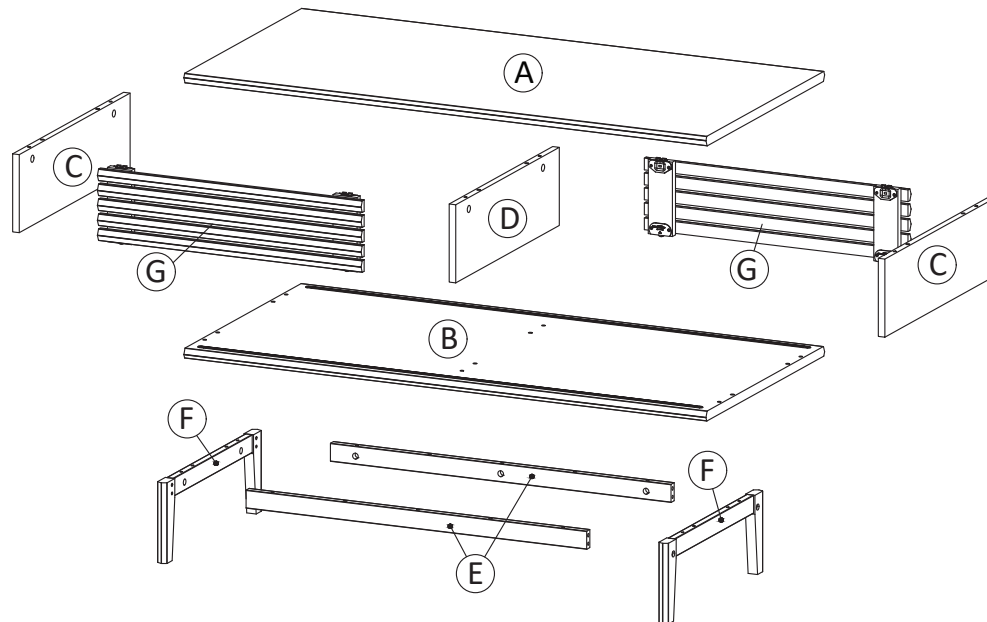
*Estimated Assembly Time: 60 minutes.

*Tools Required for Assembly (included): Allen Key

CARE AND MAINTENANCE

Always use felt pads under all articles to prevent discoloration or softening of the lacquer. Plastic and rubber bases on items can discolor wood. Wipe up spills immediately and avoid common hazards such as hot dishes, harsh solvents and abrasives. Cleaning should be done with a soft lint free cotton cloth dampened with water or furniture polish. On highly used surfaces we recommend applying a quality paste wax which should be used on a regular basis to provide additional protection from scratches and spills. How often you apply the wax depends on how much wear the furniture receives.

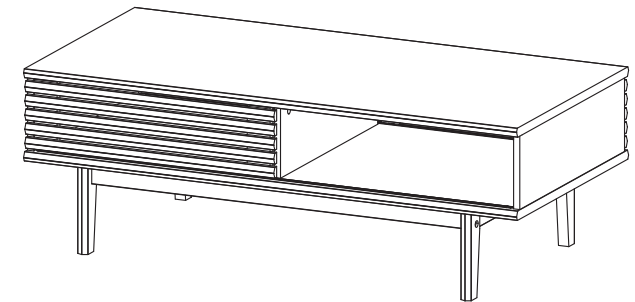
Part List



 **SAFAVIEH**
FURNITURE

Model# COF9605

Product Dimensions: 47"Wx23"Dx16"H



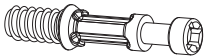


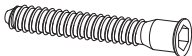




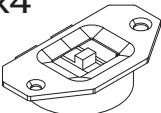
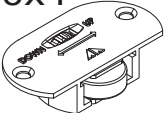

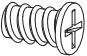
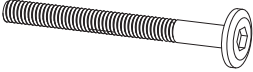
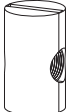
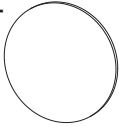

WARNING :

WEIGHT CAPACITY: 97 LBS.

Warning : Do not stand on media stand.

Warning : Do not over torque bolts.

Hardware List

<div>HW1x16</div> <div></div> <div>Ø 6 x 35 mm</div>	<div>HW2x16</div> <div></div> <div>Ø 15 mm</div>	<div>HW3x24</div> <div></div> <div>Ø 8 x 30 mm</div>	<div>HW4x6</div> <div></div> <div>M 7 x 50 mm</div>	<div>HW5x2</div> <div></div>
<div>HW6x6</div> <div></div> <div>Ø 15 mm</div>	<div>HW7x4</div> <div></div>	<div>HW8x16</div> <div></div> <div>M 3.5 x 13 mm</div>	<div>HW9x4</div> <div></div>	<div>HW10x4</div> <div></div>
<div>HW11x4</div> <div></div>	<div>HW12x12</div> <div></div> <div>M 6 x 12.5 mm</div>	<div>HW13x4</div> <div></div> <div>M 6 x 55 mm</div>	<div>HW14x4</div> <div></div>	<div>HW15x4</div> <div></div> <div>Ø 20 mm</div>
<div>HW US70x1</div> <div></div>				

Part List & HW For Multi-Box Items

Piece	Description	Qty
A	Top Board	1
B	Bottom Board	1
C	Side Board	2
D	Center Board	1
E	Bottom Skirt	2
F	Assembly Leg	2
G	Door	2

Piece	Description	Qty
HW1	Cambolt	16
HW2	CamLock	16
HW3	Dowel	24
HW4	Screw M 7 x 50 mm	6
HW5	Allen Key	2
HW6	Screw Cap	6
HW7	Silicon Bumper	4
HW8	Screw M 3.5 x 13 mm	16
HW9	Sliding Top	4
HW10	Sliding Bottom	4
HW11	Floor Protector	4
HW12	Screw M 6 x 12.5 mm	12
HW13	Screw M 6 x 55 mm	4
HW14	Cross Dowel	4
HW15	Sticker	4
HW US70	Anti-Deflection Bar	1

PREPARATION

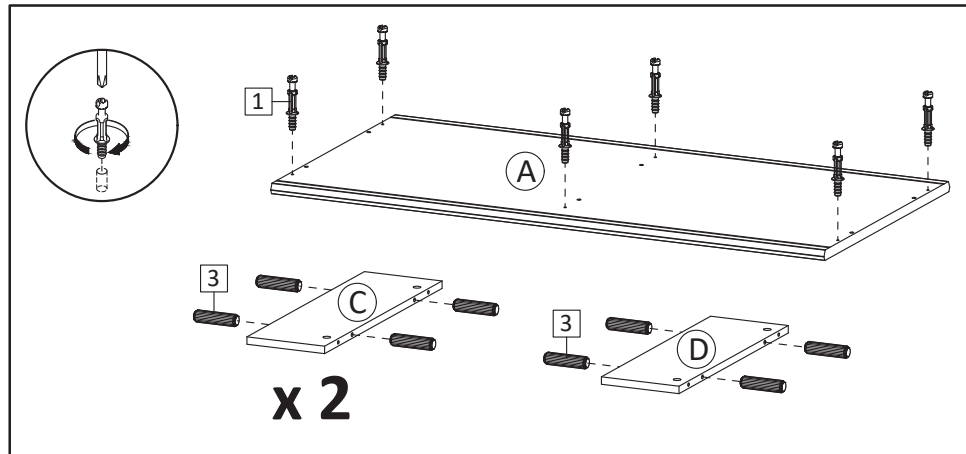
*Before beginning assembly of product, make sure all parts are present. Compare parts with part contents list and hardware contents list.

*If any part is missing or damaged, do not attempt to assemble the product.

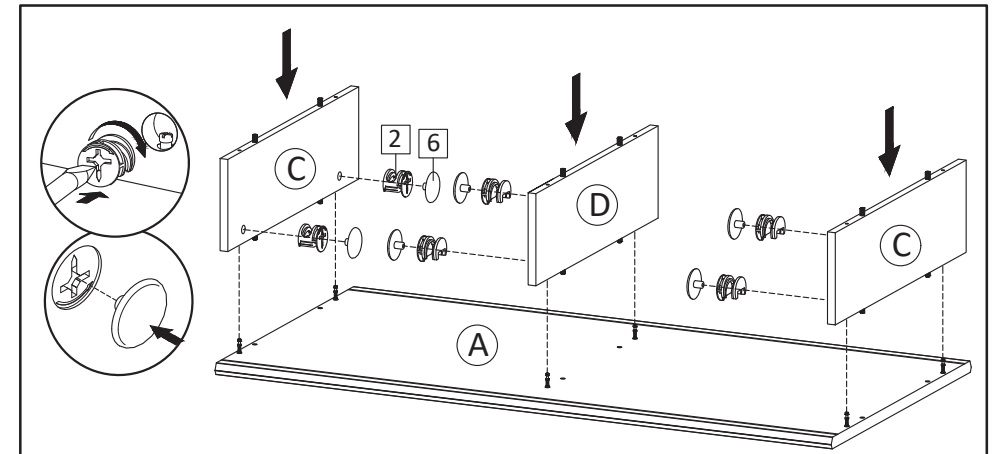
*Estimated Assembly Time: 60 minutes.

*Tools Required for Assembly (included): Allen Key

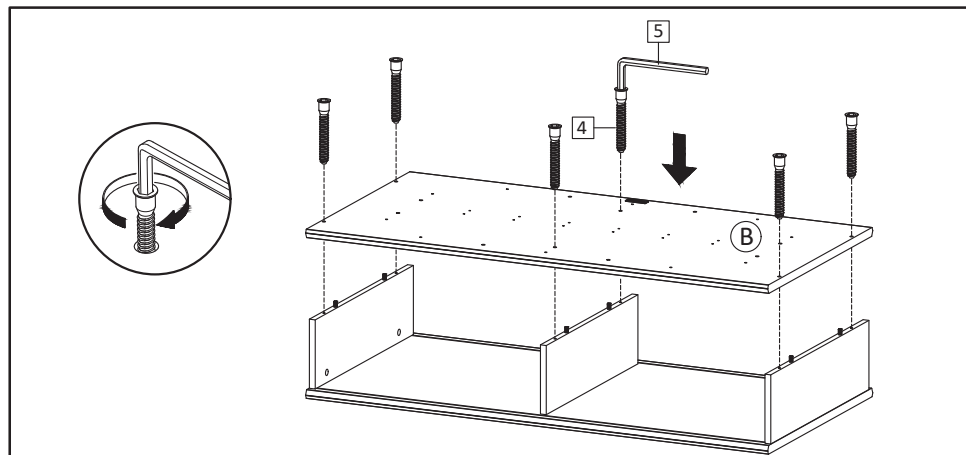
*If you are having difficulty, our friendly Customer Care team is always here to help. Please email customersupport@safavieh.com



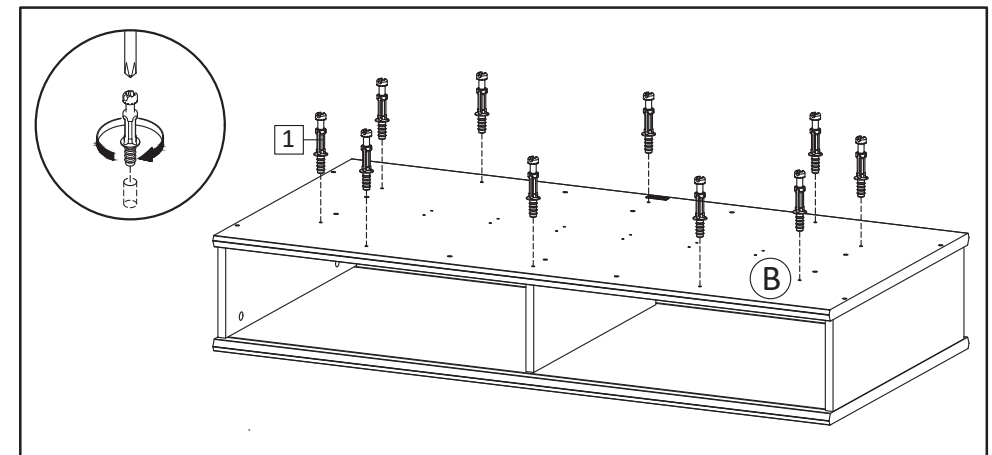
STEP1: Insert Cambolt (HW1) into Top Board (A) . Insert Dowel (HW3) into Side Boards (C) and Center Board (D).



STEP2: Attach Side Boards (C) and Center Board (D),into Top Board (A) . Insert Camlock (HW2) then tighten using screwdriver. Put Screw Cap (HW6) over the camlock.



Step3: Place Bottom Board (B) as figure and secure with Screw M7x50mm (HW4),tighten screws using Allen Key (HW5).



STEP4: Insert Cambolt (HW1) into Bottom Board (B) as figure.

PREPARATION

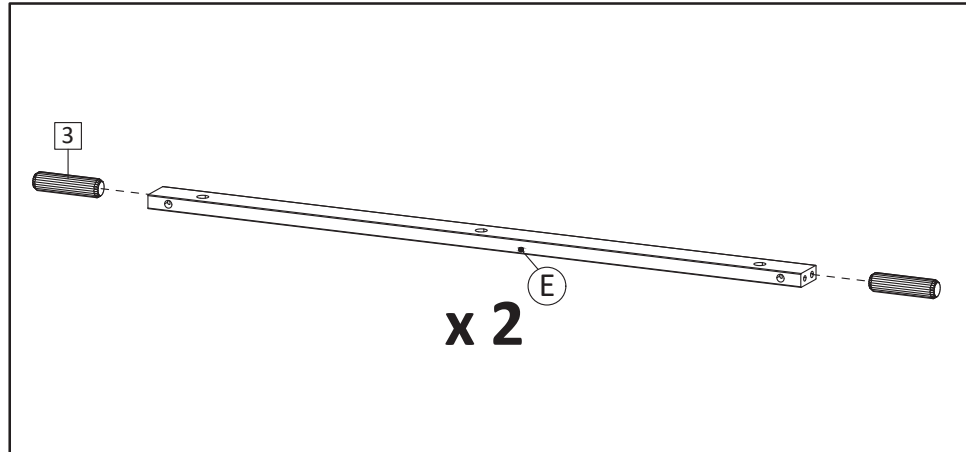
*Before beginning assembly of product, make sure all parts are present. Compare parts with part contents list and hardware contents list.

*If any part is missing or damaged, do not attempt to assemble the product.

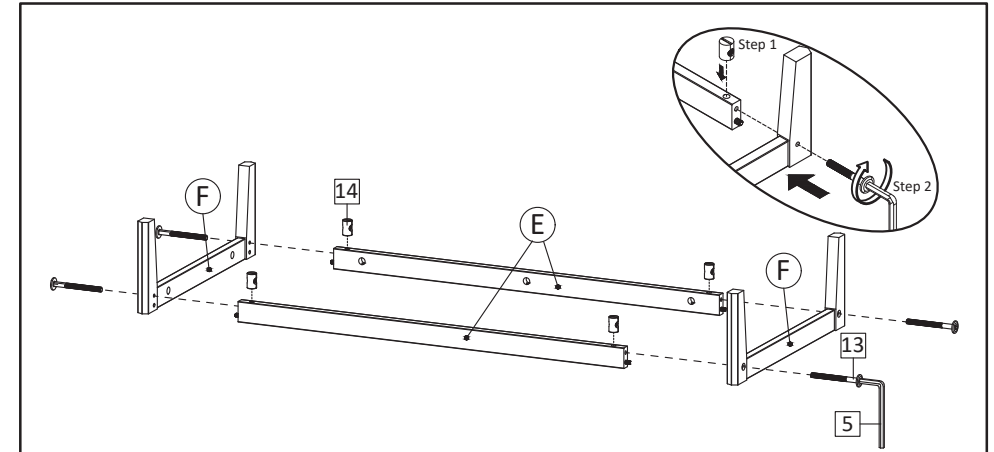
*Estimated Assembly Time: 60 minutes.

*Tools Required for Assembly (included): Allen Key

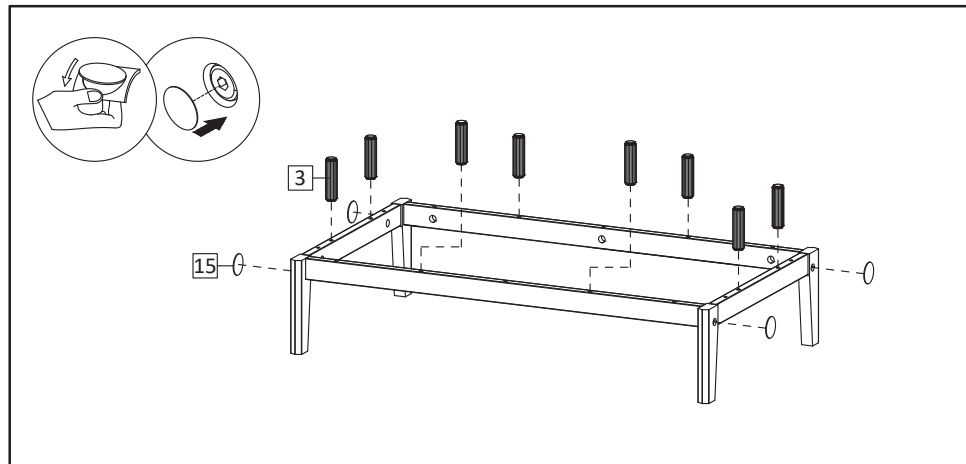
*If you are having difficulty, our friendly Customer Care team is always here to help. Please email customersupport@safavieh.com



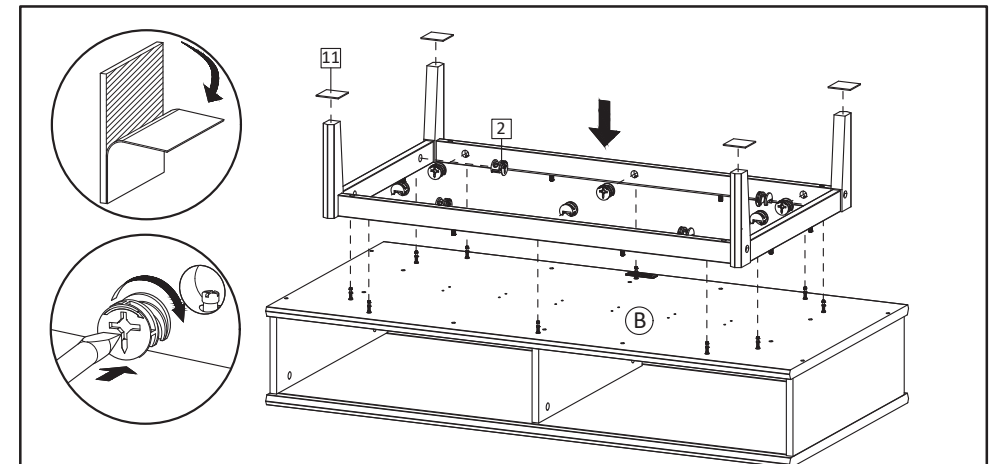
STEP5: Insert Dowel (HW3) into Bottom Skirt (E).



STEP6: Insert the Cross Dowel (HW14) into Bottom Skirt (E). Combine the Assembled Leg (F) and Bottom Skirt (E) together as picture. Insert Screw M6x55mm (HW13) through the hole in Assembled Leg to the Bottom Skirt, then tighten the screw.



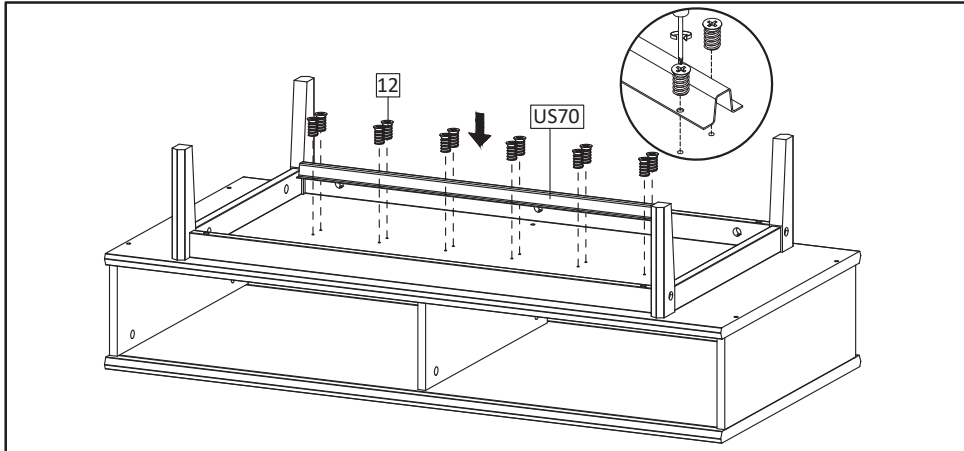
STEP7: Insert Dowel (HW3) after the legs are assembled in step 6, attach Sticker (HW15) to cover the screw hole as figure.



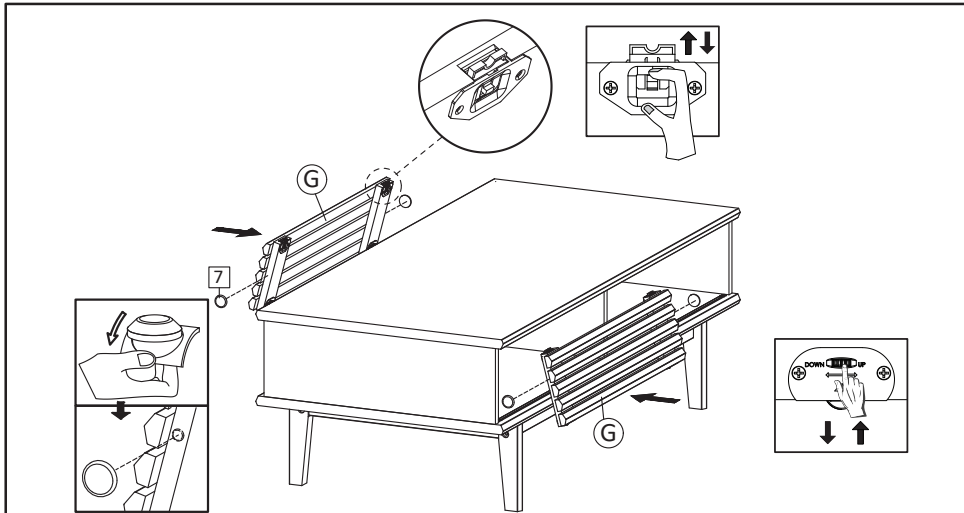
STEP8: Attach the Assembled Leg onto Bottom Board Board (B). Insert Camlock (HW2) then tighten using screwdriver. Insert Floor Protector (HW11) into Leg as figure.

PREPARATION

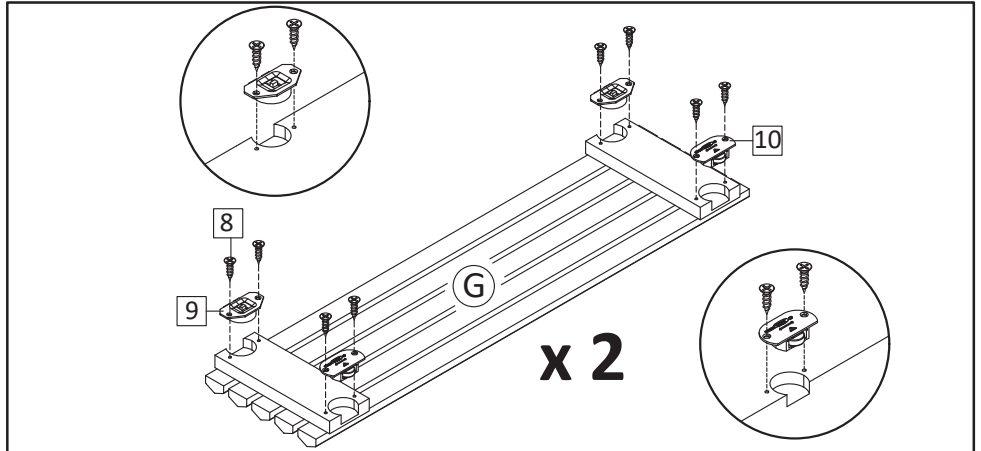
- *Before beginning assembly of product, make sure all parts are present. Compare parts with part contents list and hardware contents list.
- *If any part is missing or damaged, do not attempt to assemble the product.
- *Estimated Assembly Time: 60 minutes.
- *Tools Required for Assembly (included): Allen Key
- *If you are having difficulty, our friendly Customer Care team is always here to help. Please email customersupport@safavieh.com



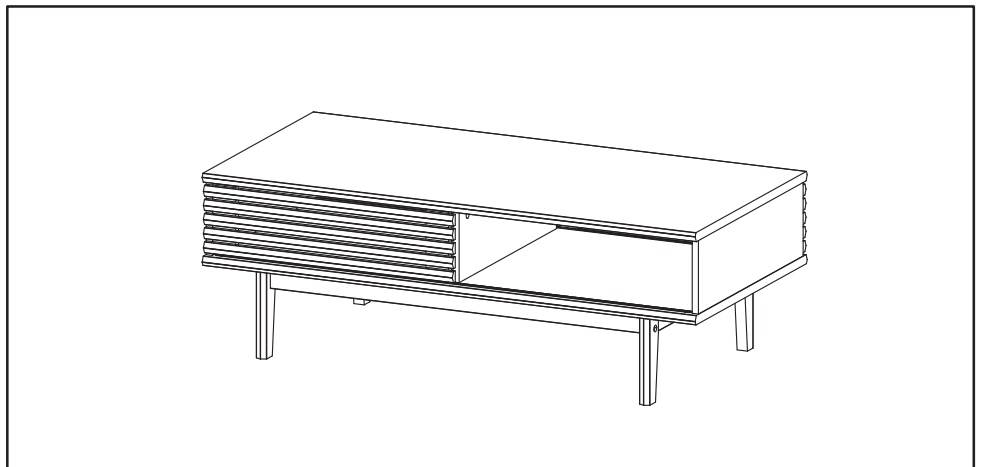
STEP9: Attach Anti-Deflection Bar (HWUS70) using Screw M6x12.5mm (HW12) into Bottom Board (B).



Step11: Peel the back paper of Bumper (HW7) then place 2 pcs on each Door with position as shown in the figure. Insert the Sliding Top (HW9) pin into the groove line of Top Board. Position the Sliding Bottom (HW10) into the grooved sliding track. Adjust gap of the door, by scroll the button on Sliding Roller (HW10). Follow the down and up direction. Slide the door to right and left ensuring the door has been placed properly in the provided track.



STEP10: Insert Sliding Top (HW9) and Sliding Bottom (HW10) using Screw M3.5x13mm (HW8) into Door (G).



STEP12: Assembly is complete.