

AXIOM
Second Edition



B E R N H A R D T



AXIOM

B E R N H A R D T

A softer expression of modern design, Axiom combines clean lines, geometric details and minimalist forms with luminous materials and a hint of shine. Pieces are made for layering and depth in a chic, monochromatic palette of neutrals. Hand-applied plaster and a linear wood grain add subtle texture, highlighted by clear acrylic hardware and brushed stainless steel. Open architectural frames and graceful curves give the collection lightness and serenity. Axiom is sophisticated, but quietly relaxed with a look that feels cool and inviting.









SHOWN ABOVE:
381127 Side Table
381021 Cocktail Table

SHOWN AT RIGHT:
381127 Side Table







SHOWN ABOVE:
381229 Nightstand

SHOWN AT RIGHT:
381050 Dresser





SHOWN ABOVE:
381H09/381FR09 Panel Bed
381236 Nightstand
381506 Benches
381056 Dresser
381322 Mirror

SHOWN AT LEFT:
381506 Bench
381H09/381FR09 Panel Bed
381236 Nightstand



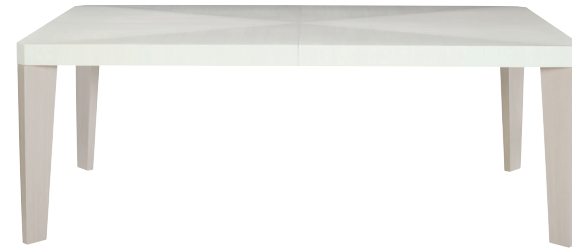
INDEX

381222 DINING TABLE

Overall: W 82 (102-122) | D 44 | H 30 in.
Overall: W 208.28 (259.08-309.88) | D 111.76 | H 76.20 cm.

Poplar solids and engineered faux anigre veneers. Fancy face top in Linear White finish. Two 20" leaves - not fancy face. Linear Grey finish on legs. Adjustable glides.

Appearing on pages 2, 3, 15.

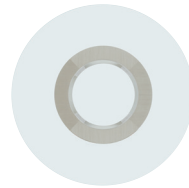


998E60 DINING TABLE TOP

381773 DINING TABLE BASE

Overall: W 60 | D 60 | H 30 in.
Overall: W 152.40 | D 152.40 | H 76.20 cm.

Poplar solids and engineered faux anigre veneers. Base has four leg posts and connecting circular top and base. Linear Grey finish on interior and exterior face, including top surface of circular top. Linear White finish on underside of top, both sides of leg posts and top surface of circular base. Adjustable glides. Also available 998054P Round Dining Table Glass Top.



Appearing on Inside Front Cover.

381541 SIDE CHAIR

W 20.62 | D 25.81 | H 39 in.
W 52.39 | D 65.56 | H 99.06 cm.

Seat Height: 19 in. | 48.26 cm.
Seat Depth: 19.25 in. | 48.90 cm.
Fabric shown: B981-002
Upholstered seat and inside back panel with top stitching and welt around seat bottom. Upholstered outside back panel with welt. Linear Grey finish.

Appearing on pages 2, 3, 15.



381542 ARM CHAIR

W 23.75 | D 25.69 | H 39 in.
W 60.33 | D 65.25 | H 99.06 cm.

Arm Height: 26.25 in. | 66.68 cm.
Seat Height: 19 in. | 48.26 cm.
Seat Depth: 19.25 in. | 48.90 cm.
Fabric shown: B981-002
Upholstered seat and inside back panel with top stitching and welt around seat bottom. Upholstered outside back panel with welt. Linear Grey finish.

Appearing on pages 2, 3, 15.



381565 SIDE CHAIR

W 23 | D 25.13 | H 39.38 in.
W 58.42 | D 63.82 | H 100.01 cm.

Seat Height: 19 in. | 48.26 cm.
Seat Depth: 19 in. | 48.26 cm.
Fabric shown: B981-002
Upholstered seat and inside back with top stitching and welt around seat bottom. Upholstered outside back with welt. Linear Grey finish.

Appearing on pages Inside Front Cover, 14.



381566 ARM CHAIR

W 23 | D 25.13 | H 39.38 in.
W 58.42 | D 63.82 | H 100.01 cm.

Arm Height: 24.38 in. | 61.91 cm.
Seat Height: 19 in. | 48.26 cm.
Seat Depth: 18.75 in. | 47.63 cm.
Fabric shown: B981-002
Upholstered seat and inside back with top stitching and welt around seat bottom. Upholstered outside back with welt. Linear Grey finish.

Appearing on Inside Front Cover.



381134 BUFFET

W 78.44 | D 19 | H 32 in.
W 199.23 | D 48.26 | H 81.28 cm.

Poplar solids and engineered faux anigre veneers. Linear Grey finish on case with Linear White finish on end panels. Four doors with cast shaped overlays in White Linen finish with soft/self-closing hinges. Behind end doors is one adjustable/removable shelf. Behind paired center doors are two drawers and two open compartments. Top drawer has silverware insert. Second drawer has wrapped pad. Adjustable glides. Anti-tip kit.

Appearing on page 15.



381H09, 381FR09 PANEL BED (KING)

Overall: W 80.25 | D 88.13 | H 76 in.
Overall: W 203.84 | D 223.84 | H 193.04 cm.

Fabric shown: B539-000
Slat Height: 7.5 in. | 19.05 cm.

Engineered faux anigre veneers in Linear Grey finish. Wood-framed headboard with four upholstered, inset horizontal panels - no welt. Wood-framed footboard with upholstered panel - no welt. Wood side rails. Three slat support system with adjustable center supports. Headboard cannot be used alone.



Appearing on pages 12, 13.

Also available:
381H07, 381FR07 PANEL BED (QUEEN)
Overall: W 64.25 | D 88.13 | H 72 in.
Overall: W 163.20 | D 223.84 | H 182.88 cm.

381H66, 381FR66 PANEL BED (KING)

Overall: W 82.88 | D 92.38 | H 64 in.
Overall: W 210.50 | D 234.63 | H 162.56 cm.

Fabric shown: B981-002
Slat Height: 10.75 in. | 27.31 cm.

Engineered faux anigre veneers in Linear Grey finish. Wood-framed, winged headboard with six upholstered panels - no welt. Wood footboard and side rails. Three slat support system with adjustable center supports. Headboard cannot be used alone.



Appearing on pages Cover, Back Cover, 8, 9, 14.

Also available:
381H64, 381FR64 PANEL BED (QUEEN)
Overall: W 66.88 | D 92.38 | H 64 in.
Overall: W 169.86 | D 234.63 | H 162.56 cm.

381050 DRESSER

W 66 | D 20 | H 37 in.
W 167.64 | D 50.80 | H 93.98 cm.

Poplar solids and engineered faux anigre veneers. Linear White finish on case with Linear Grey finish on base and legs. Seven drawers with fancy face drawer fronts. Center support leg. Adjustable glides. Anti-tip kit.
Note: Dresser is bored for optional 381322 mirror support attachment.

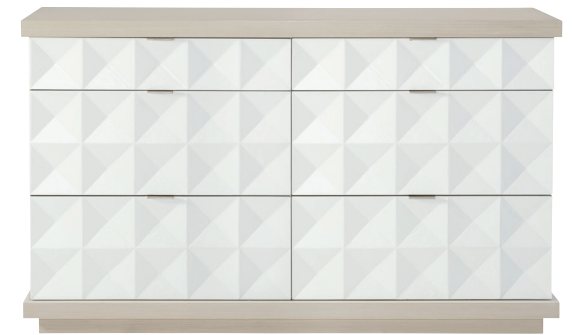


Appearing on pages 9, 11.

381056 DRESSER

W 65.56 | D 19 | H 38.50 in.
W 166.53 | D 48.26 | H 97.79 cm.

Poplar solids and engineered faux anigre veneers. Linear Grey finish on top, frame and base. Linear White finish on end panels. Six drawers with cast shaped overlays on drawer fronts in White Linen finish. Adjustable glides. Anti-tip kit.
Note: Dresser is bored for optional 381322 mirror support attachment.



Appearing on pages 13, 14.

381119 TALL DRAWER CHEST

W 38 | D 19 | H 53.75 in.
W 96.52 | D 48.26 | H 136.53 cm.

Poplar solids and engineered faux anigre veneers. Linear White finish on case and fancy face drawer fronts. Five drawers. Linear Grey finish on bottom case border and plinth base. Anti-tip kit. Adjustable glides.



381322 MIRROR

W 52 | D 1.50 | H 36 in.
W 132.08 | D 3.81 | H 91.44 cm.

Poplar solids and engineered faux anigre veneer wood frame. Mirrored glass with 1" bevel. Can be hung vertically or horizontally. Linear Grey finish.
Note: Due to weight, must be hung on stud.
Note: Mirror supports included for optional use with 381050 and 381056 dressers.



Appearing on pages 13, 14, 15.

381213 NIGHTSTAND

W 36 | D 21 | H 30 in.
W 91.44 | D 53.34 | H 76.20 cm.

Engineered faux anigre veneers. Two drawers with fancy face drawer fronts. Adjustable glides. Anti-tip kit. Linear White finish.
Note: Back of case is finished.

Appearing on pages Cover, Back Cover, 8.



381506 BENCH

W 28 | D 18 | H 19 in.
W 71.12 | D 45.72 | H 48.26 cm.

Fabric shown: B539-000
Upholstered box seat with top stitching - no welt. Solid stainless steel frame with curved, open end panels in Brushed Silver finish. Adjustable glides.

Appearing on pages 12, 13.



381228 NIGHTSTAND

W 26 | D 19 | H 29.75 in.
W 66.04 | D 48.26 | H 75.57 cm.

Poplar solids and engineered faux anigre veneers. Linear White finish on case and fancy face drawer fronts. Linear Grey finish on base and legs. Three drawers. Adjustable glides. Anti-tip kit.



381508 BENCH

W 56 | D 18 | H 18 in.
W 142.24 | D 45.72 | H 45.72 cm.

Fabric shown: B981-002
Upholstered seat with top stitching and bottom welt. Fancy face curved ends of poplar solids and engineered faux anigre veneers. Open in center of base. Adjustable glides. Linear White finish.

Appearing on pages Cover, Back Cover, 8, 9, 14.



381229 NIGHTSTAND

W 34 | D 19 | H 29.75 in.
W 86.36 | D 48.26 | H 75.57 cm.

Poplar solids and engineered faux anigre veneers. Linear White finish on case and fancy face drawer fronts. Linear Grey finish on base and legs. Three drawers. Adjustable glides. Anti-tip kit.

Appearing on pages 9, 10, 14.



381011 COCKTAIL TABLE

W 40 | D 40 | H 17 in.
W 101.60 | D 101.60 | H 43.18 cm.

Poplar solids and engineered faux anigre veneers. Fancy face top with Linear White finish on top and sides. Plinth base in Linear Grey finish. Heavy duty, non-marring ball casters.

Appearing on pages 4, 5.



381236 NIGHTSTAND

W 33.63 | D 19 | H 32.13 in.
W 85.41 | D 48.26 | H 81.60 cm.

Poplar solids and engineered faux anigre veneers. Linear Grey finish on case with Linear White finish on end panels. Three drawers with cast shaped overlay drawer fronts in White Linen finish. Plinth base. Adjustable glides. Anti-tip kit.

Appearing on pages 12, 13.



381021 COCKTAIL TABLE

W 54 | D 31 | H 18 in.
W 137.16 | D 78.74 | H 45.72 cm.

Poplar solids and engineered faux anigre veneers. Fancy face top with Linear White finish on top and end panels. One shelf in Linear White finish - not fancy face. Linear Grey finish on side borders of top and shelf - side and bottom borders of end panels. Adjustable glides.

Appearing on page 6.



381122 ACCENT TABLE

W 16 | D 24 | H 24 in.
W 40.64 | D 40.64 | H 60.96 cm.

Maple veneer top in White Linen finish. Engineered faux anigre veneer base in Linear Grey finish. Adjustable glides.

Appearing on pages 4, 5.



381125 SIDE TABLE

W 24 | D 24 | H 24 in.
W 60.96 | D 60.96 | H 60.96 cm.

Poplar solids and engineered faux anigre veneers. Tubular stainless steel framed top in Brushed Silver finish with inset tempered glass top. Two fancy face, curved end panels in Linear White finish. Fancy face bottom shelf and base in Linear Grey finish. Open area between panels - front to back. Adjustable glides.

Appearing on page 15.



381127 SIDE TABLE

W 28 | D 28 | H 26 in.
W 71.12 | D 71.12 | H 66.04 cm.

Poplar solids and engineered faux anigre veneers. Fancy face top and drawer fronts. Three drawers. Plinth base. Adjustable glides. Linear White finish.
Note: Back of case is finished.

Appearing on pages 6, 7, 15.



381910 CONSOLE TABLE

W 64 | D 16 | H 30 in.
W 162.56 | D 40.64 | H 76.20 cm.

Poplar solids and engineered faux anigre veneers. Linear Grey finish on case and Linear White finish on top. Fancy face end panels. One removable, tempered glass shelf and one fixed wood bottom shelf. Adjustable glides.



381870 ENTERTAINMENT CONSOLE

W 72 | D 18 | H 31 in.
W 182.88 | D 45.72 | H 78.74 cm.

Poplar solids and engineered faux anigre veneers in Linear Grey finish. Three open front compartments located above and below doors (6 compartments total), each with one covered grommet hole. Four fancy face doors in Linear White finish. Behind end doors is one adjustable/removable shelf and ventilation holes in back panel. Behind center paired doors is an open compartment and one drawer with wrapped pad. Plinth base. Adjustable glides. Anti-tip kit.
Note: Designed to support TV and/or other media.

Appearing on pages Inside Front Cover, 14.



D13514 DESK

W 64 | D 24 | H 30 in.
W 162.56 | D 60.96 | H 76.20 cm.

Engineered veneer top in Linear Grey with metal grommet hole with cover. Three drawers. Center drawer has drop front. Two plug receptacles and two USB ports. Stainless steel base with center back stretcher in Brushed Silver.



D13914 CONSOLE

W 56 | D 20 | H 30 in.
W 142.24 | D 50.80 | H 76.20 cm.

Engineered veneer top and aprons in Linear Grey. Stainless steel base with center back stretcher in Brushed Silver.



D11004 OFFICE CHAIR

W 23.50 | D 24.69 | H 35 in.
W 59.69 | D 62.71 | H 88.90 cm.

Fabric Shown: B578
Upholstered box seat and back with welt. Frame in Linear Grey. Polished stainless steel swivel base with tilt and adjustable height functions.



D13504 FILE CABINET

W 18 | D 20 | H 24.50 in.
W 45.72 | D 50.80 | H 62.23 cm.

Three drawers. Bottom drawer will accommodate both letter and legal size files. Engineered veneer in Linear Grey. Finished back.



D13505 FILE CABINET

W 18 | D 20 | H 24.50 in.
W 45.72 | D 50.80 | H 62.23 cm.

Two drawers. Bottom drawer will accommodate both letter and legal size files. Engineered veneer in Linear Grey. Finished back.



D13810 ETAGERE

W 28 | D 14 | H 74 in.
W 71.12 | D 35.56 | H 187.96 cm.

Stainless steel frame in Brushed Silver. Five wood shelves and veneered center back panel in Linear Grey.



FINISHES

Axiom's engineered faux anigre veneers come in two silky yet low-sheen finishes: Linear White and Linear Grey. A hand-applied plaster in a White Linen finish serves as the perfect complement. Rounding out the look is a unique mix of materials that includes plaster, acrylic and metal, which only add to Axiom's glamorous appeal.



Linear White



Linear Grey



White Linen



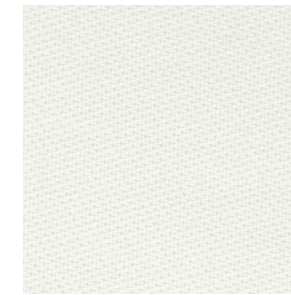
Brushed Silver

FABRICS

The Linear White and Linear Grey finishes, along with Brushed Silver accents and hardware, demand subtle complementary colors. The whites and greys found on fabrics keep the look clean and offer an ideal balance, letting the Axiom collection's uncommon combination of materials and finishes take center stage.



B981-002



B539-000

ADDITIONAL IMAGES FEATURED

COVER: 381H66/381FR66 Panel Bed, 381213 Nightstand, 381508 Bench

INSIDE FRONT COVER: 381773/998E60 Dining Table, 381565 Side Chairs, 381566 Arm Chair, 381870 Entertainment Console

PAGES 2-3: 381222 Dining Table, 381541 Side Chairs, 381542 Arm Chairs

PAGES 4-5: 381011 Cocktail Table, 381122 Accent Table, N1623L Naomi Chairs

PAGES 8-9: 381H66/381FR66 Panel Bed, 381213 Nightstand, 381229 Nightstand, 381508 Bench, 381050 Dresser

PAGES 14-15: 381056 Dresser, 381H66/381FR66 Panel Bed, 381229 Nightstand, 381508 Bench, 381565 Side Chair, 381870 Entertainment Console, 381134 Buffet, 381322 Mirror, 381127 Side Table, 381125 Side Table, 381222 Dining Table, 381541 Side Chairs, 381542 Arm Chair

BACK COVER: 381H66/381FR66 Panel Bed, 381213 Nightstand, 381508 Bench, 381229 Nightstand



Many high quality, natural materials, such as wood, veneer, glass, rubber, metal, plastic, cloth and/or stone, are used in our products and may reflect grain, vein or color variations. These variations are inherent in their species and enhance the unique beauty of each piece of furniture. Due to the photographic and printing processes used in the creation of this catalog, the finish and fabric colors displayed may vary from actual finish and fabric colors. Authorized Bernhardt retailers carry a variety of our furniture pieces and collections, so please contact them about the specific products at their location. Bernhardt uses materials and resources sourced globally to ensure a quality product. Specifications subject to change without notice.

Copyright © 2022 Bernhardt Furniture Company. Printed in the USA

