
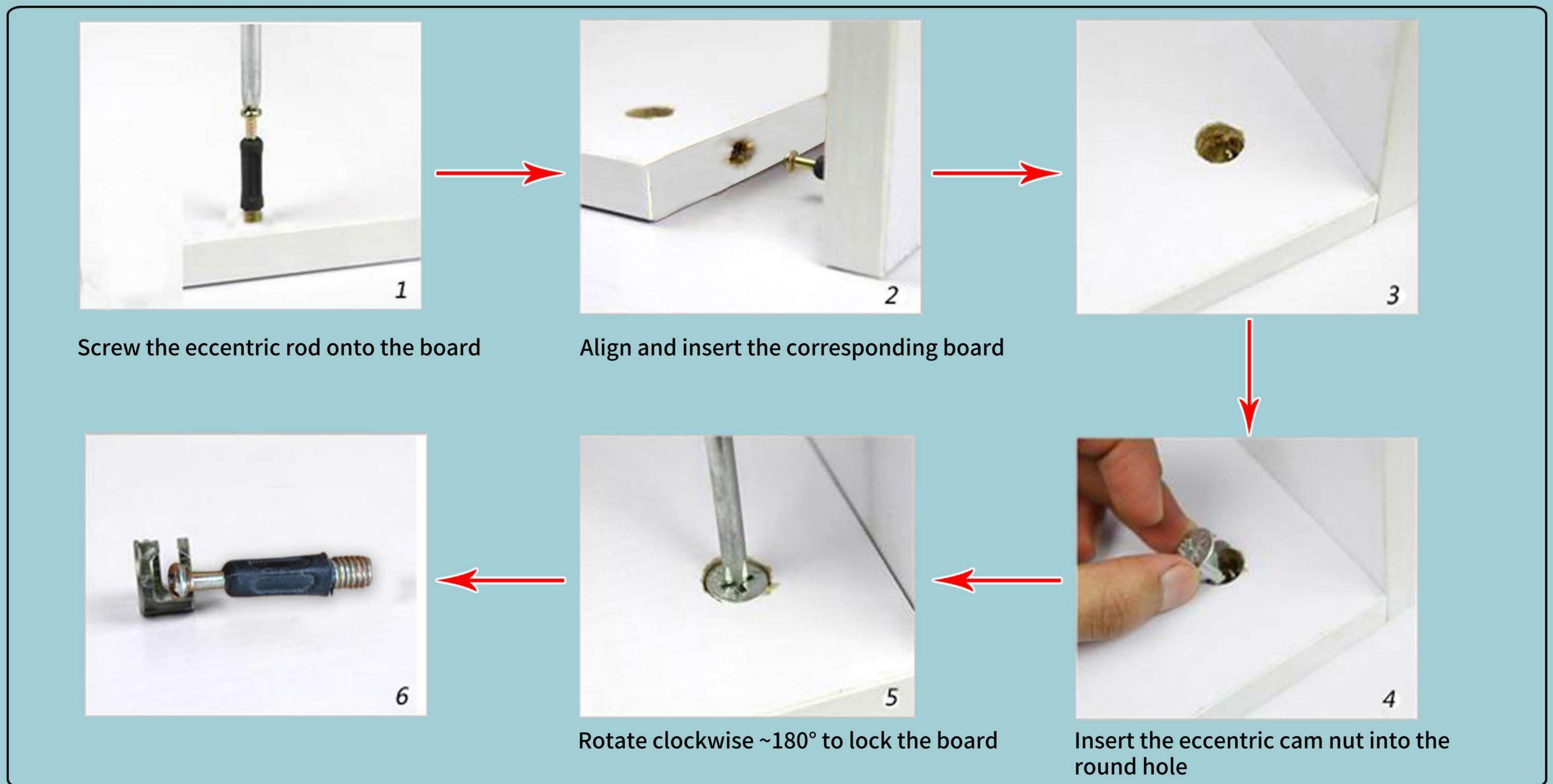


Dressing Table D65 60CM Assembly Diagram

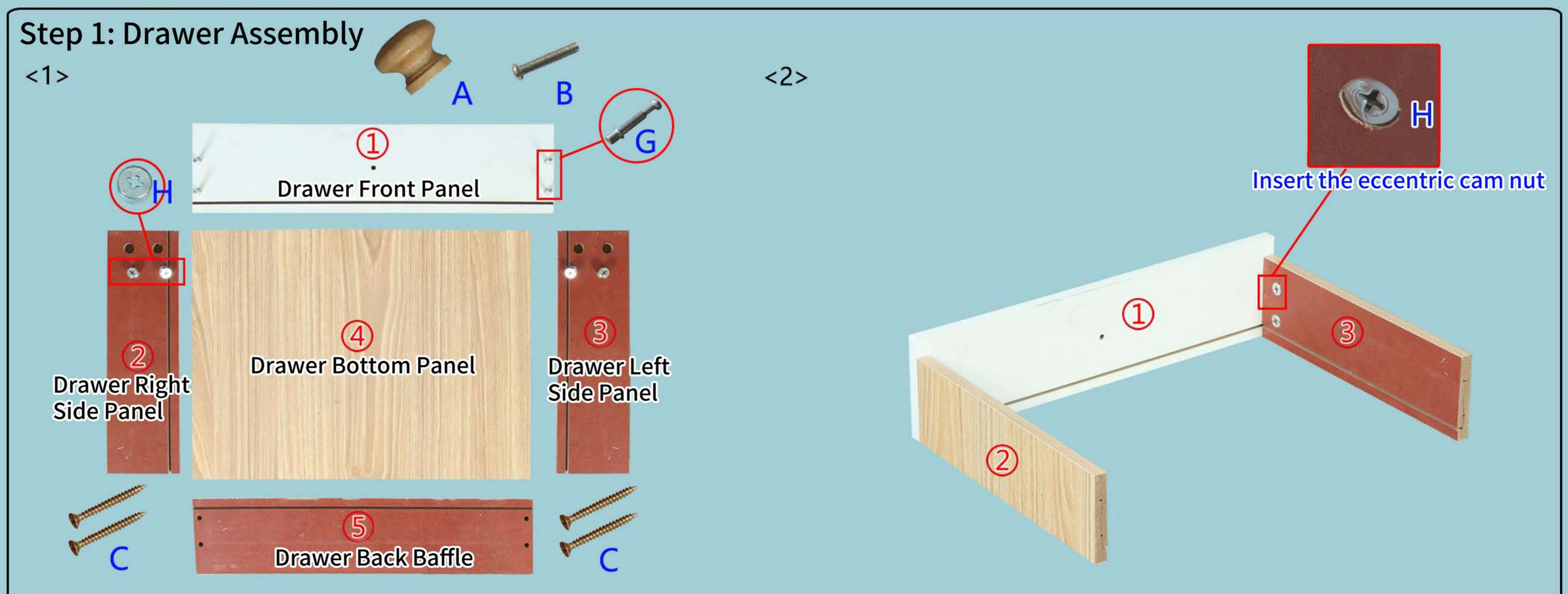
										
Handle	Handle Screw	3.5CM Self-tapping Screw	Hinge	Mini Self-tapping Screw	Spring Pin	Eccentric Screw Rod	Eccentric Cam Nut	Metal Pin	Door Stopper	2CM Flat Head Screw
A*2	B*2	C*22	D*2	E*14	F*1	G*8	H*8	I*1	J*1	K*2

Warm Tip: Tighten screws to 70% during assembly, and fully tighten after all parts are installed!

Eccentric Fitting Installation Principle



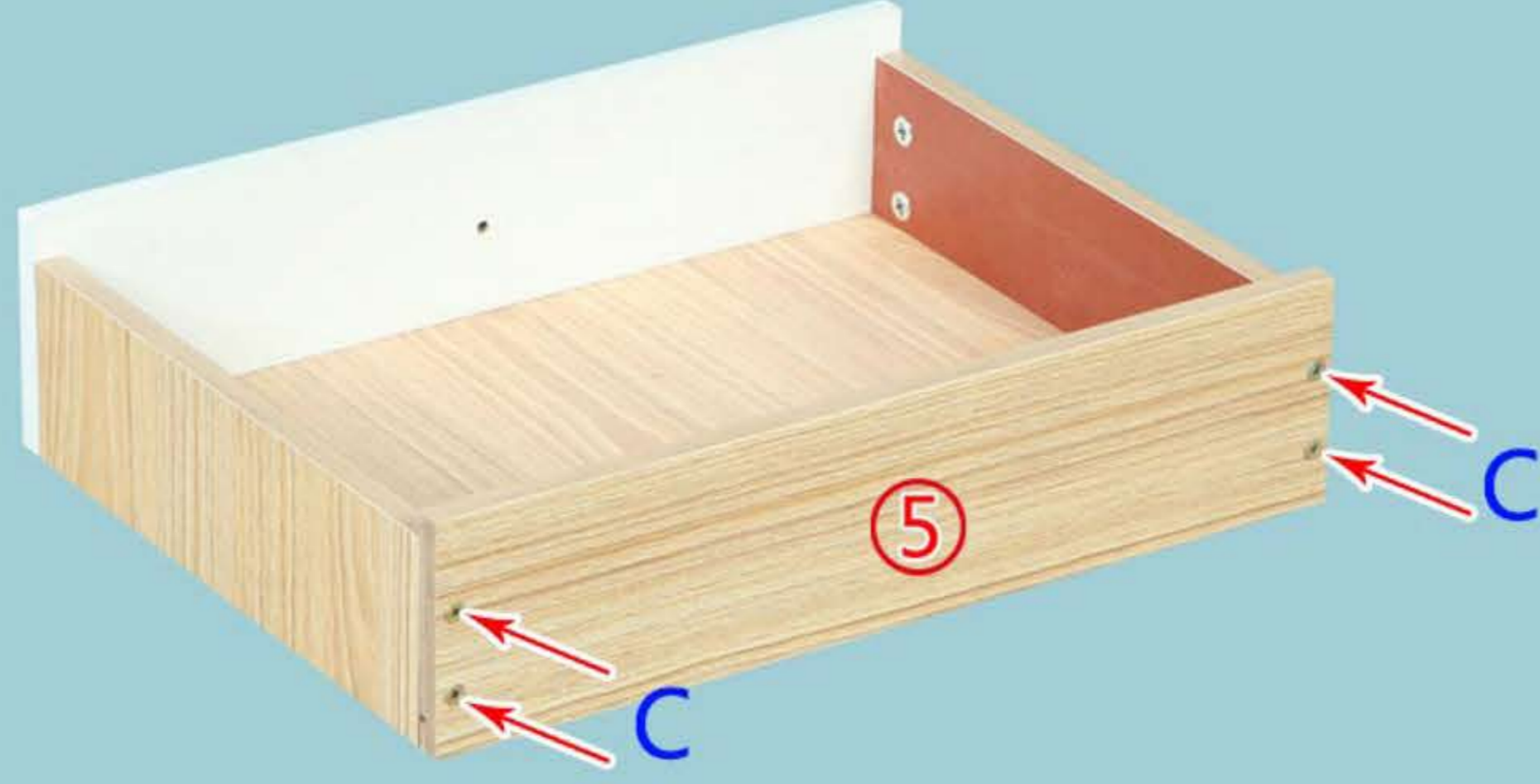
Installation Steps:



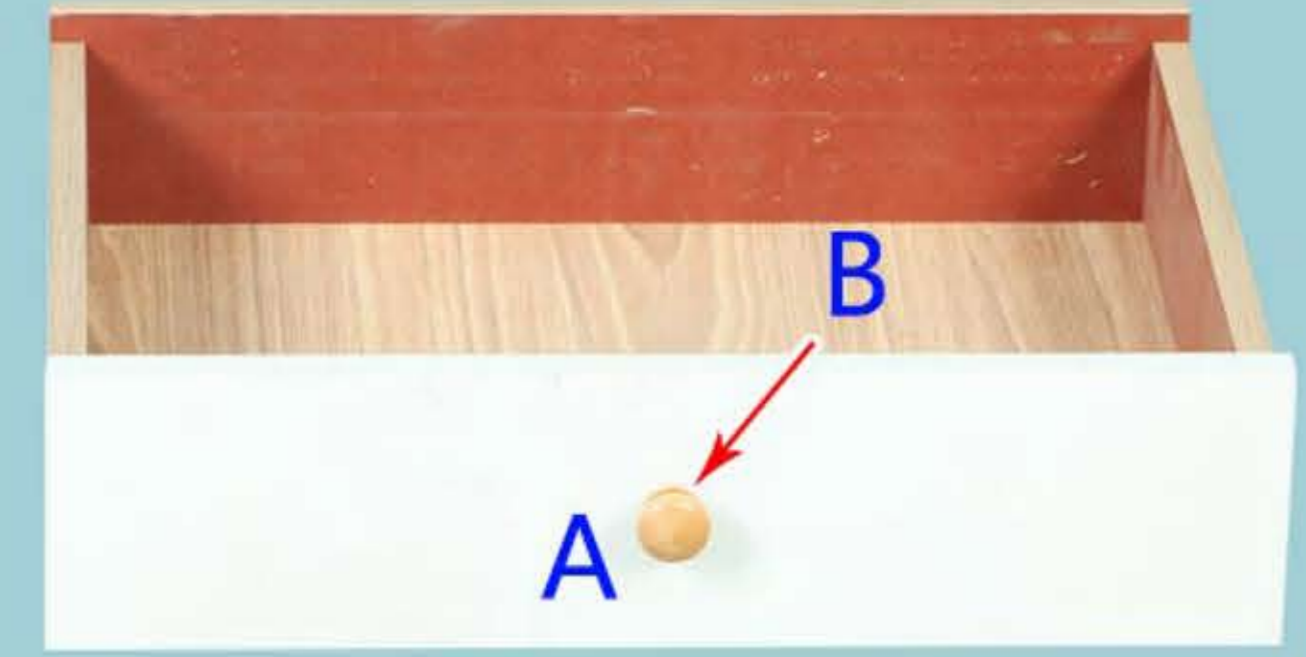
<3> First insert the drawer bottom plate, then rotate the eccentric bolt clockwise to lock the plate



<4>



<5>



Drawer installation completed!

Board name and serial number:



left side panel

⑥



middle vertical plate

⑦



right side panel

⑧



rear panel

⑨



baseplate

⑩



shelf board

⑪



cabinet leg

⑫ x4



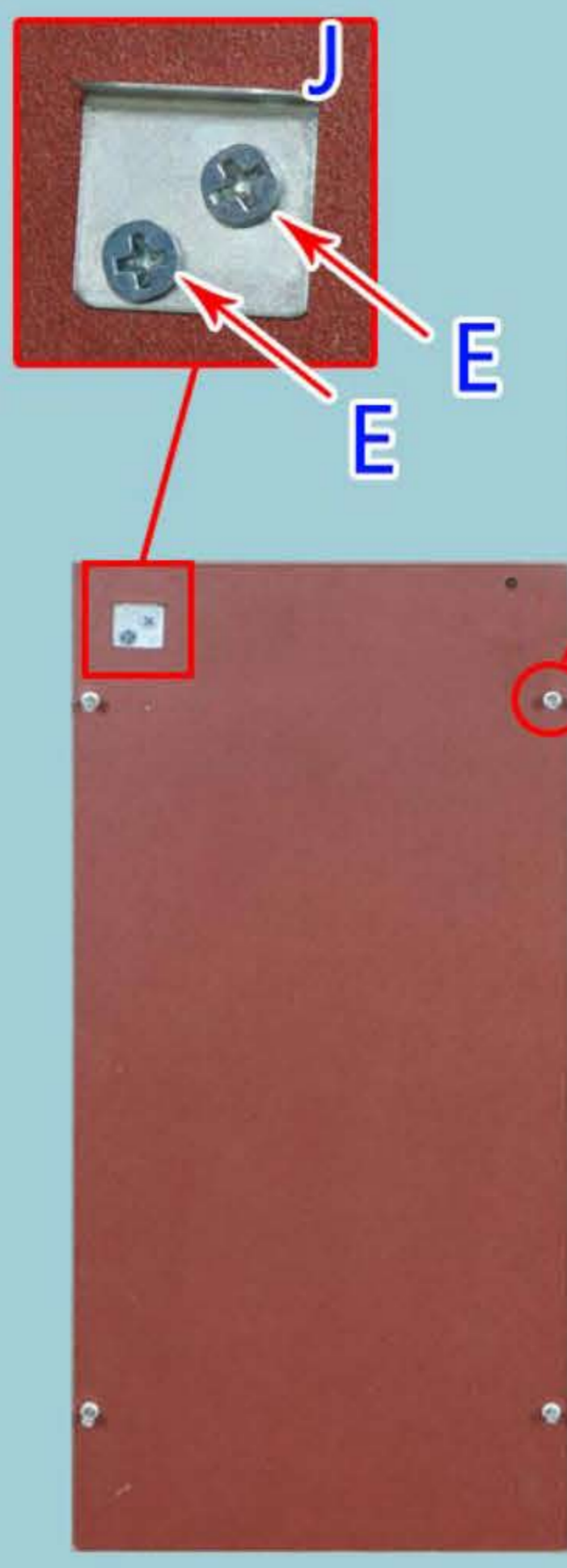
front fender

⑬



fake panel

⑭



cover plate

⑮



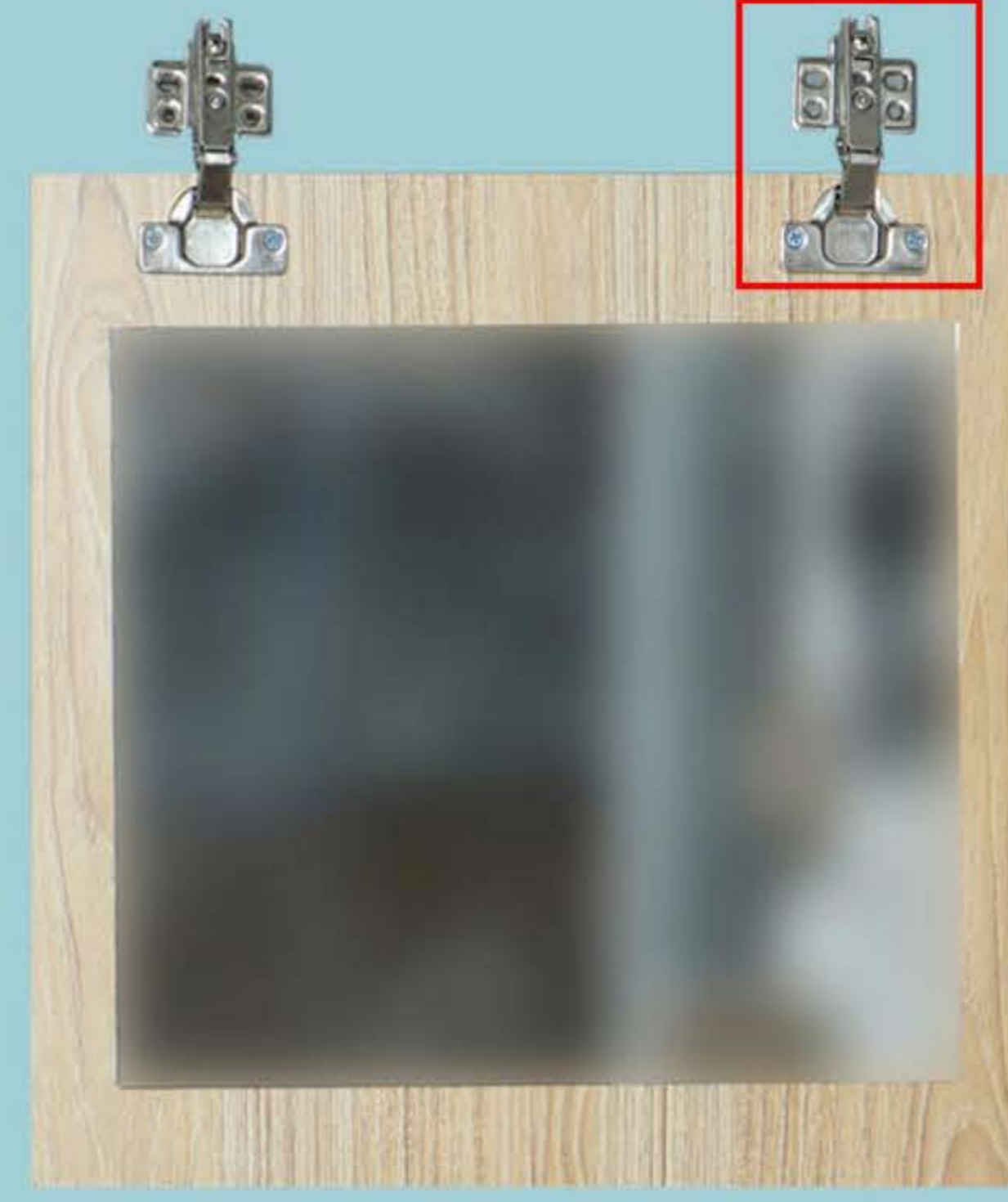
horizontal board

⑯



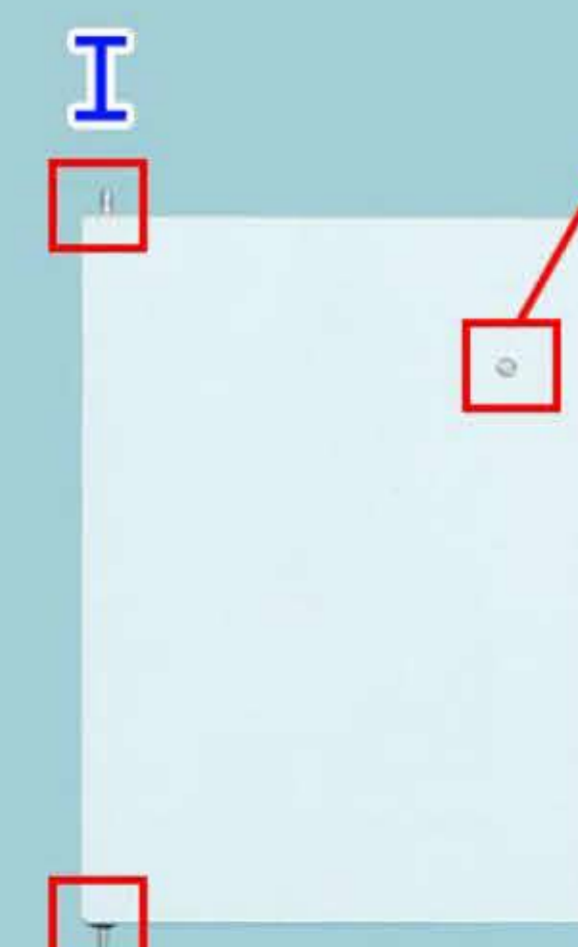
vertical board

⑰



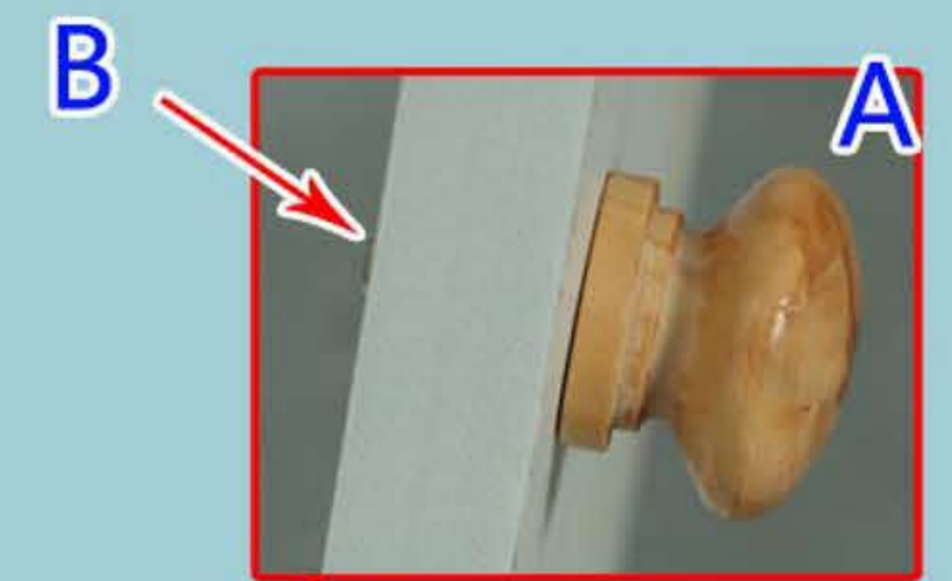
dressing mirror

⑱



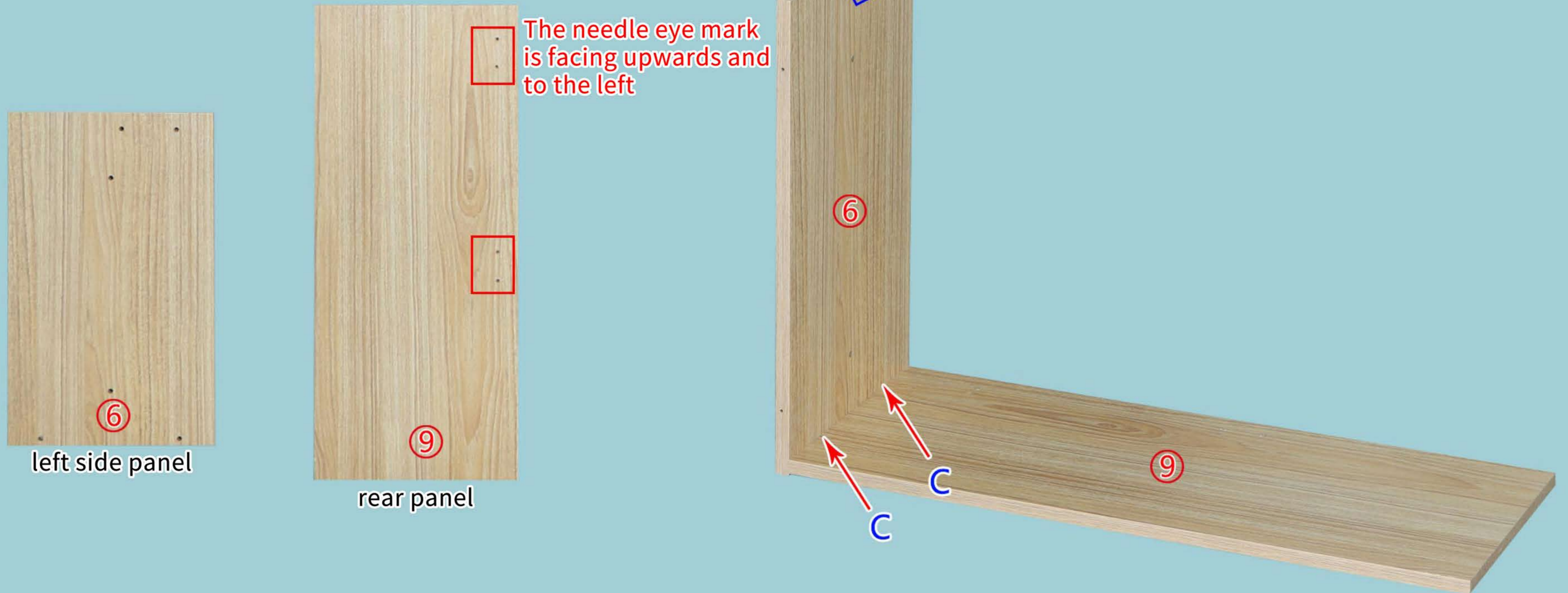
Right door panel

⑲

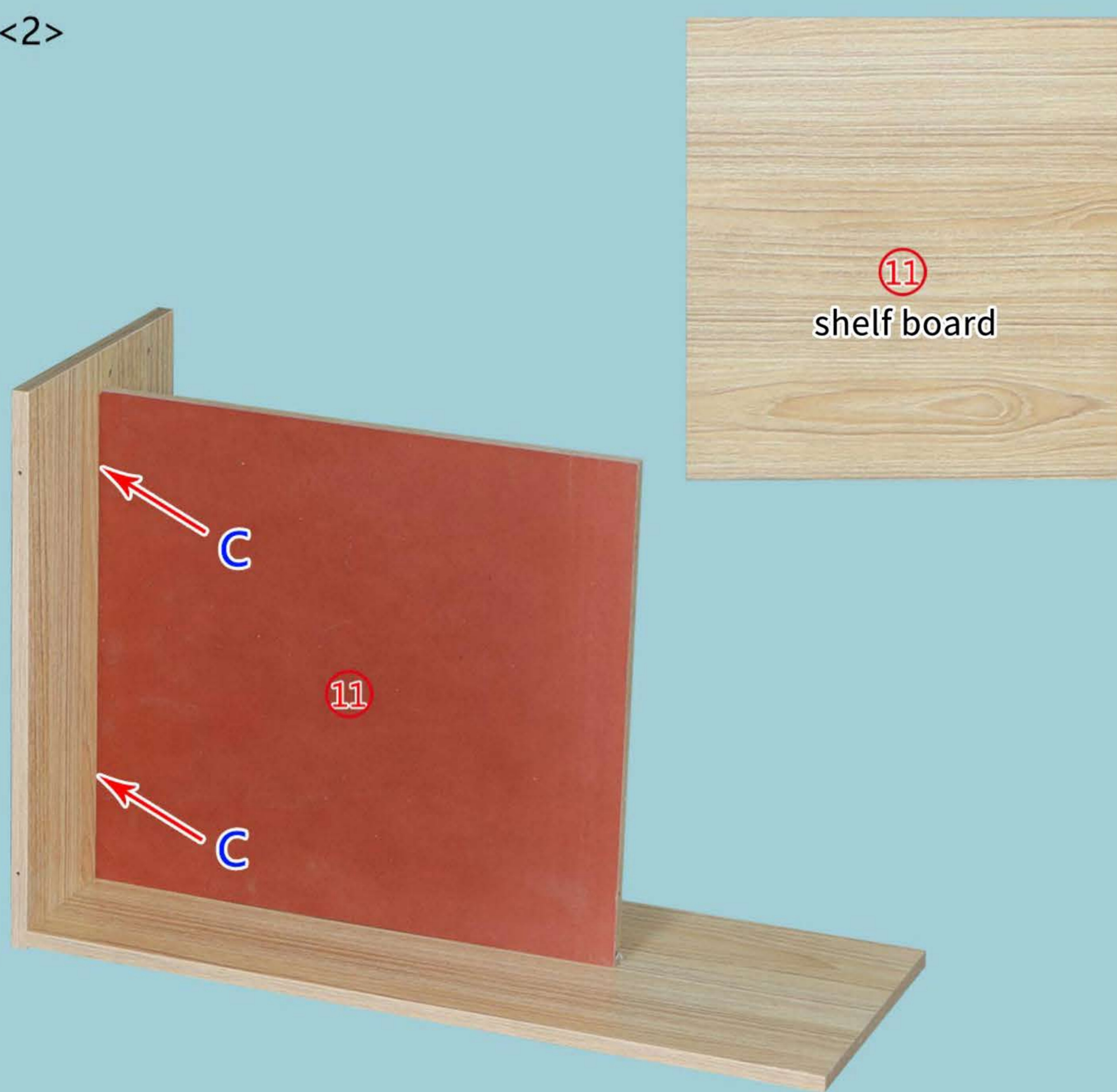


Step 2: Overall Part Installation

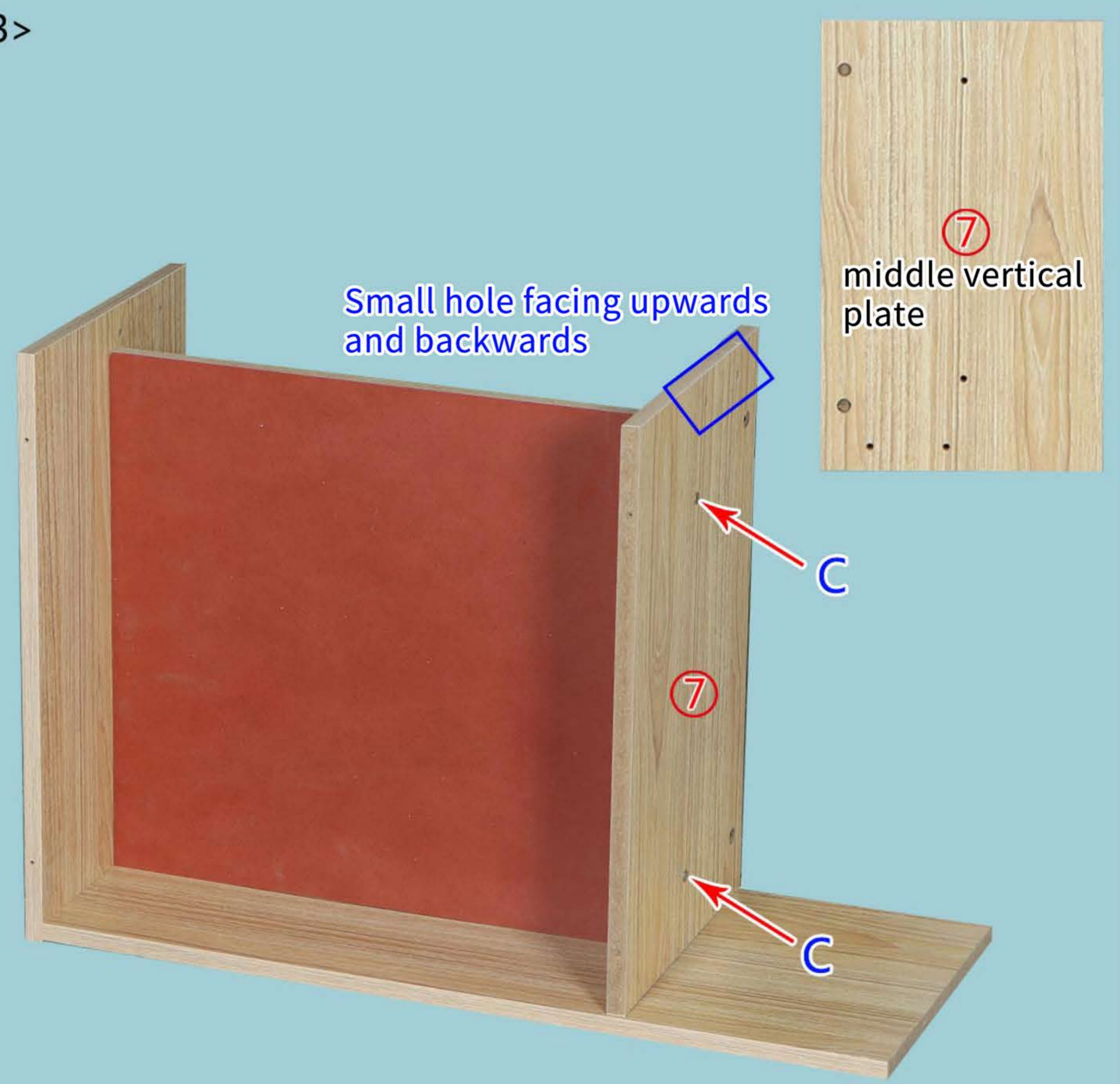
<1>



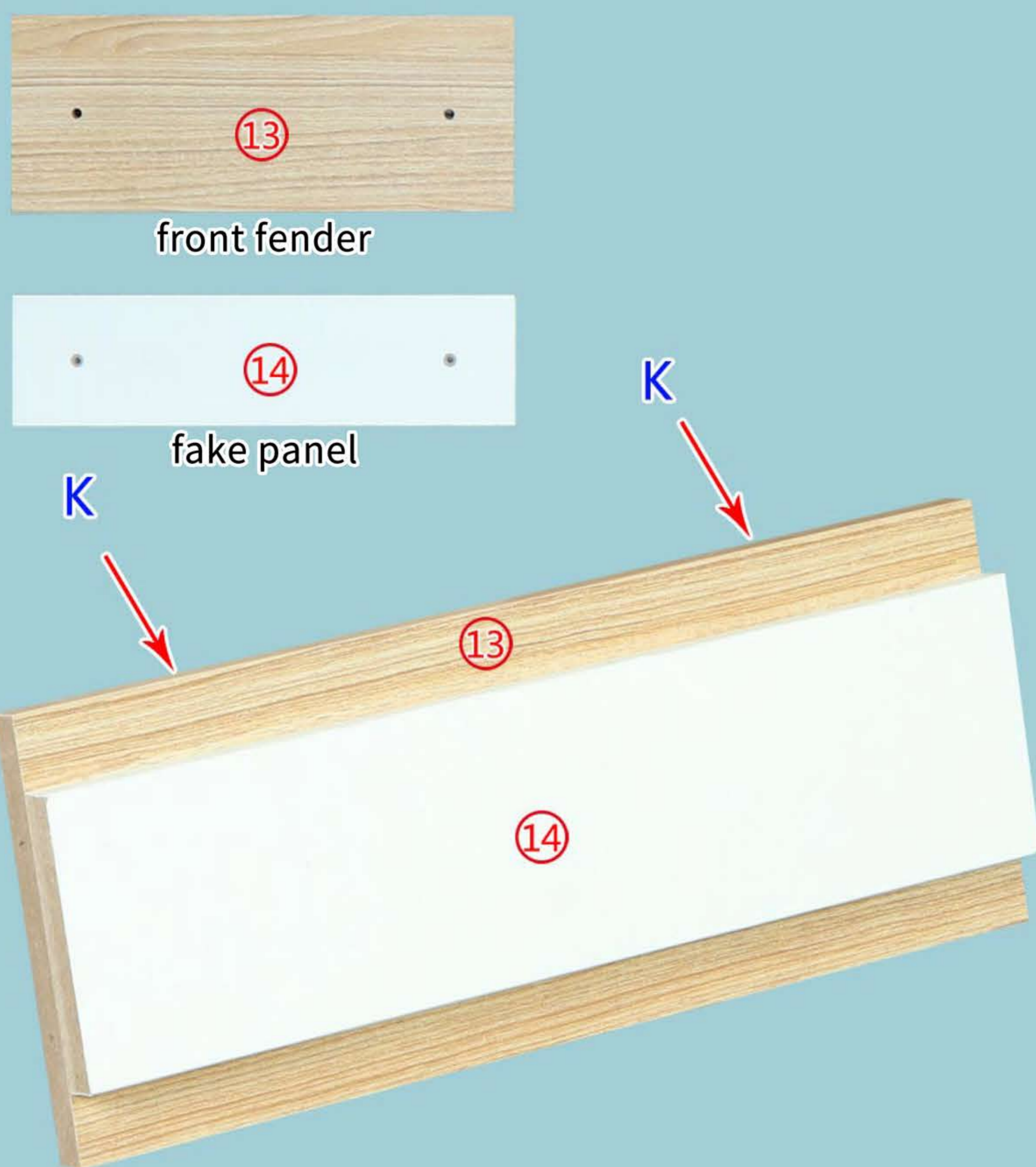
<2>



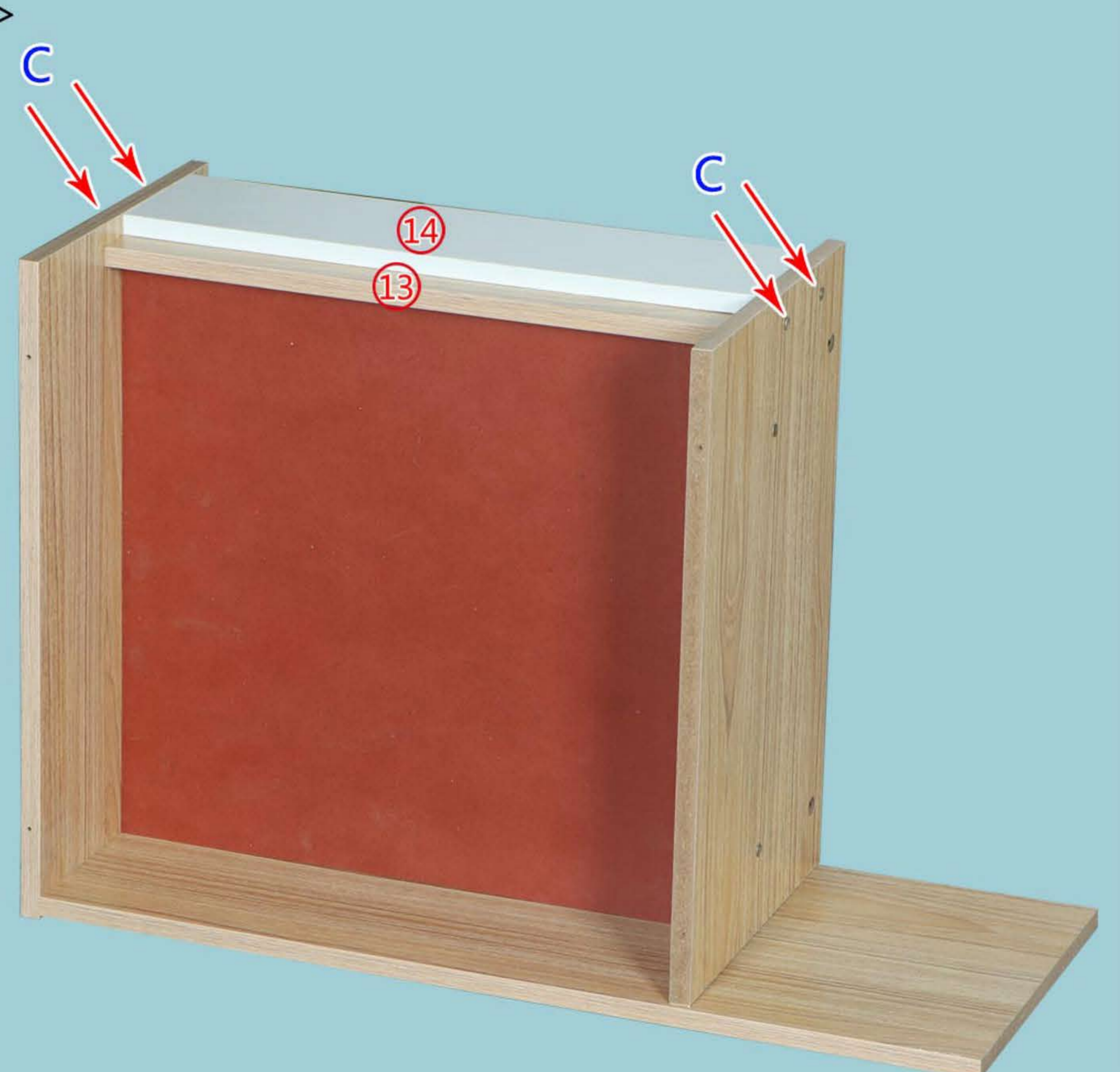
<3>

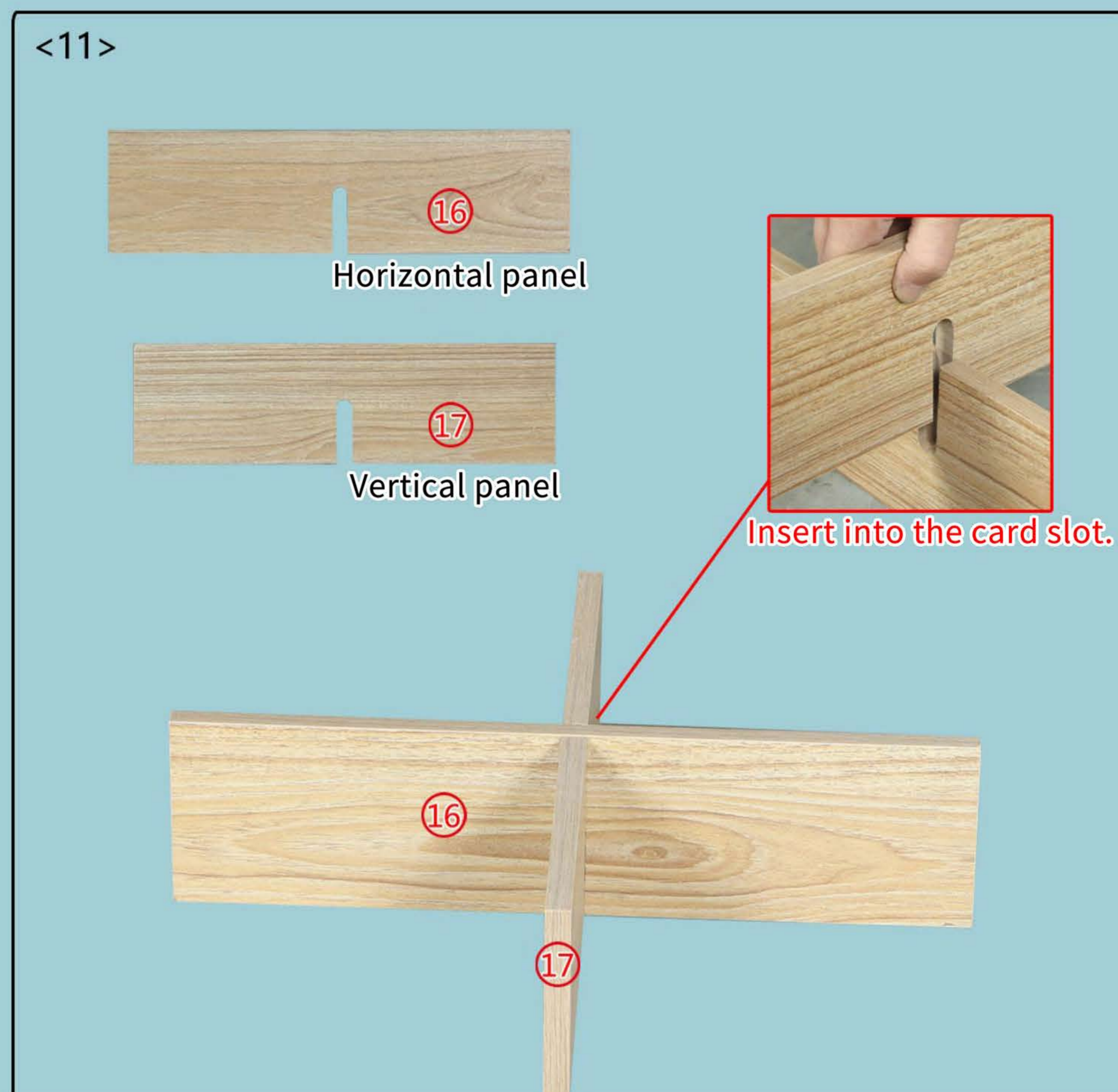
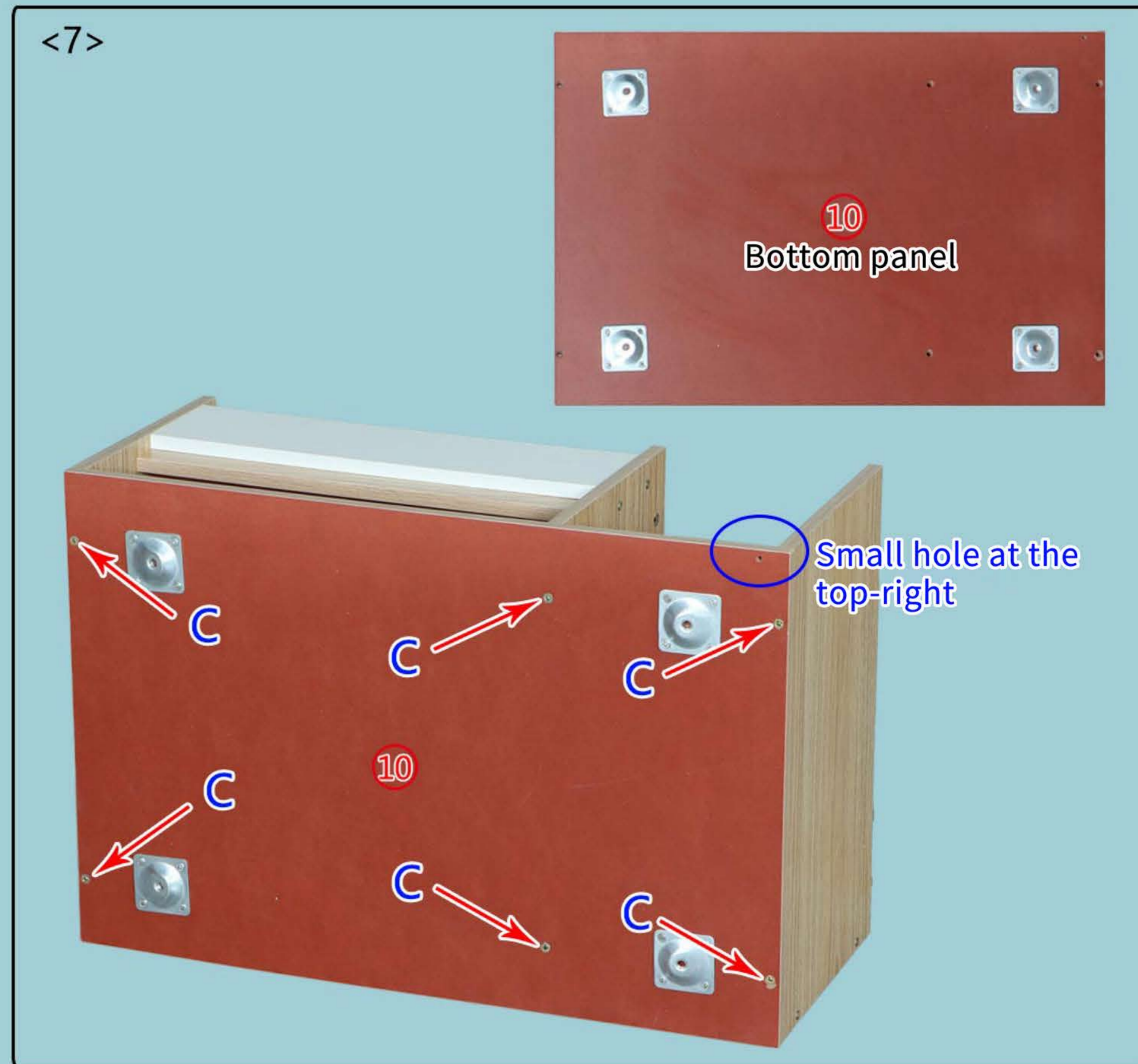
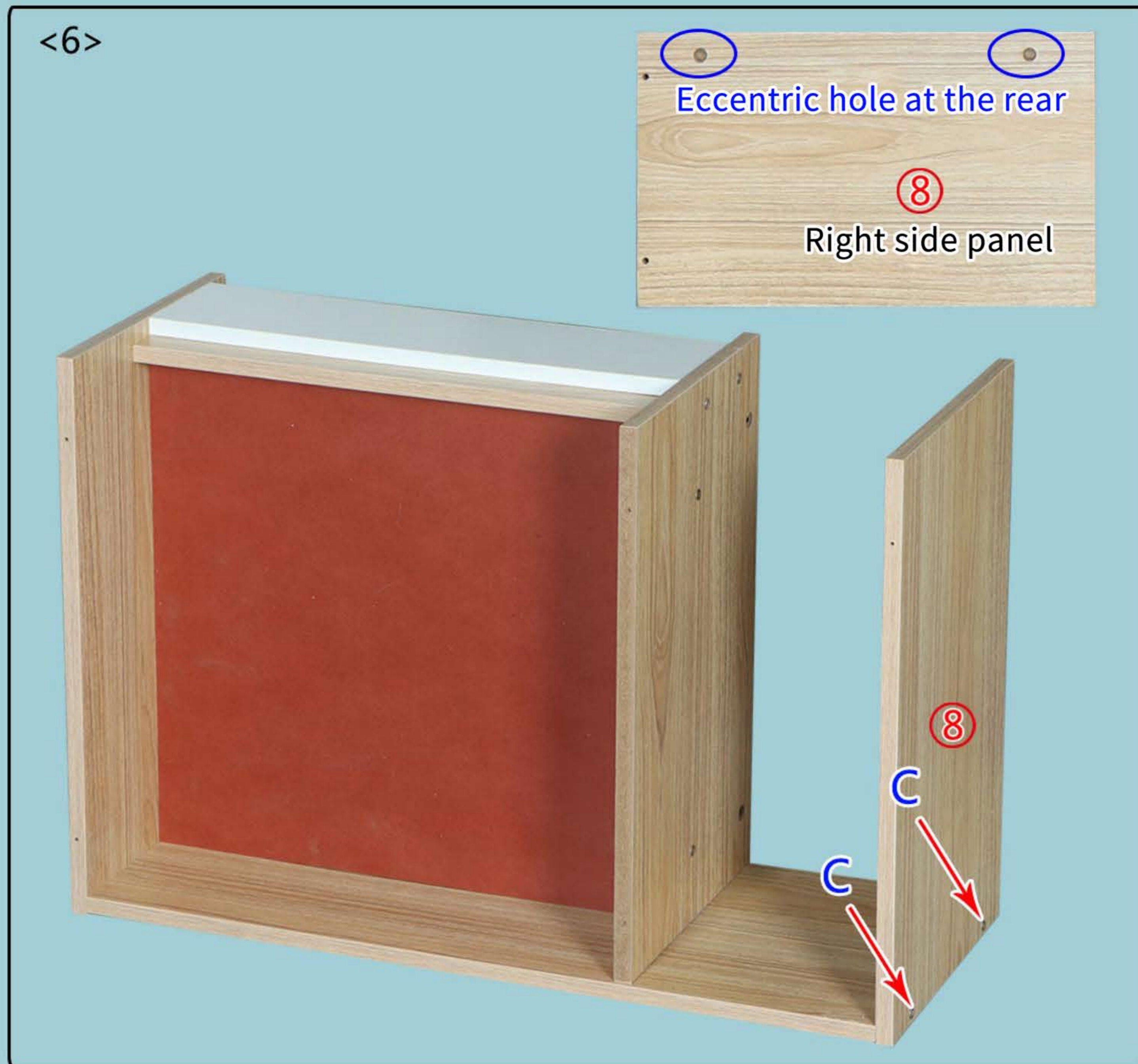


<4>



<5>





<12>Install the assembled components



<13>Slowly push the drawer into place



<14>



Vanity mirror



The hinge installation positions are marked with pinholes on the board. Secure with the smallest self-tapping screws.

First tighten 2 screws, adjust the board to the correct position, then tighten all remaining screws.



FINAL ASSEMBLY COMPLETE!