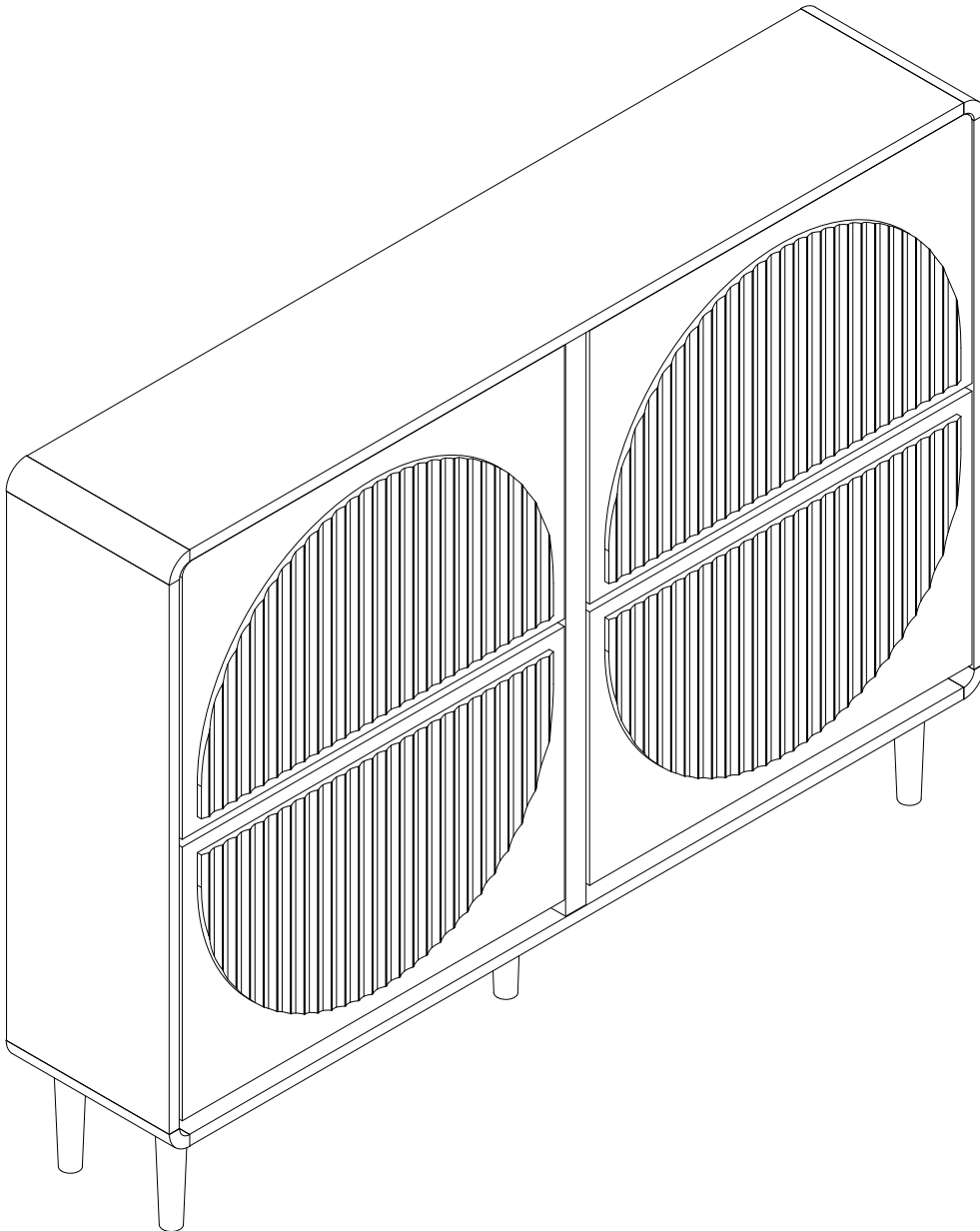


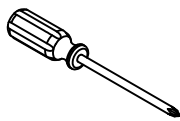
Installation Instruction



Assembling

What you need

- Use the packaging carton as a working surface to prevent product damage during assembly
- Phillips head screwdriver



Weight Limitation

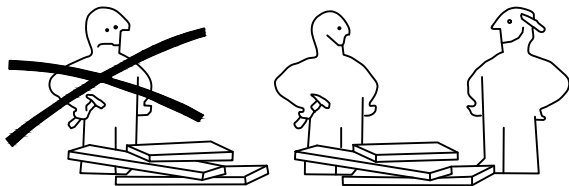


100

lbs table top

| 35

lbs per

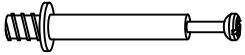


What' included

Code	Description	Qty
A	Cam Bolt M6X35MM	22
B	Cam Lock 15X10MM	22
C	Wooden Dowel M8X30MM	10
D	Screw M4X40MM	6
E	The screw M3.5X14MM	58
F	Inner Shaft	8
G	Stopper	8
H	External Shaft	8
I	The screw M3.5X14MM	20
J	Left Plastic Holder	4
K	Right Plastic Holder	4
L	Adjustable foot pads	1
M	Metal shake handhandle	4
N	Screw M4X10MM	8
O	MATS	4
P	Anchor	2
Q	The metal plate	5
R	Metal connector	2
S	Self-adhesive hole sticker	18

The Hardwares

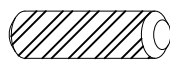
A



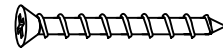
B



C



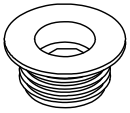
D



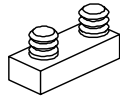
E



F



G



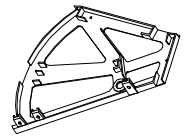
H



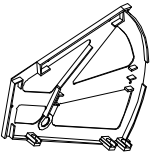
I



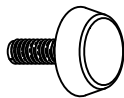
J



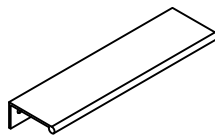
K



L



M



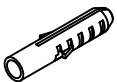
N



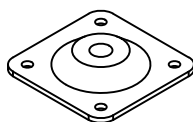
O



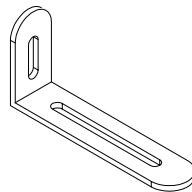
P



Q



R



S



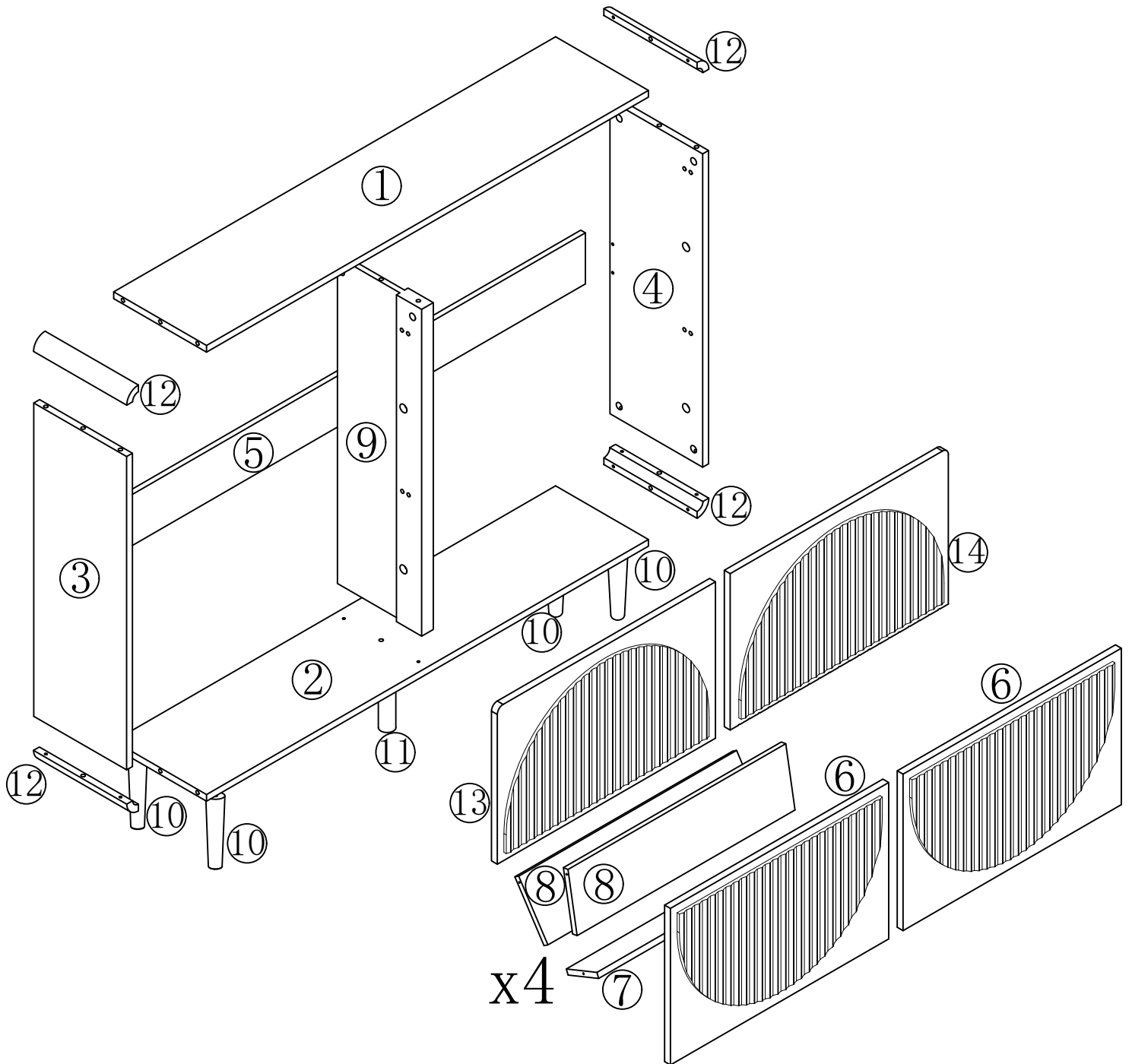
IMPORTANT:

1. Do not tighten bolts / screws completely until all bolts / screws are lined up and inserted into holes.
2. Do not over tighten screws and bolts to avoid stripping.
3. Please use hand tools to assemble this product, you can also use power tools (please use power tools carefully).

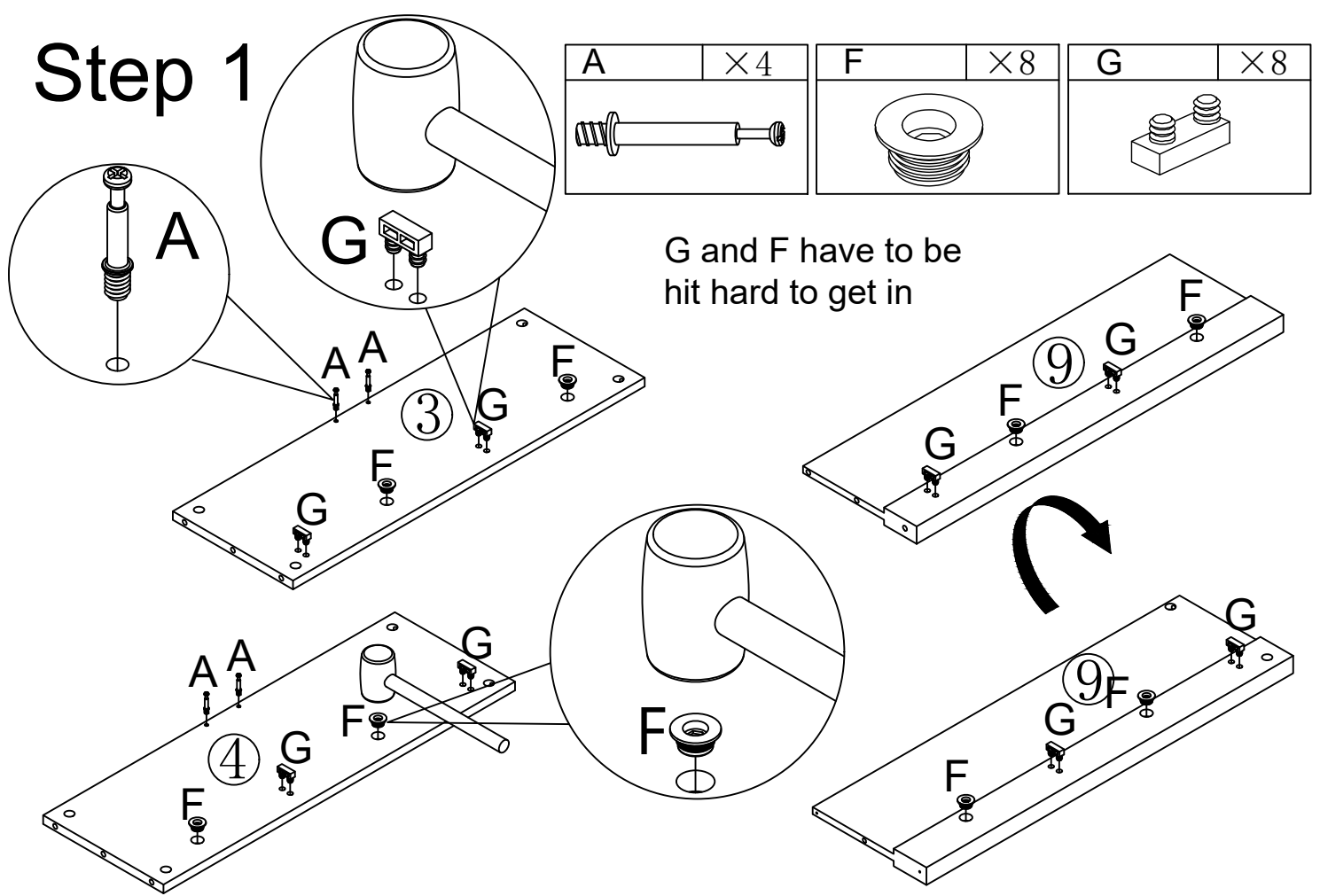
Included Accessories

Code	Description	Qty
1	Cabinet Top	1
2	Bottom Panel	1
3	Left Side Panel	1
4	Right Side Panel	1
5	Back stiffener	1
6	Bottom door panel	2
7	Inner lamella	4
8	Large inner plate	8
9	Middle Division Panel	1
10	Solid wood feet	4
11	Medium solid wood feet	1
12	Arc connecting plate	4
13	Top left side door	1
14	Upper left side door	1

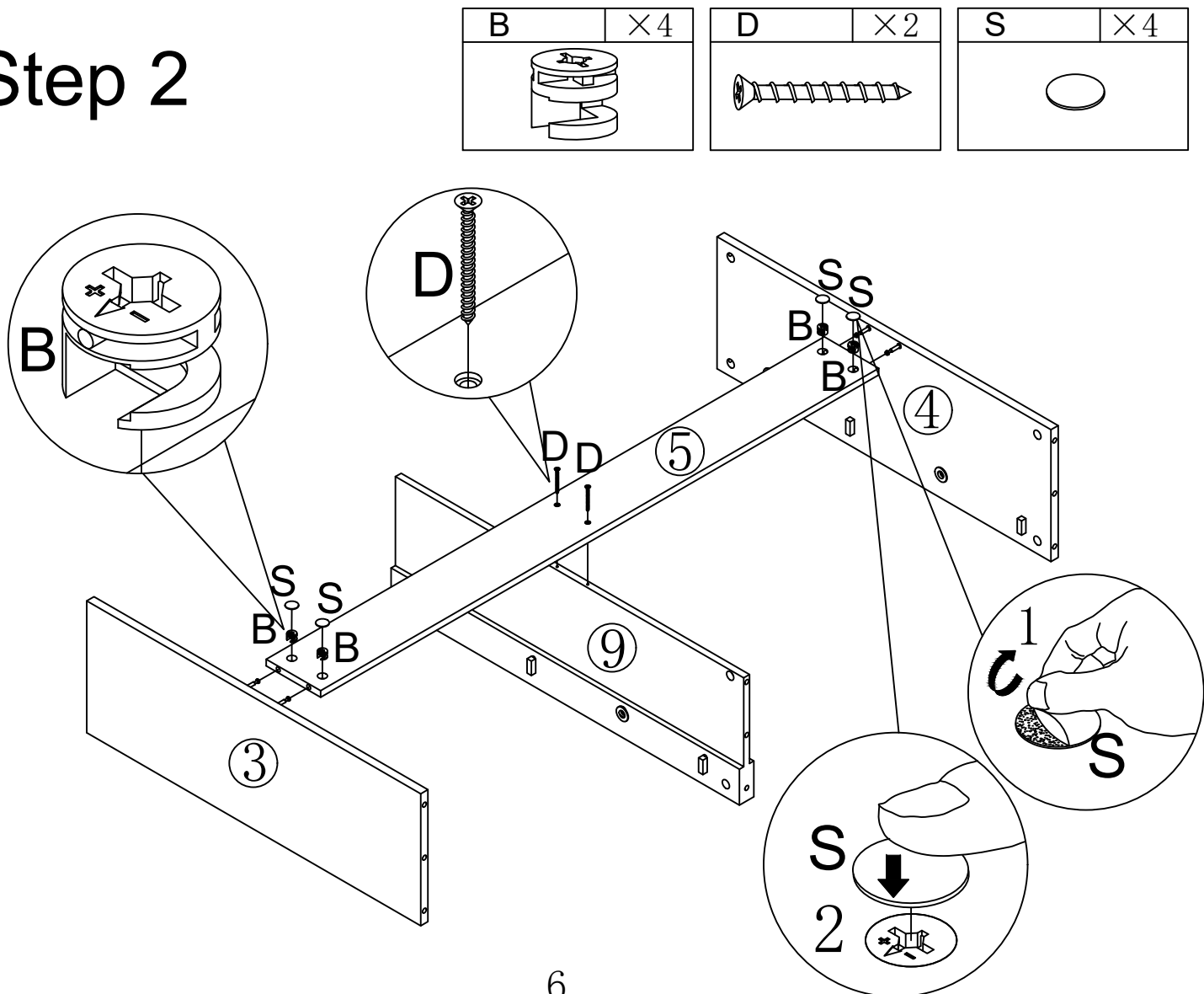
The Accessories



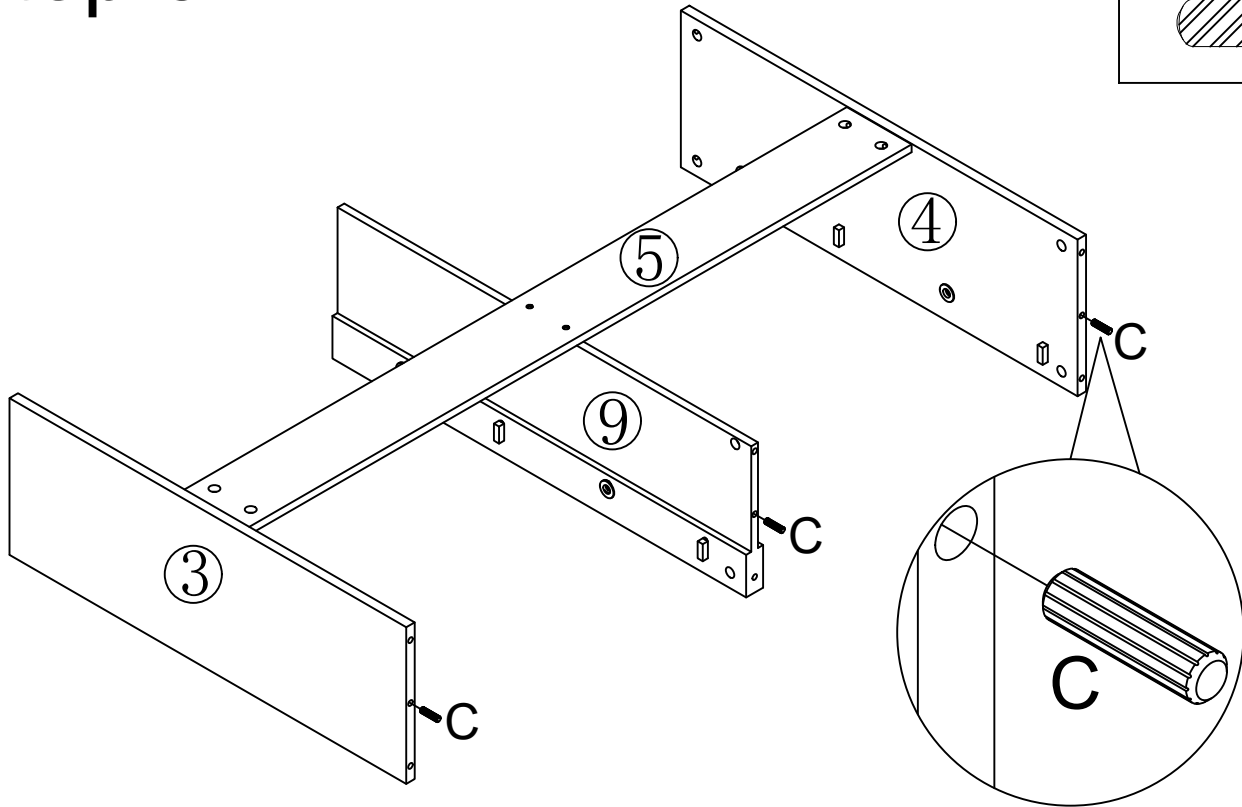
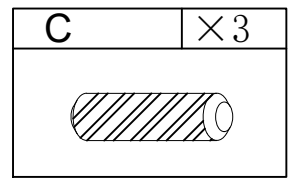
Step 1



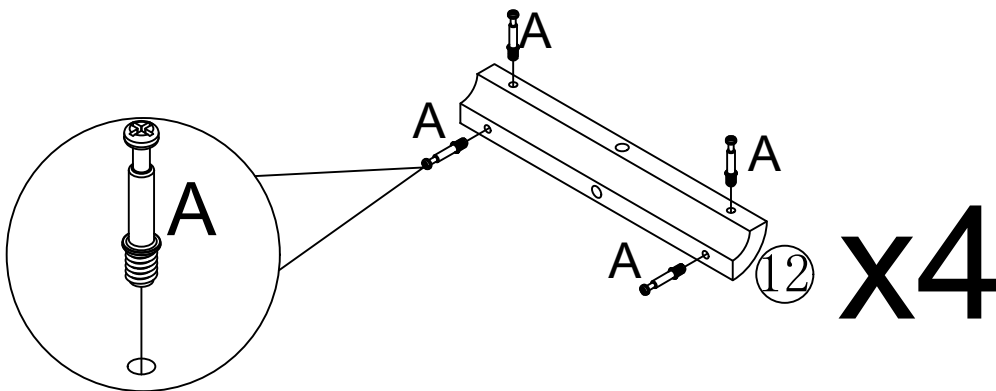
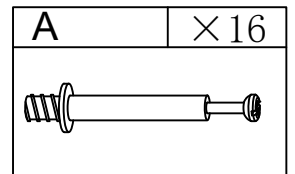
Step 2



Step 3

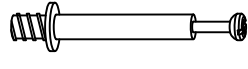

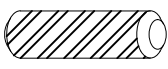



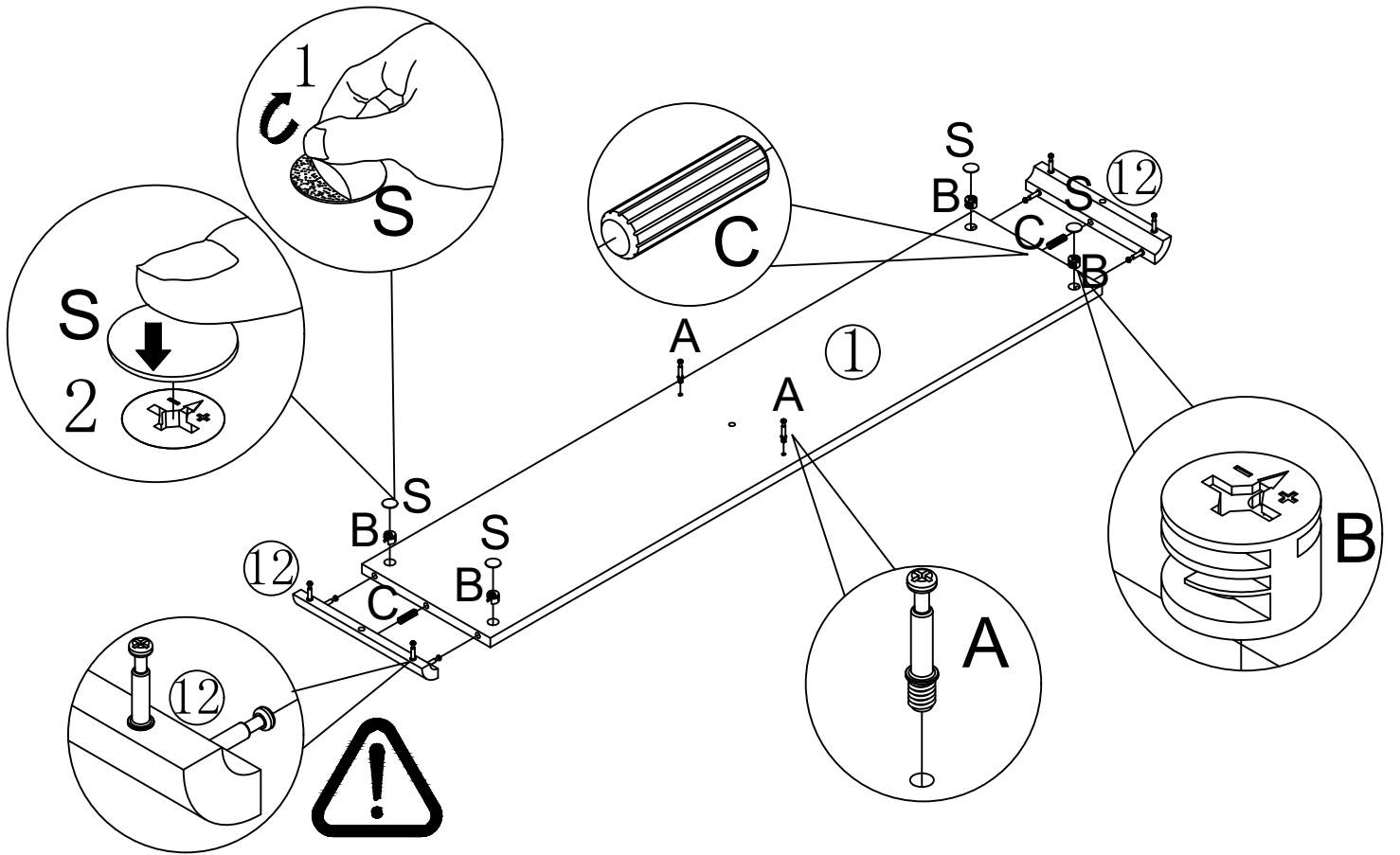
Step 4





In this step, be careful not to break the No. ⑫ lock on the lock hardware A

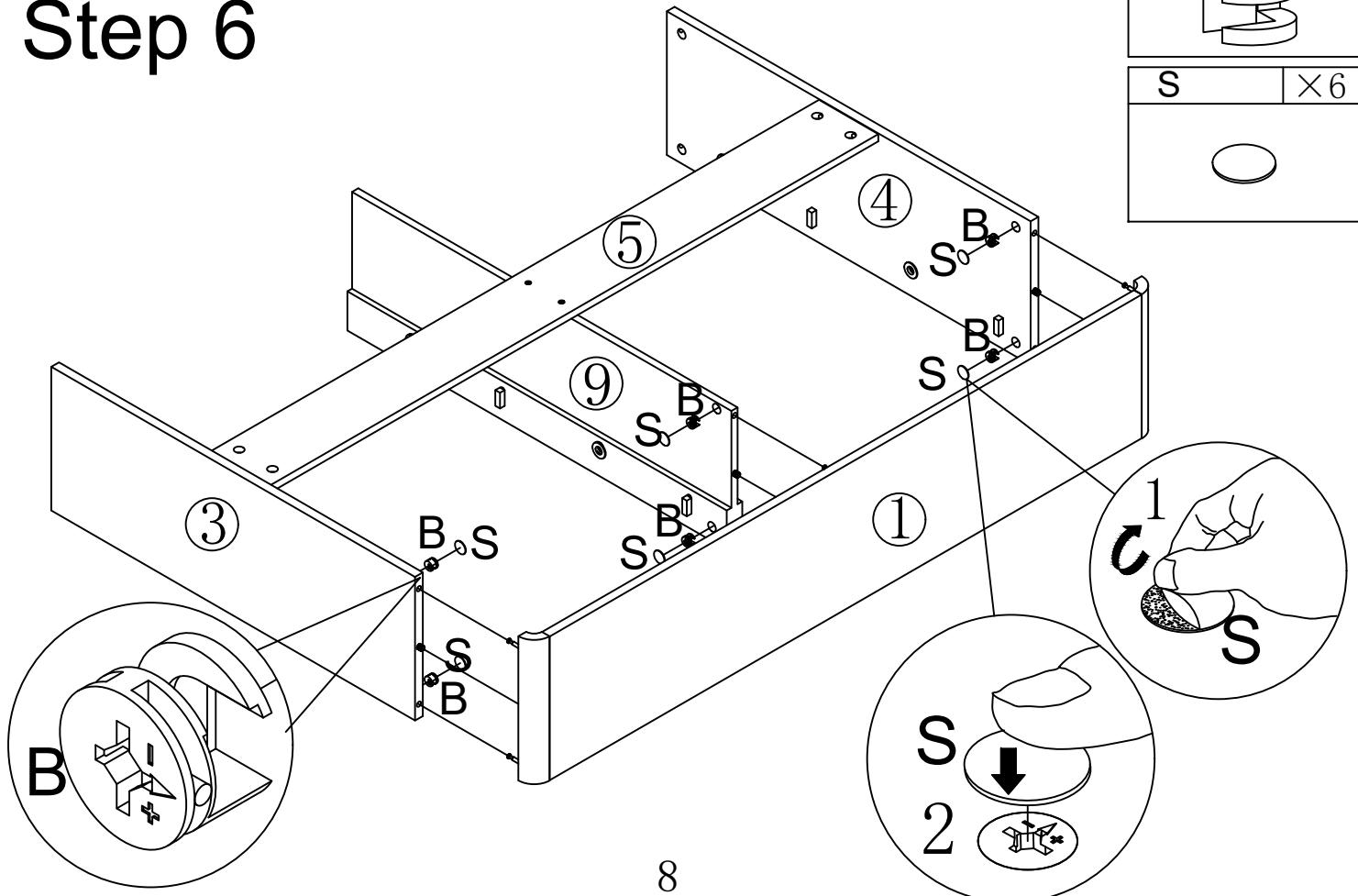
Step 5

A	×2	B	×4	C	×2	S	×4
							

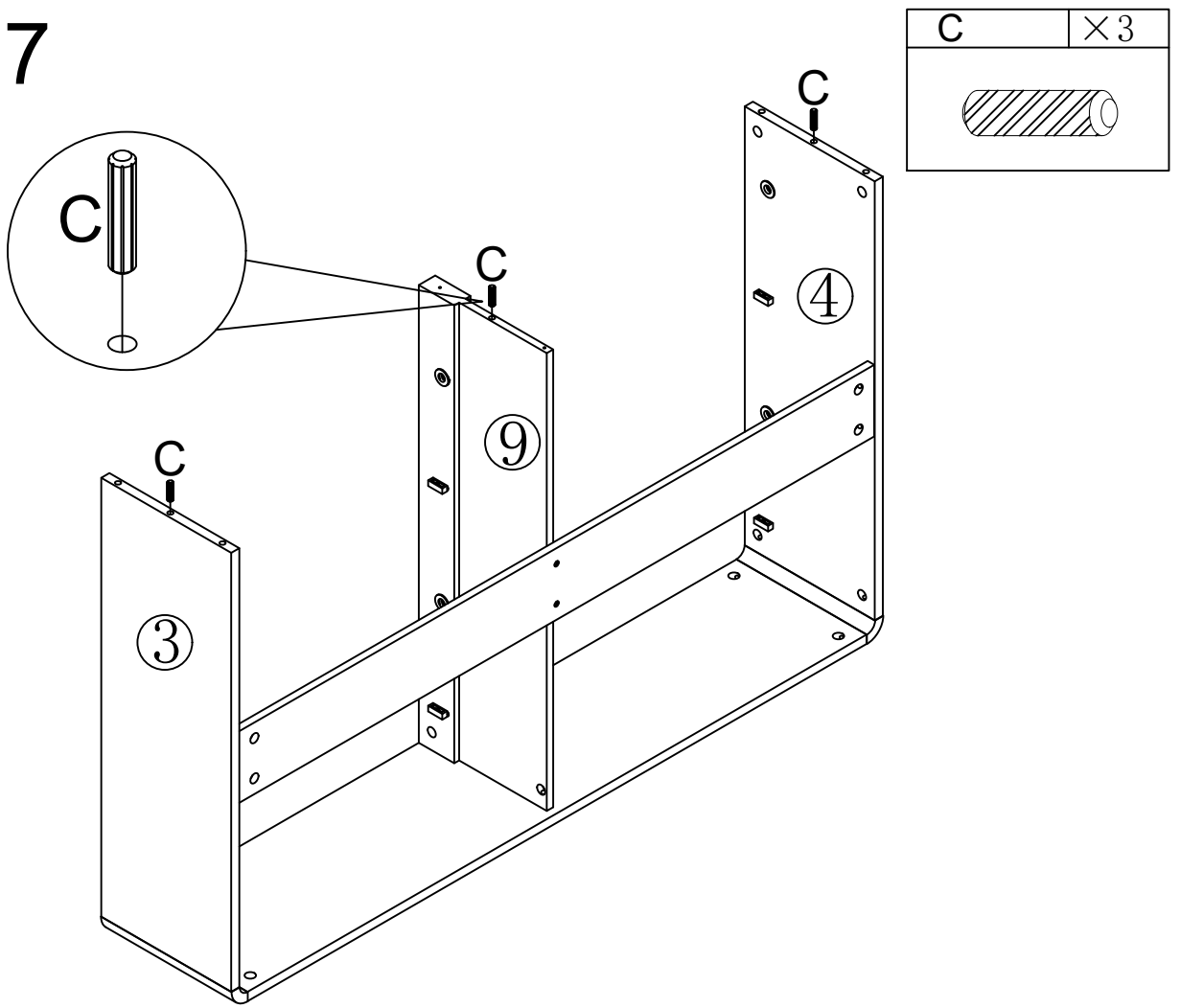


Step 6

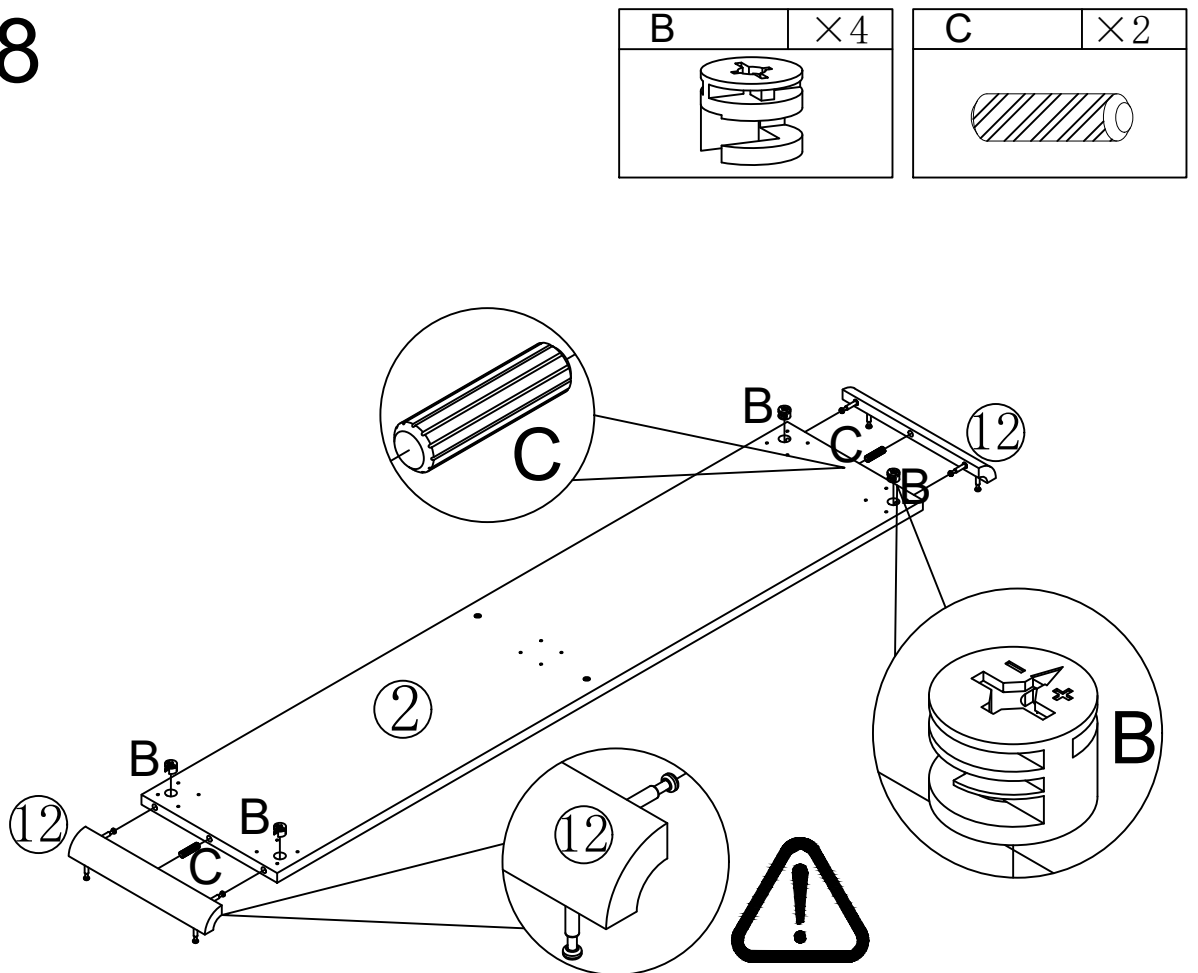
B	×6
	
S	×6
	



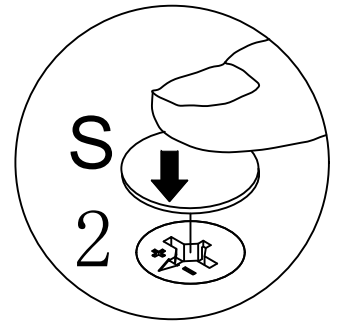
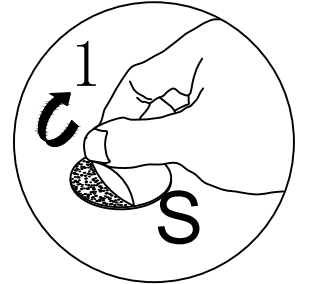
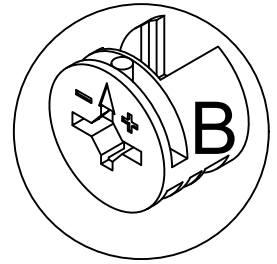
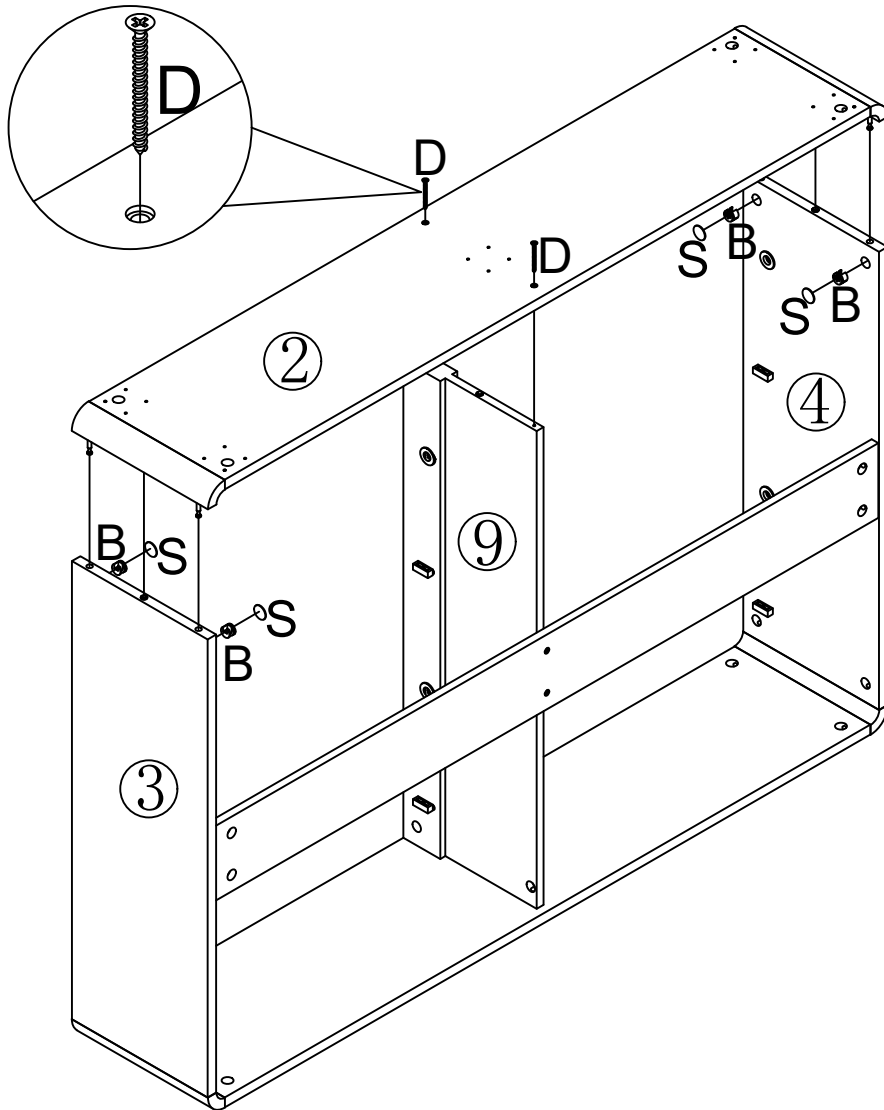
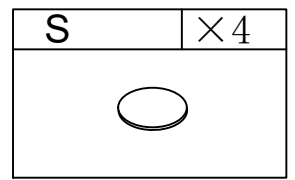
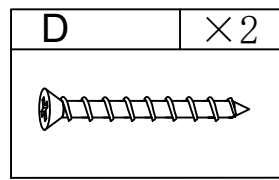
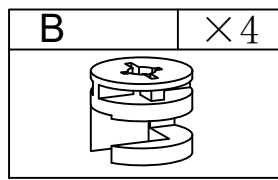
Step 7



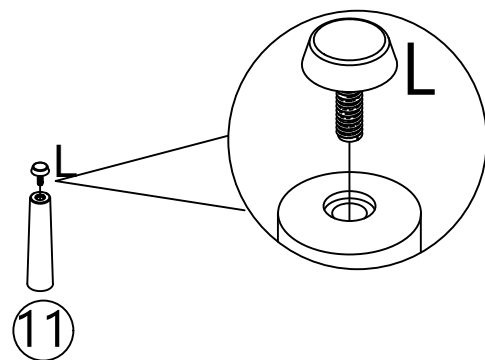
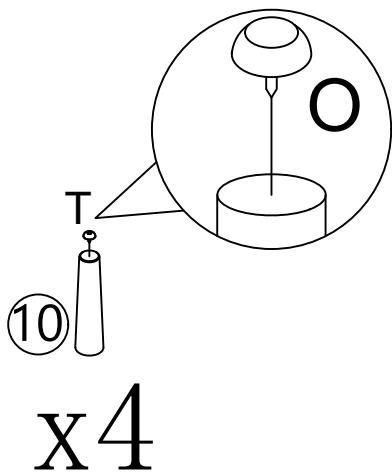
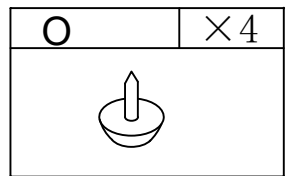
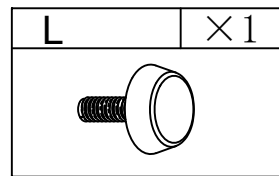
Step 8



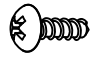
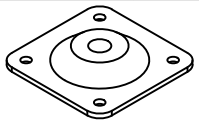
Step 9

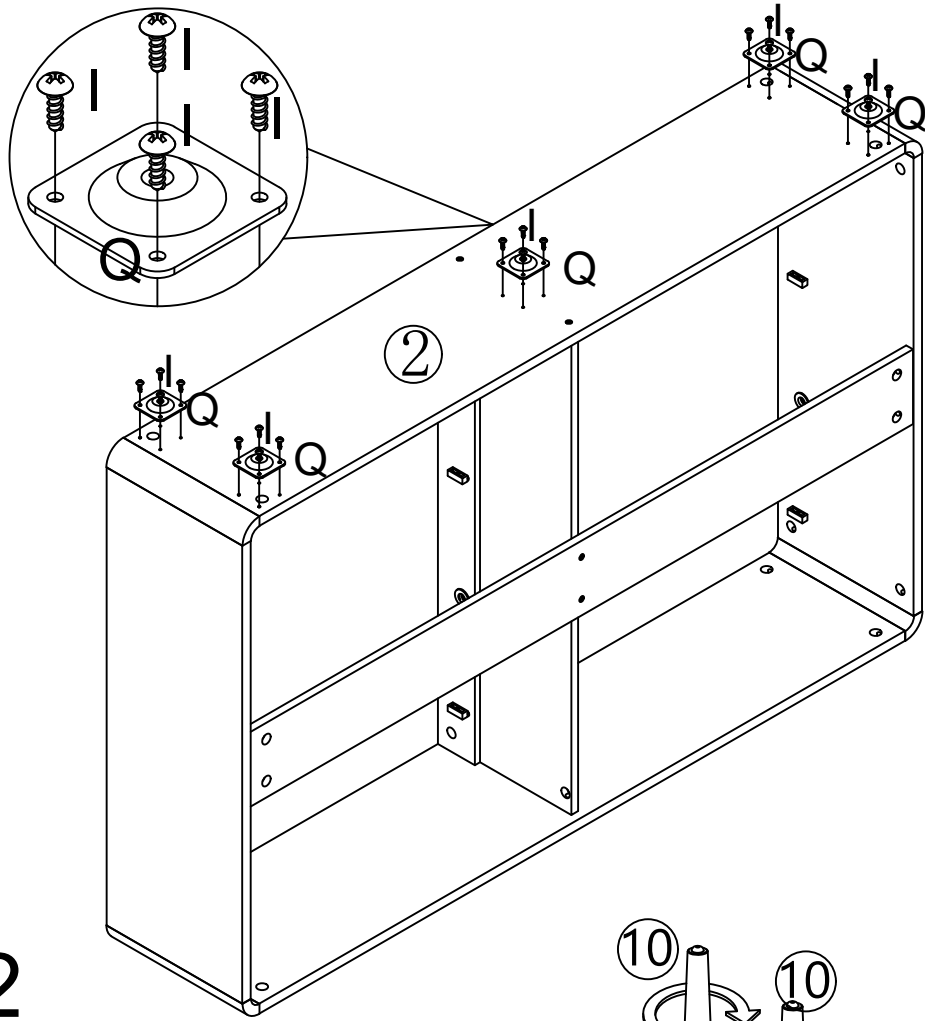


Step 10

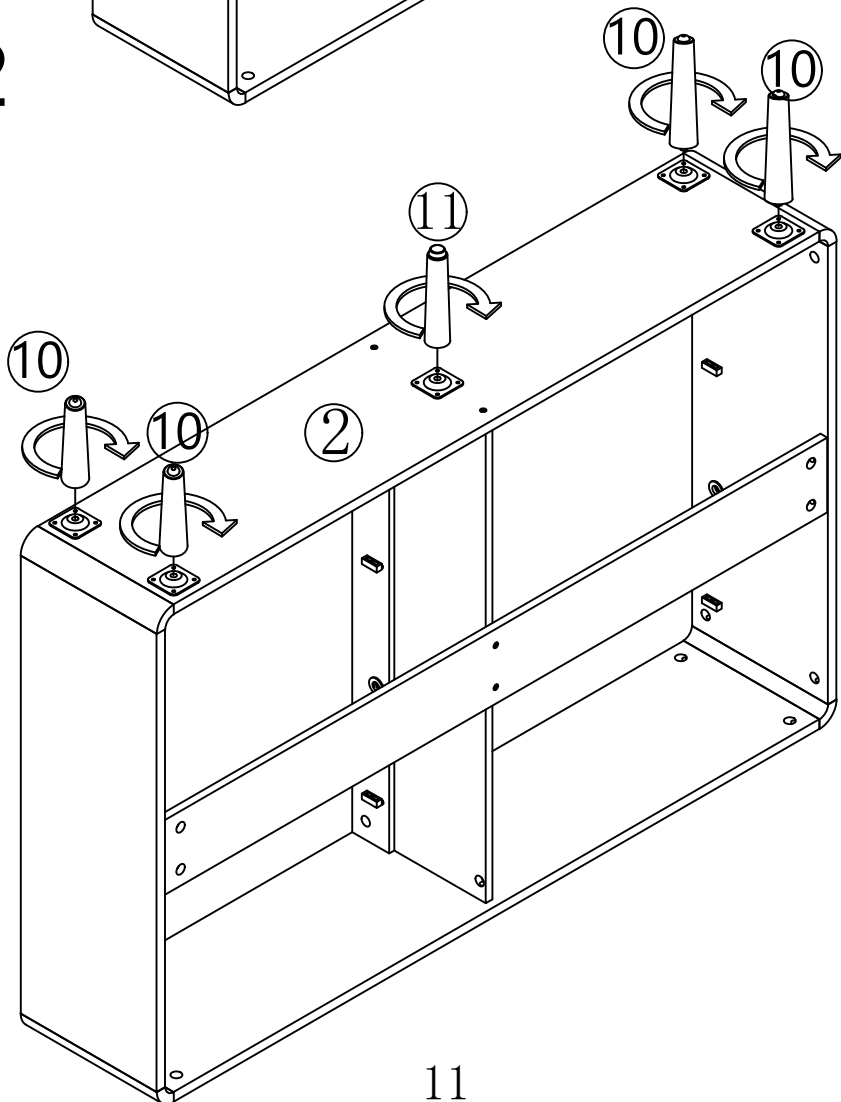


Step 11

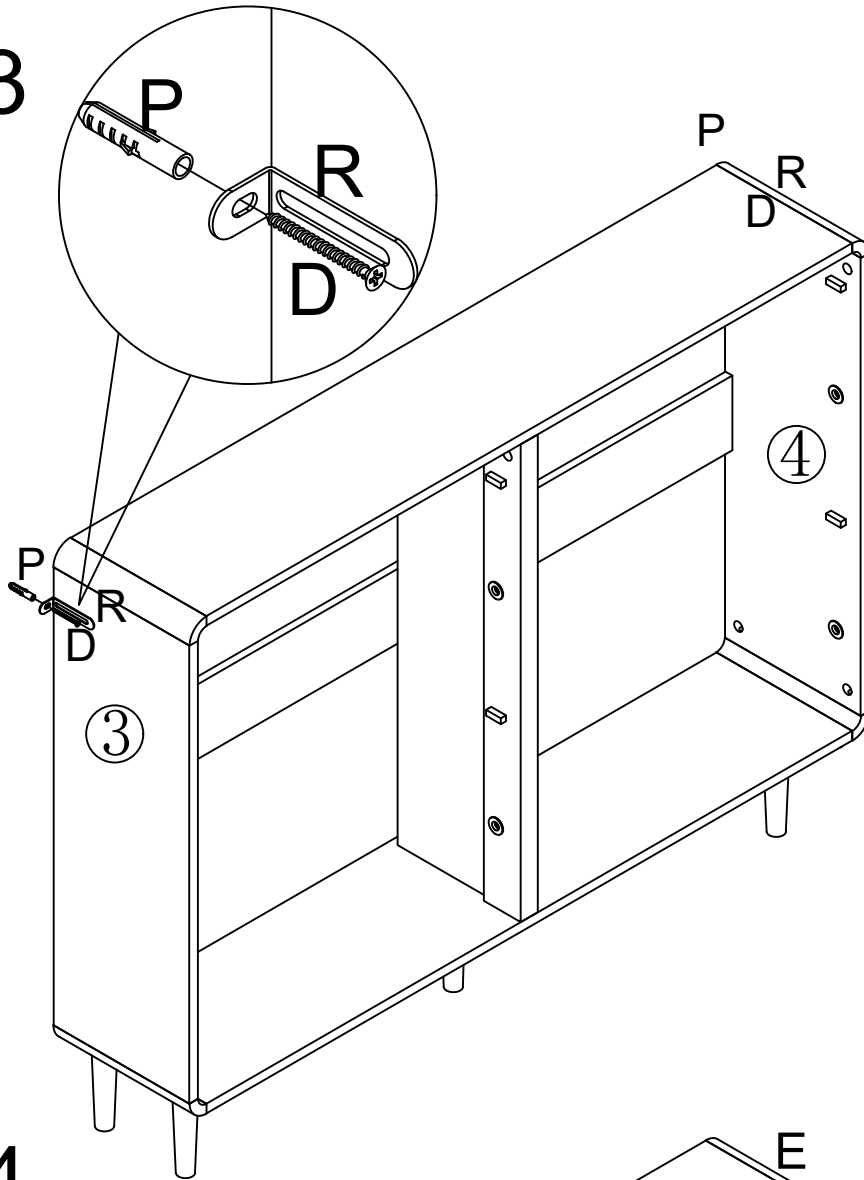
I	×20	Q	×5
			

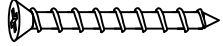

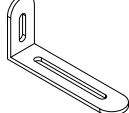


Step 12

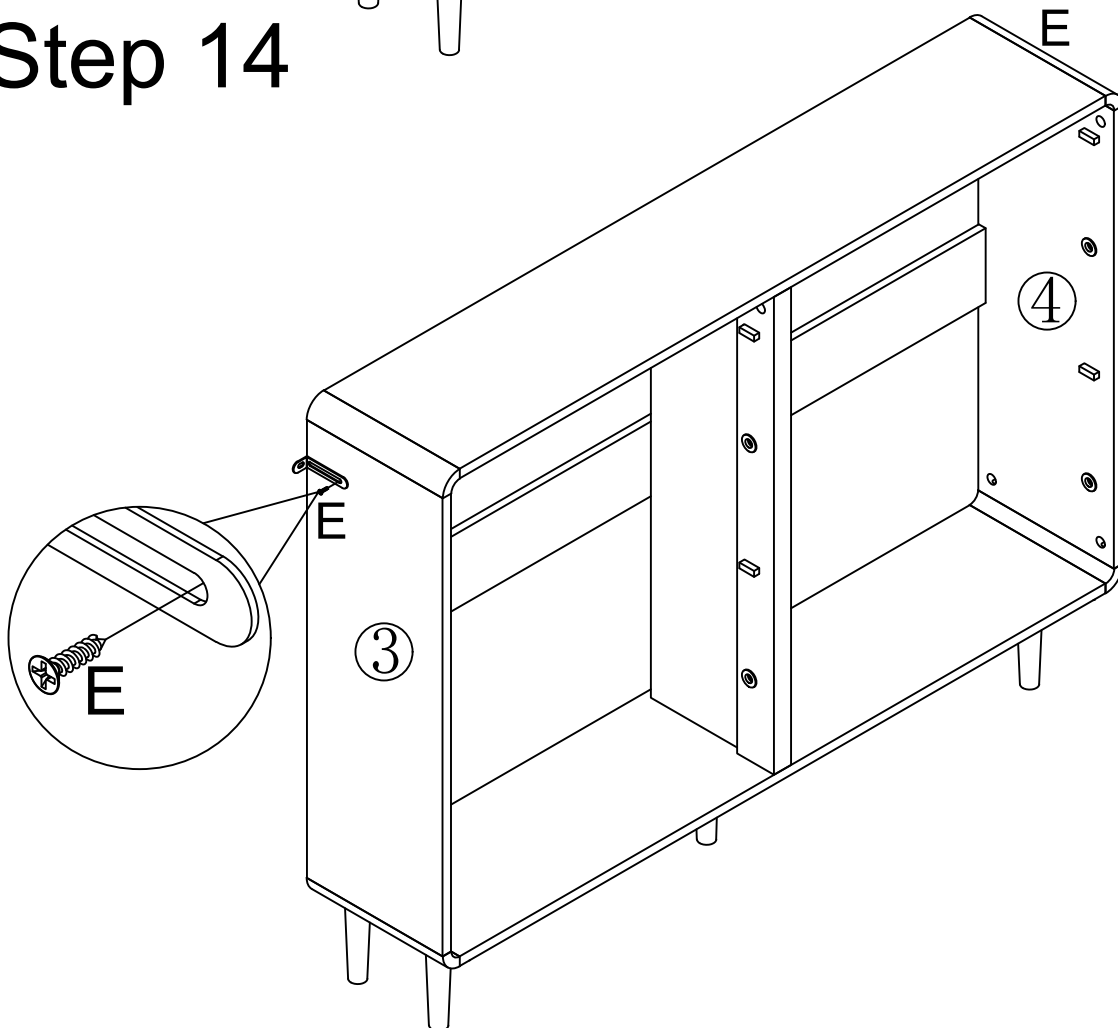



Step 13



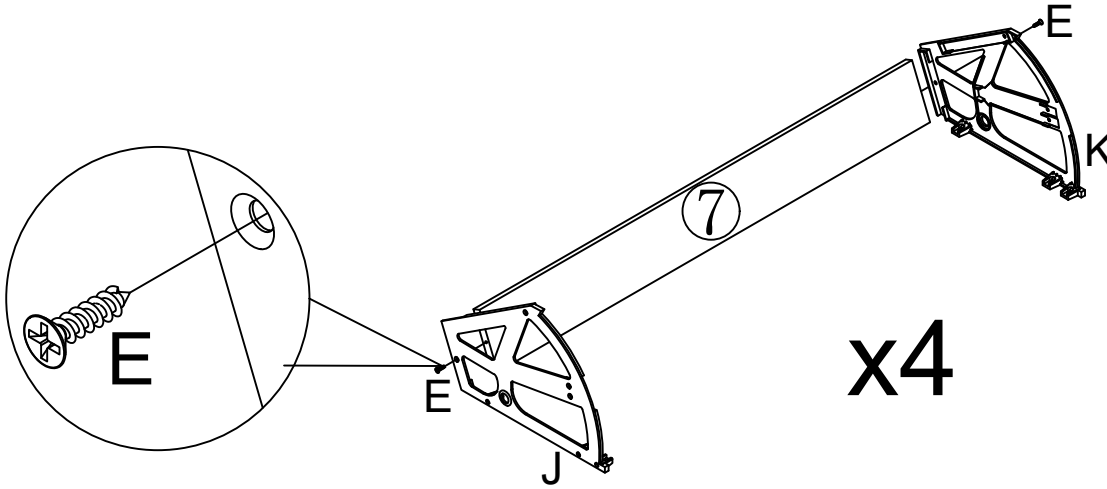
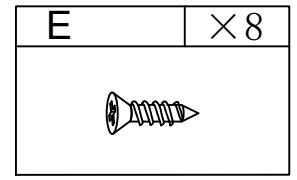
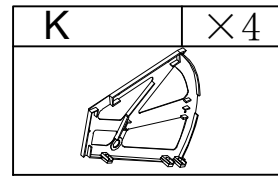
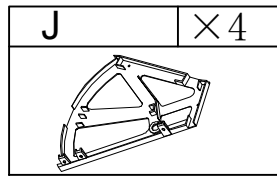
D	×2
	
P	×2
	
R	×2
	

Step 14

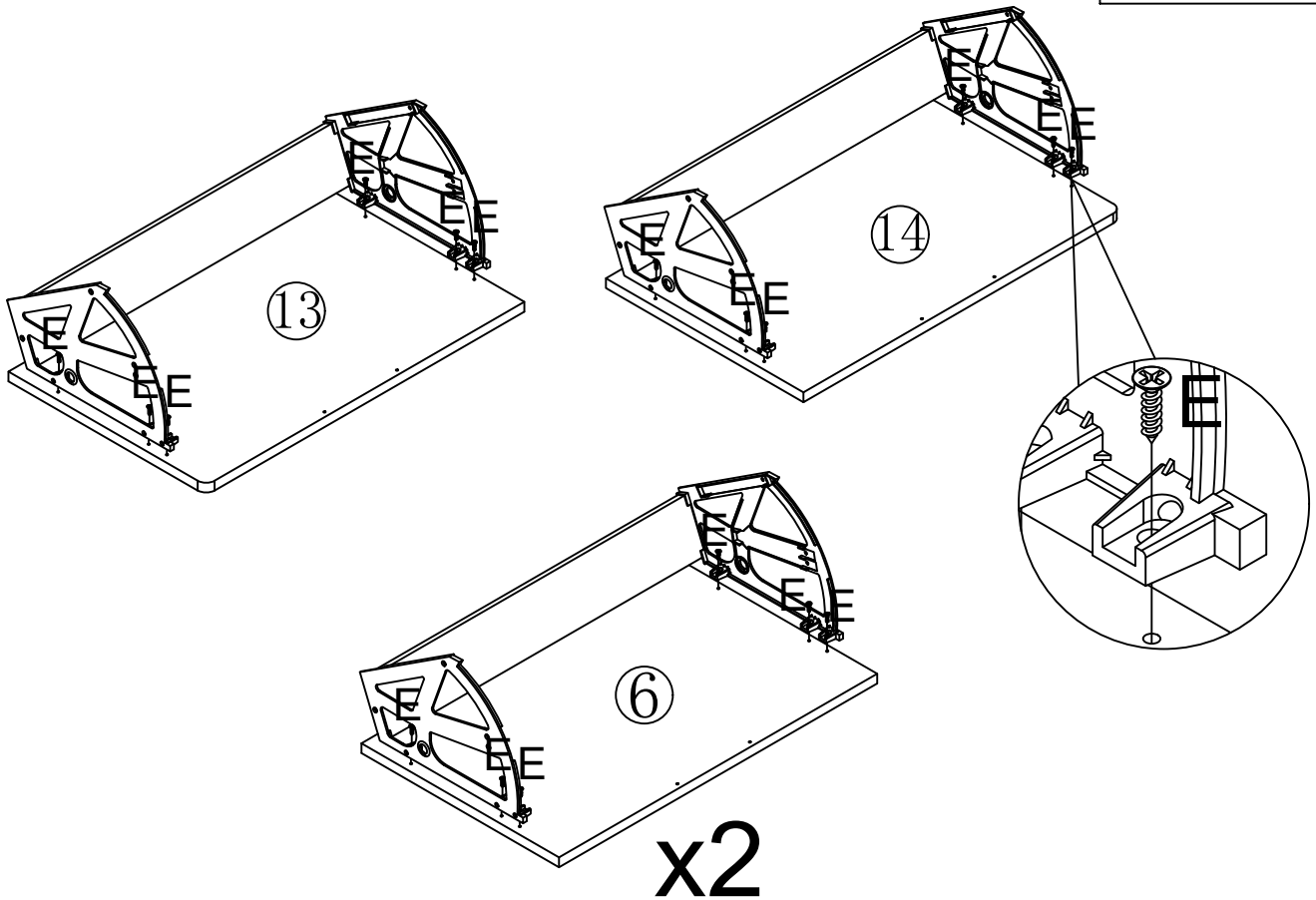
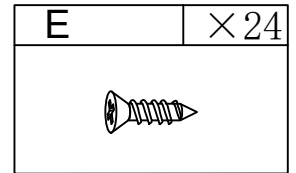


E	×2
	


Step 15

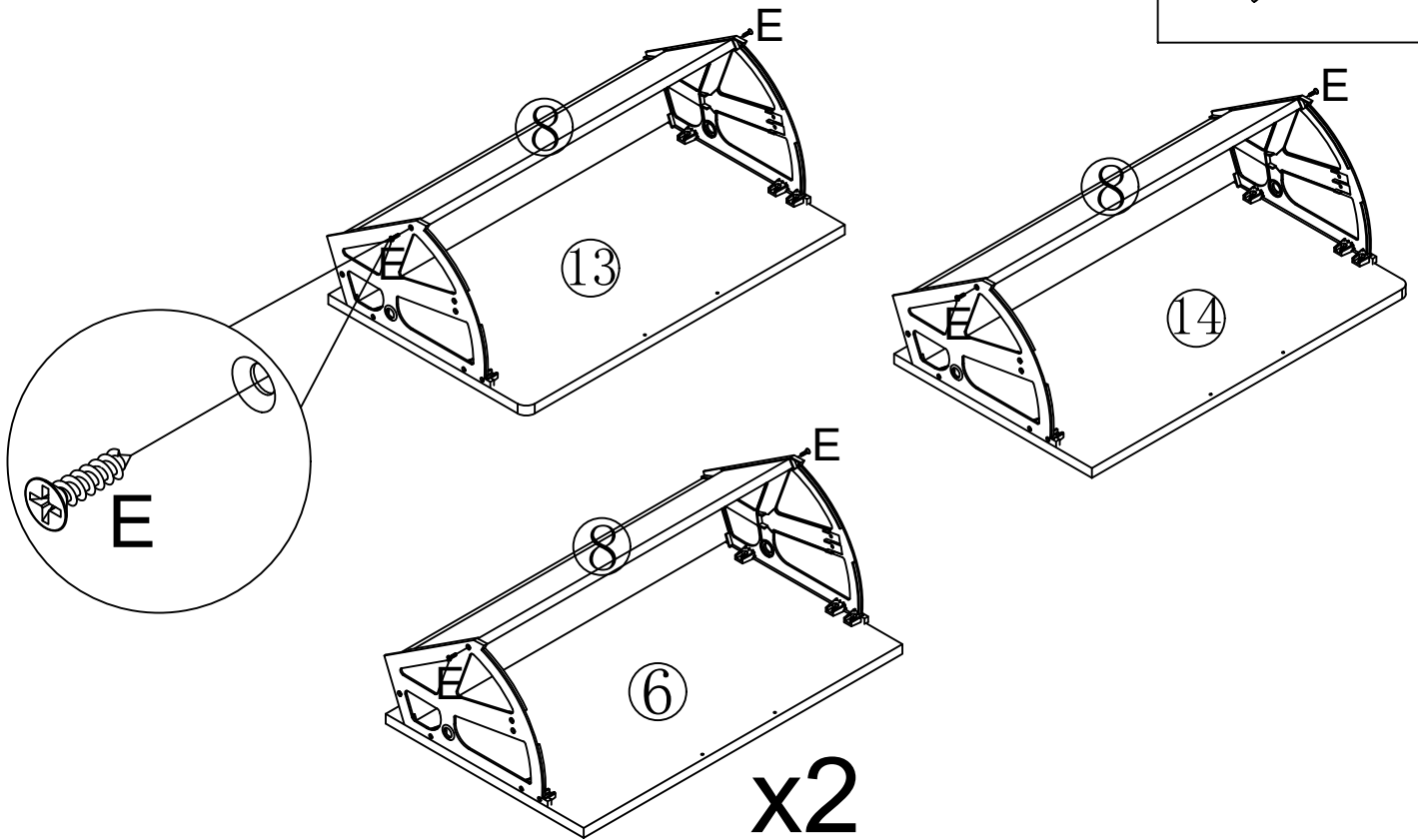


Step 16


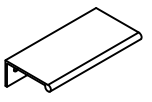


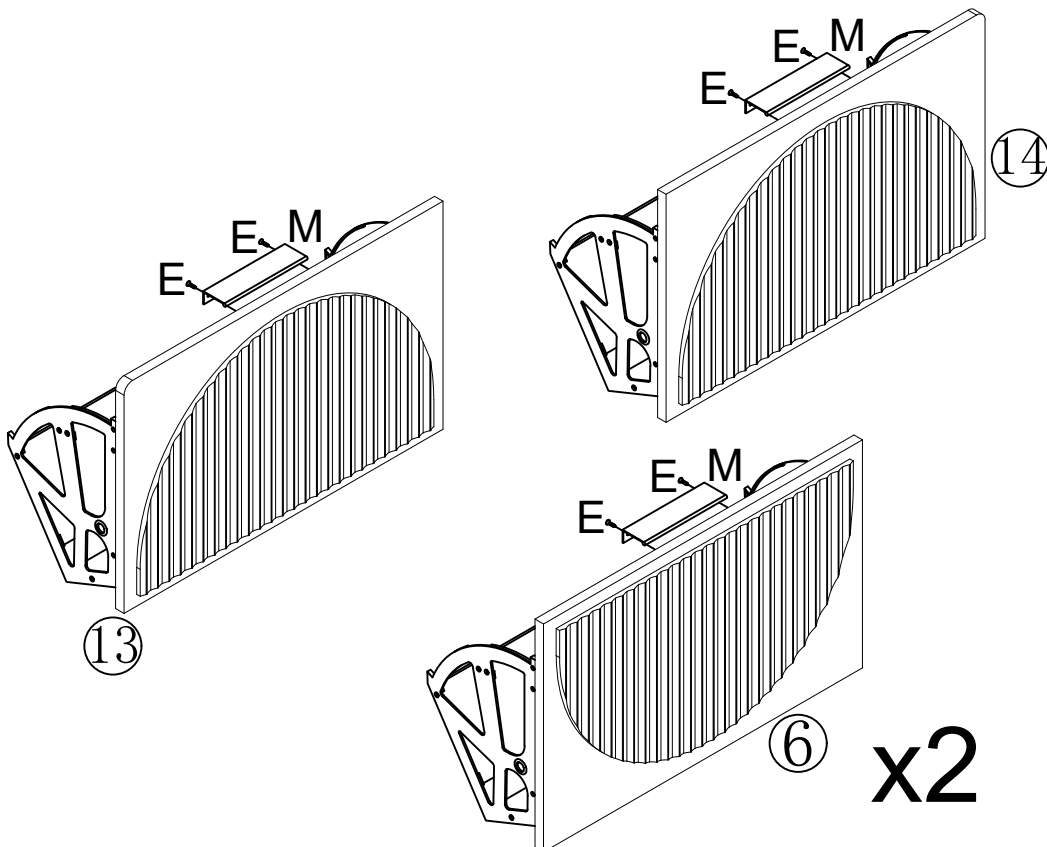
Step 17

E	×8
	





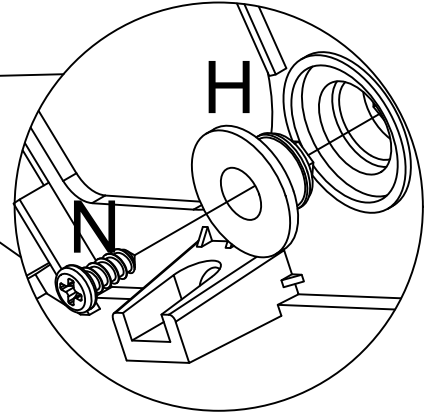
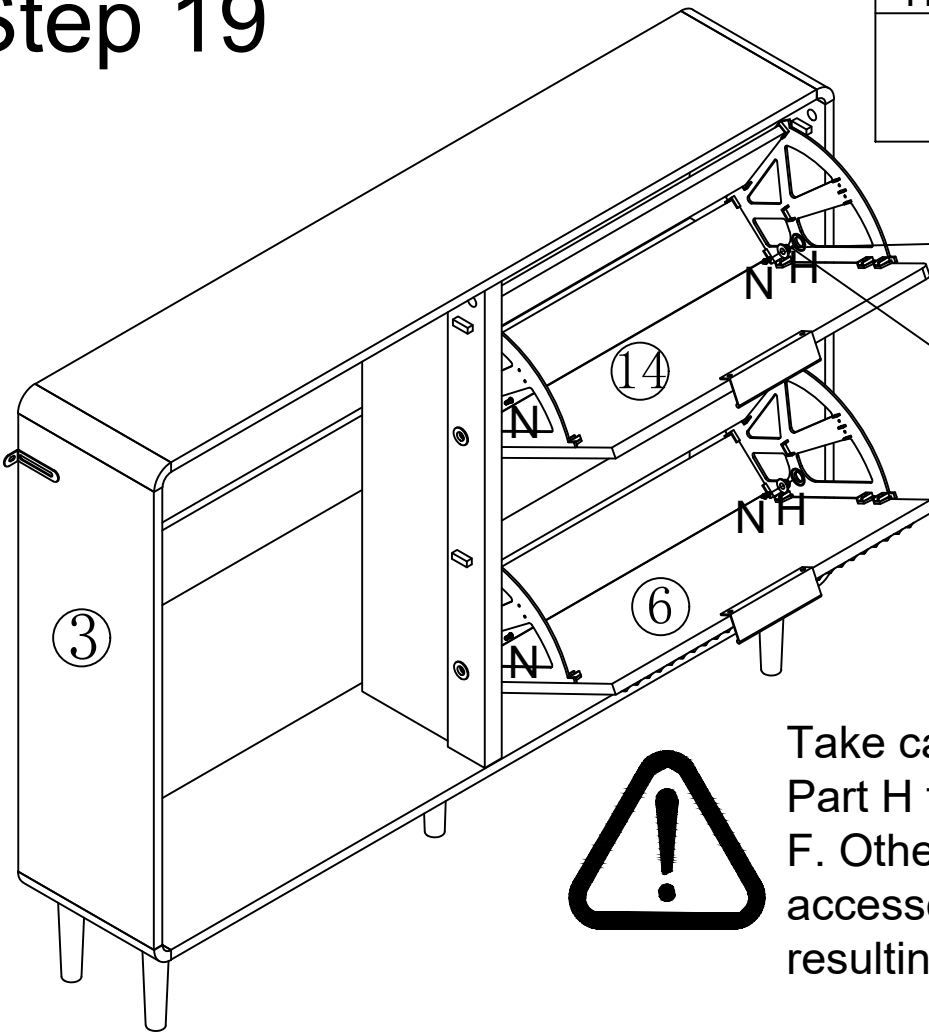
Step 18

E	×8	M	×4
			



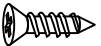
Step 19

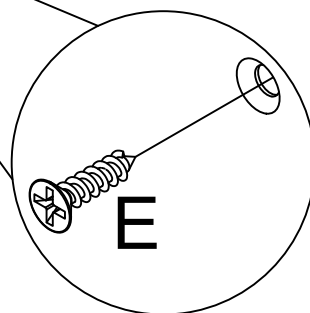
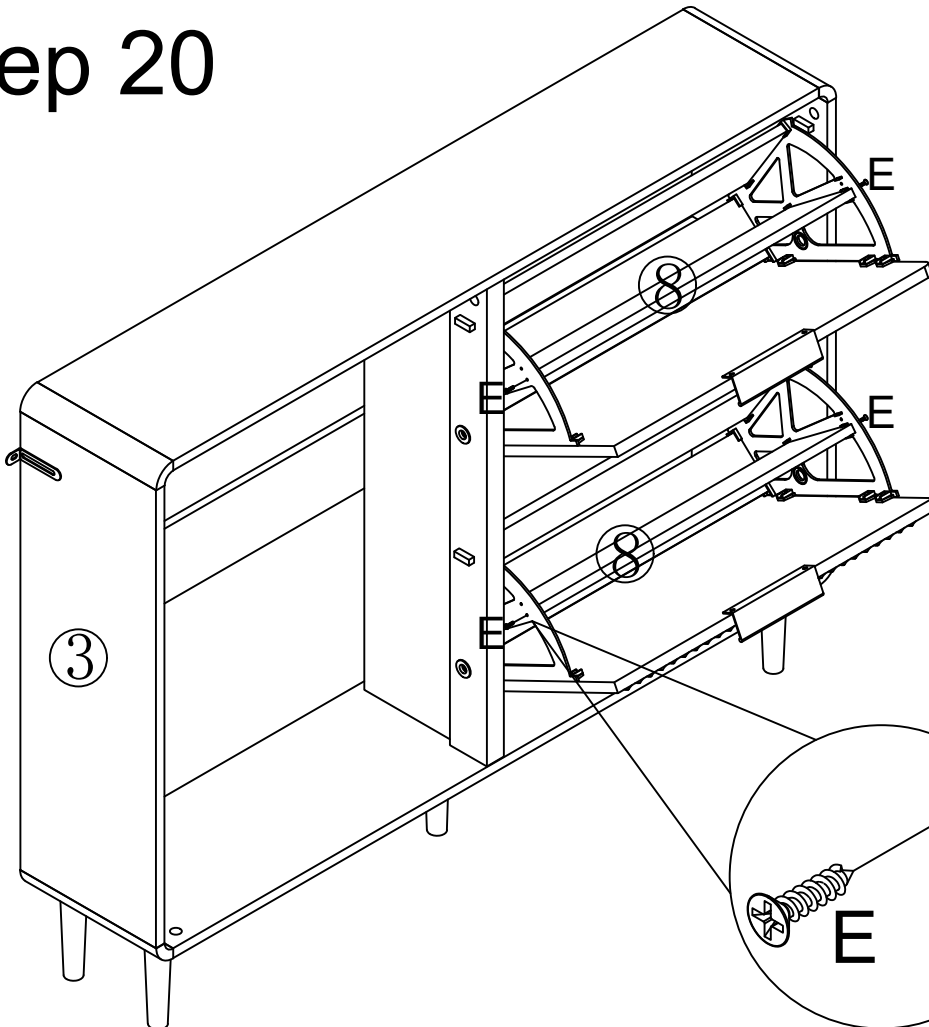
H	×4	N	×4
			





Take care to lock part N through Part H to the middle hole of part F. Otherwise, the part F of the accessory will be damaged resulting in failure to lock.

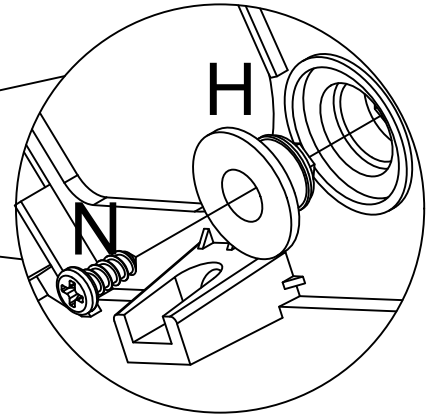
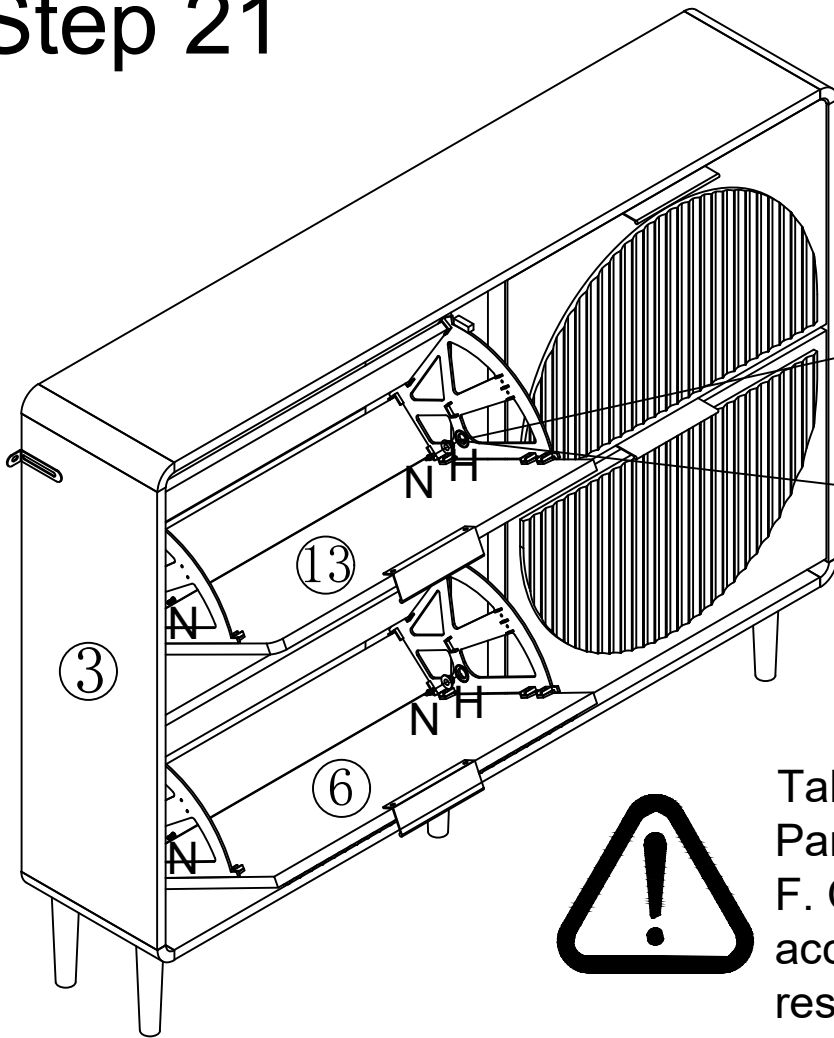
Step 20

E	×4
	




Step 21

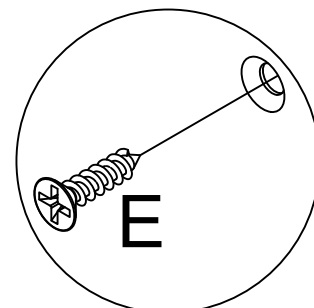
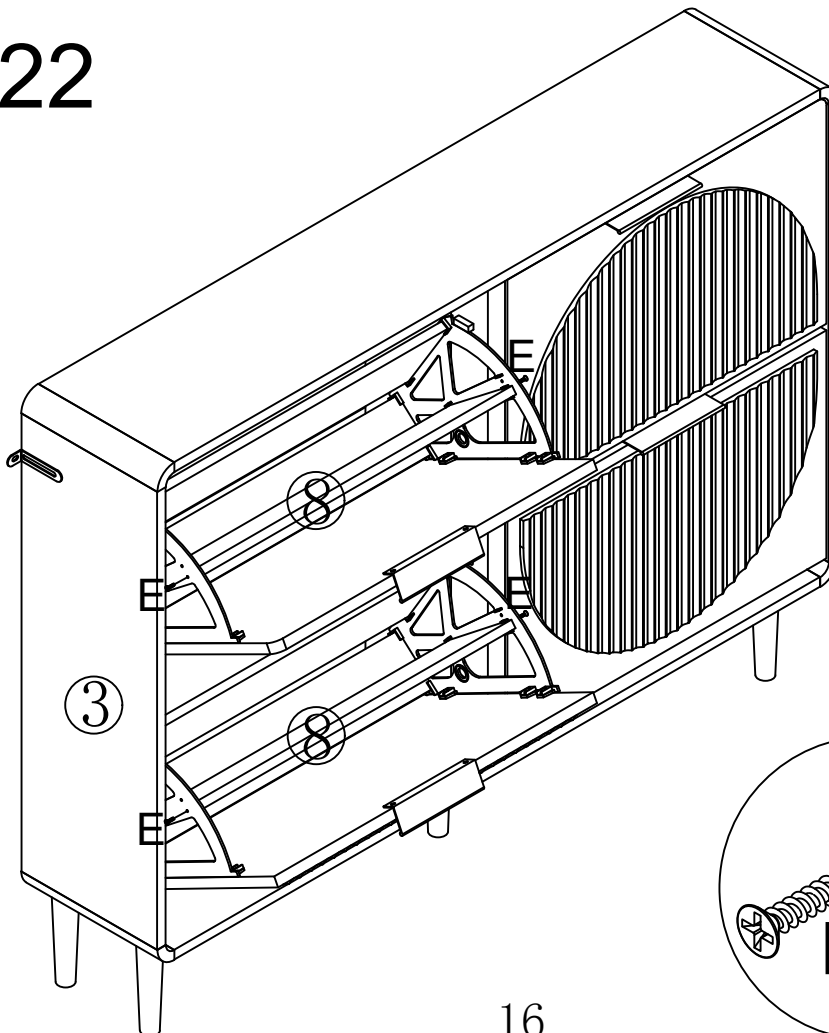
H	×4	N	×4
			



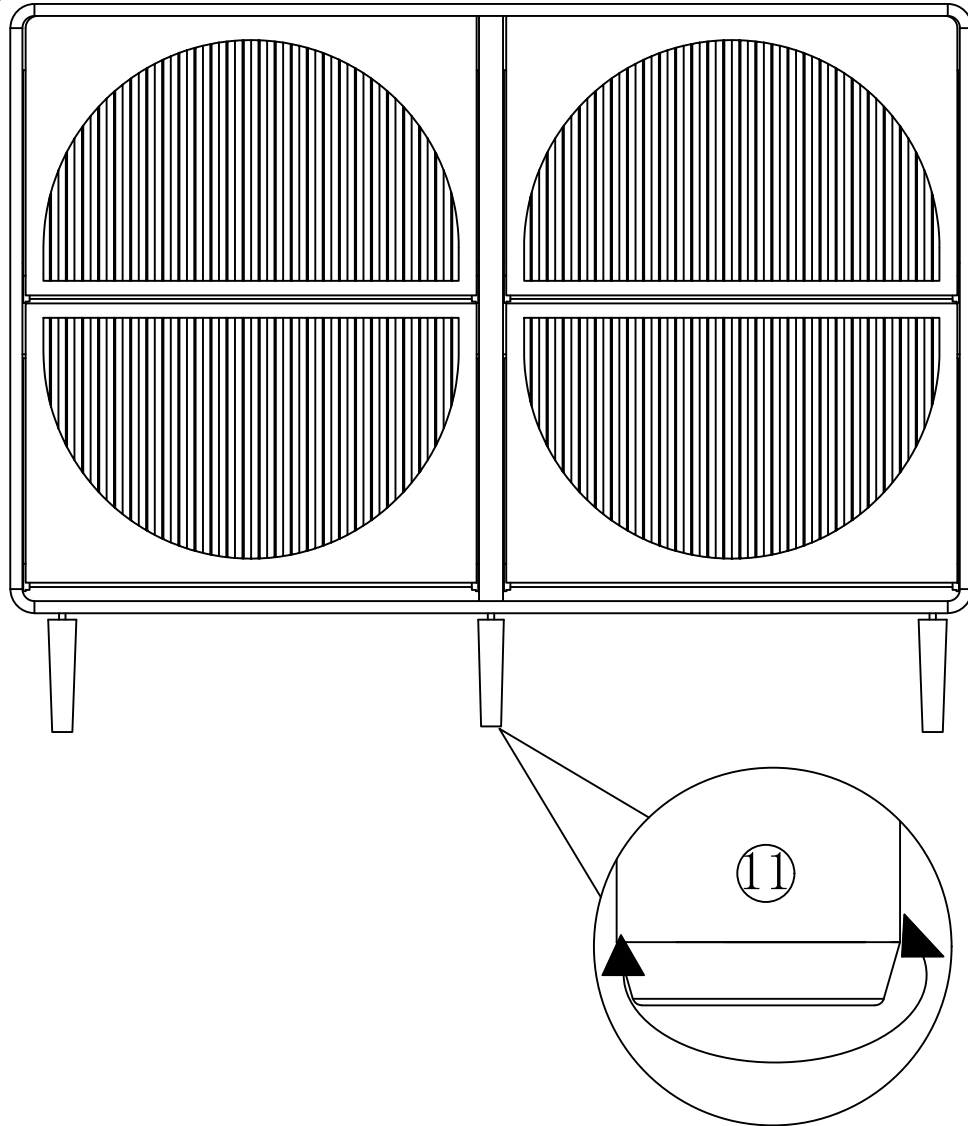
Take care to lock part N through Part H to the middle hole of part F. Otherwise, the part F of the accessory will be damaged resulting in failure to lock.

Step 22

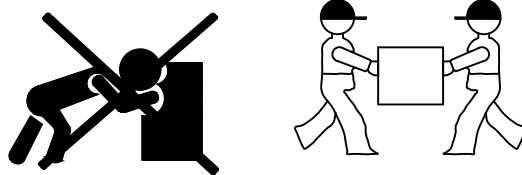
E	×4
	



Step 23



If the center position of the cabinet is too high or too low due to uneven bottom plates or other reasons, adjust the adjustable foot pads on feet ⑪ to adjust the upper and lower height



Two people work together to move the table. Make sure you lift it off the ground. Don't push and pull.

