

LED FLUSH MOUNT LIGHTING



Safety Instructions:

Seek assistance from a qualified electrician if unsure about the proper wiring connections

Turn off the power supply before installing or servicing the light fixture.

Do not touch the wires or electrical components with wet hands or metal objects.

Do not attempt to modify or disassemble the light fixture.

Make sure all connections are tight and correctly installed.

Do not install the light fixture near heat sources or flammable materials.

Do not look directly at the light while it is on.

Do not touch the light or the surrounding area when the light is turned on, as it may be hot.

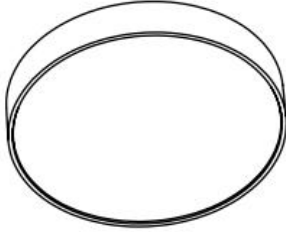

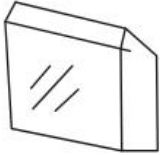
Allow the light fixture to cool down before replacing.

Do not expose the light fixture directly to water. The LED light is damp-rated, but it is not water-proof.

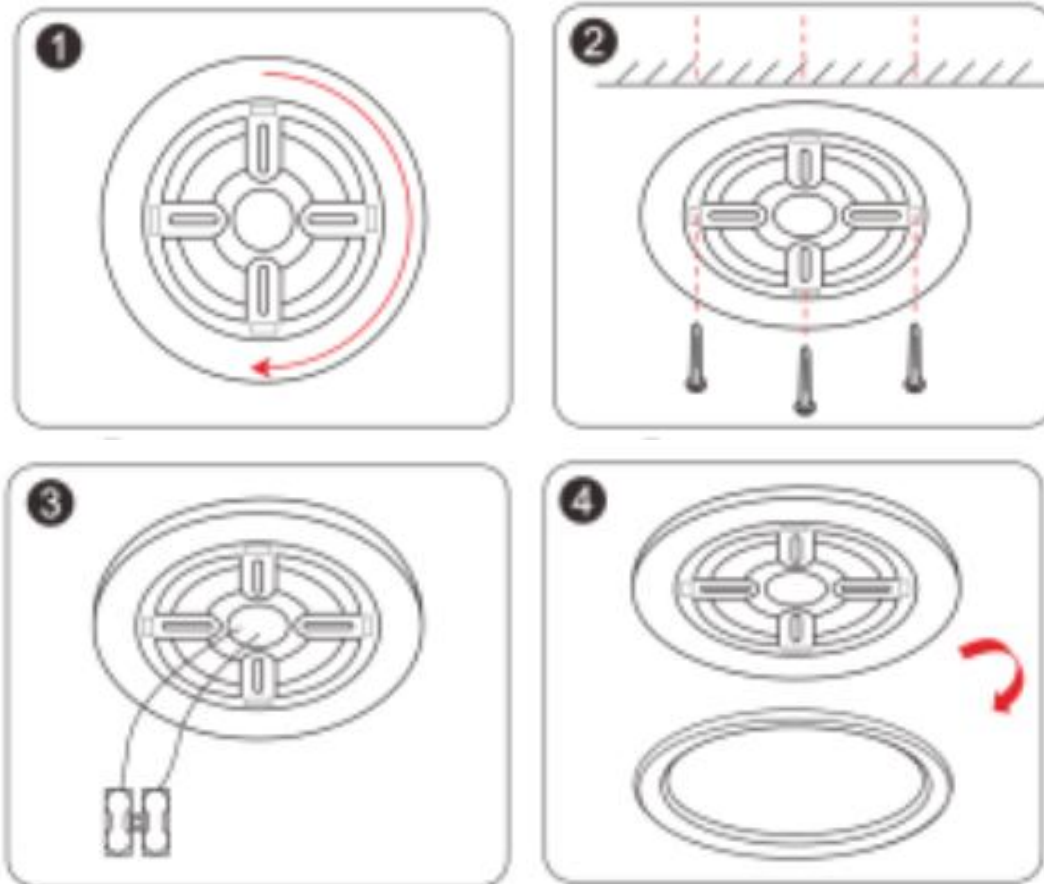
Do not use abrasive or corrosive cleaning agents to clean the light fixture.

If the light fixture becomes damaged or stops working properly, stop using it immediately and contact customer service for assistance.

Package Contents:

1 x LED Ceiling Light	
1 x Mounting Bracket (It may vary for different sizes, but the installation guide is similar)	
1 x 3-Hole Wire Connector 1 x User manual 8 x Screws 8 x Ribbed Anchors	

Installation:



1. Turn off the power supply before installing the light.
 2. Use the ribbed anchors and screws to attach the mounting bracket to the ceiling.
 3. Connect the wires according to the following instructions:*
- Connect one of the white wire from the ceiling to the Live Wire on the light fixture using the wire connector (L).
Connect the other white wire from the ceiling to the Neutral Wire on the light fixture using the wire connector (N).
4. Carefully push the wires into the ceiling Junction box*.
 5. Attach the light fixture to the mounting bracket by rotating the LED light.
 6. Turn on the power supply and test the light.

Important Note:

The LED light casing is made of plastic and therefore does not have an earth wire. There is not necessary to distinguish between live wire and neutral wire when wiring this LED light.
Junction box is not included.

Troubleshooting:

Problem	Solution
The light does not turn on.	<ol style="list-style-type: none">1. Make sure the power supply is turned on and the switch is on.2. Check the circuit breaker or fuse to make sure it is not tripped or blown.3. Make sure the wiring connections are correct and secure.4. If the wiring connections are correct, the light may be defective and should be replaced. Please contact our customer service for assistance.
The light flickers.	<ol style="list-style-type: none">1. Make sure the light is properly connected to the power supply.2. If the light is connected properly, the flickering may be caused by a faulty LED driver. Please contact our customer service for assistance.
The light is dimmer than expected.	<ol style="list-style-type: none">1. Make sure the wattage and lumen output of the light are suitable for the room size and intended use.2. Check that the light is not on a dimmer switch, as the light is not dimmable.3. If the above solutions do not work, the light may be defective and should be replaced. Please contact our customer service for assistance.