



## Solar Pathway Lights - 2 pack

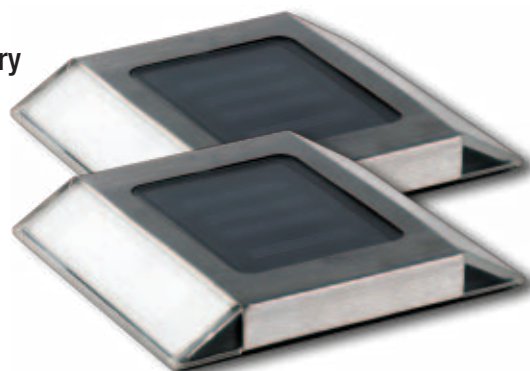
- Each light is constructed with high quality stainless steel
- Weather resistant to wear and corrosion
- Long lasting lights will run up to 8 hours on a full charge
- Photocell sensor automatically turns light on at dusk and off with ambient lighting
- Easily installs in just minutes fixing bracket and screws included
- With no electrical wiring required this light can be used anywhere
- Each light contains amorphous solar panel and 1 AA, 600 1.2V NI-MH battery

### Shipping Details

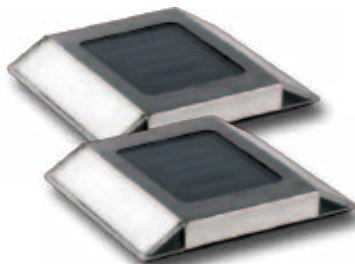
Item Number:	21070
UPC Code:	839290002131
Country of Origin:	China
Shipping Dimensions:	2¾ x 5¼ x 4½"
Shipping Weight:	2.2 lbs
Master Dimensions:	12½ x 10.6 x 12½"
Master Weight:	35.2 lbs
Master Quantity:	16
HS Code:	8541402000
NMFC:	109700-7
Freight Class:	92.5

### Specifications

Solar Type:	Amorphous
Solar Watts:	0.2
LED Type:	Cold White
Material:	Stainless steel
Battery Type:	1, AA 600mAh 1.2V NI-MH
Runtime:	Up to 8 hours
Size:	¾ x 4½ x 4½"



**Great for driveways,  
paths, decks,  
walkways and more!**



Pack of 2 lights

