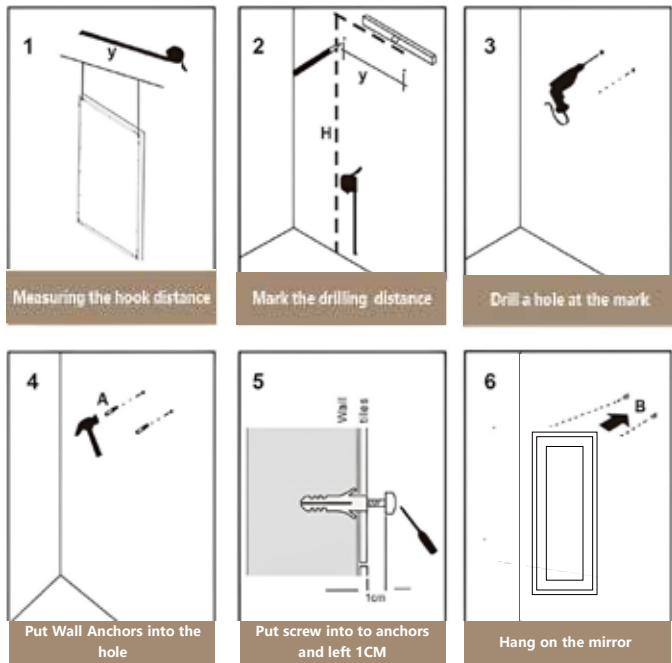
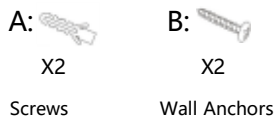
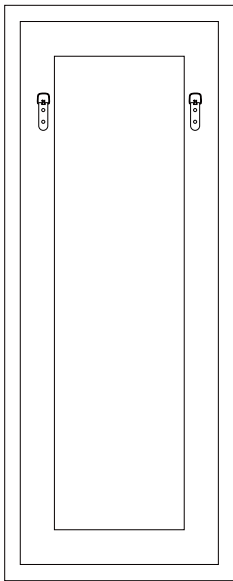


# Installation Instructions

Frame



NOTE:1.  this is a hook

2: Use the accessories according to the number of hanging holes on the back of the mirror , extra accessories are spare parts

Installation steps:

1. Measure the distance between the two holes on the rear of the mirror . Mark these measurements on the wall and ensure they are level .
2. Make pilot holes to install proper anchors and hardware .
3. Lift the mirror into position and latch it on the screw .