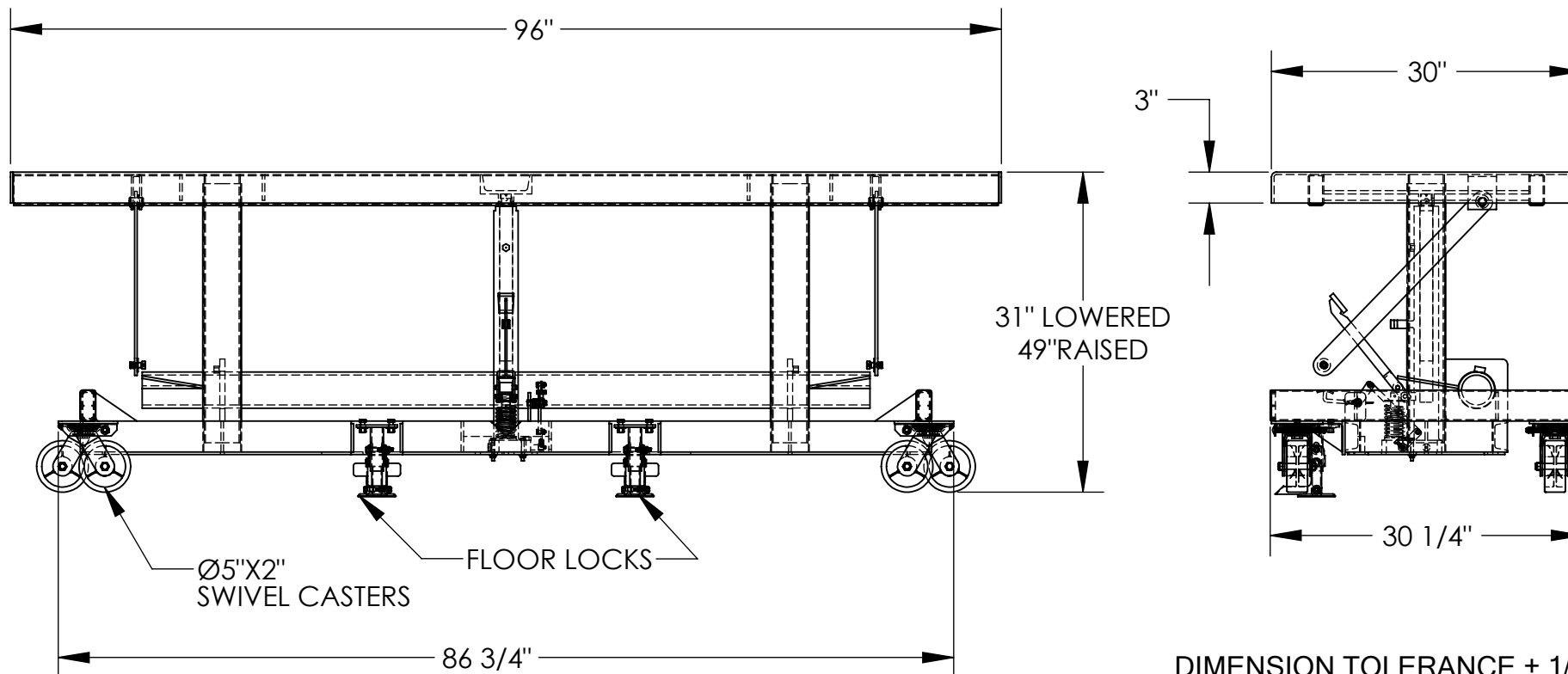


LONG DECK CART - LDLT-3096

APPROX WEIGHT: 731.80 lbs.
DOES NOT INCLUDE WEIGHT OF POWER OR PACKAGING!!!

*** ANY ADDITIONS, DELETIONS, OR OMISSIONS MUST BE CORRECTED ON THIS DRAWING AS THIS DRAWING WILL BE CONSIDERED ALL INCLUSIVE ***
ALL GRAPHICS PROVIDED ARE FOR REFERENCE ONLY. IF CERTAIN DIMENSIONS ARE CRITICAL PLEASE VERIFY THOSE DIMENSIONS WITH YOUR SALESPERSON



DIMENSION TOLERANCE $\pm 1/4$ "

APPROVAL

I, THE UNDERSIGNED, AGREE THAT THE PRODUCT AS REPRESENTED SATISFIES DESIGN AND DIMENSION REQUIREMENTS. I ALSO ACKNOWLEDGE MY DUTY TO CONFIRM PRODUCT AND INSTALLATION COMPLIANCE WITH ALL APPLICABLE FEDERAL, STATE AND LOCAL REGULATIONS AND STANDARDS.

ANY MODIFIED UNITS ARE NON-RETURNABLE

[] As drawn [] As marked

Signed: _____ Date: _____

Printed Name: _____

LEAD TIME WILL START UPON RECEIPT OF SIGNED APPROVAL DRAWING

SPECIAL FEATURES

NONE

STANDARD FEATURES

MODEL NUMBER IS LDLT-3096
CAPACITY IS 2000 LBS. (EVENLY DISTRIBUTED)
PLATFORM WIDTH IS 30"
FRAME WIDTH IS 30 1/4"
PLATFORM LENGTH IS 96"
FRAME LENGTH IS 86 3/4"
PLATFORM RAISED HEIGHT IS 49"
PLATFORM LOWERED HEIGHT IS 31"
FOUR SWIVEL 5"X2" POLY-ON-STEEL CASTERS
DUAL FLOOR LOCKS
MANUAL FOOT PUMP OPERATION
DURABLE LIQUID PAINT BLUE FINISH

FOR INTERNAL USE ONLY
PROJECT SIGN OFF

SALES	
ENG.	
FAB.	
POWER	

DISTRIBUTOR'S NAME:

VESTIL MANUFACTURING

DRAWN BY: SR

DATE: 10/26/06

REFERENCE: X

SCALE: 1:14

QUOTED LEAD TIME: X

QUOTE # X

P.O.# X

W.O.# X

SALES: X

FILE NAME:

21-007-056