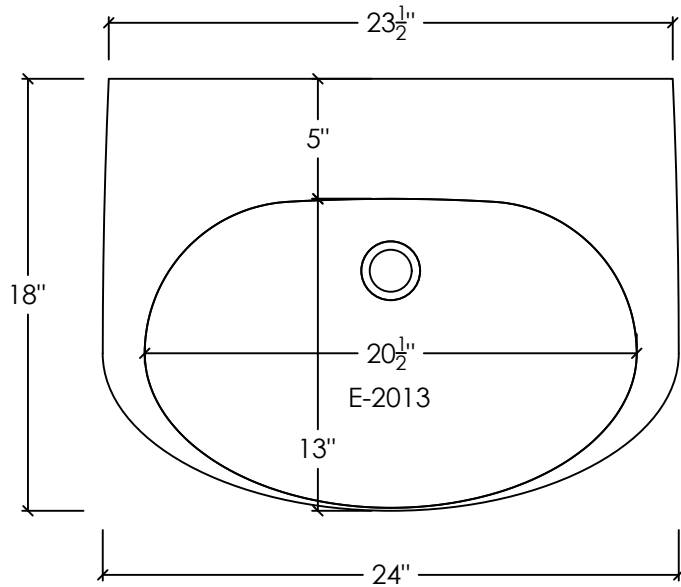
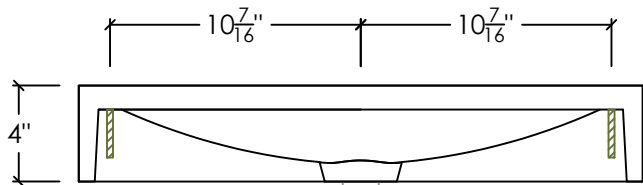


PLAN VIEW



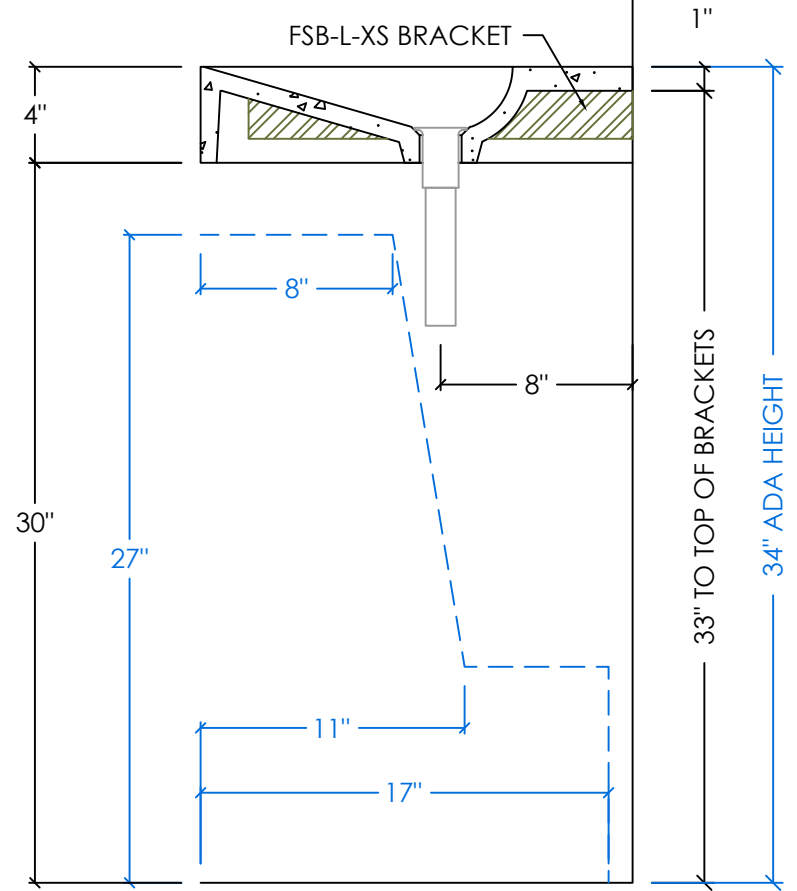
REAR ELEVATION

FSB-L-XS BRACKET LOCATION (SEE BRACKET MOUNTING INSTRUCTIONS)



DRAIN TAILPIECE:
1 1/4" DIAM x 6" LENGTH
(4 FINISHES)

RIGHT SECTION



RECOMMENDED ADA INSTALLATION

SPECIFICATIONS

SINK BASIN:

- SINK MODEL #: E-2013 = 20 1/2" x 13" x 3"
- COMPLIANCE & CERTIFICATIONS:



CSA B45.8/IAPMO Z403
ASME A112.18.2/CSA B125.2
CODE = E-ST-1-1-24x18-(C)-(O)



ICC A117.1

STANDARD FAUCET & SOAP HOLE CONFIGURATIONS (CUSTOMIZABLE):

- 0 HOLES - WALL-MOUNT FAUCET
- 1 SINGLE FAUCET HOLE OR TRIPLE HOLE SET CENTERED ON SINK BASIN
- TRIPLE HOLE SET = 8" SPREAD
- HOLE DIAMETER = 1 3/8"
- HOLE(S) CENTERED 2 1/4" OFF OF BACK OF SINK BASIN