

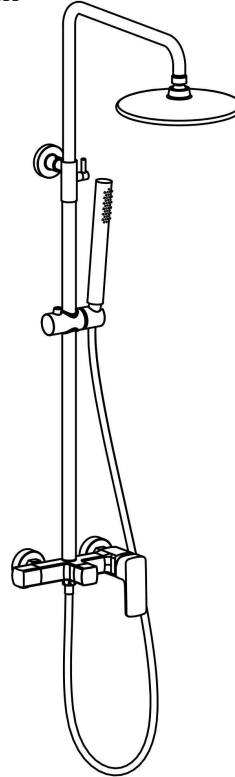
**AQUA  
GALLERY**

# User's Manual



# INSTALLATION INSTRUCTIONS

## Installation Manual



**IAPMO RESEARCH AND TESTING, INC.**  
5001 East Philadelphia Street, Ontario, California 91761-2816 • USA • 909-473-4100 • 909-473-4244 • www.iapmo.com





**CERTIFICATE OF LISTING**

IAPMO Research and Testing, Inc. is a professional testing organization that provides independent testing services to assist manufacturers in demonstrating compliance with applicable regulatory requirements. IAPMO Research and Testing, Inc. is not a government agency and does not enforce any regulatory requirements. IAPMO Research and Testing, Inc. is not responsible for the design, construction, installation, or use of any product or system. IAPMO Research and Testing, Inc. is not responsible for any damage or injury resulting from the use of any product or system. IAPMO Research and Testing, Inc. is not responsible for any damage or injury resulting from the use of any product or system.

THIS CERTIFICATE IS NOT VALID UNLESS IT IS USED IN CONJUNCTION WITH THE LISTED PRODUCT.

Effective Date: December 2015      Rev: 1/28/2020      Valid Until: December 2026

Product: **Flashing Shower Components**      File No. 10253

Issued To: **Apex Building Co., Ltd.**  
1700-1705 1st Street  
International District  
San Francisco, CA 94103  
China

**Identification:** Products shall be marked with manufacturer's name or trademark, a permanent "File no" with date in accessible location only. The product shall also bear the UPC® certification mark. Markings shall be by means of either a permanent mark on the product, a label on the product or a tag attached to the product.

**Characteristics:** Flashing shower components manufactured to various codes, including but not limited to the International Building Code (IBC) and the International Residential Code (IRC), which may or may not have an approved listing agency. Components are to be installed for use in accessible locations only. To be installed in accordance with the manufacturer's literature, and the latest edition of the Building Flashing Code and National Flashing Code of Canada.

**Reference:** Listed on this certificate have been tested by an IAPMO R&T recognized laboratory. This recognition has been granted based upon the:

*Tom Volting*      *Ron Ching*

This listing is based on the information provided by the manufacturer. IAPMO Research and Testing, Inc. is not responsible for the design, construction, installation, or use of any product or system. IAPMO Research and Testing, Inc. is not responsible for any damage or injury resulting from the use of any product or system. IAPMO Research and Testing, Inc. is not responsible for any damage or injury resulting from the use of any product or system.

**IAPMO RESEARCH AND TESTING, INC.**  
5001 East Philadelphia Street, Ontario, California 91761-2816 • USA • 909-473-4100 • 909-473-4244 • www.iapmo.com





**CERTIFICATE OF LISTING**

IAPMO Research and Testing, Inc. is a professional testing organization that provides independent testing services to assist manufacturers in demonstrating compliance with applicable regulatory requirements. IAPMO Research and Testing, Inc. is not a government agency and does not enforce any regulatory requirements. IAPMO Research and Testing, Inc. is not responsible for the design, construction, installation, or use of any product or system. IAPMO Research and Testing, Inc. is not responsible for any damage or injury resulting from the use of any product or system. IAPMO Research and Testing, Inc. is not responsible for any damage or injury resulting from the use of any product or system.

THIS CERTIFICATE IS NOT VALID UNLESS IT IS USED IN CONJUNCTION WITH THE LISTED PRODUCT.

Effective Date: December 2015      Valid Until: December 2026

Product: **Flashing Shower Fixtures**      File No. 10253

Issued To: **Apex Building Co., Ltd.**  
1700-1705 1st Street  
International District  
San Francisco, CA 94103  
China

**Identification:** Flashing shower fixtures including wall and deck drains shall be marked with the manufacturer's registered name, trademark, or other mark or, in the case of private labeling, the name, trademark or other mark of the customer for whom the fixture was manufactured. The marking shall be accompanied by one of a permanent mark or by placing a permanent label on the product. Markings on products using listing shall be visible after installation.


**Characteristics:** Single-handle, single-control, and automatic compensating valve back and shower valves shall have identifiable temperature control settings in which the settings are indicated by words "Hotter", "Warmer", "Cooler", etc.; by numbers, or graphically.

**Reference:** Listed on this certificate have been tested by an IAPMO R&T recognized laboratory. This recognition has been granted based upon the:

*Tom Volting*      *Ron Ching*

This listing is based on the information provided by the manufacturer. IAPMO Research and Testing, Inc. is not responsible for the design, construction, installation, or use of any product or system. IAPMO Research and Testing, Inc. is not responsible for any damage or injury resulting from the use of any product or system. IAPMO Research and Testing, Inc. is not responsible for any damage or injury resulting from the use of any product or system.

**IAPMO RESEARCH AND TESTING, INC.**  
5001 East Philadelphia Street, Ontario, California 91761-2816 • USA • 909-473-4100 • 909-473-4244 • www.iapmo.com





**CERTIFICATE OF LISTING**

IAPMO Research and Testing, Inc. is a professional testing organization that provides independent testing services to assist manufacturers in demonstrating compliance with applicable regulatory requirements. IAPMO Research and Testing, Inc. is not a government agency and does not enforce any regulatory requirements. IAPMO Research and Testing, Inc. is not responsible for the design, construction, installation, or use of any product or system. IAPMO Research and Testing, Inc. is not responsible for any damage or injury resulting from the use of any product or system. IAPMO Research and Testing, Inc. is not responsible for any damage or injury resulting from the use of any product or system.

THIS CERTIFICATE IS NOT VALID UNLESS IT IS USED IN CONJUNCTION WITH THE LISTED PRODUCT.

Effective Date: March 2015      Valid Until: March 2024

Product: **Flashing Shower Fixtures - Components**      File No. 901938

Issued To: **Engle Market Overlap Technology Co., Ltd.**  
1700-1705 1st Street  
International District  
San Francisco, CA 94103  
China

**Identification:** Each fitting component shall be permanent legible markings to identify the manufacturer. This marking shall be the trade name, trademark, or other mark shown in the manufacturer's literature. The marking shall also bear the UPC® certification mark. Markings shall be by means of either a permanent mark on the product, a label on the product or a tag attached to the product. The marking shall be visible after installation. The marking shall also bear the UPC® certification mark along with the term "CERTIFIED" above.

**Characteristics:** Flashing Shower fitting components to be installed in accordance with the manufacturer's literature and the requirements of the latest edition of the Building Flashing Code.

**Reference:** Listed on this certificate have been tested by an IAPMO R&T recognized laboratory. This recognition has been granted based upon the laboratory's compliance to the applicable requirements of ISO/IEC 17025.

**Reference see in compliance with the following code(s):**  
Building Flashing Code (BFC)

*Tom Volting*      *Ron Ching*

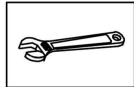
This listing is based on the information provided by the manufacturer. IAPMO Research and Testing, Inc. is not responsible for the design, construction, installation, or use of any product or system. IAPMO Research and Testing, Inc. is not responsible for any damage or injury resulting from the use of any product or system. IAPMO Research and Testing, Inc. is not responsible for any damage or injury resulting from the use of any product or system.

## BEFORE INSTALLATION

### ► Notes before installation

1. Please check that all components are present.
2. Before installation ensure that all feed lines are clear of debris and on/off valve is present.
3. Pictures in the manual are general in content and may not represent exactly your purchased faucet.  
If you are having difficulties please contact a professional plumber.
4. If you will be away from home for an extended period you should shut off the main water supply.

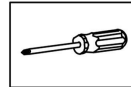
### ► Recommend Tools And Materials



Adjustable Wrench



Hexagon wrench

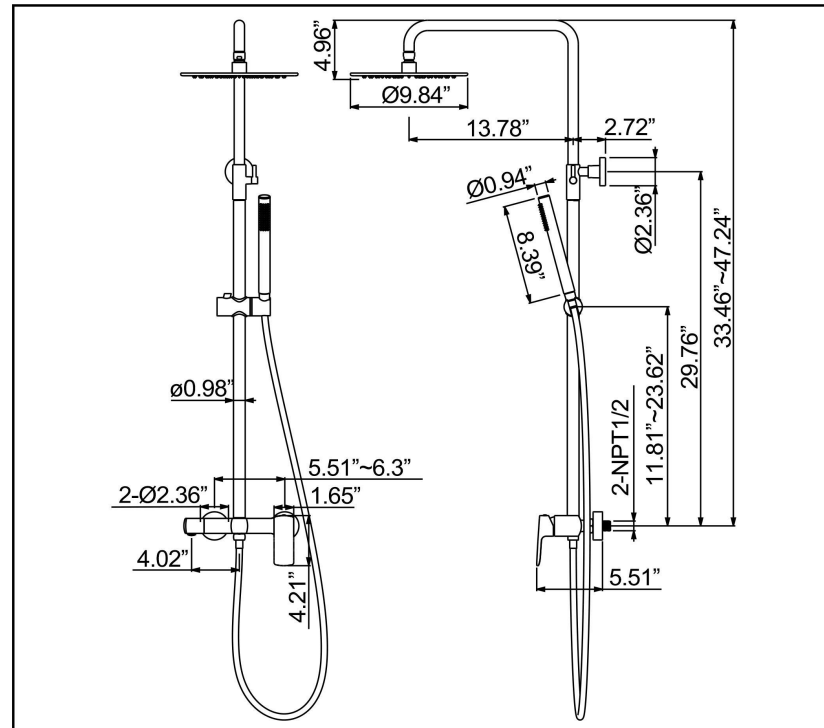


Philips Screwdriver



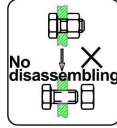
Pipe Tape

### ► Installation Dimension

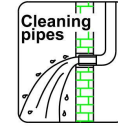


## INSTALLATION STEPS

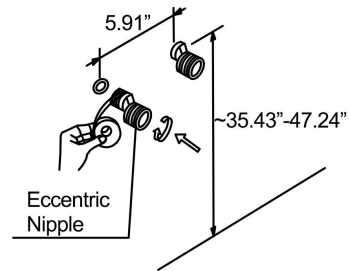
This product has been inspected and debugged by the factory to the best condition. Please do not disassemble and assemble it yourself.



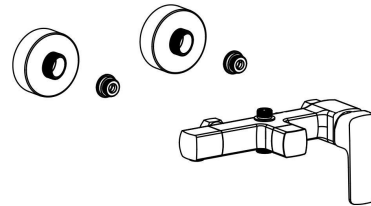
Before installing the product, please be sure to remove sundries and sludge from the water pipe to prevent sundries from blocking the product.



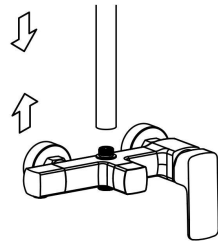
1. As shown, install the accessories and attach the tape.



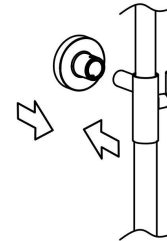
2. Install the main body and rubber pad.



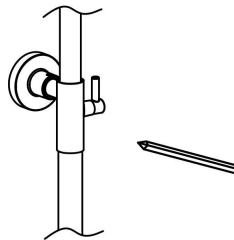
3. Install the riser on the faucet.



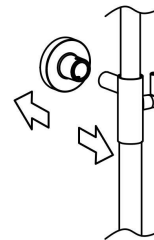
4. Install the mounting piece on the shower arm.



5. Make sure the riser is level, mark the position of the screw holes.

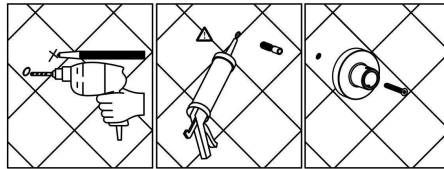


6. Remove the riser and the mounting piece.

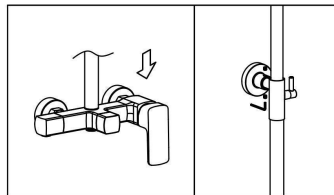


## INSTALLATION STEPS

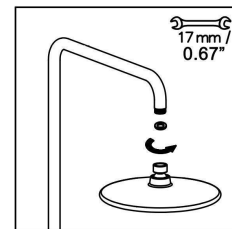
7. Drill the screw holes and install the anchors.  
Install the mounting piece and mounting piece seal.



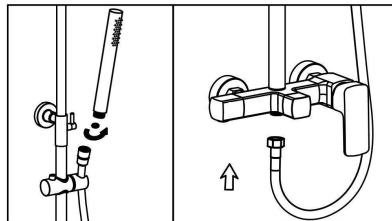
8. Install the riser on the faucet,  
tighten the screw.



9. Install the shower rain head.



10. Place the hose washer in the short hose end connection. Connect this end of the hose to the faucet. Place the screen washer in the long hose end connection. Install the hand shower on this end of the hose. Rest the hand shower in the holder.



## CLEANING CARE

In order to keep the appearance of product clean, bright and good performance, please take care of the product as follows;

1. Rinse with water only and dry with soft cotton cloth;
2. Use mild liquid and colorless glass cleaner to remove surface dirt and scale film, or use polish without abrasive effect;
3. Do not use abrasive detergent, polish, emery cloth, paper towel or scraper, etc;
4. Do not use acid cleaner, or cleaner and soap with insoluble gran etc;
5. In the process of use, mud may accumulate in the bubbler and make the water flow slow. The bubbler can be unscrewed, rinsed with water, and then installed back in place.





**AQUA  
GALLERY**