


# LED PUCK LIGHT





INSTRUCTIONS PERTAINING TO RISK OF FIRE OR INJURY  
TO PERSONS READ ALL INSTRUCTIONS

**IMPORTANT SAFETY  
INSTRUCTIONS**

**SAVE THESE INSTRUCTIONS**

## TOOLS AND MATERIALS REQUIRED:



Phillips  
Screwdriver



Wire Cutters



Pliers

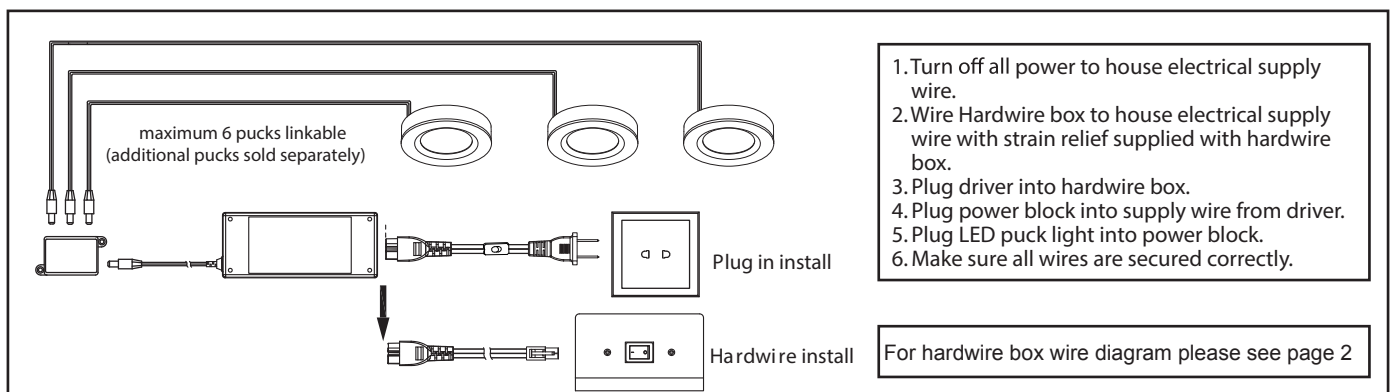


Wrench

Wiring supplies  
as required by  
local electrical  
code

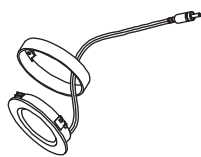
## CAUTIONS:

1. Installation, Operating and Safety Instructions - Instructions for installation and use of this product are provided by the manufacturer.
2. To reduce the risk of fire, do not install in a compartment smaller than 12 inches by 12 inches by 12 inches".
3. For under cabinet or shelf mount only.



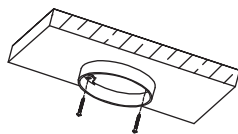
### Surface Mount Installation

Step 1



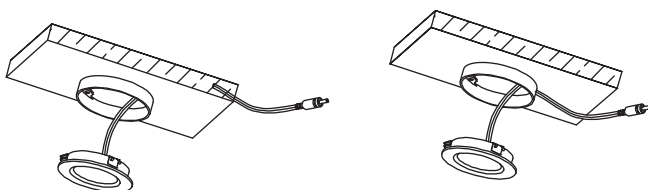
Using hands, separate outer shell from LED lamp.

Step 2



Using included hardware and a screw driver, secure outer shell to cabinet surface.

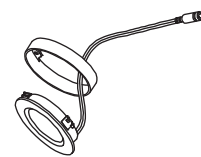
Step 3



Feed connecting cord through a pre-drilled hole in the cabinet surface or through the cut-out of the outer shell. Secure LED lamp into outer shell.

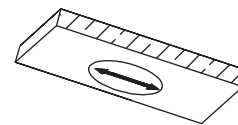
### Recessed Installation

Step 1



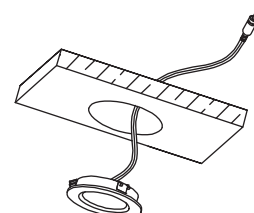
Using hands, separate outer shell from LED lamp.

Step 2



Cut out from the bottom of the cabinet a hole using a 2.5" hole saw.

Step 3



Feed connecting cord through the hole in cabinet and secure LED lamp.

# Hardwire Box and HUB Installation Instruction (JUNCTION BOX SOLD SEPERATELY)

