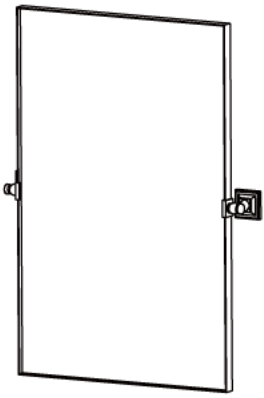
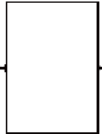


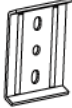







# MOUNTING INSTRUCTIONS

## Contents:



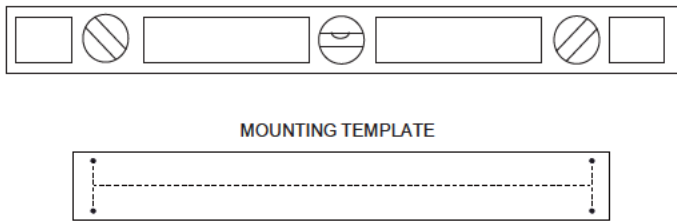
								
Mirror X1	Bracket X2	Ball Finial X2	Plate X2	Setscrew X2	Screw X4	Anchor X4	Wrench X1	position map X1



**Missing Hardware:** The parts are been carefully packed within a red bag and inserted in the styrofoam. Please check again in case you do not find the parts. If your order indeed arrives missing hardware, please do not worry, and feel free to reach out to us for help, we will ship you the replacement ASAP.

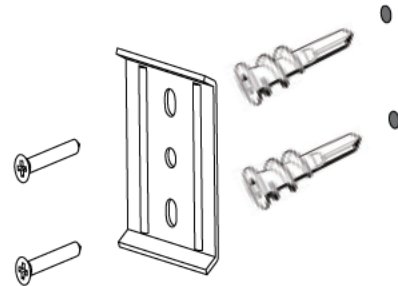
The hardware included with this item is meant for dry wall mounting only. If other wall types, please consult your local hardware store for assistance

**1**



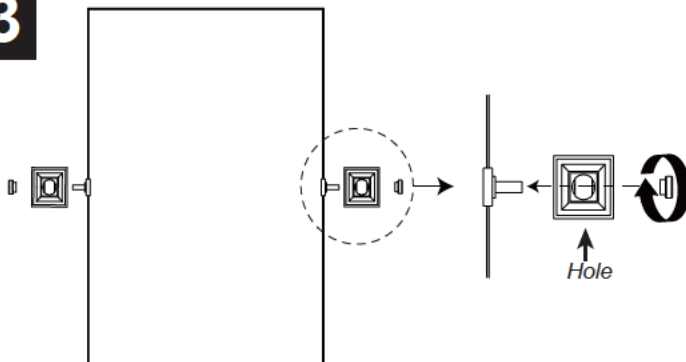
Paste the **position map** horizontally on the position to be installed and mark it with a pencil.

**2**



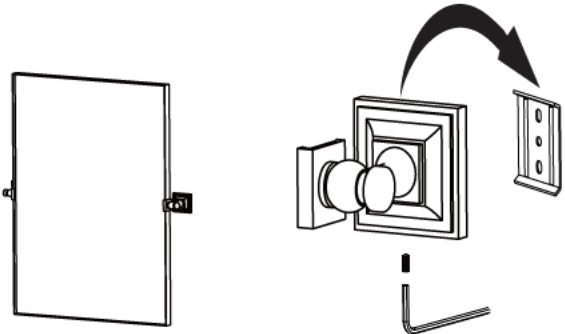
Drill four 1/8" pilot holes in wall for each **Plate**. Screw the plastic **Anchors** into the holes until flush. Secure the **Plates** onto the anchors with the **Screws**.

**3**



Attach **Brackets** to **Mirror** with **Ball Finials**, with the small holes in the **Brackets** facing down.

**4**



Hook the **Brackets** (holes down) over the **Plates**. Be sure the **Brackets** catch the upper lip on the **Plates**. Secure with the **Setscrews** from below.

## Cleaning

Avoid using commercial or abrasive cleaners. Using only a soft damp cloth will preserve the finish.