

NOTES:

1. UPPER TRACK: Secure to header, see TSDC "Recommended Mounting Hardware" (below) for screw types and sizes. Screws provided by installer.

2. BOTTOM TRACK: Secure to finished flooring using clear silicone (not provided). Ramps were shown per plan. **Bottom Track Sits back from Upper Track by 7/8". (SEE S1)**

3. GLAZING: As shown in diagram **A1**.

4. BEAMS: Beams attach to columns and existing walls with an L-Connector. See installation instructions and hardware guide for recommended screw types.

SYSTEM DETAILS:

SYSTEM TYPE:

- FTS ROOM DIVIDER

RAIL/STILE TYPE:

- 1-1/2" ALUMINUM

FINISH:

- BLACK

GLASS TYPE:

- 5MM TEMPERED CLEAR GLASS

DESIGN:

- SOLO

ACCESSORIES:

- NO ACCESSORIES

OPENING

PAGE

GENERAL NOTES	1
PANEL GLAZING, A1	2
PLAN OVERVIEW, ISOMETRIC	3
SYSTEM SECTIONS, S1	4
SYSTEM DETAILS, D1	4
E1	5



Elevation / Detail Number
Page Number

FTS Systems Only

Recommended Mounting Hardware: *(Hardware provided by installer)*

Note: Hardware must penetrate structural material 1- 1/2" minimum.

A. Securing to Metal or Wood:
- #8x1-1/2" Washer head self-drilling sheet metal screws (with minimum pull-out force of 200lbs).

B. Securing to Wood:
- 1/4" dia. x 2-1/4" Concrete pull-out force of 800lbs). Screw/Anchor (with minimum

C. Securing to Gypsum Bd Ceiling:
- 1/4-20 Toggle bolt (with minimum pull-out force of 200lbs).

CUSTOMER APPROVAL: I HEREBY CONFIRM THAT I HAVE REVIEWED THE DESIGNS AND DIMENSIONS IN THIS DRAWING PACKAGE AND CONFIRM THAT THEY ARE IN AGREEMENT WITH THE DIMENSIONS AT THE JOBSITE FOR TOLERANCE AND CLEARANCE, I ALSO UNDERSTAND THAT IT IS THE SOLE RESPONSIBILITY OF THE CUSTOMER/CONTRACTOR TO CHECK THEIR CITY/ STATE BUILDING CODES TO ENSURE COMPLIANCE WITH TSDC PRODUCTS.

TITLE

WAYFAIR
GENERAL NOTES

	NAME	DATE
DRAWN BY	NN	05/11/22
REVISION		
SALES REP	Gil Ben-Zion	

DO NOT SCALE



PROPRIETARY NOTICE: THE INFORMATION CONTAINED HEREIN IS THE SOLE PROPERTY OF THE SLIDING DOOR COMPANY. ANY REPRODUCTION IN WHOLE OR IN PART WITHOUT THE EXPRESSED WRITTEN PERMISSION OF THE SLIDING DOOR COMPANY IS STRICTLY PROHIBITED.

CUSTOMER NAME

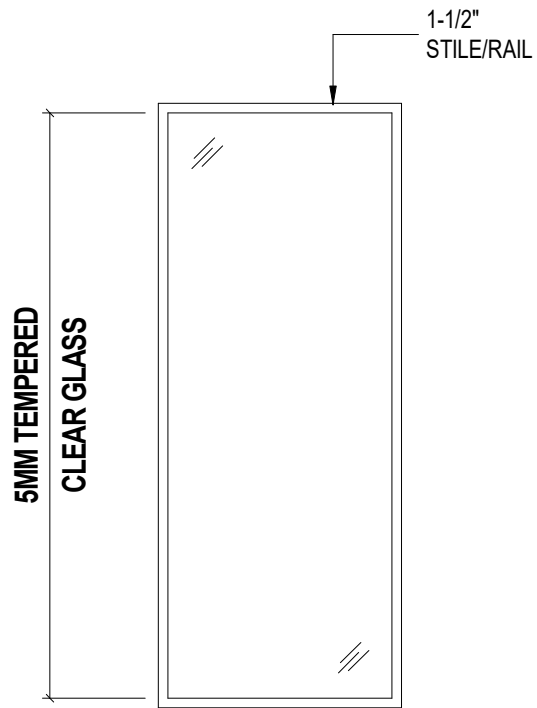
SIGNATURE

DATE APPROVED

ORDER #:

QTY: **1**

SHEET 1 OF 5



A1 TYPICAL PANEL GLAZING
NOTE 3 - E1 (FTS PANEL)

SEE SHEET 1



TITLE:

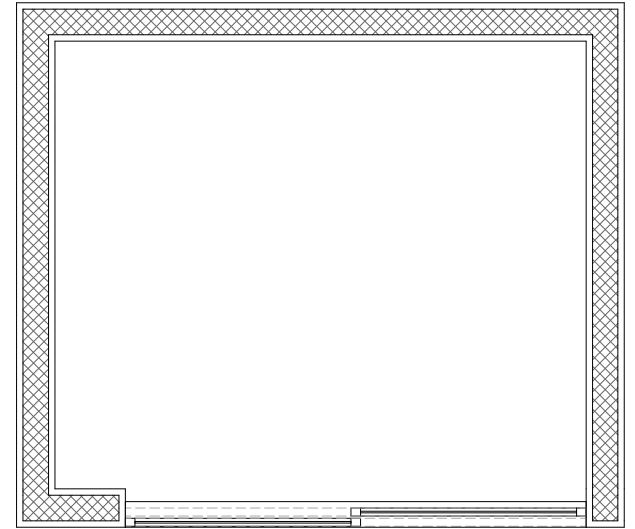
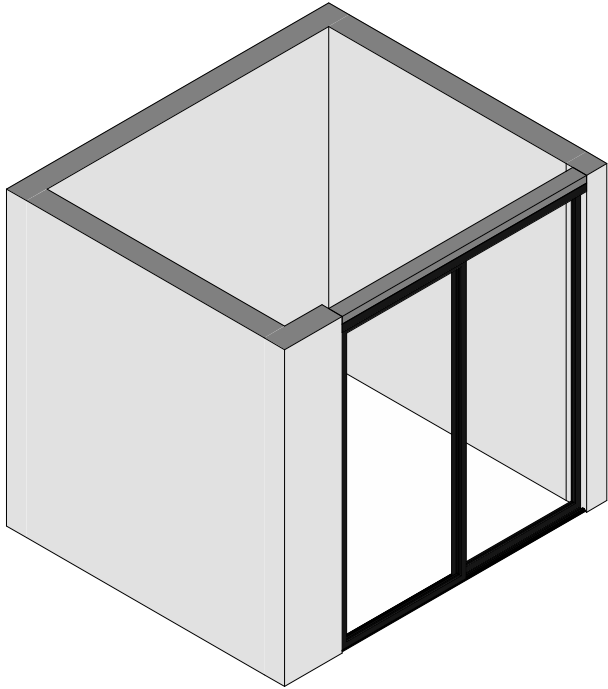
WAYFAIR
PANEL GLAZING

ORDER #:

INITIALS:

DO NOT SCALE

SHEET 2 OF 5



72"
ORDER / FINISHED OPENING WIDTH

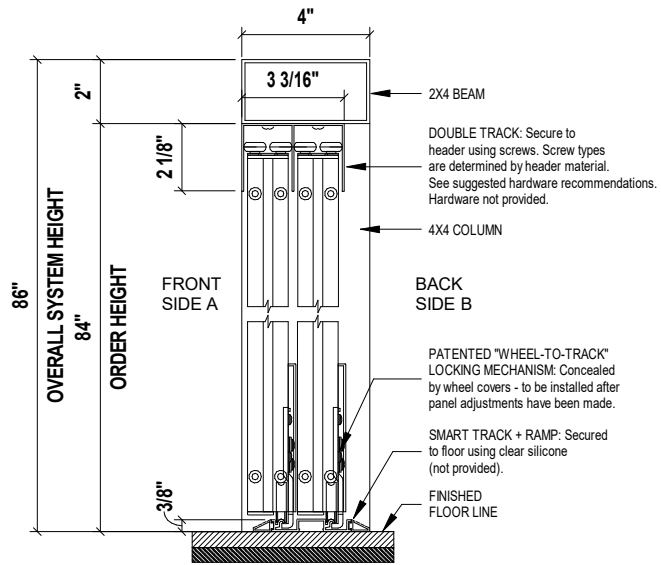
V1 ENTRY
ISOMETRIC: Scale None
DETAIL - E1 (FTS)

E1
5

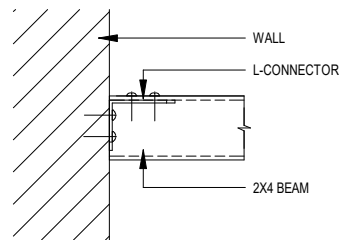
SEE SHEET 1



TITLE:	WAYFAIR PLAN OVERVIEW AND ISOMETRIC	ORDER #:	INITIALS:	DO NOT SCALE
				SHEET 3 OF 5



S1 FTS DOUBLE TRACK/PANEL TO 2X4 BEAM SECTION: Scale None
DETAIL - E1 (FTS)



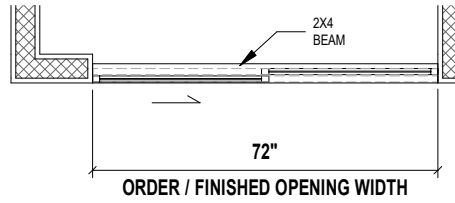
D1 2X4 BEAM TO WALL ATTACHMENT DETAIL: Scale None
DETAIL - NOTE 4

SEE SHEET 1

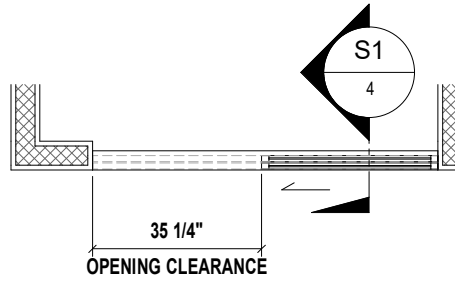


TITLE:	WAYFAIR SYSTEM SECTIONS AND DETAILS	ORDER #:	INITIALS:	DO NOT SCALE
				SHEET 4 OF 5

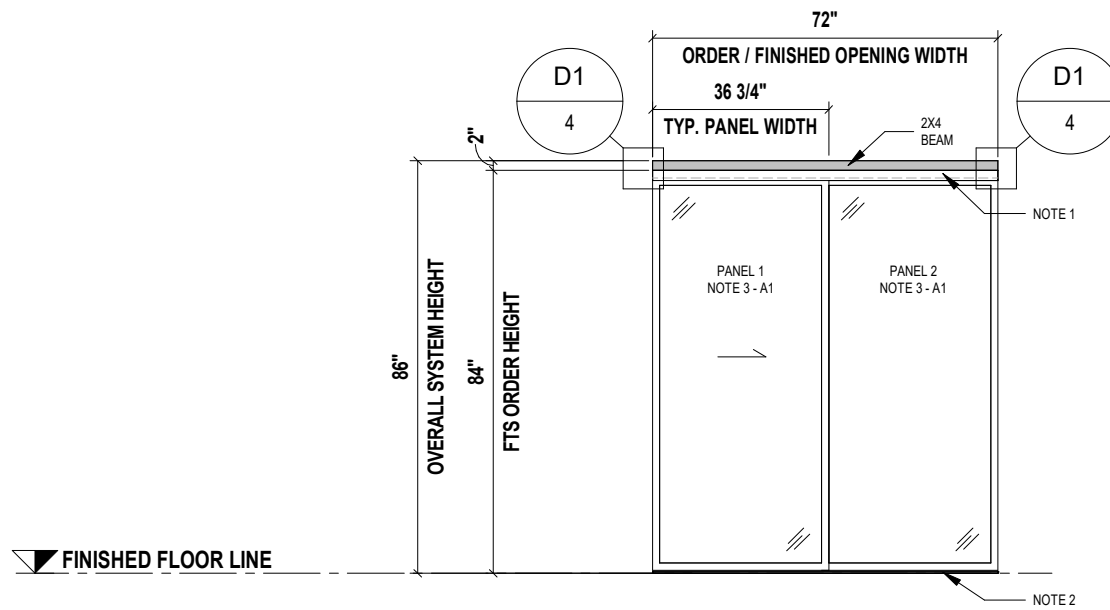
CLOSED POSITION



OPEN POSITION



OPENING 1 - ENTRY - PLAN: Scale None



E1 - ELEVATION: Scale None

SEE SHEET 1

TITLE:

**WAYFAIR
SYSTEM DETAILS**

ORDER #:

INITIALS:

DO NOT SCALE

SHEET 5 OF 5

