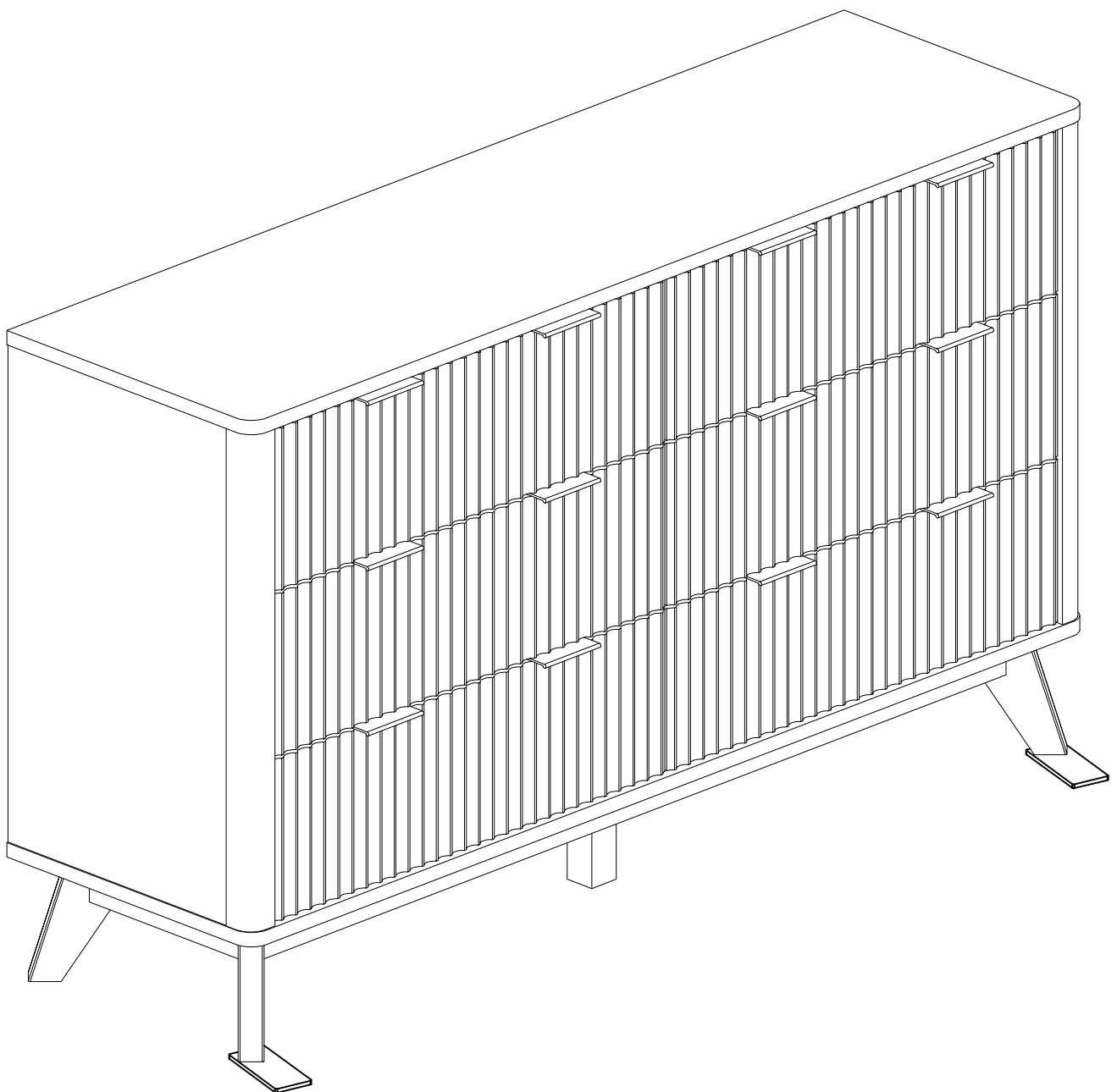
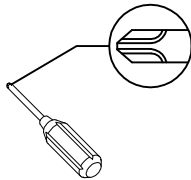


Assembly Instructions

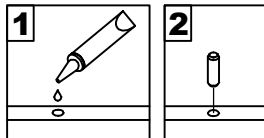


General Assembly Guidelines

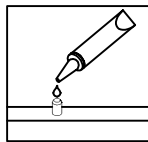
- I. Ensure that all parts and hardware are available before beginning assembly.
- II. Follow each step carefully to ensure the proper assembly of this product.
- III. Two people are recommended for ease in the assembly of this product.
- IV. A Phillips head screwdriver is required for the assembly of this product .



- V. The provided glue is to secure wood dowels in place . When first inserting dowels , locate the appropriate hole for the dowel , place a small amount of glue in the hole and insert the dowel . Wipe away excess glue immediately.

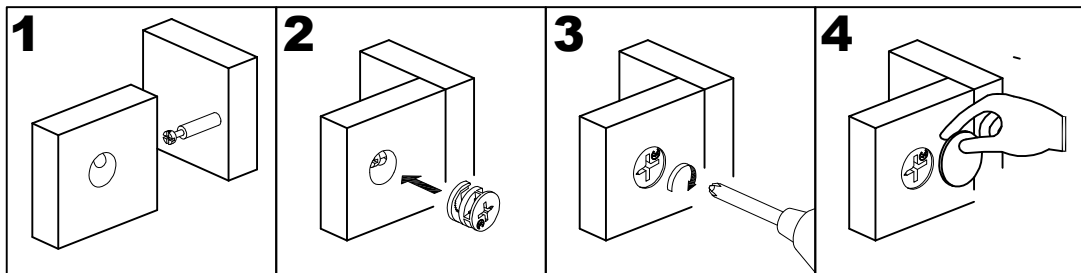


In future assembly steps when dowels are necessary to attach assembly parts together , place a small amount of glue on the end of the dowel before attaching parts together . Wipe away excess glue immediately.

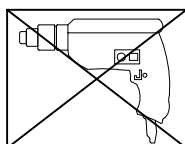


VI HOW THE KNOCK DOWN (KD) ASSEMBLY SYSTEM WORKS

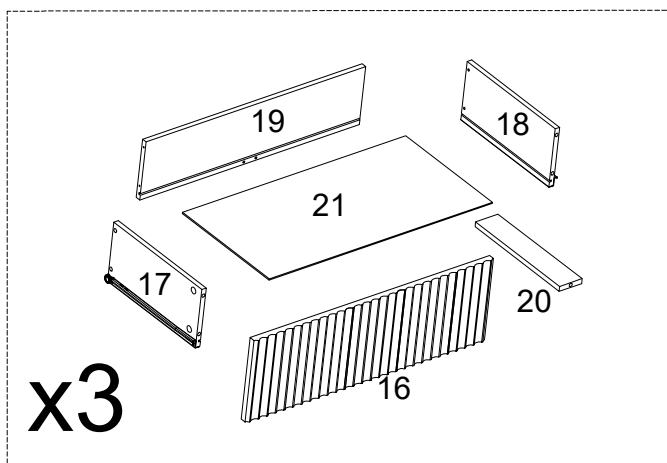
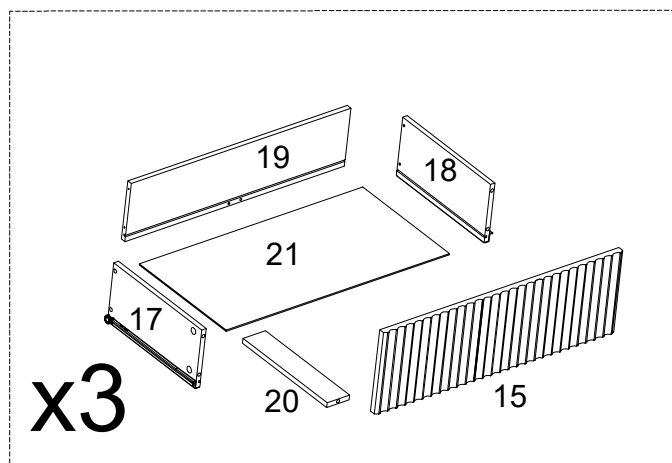
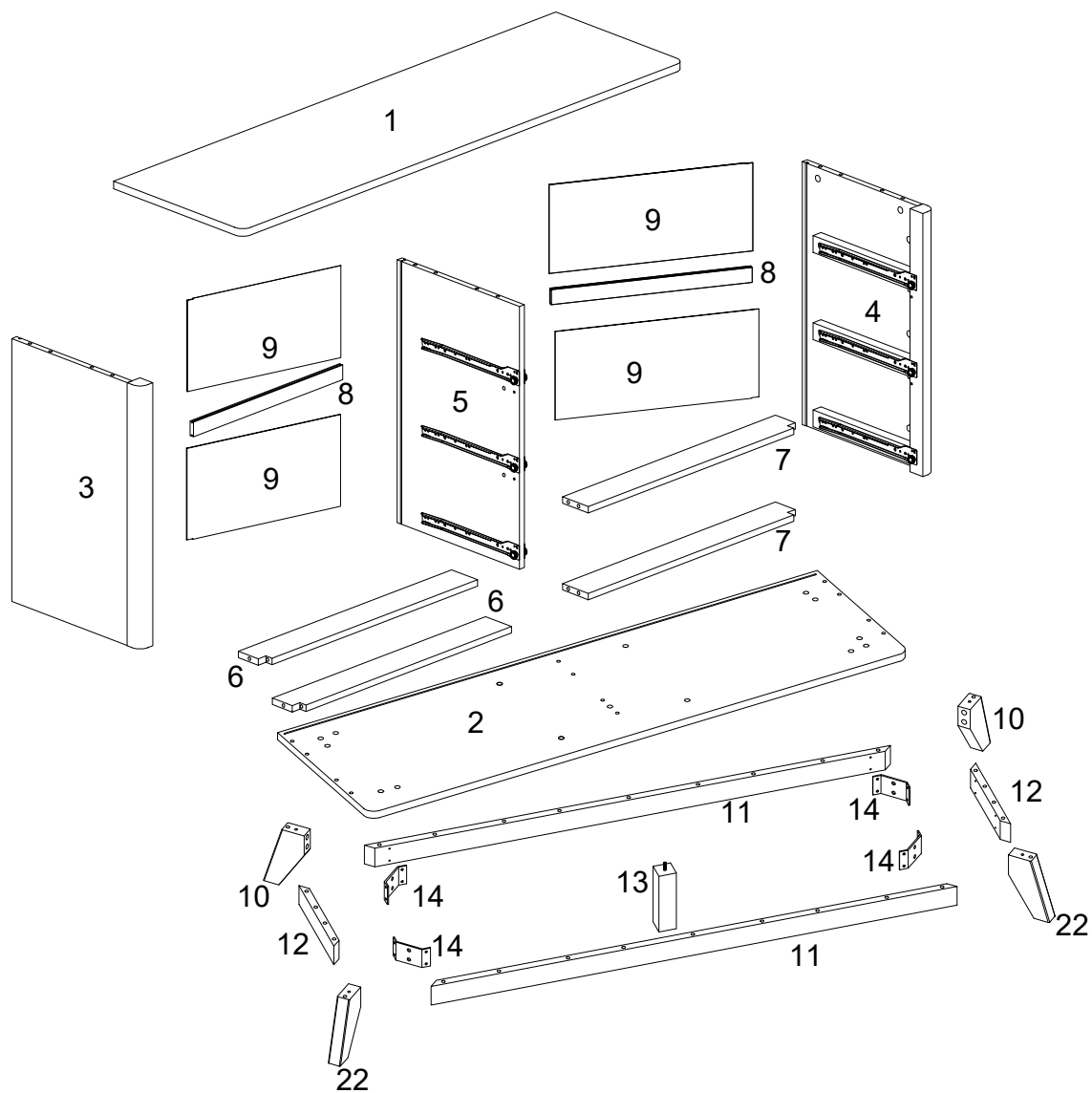
- 1.Screw the Cam Bolt into the pre-drilled hole on the panel. Make sure Cam Bolt goes into the pre-drilled hole on the end of panel for Cam Lock.
- 2.Insert the Cam Lock into the pre-drilled large hole on the panel. Make sure the arrow on the face of Cam Lock points towards Cam Bolt.
- 3.Take a Phillips screwdriver and rotate the Cam Lock clockwise to lock the Cam Bolt.
- 4.Use the sticker to conceal the Cam.




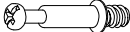



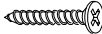
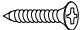
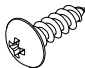
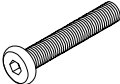
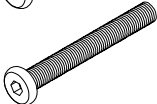

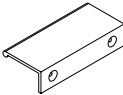
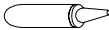
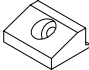
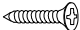

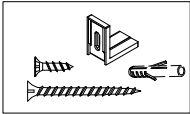

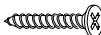
- VII. Power tools should not be used to assemble this product .

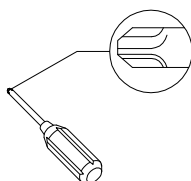


Parts List



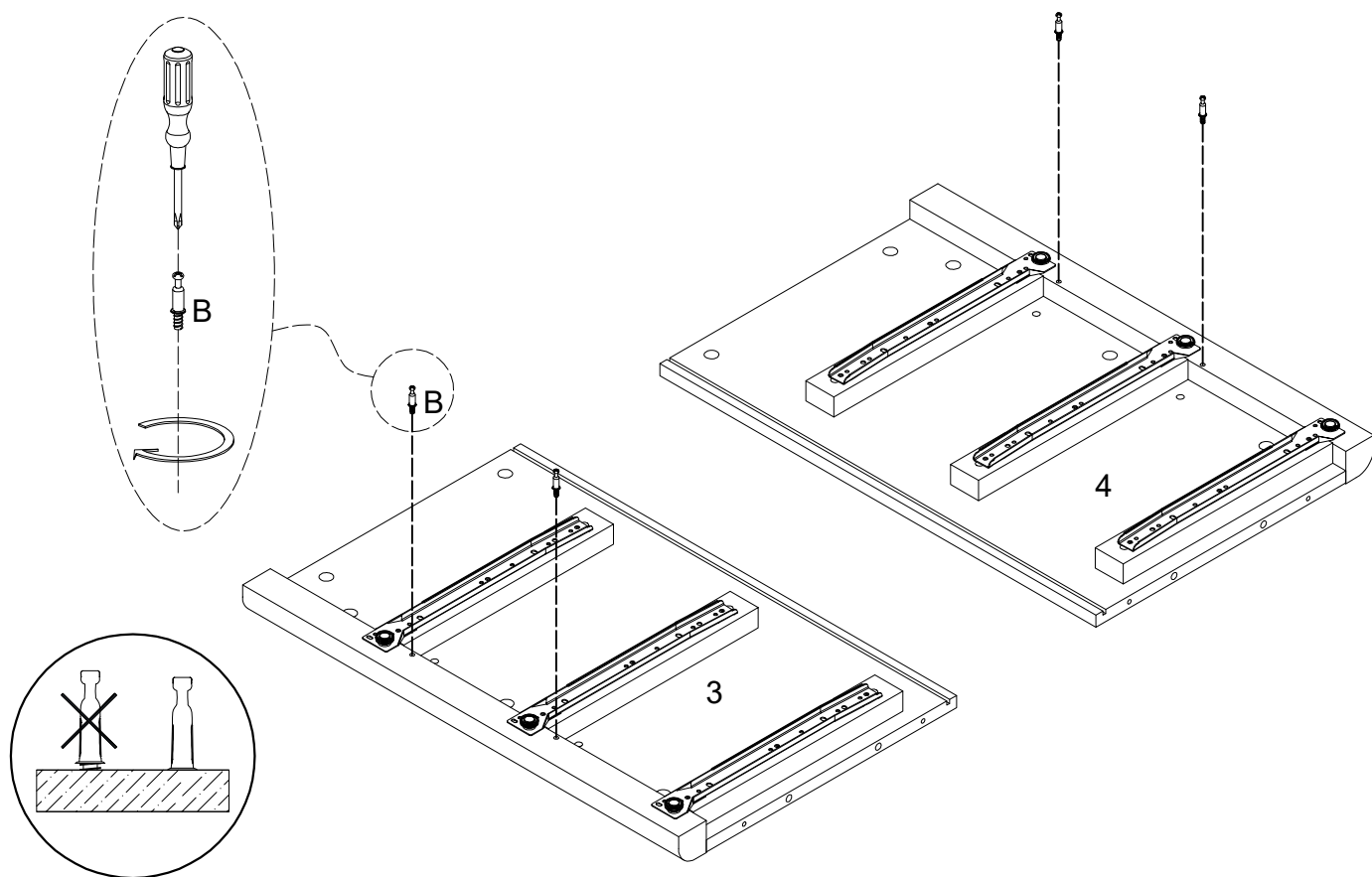
Hardware List

A		Ø8x30mm	Dowel	38 pcs
B		Ø6x35mm	Cam bolt	44 pcs
C		Ø15x11mm	Long cam lock	14 pcs
D		Ø30mm	Cam cover	24 pcs
E		Ø15x10mm	Short cam lock	30 pcs
F		Ø4x38mm	Screw	36 pcs
G		Ø3.5x12mm	Screw	24 pcs
H		Ø5x15mm	Screw	16 pcs
I		1/4"x28mm	Bolt	8 pcs
J		1/4"x50mm	Bolt	12 pcs
K		M4	Allen Wrench	1 pc
L			Handle	12 pcs
M			Glue tube	1 pc
N			Plastic wedge	16 pcs
O		Ø3x17mm	Flat-head screw	16 pcs
P		Ø6x50mm	Screw	10 pcs
Q			Tipping Restraint Hardware	1 set
R		110*48mm	Metal plate	2 pcs
S		Ø4x25mm	Screw	4 pcs

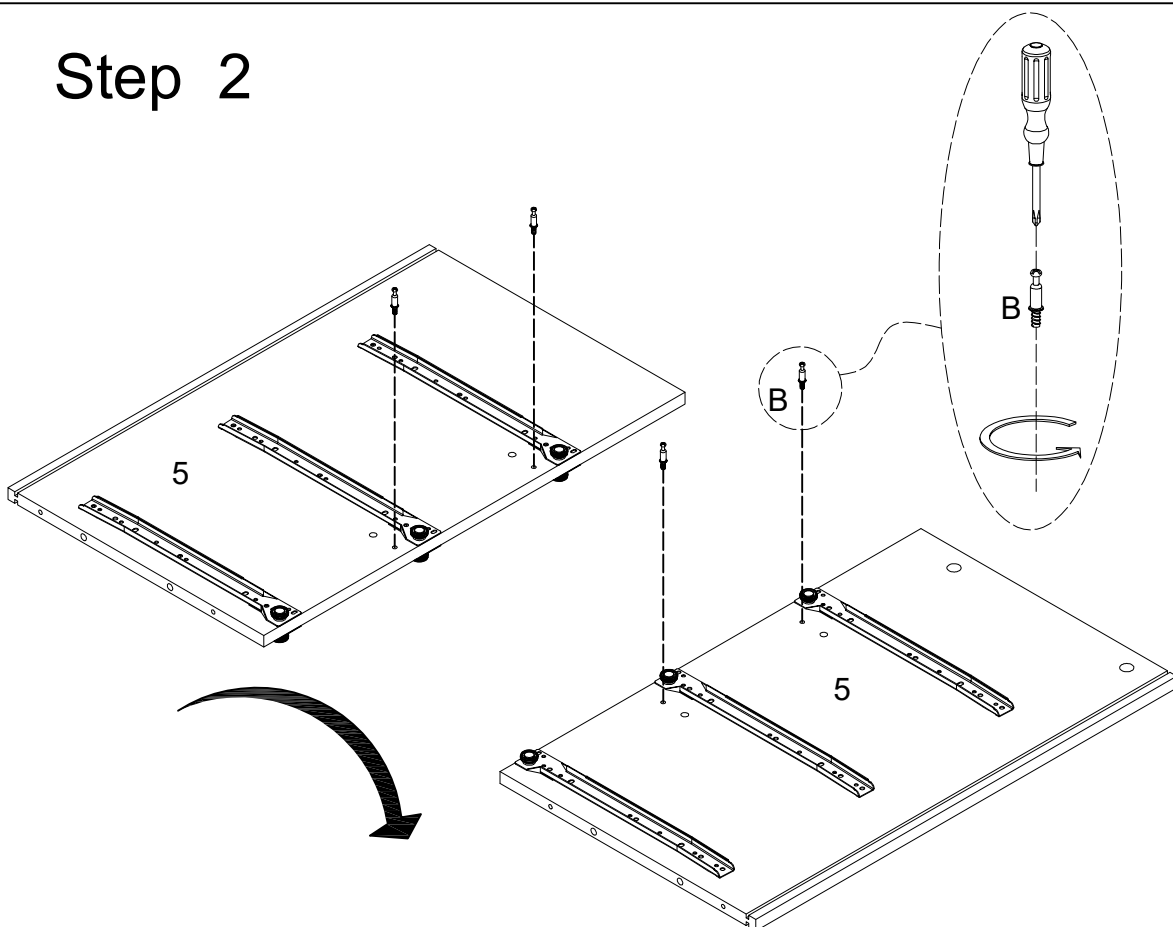


Philips head screwdriver required for assembly
(not included)

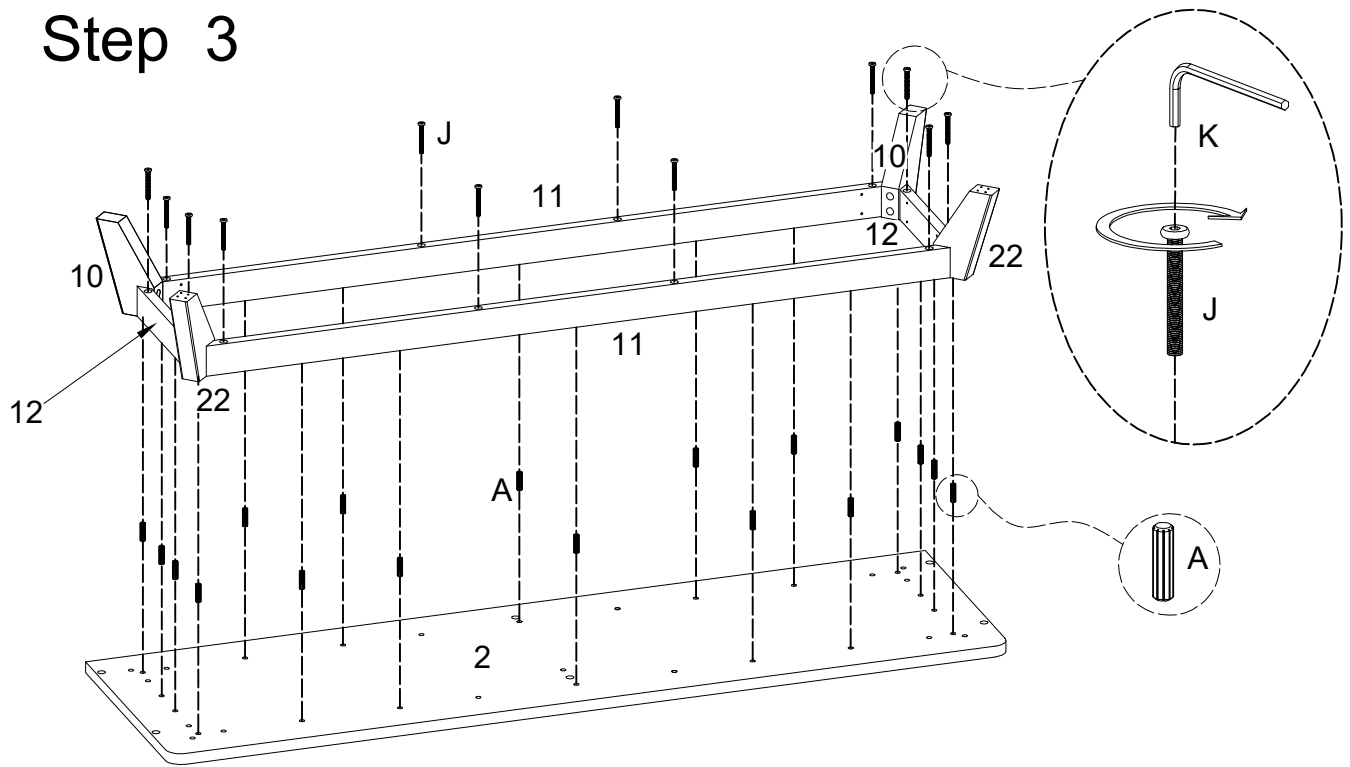
Step 1



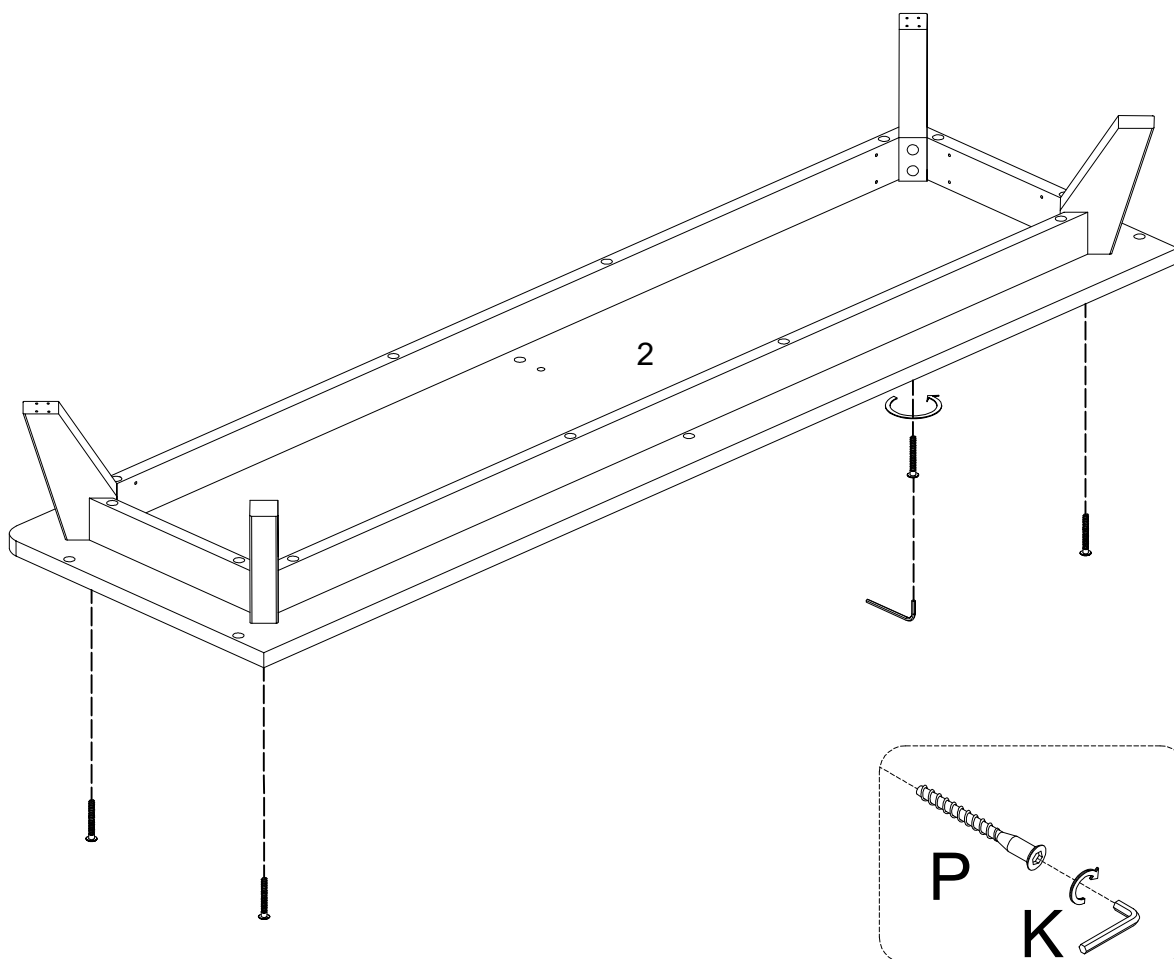
Step 2



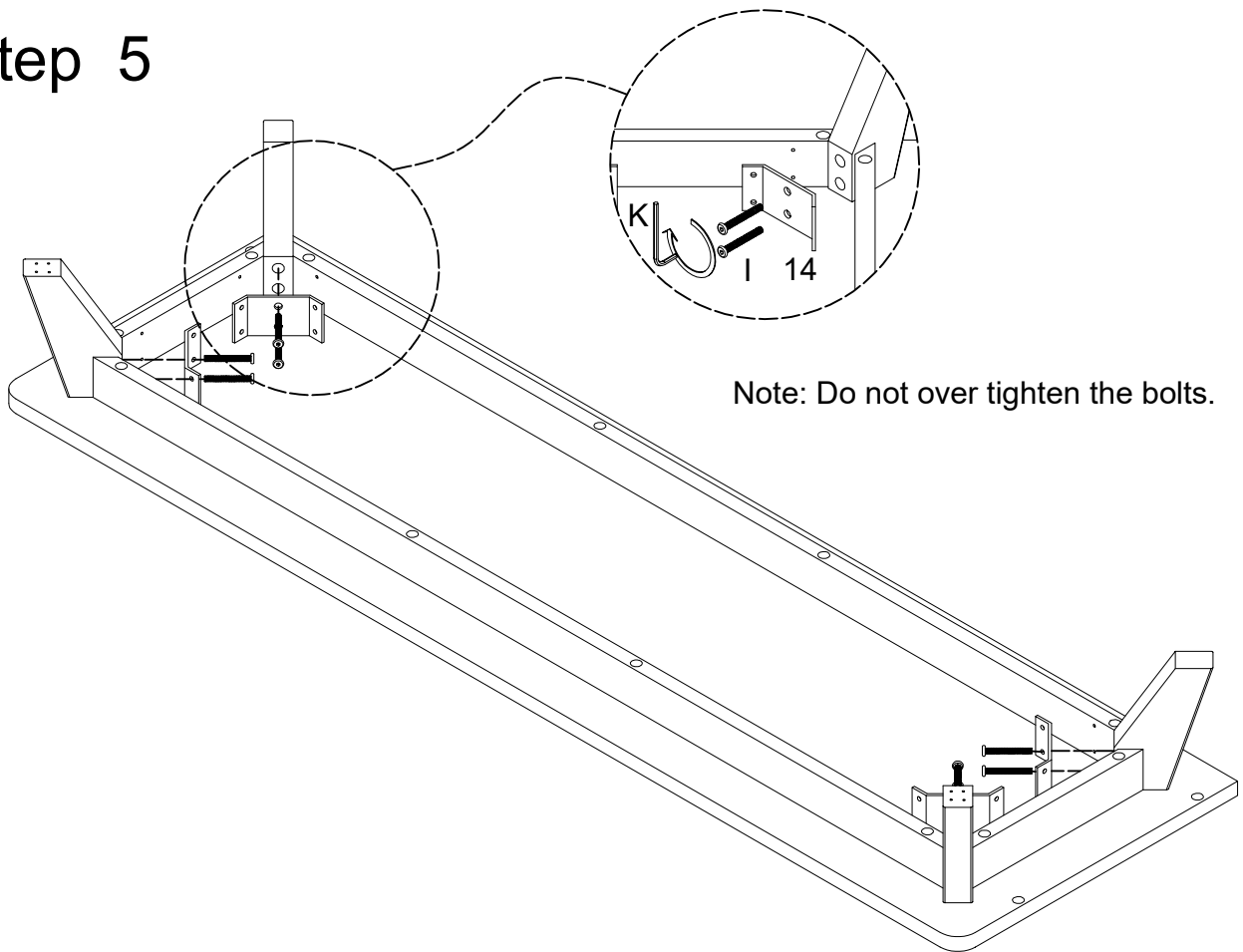
Step 3



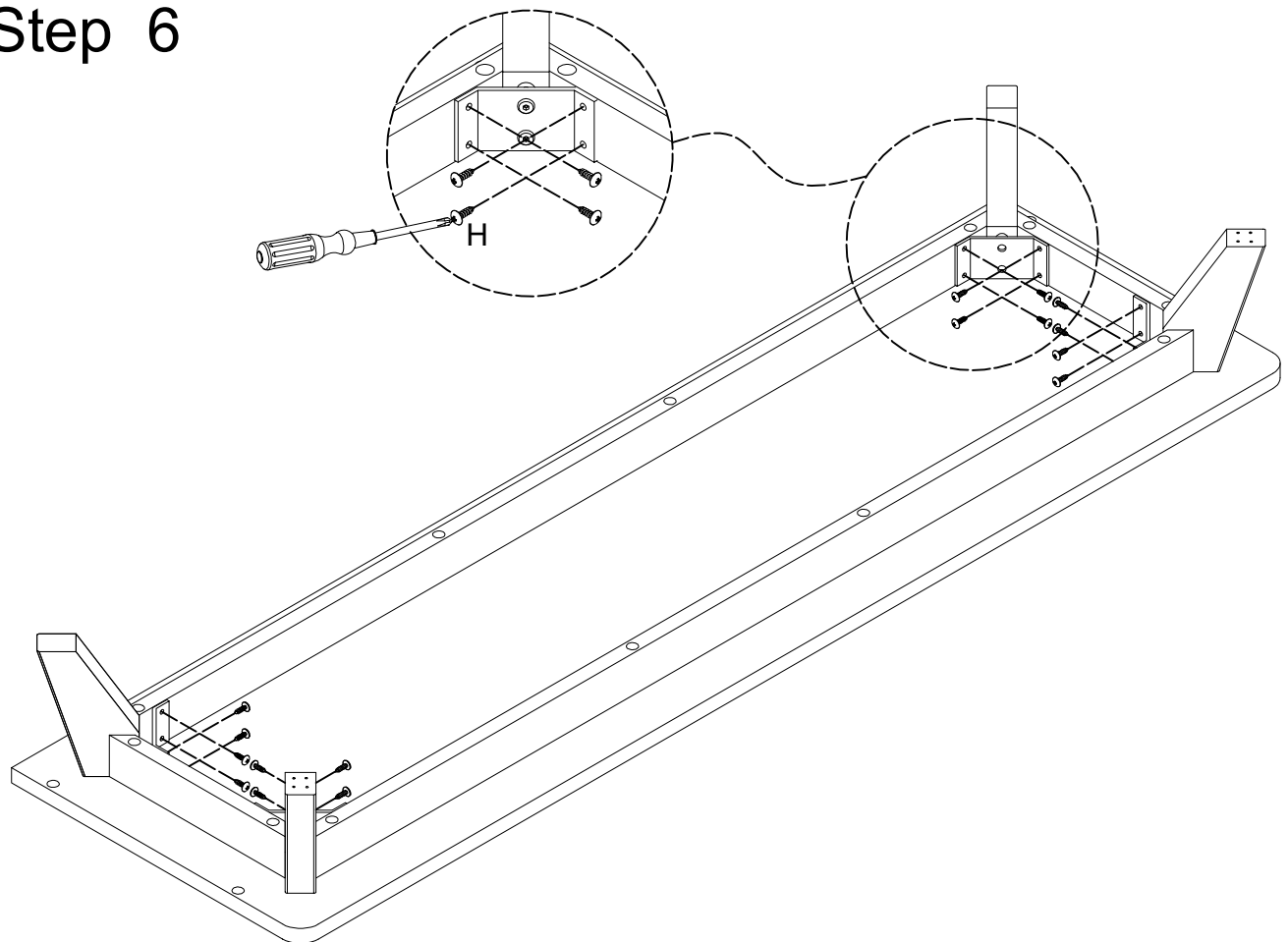
Step 4



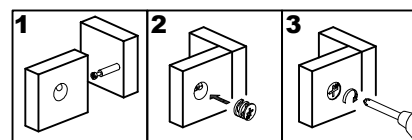
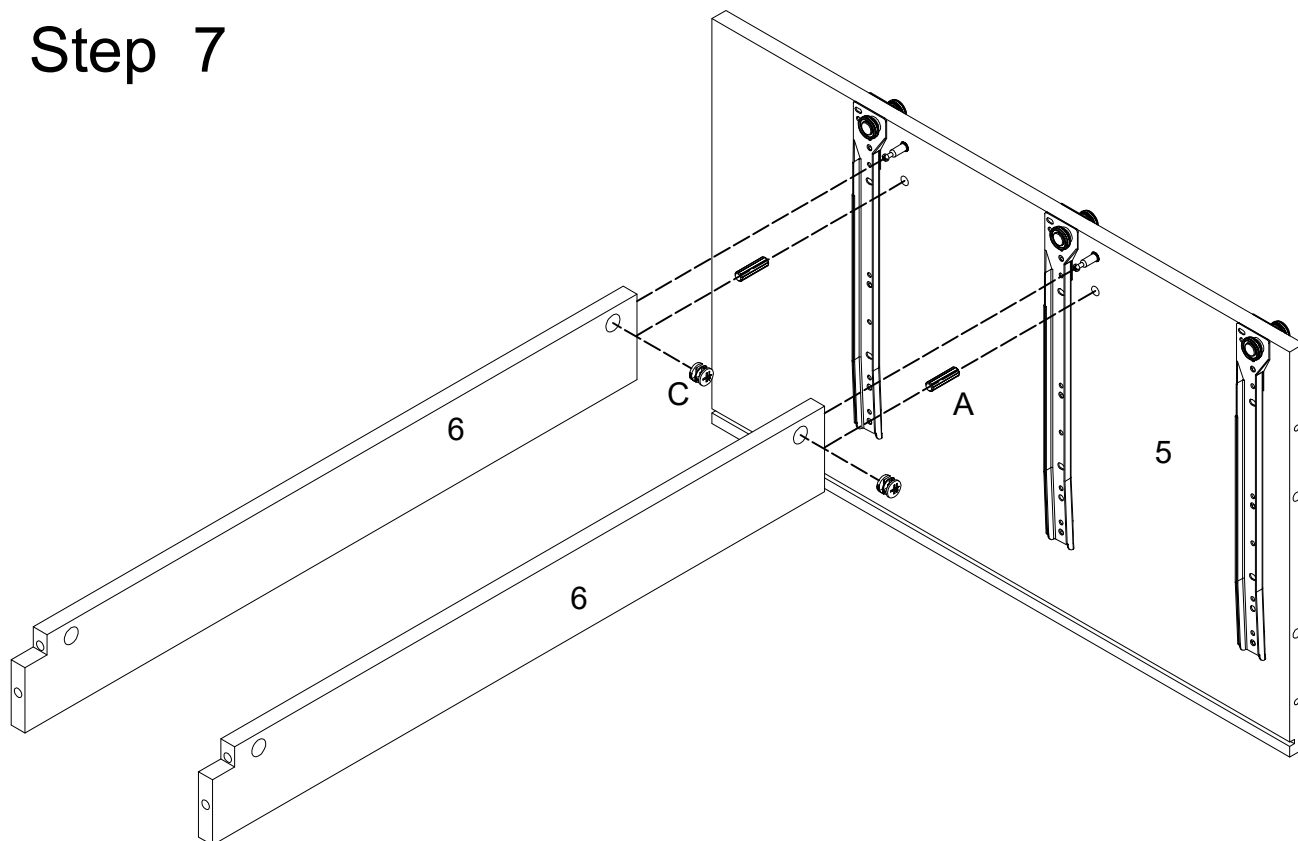
Step 5



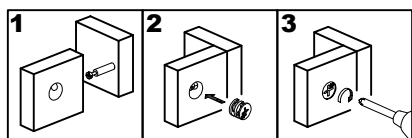
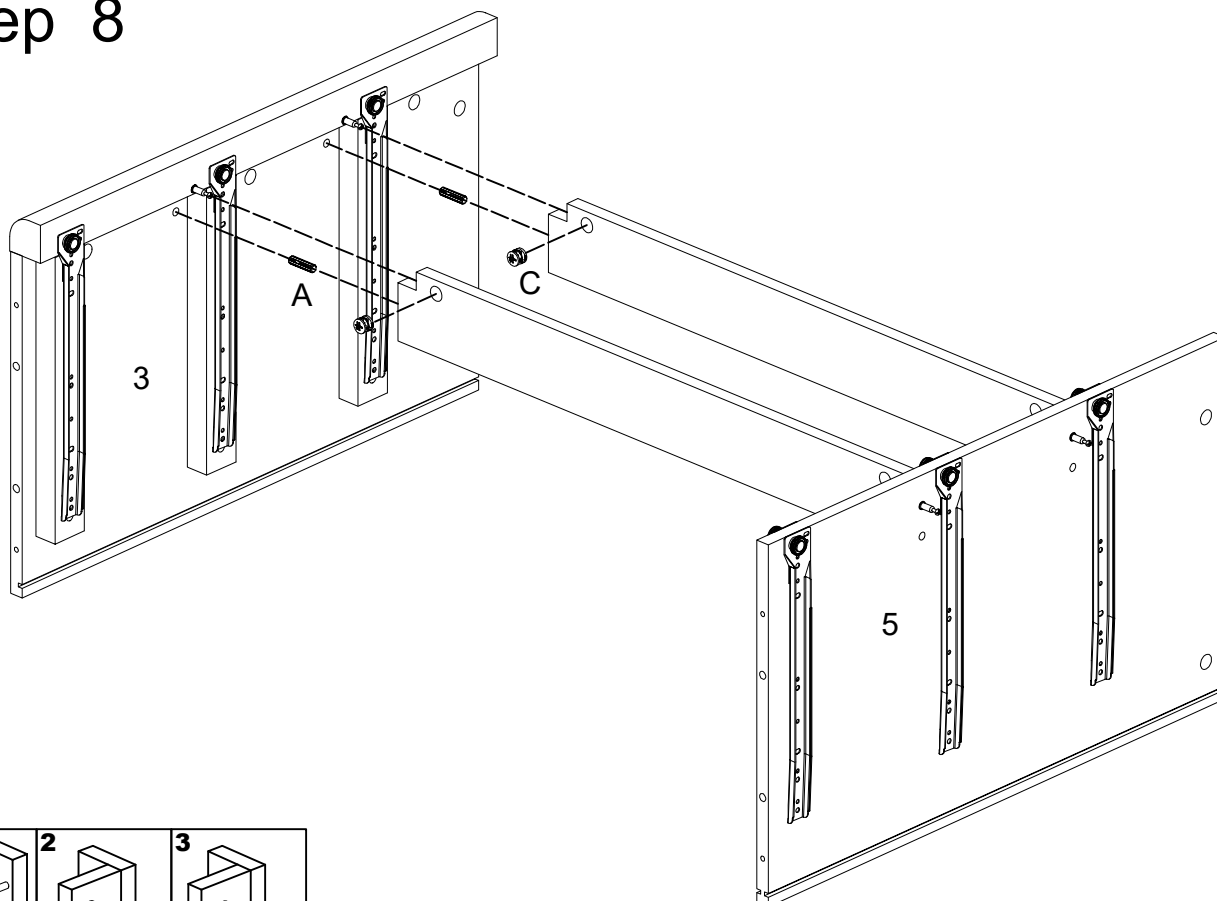
Step 6



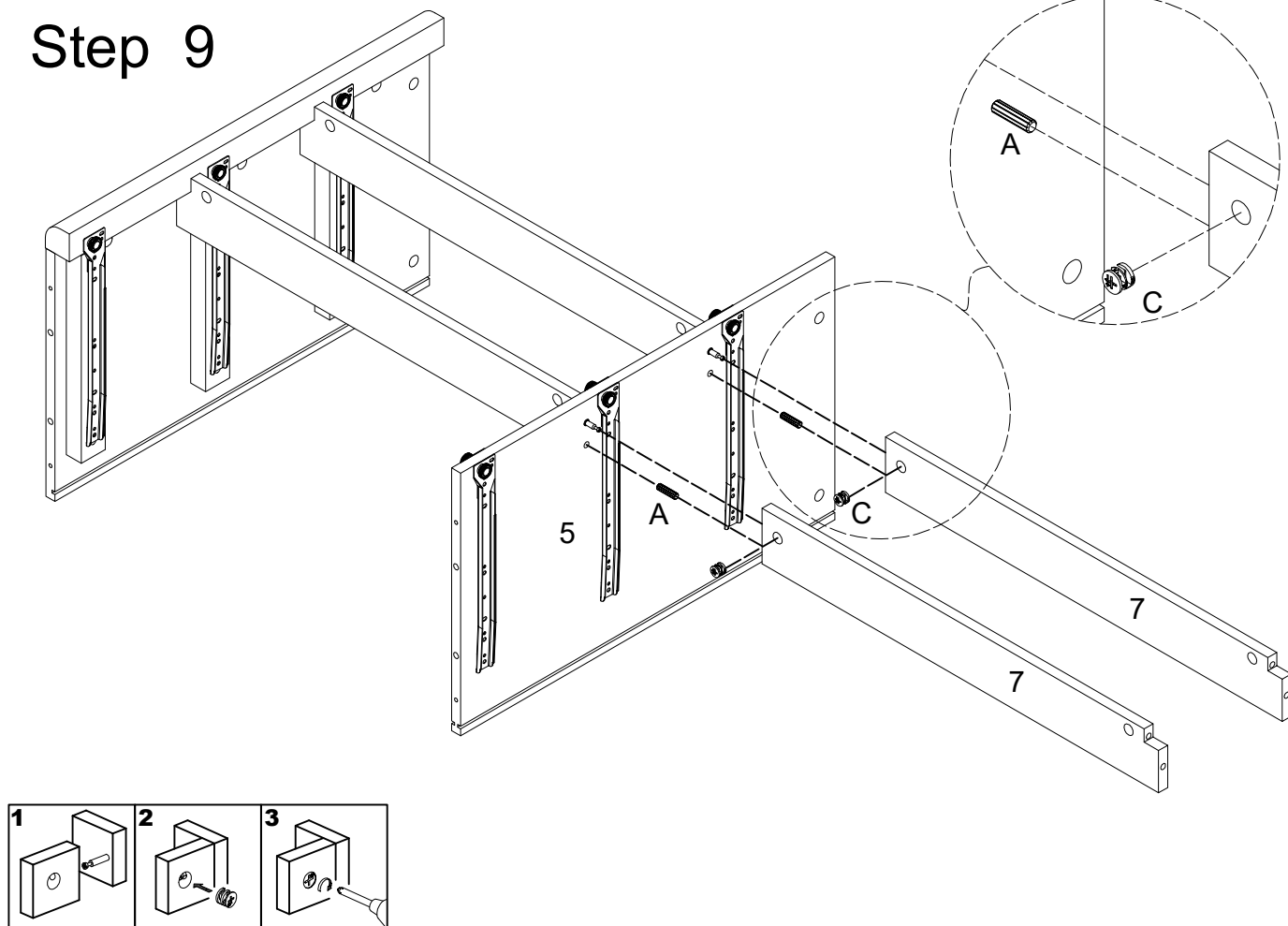
Step 7



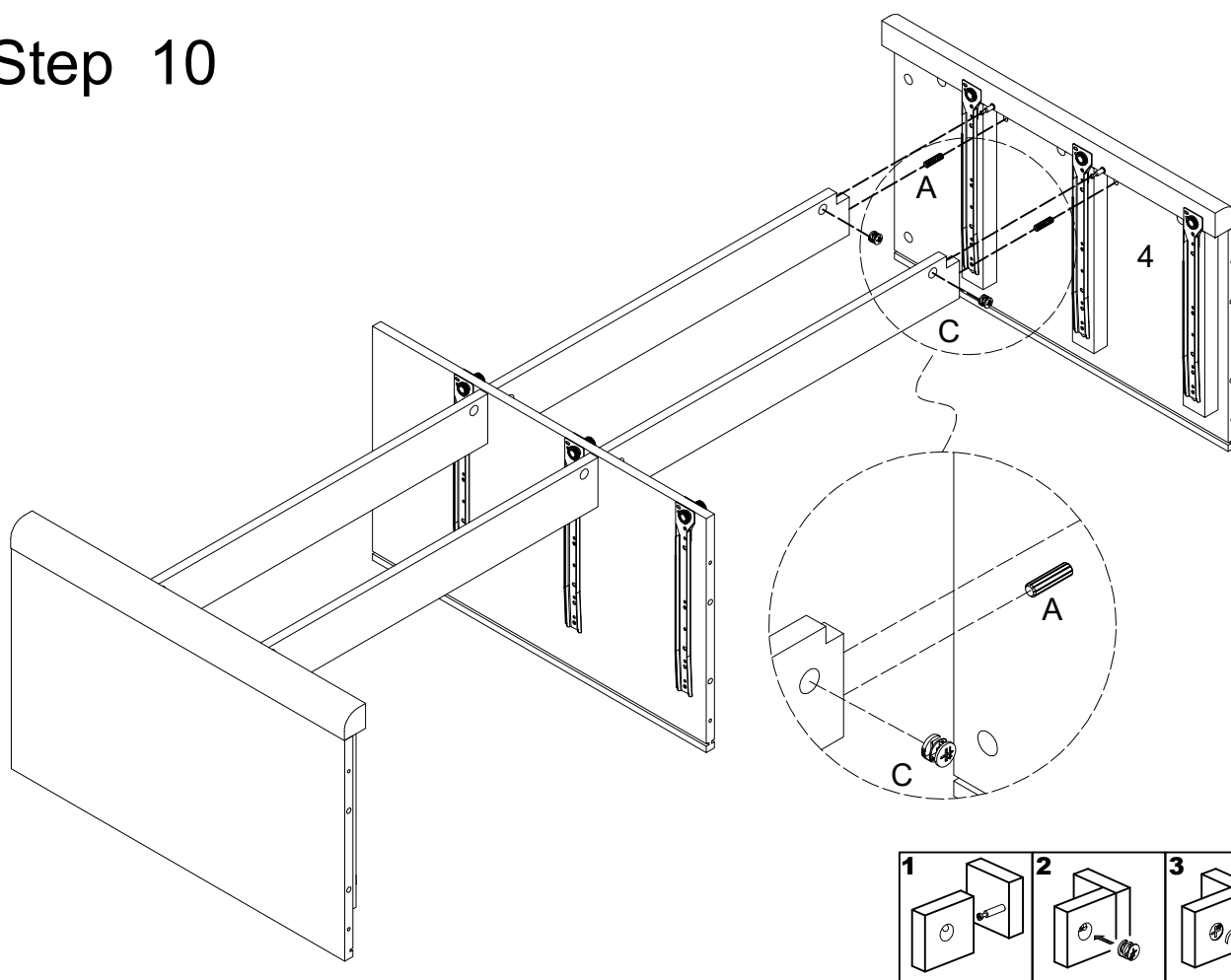
Step 8



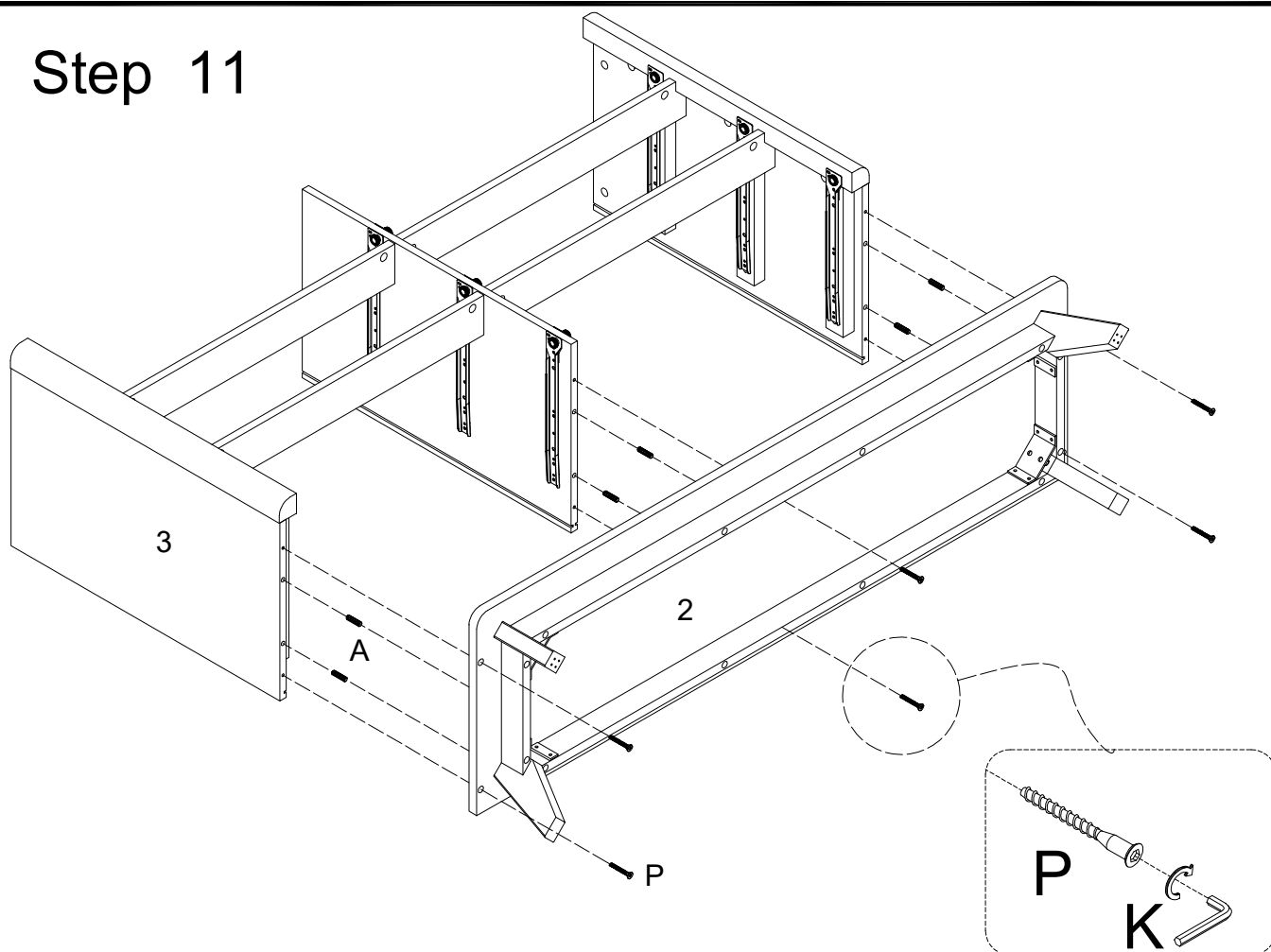
Step 9



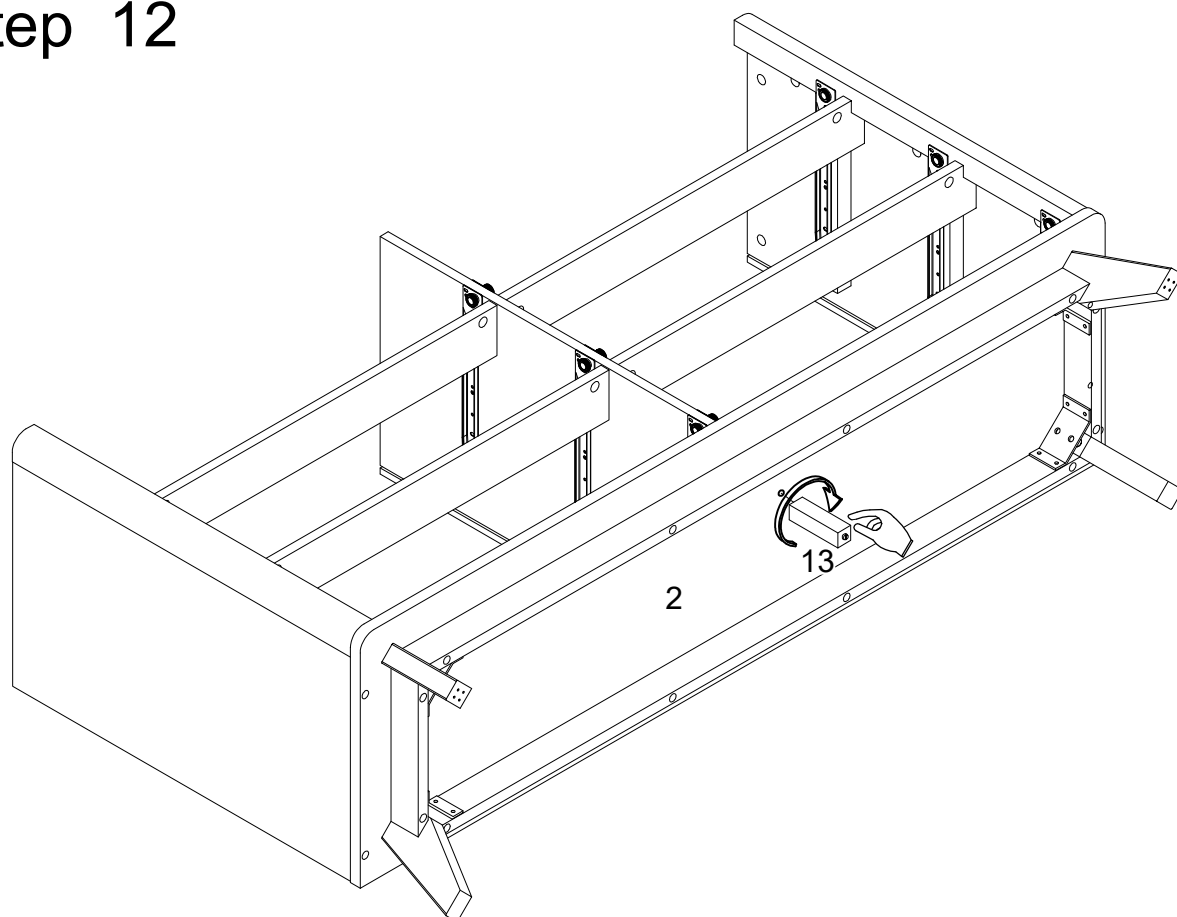
Step 10



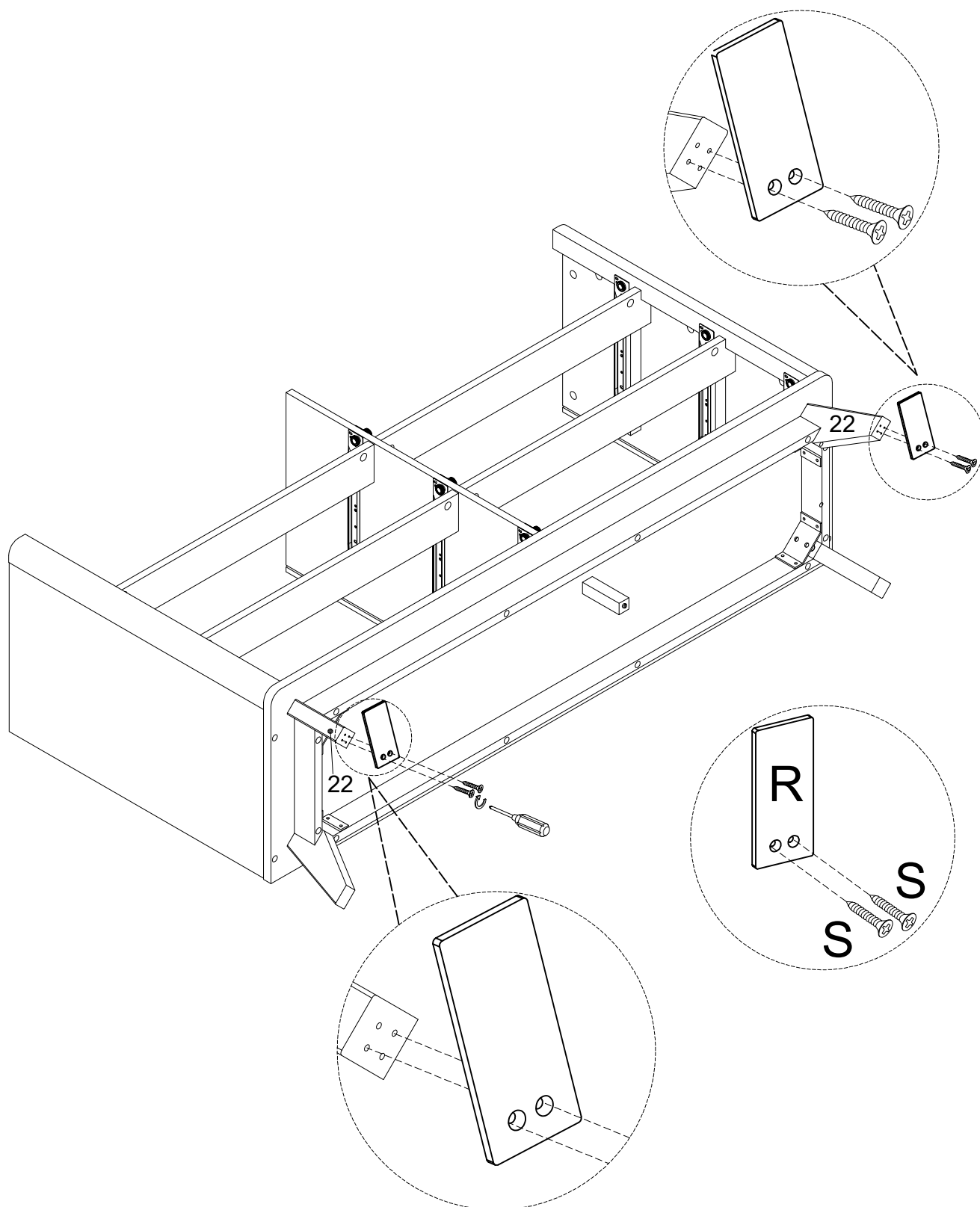
Step 11



Step 12

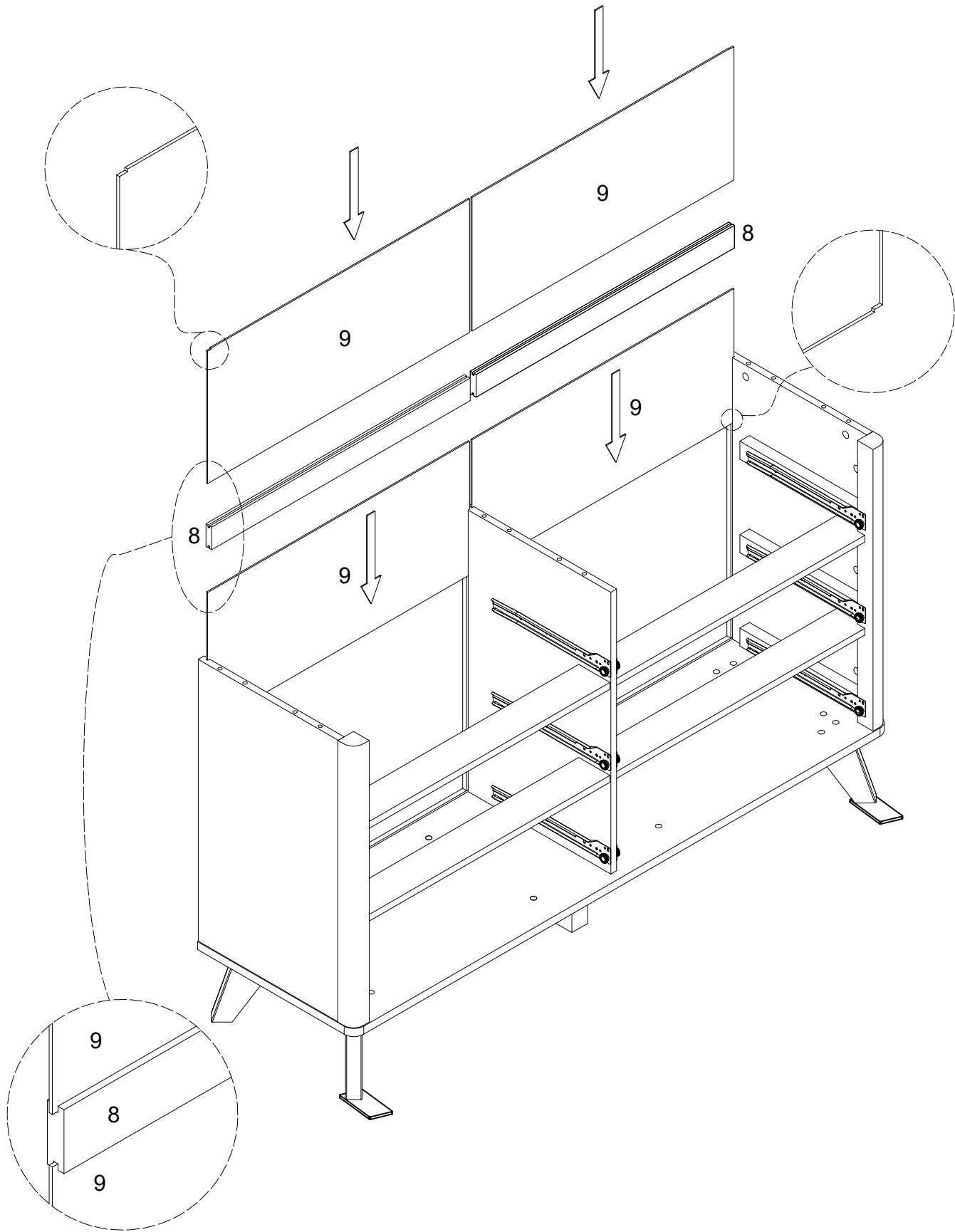


Step 13

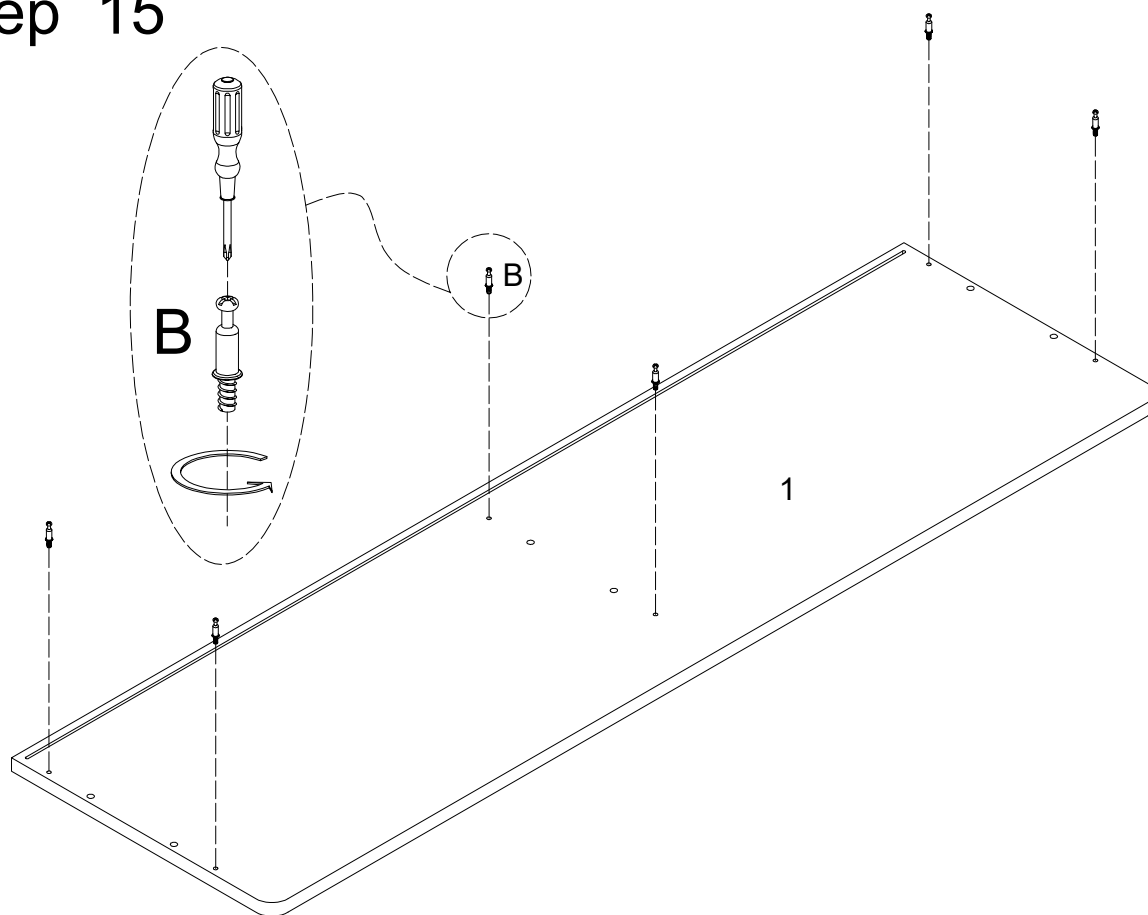


Note: It is necessary to assemble the metal plate at the bottom of front legs to keep this unit more stable .

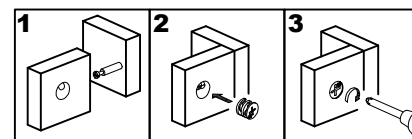
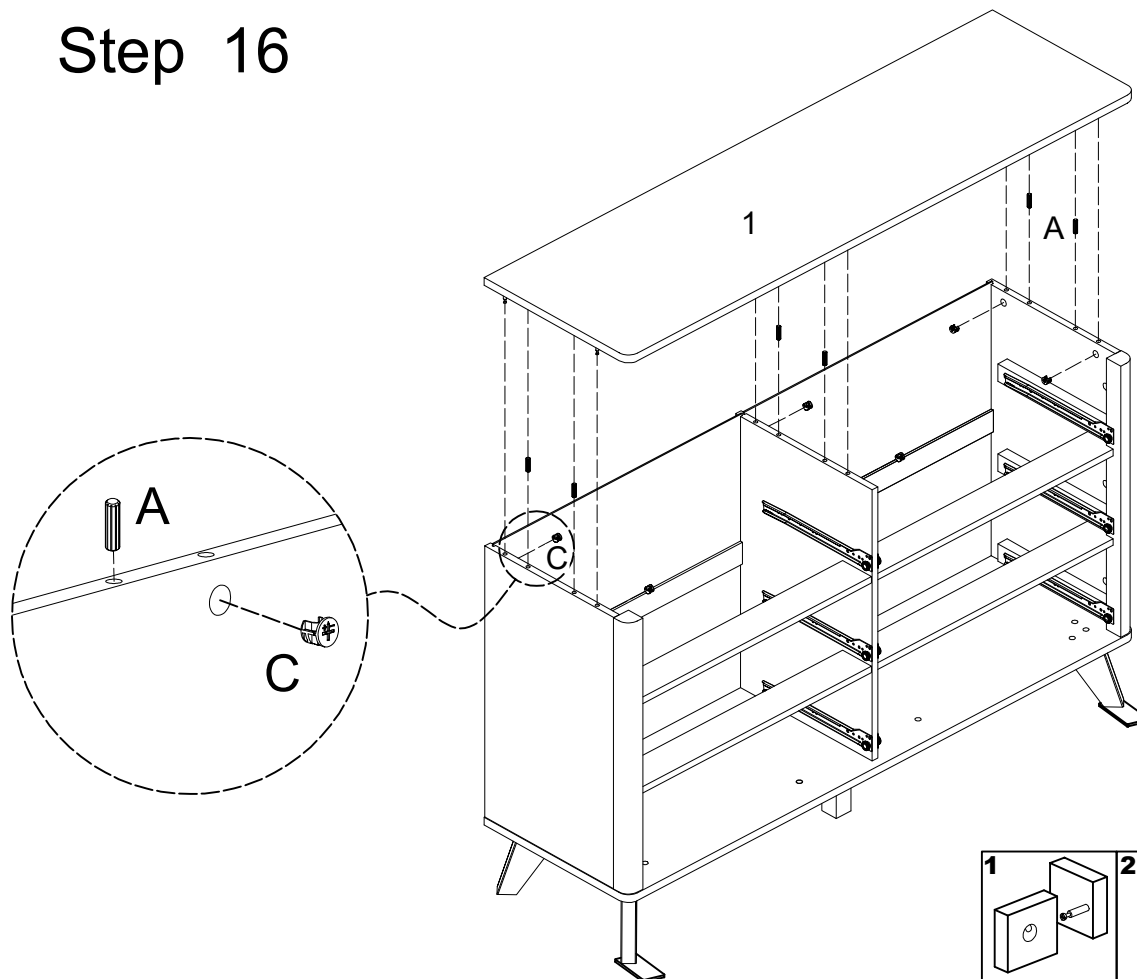
Step 14



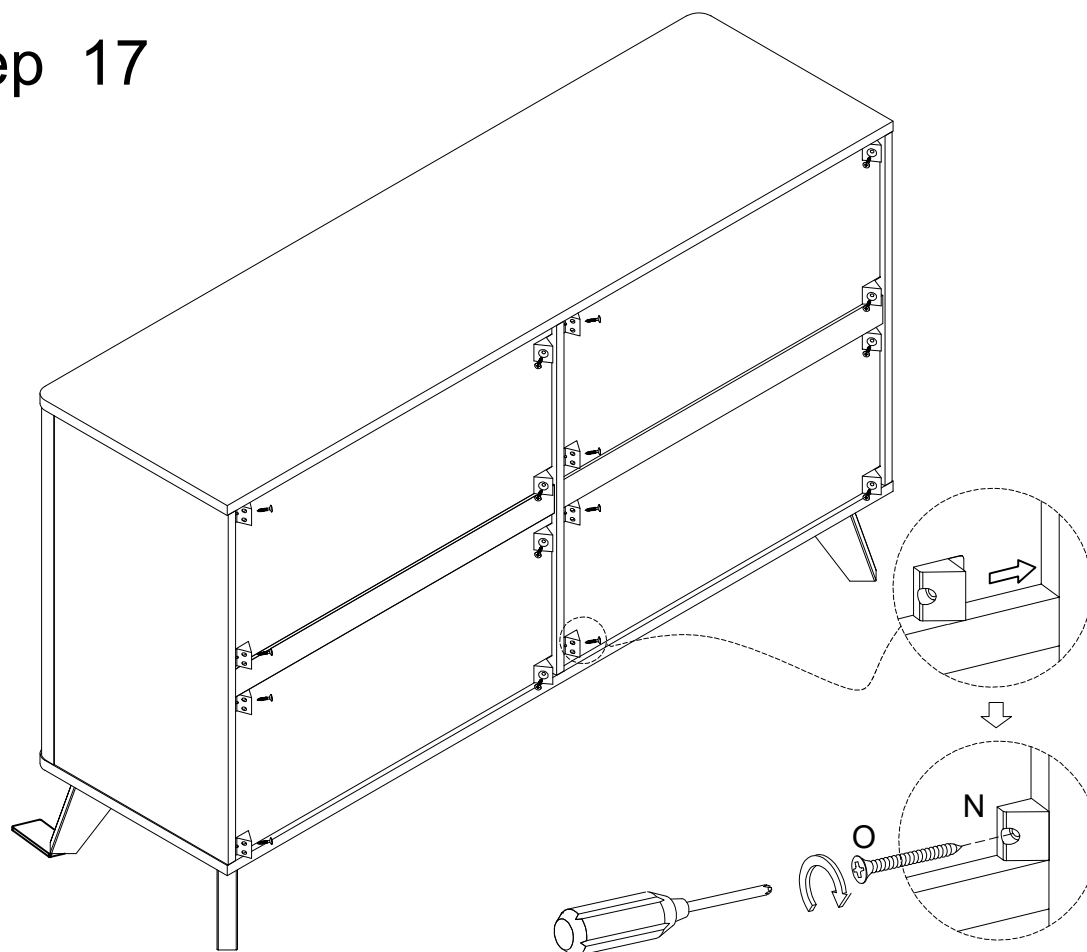
Step 15



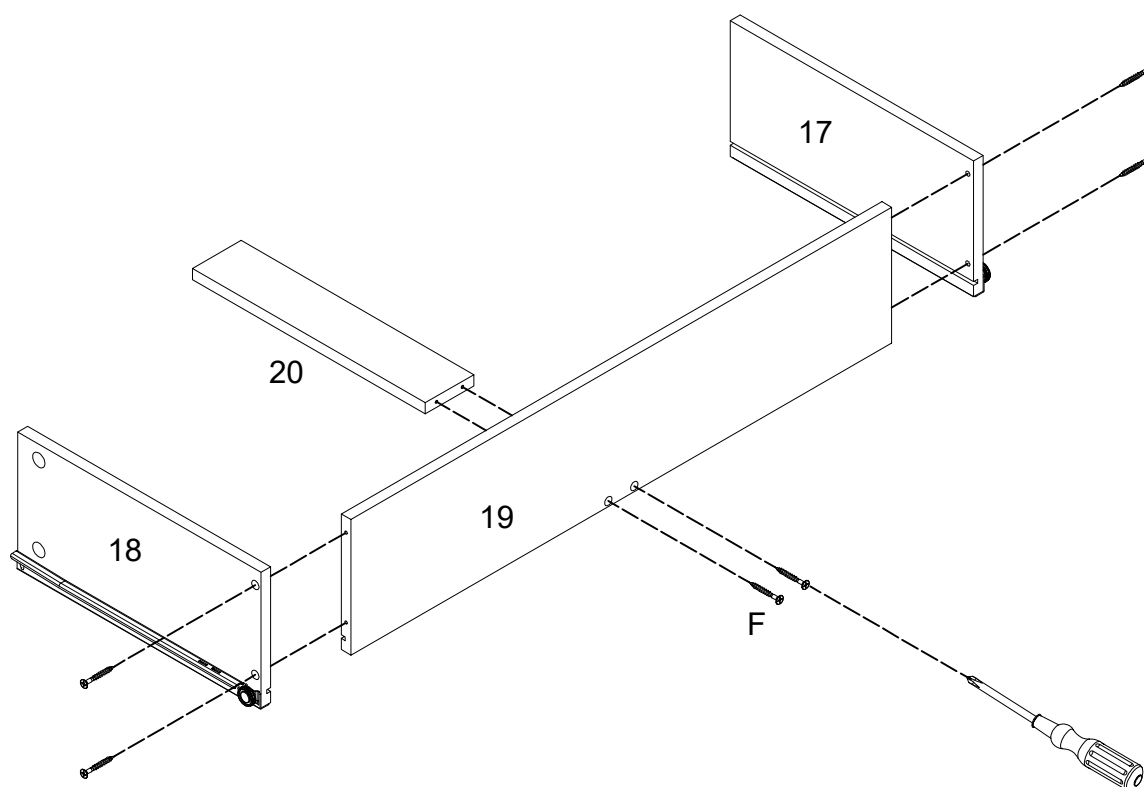
Step 16



Step 17

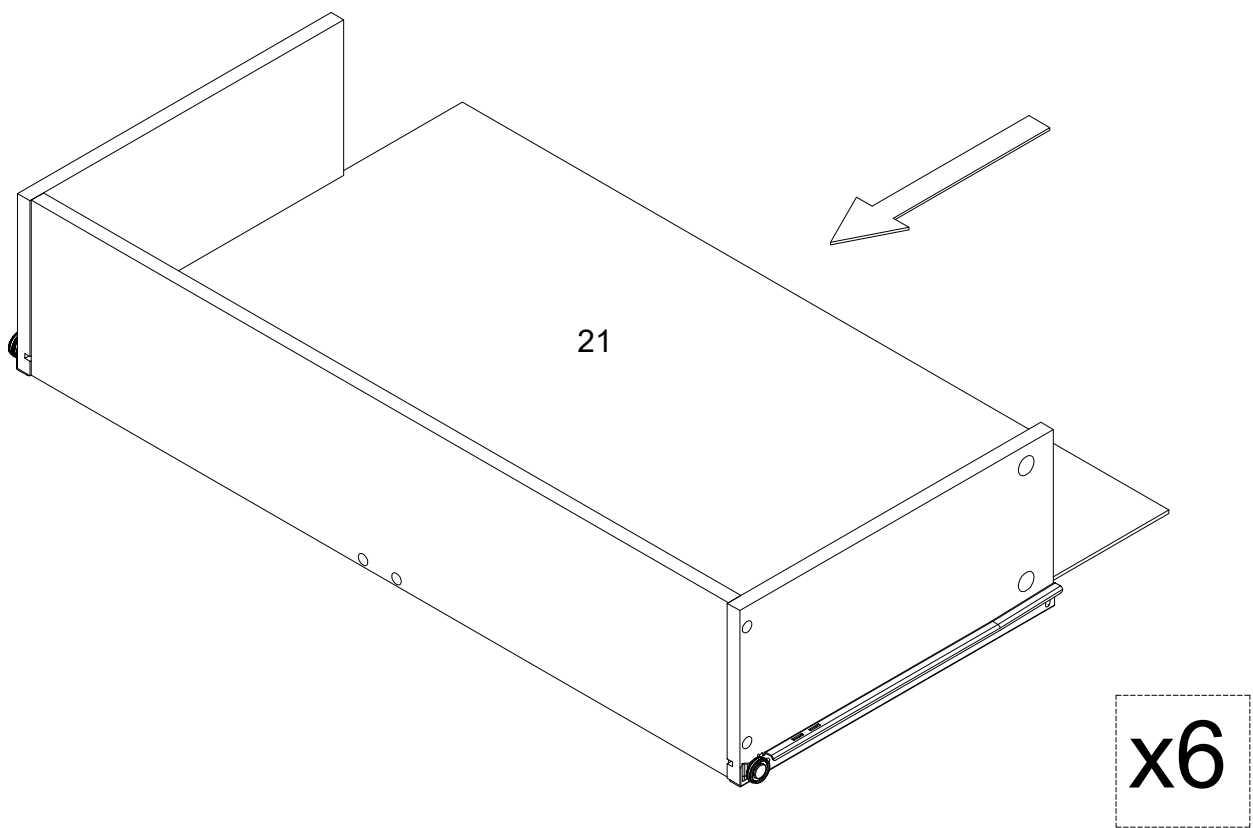


Step 18

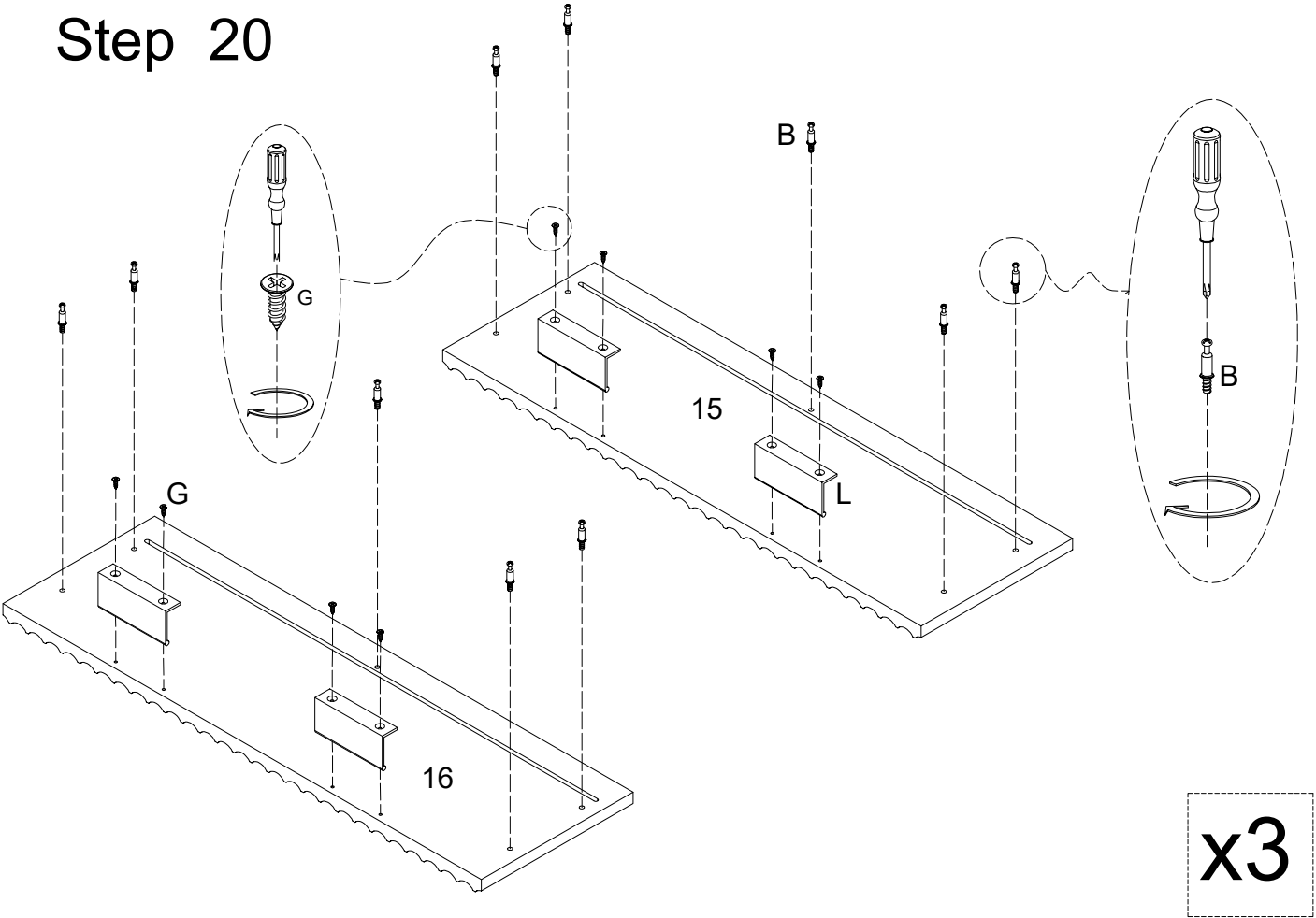


x6

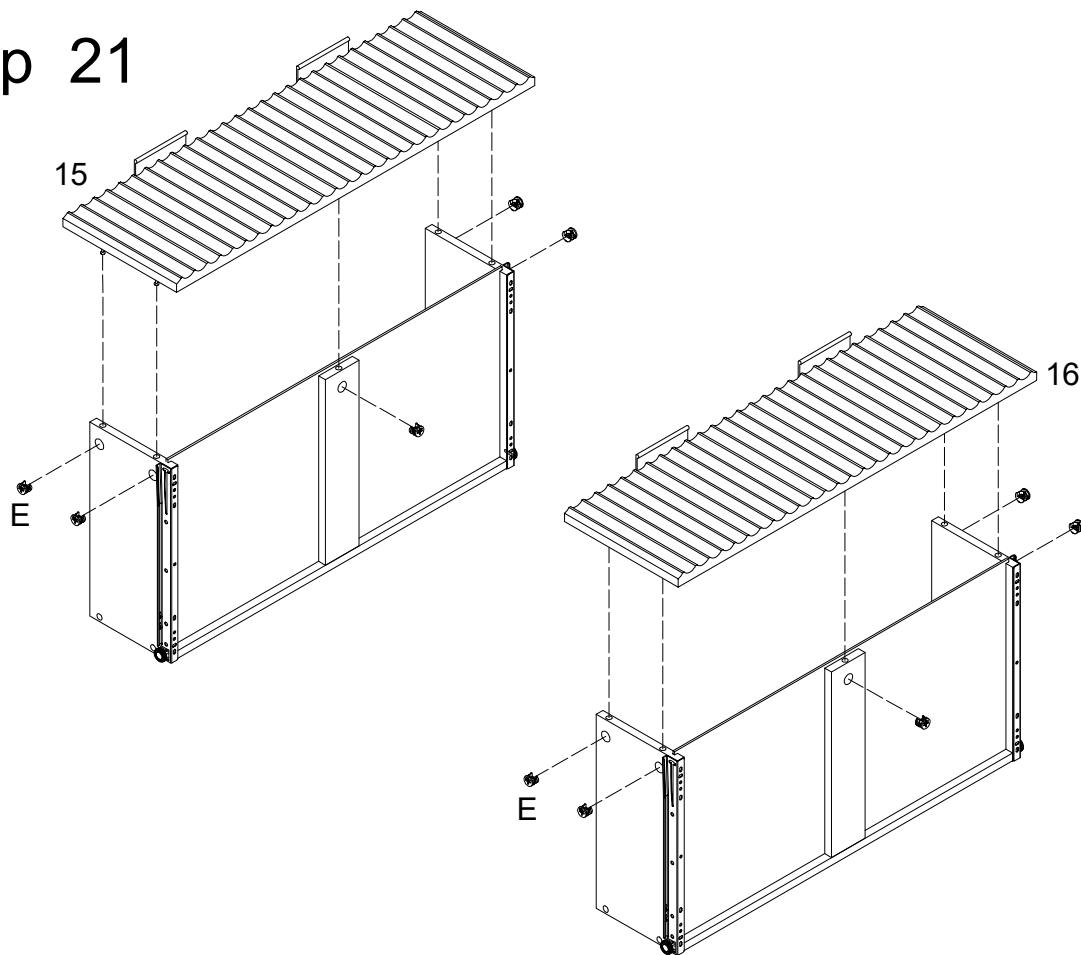
Step 19



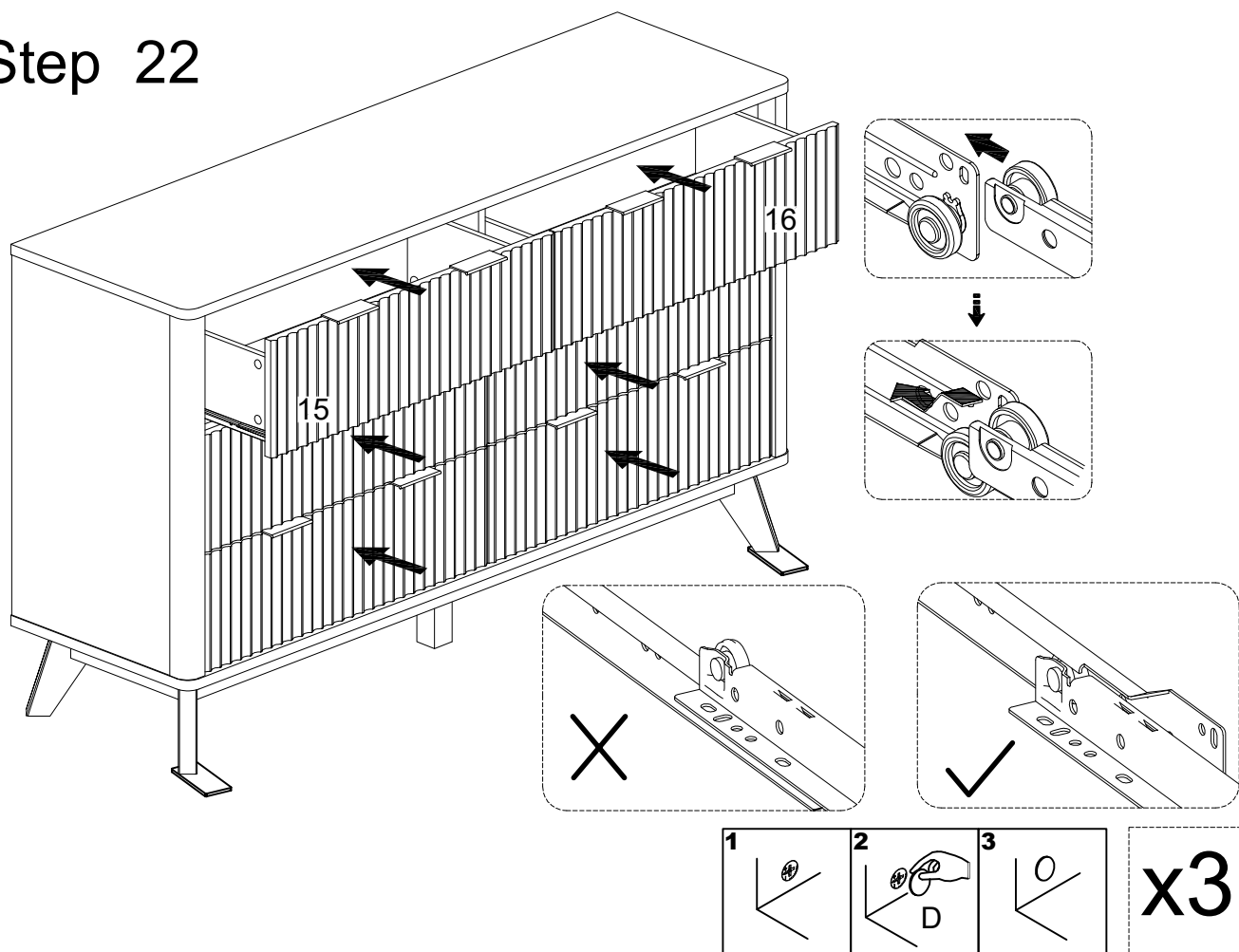
Step 20



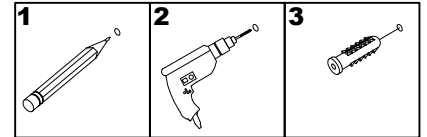
Step 21



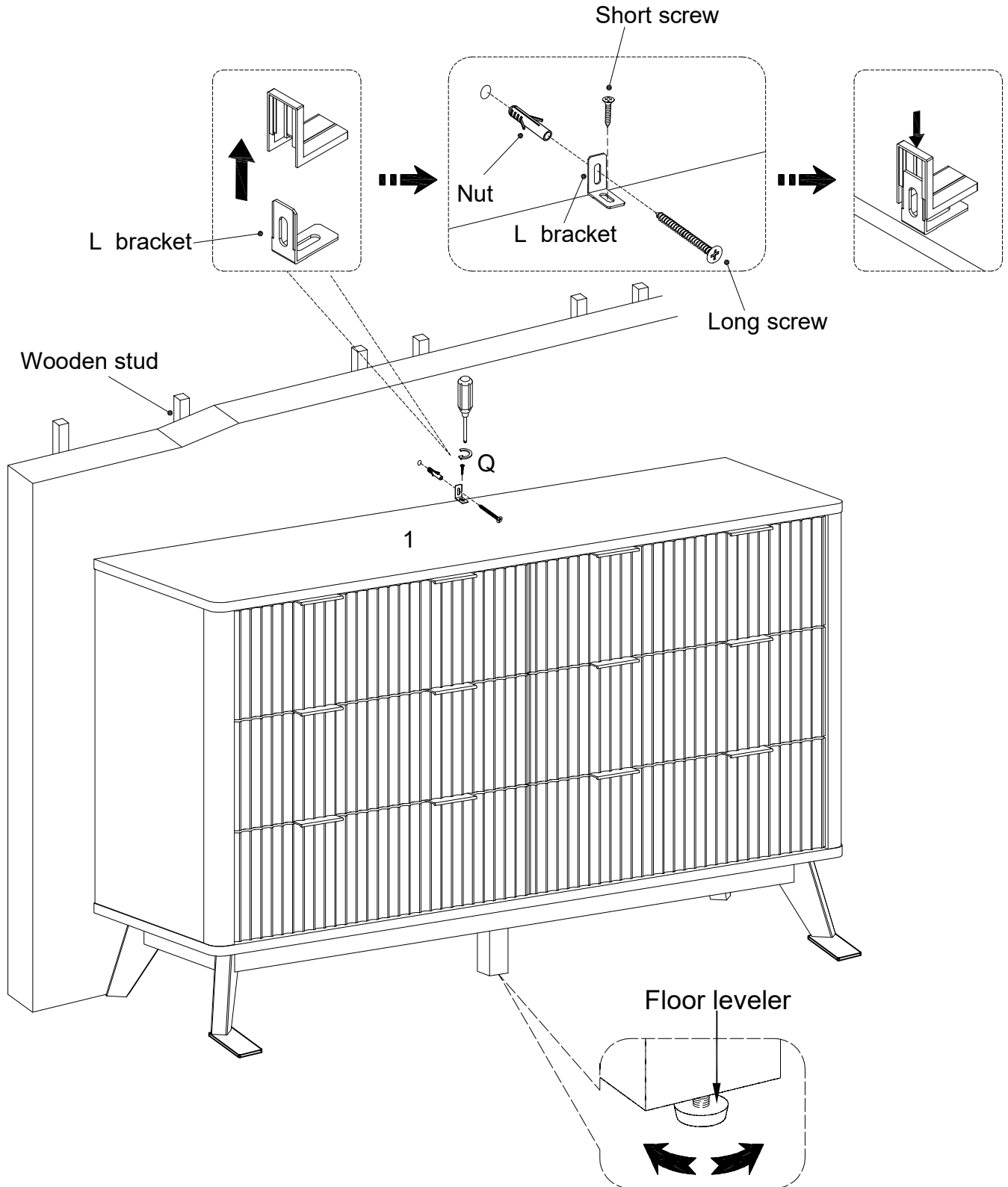
Step 22



Step 23

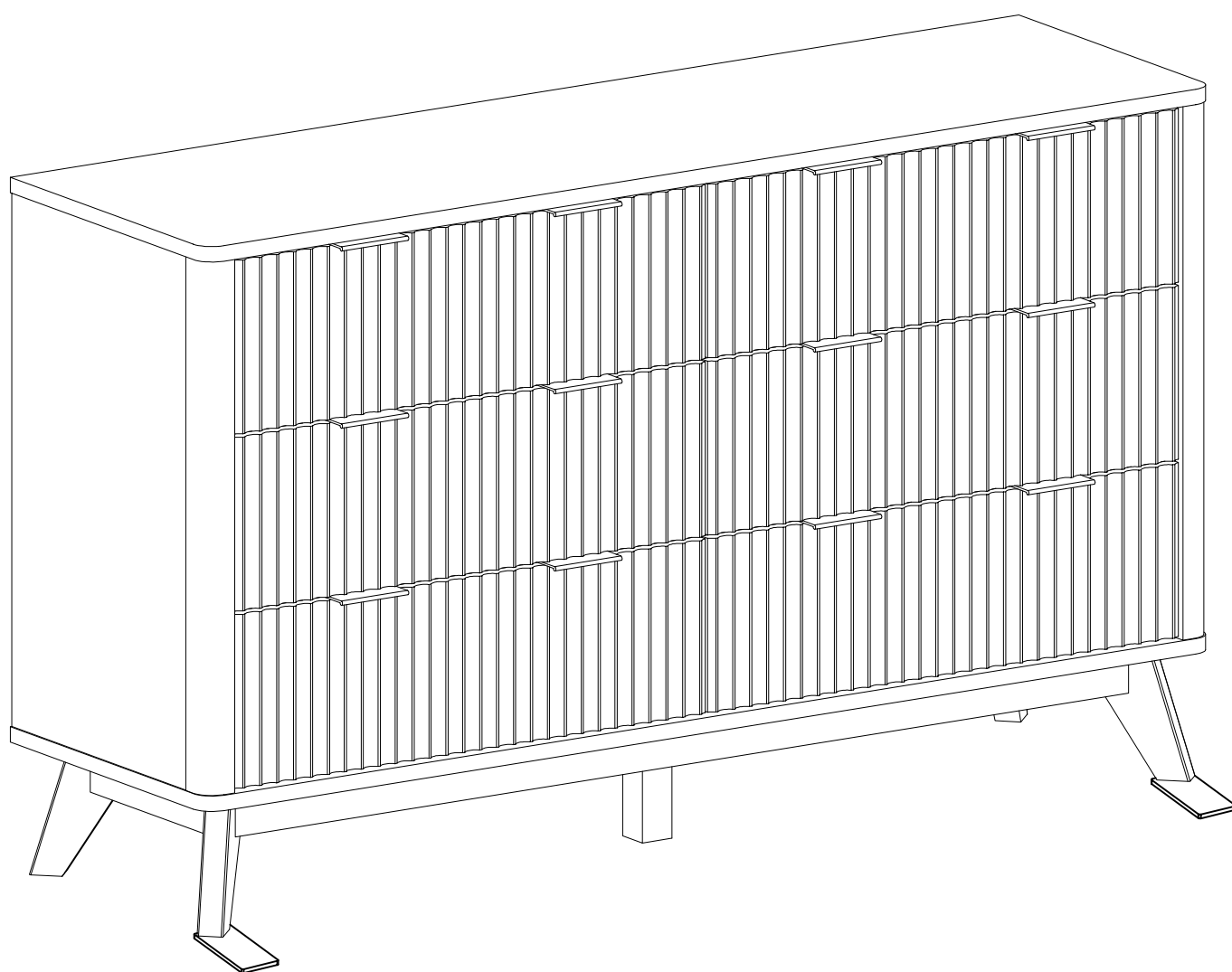


Serious or fatal injuries can occur from furniture tipping over. To prevent the furniture from tipping over we recommend that it is permanently fixed to the wall. Wall anchor and hardware are included with this product. Please make sure hardware is suitable for your walls before installing, as different wall materials may require different types of anchors.



If necessary adjust the floor leveler at the bottom of the Support Leg to improve the gap around the Drawer.

Step 24



Final Assembly