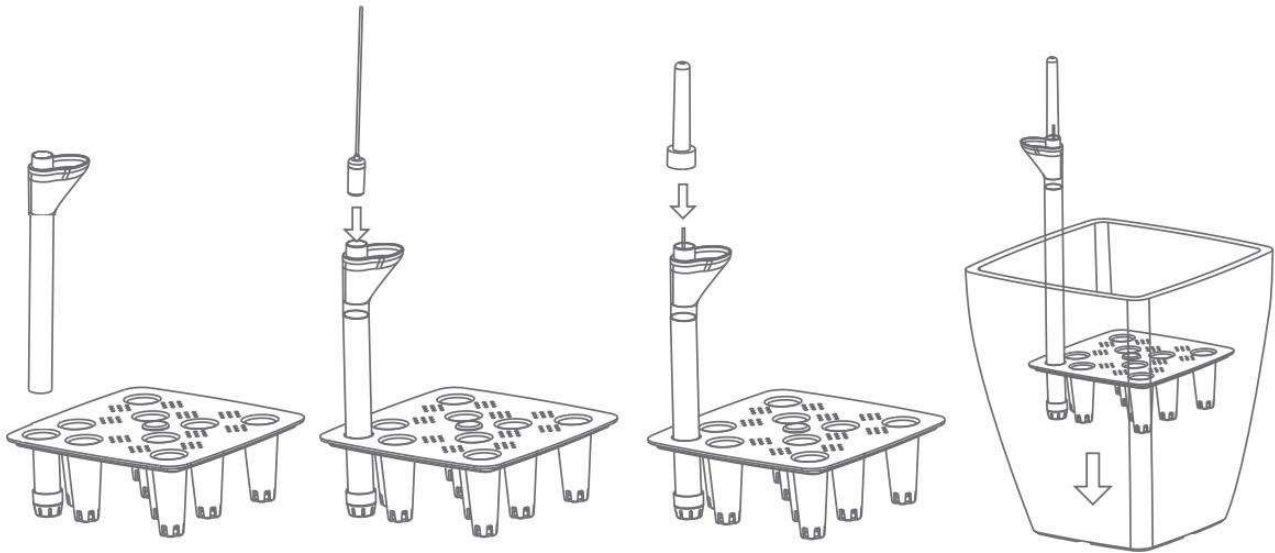


HOW TO ASSEMBLE



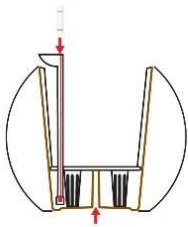
Step 1: Secure cylinder to support base

Step 2: Insert water level indicator into cylinder

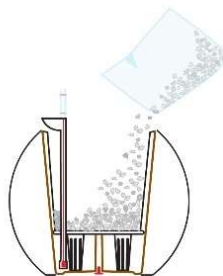
Step 3: Attach funnel covering to top of cylinder

Step 4: Put the system into the case

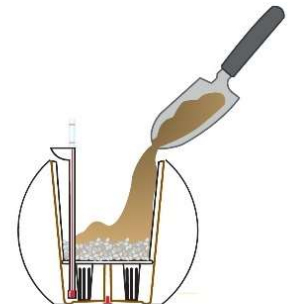
HOW TO PLANT THE RIGHT WAY



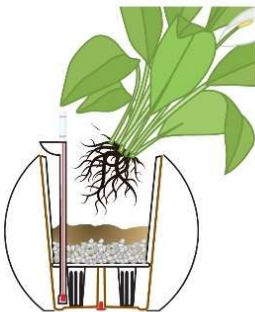
Step 1: Insert smart-watering system assembled as instructed into pot



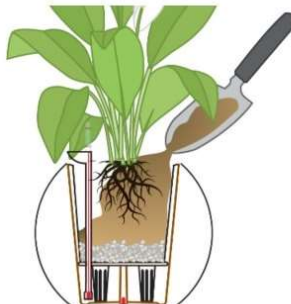
Step 2: Add a bottom layer of gravel or porous rock to prevent soil from falling into support base water reservoir



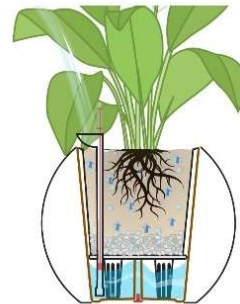
Step 3: Cover the layer of gravel with a thin layer of soil



Step 4: Insert plant



Step 5: Pour soil around plant until roots are covered and there is an adequate layer to support plant health



Step 6: Add water to smart-watering system and repeat this step 10 days later