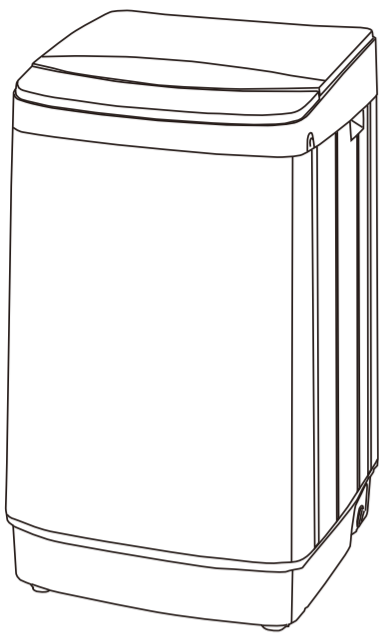


AUTOMATIC WASHING MACHINE

Model Number: NBYG-HA107B



INSTRUCTION MANUAL

BEFORE USE, PLEASE READ AND FOLLOW ALL SAFETY RULES AND OPERATING INSTRUCTIONS.

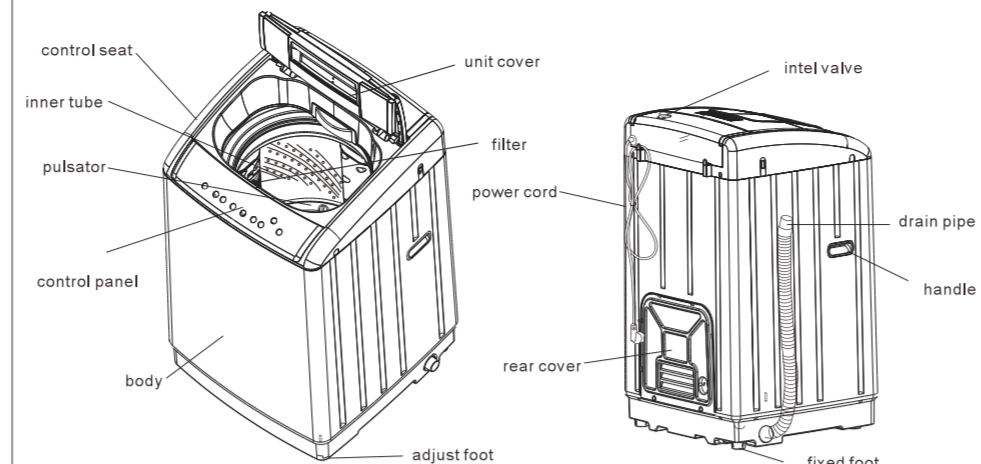
Nidekman has a policy of continuous improvement on its products and reserves the right to change materials and specifications without notice.

OPERATOR'S MANUAL

TABLE OF CONTENTS

NAME OF PARTS	01
SAFETY PRECAUTION	02
INSTALLATION & ADJUSTMENT	04
INSTALLATION OF INLET HOSE	06
PREPARATION	08
PUT IN WASHING LAUNDRY	09
PUT IN WASHING DETERGENT	10
USER GUIDE	11
AFTER WASHING	15
TROUBLE SHOOTING	16

NAME OF PARTS

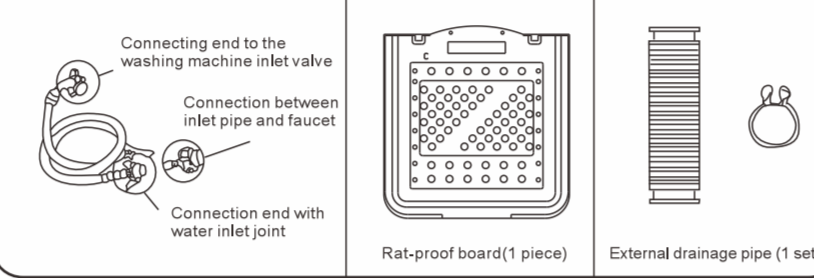


Note: All drawings in the manual are schematic diagrams. Due to product improvements, the products and accessories you get may be inconsistent with this manual, please understand.

Marks Introduction

- All with this symbol, you should have to operate strictly according to instruction. If not, it may cause damage to washing machine and even endanger the user's life.
- All with this symbol, there is something we are forbidden to do in any way. If not, it may cause damage to washing machine and even endanger the user's life.

Accessories



SAFETY PRECAUTION

- Please connect the plug to a 110V power outlet and make sure the ground wire is firmly connected. If possible, please use a waterproof protector.
- Please make sure you can easily unplug when using the machine. When the power is out or the machine is moved or cleaned, the plug must be unplugged and the water supply must be stopped. Do not repair or remove the plug with wet hands.
- If the power cord is damaged, it must be replaced by the manufacturer or maintenance department or similar professionals to avoid danger.
- For appliances connected to the water source by a removable hose assembly, a statement should be made that the new hose provided with the appliance is used and that the old hose assembly cannot be reused.
- Maximum water inlet pressure 0.85Mpa, minimum water inlet pressure 0.03Mpa.
- It cannot be installed in humid places such as bathrooms, and it must not be washed with water. Do not put wet clothes on the control panel.
- Do not use hot water above 50C. Note: Do not connect to hot water source.
- When the washing machine is installed on a carpeted floor, the carpet must not block the ventilation holes.
- Do not wash raincoats, bicycle covers and other waterproof clothing to avoid abnormal vibration during dehydration.
- Washing machine bottom vent: Do not share the same socket with other electrical appliances. If the power plug is damaged or the plug is loosely inserted into the socket, it cannot be used.

SAFETY PRECAUTION

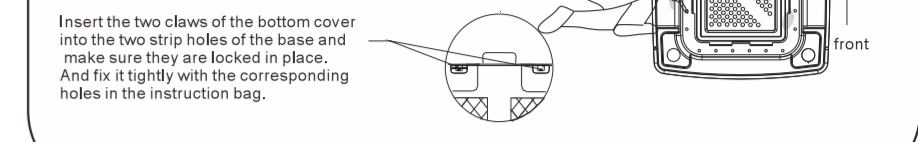
- Do not put your hands into the bathtub while the machine is working. Keep children away from machines.
- Do not disassemble, repair and repackage the machine by yourself.
- Do not place heavy or hot things on top of the machine.
- Do not wash laundry soaked in petrol or organic solvents.
- This machine must not be used by unsupervised children or disabled or infirm persons.
- Keep the machine away from heating equipment and avoid direct sunlight.
- Make sure the filter is in good condition and fixed well before wash. If the filter falls or is damaged, please contact our local after-sales service.
- Please remove all coins, buttons, sand, hairpins and other foreign objects from your pockets before washing, to protect your clothes and the washing machine from damage.
- Please make sure the inlet hose fixed correctly. Put down the drain hose and supply water before wash.
- We suggest to use few-foam detergent.

INSTALLATION & ADJUSTMENT

For users to use the machine safely and correctly, please install and adjust this machine according to this manual.

Fix the rat-proof board

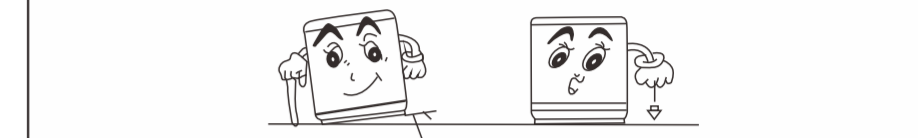
- Open and remove the carton box, take the rat-proof board out.
- Open top cover of the washing machine, take out the accessories from the tub.
- Remove other packages, including rising Plastic in the base foam.



Adjustment

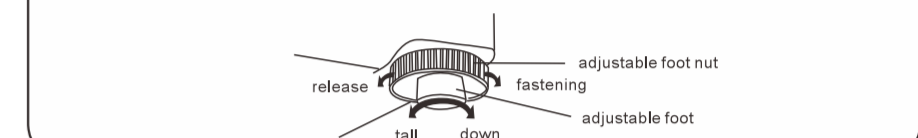
Keep the machine away from the wall more than 20mm. The maximum allowable inclination angle between the ground and the palm is 2°. Uneven or tilted ground may cause the machine to run unevenly or stop working. Please adjust the machine as follows:

- Level**
Hang a rope with tied hammer to confirm whether the machine is on the level line.



Adjustable feet

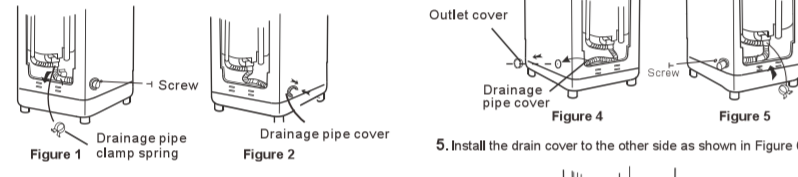
- Adjust the adjustable feet by slightly up, rotate the feet until they reach the level line.
- After adjusting the level, tighten the adjustable foot nut.



INSTALLATION & ADJUSTMENT

How to change the direction of a drain hose

- Unscrew the screws of the back cover by screwdriver, and remove the back cover.
- Remove the screws of the pipe rack and take off the drainage pipe rack. As shown in Figure 1, bring the drain pipe rack closer to the top, then put one hand into the base and pull the drain pipe rack to disengage it. Hold it in place, and use your other hand to pull the rear pipe down and out of the drain pipe, as shown in Figure 2.
- Extend the drain pipe from the other side, fix the drain pipe to the box with a drain pipe clamp, screw in the screws, then put the drain pipe into the hole on the other end of the rear drain pipe, and then push the rear drain pipe into the drain valve body. Snap on the only, as shown in Figure 5.
- Install the drain cover to the other side as shown in Figure 6.



Note: To ensure correct installation, it is recommended that the drainage pipe be installed as illustrated. If the drain pipe is shifted toward the rear of the outer barrel, adjust the fixed position after drain pipe to ensure that the outer barrel is not pulled by the drain pipe.

Usage of drain hose

Install drain pipe

- Connect the drain hose to the drain outlet of the machine.
- Push the drain hose into the body, and then fix it with a cord.

Keep the drain hose drain smoothly.

- The height of the drain hose should be less than 10cm. Otherwise, it will cause draining not smooth, even the machine will stop working if it take long time to drain water.
- Do not step on or press the drain hose.

- If the drain hose is too long, it can be cut a shorter. To make the water flow better, please cut the water hose obliquely.

Installation of inlet hose

Inlet hose connected to the machine

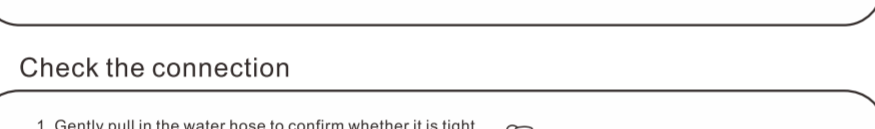
- Do not remove the sealing ring. Please check whether the sealing ring is detached or damaged before each use of the washing machine.
- Put the water inlet hose nut onto the water inlet valve joint.
- Tighten the water inlet pipe nut and shake the water inlet pipe slightly to confirm whether it is properly tightened.

Note: The water inlet pipe cannot be connected to the hot water source hose.



Adapter connected to the inlet hose

- Press down the slider and insert the water inlet hose into the water inlet hose joint.
- Hang the locking rod on the water inlet hose joint, put down the slider, and wait until you hear a "pump" sound.



Note: Please use the new water inlet hose assembly that comes with the washing machine. The old water inlet hose assembly cannot be reused.

Check the connection

- Gently pull in the water hose to confirm whether it is tight.
- After installation, open the faucet and confirm whether there is water leakage.
- The water inlet hose cannot be bent with force.
- Please check the connections and keep it fixed well every time before using to prevent it from falling off due to improper installation.

Undo the inlet hose

- Close the faucet.
- Press down slider to take the hose down. If you use the washing machine more than 1 time per week, there is no need to uninstall the water inlet hose.



Installation of inlet hose

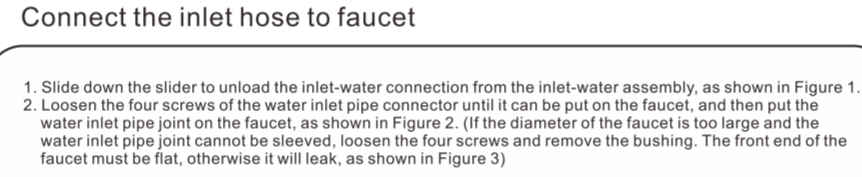
Confirm faucet



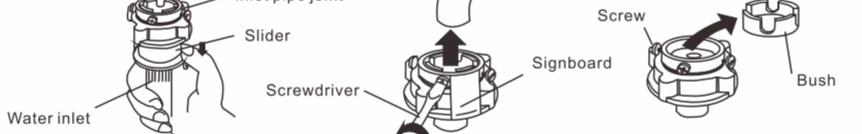
The front end length is required to be greater than 10mm. The outlet end of the faucet should be flat. If it is not flat, please use a knife to flatten it to avoid water leakage.

Connect the inlet hose to faucet

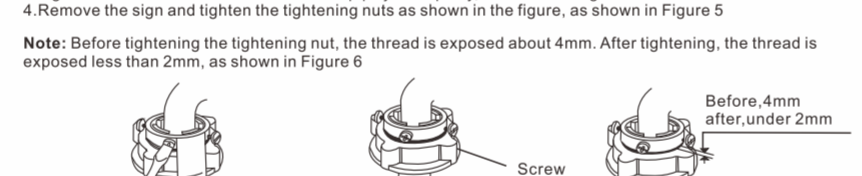
- Slide down the slider to unload the inlet water connection from the inlet-water assembly, as shown in Figure 1.
- Loosen the four screws of the water inlet pipe connector until it can be put on the faucet, and then put the water inlet pipe joint on the faucet, as shown in Figure 2. (If the diameter of the faucet is too large and the water inlet pipe joint cannot be sleeved, loosen the four screws and remove the bushing. The front end of the faucet must be flat, otherwise it will leak, as shown in Figure 3)



- Tighten the four screws on the water inlet pipe joint equally, as shown in Figure 4.
- Remove the sign and tighten the tightening nuts as shown in the figure, as shown in Figure 5.



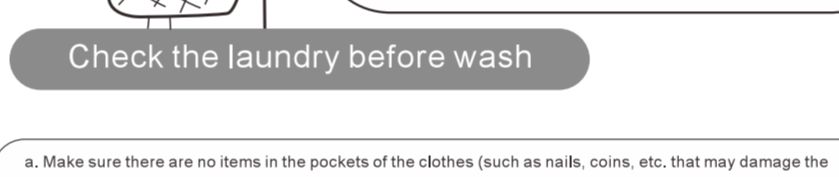
Note: Before tightening the tightening nut, the thread is exposed about 4mm. After tightening, the thread is exposed less than 2mm, as shown in Figure 6.



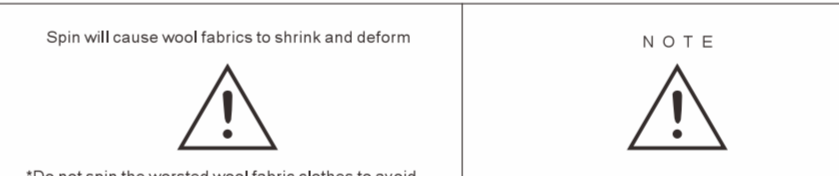
PREPARATION

Check the laundry before wash

- Make sure there are no items in the pockets of the clothes (such as nails, coins, etc.) that may damage the clothes of the washing machine, produce extra noise or cause the washing machine to malfunction.
- Wash the clothes so that the lint produced during the washing process will not adhere to the surface of the clothes.
- When finally washing silk fabrics, such as women's underwear, lace items, nylon and thin chemical fiber items, they should be placed in a washing net.
- Tighten the loose straps and zipper.
- Remove mud and sand from clothes before washing. We recommend brushing dirty coats before washing them.
- Please put clothes that are easy to wash above the water line at the bottom of the water. Also, when it comes up, pause and press it into the washing liquid.
- Please wash thick clothes and thin clothes separately.
- It is not suitable to wash down jackets and other clothes that are not easy to absorb water. If you want to wash, please use medium to low water level and wash in one piece.
- It is strictly prohibited to wash pure blankets and electric blankets.



- Spin will cause wool fabrics to shrink and deform.
- Do not spin the worsted wool fabric clothes to avoid clothes shrinkage and deformation.
- Do not wash carpet and electric blanket!



PUT IN WASHING LAUNDRY

Weight of laundry for reference

- Working clothes cotton: 20%
- Jeans cotton: 15%
- Overcoat cotton: 15%
- Towel/coverlet cotton: 10%
- Pyjamas cotton: 3%
- Shirt cotton: 5%
- T-shirt cotton: 2%
- Underpants cotton: 1%
- Single bed sheet cotton: 11%
- Socks cotton: 1%
- Jacket cotton: 15%



The capacity is the allowed maximum standard weight of dry laundry in one operation.

Laundry thickness, size, type, etc. will affect the actual washing capacity. It is better to put the appropriate clothes into the washing machine.

Do not choose a high water level for fabrics weighing less than 1.0kg to prevent water droplets from splashing.

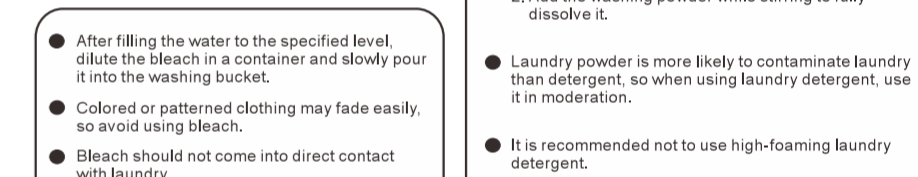
When there are a lot of clothes, please choose a high water level to prevent the clothes from wearing out.



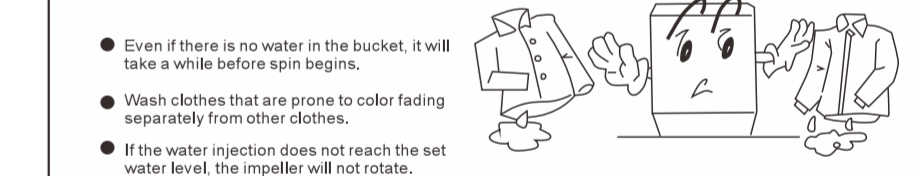
PUT IN WASHING DETERGENT

How to use laundry detergent

- Dissolve directly in the washing machine.
- Fill water to low water level.
- Put in the washing powder and run it for about 30 seconds to fully dissolve it.
- Put in the laundry and select the appropriate water level.



- Instant method of washing powder.
- Laundry powder is more likely to contaminate laundry than detergent, so when using washing powder, use it in moderation.
- It is recommended not to use high-foaming laundry detergent.
- There are some differences in the dosage of different washing powders. For specific dosage, you need to refer to the instructions for use of the washing powder.



USER GUIDE

First Wash

Before washing for the first time, you need to complete a full wash cycle without loading any clothes. Steps:

- Press the power switch.
- Pour a small amount of washing powder into the washing bucket.
- Open the water supply faucet of the washing machine.
- Press the start/pause button.

This will drain out any water that was left in the washing machine during the manufacturer's testing process.

How to put in detergent

Please put the appropriate amount of washing powder according to the water level. Even if you use more washing powder than normal, there will not be much difference in the washing effect. Incomplete rinsing will cause damage to the fabric of the clothes.

Detergent usage

Water level	Washing powder	Laundry detergent
7-8	32g	22g
5-6	28g	20g
3-4	24g	18g
1-2	22g	15g

Among synthetic laundry detergents, those with less foam are the best, and laundry detergents with less foam are suitable for washing machines.

The foam of the washing powder overflows to the flip cover, which has no impact on the performance and safety of the washing machine.

Check and preparation before laundry

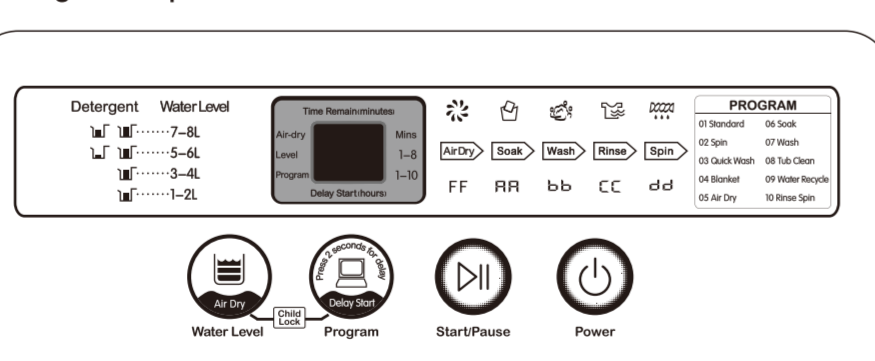
For details, please refer to page 8 of the instruction manual "Preparation before washing"

Washing steps instructions

- Turn on the faucet.
 - Open the washing machine cover.
 - Put the clothes loosely into the washing bucket one by one, do not overload.
 - Open the washing powder dissolving box and add an appropriate amount of washing powder.
 - Close the washing machine lid.
 - Press the power switch.
 - Press each function button to select the washing program that suits your needs.
 - Press the start/pause button and the washing machine starts running.
- After the washing process:
- Turn off the faucet.
 - Unplug the washing machine.
 - Open the washing machine cover.
 - Take out the clothes.

USER GUIDE

Program Operation



Default Program--For washing of different clothes

- Press the power button.
 - Press the program/appointment button. Select the program according to the laundry.
 - Press the water level button. Select the appropriate water level according to the fabric quality and amount of clothing. The default water level at startup is level 6. Press the water level button to cycle through the selection.
 - Press the start/pause button. After starting, press the set program to enter the washing program and enter the washing process. The process and remaining time are displayed alternately in the display window. If you want to pause, please press Start/Pause again. During the pause period, the washing program and water level can be changed.
 - Close the cover. When the laundry is finished, a buzzer will sound and the power will turn off automatically. During operation, press the water level key and program key at the same time to activate the child lock function, all buttons will be locked, and the ET alarm will sound when the door cover is opened. It will close within 5s. When the upper cover is released and the water level key and program key are pressed for more than 5s, the water will drain automatically. After the water level key and the program key are pressed at the same time, the chapter lock function is released and the chapter lock setting is activated. The digital tube displays CL.
- 6L-7L-8L-1L-2L-3L-4L-5L

- During operation, if you want to operate buttons other than "Power" and "Pause/Start", generally press the "Pause/Start" button first, and then press other buttons; if the operation fails, please press the "Power" button, and then turn on the power again and restart. Perform the required work.
- If you don't press any keys after turning on the power, it will automatically shut down after 10 minutes. After the washing machine is finished washing, please turn off the faucet and unplug the power plug.

USER GUIDE

Delay Washing (applicable to scheduled washing)

- Press the power button.
 - Press the program/appointment button. Select the program according to the laundry.
 - Press the program/delay button. Press the program/delay button for 2 seconds to enter the schedule setting mode, and window 2 will be displayed. Press the program/delay button again and the time will increase by 1 hour. 2-3-4-5-6-7-. . .20-21-22-23-24-Without delay.
 - Press the water level button. Select the appropriate water level according to the fabric quality and amount of clothing. The default water level at startup is level 6. Press the water level button to cycle through the selection.
 - Close the cover. The cover must be closed before the delay is started, otherwise the fault message E3 will appear after the delay is started.
 - Press the start/pause button. After pressing the start/pause button, it enters the reservation state state. The digital window displays the reservation time and the washing is completed at the reservation time.
- 6L-7L-8L-1L-2L-3L-4L-5L

- During operation, if you want to operate buttons other than "Power" and "Pause/Start", generally press the "Pause/Start" button first, and then press other buttons; if the operation fails, please press the "Power" button, and then turn on the power again and restart. Perform the required work.
- If you don't press any keys after turning on the power, it will automatically shut down after 10 minutes. After the washing machine is finished washing, please turn off the faucet and unplug the power plug.

USER GUIDE

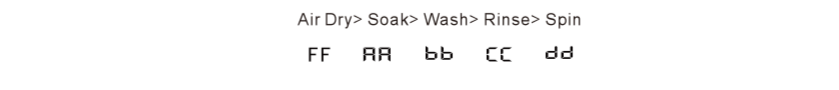
COMMON FAULT DESCRIPTION

Display	Possible Causes	Resolution
E2: Drainage Fault	• Drain blocked, damaged or faulty • Drain pipe is damaged	• Open and close the cover for 10 seconds to restart operation • Reposition the drain pipe for a more smooth water flow • Remove the blockage from the drain valve
E3-Top Cover Fault	• Top Lid has been opened during spin	• Close the cover
E4: Spin Fault	• Clothes are not bled or balanced • The machine is standing at an incline	• Reposition the clothes in the tub so they are balanced and level and close the cover • Place the washing machine on a level surface, once done
E1-Water Inlet Fault	• The faucet is not turned • Water level is too low • Water inlet valve blocked • Water pressure is too low	• Check the faucet, open and close the lid once • Clean the water inlet valve, open and close the machine cover once • Turn around machine and wait until the water pressure is normal before washing
E5-Water Level Fault	• Water level sensor fault • Membrane controller failure • Airway tube is loose	• During the machine, wait 10 seconds and relock the machine, please continue set water level normal and restart the machine • If the problem persists, please contact after-sales customer service
E7- Child Protection	• Machine is Child-locked but the cover has been opened	• Close the door within 5s • After more than 10 seconds, press the water level and program buttons for 5 seconds to release the child lock function

Note: If the problem is still not solved after the above processing, please contact after-sales customer service. Users are not allowed to disassemble without authorization.

DIGITAL TUBE CONTENT DESCRIPTION

During the operation of the machine, the digital tube displays the remaining time and the current running status. The status display corresponds to the following instructions. When the child lock is set, the digital tube displays "CL" and the remaining time. When an alarm is set, the digital tube displays the remaining hours plus a small dot in the lower right corner.



- 01 Standard--the most commonly used fully automatic program.
- 02 Spin--separate dehydration program.
- 03 Quick Wash--a fully automatic program for quick wash.
- 04 Blanket--a fully automatic program for washing large items of blankets.
- 05 Air Dry--a program to speed up the drying of washed clothes.
- 06 Soak--a fully automatic process for heavy dirt.
- 07 Wash--a light washing program.
- 08 Tub Clean--a procedure for washing and disinfecting the inner tub of a washing machine.
- 09 Water Recycle--Water is left in the tub for the last time and can be used for other purposes.
- 10 Rinse Spin--a process of rinsing and dehydrating clothes with light.

AFTER WASHING

- After using it for a period of time, please promptly remove the lint debris attached to the lint filter, etc., otherwise it will affect your ability to use the machine better.
- When cleaning, please unplug the power plug from the socket first to clean the lint filter.

Cleaning of filter

- Press down on the filter frame buckle and pull forward to take out the filter frame.
- Remove the filter as shown in the picture.
- Turn the strainer over to remove the dirt.
- Clean the filter.
- Fit the filter back to its original shape and snap it into the grid (pay attention to the direction of the filter, the wrong direction will cause the side panel to fail to be installed).

The filter of the water inlet valve is easily blocked by debris and blocks water inflow. It should be cleaned with a brush about once every two months.

When the body is contaminated, wipe it with a damp soft cloth.

- Do not rinse directly with water.
- Wipe with neutral detergent.
- Do not use thinner, gasoline, or alcohol to wipe.



Wash the powder box after disassembling it

- Disassembly method: Gently tilt and pull up. Installation method: Install from above at an angle.
 - And push it in.
- After washing, turn off the water faucet. (The water inlet pipe can be removed if necessary).
 - Do not store water in the washing machine barrel. Drain the water immediately after each use.
 - The power plug must be unplugged before maintenance.
 - Hang up the power cord and drain pipe.
 - Use a clean soft cloth to wipe the water on the surface of the washing machine and the inside of the barrel. Open the upper cover for a period of time (about 1 hour), then close the upper cover.

TROUBLE SHOOTING

Phenomenon Reason

- When spin begins, spin intermittently.
 - Adjust the balance to prevent clothes from being placed sideways.
- When "Spin" is selected, the washing machine does not start immediately.
 - After the washing machine is set to "Spin", it must take a while to start dehydration.
- When the washing machine is used for the first time, a small amount of water may flow out of the drain pipe.
 - This is the remaining water during the factory performance inspection, which is a normal phenomenon.
- Stop spin at the end of spin, the display will change to rinse and water will display.
 - Because the laundry is deflected to one side, the safety switch is activated. Add water, air evenly, eliminate the eccentricity of the laundry, and spin again.

Packing Instructions

Name	Quantity	Storage location
Instruction manual	1	Accessory bag
Water inlet hose part	1	Accessory bag
Rat-proof board	1	Accessory bag
Washing machine	1	
Drain hose(circle)	1	
User Guide	1	Accessory bag
Remark		

