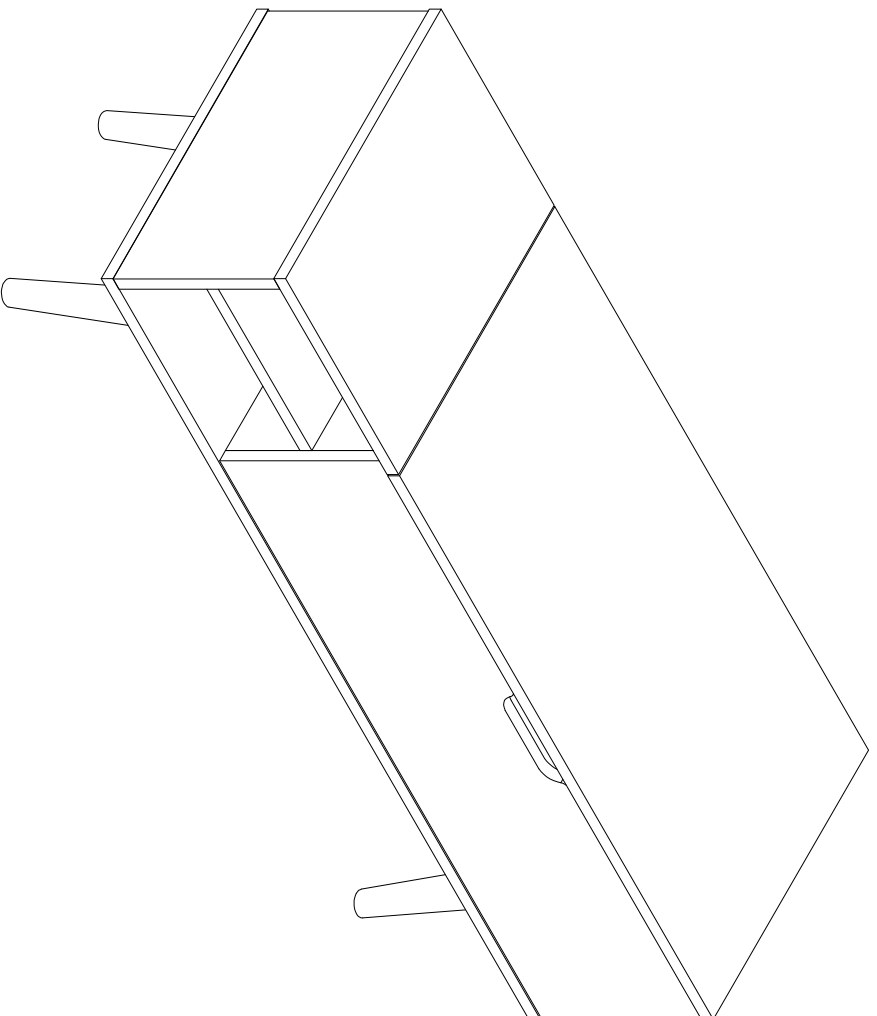


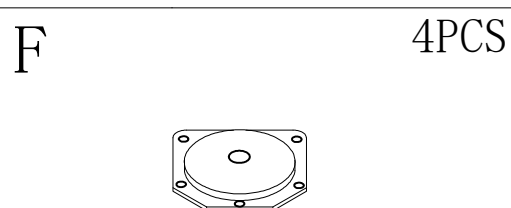
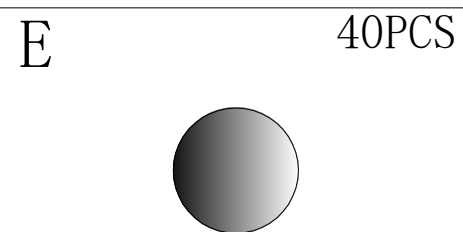
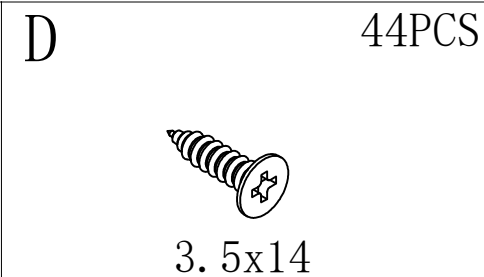
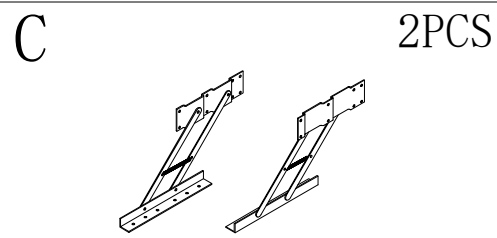
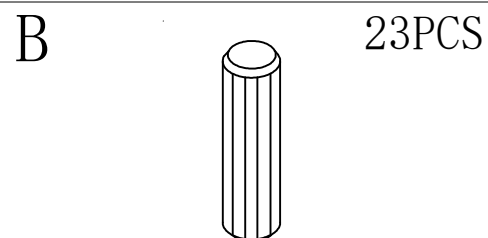
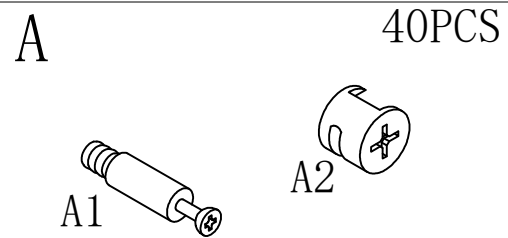
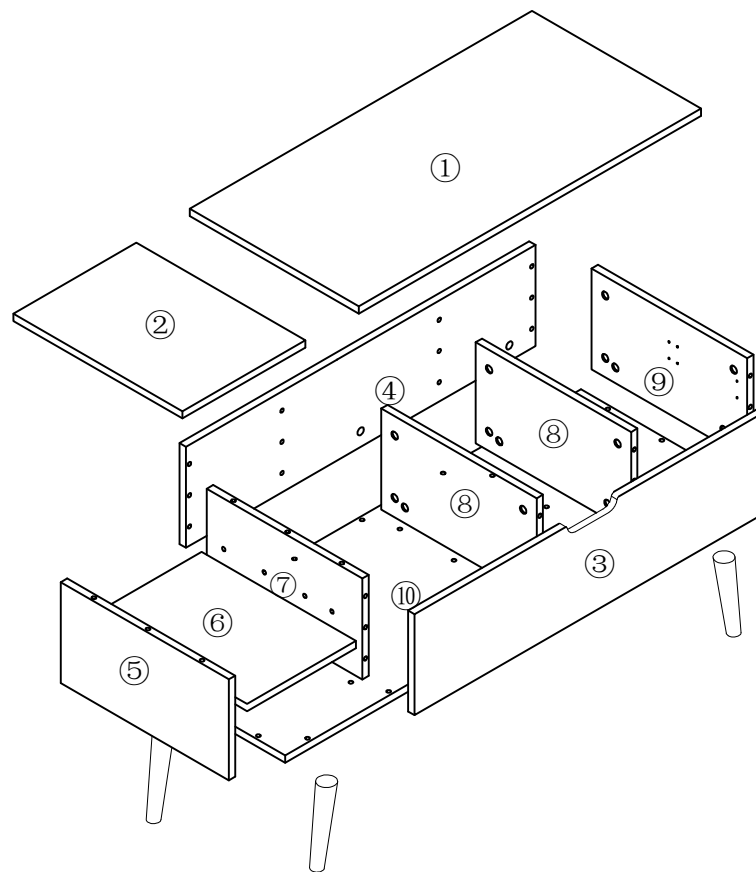
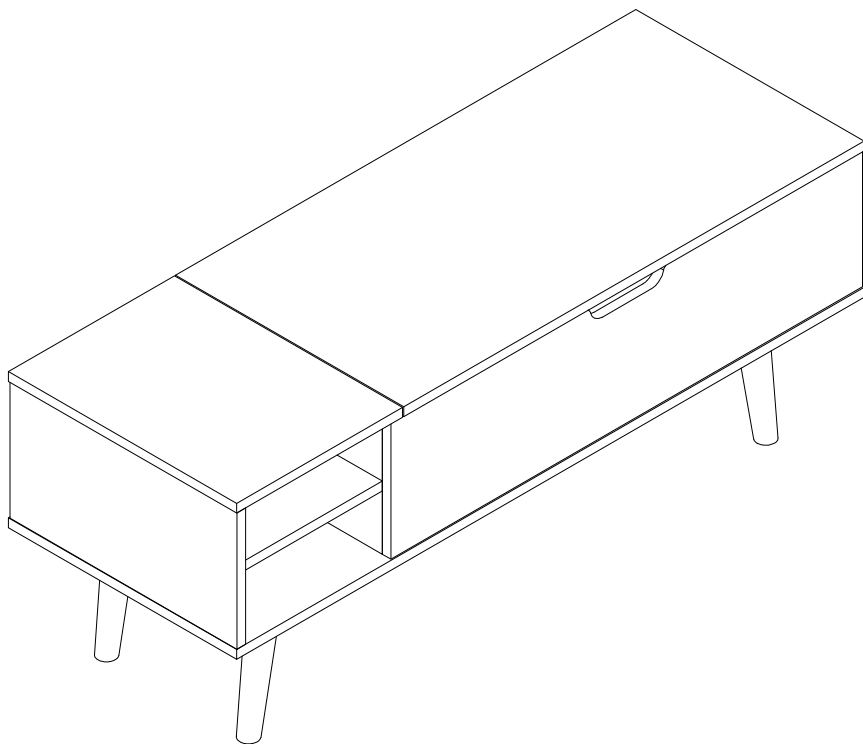
ALINE

Lift Top Coffee Table with Wood Leg

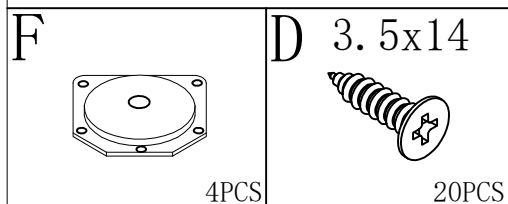
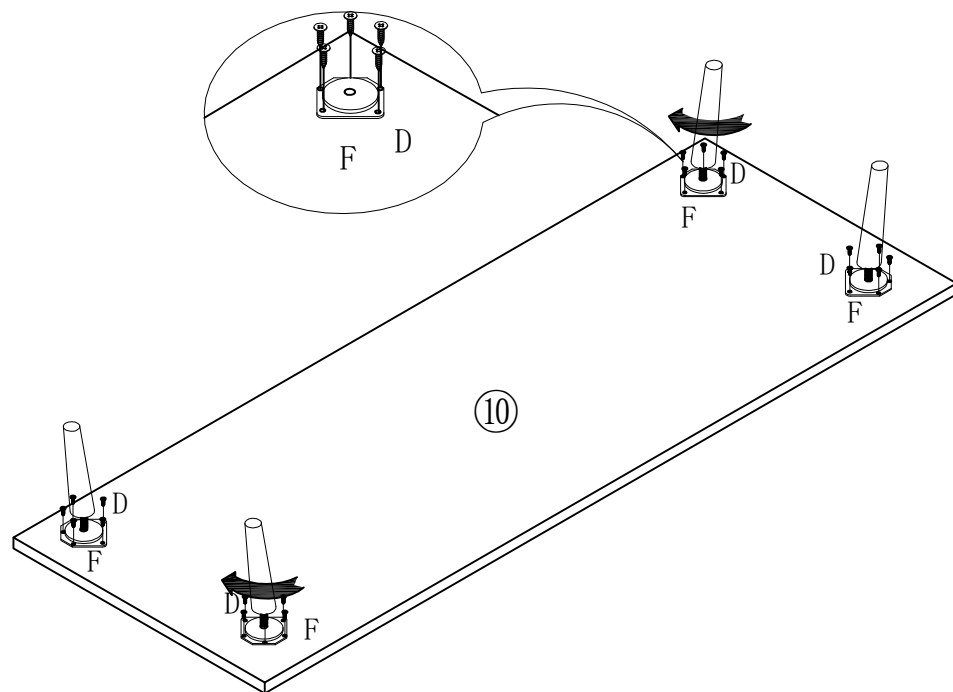


Before start assembling:

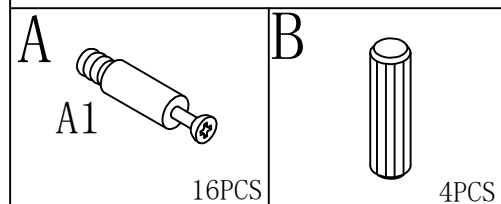
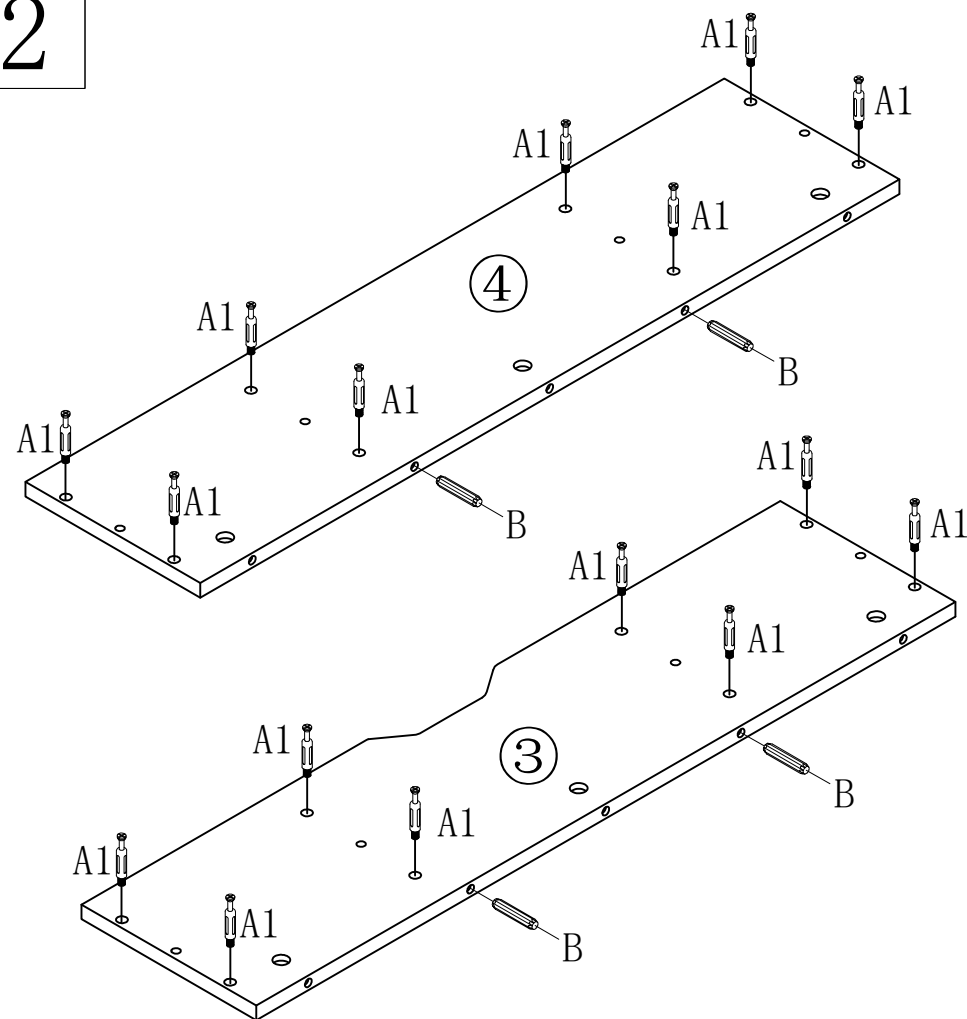
- Check that all pieces are there, list of all parts is on next page.
- When assembling, be sure to follow proper series of number and letters as shown on instruction, items may look similar but are not interchangeable, and may cause damage to furniture.
- Some panels are not reversible, please follow the direction in the instruction.
- All necessary tools are inside but power tools are recommended for fast assembling (not included).
- 16+.



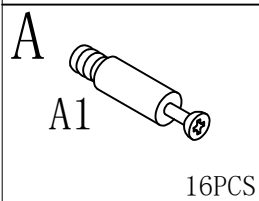
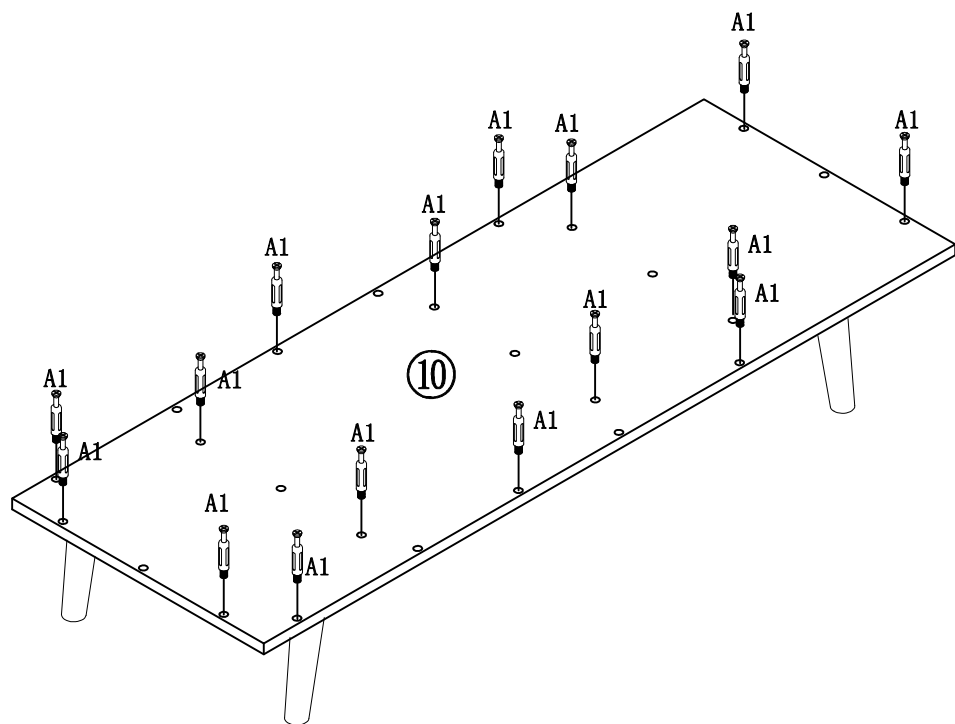
1



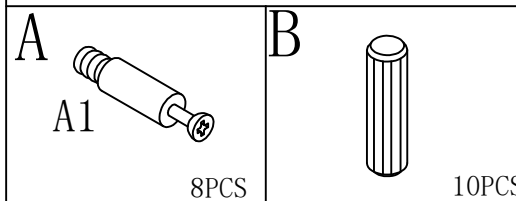
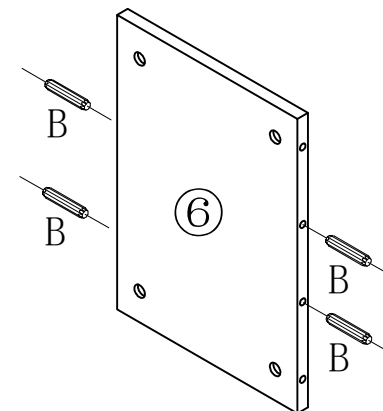
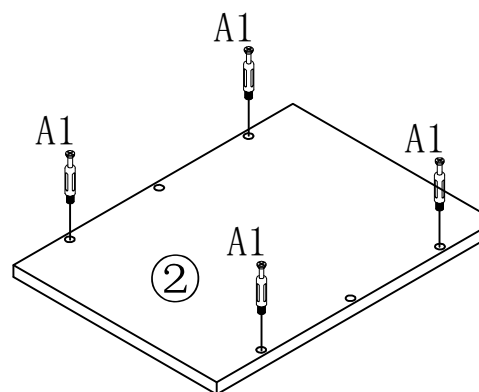
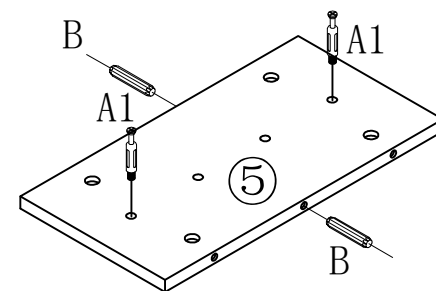
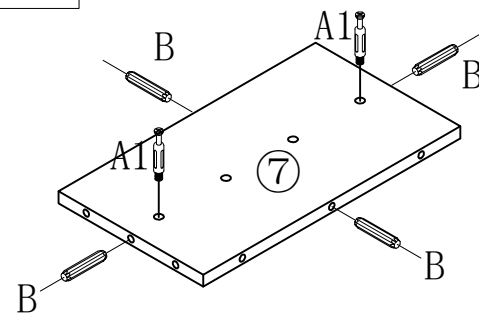
2



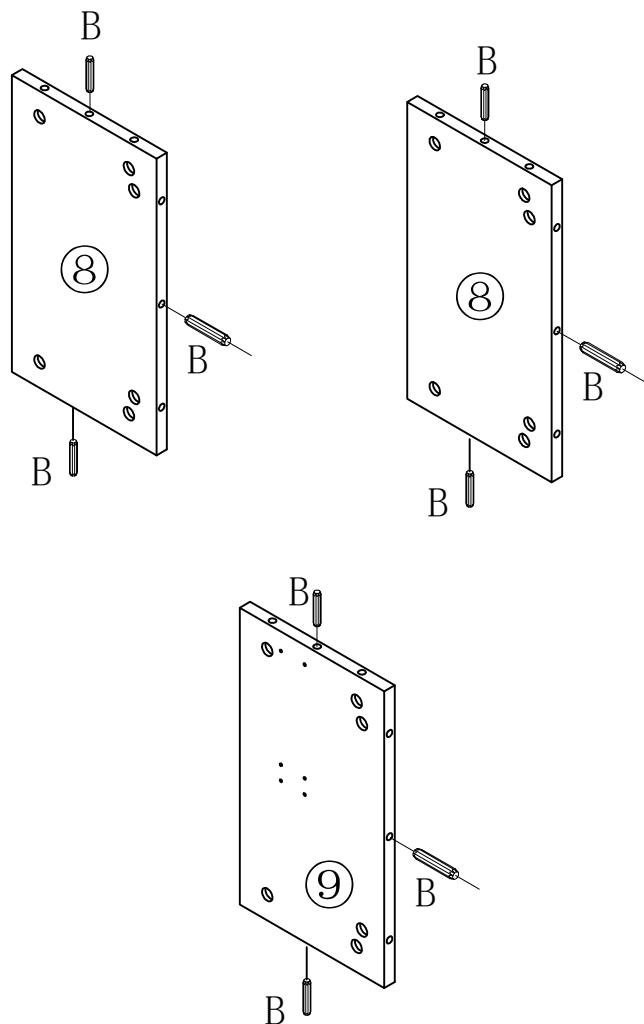
3



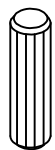
4



5

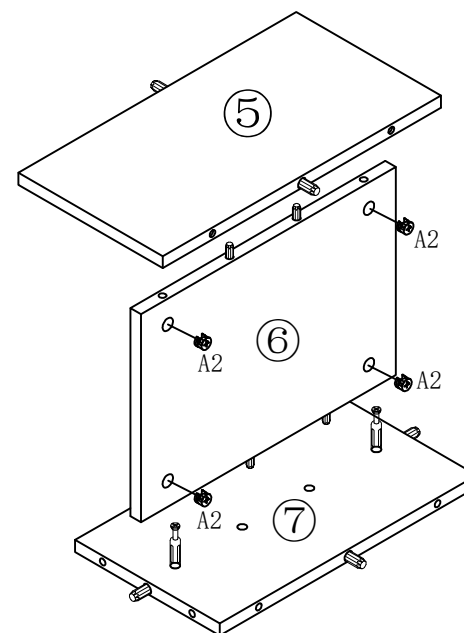
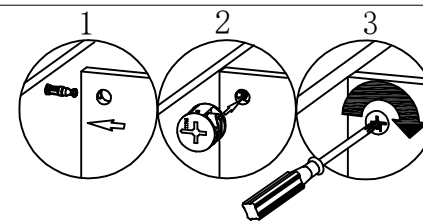


B



9PCS

6

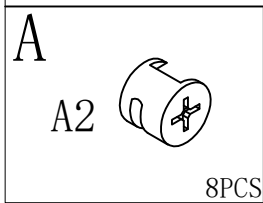
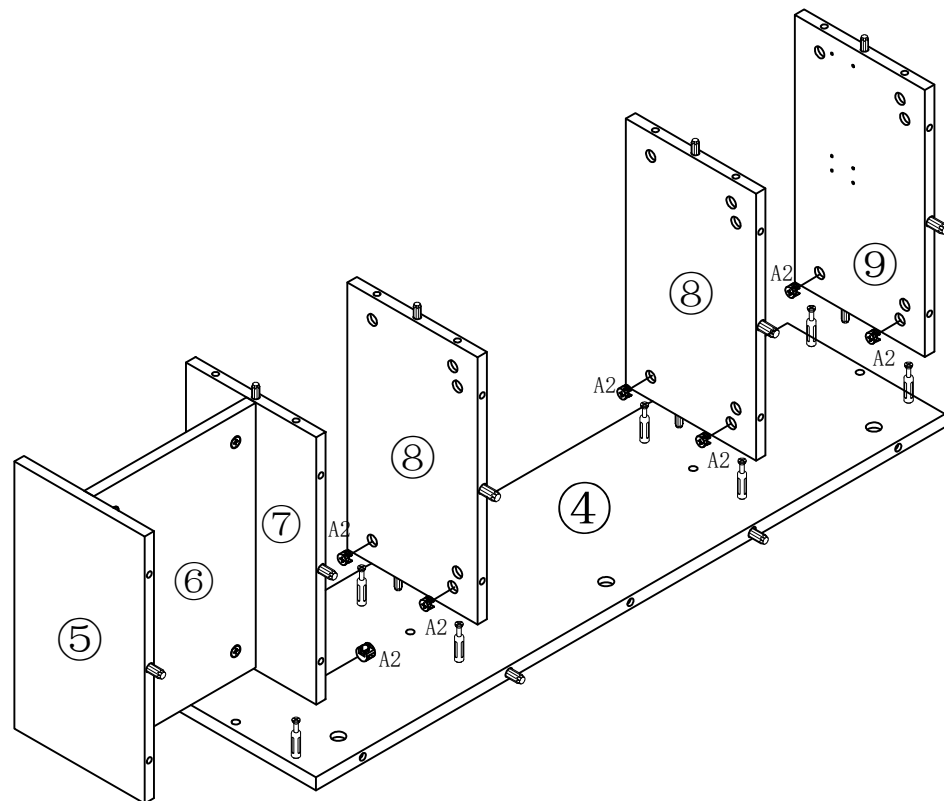
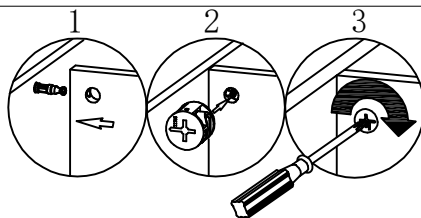


A

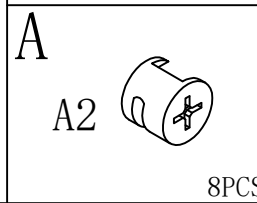
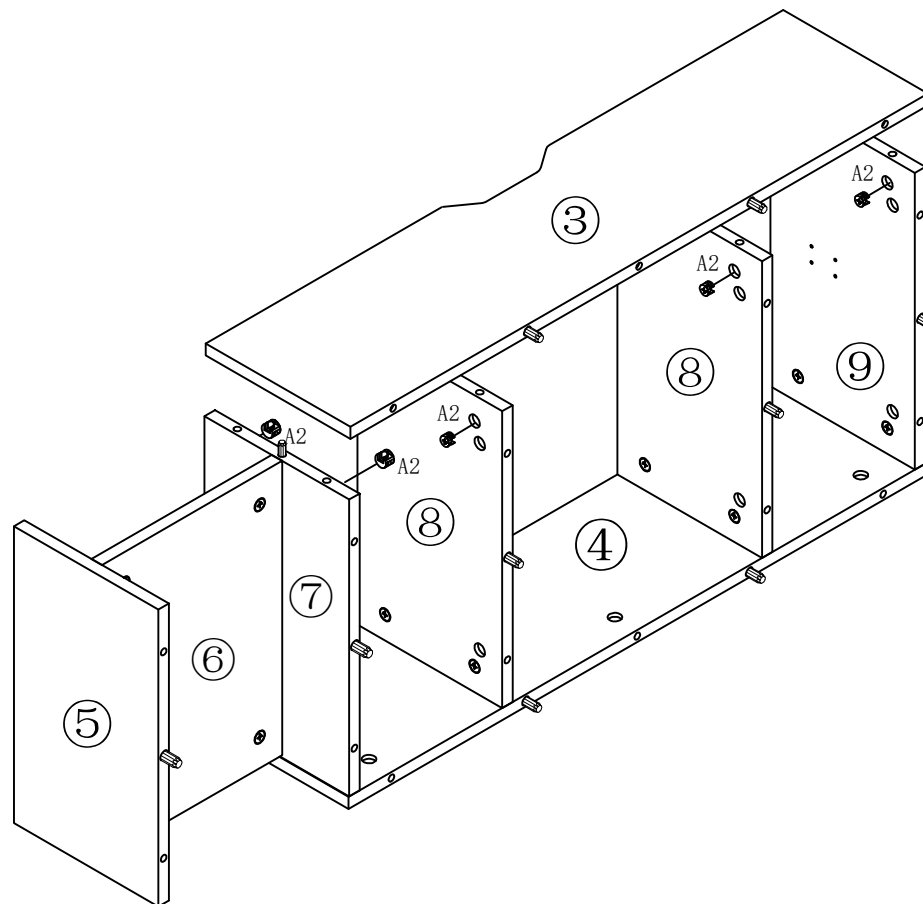
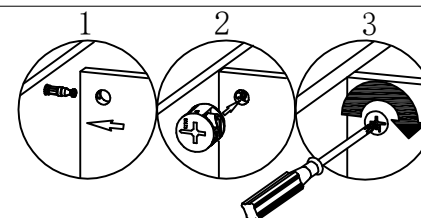


4PCS

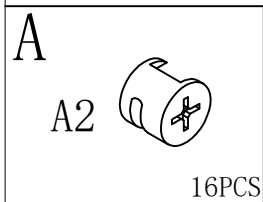
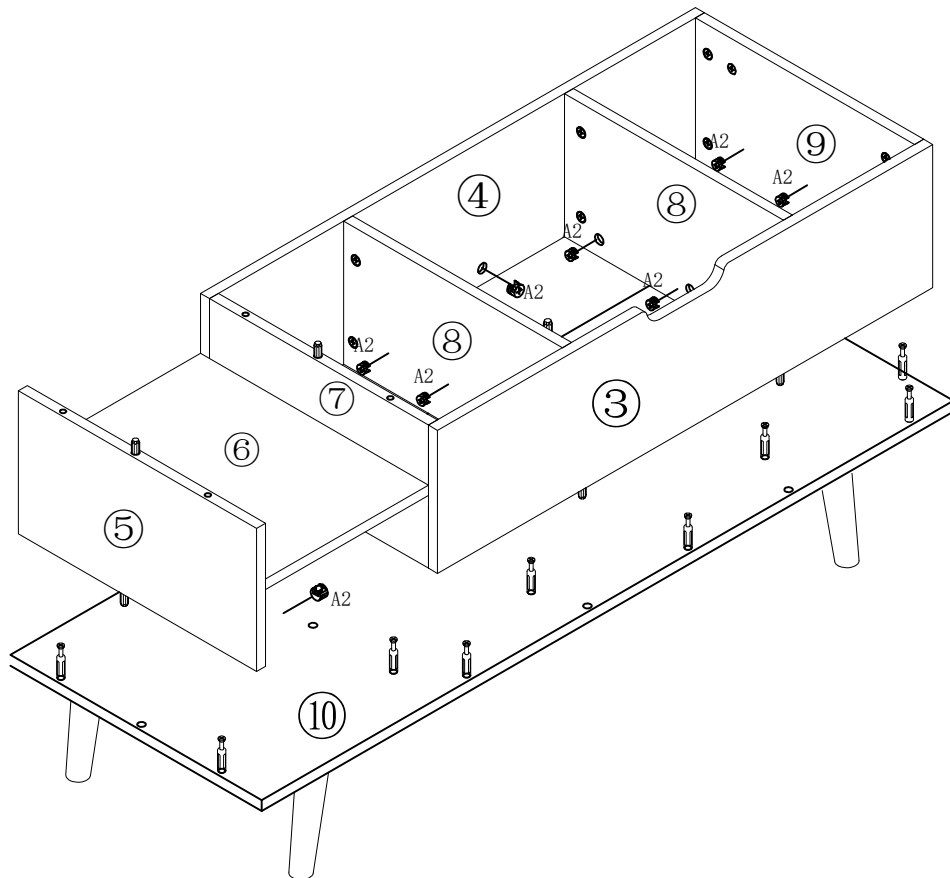
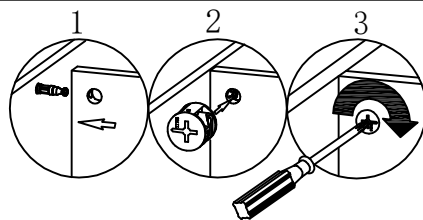
7



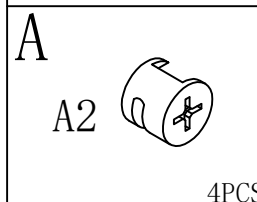
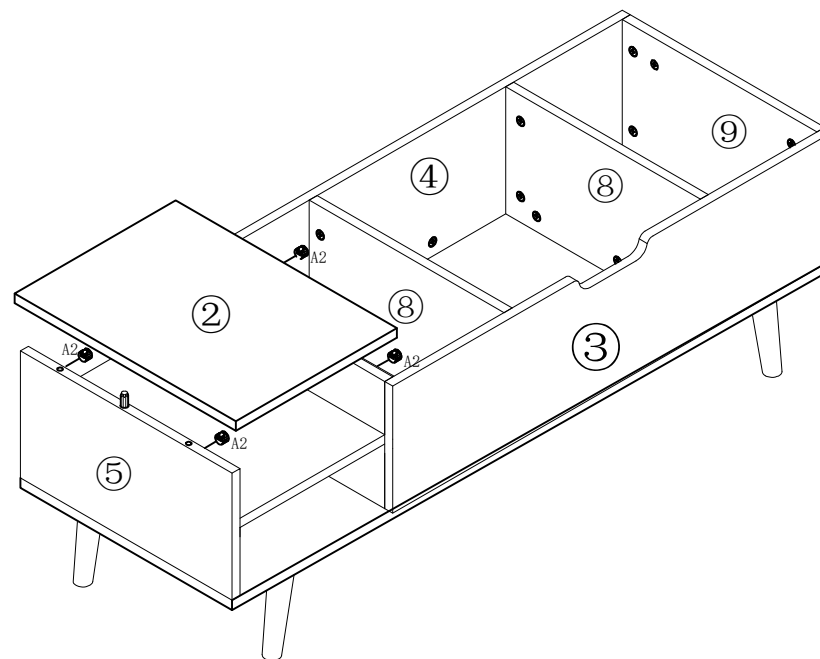
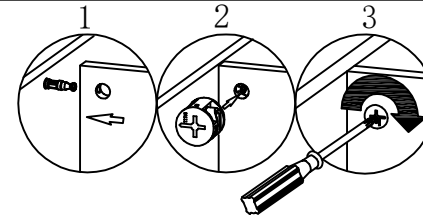
8



9



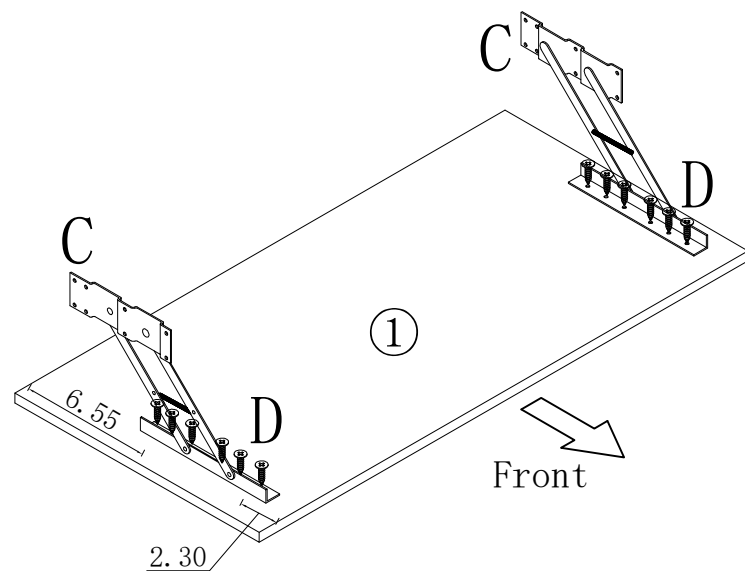
10



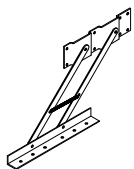


11

Caution: Metal frame C may pop up during installation because of pressure or pulling

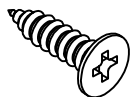


C



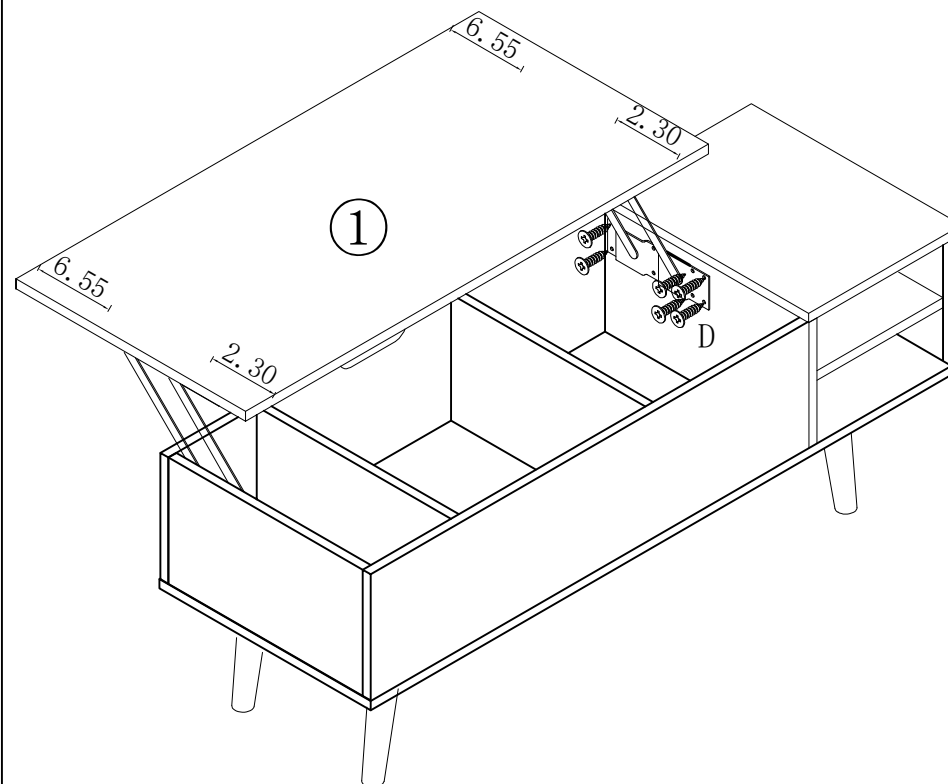
2PCS

D



12PCS

12



D



12PCS