

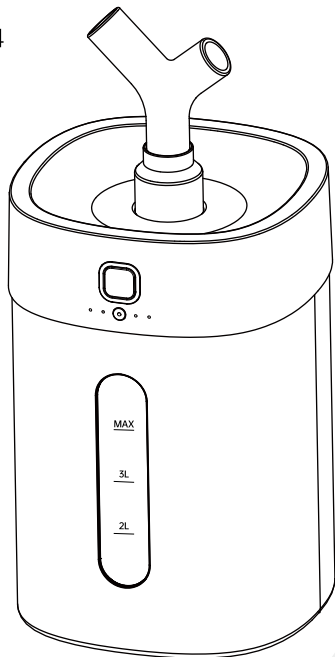
# FeeKaa

---

USER MANUAL

## Stainless Steel Ultrasonic Cool Mist Humidifier

Model: FK-JSQ-0114



Looking for help?

We provide a one-year warranty.

Any questions or concerns, please feel free to contact us at

[info@feekaa.com](mailto:info@feekaa.com)

# Precautions

Thank you for purchasing our cool mist humidifier  
**FK-JSQ-0114.**

Before using this product, please read this manual carefully  
and keep it for future reference.

All pictures shown are for illustration purposes only.  
Actual products may vary due to product improvement.

**For more important product information  
such as usage and maintenance recommendations,  
please visit the official website link or scan the QR code:**

<https://www.feekaa.com/pages/user-guide>



# CONTENTS

|                                |       |
|--------------------------------|-------|
| Safety Precautions.....        | 1-2   |
| Specifications.....            | 3     |
| Package Contents.....          | 3     |
| Features.....                  | 4     |
| Product Structure Diagram..... | 5     |
| Location Requirements.....     | 6     |
| Using Your Humidifier.....     | 7-8   |
| Controls.....                  | 9     |
| Cleaning & Maintenance.....    | 10-12 |
| Troubleshooting.....           | 13-14 |
| Warranty Information.....      | 15-16 |

# Safety Precautions

To prevent injury to the user or other people and property damage, follow all instructions and safety guidelines.

## General Safety

- **Only** use the humidifier as described in this manual.
- Keep the humidifier out of reach from children and infants.
- This humidifier is not to be used by persons (including children) with reduced physical, sensory, or mental capacities, or lack of experience and knowledge, unless they have been given supervision or instruction concerning the use of the appliance by a person responsible for the safety.

## Operation Safety

- **Do not** add water exceed the MAX level marked.
- **Do not** use the humidifier in wet environments.
- **Do not** use the humidifier outdoors. Intended for indoor household use only.
- **Always** make sure to place the humidifier on a flat, level surface before operation.
- **Do not** place the humidifier near sources of heat, such as stovetops, ovens, or radiators.
- **Only** fill the water tank with clean water.  
Never fill the water tank with any other liquids.
- **Do not** cover the nozzle while the humidifier is on.  
Doing so may damage the humidifier.
- **Do not** disassemble, repair or modify the humidifier.  
For any repair, consult Customer Support.
- **Do not** touch the atomizer with your hand after powering it on, or you might get hurt.
- **Do not** let water enter the air outlet or air inlet which will cause the humidifier malfunction.
- **Do not** turn the appliance over when powered on or with water inside to avoid burning internal electronic components.

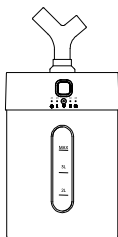
## Electricity Safety

- **Do not** handle the power cord or plug with wet hands.
- **Do not** immerse the humidifier main body, power cord, or plug in water.
- **Do not** use this appliance if the power cord or plug has been damaged.
- **Do not** damage, bend, pull, twist, bundle, or attempt to modify the power cord.
- **Always** turn off and unplug from electrical outlet when not in use and before cleaning.
- **Do not** run power cord under carpeting, furniture, appliances or similar coverings.
- **Do not** let the power cord hang over the edge of a table or counter or touch hot surfaces.

# Specifications

|                  |                                 |
|------------------|---------------------------------|
| Product Name     | Ultrasonic Cool Mist Humidifier |
| Model            | FK-JSQ-0114                     |
| Adapter Input    | 100-240V~                       |
| Humidifier Input | 24V $\equiv$ 1A                 |
| Rated Power      | 24W                             |
| Rated Frequency  | 60Hz                            |

# Package Contents



1 × Humidifier

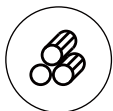


1 × User Manual



1 × Adapter

# Features



Stainless Steel Tank



Top-Fill Design



3 Mist Level



2-8H Timer



Night Light



Quiet Operation



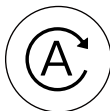
24V Secure Voltage



BPA Free

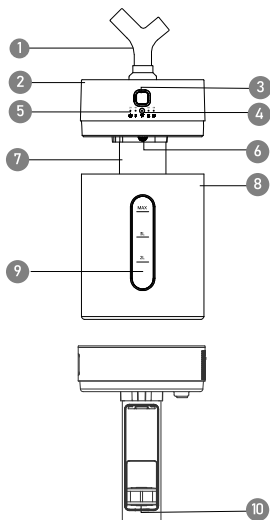


Easy to Clean

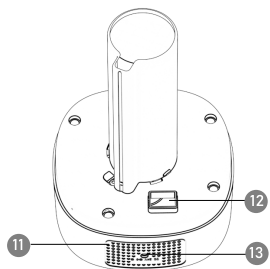


Waterless Auto-off

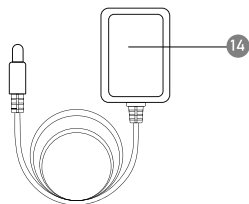
# Product Structure Diagram



1. Nozzle
2. Main Body
3. Power & Mist Level Button
4. Timer & Light Button
5. Indicator
6. Night Light
7. Mist Tube
8. Water Tank
9. Water Level Window



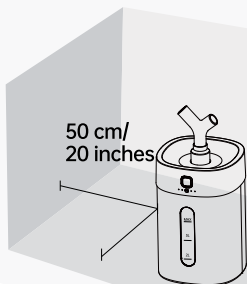
10. Atomizer
11. Air Inlet
12. Air Outlet
13. Power & Plug
14. Adapter



# Location Requirements

Place the humidifier on a flat, level surface, keeping at least 50 cm/20 inches all around from walls or any major obstacles.

**Avoid** using the humidifier in the following situations to prevent water leakage, signal jamming, damage, or injury:



- ⊘ In direct sunlight.
- ⊘ On an unstable platform.
- ⊘ In high temperatures, humidity, or dust.
- ⊘ Areas within reach of children and infants.
- ⊘ Near heat sources like air conditioners, heaters, stoves, or any other objects that emit heat.
- ⊘ Near precision instruments like mobile phones, computers, and other electronic devices.
- ⊘ Near objects that emit radio waves such as radios.
- ⊘ Near areas that can be damaged by mist (such as walls, cupboards, tables, curtains, or carpets).

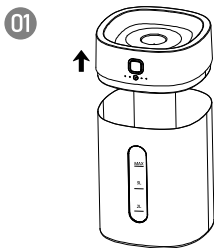
Please follow these guidelines carefully to ensure the safe and proper operation of your humidifier.

If you have any questions or concerns, please refer to the user manual or contact customer support.

# Using Your Humidifier

## Note:

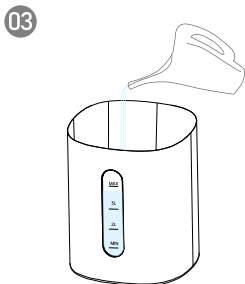
- Rinse and reassemble all parts before first use. (see **Cleaning**, page 10-11)
- We recommend using purified or distilled water to prevent white powder residue from forming.



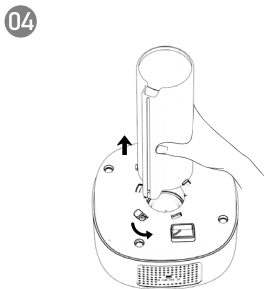
Take out the main body from the water tank.



Take out the mist nozzle and adapter from the tank.



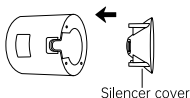
Fill the tank with water and ensure the water level remains between the MIN and MAX lines.



Remove the foam padding by rotating the mist tube counterclockwise.

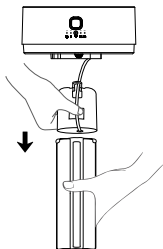
# Using Your Humidifier

05



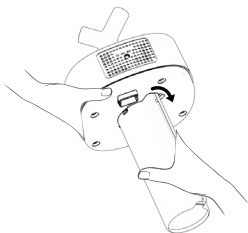
The silencer cover comes pre-installed. If not attached, align its three tabs with the three holes on the atomizer head and press down firmly until it clicks into place.

06



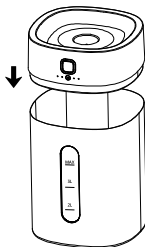
Make sure atomizer faces upward. Make sure wire and the protrusion of the atomizer head are aligned with the slot of mist tube.

07



Align the top tab of the mist tube with the slot on the main body and insert, then rotate clockwise to lock.

08





Place the main body on the water tank and plug in the humidifier.

09



You can choose to have both nozzles spray simultaneously, or only a mist nozzle spray (use the rubber plug to block one nozzle).

# Controls

|   |   |
|---|---|
|  <p><b>Power &amp; Mist Level Button</b></p> | <ul style="list-style-type: none"><li>• <b>1st Tap:</b> Turn on the humidifier with high mist level.</li></ul>                          |
|   | <ul style="list-style-type: none"><li>• <b>2nd Tap:</b> Switch to medium mist level.</li></ul>  |
|   | <ul style="list-style-type: none"><li>• <b>3rd Tap:</b> Switch to low mist level.</li></ul>   |
|   | <ul style="list-style-type: none"><li>• <b>4th Tap:</b> Turn off the humidifier.</li></ul>  |
|  <p><b>Timer &amp; Light Button</b></p>      | <ul style="list-style-type: none"><li>• <b>1st Tap:</b> Enter the timer mode.</li></ul>   |
|   | <ul style="list-style-type: none"><li>• <b>2nd Tap:</b> Set the timer for 2 hours.</li></ul>  |
|   | <ul style="list-style-type: none"><li>• <b>3rd Tap:</b> Set the timer for 4 hours.</li></ul>  |
|   | <ul style="list-style-type: none"><li>• <b>4th Tap:</b> Set the timer for 6 hours.</li></ul>  |
|   | <ul style="list-style-type: none"><li>• <b>5th Tap:</b> Set the timer for 8 hours.</li></ul>  |
|   | <ul style="list-style-type: none"><li>• <b>6th Tap:</b> Exit the timer mode.</li></ul>  |
|   | <ul style="list-style-type: none"><li>• <b>Long press:</b> Press and hold for 3 seconds to enable or disable the night light.</li></ul> |

## Water Shortage Protection:

When the tank is short of water, the humidifier will automatically shut off, and the button indicator will start blinking. Please refill the water tank, ensure the water level remains between the MIN and MAX lines.

# Cleaning & Maintenance

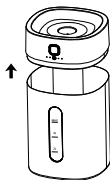
## Note

- Change the water daily to avoid bacteria growth.
- Clean the water tank and atomizer every week.
- The stainless steel tank is dishwasher safe.
- **Do not** immerse the main body in water or liquid.
- **Do not** use any chemical detergents to clean the humidifier.
- **Do not** let water splash into the air outlet or air inlet.
- **Do not** use abrasive cleaners, metal scouring pads, or metal utensils on any part of the humidifier. These will scratch or damage their surfaces.
- **Always** turn off and UNPLUG the humidifier before any cleaning or maintenance.
- If not using the humidifier for 1 week or longer, do not leave water inside. Clean and dry the humidifier instead.

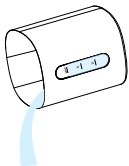
## Daily Cleaning



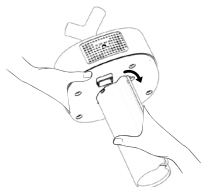
1. Unplug the humidifier.



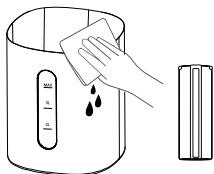
2. Remove the main body from the water tank.



3. Pour out any water from the tank.

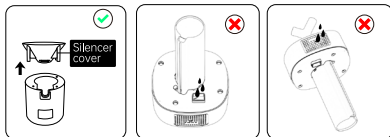


4. Rotate the mist tube counterclockwise and remove the atomizer head from it.

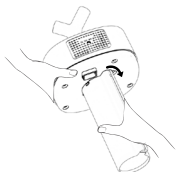


5. Clean the water tank, mist tube, and atomizer with a soft cloth or brush.

**Note:**

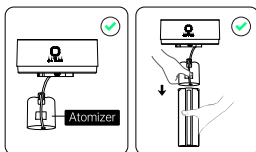


- Gently pull the silencer cover of atomizer straight off. It is safe to wash with water or in the dishwasher.
- When cleaning the atomizer, gently wipe it to avoid damage
- Do not let water enter the air outlet or air inlet, as it might cause a shortcircuit and damage the machine.



6. Reinstall the atomizer head into mist tube. Align the top tab of the mist tube with the slot on the main body and insert, then rotate clockwise to lock.

**Note:**



- Make sure the atomizer faces upward.
- Make sure the wire and the protrusion of the atomizer head are aligned with the slot of mist tube.



7. Wipe the outer surface with a damp soft cloth below 104°F / 40°C.

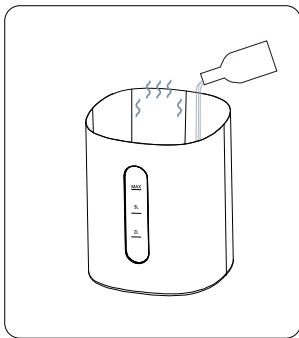
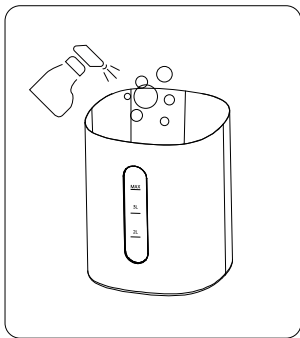


8. Dry all parts with a cloth. Make sure all parts are completely dry before reassembling or storing.

# Cleaning & Maintenance

## Descaling Your Humidifier

1. Fill the tank with diluted citric acid or white vinegar.  
Alternatively, use a cleaner specifically designed for stainless steel products.
- ※ Citric Acid Solution Ratio: 20–30 grams of citric acid per 1 liter of water (approximately 4–6 teaspoons per liter).
  - ※ Vinegar Solution Ratio: 1:1 (e.g., 1 cup vinegar + 1 cup water).
  - ※ Use warm water for better results (104–140°F).



2. Soak for 1 hour. Citric acid or Vinegar will loosen scale (mineral buildup) in the tank.
3. Use a soft cloth or sponge to wipe the interior of the tank.  
Avoid abrasive tools (e.g., steel wool) that may scratch the surface.
4. Rinse the tank thoroughly until any smell is completely gone.
5. Make sure all parts are completely dry before reassembling or storing.

# Troubleshooting

## Humidifier does not work.

1. Make sure the humidifier is plugged into a working outlet.
2. The humidifier will shut down automatically in the event of low water. Fill the water tank.

## Little or no mist comes out.

1. Make sure the water level remains between the MIN and MAX lines.
2. Make sure the atomizer is in the water and facing upward.
3. Make sure the atomizer is not blocked or clogged. Clean the atomizer.
4. Make sure the foam padding has been removed from the mist pipe.
5. Make sure the air inlet and air outlet are not blocked, and the fan is working well.
6. Turn the mist level to a higher setting.

## White dust appears around humidifier, or scale (mineral buildup) appears in water tank.

1. In some areas, the water is hard. Hard water is high in minerals such as calcium and magnesium, which causes white dust and scale (mineral buildup).
2. We recommend using purified or distilled water to fill the humidifier. Avoid using water with high mineral content, such as tap water.
3. Clean and descale the water tank regularly and keep precision instruments away from the humidifier to avoid damage.

# Troubleshooting

## The mist produces an unpleasant smell.

1. Use purified or distilled water only. It is not recommended to use tap water.
2. Change water regularly to avoid dirty water accumulation.
3. Clean the humidifier and keep it dry for 12 hours with the cover detached.

## Humidifier makes a loud or unusual noise.

There might be little water or the humidifier might be placed on an unstable surface. Put the humidifier on a solid and stable surface and fill the water tank.

## The area around the humidifier is damp or wet from condensation.

1. The humidity may be too high.  
Turn down the mist level, or turn off the humidifier.
2. The humidifier may be placed in a non-ventilated area. Open a window to ensure proper airflow for the humidifier, or move the humidifier to a more well-ventilated room.

## Humidifier has some water stains inside.

Each humidifier will be well-tested for its humidifying function before leaving the factory to ensure its normal operation. If there are some water stains inside the humidifier, it is normal and does not affect the user experience.

If your problem is not listed, please contact **Customer Support**.

# Warranty

## Default One-Year Warranty

- This appliance is covered by Feekaa warranty for one-year from the date of original purchase.
- If you need to return the product, please make sure that it is intact and the packaging boxes and accessories are completely assembled.

## Extend Your Warranty

Extend your warranty by registering your new appliance on our website:  
<https://feekaa.com/pages/warranty>

## Non-Warranty Policy

The warranty will not apply in cases of:

- Damage that occurs after the warranty period has expired.
- Damage caused by natural disasters or other force majeure events.
- Damage caused by non-observance of the directions and instructions in User Manual.
- Damage caused by abuse, misuse, improper or inadequate maintenance.
- Normal wear and tear, including parts that might wear out over time.
- Disassembly, repair, service, or alteration of the product performed by an unauthorized repair person.

## Warranty Requirements

Claiming your limited warranty service in 4 simple steps:

1. Make sure your product is within the specified limited warranty period.
2. Provide the warranty card and the order ID or proof of purchase.
3. Describe the problems you are experiencing in detail and provide pictures or videos if possible.
4. Contact our Customer Support Team via [info@feekaa.com](mailto:info@feekaa.com)
  - Please note that we cannot provide warranty service without above information.
  - Thank you for choosing our product, and we hope you enjoy using it.
  - If you have any questions or concerns, don't hesitate to contact us.

# Warranty Card

|                  |   |
|------------------|---|
| Model            | FK-JSQ-0114                             |
| Warranty Period  | Within 1 year from the date of purchase |
| Date of Purchase | Year          Month          Date       |
| Purchase Store   |   |
| Order ID         |   |
| Customer         | Name                                    |
|                  | Address                                 |
|                  | Phone Number                            |

**FeeKaa**