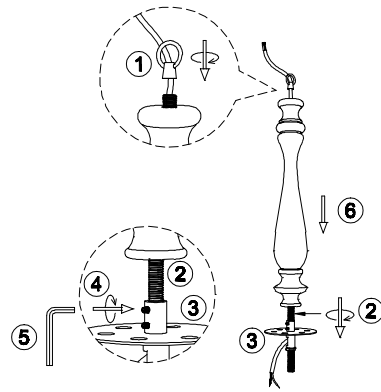
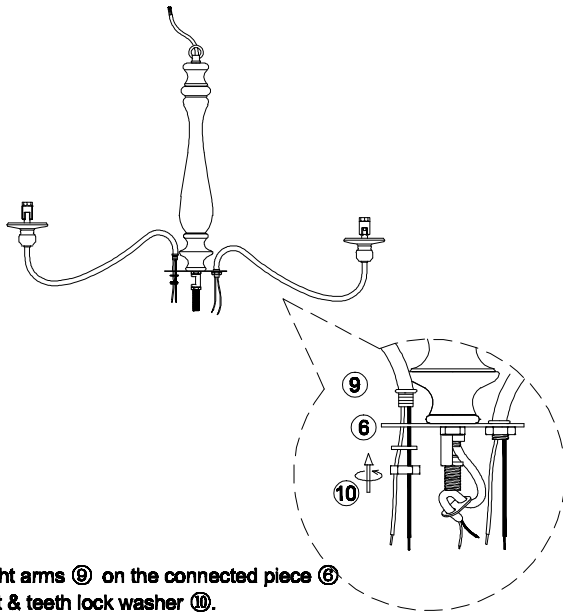


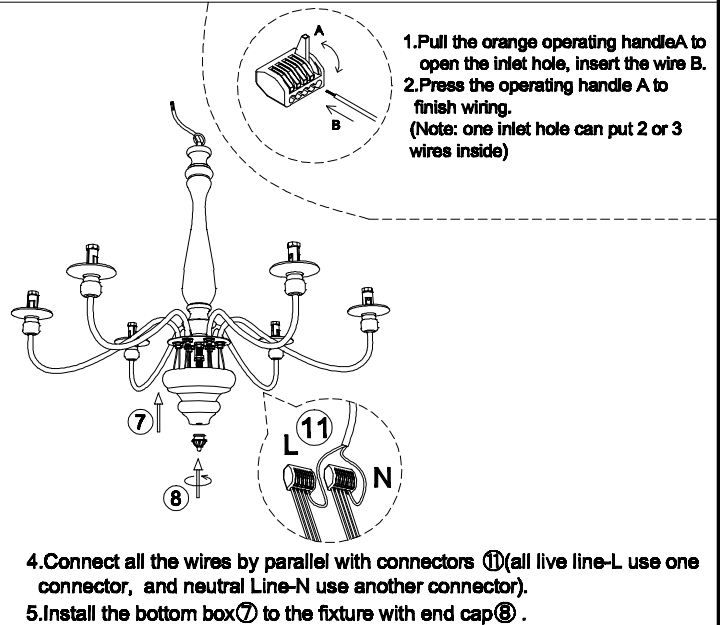
- ① hanging ring 1PCS
- ② threaded rod 1PCS
- ③ hanging vase 1PCS
- ④ grub screw 2pcs
- ⑤ hex key 1pcs
- ⑥ connected piece 1PCS
- ⑦ bottom box 1PCS
- ⑧ end cap 1PCS
- ⑨ light arm D5037-6:6PCS D5037-8:8PCS
- ⑩ lock nut & teeth lock washer D5037-6:6PCS D5037-8:8PCS
- ⑪ splicing connector 2PCS
- ⑫ chain 1PCS
- ⑬ canopy 1PCS
- ⑭ cap nut 2PCS
- ⑮ X 1PCS
- ⑯ X 1PCS
- ⑰ X 3PCS
- ⑱ X 3PCS
- ⑲ X 3PCS
- ⑳ X 3PCS
- ㉑ X 1PCS
- ㉒ X 3PCS
- ㉓ X 3PCS
- ㉔ X 3PCS
- ㉕ X 3PCS
- ㉖ X 3PCS
- ㉗ X 3PCS
- ㉘ X 3PCS
- ㉙ X 3PCS
- ㉚ X 3PCS
- ㉛ X 3PCS
- ㉜ X 3PCS
- ㉝ X 3PCS
- ㉞ X 3PCS
- ㉟ X 3PCS
- ㊱ X 3PCS
- ㊲ X 3PCS
- ㊳ X 3PCS
- ㊴ X 3PCS
- ㊵ X 3PCS
- ㊶ X 3PCS
- ㊷ X 3PCS
- ㊸ X 3PCS
- ㊹ X 3PCS
- ㊺ X 3PCS
- ㊻ X 3PCS
- ㊼ X 3PCS
- ㊽ X 3PCS
- ㊾ X 3PCS
- ㊿ X 3PCS



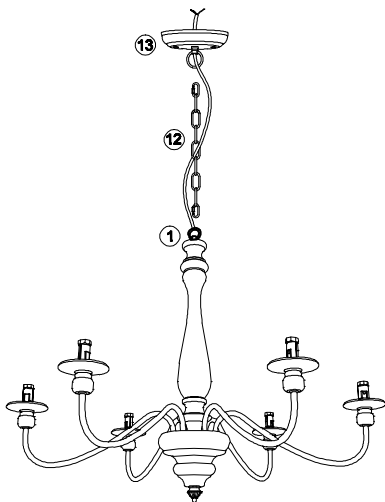
1. Let the main wire of the light fixture go through the threaded rod ②, rotate to fix threaded rod ② on the connected piece ⑥, lock it with grub screw ④ by hex key ⑤.
2. Let the hanging vase ③ go through the threaded rod ②, lock it with hanging ring ①.



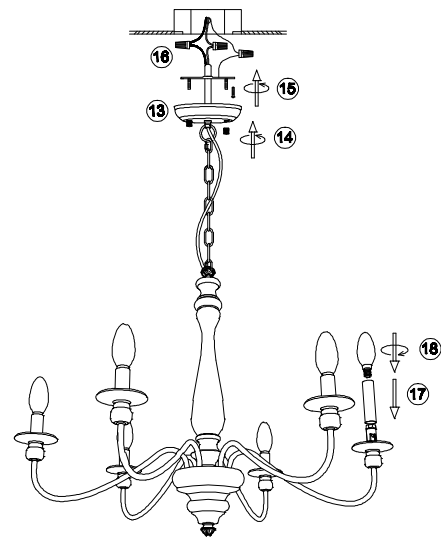
3. Install the light arms ⑨ on the connected piece ⑥ with lock nut & teeth lock washer ⑩.



1. Pull the orange operating handle A to open the inlet hole, insert the wire B.
2. Press the operating handle A to finish wiring. (Note: one inlet hole can put 2 or 3 wires inside)
4. Connect all the wires by parallel with connectors ⑪ (all live line-L use one connector, and neutral Line-N use another connector).
5. Install the bottom box ⑦ to the fixture with end cap ⑧.



6. Connect the light fixture with canopy ⑬ with chain ⑫, let the wire go through the chain ⑫ and canopy ⑬.



7. Install the bracket to the ceiling junction box with screw ⑮.
8. Connect the wire to your home line.
9. Install the fixture to the bracket with cap nut ⑭.
10. Put the cylinder tube ⑰ on the bulbholder and install the bulbs ⑱.

Please read carefully before installation!!!

Note : Please make sure that the electricity is powered off during installation !  
Only a professional electrician should install this kind of product !