

FRAMED MIRROR

RECTANGLE

Colors/Finishes: Matte Black(MB),White(WT),Brushed Gold(BG)

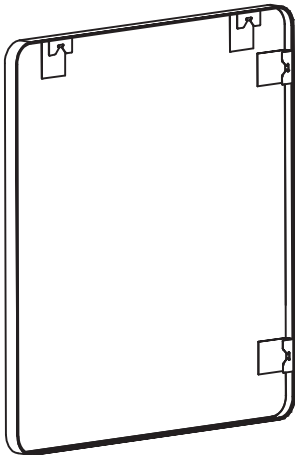
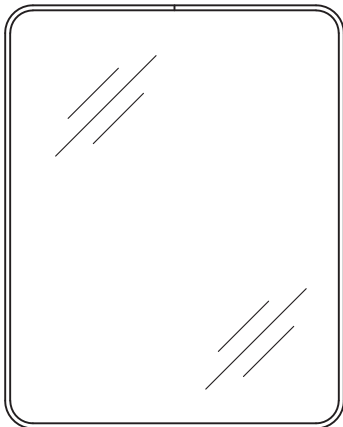
Nominal Dimension:	24W*1.5D*32H inches	24W*1.5D*36H inches
	30W*1.5D*36H inches	36W*1.5D*36H inches
	40W*1.5D*32H inches	48W*1.5D*36H inches
	55W*1.5D*32H inches	60W*1.5D*28H inches

FEATURES:

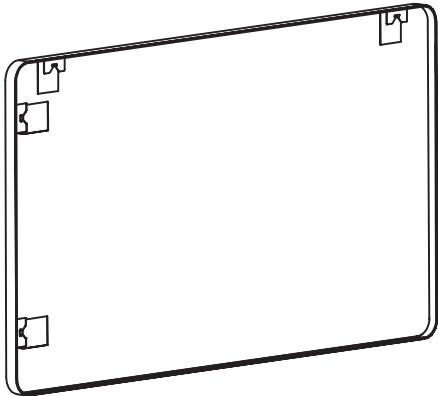
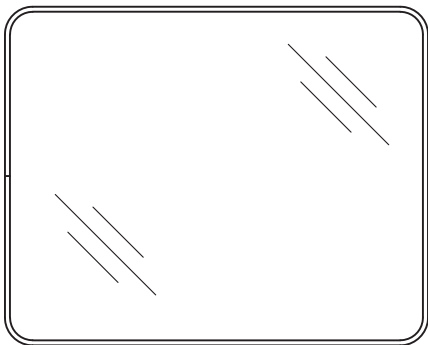
- Durable aluminum frame
- Modern sloping edge design
- Mirror hangs vertically or horizontally
- Long lasting color finish

PRODUCT DIAGRAMS:

Vertical Assembly



Horizontal Assembly



All dimensions and specifications are nominal and may vary. Use actual products for accuracy in critical situations.

Mirror Installation

SUGGESTED TOOLS AND MATERIALS



Screwdriver



Level



Drill



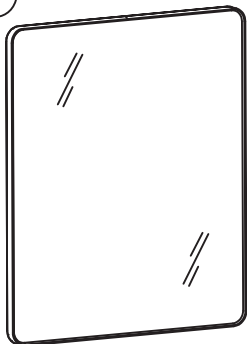
Tape Measure



Safety Glasses

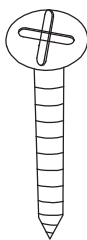
PARTS

①



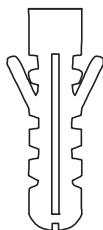
MIRROR(1 PCS)

②



ST4.2*45(2 PCS)

③

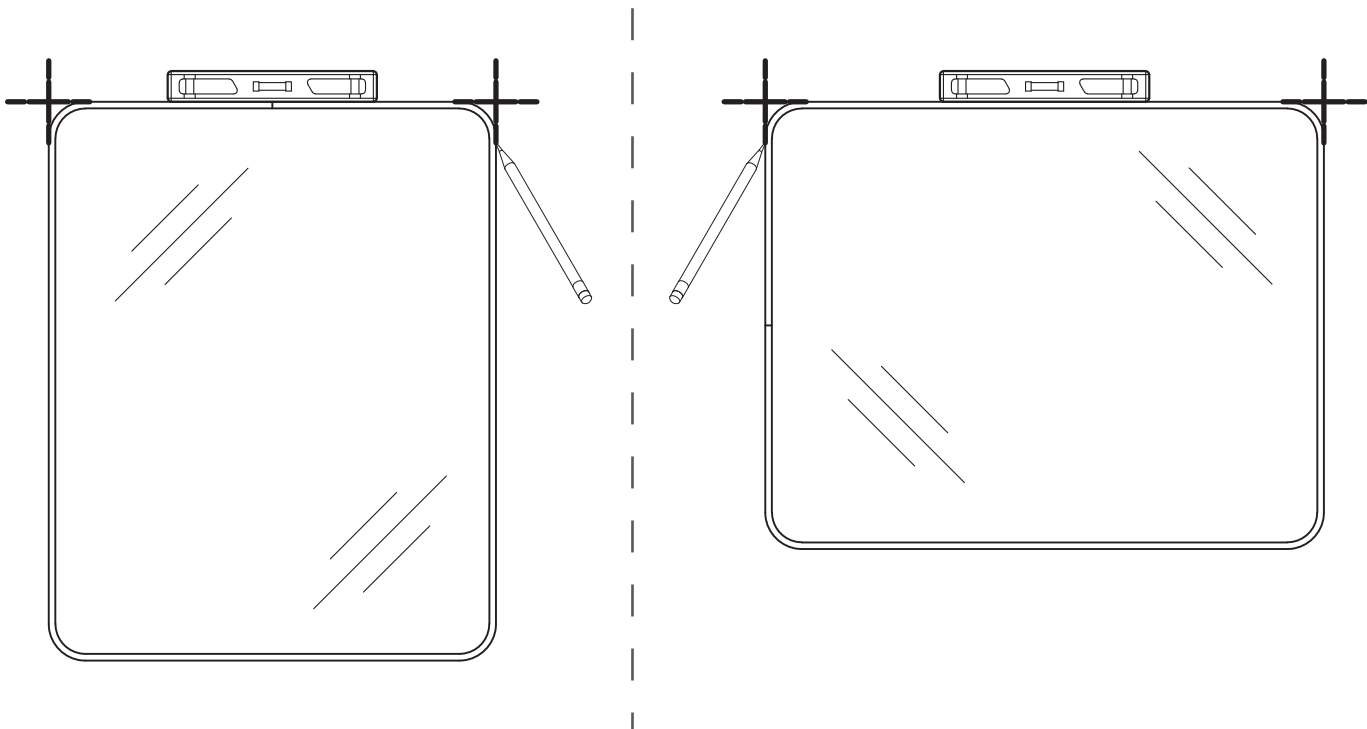


WALL PLUG(2 PCS)

INSTALLATION INSTRUCTIONS

STEP 1

Select the desired position of the mirror. Level and mark the location.

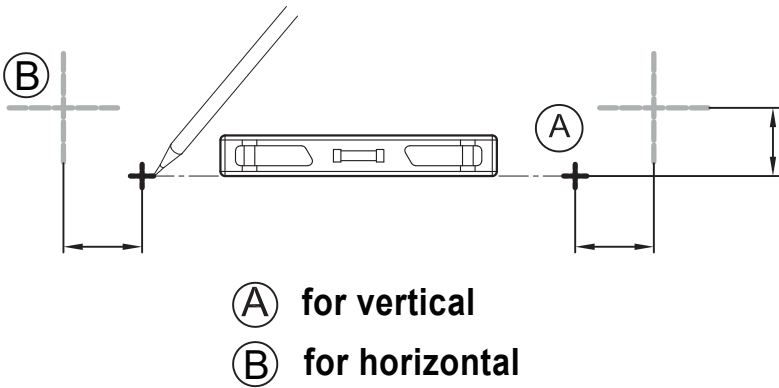


Mirror Installation

STEP 2

Mark the drilling locations and ensure marking are leveled, based on vertical or horizontal mounting. See chart below.

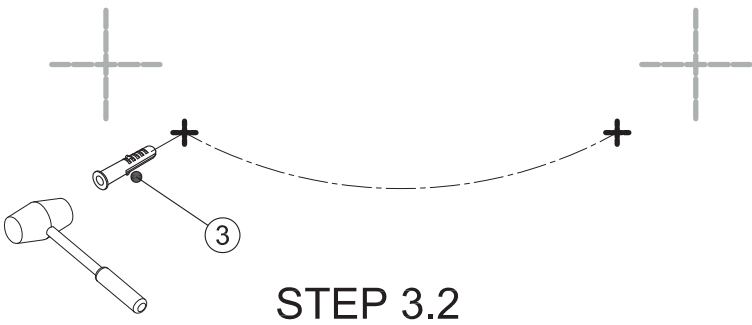
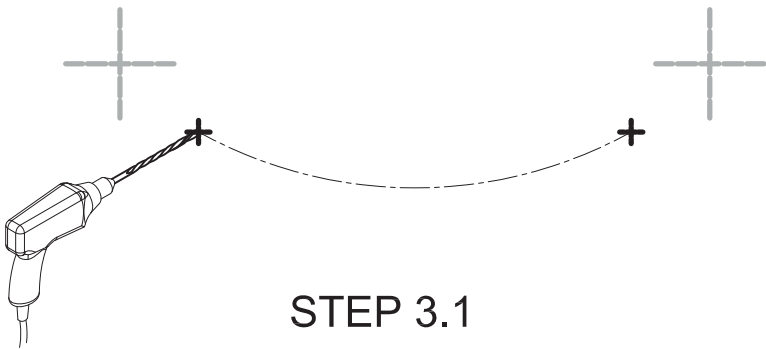
Vertical Assembly	Horizontal Assembly
Ⓐ	Ⓑ



STEP 3

3.1 Drill holes about 2" deep at each of the marked locations.

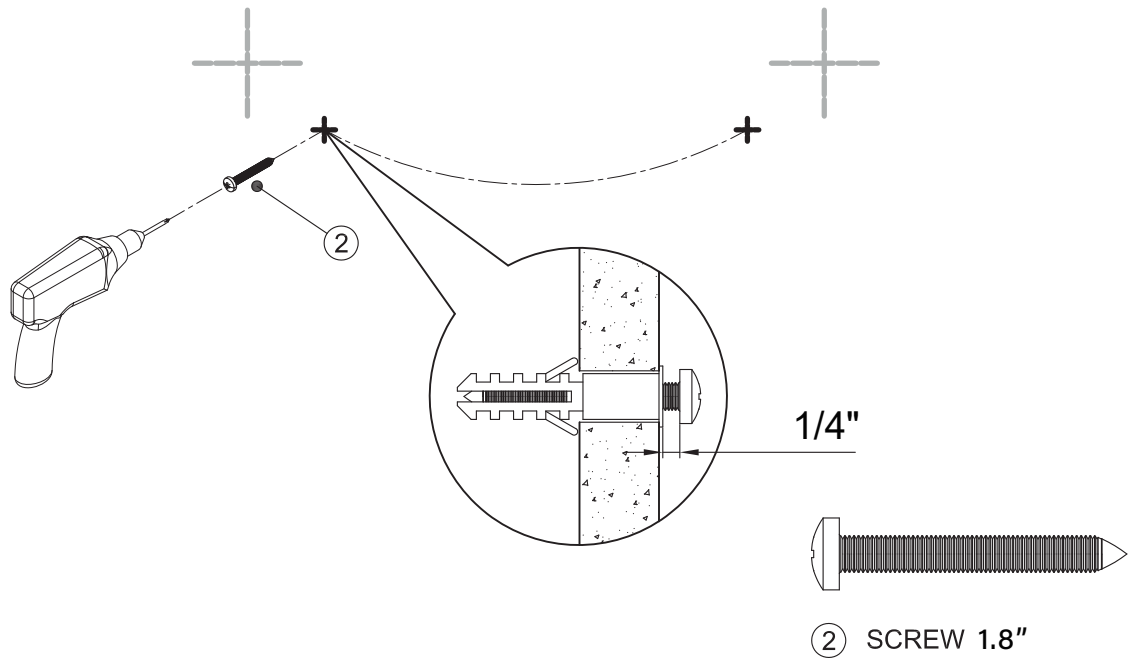
3.2 Insert wall plugs ③.



Mirror Installation

STEP 4

Install Screw ② . Leave a gap of 1/4" between the head of the screw and the wall.



STEP 5

place the mirror against the wall and slide it down, as shown in Figure 2.

