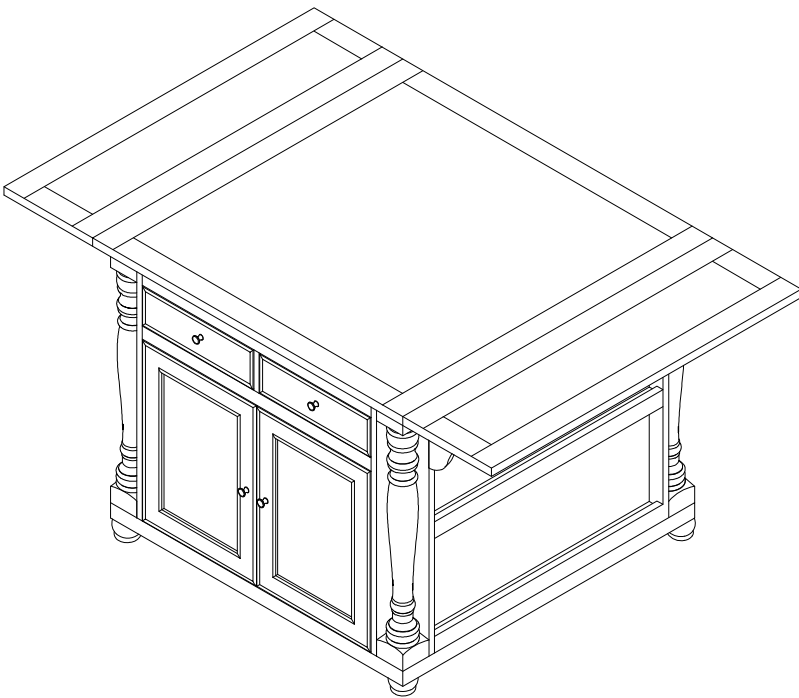


***ASSEMBLY INSTRUCTIONS
COASTER FINE FURNITURE***



Fine Furniture for every stage of life

ASSEMBLY INSTRUCTIONS

ASSEMBLY TIPS:

1. Remove hardware from box and sort by size.
2. Please check to see that all hardware and parts are present prior to start of assembly.
3. Please follow attached instructions in the same sequence as numbered to assure fast & easy assembly.



WARNING!

1. Don't attempt to repair or modify parts that are broken or defective. Please contact the store immediately.
2. This product is for home use only and not intended for commercial establishments.



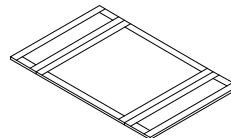
ASSEMBLY TIME

20 MINUTES

PARTS IDENTIFICATION

B1 (BOX 1)

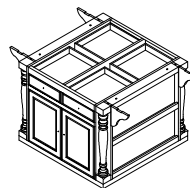
BV KITCHEN CART TOP



1PC

B2 (BOX 2)

AV KITCHEN CART BASE



1PC

CV LEG



4PCS

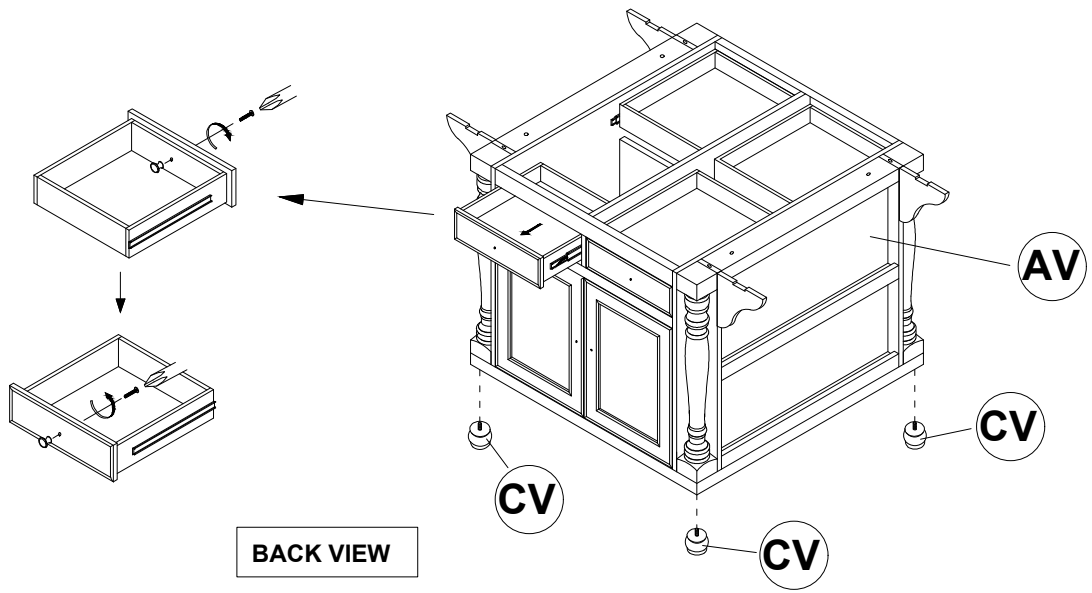
HARDWARE IDENTIFICATION

Z-B2 (BOX 2) - HARDWARE PACK IS LOCATED IN 102270(B2)

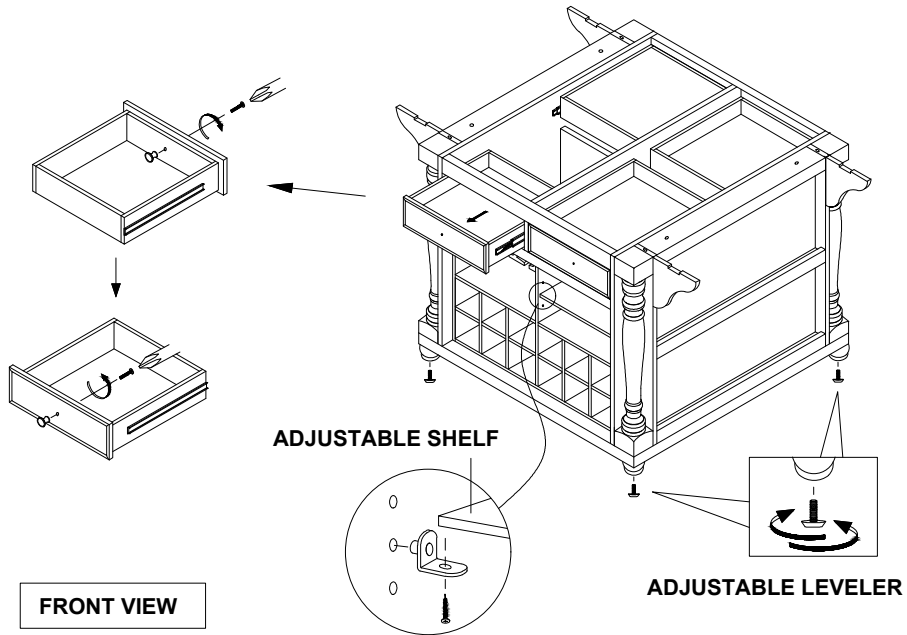
1	ALLEN WRENCH (4MM - RBW)		1PC
2	BOLT (Ø5/16" x 1-3/16" - RBW)		4PCS
3	LOCK WASHER (Ø5/16" - RBW)		4PCS
4	FLAT WASHER (Ø5/16" - RBW)		4PCS
5	GLUE		1PC
6	WOOD PLUG (Ø10 x 30mm)		4PCS

ASSEMBLY INSTRUCTIONS

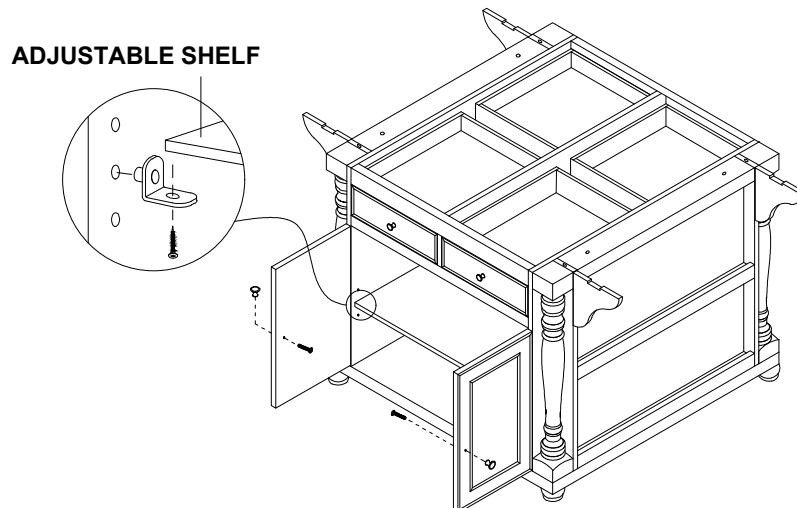
STEP 1



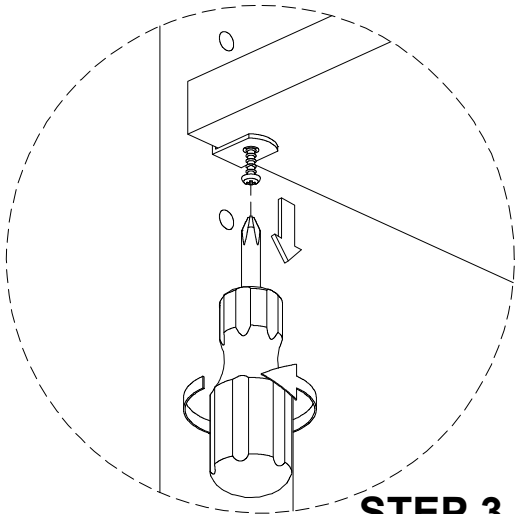
STEP 2



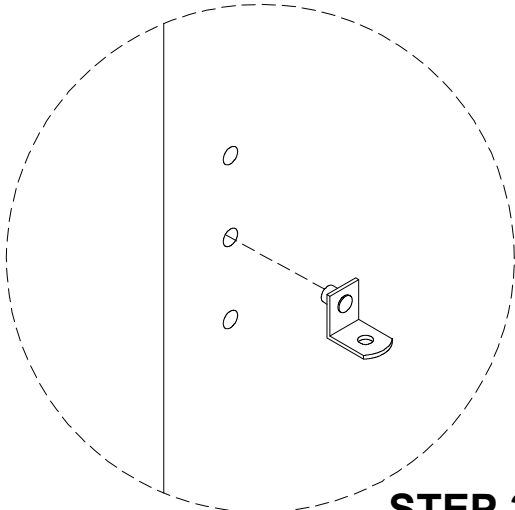
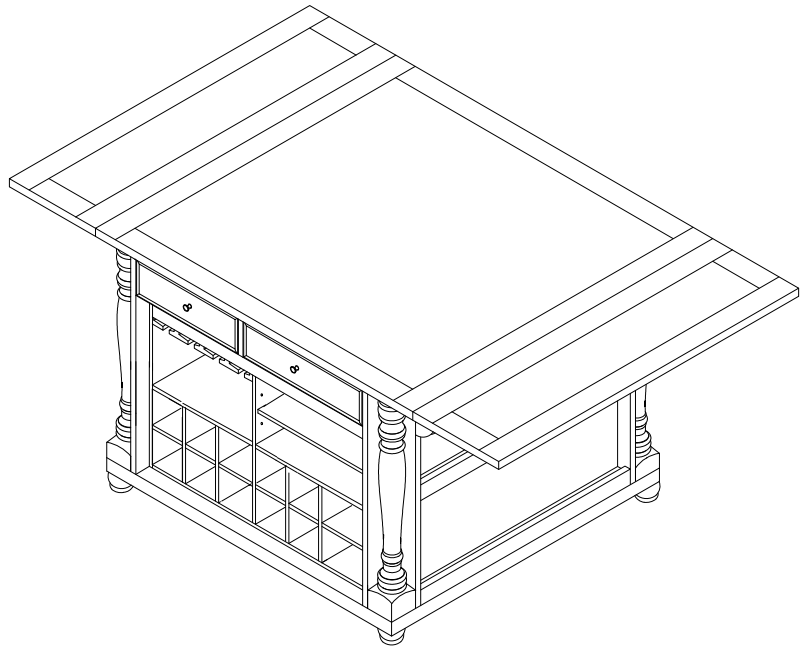
STEP 3



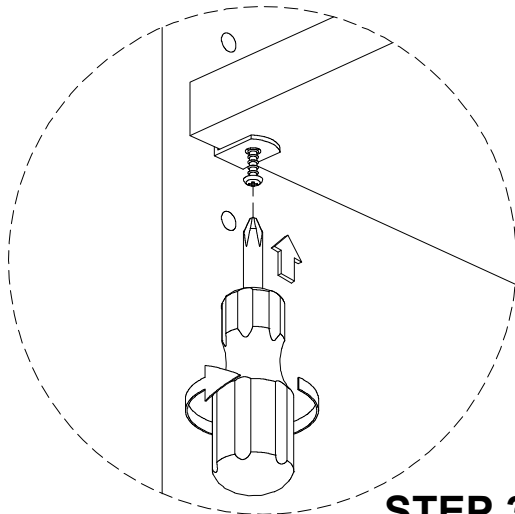
OPTIONAL ADJUSTABLE SHELF



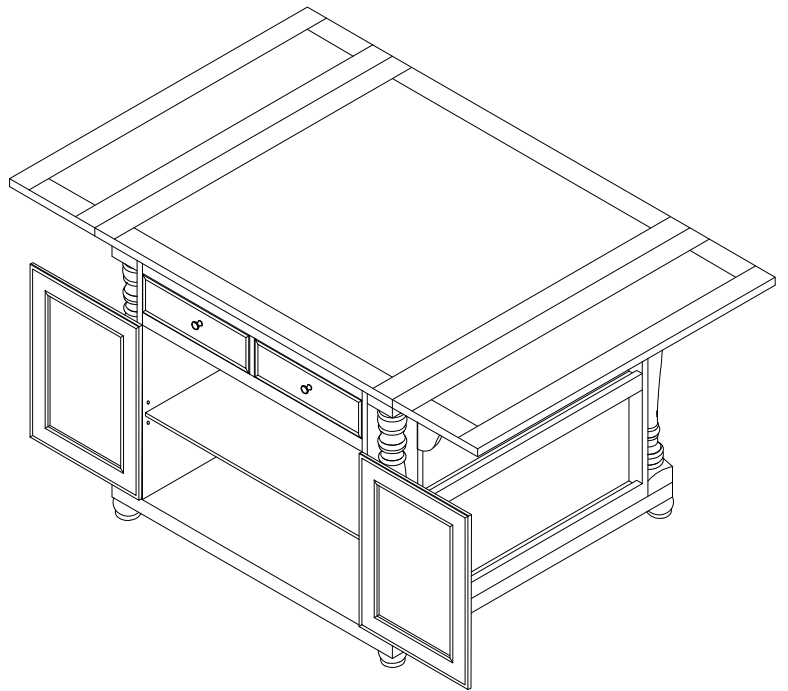
STEP 3.1



STEP 3.2



STEP 3.3

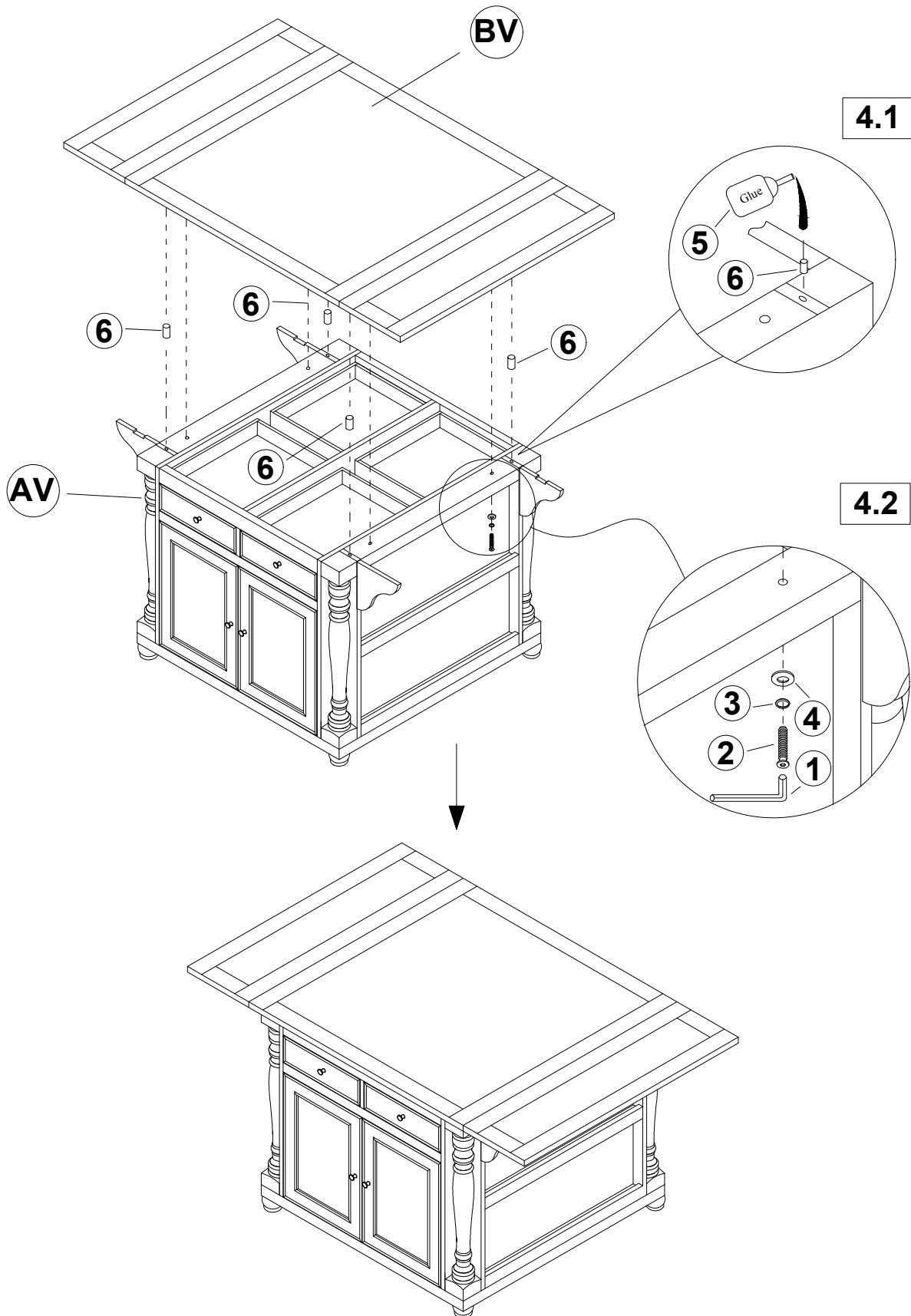


NOTE:

Phillips head screw driver is required in the assembly process; however, manufacturer does not provide this item.

ASSEMBLY INSTRUCTIONS

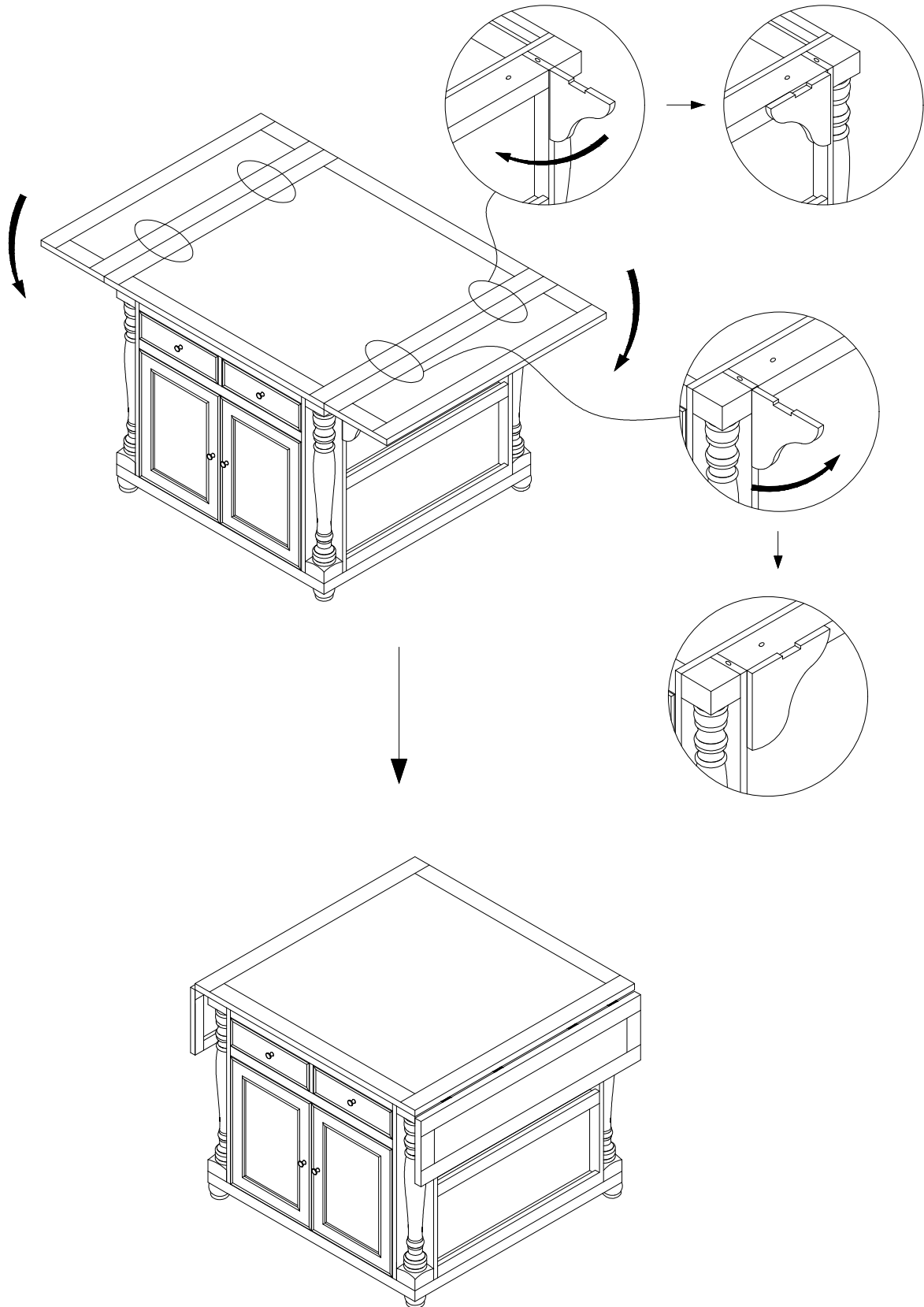
STEP 4



ASSEMBLY INSTRUCTIONS

STEP 5

Close the kitchen cart top

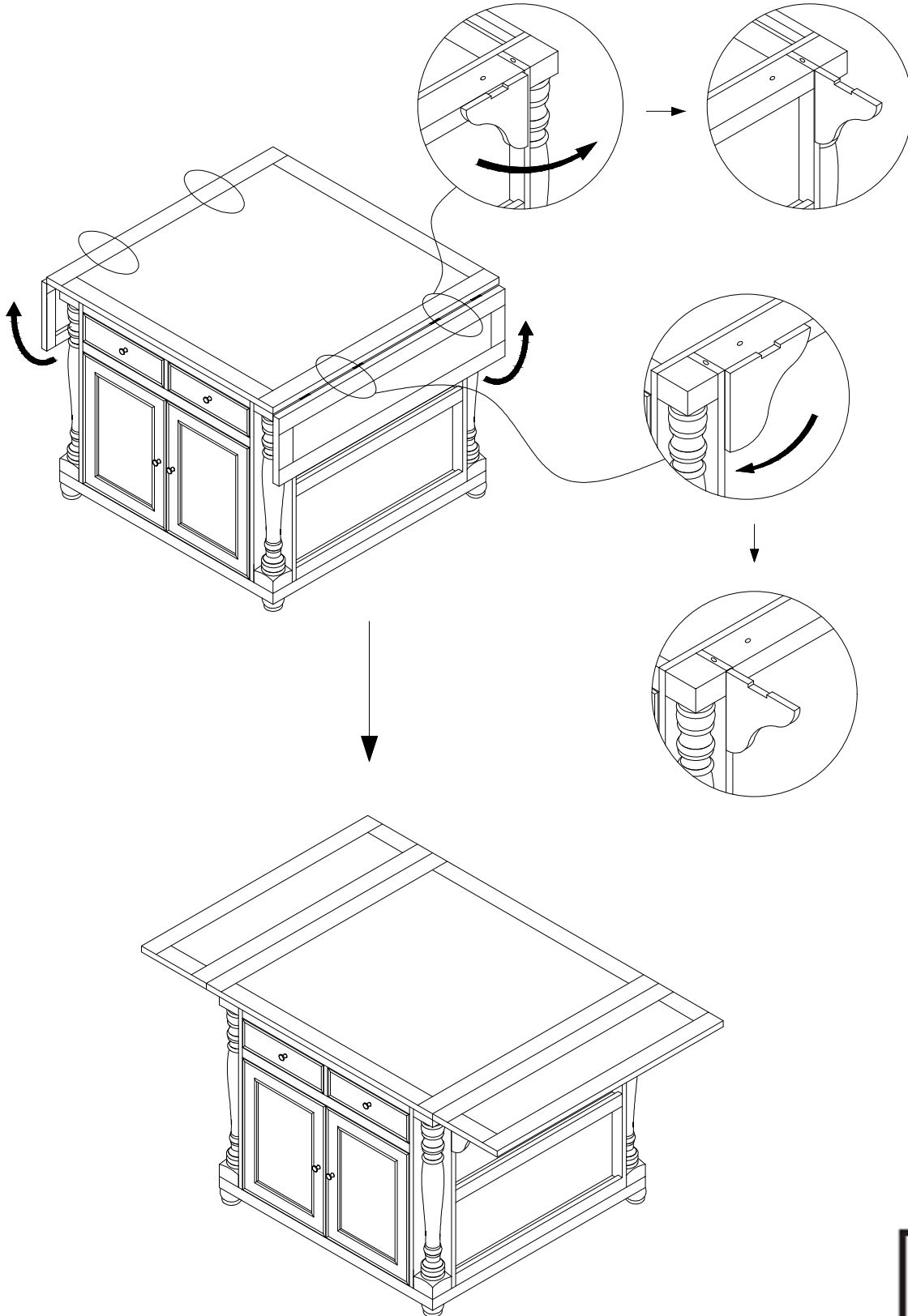


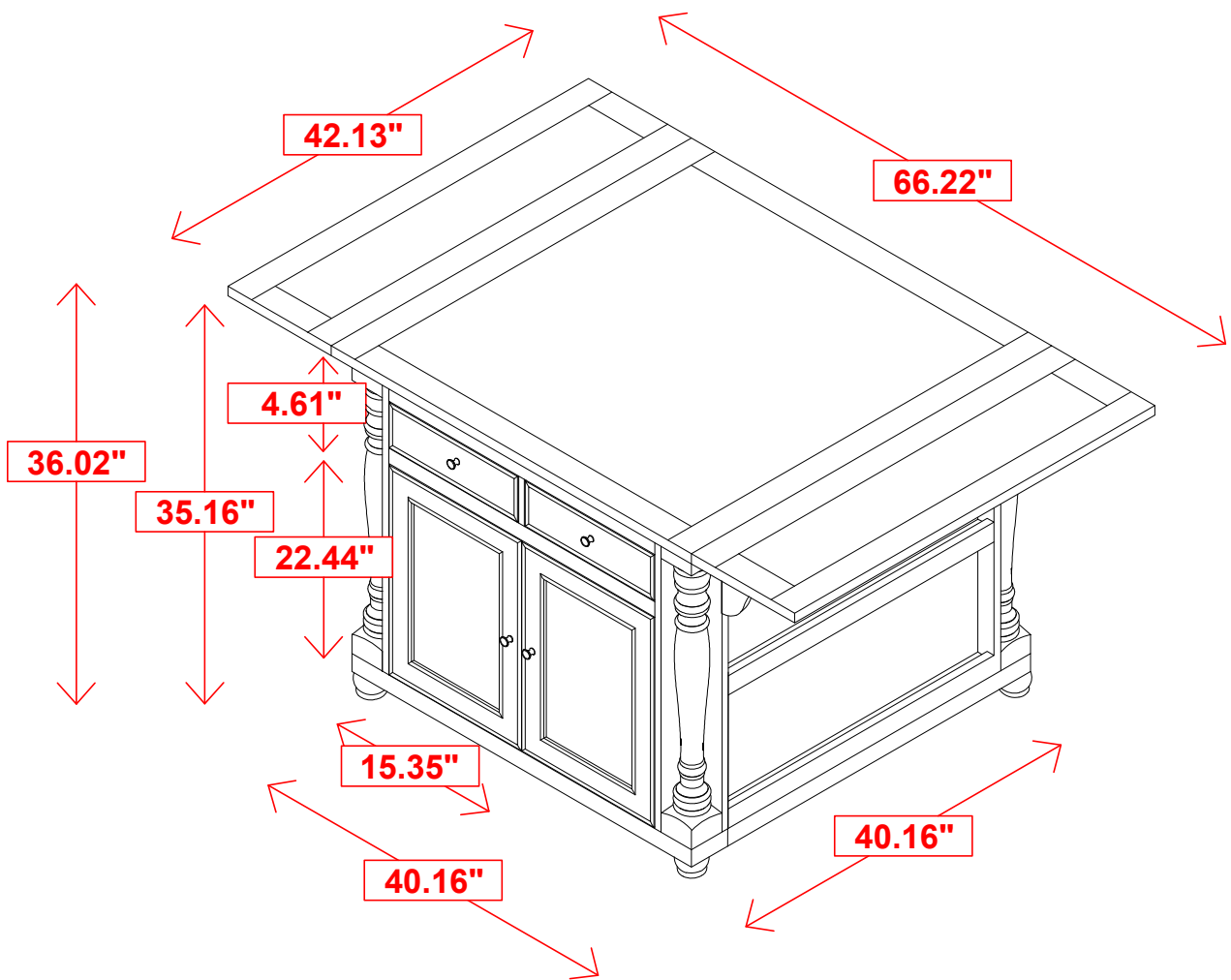
ASSEMBLY INSTRUCTIONS

STEP 6

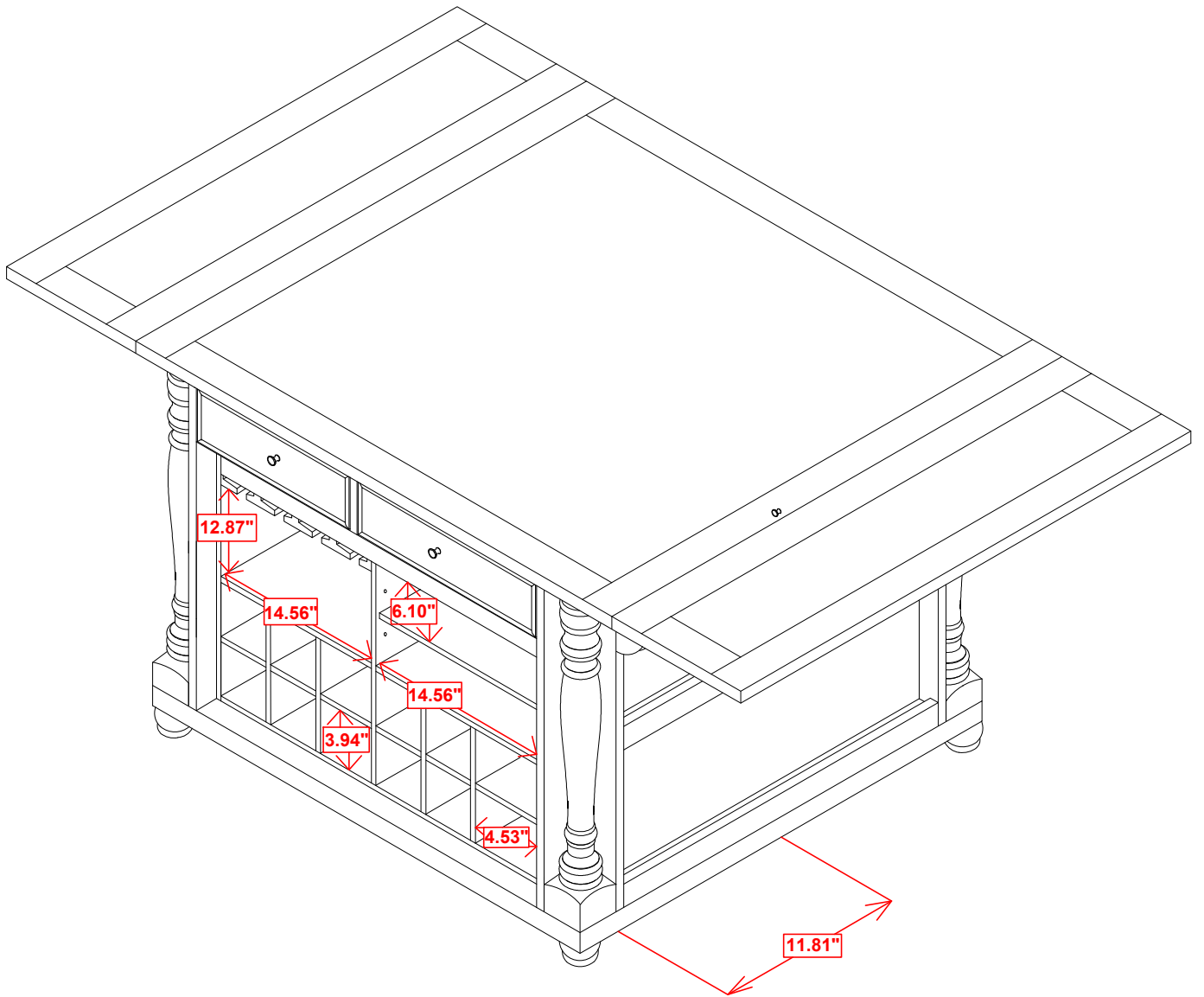
COMPLETE

Open up the kitchen cart top



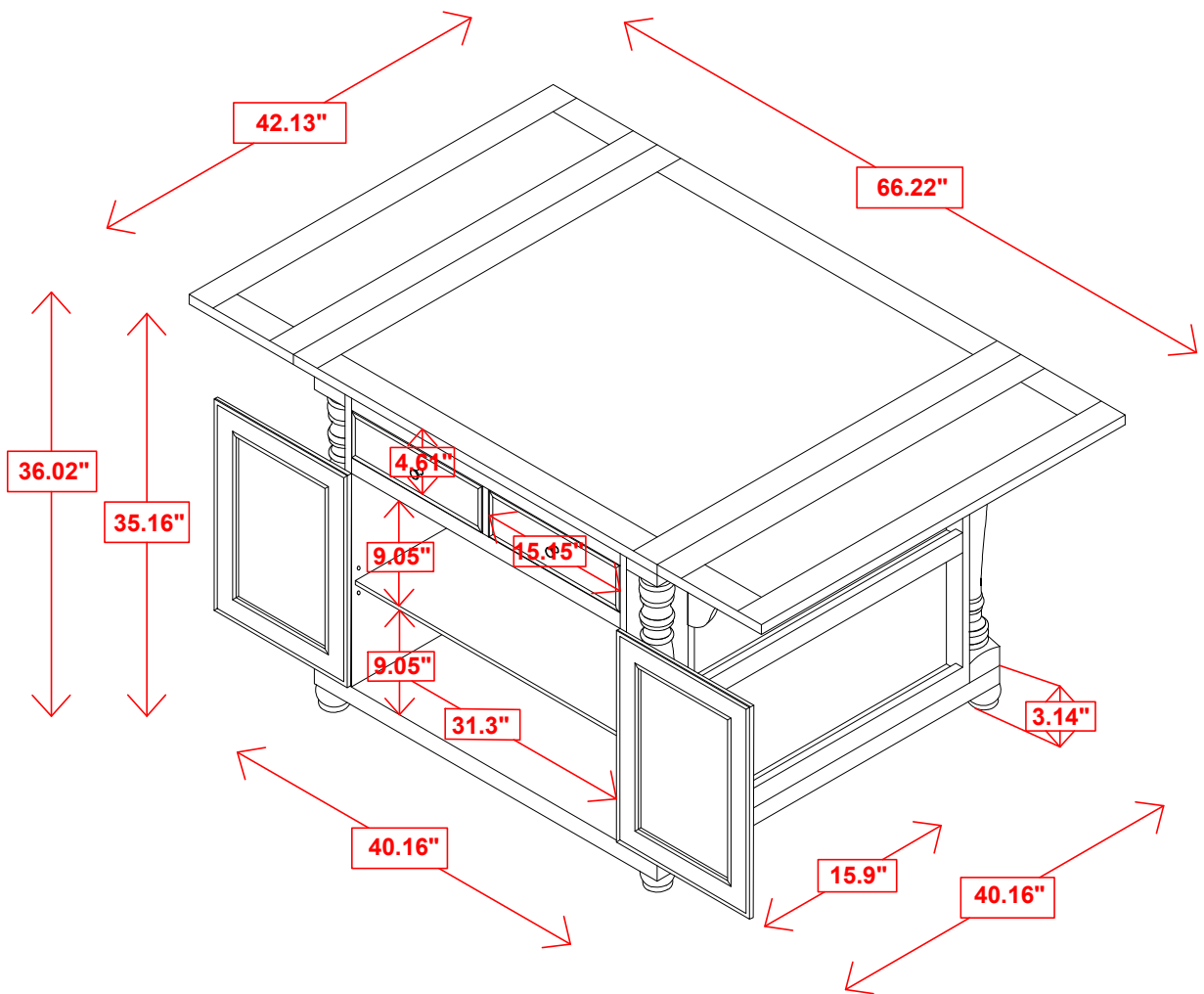


Note: Dimension tolerance $\pm 5\%$



Note: Dimension tolerance $\pm 5\%$

INNER SIZE OF DRAWER 3.15" x 13.39" x 12.4"



Note: Dimension tolerance $\pm 5\%$