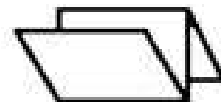


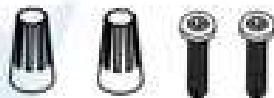
What's in the Box



LED Surface Mount



Installation Instructions



Hardware Set

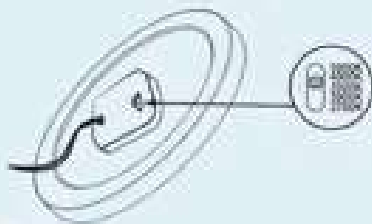


Mounting Plate

- 1 Mount the bracket to the existing J-Box with the 2 mounting screws; if installing a square DSE fixture, the mounting bracket should be aligned to the J-Box to ensure the square is in the desired direction.



- 3 Carefully tuck the wires into the J-Box, align the spring clips on the fixture to the bracket holes and push the fixture flush to the ceiling, snapping the clips into the bracket.



- 2 Make wire connections.



- 4 Select the desired color temperature by sliding the switch on the back of DSEV3.

