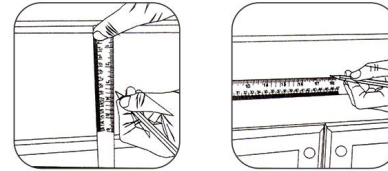
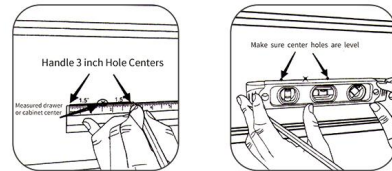


Installing New Cabinet Handles:

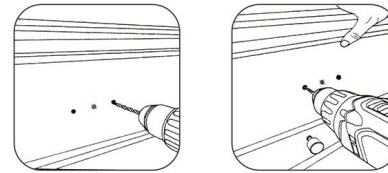
- 1** Determine where you would like to mount your handle by placing it on the cabinet door or drawer. Use a ruler or tape measure to ensure the handle is evenly spaced on the cabinet or drawer. Lightly mark your center location with a pencil.



- 2** Measure two opposing marks that extend half the distance of your handle hole centers. For example, if your handle has a 3-inch hole center, mark two points that are 1.5 inches in either direction. Use a level to ensure that your marked locations are straight.



- 3** Using a drill and a 3/16" drill bit, drill a hole into your cabinet door or drawer at both the left and right marks. Do not drill into the center mark. Once both holes are made, gently erase the middle mark you made in Step 1.



- 4** Align your new handle with the drawer holes. While supporting the handle with one hand, install the handle using the replacement screws included in your pack. Tighten until secured.
- 5** Repeat steps 1-4 for all remaining drawers or cabinet doors.
Note: This pack includes two screw sizes per handle.
Make sure you select the size which best suits your handles and drawers.

