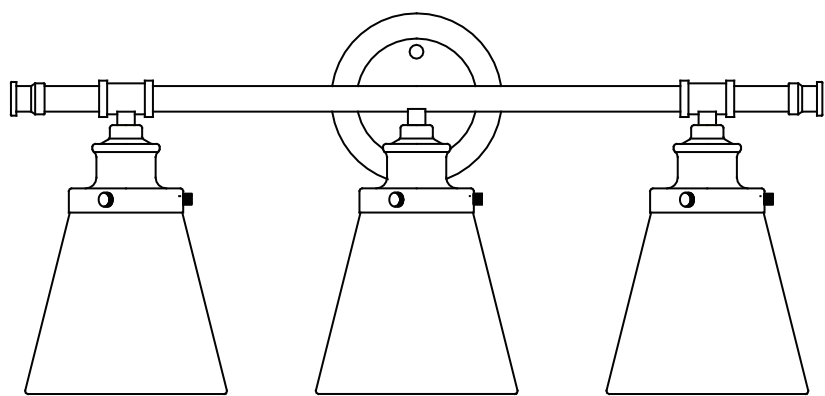


USE AND CARE GUIDE

3-Light Vanity Fixture



Safety Information

Consult a qualified electrician if you have any electrical questions.

CAUTION: Inspect the wire insulation for any cuts, abrasions, or exposed copper that may have resulted during shipping. If there is a defect in the wire, do not attempt installation.

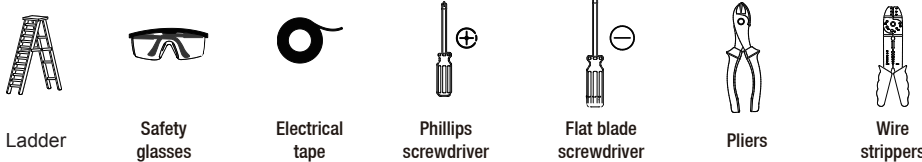
WARNING: Before starting installation of this fixture or removal of a previous fixture, disconnect the power by turning off the circuit breaker or by removing the fuse at the fuse box.

Pre Installation

PLANNING INSTALLATION

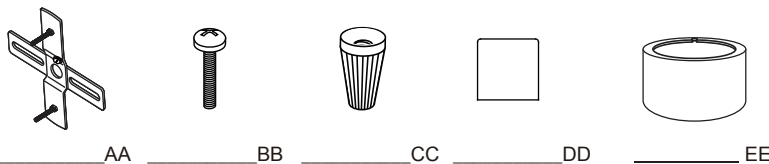
- Read all instructions before installation.
- To avoid damaging this product, assemble it on a soft, non abrasive surface, such as carpet or cardboard.
- Keep your receipt and these instructions for proof of purchase.

TOOLS REQUIRED



HARDWARE INCLUDED

NOTE: Hardware not shown to actual size.

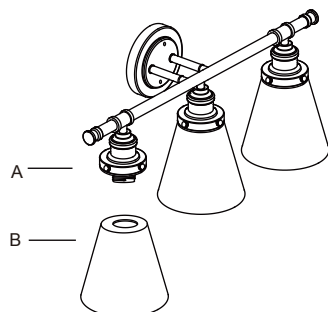


Part	Description	Quantity
AA	Mounting Bracket	1
BB	Outlet Box Screw	2
CC	Wire connector	3
DD	Cap nut	2
EE	Steel ring(pre-installed with light fixture)	3

Pre-installation (continued)

PACKAGE CONTENTS

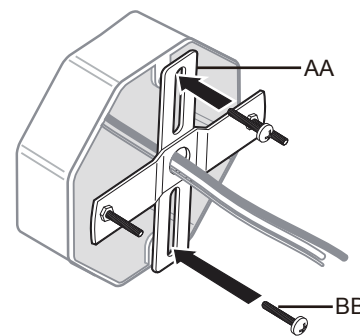
Part	Description	Quantity
A	Fixture	1
B	Glass shade	3



Installation

1 Attaching the mounting bracket to the outlet box.

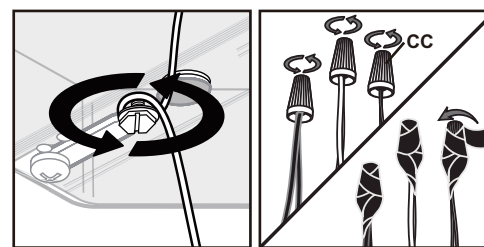
- Place the mounting bracket (AA) over the outlet box(not included) so that the holes on the mounting bracket (AA) align with the screw holes on the outlet box.
- Screw the outlet box screws (BB) through the holes on the mounting bracket (AA) into the screw holes on the outlet box.



2 Making the electrical connections

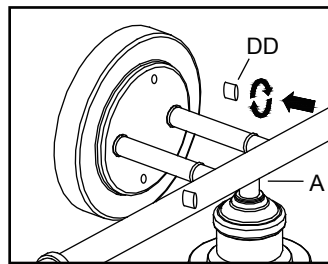
- Connect the copper wire from the light fixture (A) to the mounting unit (AA) by securing it with the pre-installed ground screw.
- Connect the black to black (power), the white to white (neutral) and copper wire to ground wire with the wire nuts (CC) and secure them with electrical tape (not included).

NOTE: If the wires from the fixture are the same color, attach the side with markings or letters to the black (positive) wire and the other to the white (neutral) wire.



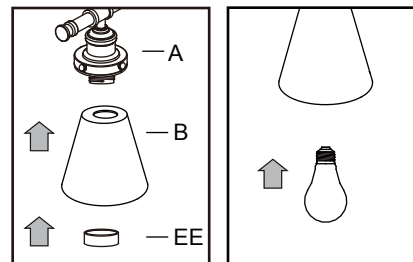
3 Securing the light fixture

- Secure the light fixture (A) to the junction box by placing it over the pre-installed support screws on the mounting unit (AA) and securing it with the cap nuts (DD).



4 Installing the light bulbs

- Remove the pre-installed steel rings (EE) from the light fixture (A), add the glass shades (B) and re-secure the steel rings (EE).
- Install three 100-watt max. medium-base filament bulbs(not included).



Maintenance

- Before attempting to clean the fixture, disconnect the power to the fixture by turning the breaker off or removing the fuse from the fuse box.

Care and Cleaning

- Clean the fixture with a soft, dry cloth.
- Do not use any cleaners with chemicals, solvents, or harsh abrasives.

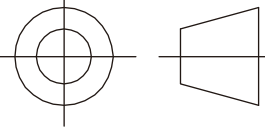
Troubleshooting

Problem	Possible Cause	Solution
The bulb will not light.	The bulb is burned out.	Replace the light bulb.
	The power is off.	Ensure the power supply is On.
	There is a faulty wire connection.	Check the wiring.
	The circuit breaker is off.	Ensure the circuit breaker is in the On position.
The fuse blows or circuit breaker trips when the light is turned on.	There are crossed wires or the power wire is grounding out.	Check the wire connections. Contact a qualified electrician.

正面

反面

说明书尺寸297*210MM-单黑色正反面印刷
70G书纸，中间对折，外框线为刀模线

公差 MM	基本尺寸 MM	 THIRD ANGLE PROJECTION 单 位: mm 材 质: 70G书纸
± 1.0	0~30	
± 1.5	30~80	
± 2.0	80~315	
± 2.5	315~700	
± 3.0	700~1300	
± 4.0	1300~2500	