

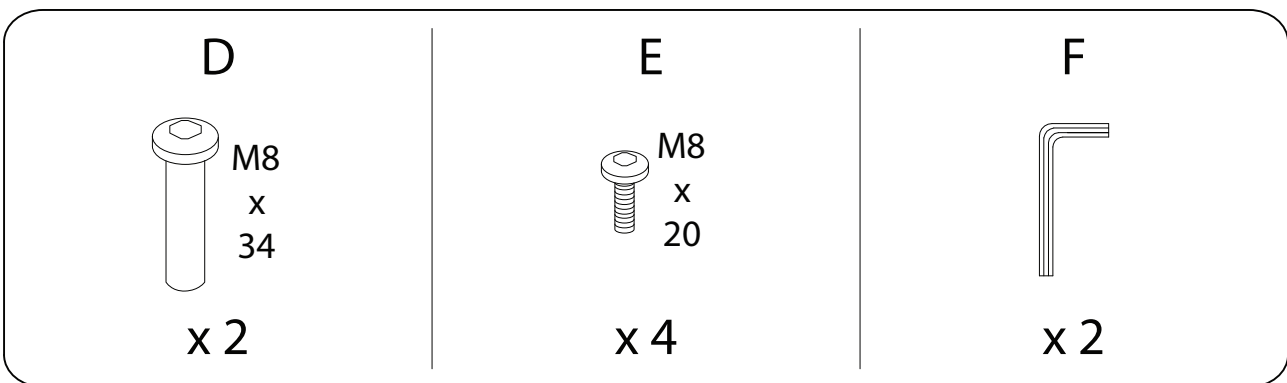
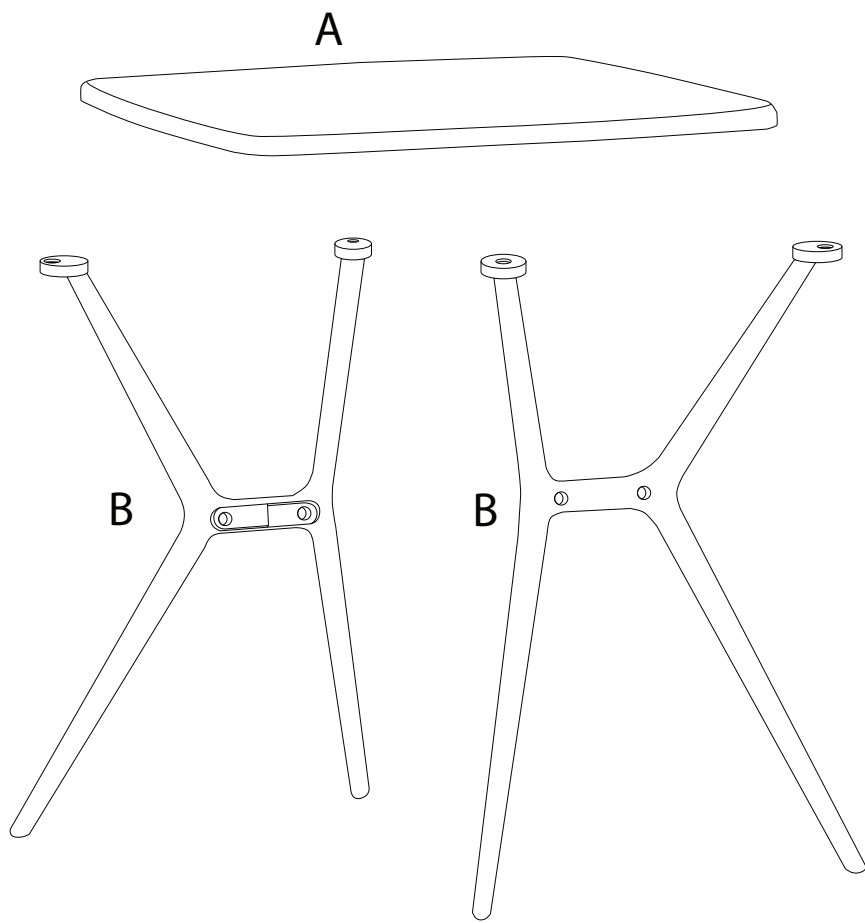
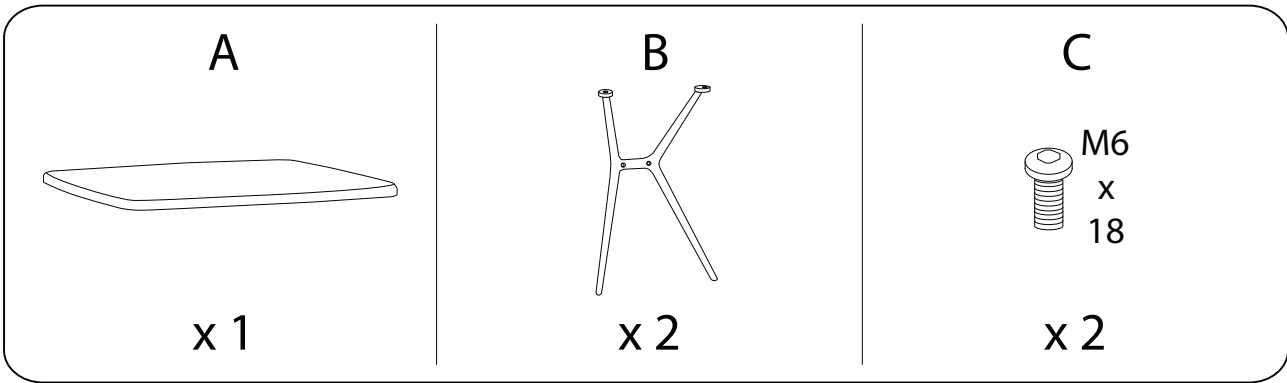


Diagram illustrating assembly steps and safety warnings:

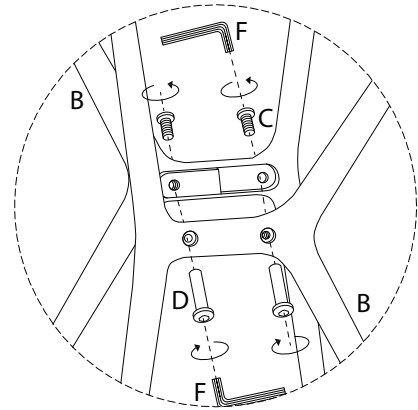
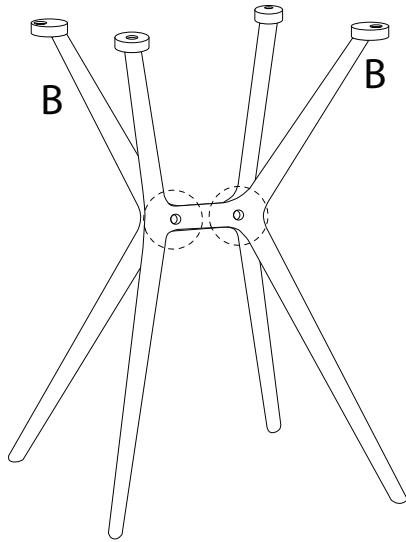
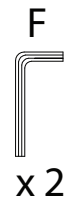
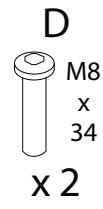
- Step 1:** Shows an L-shaped metal bracket being inserted into a hole in a wooden board. A power drill is shown with a slash through it, indicating that a drill should not be used for this step. A warning triangle with an exclamation mark is positioned to the right.
- Step 2:** Shows a wooden board being placed on a surface. A power drill is shown with a slash through it, indicating that a drill should not be used for this step. A warning triangle with an exclamation mark is positioned to the right.

Timing and personnel requirements:

- A clock icon indicates a duration of **10'** (10 minutes).
- A person icon indicates that **1** person is required.



1



2

