

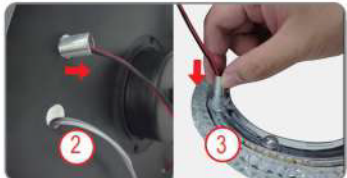
PART I. ASSEMBLE THE LAMP



01
1. Loosen the screws. Remove the ① fixture mounting bracket from the ② canopy.



02
2. Separate the nuts and the hollow screws.



03
3. Thread the hollow screw through the hole on the ② canopy, and secure it on the ③ lamp part by screwing. (Each lamp part requires 2 screws. For Model No. JMY9005 and JMY9007, you will need to use spare hollow screws from the accessory kit.)



04
NOTE: If it's difficult to screw, please disconnect the wiring and replace the hollow screw with a new one from the accessory kit.



05
4. Align the hollow screws with the hole on the ② canopy and insert the screws.

- 3 -

PART II. ASSEMBLE THE FAN



06
5. Tighten the nut with a wrench. (Repeat steps 2-5 for each lamp part.)



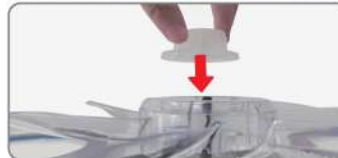
07
6. Install the ④ rear fan guard. Make sure the ③ lamp part is between the ② canopy and the ④ rear fan guard. (This step is not applicable to Model No. JMY9006)



08
7. Secure the ④ rear fan guard with three truss head screws. (This step is not applicable to Model No. JMY9006)



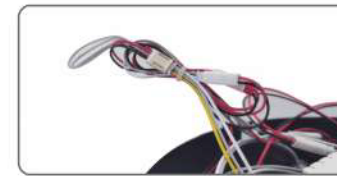
09
8. Install the fan blade. Make sure the bottom groove and projecting parts are aligned.



10
9. Install the fan blade fixing nut and tighten it by turning counter-clockwise.

- 4 -

PART III. INSTALL TO THE CEILING



10
10. Use the cable ties to bundle the messy wires.



11
11. Shut off power (recommend turning the power off at the breaker panel). Install the ① fixture mounting bracket to the ceiling.



12
12. Use the S hook to hang the light and free your hands for next step.



13
13. Make sure power is off. Insert the exposed ends of the wires into a wire connector cap. Twist the cap to join the wires together.



14
14. Align the opening on the ② canopy to the screws on the ① fixture mounting bracket. Rotate the ② canopy so that it's fixed by the screws. Tighten all the four screws. Installation is completed.

- 5 -