

# *ASSEMBLY INSTRUCTIONS*



## ***Vanity Mirror & Desk***

---

# ASSEMBLY INSTRUCTIONS

## ASSEMBLY TIPS:

1. Remove hardware from box and sort by size.
2. Please check to see that all hardware and parts are present prior to start of assembly.
3. Please follow attached instructions in the same sequence as numbered to assure fast & easy assembly.



### WARNING!

1. Don't attempt to repair or modify parts that are broken or defective. Please contact the store immediately.
2. This product is for home use only and not intended for commercial establishments.



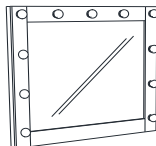
ASSEMBLY TIME

10 MINUTES

## PARTS IDENTIFICATION

### B1 ( BOX 1 )

A MIRROR



1PC

C ADAPTOR



1PC

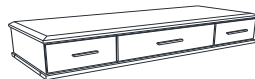
B MIRROR  
SUPPORT



2PCS

### B2 ( BOX 2 )

D DESKTOP



1PC

F COMPARTMENT



2PCS

E BACK PANEL



1PC

## HARDWARE IDENTIFICATION

### Z-B1 (BOX 1) - HARDWARE PACK IS LOCATED IN (B1)

LONG FLAT HEAD  
1 SCREW  
(M4 x 32mm - RBW)



8PCS

### Z-B2 (BOX 2) - HARDWARE PACK IS LOCATED IN (B2)

2 ALLEN WRENCH  
(M4 x 60MM - BLK)



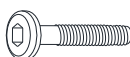
1PC

3 SHORT FLAT  
HEAD SCREW  
(M4 x 25mm - RBW)



11PCS

4 BOLT  
(M6 x 30mm - BLK)



2PCS

5 LOCK WASHER  
(1/4" - BLK)



2PCS

6 FLAT WASHER  
(1/4" X 19mm - BLK)



2PCS

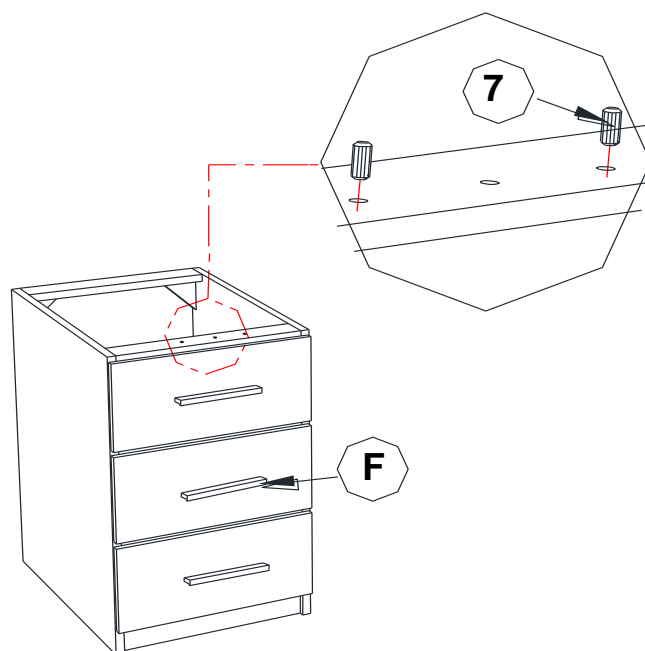
7 WOOD DOWEL  
(M6 x 20mm)



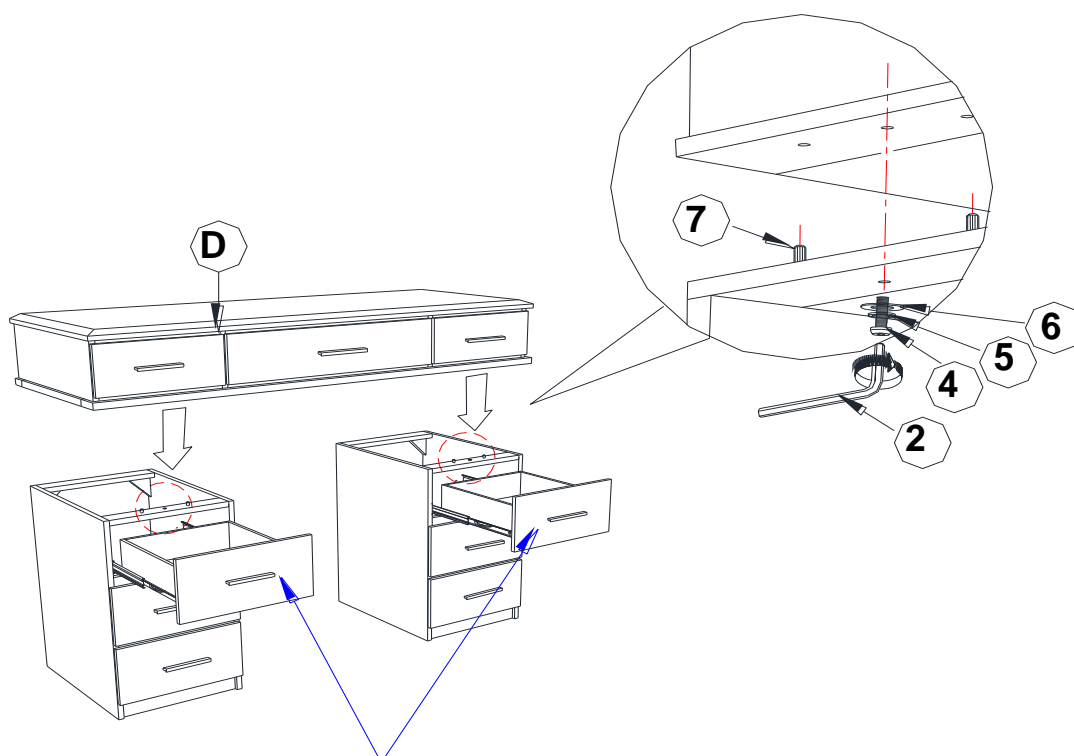
4PCS

# ASSEMBLY INSTRUCTIONS

## STEP 1



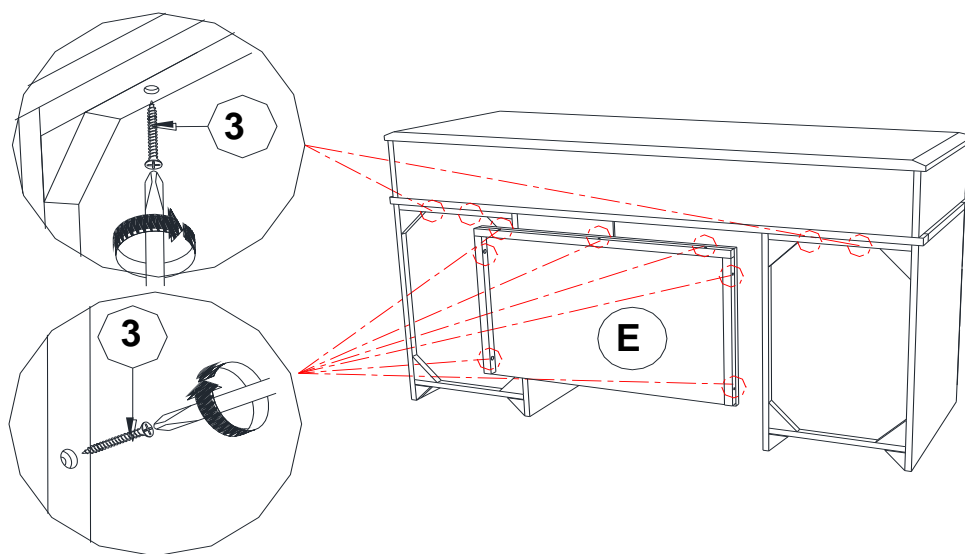
## STEP 2



**REMARK : Pull out drawer for easy assembly process**

## ASSEMBLY INSTRUCTIONS

### STEP 3

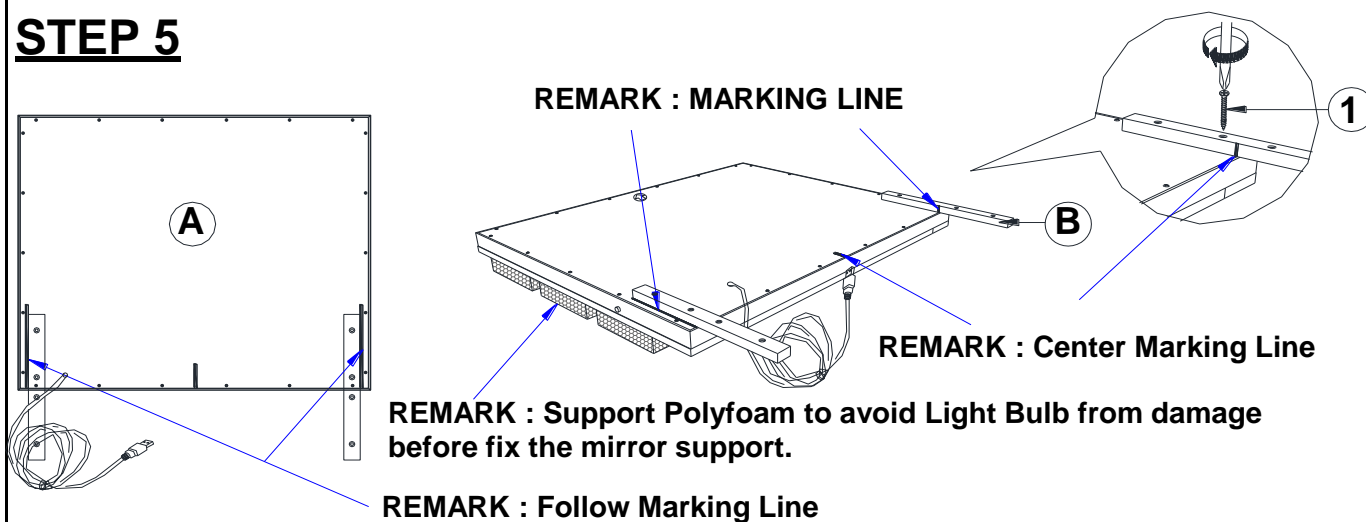


### STEP 4 COMPLETE

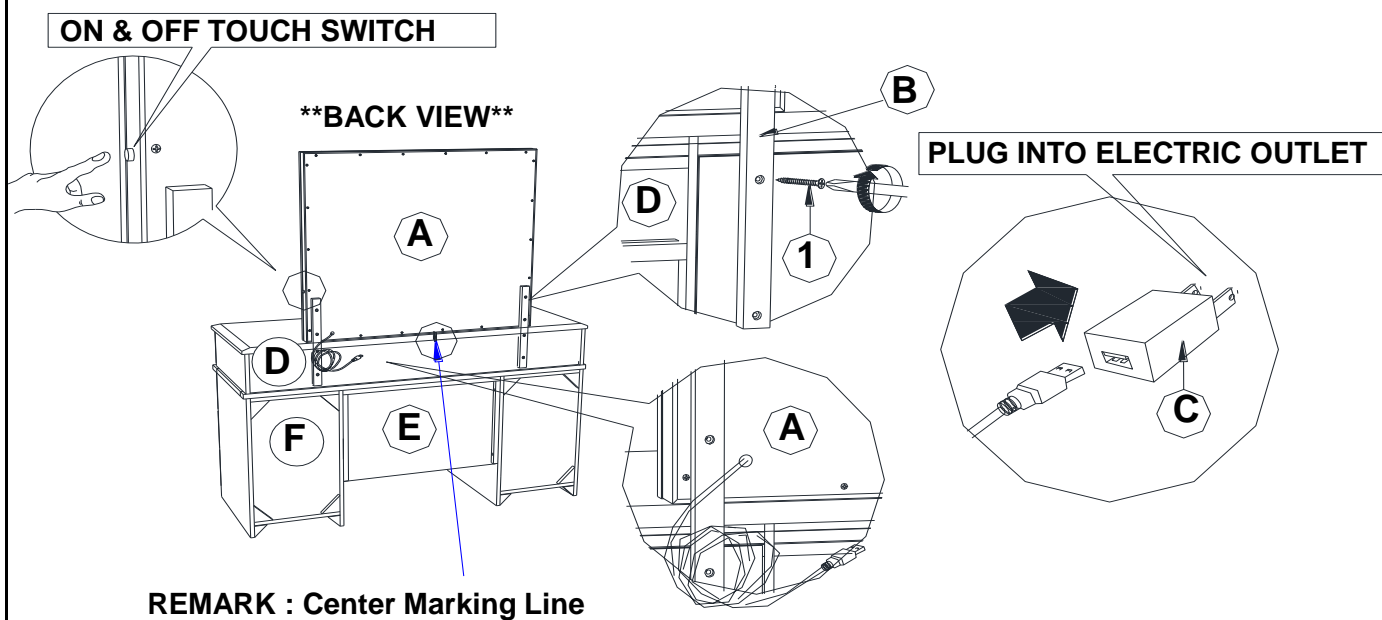


## ASSEMBLY INSTRUCTIONS

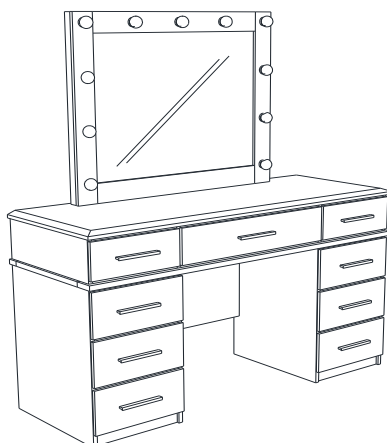
### STEP 5



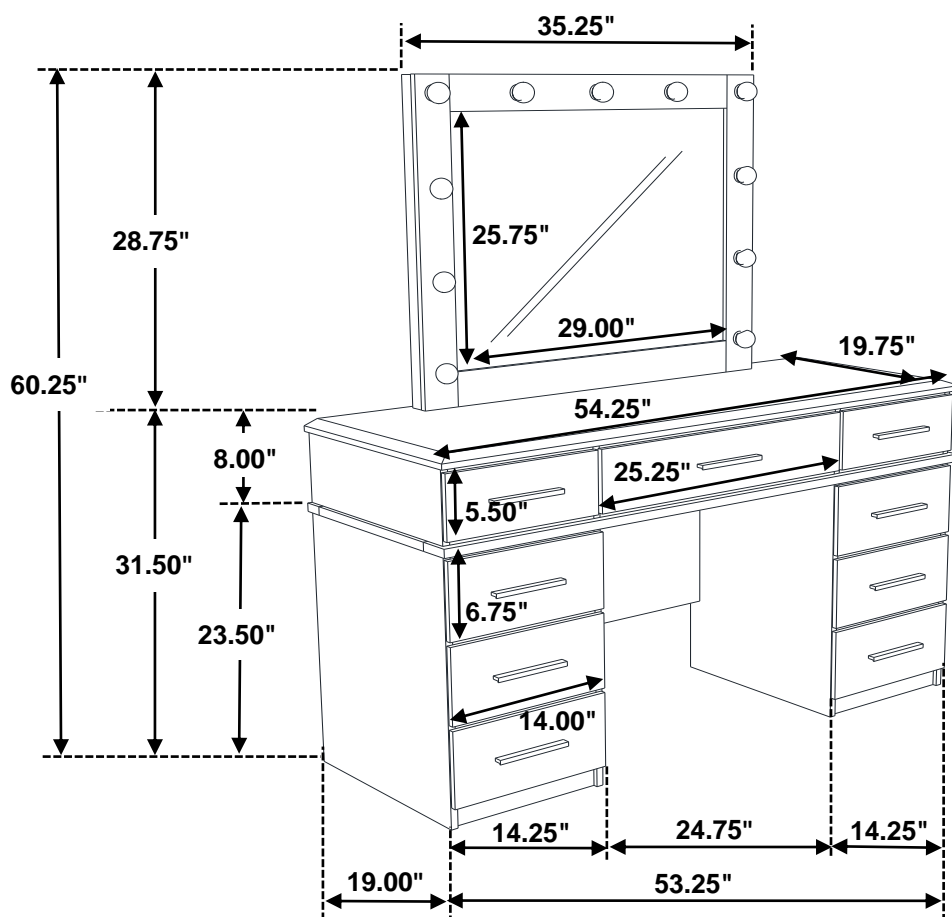
### STEP 6



### STEP 7 COMPLETE



Inner Size of Drawer (Top Center) : 23.25"W X 12.50"D X 3.00"H X 0.25"T  
Inner Size of Drawer (Others) : 12.50"W X 11.25"D X 3.00"H X 0.25"T



**Note :** Dimension tolerance  $\pm 5\%$