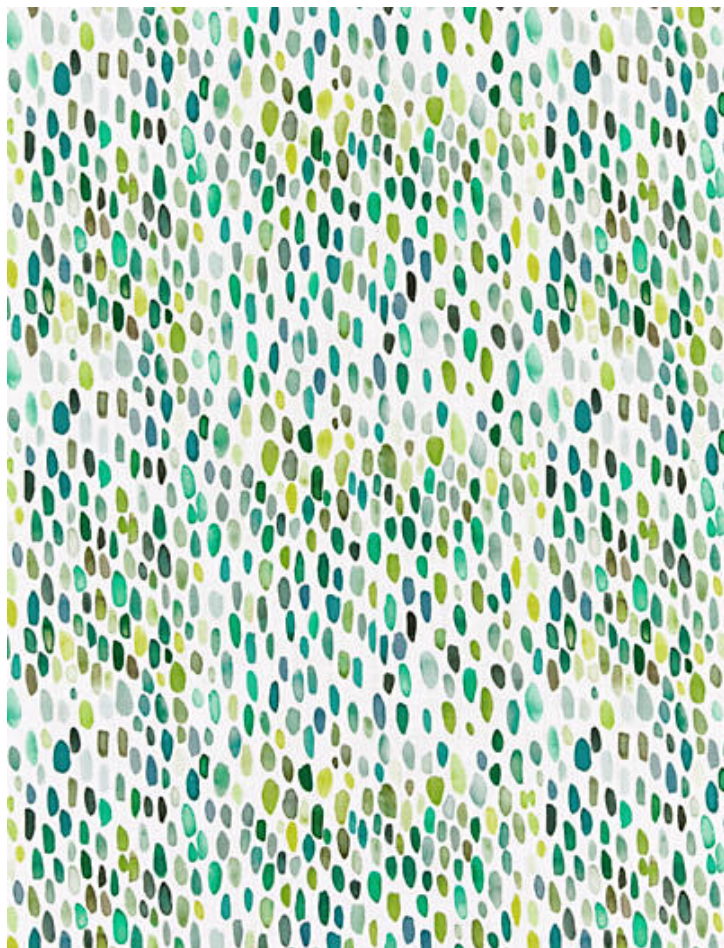


JAMBOREE LINEN PRINT

GRASSHOPPER • LO 0006 5096

Printed Fabrics from the Jamboree Collection by Grey Watkins



APPROX. MATERIAL 58" / 147.32 cm
WIDTH
APPROX. REPEAT . . . HORIZONTAL 19.25" / 48.90 cm
VERTICAL 13" / 33.02 cm
MATCH STRAIGHT
CONTENT 100% LINEN
SUGGESTED USE . . . MEDIUM DUTY MULTIPURPOSE
ABRASION 18,000 MARTINDALE
CLEANABILITY DRY CLEAN ONLY
MADE IN AUSTRIA
STOCKED IN SCALAMANDRE WAREHOUSE
DESIGN ABSTRACT
DOTS / CIRCLES
GRAPHIC
SCALE MEDIUM

DESIGN INSPIRATION

A best-selling pattern that is transitional and joyful, Jamboree features multicolored, hand painted brush strokes and a painterly aesthetic on top of a 100% linen ground. Also offered in a coordinating wallpaper.



DETAIL IMAGE