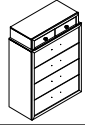



# ASSEMBLY INSTRUCTION






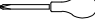
DESCRIPTION: CHEST

Thank you for purchasing this quality product. Be sure to check all packing material carefully for small parts that may have come loose inside the carton during shipment.

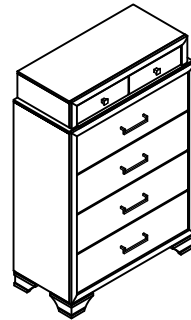
**PART LIST :**

ITEM	DRAWING	DESCRIPTION	QTY
A		CHEST	1
B		LEG	4

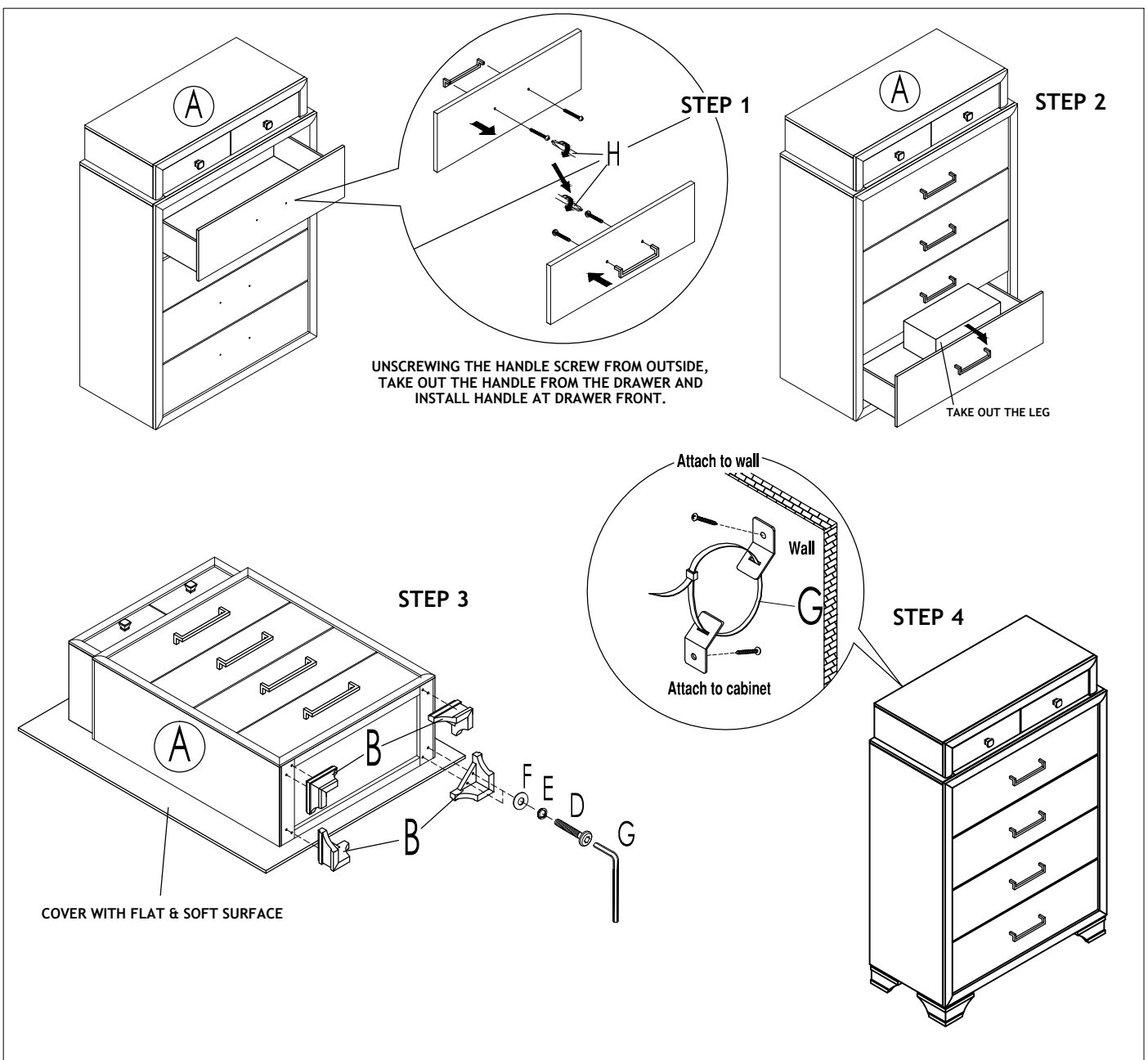
**HARDWARE LIST :**

ITEM	DRAWING	DESCRIPTION	QTY
C		JCBC SCREW ( M6 x 35mm )	8
D		SPRING WASHER ( M8 )	8
E		FLAT WASHER ( M8 x 18mm )	8
F		ALLEN KEY ( M4 x 65mm )	1
G		TIPPING RESTRAINT	1
H		SCREW DRIVER(*)	1

(\*) The manufacturer does not provide ITEM H



**COMPLETED CHEST**



**NOTE :** MUST TIGHTEN SCREWS PERIODICALLY. WITH USE SCREW MAY BECOME LOOSE. CHECK TIGHTNESS OF ALL SCREWS EVERY 6-8 WEEKS.

**CLEANING INSTRUCTION :**  
AFTER ASSEMBLE, CLEAN & POLISH THE COMPLETED PARTS IF NECESSARY WITH SOFT CLOTH AND INDUSTRIAL RECOGNIZED FURNITURE POLISH.