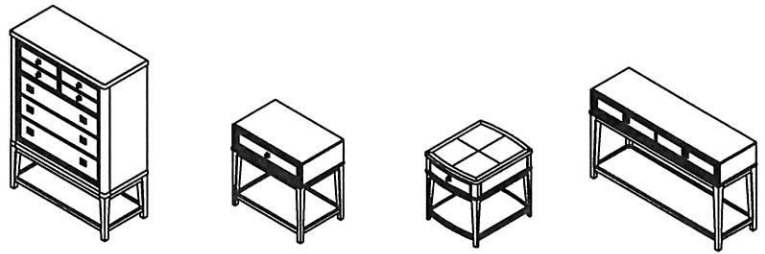


ASSEMBLY INSTRUCTIONS



TOOLS REQUIRED:

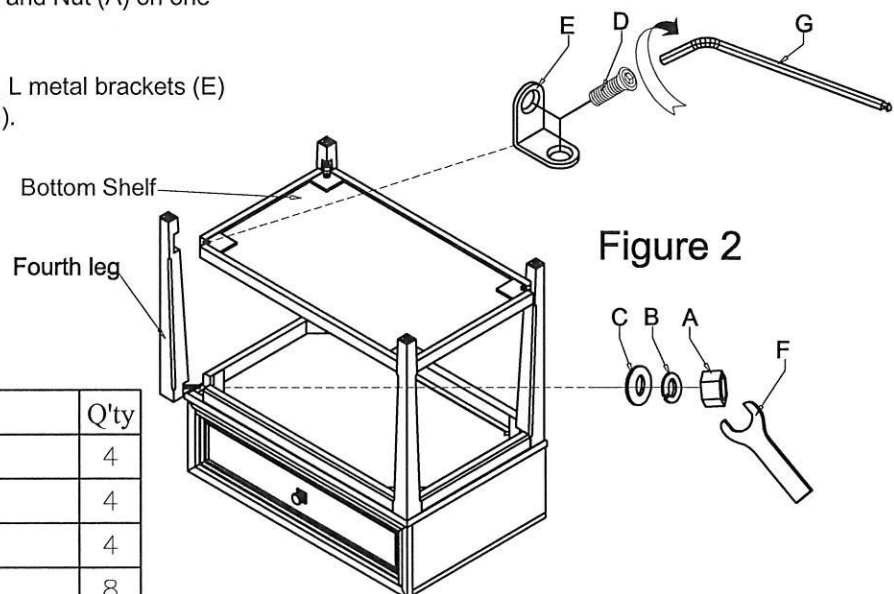
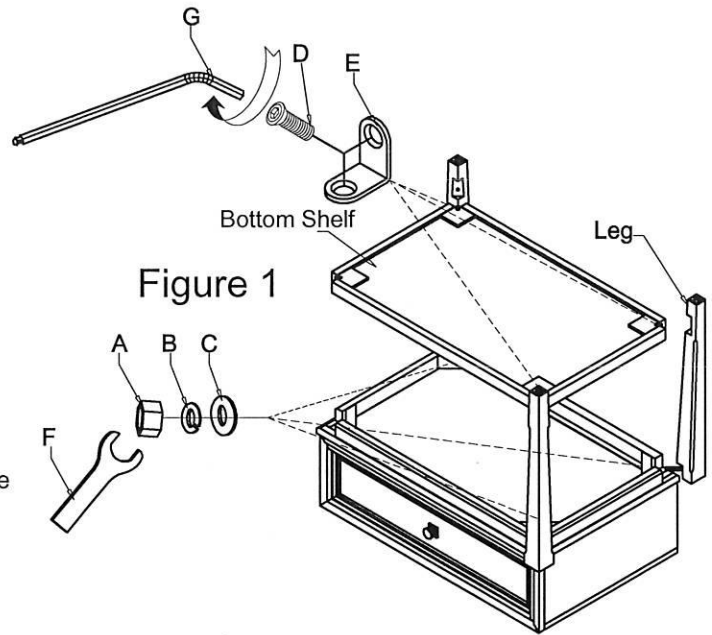
Spanner wrench (supplied, part # F)
Allen key (supplied, part # G)


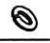





BEFORE YOU START:

1. Check the parts against the parts list to make sure all items are present.
2. Assemble your furniture on a soft, flat surface to avoid scratching the finish.
3. **CAUTION:** Do not over tighten screws, nuts or bolts during assembly.
4. Your furniture may require occasional tightening.

INSTRUCTIONS:

1. Turn the table top upside down on a clean soft surface .
2. Attach each leg by using Flat washer (C), Lock washer (B) and Nut (A) on one bolt per leg. Repeat for two other legs. Tighten all the bolts, using Spanner Wrench (F). (See Figure 1)
3. Align corners of Bottom Shelf with the cut-outs of the three assembled legs. Put the fourth leg to the front of Top as shown in Figure 2. Make sure the cut-out in bottom leg align with corners of bottom shelf. Secure the fourth leg by using Flat washer (C), Lock washer (B) and Nut (A) on one bolt per leg.
4. Attach Bottom Shelf, using Bolts (D), L metal brackets (E)
Tighten all the bolts with Allen Key(G).
(See Figure 1 & 2).



No.	Hardware List		Q'ty
A		Hex nut Ø5/16"	4
B		Lock washer Ø5/16"	4
C		Flat washer Ø5/16"	4
D		Bolt Ø1/4"x5/8"	8
E		L Metal Bracket	4
F		Spanner Wrench 12mm	1
G		Allen wrench 4mm	1

Thank you for purchasing furniture