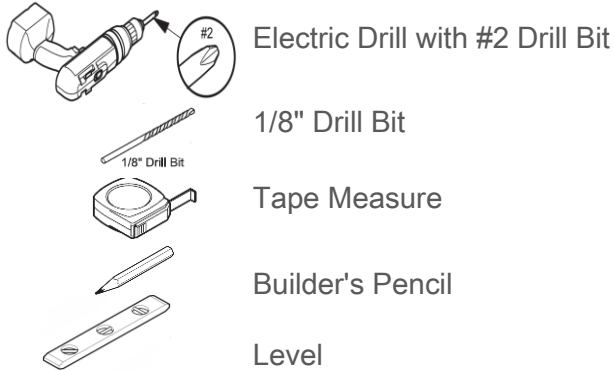
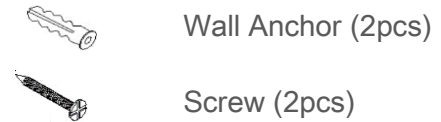


# MIRROR INSTALLATION GUIDE

## Tools for Assembly (Not Included)

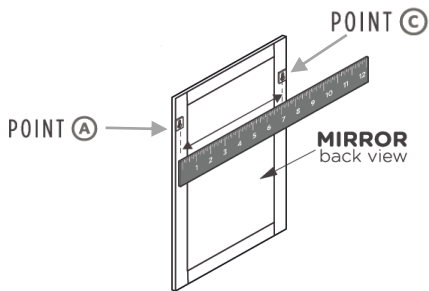


## Supplies (Included in Package)



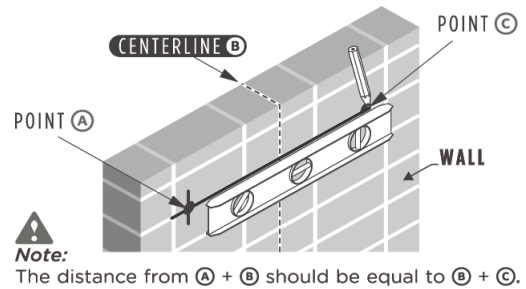
1

Flip the mirror over and measure the distance between point **A** and point **C**.



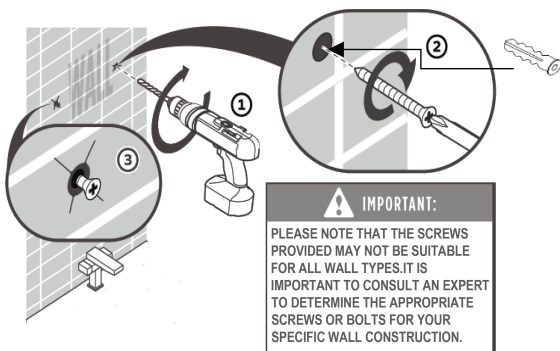
2

Use a level to mark the measured distance between Point **A** and Point **C** on the wall.



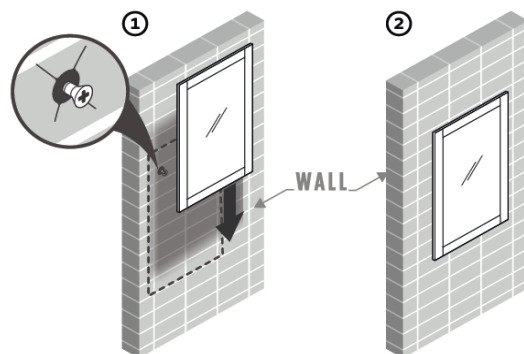
3

Drill 2 holes at the marked positions and insert wall anchors and screws.



4

Hang the mirror on the wall.



Thank you for choosing. Your safety is our top priority, and we hope these instructions help you use our products safely and effectively.