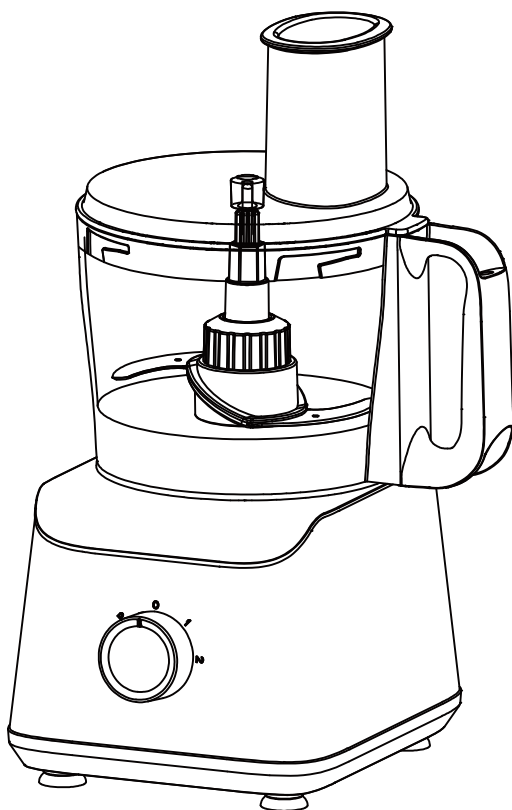


OWNER'S GUIDE

PANTI

Food Processor E01

AC120V 60Hz 600W



PLEASE READ CAREFULLY AND REVIEW INSTRUCTION FOR OPERATION AND USE BEFORE USE
HOME USE ONLY



Safety Instructions

Before use, be sure to read all of the following instructions to avoid injury or damage and to get the best results from the appliance. Be sure to keep this manual in a safe place. If you give or transfer this device to someone else, be sure to include this manual as well.

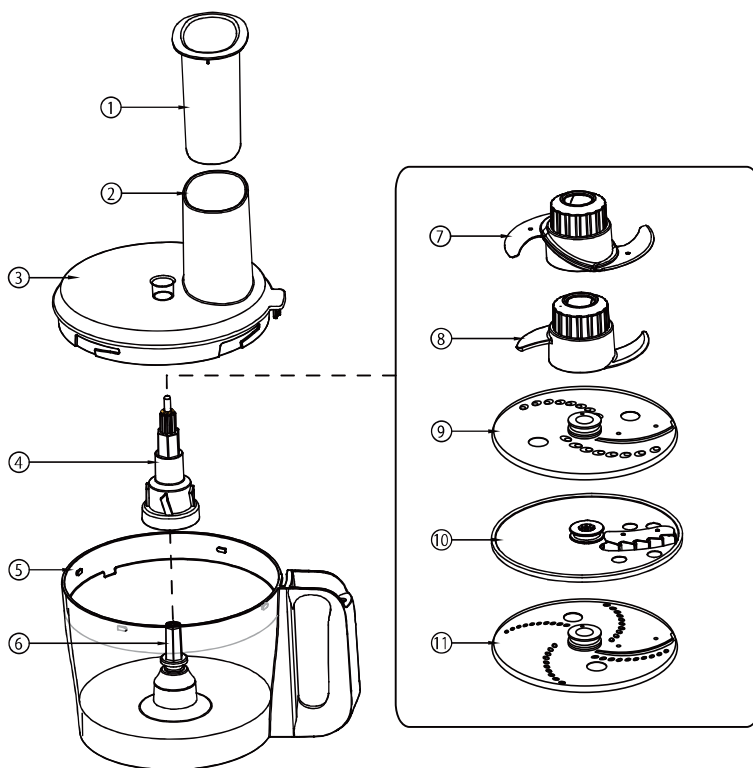
Warranty is void if damage is caused by failure to follow the instructions in this manual. The manufacturer/importer is not responsible for damage caused by failure to follow the instructions in this manual, negligent use, or use not in accordance with the requirements of this manual.

1. Please read this manual before use and keep it for future reference.
2. The power supply you use during operation must be consistent with the rated voltage and frequency indicated on the nameplate.
3. Only use a matching power socket.
4. To protect the relevant electrical appliances in the product from danger, please do not immerse the body of the product or the power cord, plug, etc. in any liquid or get them wet. See the cleaning section for details.
5. This product is designed for home use and cannot be used outdoors. The manufacturer does not assume any responsibility for damage caused by failure to follow the instructions.
6. If the product fails or is damaged in other ways, please do not use this product again. Please send the product to an authorized service department for repair with special tools.
7. For safety reasons, check the power cord regularly to ensure that there is no obvious damage. If the power cord is damaged, it must be replaced by professionals from the manufacturer, its maintenance department or similar departments to avoid danger.
8. If the appliance falls into water, do not touch it. Remove the plug from the socket, turn off the appliance and send it to an authorized service center for repair.
9. Never try to open the appliance casing or repair the appliance yourself, as this may cause electric shock.
10. Children cannot recognize the dangers associated with improper use of electrical appliances, so children should never use household appliances unattended.
11. Do not place food above 60°C in a cooking cup or juice cup container
12. Do not use hot water above 60°C for washing or fire to dry this product.
13. Do not press the safety pin and safety lever with any tool, stick, etc., as the product may start, which may cause personal injury.
14. Before each use, make sure that the power cord is not damaged.
15. Do not leave the appliance unattended during use.
16. Do not allow the power cord to cross the edge of a table or counter, or come into contact with hot surfaces. Do not pull the power cord during working hours. After stopping the machine, let the product cool completely before winding the power cord. The product cannot be stored or covered before it cools completely.
17. To avoid fire or electric shock, do not use accessories that are not configured by the factory.
18. When no one is using it, when replacing or installing accessories, disconnect the machine from the power supply and unplug it before adding food and cleaning.
19. The blades are very sharp, so be careful when using or cleaning.
20. Before operating the device, make sure the lid is securely locked.
21. During operation, do not put your fingers or other objects into the feeding port. If food is blocked in the feeding port, use the food pusher to push the food down. If this method is not feasible, close the appliance and disassemble it to remove the remaining food.
22. Avoid contact with moving parts when the machine is running.
23. When the machine is running, do not push the food with your hands, always use the push barrel.

-
24. When processing food, keep your hands and utensils away from the moving blade or knife disc to reduce the risk of serious injury to people or damage to the utensils. You can use a scraper or spatula, but it must be used only when the utensils are not running.
 25. To avoid overheating of the motor, please do not use the machine for too long continuously. It cannot run continuously for 30 seconds without load. After working for 5 consecutive cycles, you can continue to work after cooling down. The cooling time takes about 30 minutes.
 26. Be sure to turn off the appliance after each use, and make sure that the motor is completely stopped before disassembly.
 27. Before cleaning, the accessories must be removed.
 28. People with physical, sensory, and mental impairments (including children) or people who lack experience and knowledge should not use this product alone; unless there is a special person to supervise or instruct the use of the product and be responsible for their safety.
 29. For families with children or disabled people, parents or family members must supervise them, and children are strictly prohibited from approaching the power cord or the blender and its accessories. It should be placed out of reach of children to prevent them from pulling the power cord and knocking over the appliance, which may cause injury.
 30. Children should be supervised and not allowed to play with this appliance.
 31. Children are prohibited from using it without supervision.
 32. Disconnect the power connection of the machine when no one is using it and before disassembly, assembly, and cleaning.
 33. Turn off the power switch and disconnect the power before changing accessories or touching moving parts.
 34. Be careful when removing the cutting blade for cleaning.

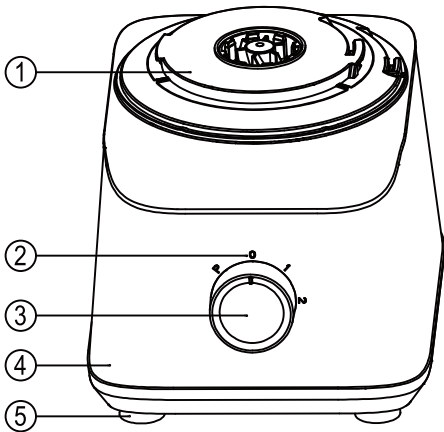
Parts Description

-Food Processor



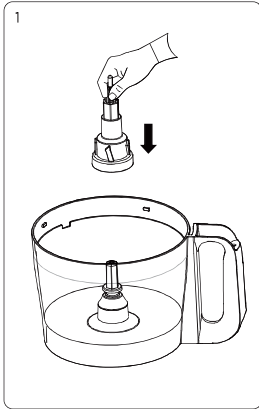
- | | |
|-----------------------|---|
| 1. Pusher | 9. Reversible S.S slicing/shredding disc (Coarse) |
| 2. Feeding port | 10. S.S. french fries disc |
| 3. Lid | 11. Reversible S.S slicing/shredding disc (Fine) |
| 4. Long Shaft | |
| 5. 2.5L bowl | |
| 6. Short Shaft | |
| 7. S.S chopping blade | |
| 8. Kneading blade | |

-Main Body

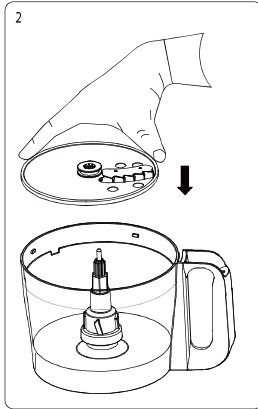


- 1. Top cover
- 2. Speed:
P=Pulse
0=OFF
- ①=Low speed
- ②=High speed
- 3.Knob
- 4.Stainless steel housing
- 5.Anti-slip feet

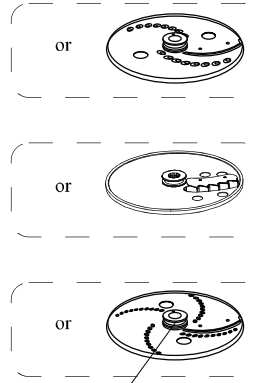
Disc holder +Reversible S.S slicing/shredding disc(Coarse) , S.S. french fries disc,Reversible S.S slicing/shredding disc(Fine)



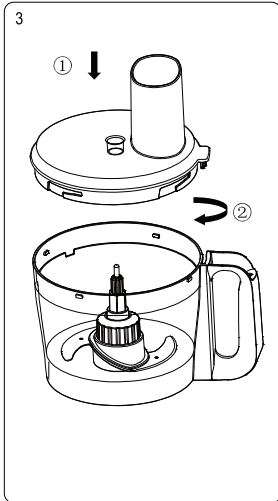
Hold the long shaft and place it into the big bowl.



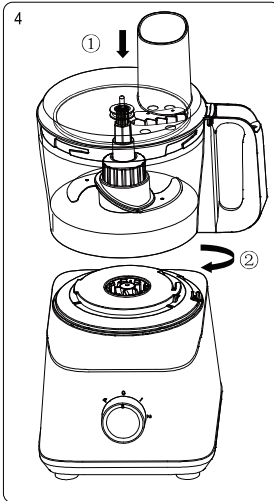
Put the blade holder with s.s disc into the bowl.



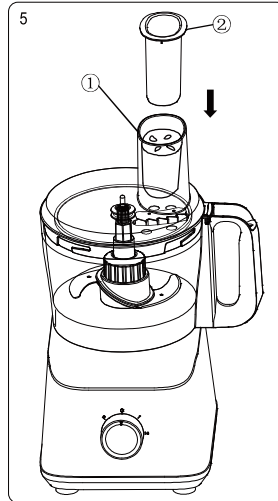
S.S slicing/shredding disc, for slicing on the front and for shredding on the back. Plastic part in the middle can be handled



Put the cover on the cup and turn it clockwise until it clicks.



Place the bowl assembly on the upper cover and rotate it clockwise until a "click" sound is heard and the safety switch is

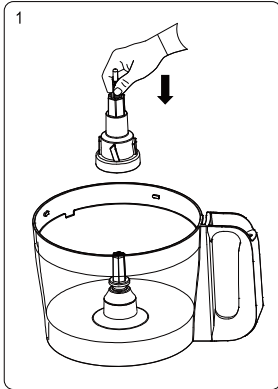


Put food into the feed port and push it down with the pusher

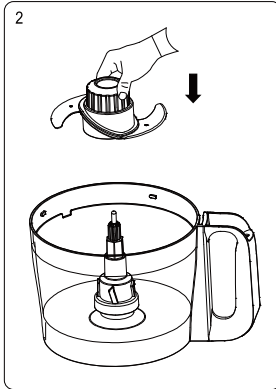
NOTE:

After inserting, make sure the shaft protrudes from the top of the blade holder.
When the machine is running, do not push the food by hand, always use the pusher.

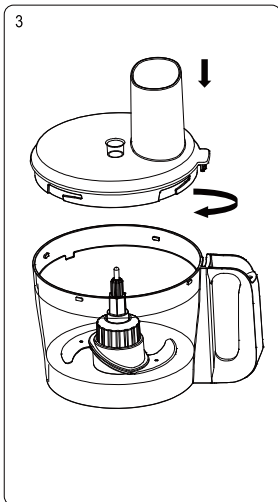
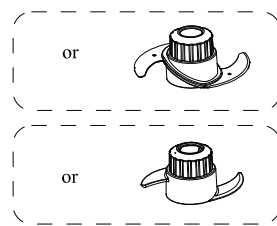
Stainless steel chopping blade, Kneading blade



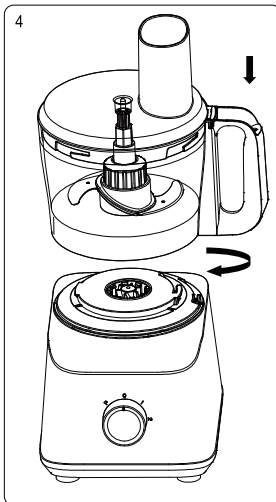
Hold the long shaft and place it into the big bowl.



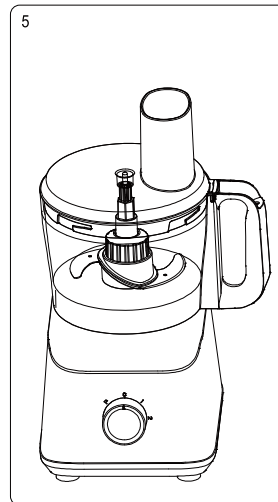
Put the chopping blade or kneading blade into the bowl. Add the ingredients to be processed.



Put the cover on the cup and turn it clockwise until it clicks. Take it out in the opposite direction.



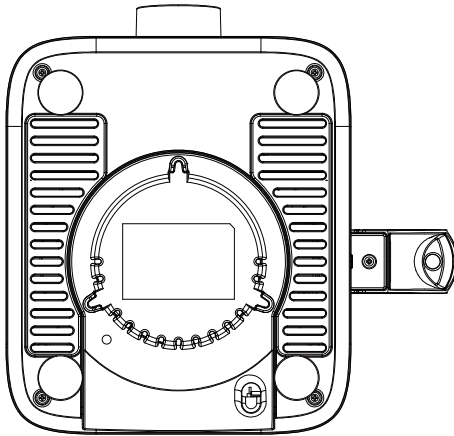
Place the bowl assembly on the upper cover and rotate it clockwise until a "click" sound is heard; Take it out in the opposite direction;



NOTE:

The blade is very sharp and should be used with care when cleaning.

Winding operation guide



Wrap the power cord around the base area and leave the plug next to the base.

Before first use

- Remove and remove all packaging materials.

Food Processor Instructions

Before first use, carefully unpack the food processor and its accessories and remove any packaging materials or labels or stickers.

Clean the appliance as described in the "Cleaning and Maintenance" section.

The blades are sharp, be extra careful.

The appliance can be used to cut meat or vegetables and fruits, knead dough, blend, chop, slice and mince vegetables or potatoes, mix smooth soups, sauces, cream, puree, milk, etc., using different accessories for different tasks.

- Check the power cord for damage.
- Make sure the power supply used is consistent with the logo of the food processor.
- Put the food in the mixing cup. (Do not exceed the maximum capacity scale indicated on the cup)

Food processor bowl

Function	Ingredients	Speeds	Max. Capacity	Operation time (approx.)
Slicing	Cucumber	Low	600g	
	Carrot	Low	600g	
	Potato	Low	600g	
Shredding	Cucumber	Low	600g	
	Carrot	Low	600g	
	Potato	Low	600g	
French fries	Potato	Low	600g	
Chopping	Meat	Low	400g	30S
Kneading	300g flour + 170g water (add water slowly in the first 20 seconds of mixing)	speed 1	470g	1 minute

Precautions and cleaning

- . Before cleaning, the power must be turned off and the power plug must be unplugged
- . To take special care of children and frail elderly people, when taking food, it is necessary to disinfect with disinfectant according to the manufacturer's requirements, and always keep the hand blender thoroughly disinfected.
- . Some foods such as eggs and carrots can cause plastic to discolor. At this time, wiping with a cloth with cooking oil can help eliminate discoloration.
- . Removing accessories
- . Do not touch the blades.
- . Warning: The blades are extremely sharp, so be very careful when cleaning!
- . Note: Do not use a dishwasher to clean the main unit.
- . Do not immerse in water or other liquids. Do not wipe with thinners, benzene, metal wire brushes, or polishing powder.

Warning

- . All repairs and maintenance work must be performed by authorized institutions.
- . After 5 consecutive cycles of use, there must be an interval of at least 30 minutes before continuing to use.



