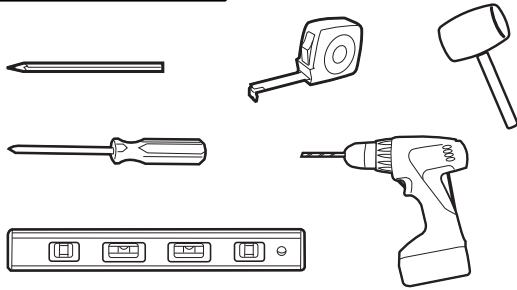
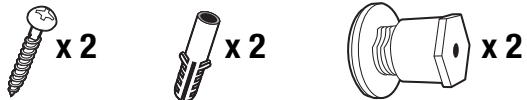


LED MIRROR INSTALLATION MANUAL

Tools Required

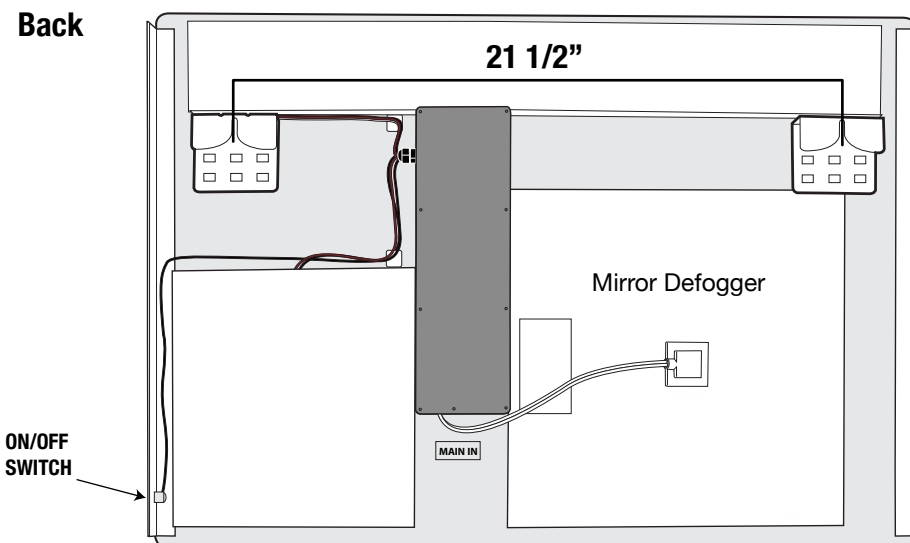
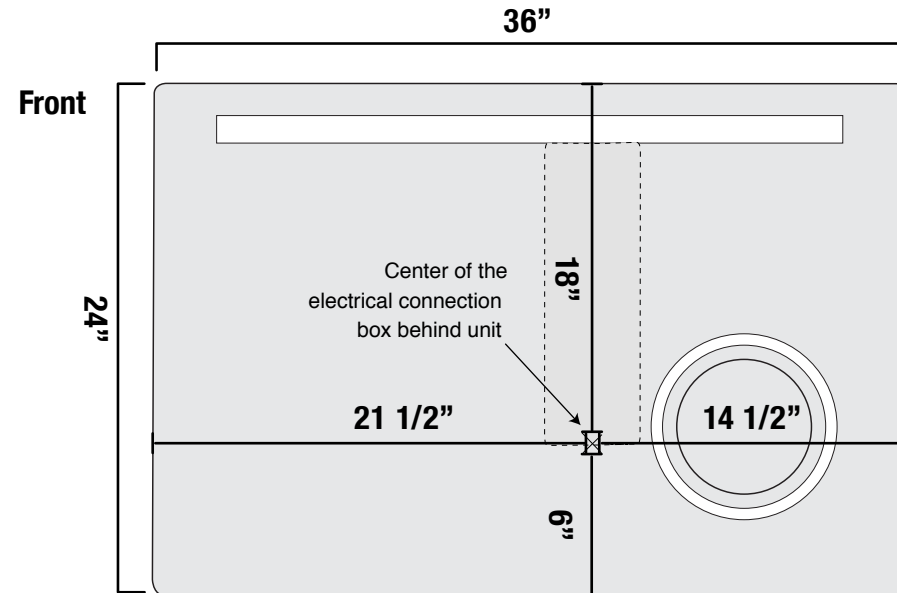


Supplied Hardware



Screws Anchor Black, adjustable
standoffs with adhesive
(optional)

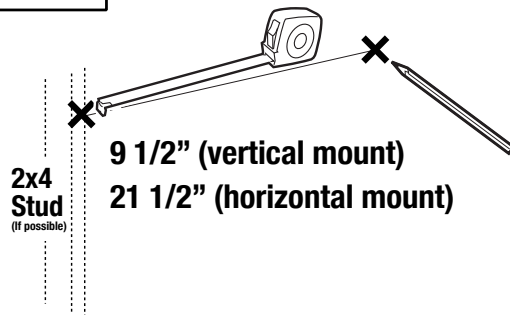
Product improvements are continual.
Measurements may vary.
Please verify all dimensions prior to installation.



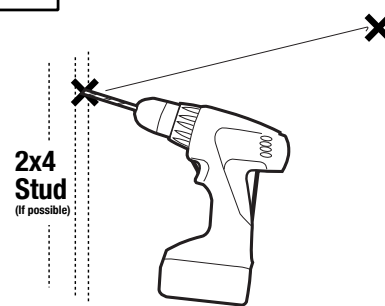
LED MIRROR INSTALLATION MANUAL

Mounting Instructions

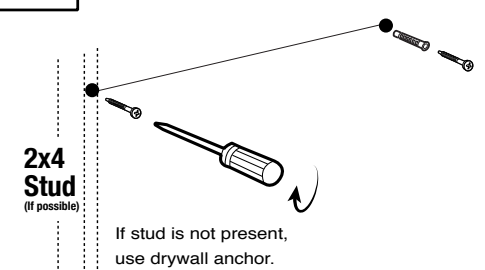
Step 1



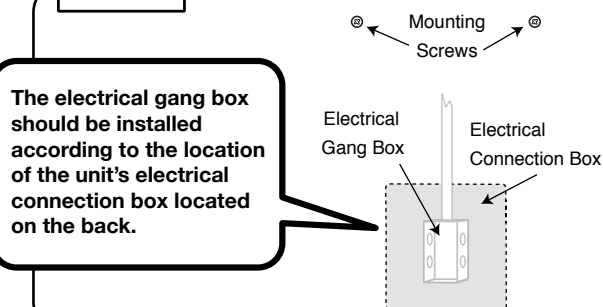
Step 2



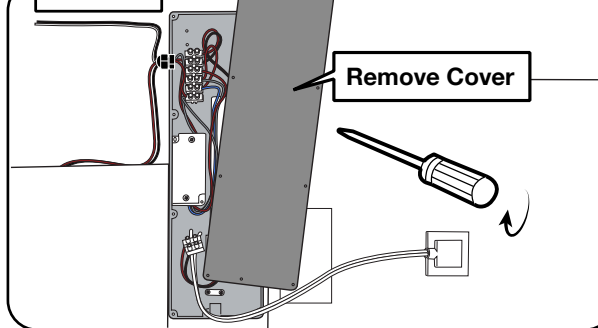
Step 3



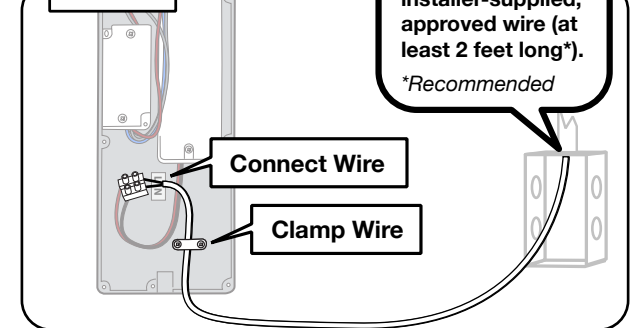
Step 4



Step 5

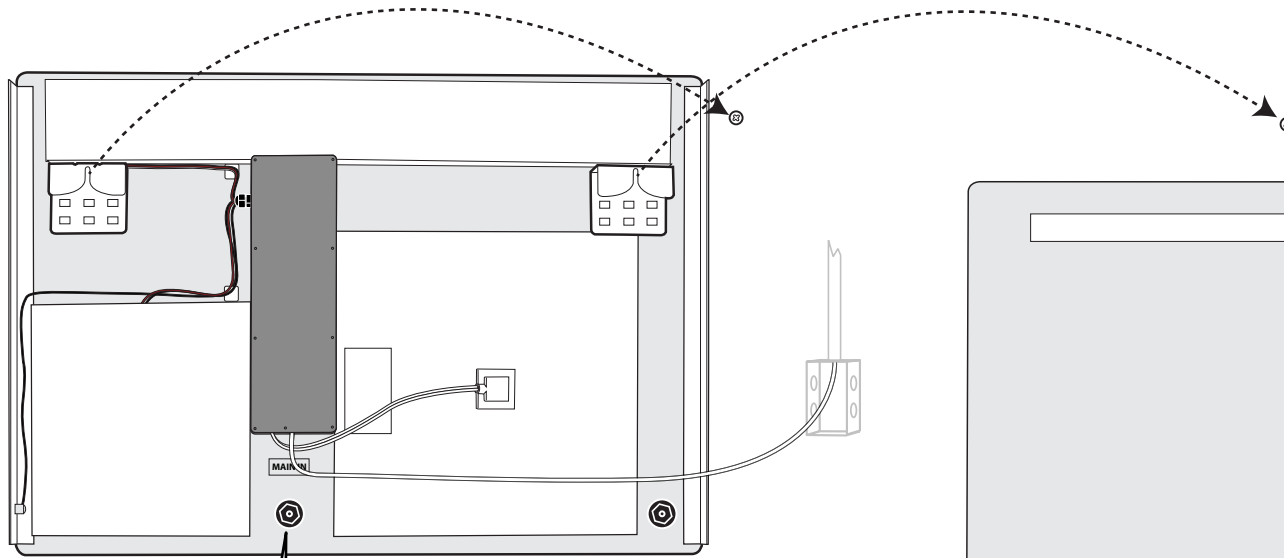


Step 6

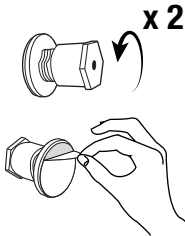


LED MIRROR INSTALLATION MANUAL

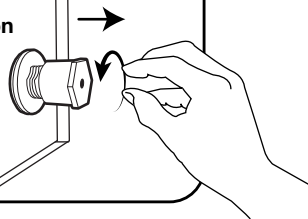
Horizontal Mounting Instructions



Step 7 (optional)



This is an optional way to adjust the plumb of the mirror in relation to the wall it's mounted on.



Using the Side-Mounted Touch Control

Controlling the LED lighting is accomplished by touching the side-mounted on/off button.

To turn this LED lighting on or off, simply give the on/off button a quick touch.

When this lighting first comes on, the color temperature of the lighting will be a cool white (6,500K).

To cycle the color temperature to a warmer 3,000K, simply hold the touch on/off button for a few seconds until the light completes its color transition.

