

PARLOS®

Installation Guide

BEFORE INSTALLATION

- To insure proper installation, please read the following instructions carefully.
- Please make sure that the water supply has been shut off at the stop valve.
- Parlos® reserves the right to update product without notice.

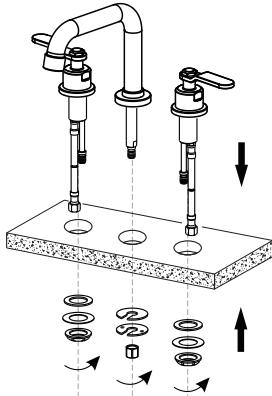
If you have any question or need help, please visit **PARLOS®** website <http://www.parlos.com>



1. Place the Spout in center hole of sink.
Secure it with washers and lock nut.

Note: If sink is uneven, use silicone under the gasket.

2. Attach each handle with a washer and a threaded ring.
Ensure the handles are in the OFF position.
Align the handles as shown.



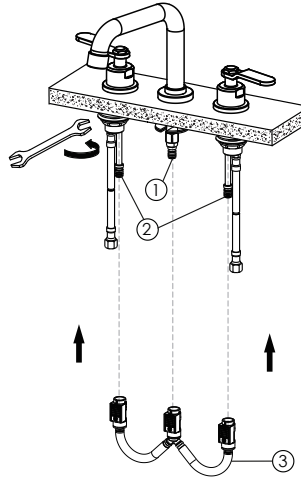
Installation Requirements

Max deck thickness:
1.57 Inches

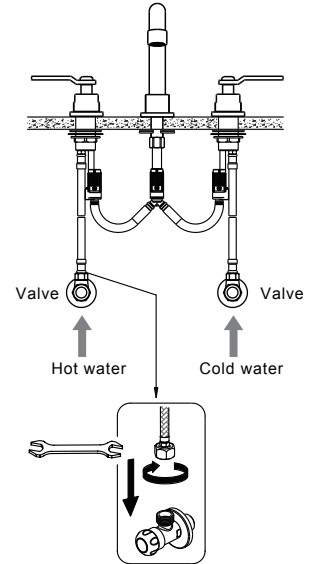


3. Align spout tube ①, outlet tubes ② on quick connect hose ③.
Push quick connect hose ③ firmly upward and snap onto tubes ① & ②.

Pull down moderately to ensure each connection has been made.



4. Connect To Water Supplies.
5. Turn on the water supplies.
Check all connections for leaks.

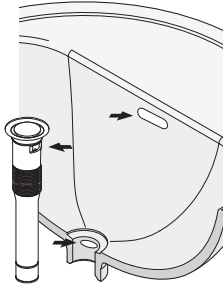


- Every once in a while, please rinse the faucet with luke warm soapwater, and wipe it clean with a soft duster cloth. Please avoid any abrasive cleaners, steel wools, or corrosive chemicals.

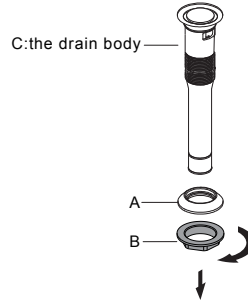


NOTES:

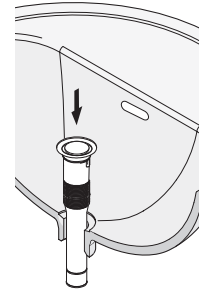
- Fits for sink WITH overflow hole.
- Clean the sink hole, make sure to remove debris.
- Please avoid using plumber's putty. The seal on top is leak-free. Plumber's putty might cause damage.
- Silicone and plumbing tape can be used for sealing requirement.



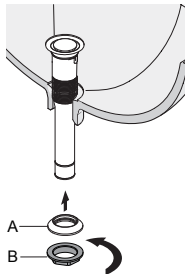
1. Unscrew components A & B to the seal.



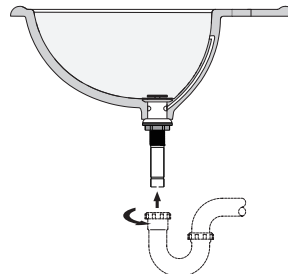
2. Slide the drain body C through the hole in the sink.



3. Screw components A & B back on as shown.



4. Connect the rear end of the drain to the Drain Pipe.



5. Push to activate.

