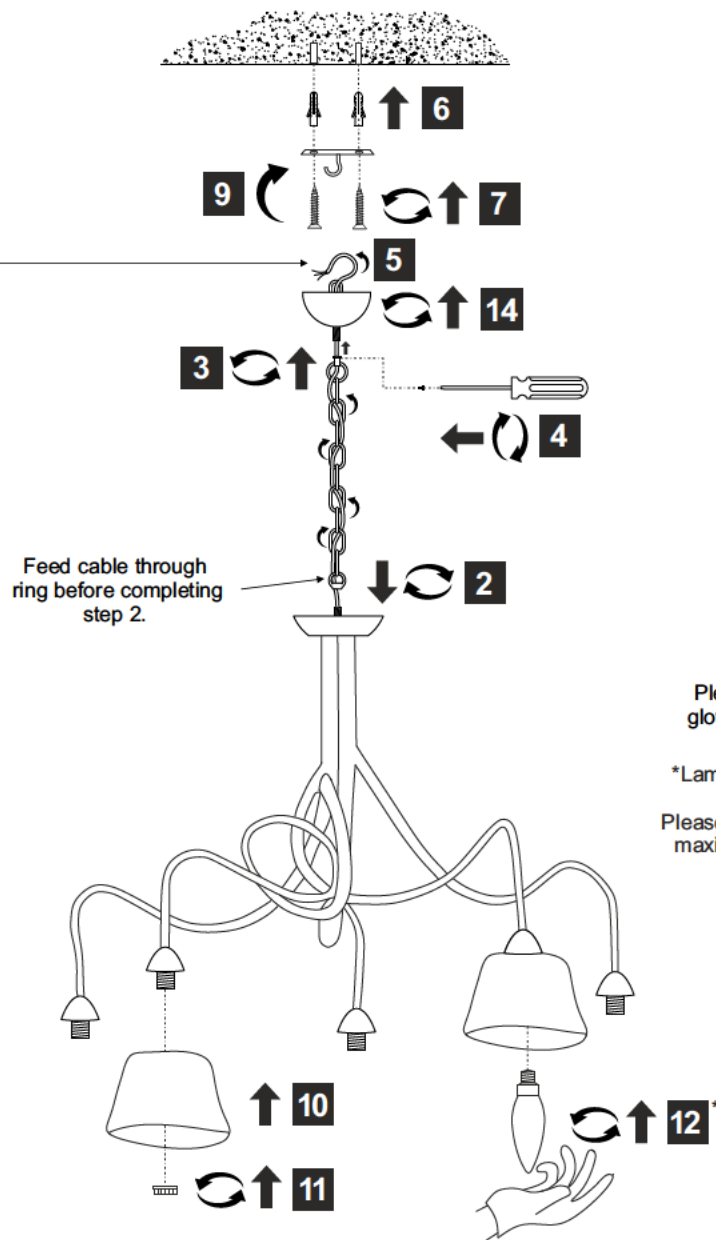
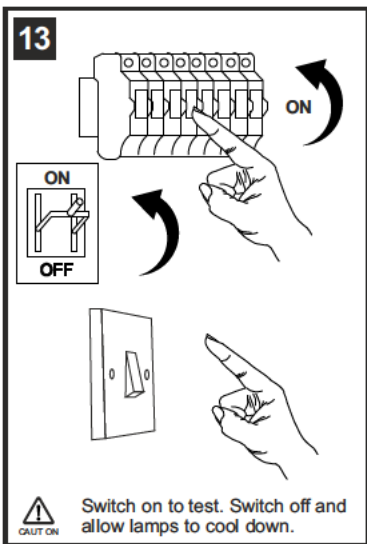
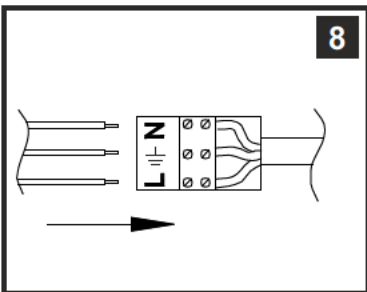
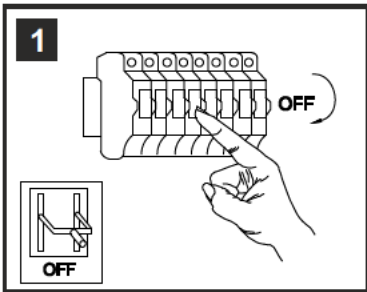


INSTALLATION INSTRUCTIONS

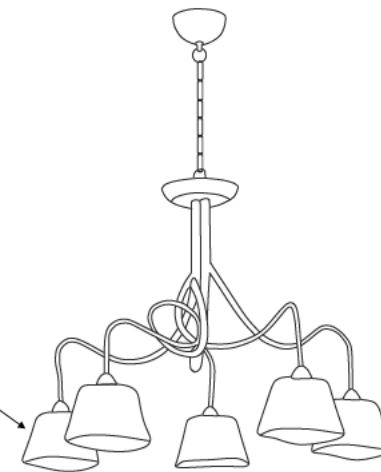
(ILLUSTRATIONS ARE FOR GUIDANCE PURPOSES ONLY.
ACTUAL PRODUCT MAY DIFFER FROM THE IMAGES SHOWN)



- (1) Prior to installation carefully unpack and check all the components and accessories are as per details enclosed.
- (2) These instructions should be used in conjunction with the installation guidelines included.



Replacement Glass
MG038



Please use the gloves provided.

*Lamps may not be included.
Please do not exceed maximum wattage.

Voltage: 220 240V~50/60Hz
Lampholder: SES/E14
Lamps: 5 x LED 20W Max



Accessories

| | | |
|-------------|-------|--|
| Glass Shade | 5 Pcs | |
|-------------|-------|--|

Installation Pack

| | | |
|---------------------------|---------|--|
| White Gloves | 2 Pcs | |
| Installation Instructions | 1 Page | |
| Installation Guidelines | 2 Pages | |
| Fixing Screw and Plugs | 2 Pcs | |

Contents Checked By