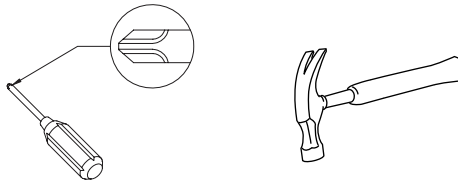


# Assembly Instructions

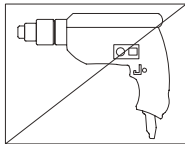


# General Assembly Guidelines

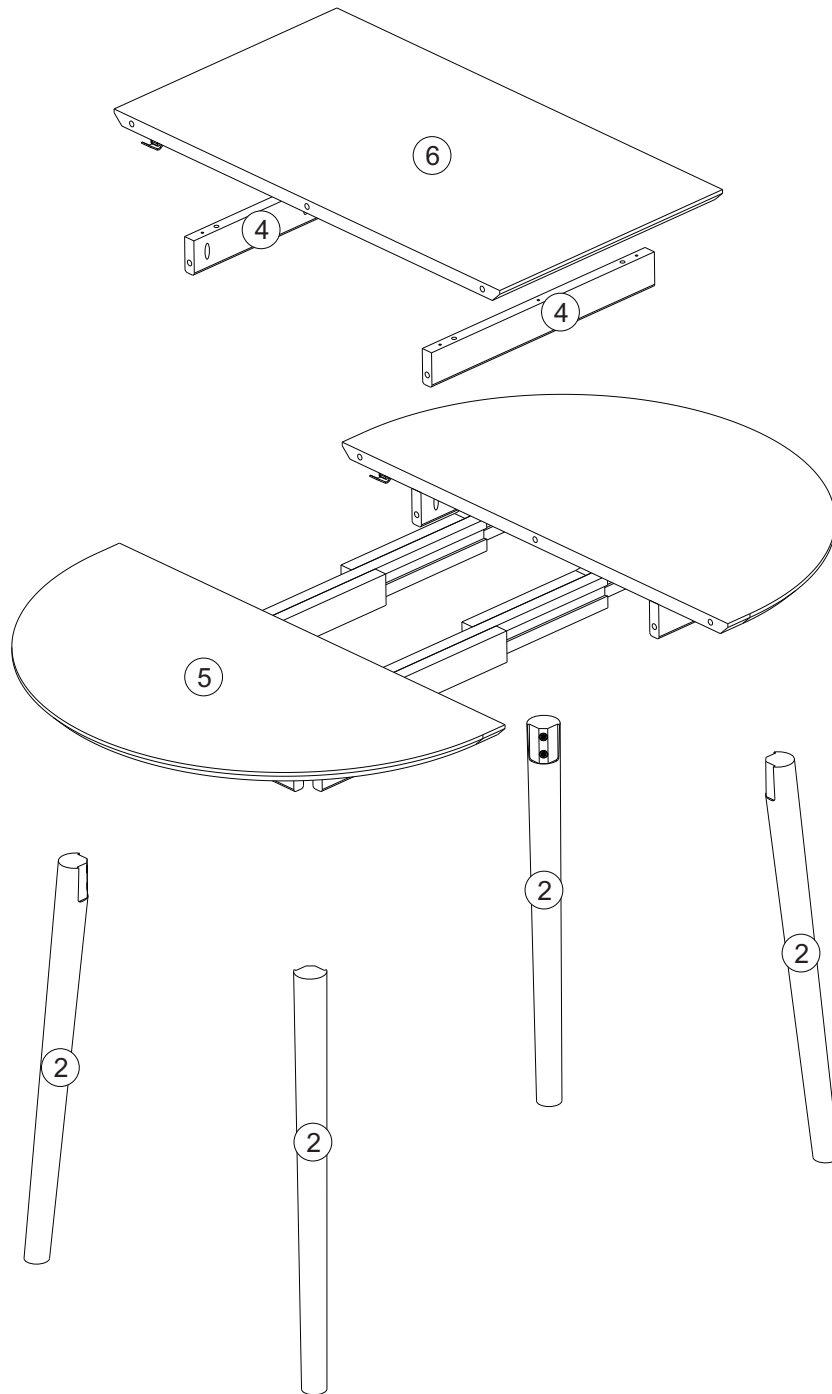
- I. Ensure that all parts and hardware are available before beginning assembly.
- II. Follow each step carefully to ensure the proper assembly of this product.
- III. Two people are recommended for ease in the assembly of this product.
- IV. The three main types of hardware used to assemble this product are wood dowels, screws and bolts.
- V. A Phillips head screwdriver and hammer is required for the assembly of this product.



- V I. Power tools should not be used to assemble this product.


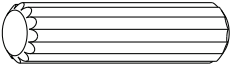
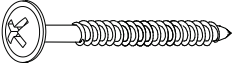
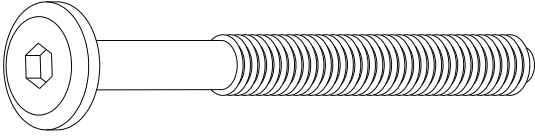

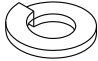


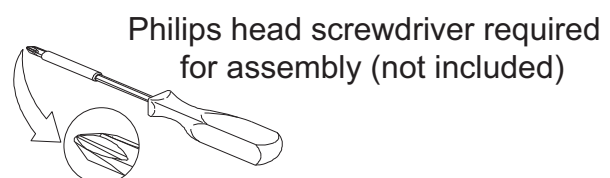
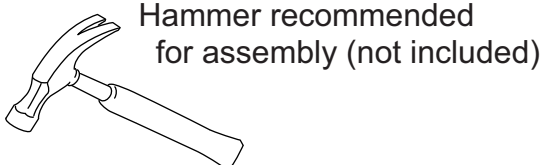
# Parts List



Part #	Description	Qty
2	Leg	04 pcs
4	Rail	02 pcs
5	Table top	01 pc
6	Extension top	01 pc

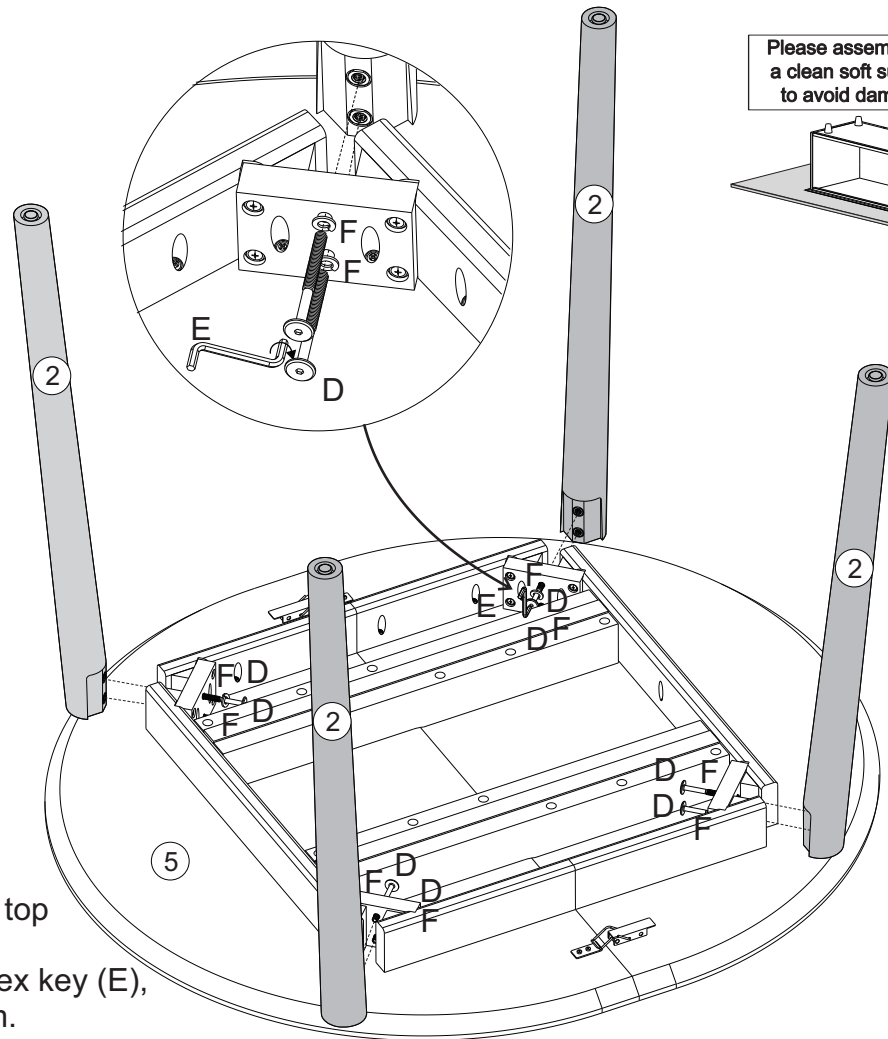
# Hardware List

A		ø10*30mm	Wooden dowel	02 pcs
B		ø8*30mm	Wooden dowel	04 pcs
C		ø3,5*30mm	Screw	06 pcs
D		ø1/4"*70mm	Screw	08pcs
E			Hex Key	01 pcs
F		12mm	Washer	08 pcs

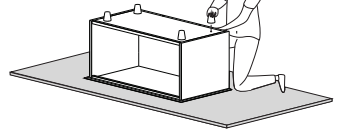


*The hardware quantities listed above are required for proper assembly.  
Some extra hardware may also have been included.*

# Step 1



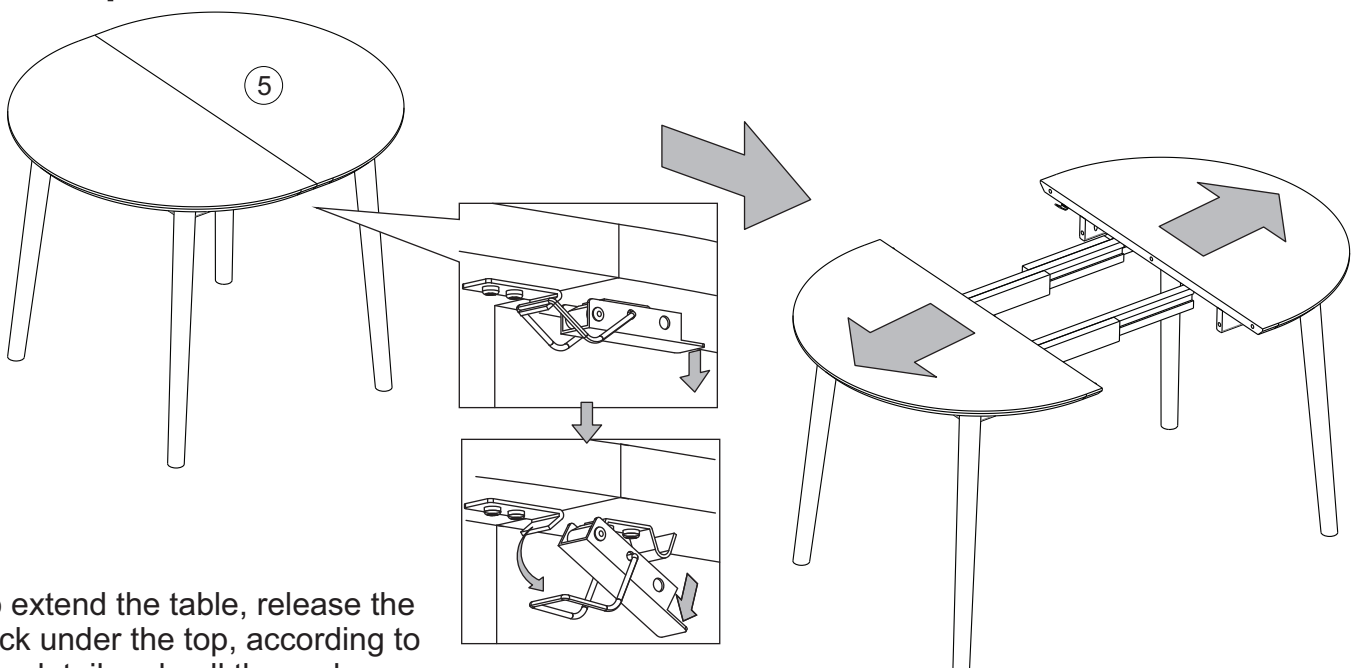
Please assemble on a clean soft surface to avoid damage.



Fix the legs on the table top with the screws (D) and washers (F) using the Hex key (E), according to the diagram.

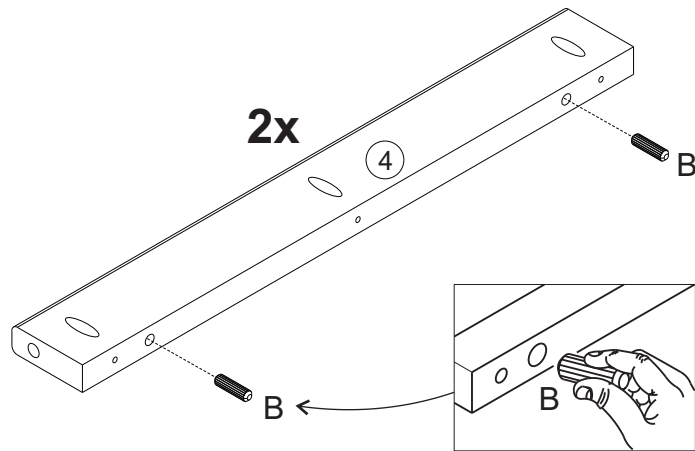
D		08	E		01	F		08
	$\text{\textcircled{D}}$	$\text{\textcircled{08}}$		Hex key			Washer	
	$\text{\textcircled{\text{D}}}$	$\text{\textcircled{\text{D}}}$						

# Step 2

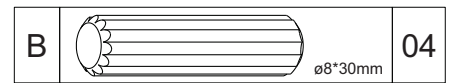


To extend the table, release the lock under the top, according to the detail and pull the ends.

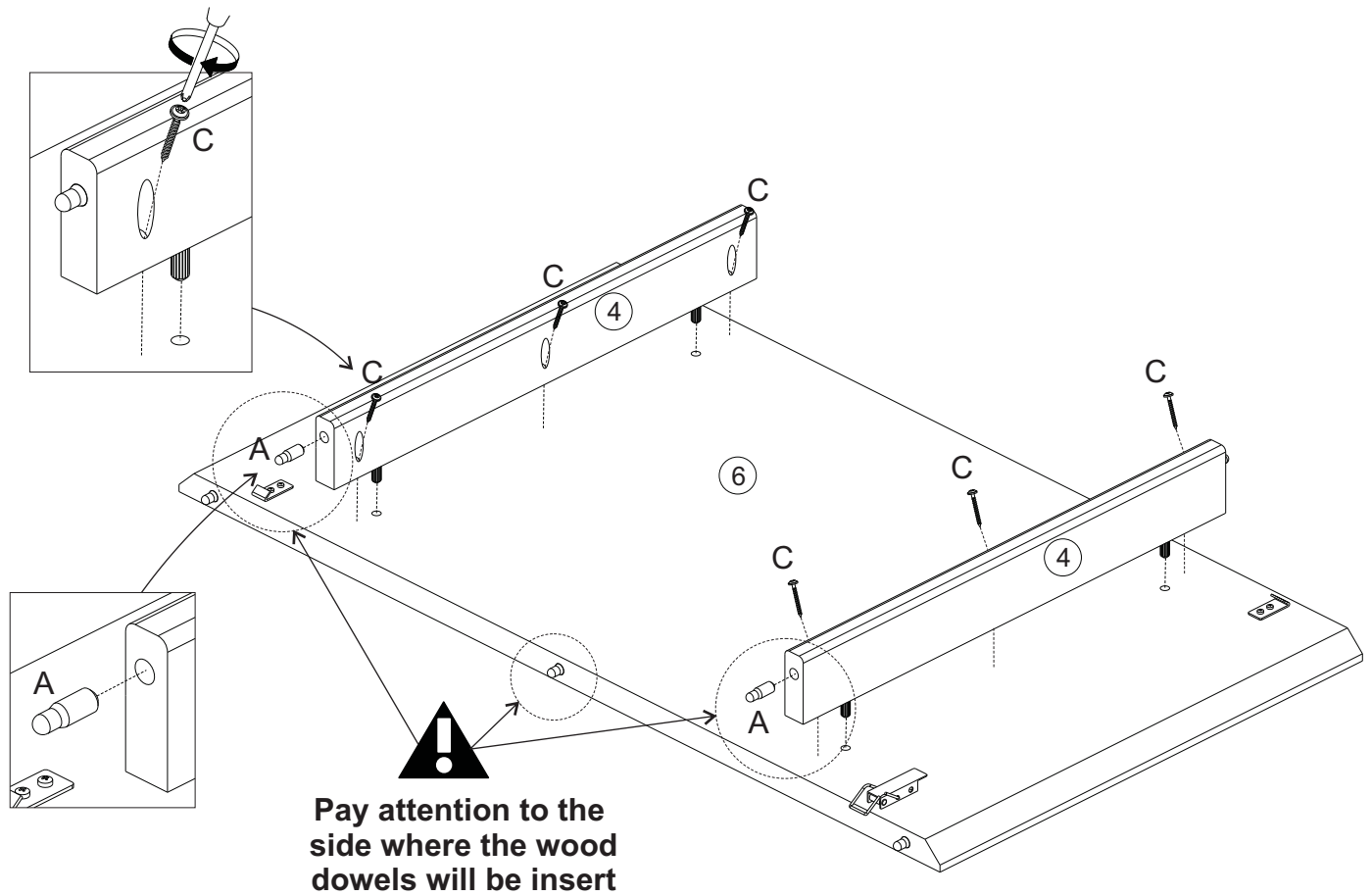
# Step 3



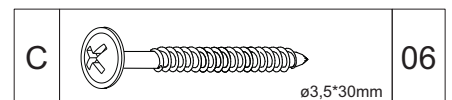
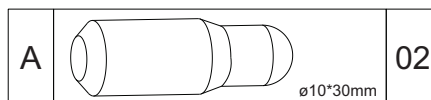
Insert wood dowel (B) into part 4



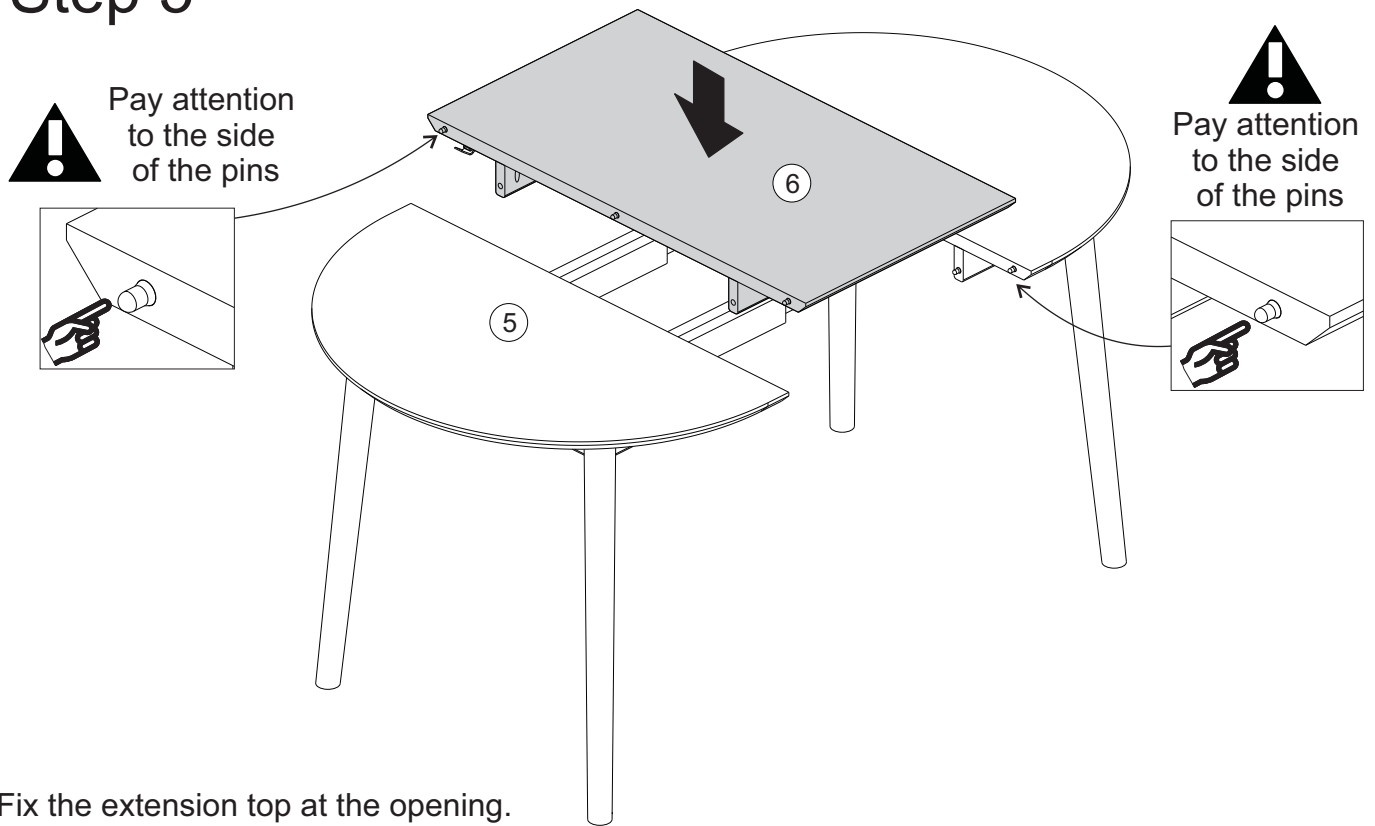
# Step 4



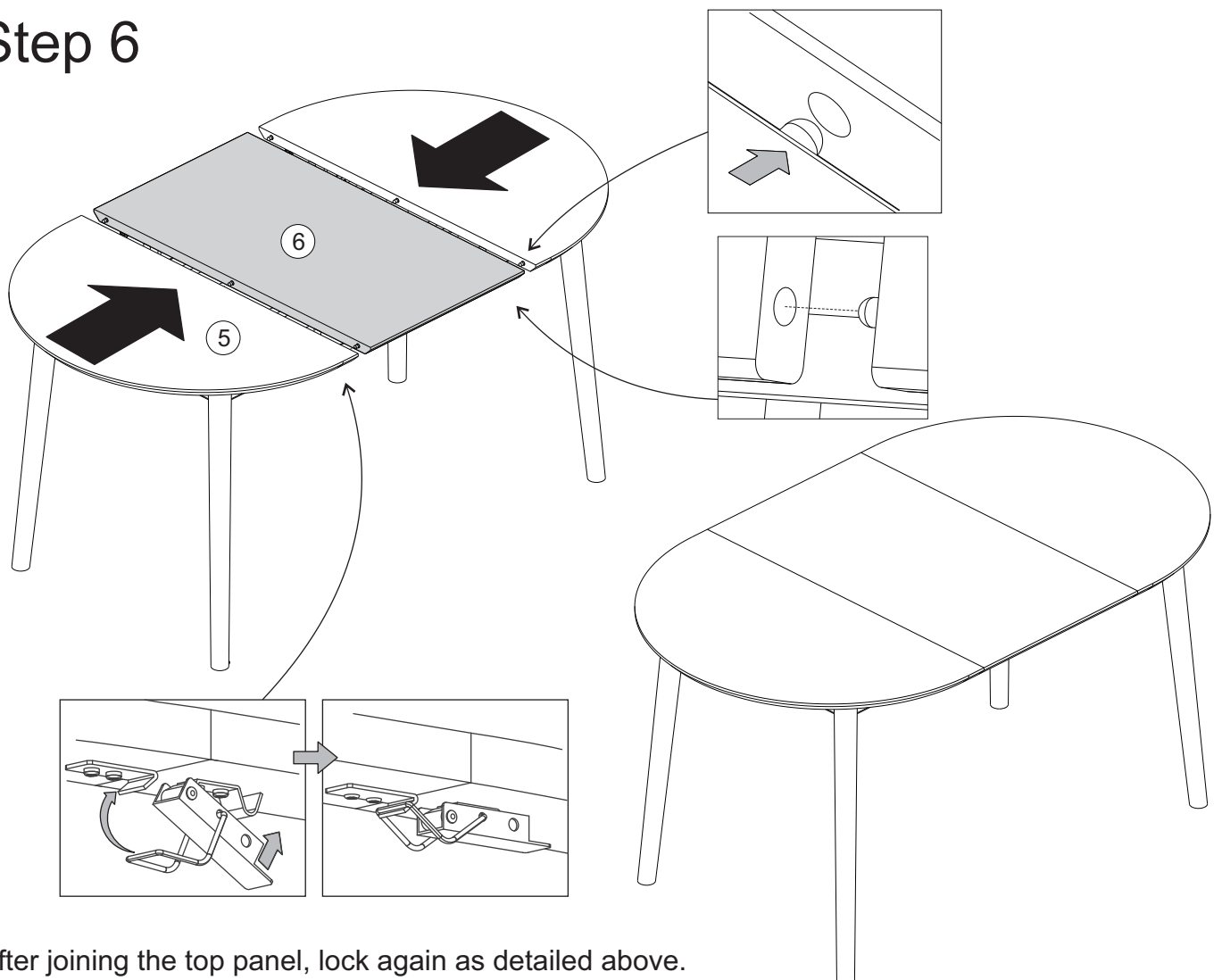
Fix the rails on the extension top with the screws (C) using a Phillips Head Screwdriver. Insert wood dowel (A) into part 4.



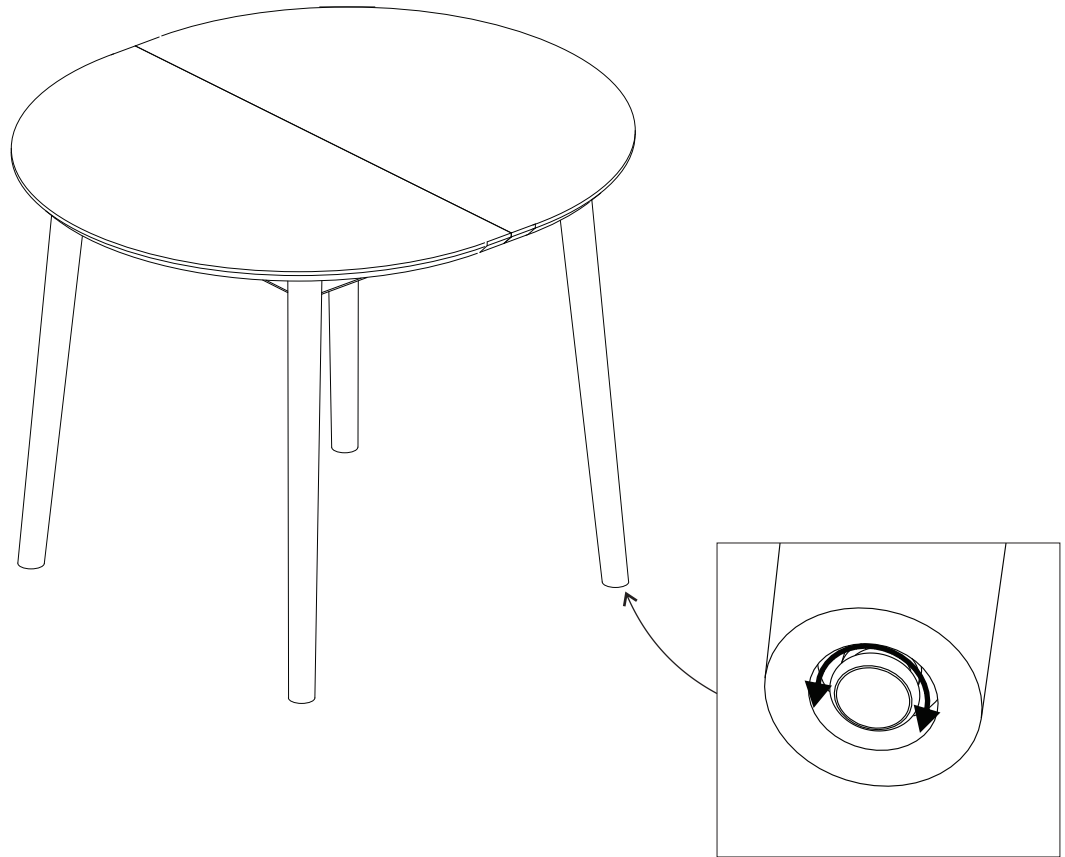
# Step 5



# Step 6



## Step 7



If necessary, adjust the feet to be level with the floor as shown in the diagram.

## Step 8



Distributed weight.