

Welcome

Thanks for purchasing this **Outdoor Energy Garden Stake Light**. Please read this user manual carefully before use.

Package List

- Upon opening the package, please check for the following items:
- \* 4 × Outdoor Energy Garden Stake Light
  - \* 8 × Connection Pipes
  - \* 4 × Ground Spikes
  - \* 1 × User Manual

Specifications

- \* Material: Plastic+ABS
- \* Light Color: Warm Yellow
- \* Outdoor Energy Panel: DC 1.2V Monocrystalline Silicon
- \* Waterproof Performance: IP65
- \* Color Temperature: 3500K
- \* Bulb Type: Tungsten Lamp
- \* Battery(1Pcs): 800mAh Inbuilt Rechargeable NI-MH Battery
- \* Rated Power(1Pcs): 5W
- \* Charging Time: 6-8H
- \* Working Time (Fully Charged): 12-14H
- \* Lifespan: 10,000H
- \* Outdoor Energy Panel Size: 5.8×5.8cm/2.28×2.28in

Highlights

- \* Outdoor energy panel can effectively absorb sunlight during the day and convert to electricity, illuminate up to 14 hours during night.
- \* Sensitive optical sensor helps our lights achieve auto-off during the day and auto-on at the night time.
- \* IP65 excellent water resistance and premium ABS material provide extreme long service life.
- \* Our upgraded outdoor energy lights are perfect decoration for garden, patio, yard, lawn, pathway, etc..

Welcome

Thanks for purchasing this **Outdoor Energy Garden Stake Light**. Please read this user manual carefully before use.

Package List

- Upon opening the package, please check for the following items:
- \* 4 × Outdoor Energy Garden Stake Light
  - \* 8 × Connection Pipes
  - \* 4 × Ground Spikes
  - \* 1 × User Manual

Specifications

- \* Material: Plastic+ABS
- \* Light Color: Warm Yellow
- \* Outdoor Energy Panel: DC 1.2V Monocrystalline Silicon
- \* Waterproof Performance: IP65
- \* Color Temperature: 3500K
- \* Bulb Type: Tungsten Lamp
- \* Battery(1Pcs): 800mAh Inbuilt Rechargeable NI-MH Battery
- \* Rated Power(1Pcs): 5W
- \* Charging Time: 6-8H
- \* Working Time (Fully Charged): 12-14H
- \* Lifespan: 10,000H
- \* Outdoor Energy Panel Size: 5.8×5.8cm/2.28×2.28in

Highlights

- \* Outdoor energy panel can effectively absorb sunlight during the day and convert to electricity, illuminate up to 14 hours during night.
- \* Sensitive optical sensor helps our lights achieve auto-off during the day and auto-on at the night time.
- \* IP65 excellent water resistance and premium ABS material provide extreme long service life.
- \* Our upgraded outdoor energy lights are perfect decoration for garden, patio, yard, lawn, pathway, etc..

Welcome

Thanks for purchasing this **Outdoor Energy Garden Stake Light**. Please read this user manual carefully before use.

Package List

- Upon opening the package, please check for the following items:
- \* 4 × Outdoor Energy Garden Stake Light
  - \* 8 × Connection Pipes
  - \* 4 × Ground Spikes
  - \* 1 × User Manual

Specifications

- \* Material: Plastic+ABS
- \* Light Color: Warm Yellow
- \* Outdoor Energy Panel: DC 1.2V Monocrystalline Silicon
- \* Waterproof Performance: IP65
- \* Color Temperature: 3500K
- \* Bulb Type: Tungsten Lamp
- \* Battery(1Pcs): 800mAh Inbuilt Rechargeable NI-MH Battery
- \* Rated Power(1Pcs): 5W
- \* Charging Time: 6-8H
- \* Working Time (Fully Charged): 12-14H
- \* Lifespan: 10,000H
- \* Outdoor Energy Panel Size: 5.8×5.8cm/2.28×2.28in

Highlights

- \* Outdoor energy panel can effectively absorb sunlight during the day and convert to electricity, illuminate up to 14 hours during night.
- \* Sensitive optical sensor helps our lights achieve auto-off during the day and auto-on at the night time.
- \* IP65 excellent water resistance and premium ABS material provide extreme long service life.
- \* Our upgraded outdoor energy lights are perfect decoration for garden, patio, yard, lawn, pathway, etc..

Welcome

Thanks for purchasing this **Outdoor Energy Garden Stake Light**. Please read this user manual carefully before use.

Package List

- Upon opening the package, please check for the following items:
- \* 4 × Outdoor Energy Garden Stake Light
  - \* 8 × Connection Pipes
  - \* 4 × Ground Spikes
  - \* 1 × User Manual

Specifications

- \* Material: Plastic+ABS
- \* Light Color: Warm Yellow
- \* Outdoor Energy Panel: DC 1.2V Monocrystalline Silicon
- \* Waterproof Performance: IP65
- \* Color Temperature: 3500K
- \* Bulb Type: Tungsten Lamp
- \* Battery(1Pcs): 800mAh Inbuilt Rechargeable NI-MH Battery
- \* Rated Power(1Pcs): 5W
- \* Charging Time: 6-8H
- \* Working Time (Fully Charged): 12-14H
- \* Lifespan: 10,000H
- \* Outdoor Energy Panel Size: 5.8×5.8cm/2.28×2.28in

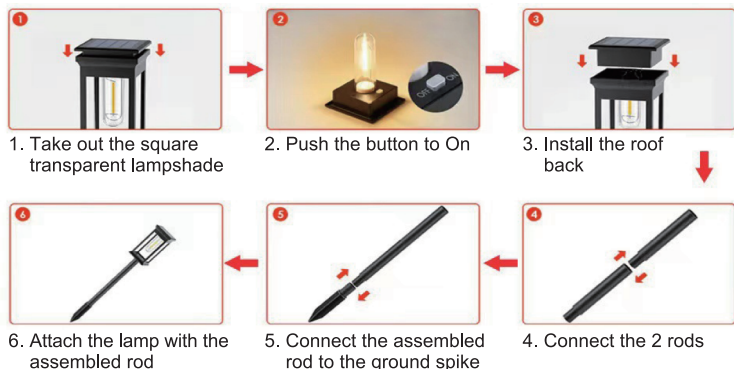
Highlights

- \* Outdoor energy panel can effectively absorb sunlight during the day and convert to electricity, illuminate up to 14 hours during night.
- \* Sensitive optical sensor helps our lights achieve auto-off during the day and auto-on at the night time.
- \* IP65 excellent water resistance and premium ABS material provide extreme long service life.
- \* Our upgraded outdoor energy lights are perfect decoration for garden, patio, yard, lawn, pathway, etc..

### Friendly Reminder

1. How long the light illuminates depends on your geographical location, weather conditions and seasonal light availability.
2. Choose an outdoor location with full direct sunlight where the outdoor energy panel can receive at least 6 hours of sunlight each day. Shady locations will adversely affect the battery and shorten the working time of the light at night.
3. The selected location should not be near strong lighting sources such as streetlights, which may cause the LED light to turn off automatically as there is a sensor inside to detect brightness and control the light.

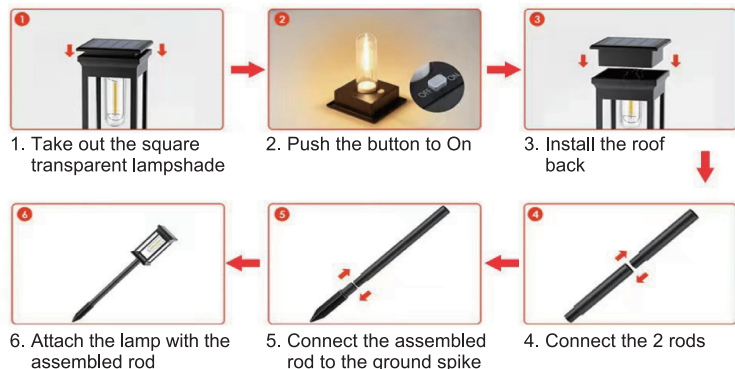
### Installation



### Friendly Reminder

1. How long the light illuminates depends on your geographical location, weather conditions and seasonal light availability.
2. Choose an outdoor location with full direct sunlight where the outdoor energy panel can receive at least 6 hours of sunlight each day. Shady locations will adversely affect the battery and shorten the working time of the light at night.
3. The selected location should not be near strong lighting sources such as streetlights, which may cause the LED light to turn off automatically as there is a sensor inside to detect brightness and control the light.

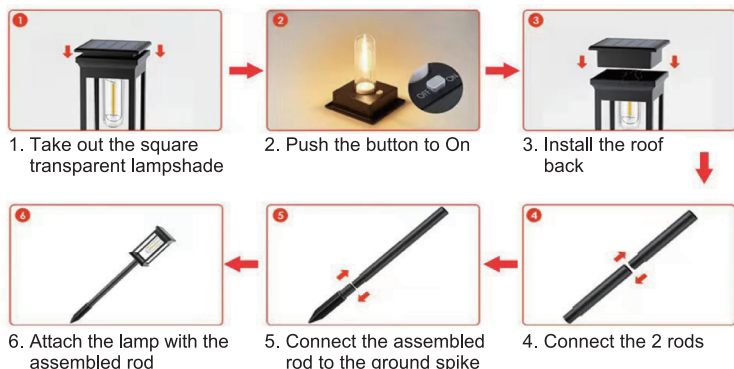
### Installation



### Friendly Reminder

1. How long the light illuminates depends on your geographical location, weather conditions and seasonal light availability.
2. Choose an outdoor location with full direct sunlight where the outdoor energy panel can receive at least 6 hours of sunlight each day. Shady locations will adversely affect the battery and shorten the working time of the light at night.
3. The selected location should not be near strong lighting sources such as streetlights, which may cause the LED light to turn off automatically as there is a sensor inside to detect brightness and control the light.

### Installation



### Friendly Reminder

1. How long the light illuminates depends on your geographical location, weather conditions and seasonal light availability.
2. Choose an outdoor location with full direct sunlight where the outdoor energy panel can receive at least 6 hours of sunlight each day. Shady locations will adversely affect the battery and shorten the working time of the light at night.
3. The selected location should not be near strong lighting sources such as streetlights, which may cause the LED light to turn off automatically as there is a sensor inside to detect brightness and control the light.

### Installation

